

KRUGER BENSEN ZIEMER ARCHITECTS, INC. AIA
30 W. ARRELLAGA SANTA BARBARA, CA
805/963-1726 93101

STEVE DOWTY, A.I.A.
PRINCIPAL IN CHARGE

GERALD SHUSTA
PROJECT ARCHITECT

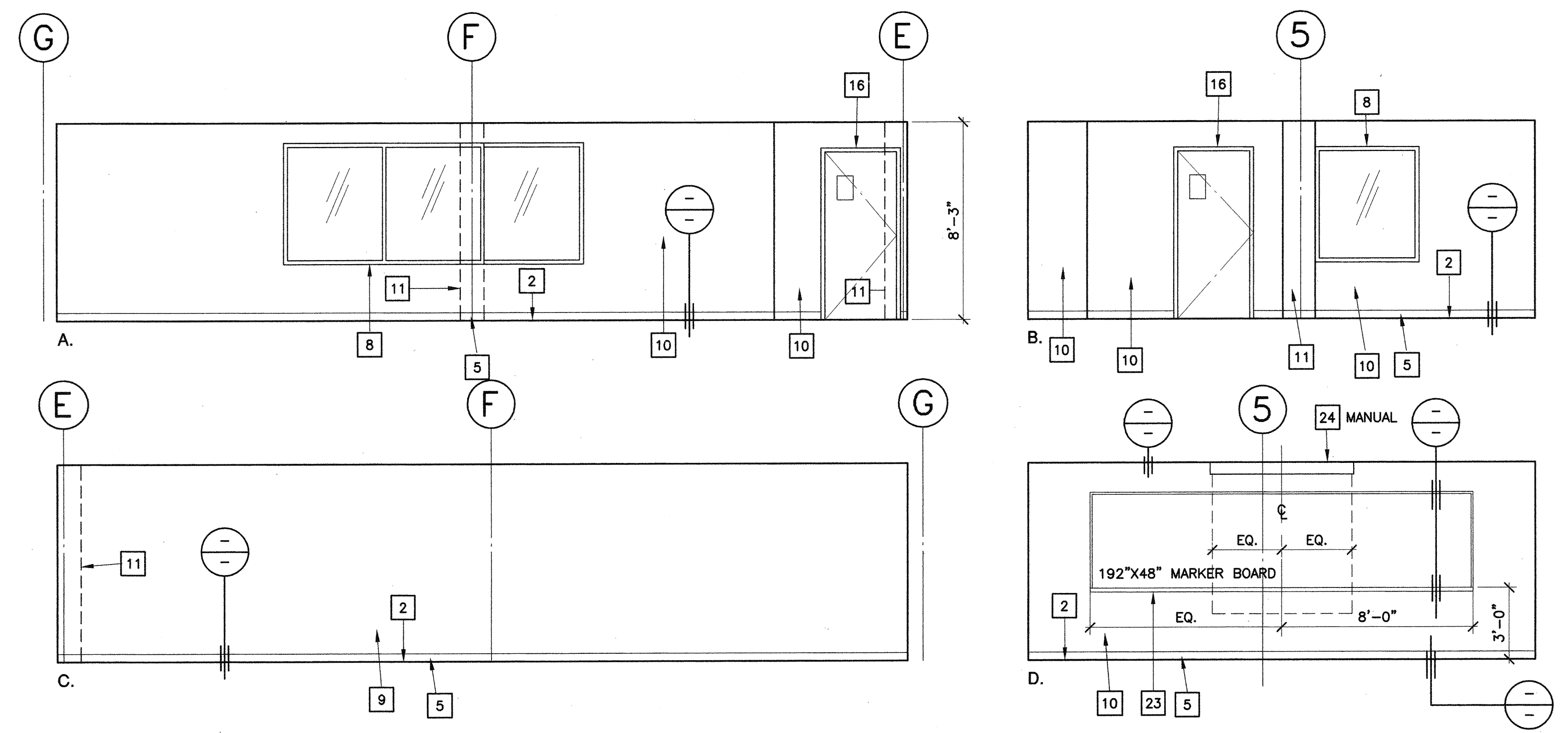
All show, design, construction and price schedules or represented by this drawing are owned by and are the property of Kruger-Bensen-Ziemer, AIA architects, and may be used, copied, altered and modified for use in, and in connection with, the specified projects. None of such views, designs, arrangements or plans shall be used by or disclosed to any person, firm or corporation for any purpose whatsoever without the written permission of Kruger-Bensen-Ziemer.

CENTER FOR ADVANCED LEARNING TECHNOLOGY
SKYLINE COLLEGE
SAN MATEO COUNTY COMMUNITY COLLEGE DISTRICT
SAN BRUNO, CALIFORNIA 94066
3300 COLLEGE DRIVE

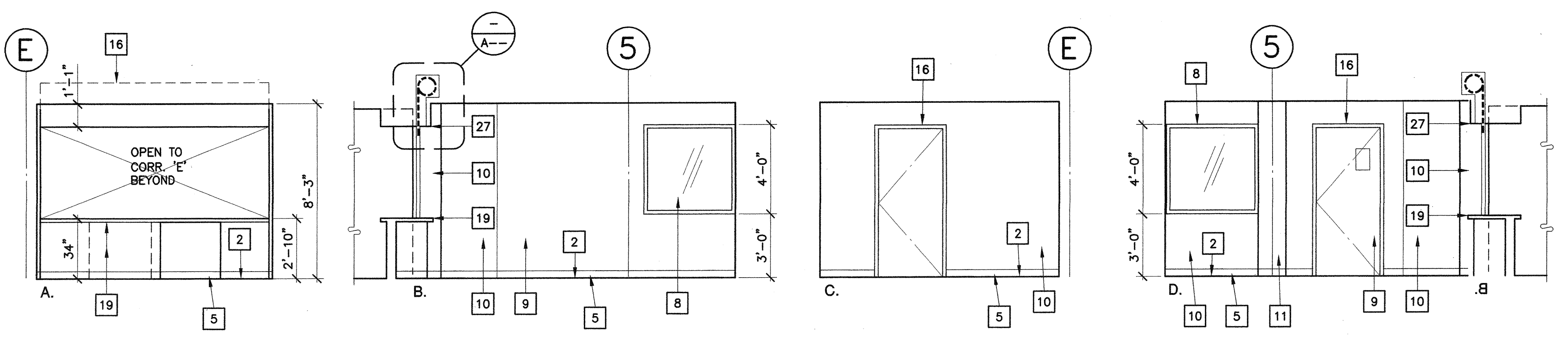
Numbered Notes: THIS SHEET ONLY

- 1 (E) CONC. SLAB W/ (N) VINYL COMPO. FLR. TILE.
- 2 (N) 3" HIGH ACCESS FLOOR SYSTEM OVER (E) CONC. SLAB.
- 3 (N) 27" HIGH ACCESS FLOOR SYSTEM OVER (E) CONC. SLAB.
- 4 (N) ACCESS FLOOR RAMP SYSTEM.
- 5 (N) 4" HIGH RUBBER BASE.
- 6 (N) EXTERIOR ALUM. STOREFRONT GLAZING SYSTEM.
- 7 (N) INTERIOR ALUM. STOREFRONT GLAZING SYSTEM.
- 8 (N) HOLLOW METAL FRAME W/ GLAZING (45 MINUTE @ CORR. 'E')
- 9 (E) GYP. BD.
- 10 (N) GYP. BD.
- 11 (E) EXPOSED CONC. COL.
- 12 (E) EXPOSED CONC. WALL.
- 13 (E) CONC. WALL W/ PLASTER FIN.
- 14 (E) EXPOSED CONC. WALL PANEL W/ METAL FRAMED FIXED GL.
- 15 (E) DOOR
- 16 (N) DOOR
- 17 (N) HANDRAIL.
- 18 (N) OPERABLE WALL PANELS (SHOWN IN STACKED POSITION).
- 19 (N) STD. HT. BASE CAB. & TOP W/ W.I.C. DESIGN SERIES NUMBER- SEE DET. 6/A9.4 & 8/A9.4
- 20 (N) WALL CAB W/ W.I.C. DESIGN SERIES NUMBER - SEE DET. 5/A9.4
- 21 ACCESS FLOOR TRANSITION RAMP. SEE -/-
- 22 (N) ADJUSTABLE SHELVES
- 23 (N) MARKER BOARD.
- 24 (N) WALL MOUNTED PROJECTION SCREEN, (ELECTRIC OR MANUAL), SEE -/-
- 25 (N) DRAPERY POCKET W/ ELECTRIC ROLL DOWN SHADES.
- 26 (E) GYP. BD. SOFFIT.
- 27 (N) GYP. BD. SOFFIT
- 28 (E) EXPOSED CONC. WAFFLE SLAB
- 29 (N) SUSPENDED LIGHT FIXT.- SEE ELECT.
- 30 (N) EXPOSED H.V.A.C. DUCT- SEE MECH.
- 31 (N) HEAD TRACK @ (N) OPERABLE WALL.
- 32 (E) CONC. SLAB W/ (E) VINYL COMPO. FLR. TILE.
- 33 (E) 4" HIGH RUBBER BASE.
- 34 (E) F.E. CAB.
- 35 (E) ELEV. DR.
- 36 (N) SLIDING PANELS IN FRONT OF (N) ADJUST. SHELVES.
- 37 (E) ELECT. PANEL.
- 38 (N) ACCESSIBLE WORK STATION: SEE -/-
TOP @ +30" W/ 28" H. x 38" W. x 24" D. CLR. KNEE SPACE
- 39 (N) HORIZ. STABILIZING CABLE TO MATCH SUSPENSION CABLE LIGHT FIXTS. TO STRUCT. IN WALL OR SOFFIT SOFFIT- SEE -/-
- 40 (N) SIGN- SEE DOOR SCHEDULE
- 41 (E) EXPO. H.V.A.C. DUCT TO BE REMOVED- PATCH (E) OPENING W/ MTL. STUDS & GYP. BD. TO MATCH (E)- SEE MECH.
- 42 (N) CONT. SURF. MTD. ELECT. STRIP MOULDING- SEE ELECT.

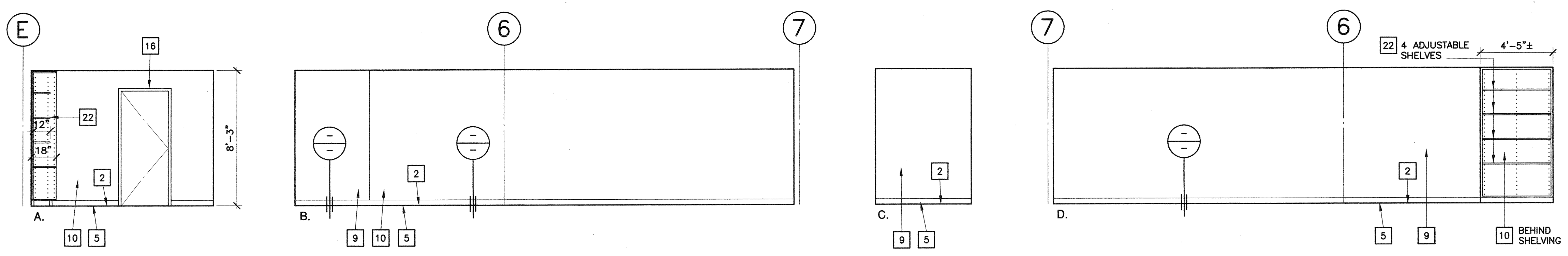
3"0 OR 3 1/2" VERIFY W/ MANUF.



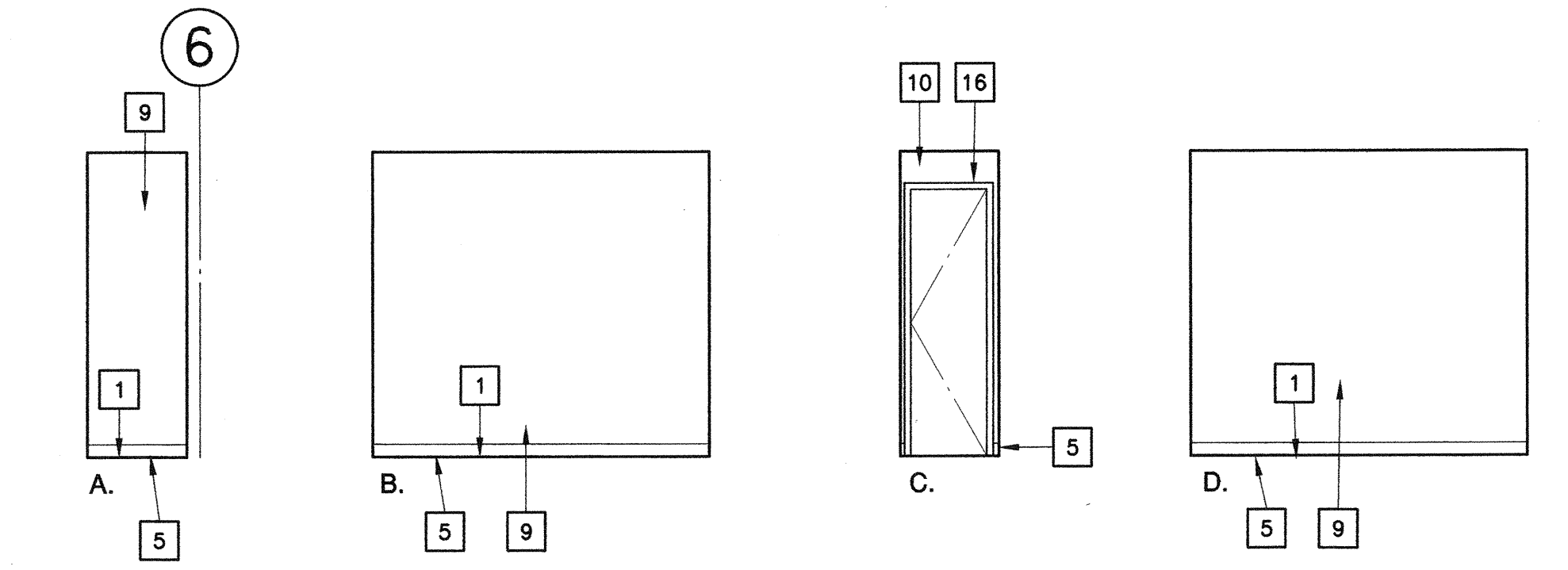
1 Multi-Media Lab 2119
SCALE : 1/4" = 1'-0"



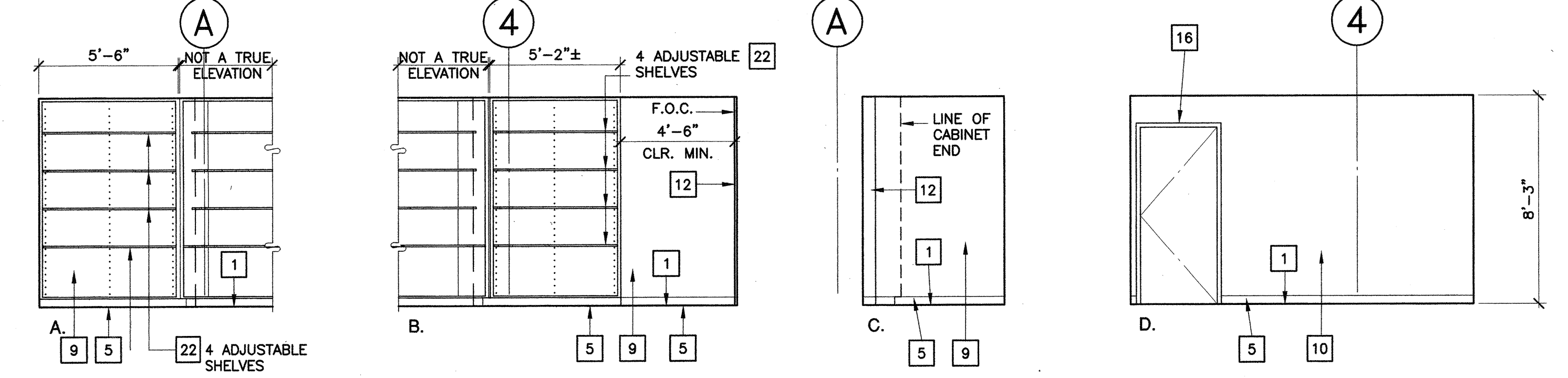
2 Lab Service 2122
SCALE : 1/4" = 1'-0"



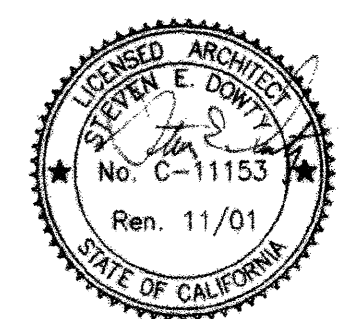
3 Storage 2122A
SCALE : 1/4" = 1'-0"



4 Storage 2119 A
SCALE : 1/4" = 1'-0"



5 Storage 127 B
SCALE :



IDENTIFICATION STAMP
DIV. OF THE STATE ARCHITECT
OFFICE OF REGULATION SERVICES
No. C-11153
APPL 01-103735
Rev. 11/01
DATE 06/21/01

| NO. | DESCRIPTION | DATE | BY |
|-----|-------------|------|----|
| | | | |
| | | | |

| | |
|-------------|---------------------|
| DRAWN | LJL |
| CHECKED | SD |
| DATE | 3/21/01 |
| JOB NO. | 98-03 |
| SHEET TITLE | INTERIOR ELEVATIONS |
| SHEET 16 | A 5.3 |
| OF 21 | |