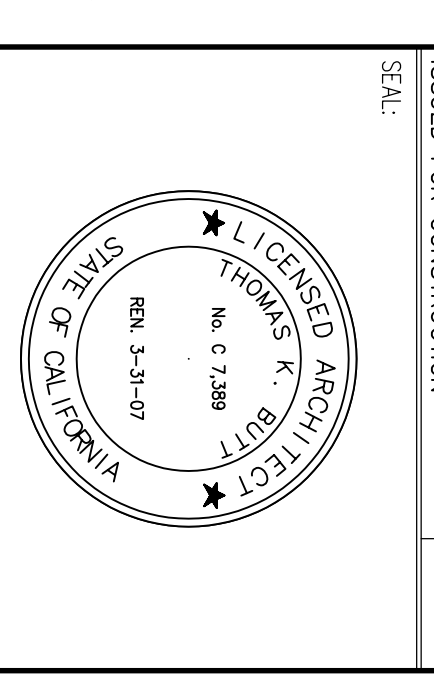


REVISION	DESCRIPTION	INITIAL	DATE
1	ISSUED FOR CONSTRUCTION		03/03/04
2	ISSUED FOR BID		03/03/04
3	ISSUED FOR PERMIT		03/03/04
4	ISSUED FOR PLAN CHECK		02/26/04

APPENDIX
 KGB 4/7/04
 PRE-APPLICATION REVIEW
 02/26/04
 ISSUED FOR PERMIT
 03/03/04
 ISSUED FOR BID
 03/03/04
 ISSUED FOR CONSTRUCTION



PROJECT: **BUILDING NO. 18 (NORTH HALL) MODERNIZATION**

ARCHITECTURE • PLANNING • ENGINEERING

117 PARK PLACE
 POINT RICHMOND
 CALIFORNIA 94801
 (916) 238-7435
 (FAX) 232-5325
 H1P://WWW.IRIVER.COM

COLLEGE OF SAN MATEO
 1700 WEST HILLSDALE BLVD,
 SAN MATEO, CA 94402

SAN MATEO CO. COMMUNITY
 COLLEGE DISTRICT

DR. GREGORIO SANCHEZ
 OFFICE OF RESOLUTION SERVICES
 APPL 106047
 AC T13 SS

APPROVED
 DW. OF THE STATE ARCHITECT
 APPL 106047
 AC T13 SS

SHEET TITLE:
INTERIOR ELEVATIONS

PROJ. NO. 2002-066-02
 PREPARATION AND REVIEW
 DRAWN BY BA
 DESIGNED BY TNS
 CHECKED BY TNS
 SHEET NUMBER:

MOD A5.3

DATE: 03/03/04