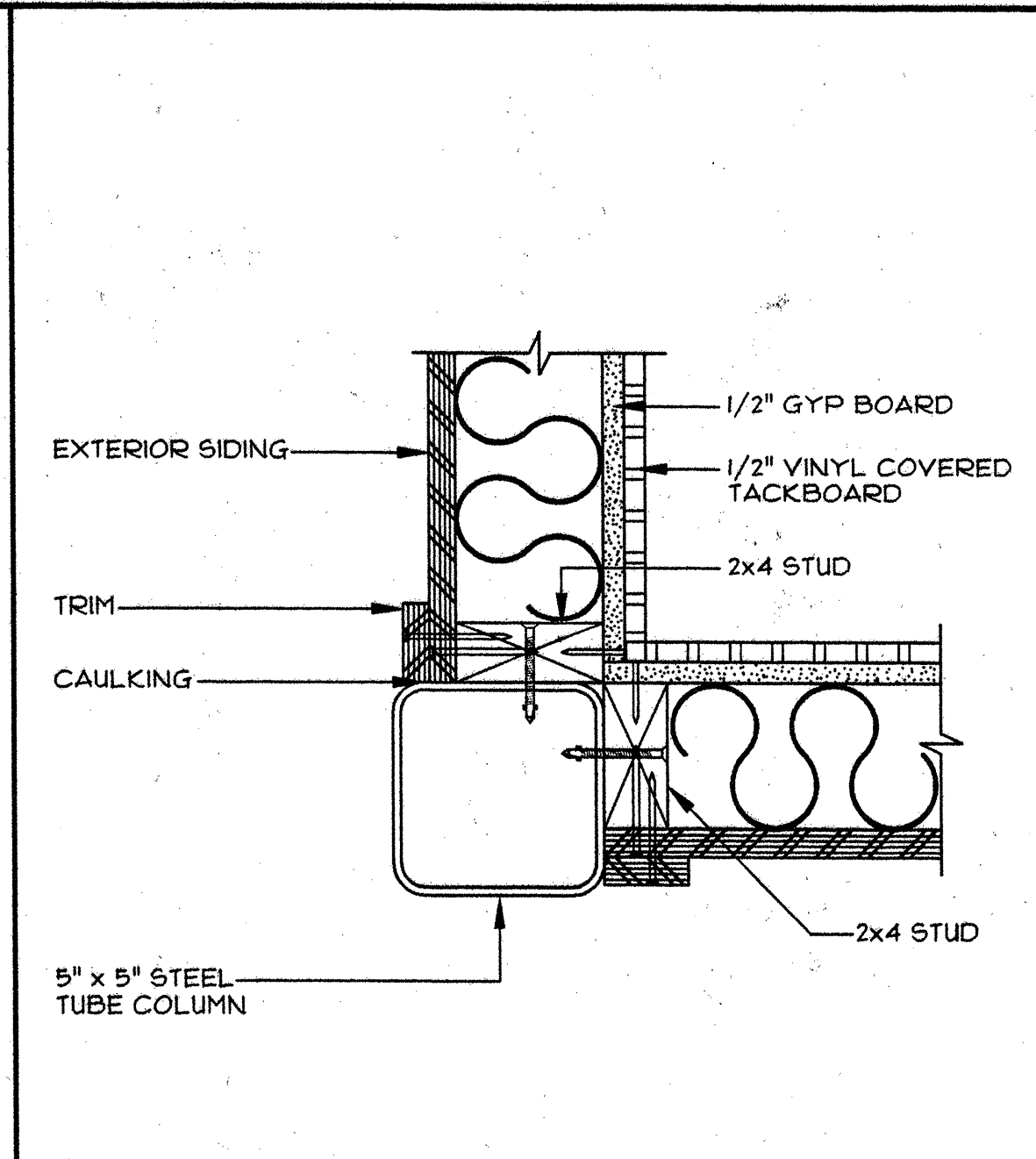
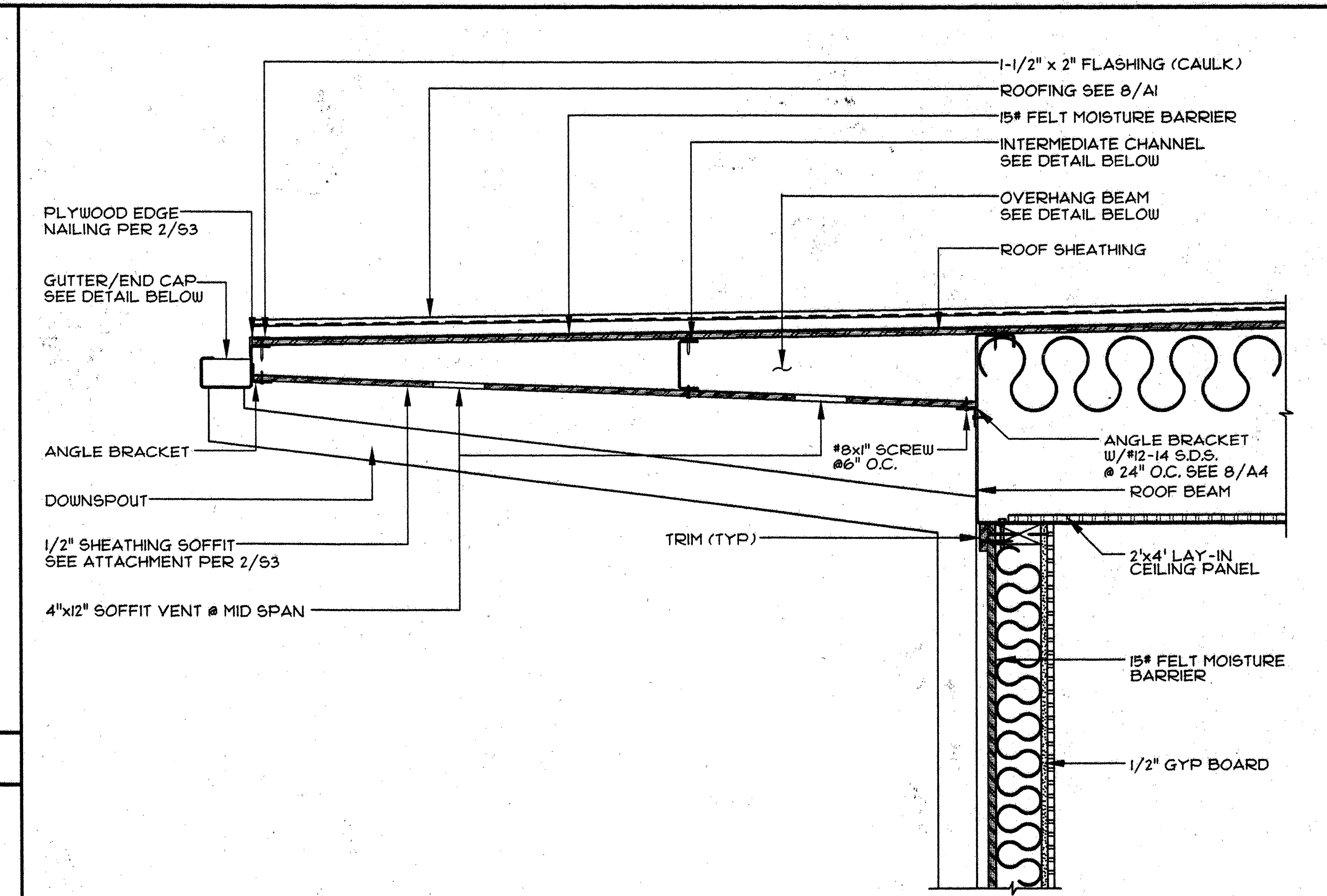


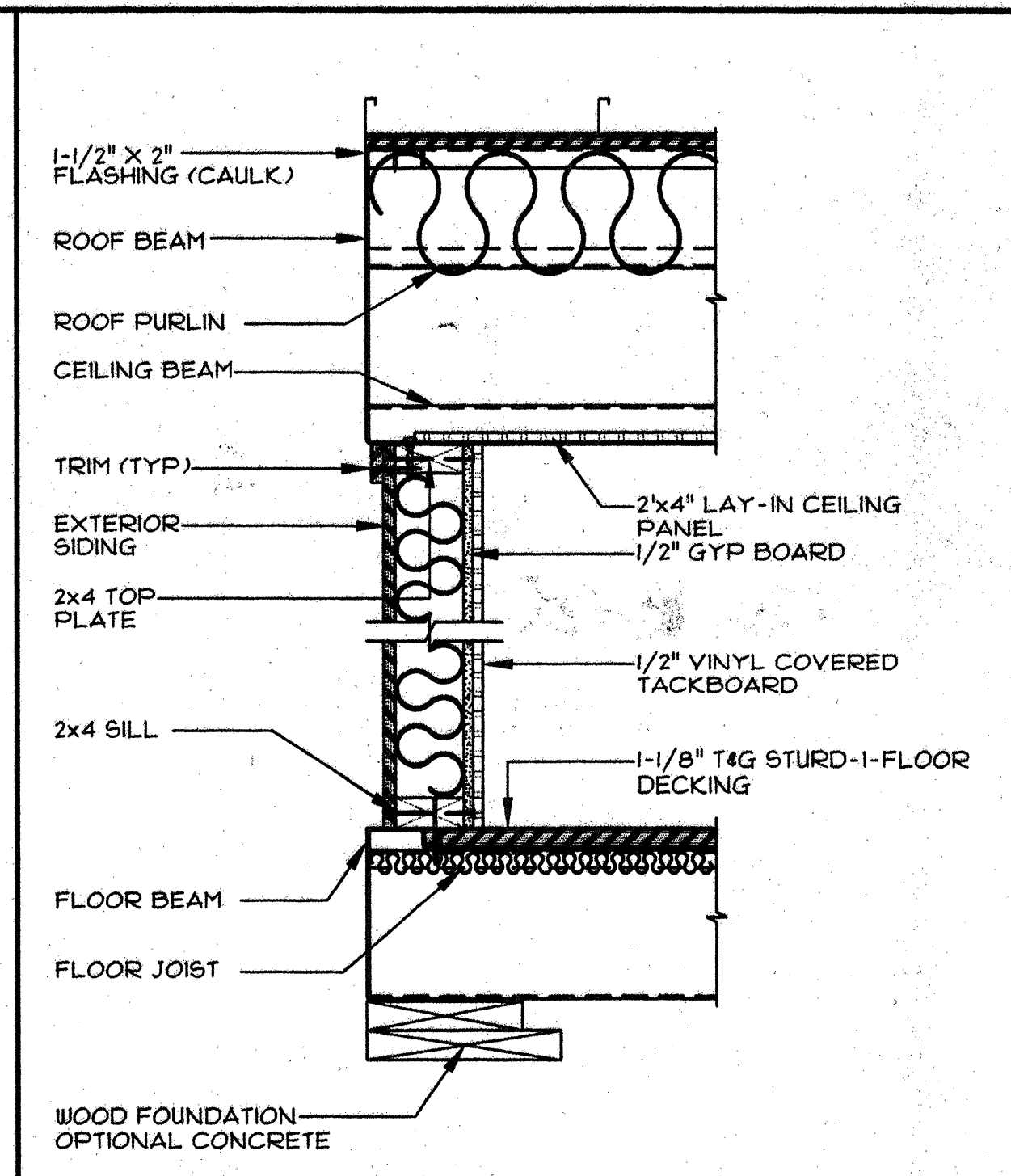
1 COLUMN SECTION AT MOD-LINE
SCALE: 3/4" = 1'-0"



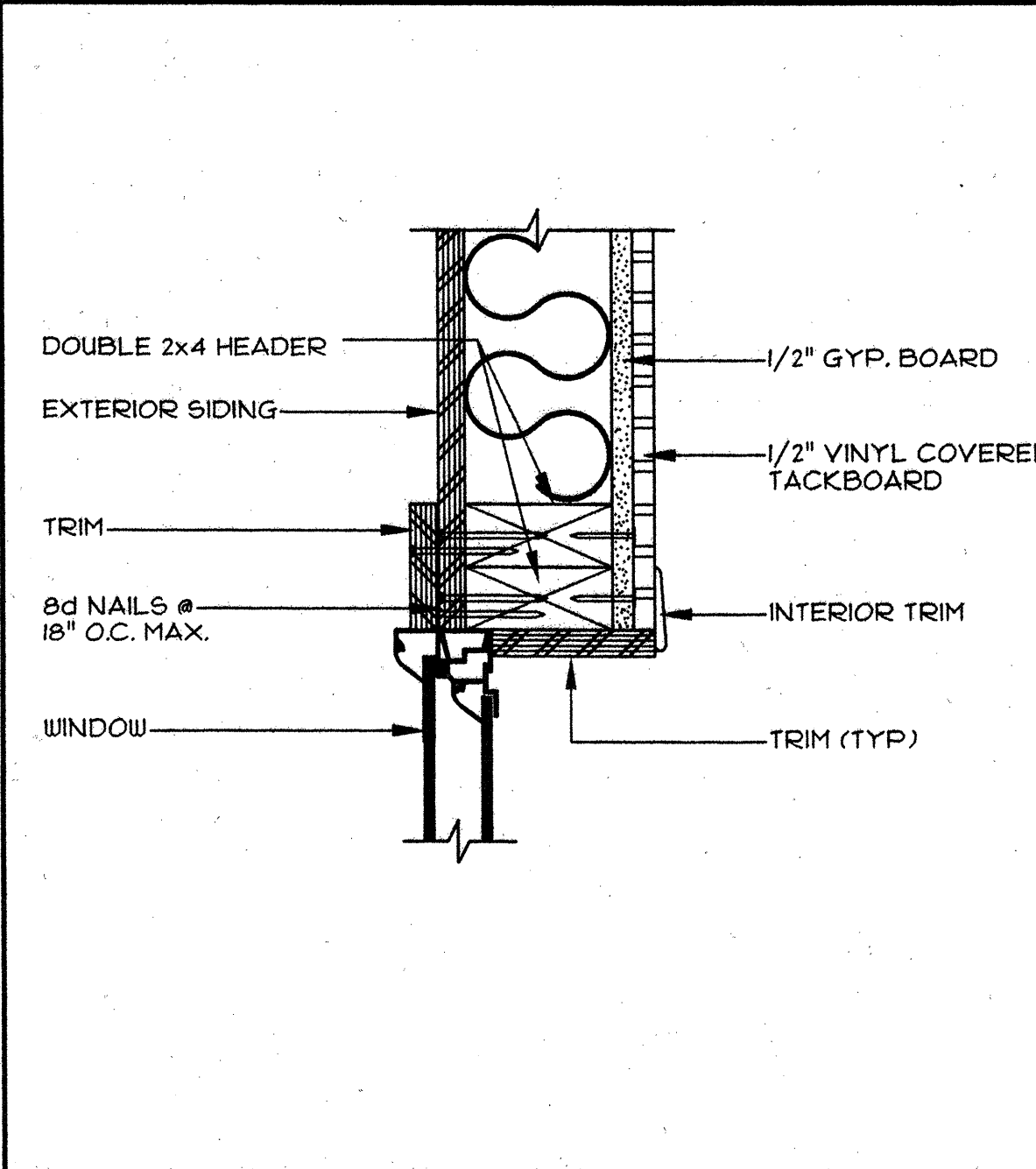
2 COLUMN SECTION @ CORNER
SCALE: 3/4" = 1'-0"



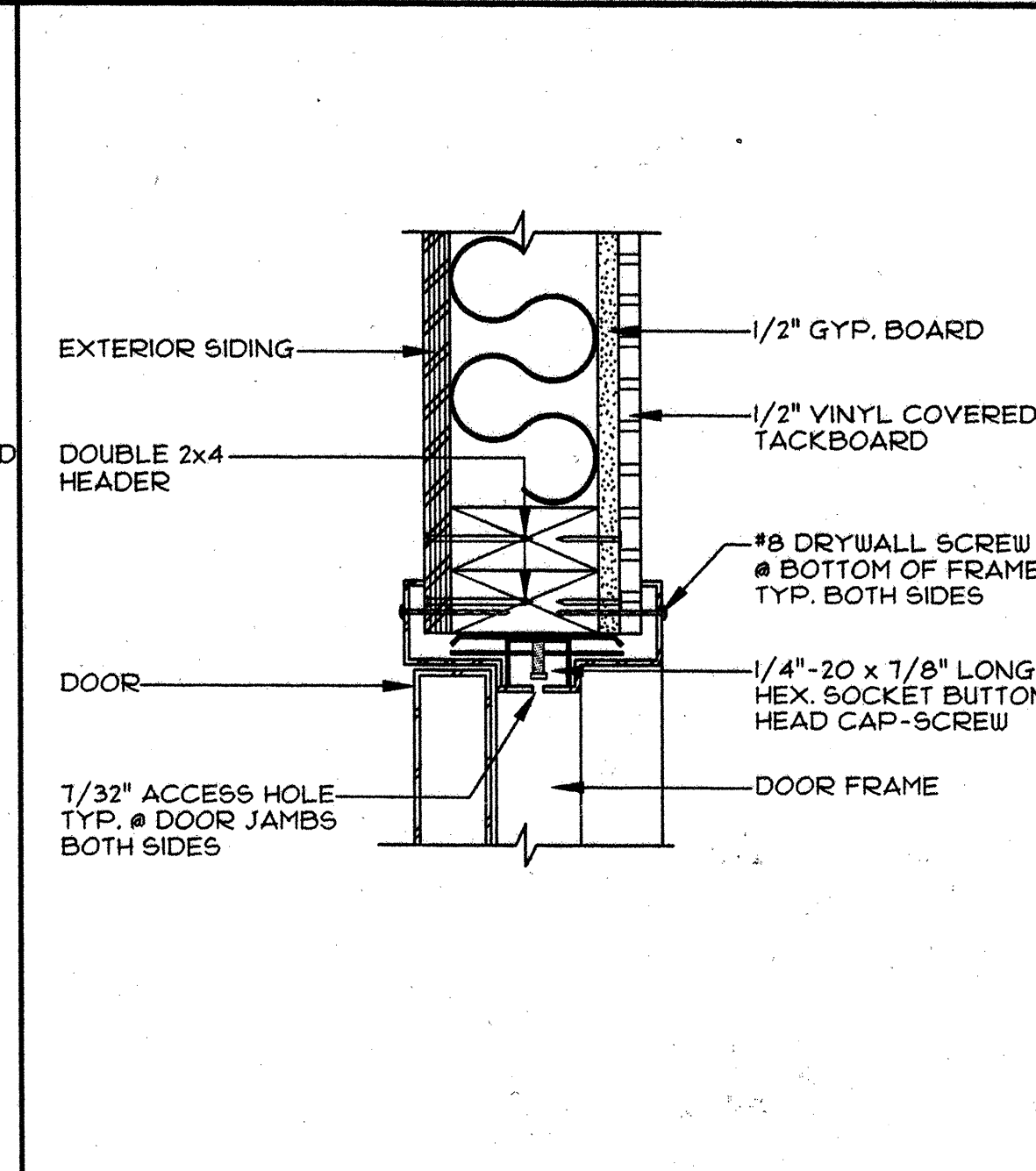
7 WALL SECTION - FRONT AND REAR
SCALE: 1/2" = 1'-0"



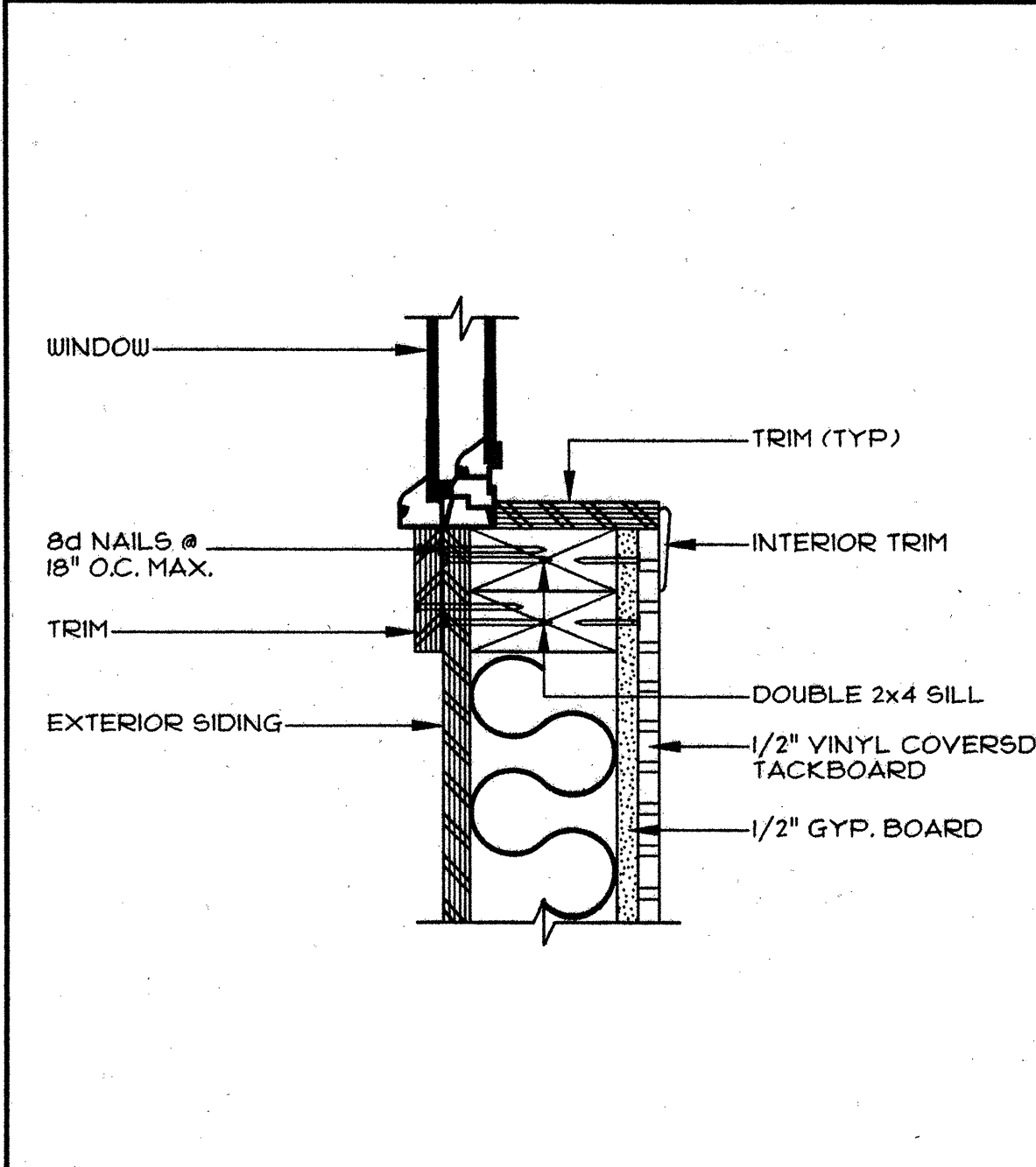
9 WALL SECTION - SIDE
SCALE: 1/2" = 1'-0"



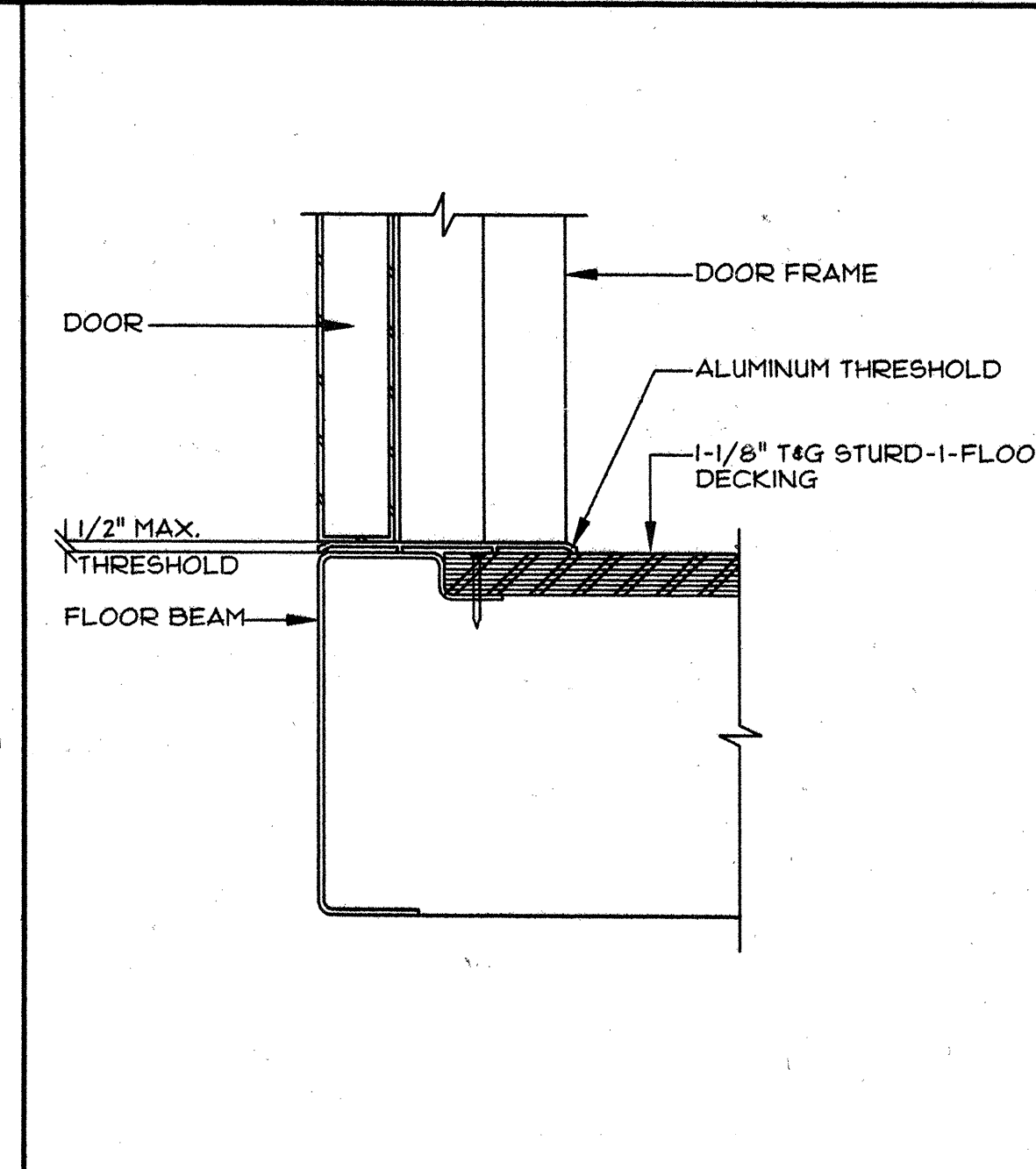
3 WINDOW HEADER (JAMB SIM'L)
SCALE: 3/4" = 1'-0"



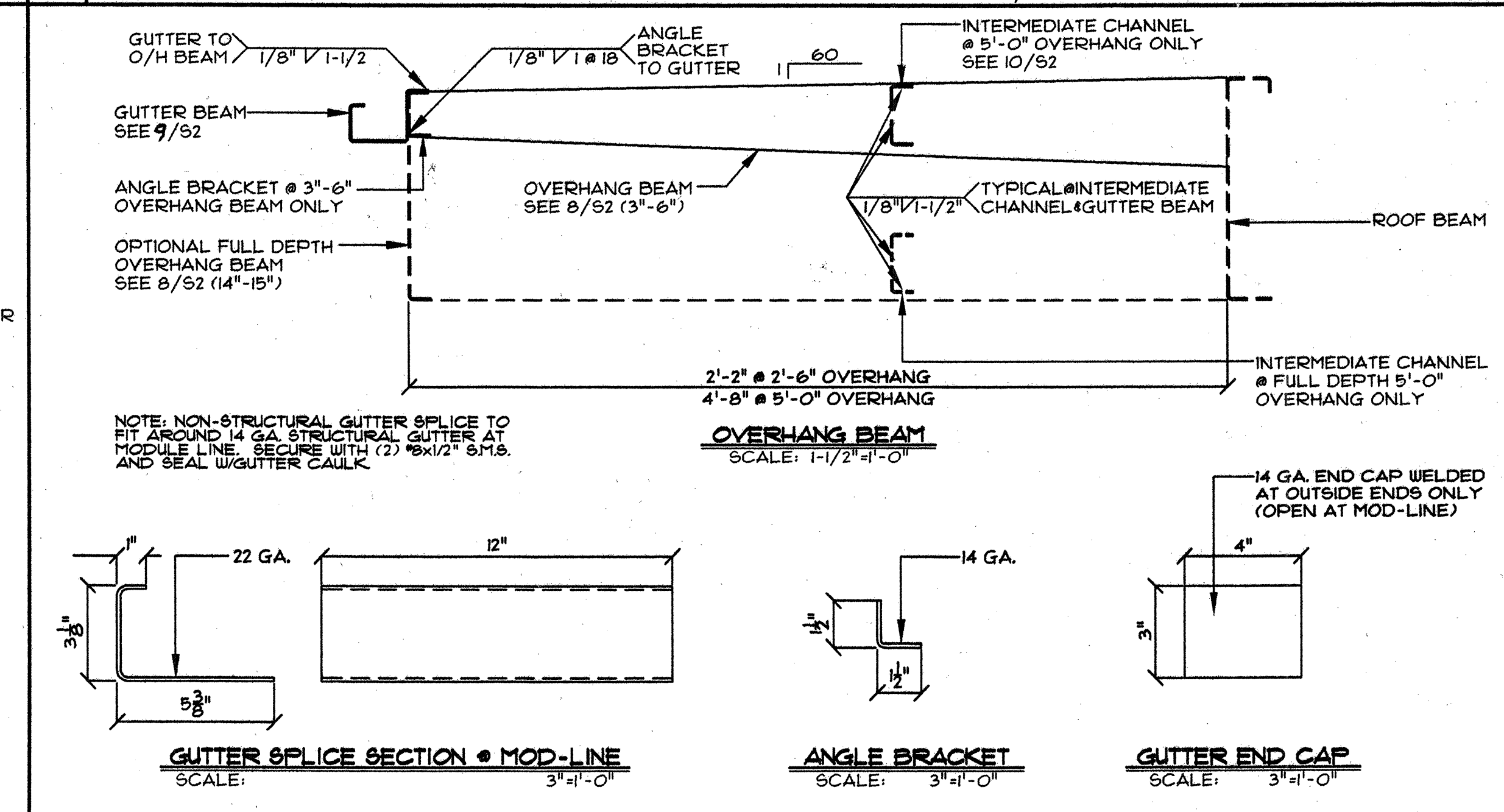
4 DOOR HEAD (JAMB SIM'L)
SCALE: 3/4" = 1'-0"



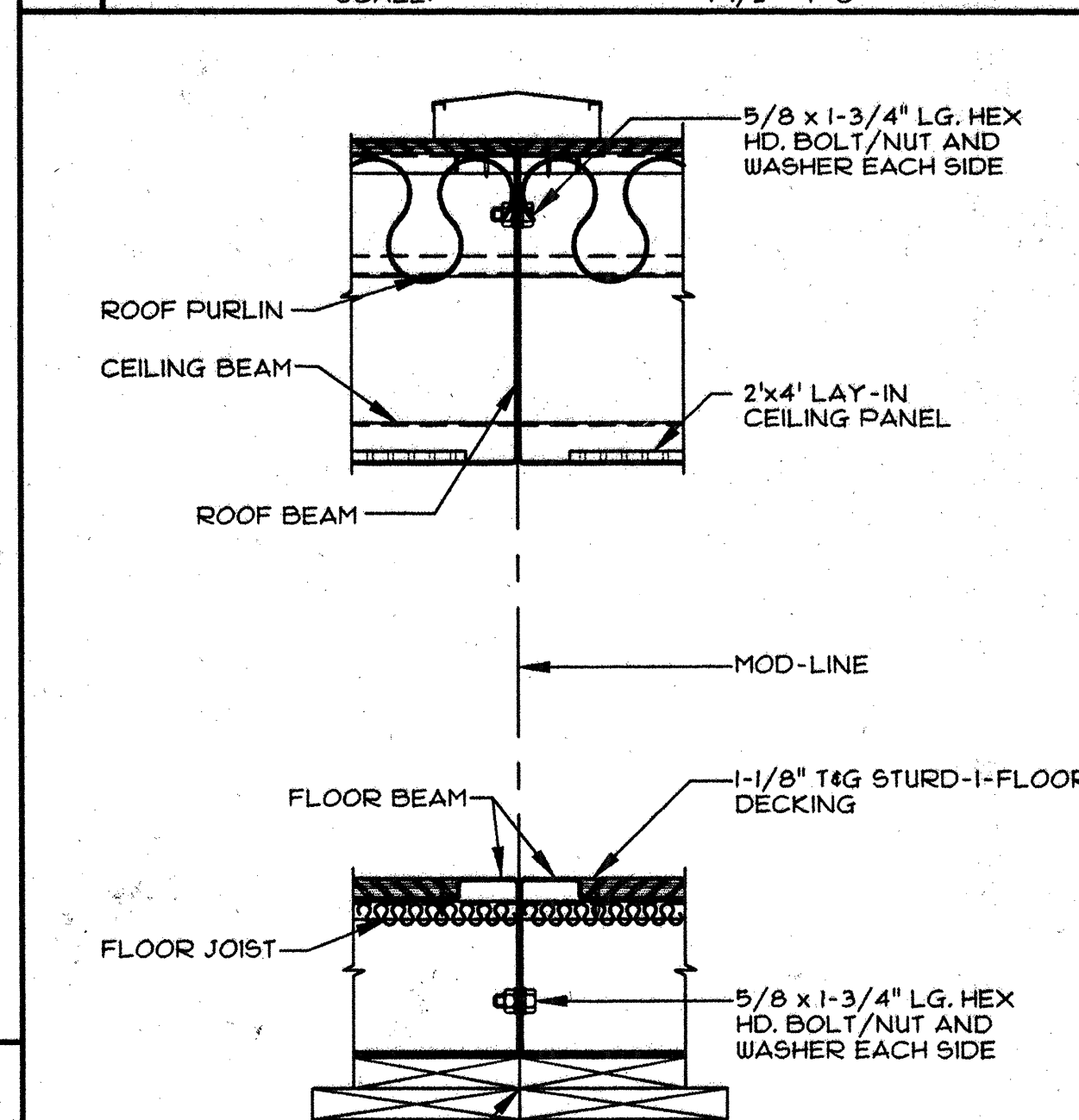
5 WINDOW SILL
SCALE: 3/4" = 1'-0"



6 DOOR SILL
SCALE: 3/4" = 1'-0"



8 OVERHANG SECTION & GUTTER DETAILS
SCALE: AS NOTED



10 WALL SECTION AT MOD-LINE
SCALE: 1/2" = 1'-0"

11 APPROVALS

REVISION DATE: BY:

DATE:

THIS MODULAR BLDG. HAS BEEN ENGINEERED BY A REGISTERED STRUCTURAL ENGINEER AND PREVIOUSLY REVIEWED & APPROVED BY THE DIVISION OF THE STATE ARCHITECT, FIRE & LIFE SAFETY AND ACCESS COMPLIANCE SECTION

CONFIDENTIAL MATERIAL - THESE DOCUMENTS ARE THE PROPERTY OF AND ARE NOT TO BE REPRODUCED OR DISTRIBUTED WITHOUT FULL KNOWLEDGE AND WRITTEN CONSENT FROM ENVIROPLEX, INC. © COPYRIGHT 1999 ENVIROPLEX, INC. (ALL DRAWINGS PREPARED BY ENVIROPLEX, INC.)

JH Lawder, Inc. Structural Engineers
777 18th Street Modesto, CA 95354
(209) 521-1140 Fax (209) 521-1106

JOHN R. LAWDER
No. 52310
Exp. 3-31-01
STRUCTURAL
STATE OF CALIFORNIA

ENVIROPLEX, INC.
4777 E. CARPENTER ROAD STOCKTON, CA. 95215

SECTIONS AND DETAILS

A4