



GENERAL NOTES

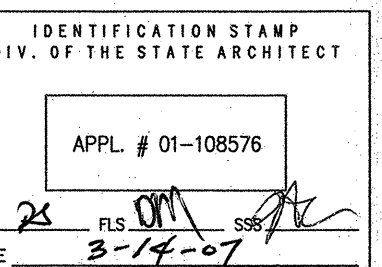
- A. CONTRACTOR SHALL FIELD VERIFY ALL EXISTING CONDITIONS. NOTIFY ARCHITECT IMMEDIATELY OF ANY DISCREPANCIES PRIOR TO CONSTRUCTION.
- B. SEE MECH. DWGS. FOR EXTENT OF MECH. WORK.
- C. SEE ELECT. DWGS. FOR EXTENT OF ELECT. WORK.
- D. SEAL ALL PIPE / DUCT PENETRATIONS THROUGH WALLS.

KEYNOTES

- 1. INSTALL 2X4 SUSPENDED ACOUSTIC CEILING GRID & TILES TO MATCH (E)
- 2. (E) EXPOSED CONCRETE SLAB OR WAFFLE SLAB CEILING.
- 3. (E) 2X4 SUSPENDED ACOUSTIC CEILING GRID & TILES TO REMAIN.
- 4. CEILING SURFACE MOUNTED LIGHTING, SEE ELECTRICAL DWG.
- 5. WALL ABOVE MARKER BOARD, SEE INTERIOR ELEVATIONS ON SHEET A4.02.
- 6. REINSTALL (E) PROJECTOR & MOUNT. SEE DETAIL 12/A5.02 FOR MOUNTING.
- 7. REINSTALL SCREEN AND SPEAKERS.
- 8. PROJECTOR MOUNT, SEE DETAIL 12/A5.02 FOR MOUNTING.
- 9. SCREEN, SEE DETAIL 14/A5.02 FOR MOUNTING.
- 10. CABLE TRAY +8"-6" A.F.F., S.E.D.
- 11. EXISTING SURFACE MOUNTED 2X4 FLORESCENT LIGHTING TO REMAIN
- 12. CAREFULLY REMOVE EXISTING SUSPENDED CEILING SYSTEM TO ACCOMPLISH MECHANICAL DEMOLITION AND MECHANICAL SYSTEM REPLACEMENT. REINSTALL TO MATCH EXISTING CONDITION.
- 13. UNISTRUT P-1000 TYP. RIGID ATTACHMENT TO WALLS. SEE DETAIL 8/A5.01.
- 14. 1/2" Ø ROD HANGARS TYP., SEE DETAIL 8/A5.01.
- 15. LIGHT FIXTURES ATTACHED PER DETAIL 8/A5.01.
- 16. ACOUSTICAL FABRIC PANEL TO MATCH (E) SIZE, SEE DETAIL 16/A5.02.

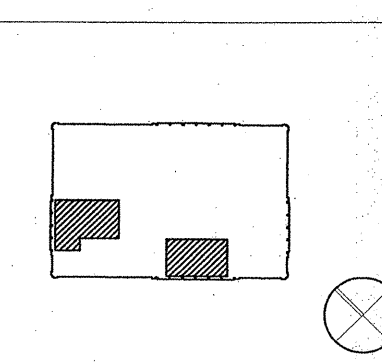
LEGEND

- (E) 2'X4' ACOUST. LAY-IN CEILING TO REMAIN
- 2'X4' ACOUST. LAY-IN CEILING TO MATCH (E)
- 2X4 SURFACE MOUNTED LIGHTING, SEE ELECTRICAL PLAN
- 4' SURFACE MOUNTED LIGHTING, SEE ELECTRICAL PLAN
- 18"X18" ACOUSTICAL FABRIC PANEL

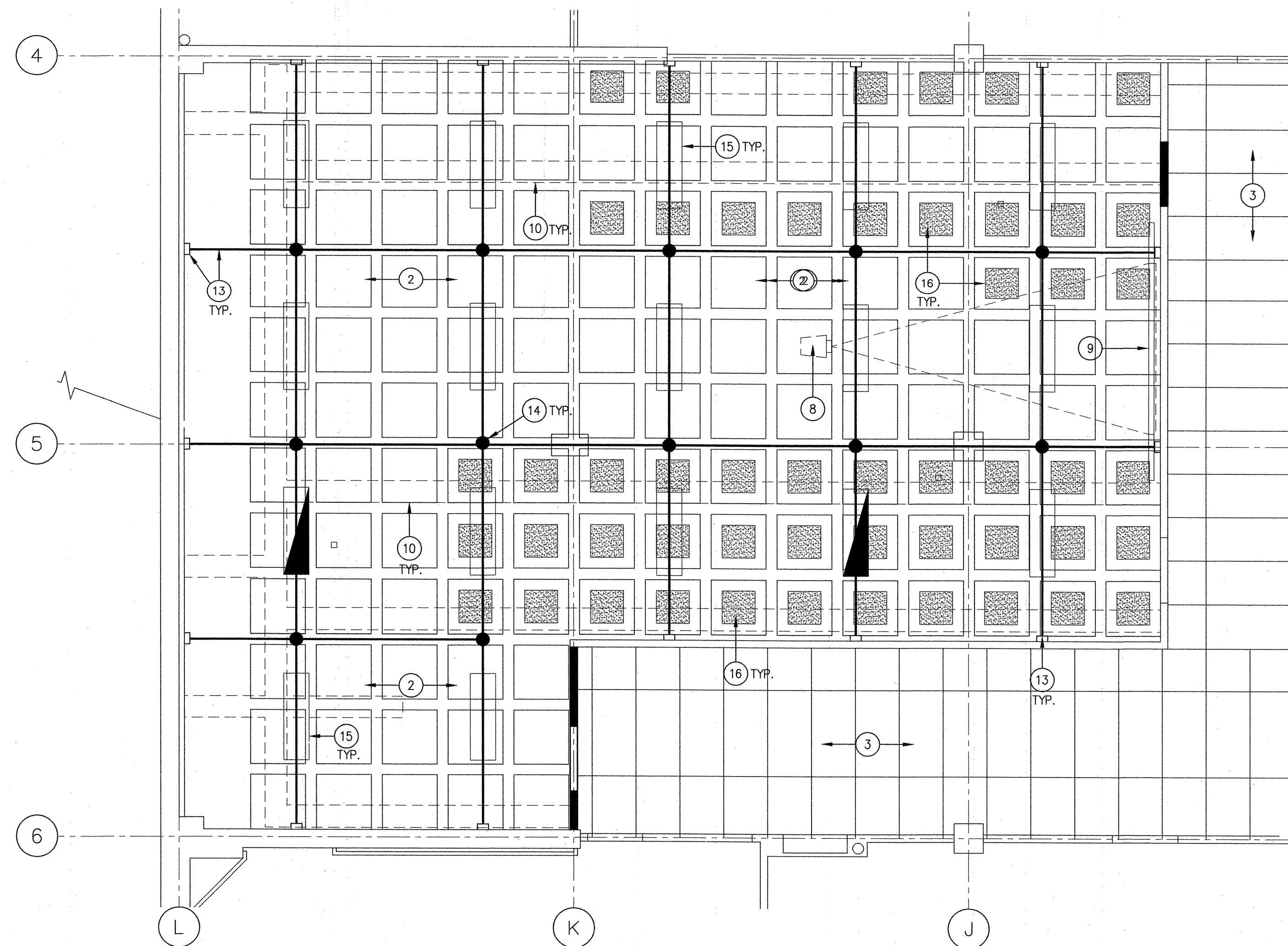


02.02.07 DSA SUBMITTAL
03.14.07 DSA BACKCHECK

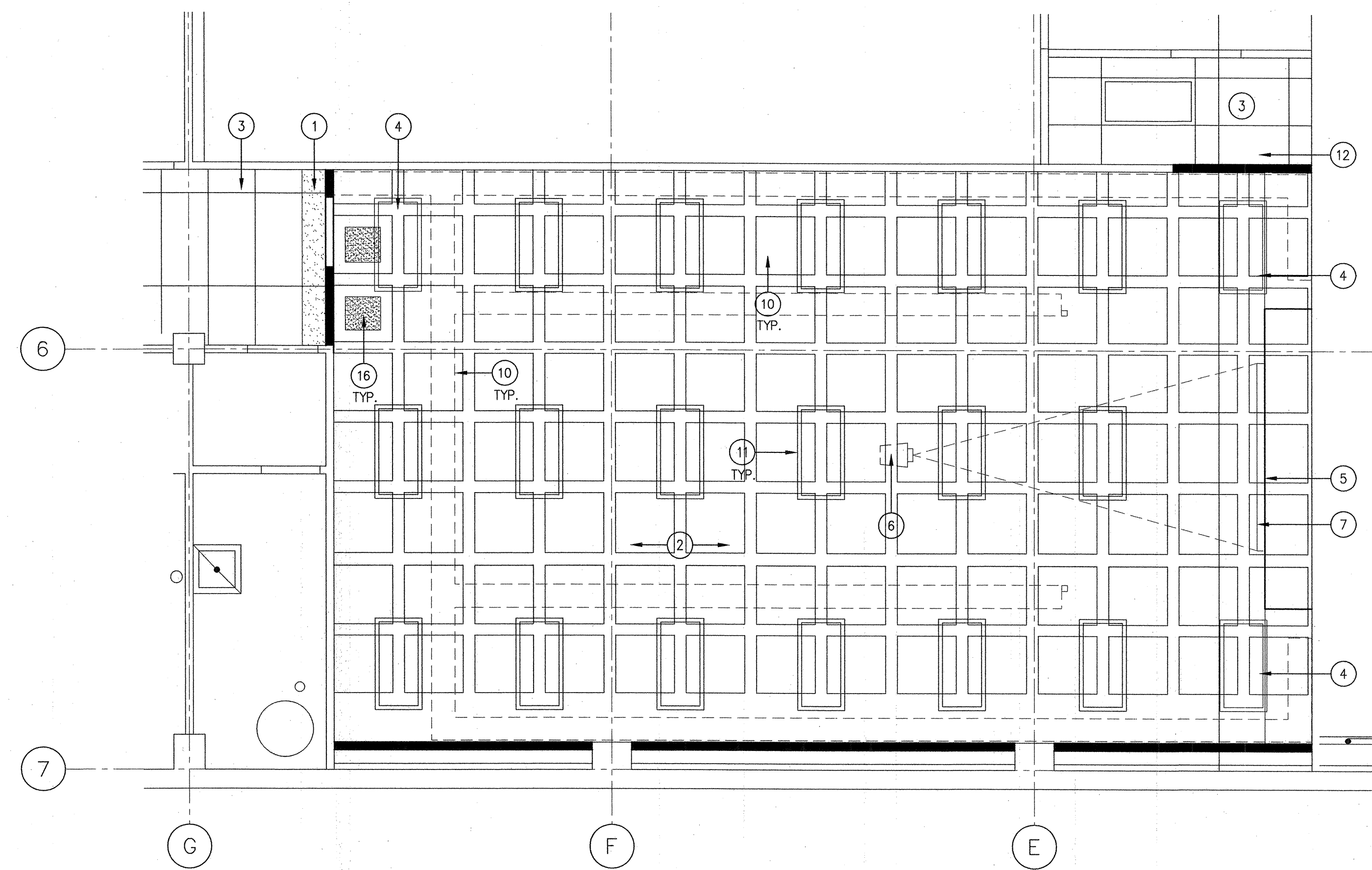
rev. date issue



STEINBERGARCHITECTS
project no: 06044 date: 02-02-07
drawn by: JC checked by: RS
scale: 1/4"=1'-0"



1 ROOM 2111 REFLECTED CEILING PLAN
1/4" = 1'-0"



2 ROOM 2108 REFLECTED CEILING PLAN
1/4" = 1'-0"

Copyright © 2007 Steinberg Architects, Inc. All rights reserved. This drawing is the property of Steinberg Architects, Inc. and may not be reproduced, copied, or transmitted in any form without the express written consent of Steinberg Architects, Inc.

P:\2006\06-04-08_Skyline_College_Bldg_2_Tcom_Classroom_Plan_A4.02_Plan_V14402.dwg
Printed on: 03/14/07 10:50 AM by: jyc