

REVISION DATE:	BY:

- WALL CLOCK: 12" @ 14" AFF. MAX. WITH EAGLE CLOCK RECEPTACLE 1/8" VAC. R4H INC. OR EQUAL.
- PANEL BOARDS: FLUSH MOUNTED W/ HINGED DOORS AND INDEXED CARD HOLDERS. CIRCUIT BREAKER(S) WILL HAVE AN APPROPRIATE UL LABEL LISTED.
- RECEPTACLES: EAGLE 270V OR EQUAL @ 18" AFF.
- LIGHT SWITCHES: EAGLE 130V OR EQUAL @ 48" AFF. MAX.
- LIGHTING FIXTURE: 24"x48" FLUORESCENT DROP-IN TYPE FIXTURES WITH 35 WATT LAMPS AND ENERGY SAVING BALLAST, CRESENT, LITHONIA OR EQUAL.
- ELECTRIC METALLIC TUBING: COUPLINGS AND FLEX CONDUIT GALVANIZED OR SHERARDIZED.
- CONDUCTORS: COPPER, INSULATED FOR 600 VOLTS, TYPE THHN FOR SIZES #12 TO #6, TYPE THW FOR LARGER SIZES, MINIMUM SIZE #12.
- SEE SHEET A2 FOR HVAC 4 THERMOSTAT SPECIFICATION.
- LIGHTED EXIT SIGN EDWARDS MODEL #1646 W/ #1759 POWER PAK OR EQUAL.

3 ELECTRICAL SPECIFICATIONS

- CERTIFIED LUMINARIES/BALLASTS PER SEC. 2-5314 (b).
- INDEPENDANT CONTROL WITHIN ENCLOSED AREAS PER SEC. 2-5319 (a).
- MANUAL SWITCHING READILY ACCESSIBLE PER SEC. 2-5319 (b).
- REDUCTION OF LIGHTING LOAD TO AT LEAST 50% PER SEC. 2-5319 (c).
- SEPARATE SWITCHING OF DAYLIT AREAS PER SEC. 2-5319 (d).
- TANDEM WIRING OF 4 LAMP LUMINARIES PER SEC. 2-5319 (h).

5 ELECTRICAL ENERGY COMPLIANCE

PANEL SCHEDULE: "A"
MOUNTING: FLUSH INTERIOR
NEMA-1
AMPS: 200
PHASE: 1Ø
VOLTS: 120/240
WIRE: 3Ø

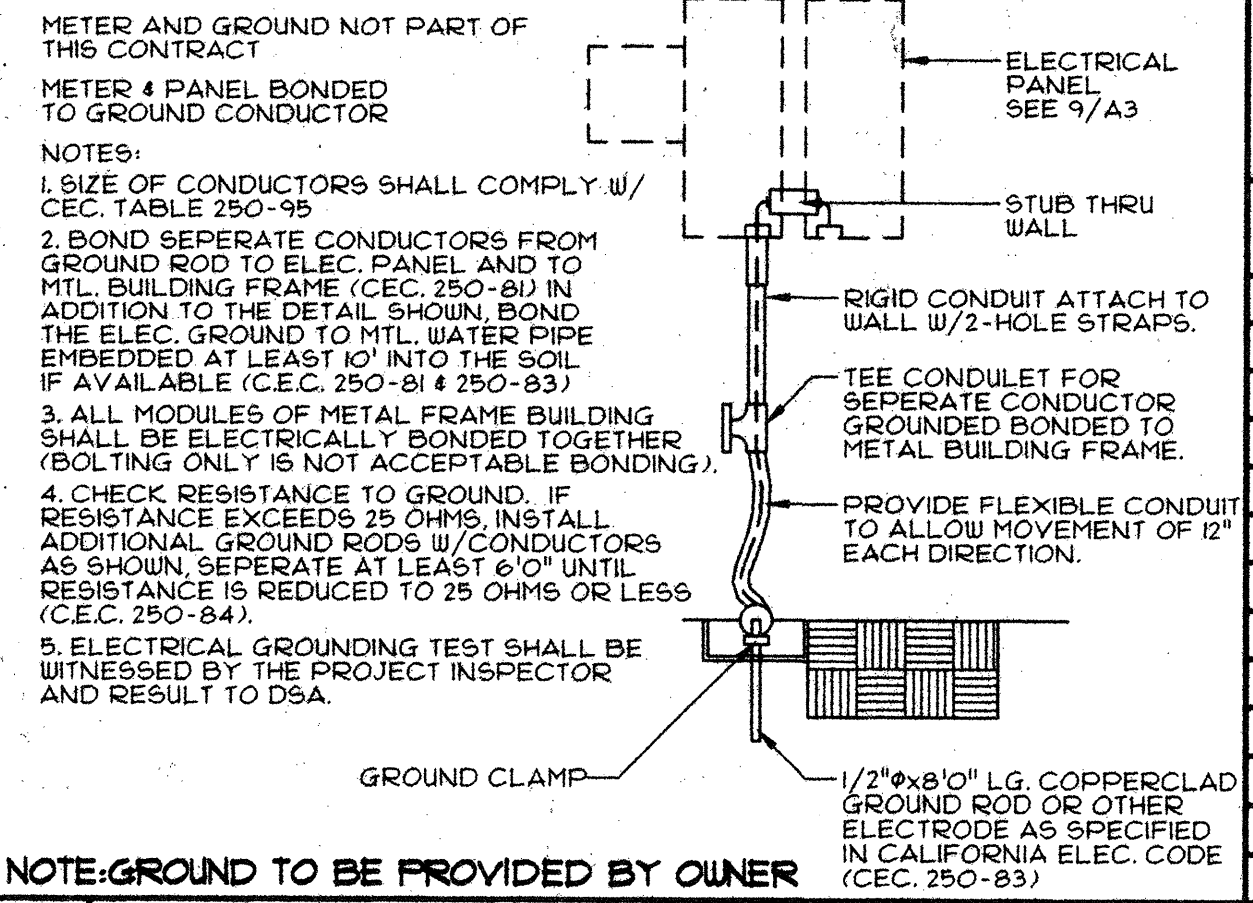
DESCRIPTION	LOAD	BRKR	BRKR	LOAD	DESCRIPTION		
HVAC UNIT	1040	50	1	2	50	9600	RANGE
WASHER	1800	20	5	6	30	6400	DRYER
RECEPTACLE	1800		7	8	2		
RECEPTACLE	1800		9	10	20	750	LIGHTING-A
DISHWASHER	1800		11	12	20	750	LIGHTING-B
DISP/FRIG/GFI	1800		13	14	20	1650	WATER HEATER
			15	16			
			17	18			
			19	20			
			21	22			
			23	24			
	20	KVA	TOTAL	19.2			

- FIRE ALARM SHALL FURNISHED BY OWNER AND SHALL CONFORM TO THE CALIFORNIA BUILDING CODE SECTION 809 AND CALIFORNIA ELECTRICAL CODE ARTICLE 160.
- INSTALLATION OF THE FIRE ALARM SYSTEM SHALL NOT BE STARTED UNTIL DETAILED PLANS AND SPECIFICATIONS, INCLUDING STATE FIRE MARSHAL LISTING NUMBERS FOR EACH COMPONENT OF THE SYSTEM HAVE BEEN APPROVED BY THE STATE FIRE MARSHAL, OSA.
- UPON COMPLETION OF THE INSTALLATION OF THE FIRE ALARM SYSTEM A SATISFACTORY TEST OF THE ENTIRE SYSTEM SHALL BE MADE IN THE PRESENCE OF THE ENFORCING AGENCY.

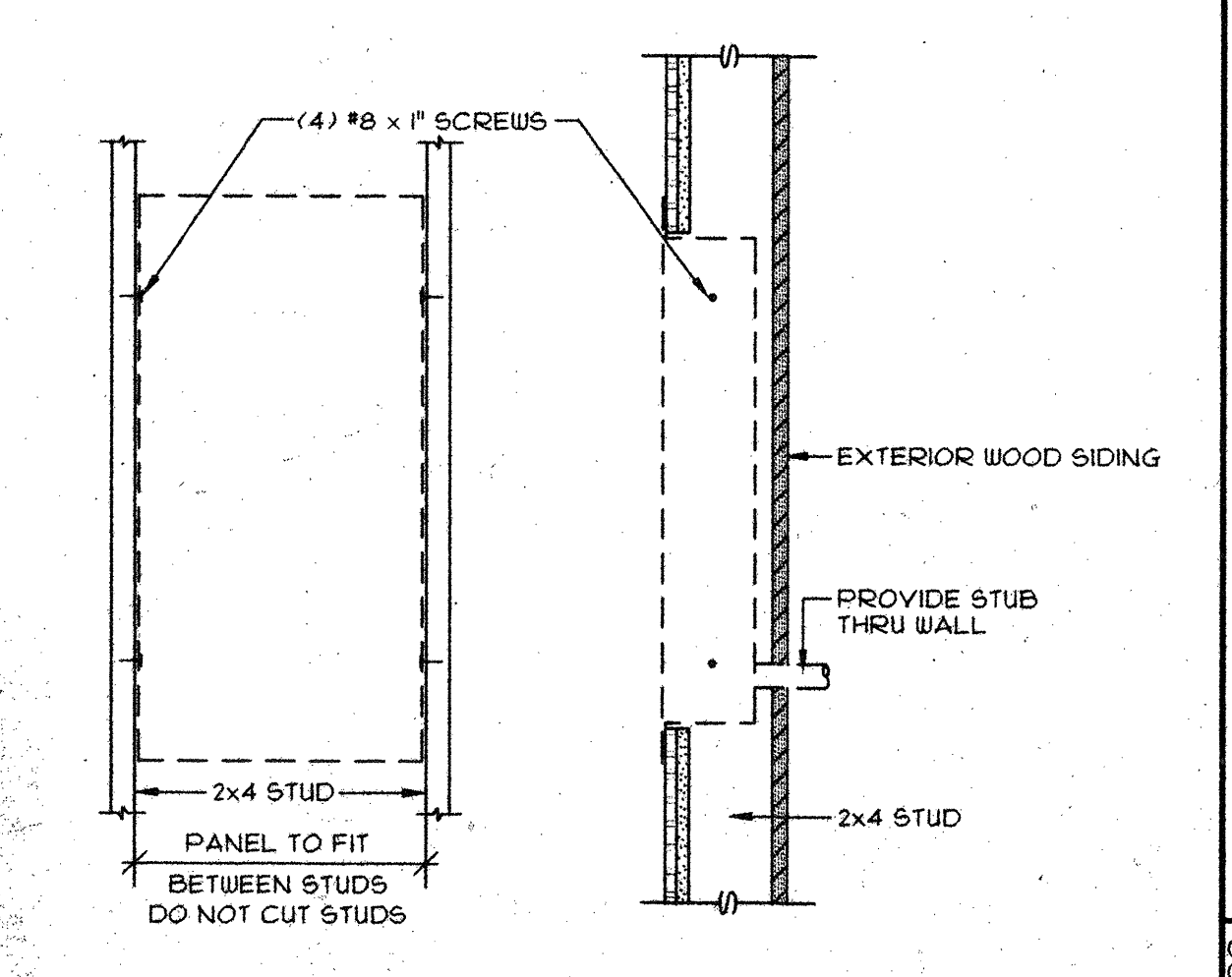
2 FIRE PROTECTION

- DUPLEX RECEPTACLE 125V, 15A, @ 18" AFF, UNLESS NOTED
- PROGRAMMABLE DIGITAL THERMOSTAT @ 48" AFF. MAX.
- JUNCTION BOX ABOVE IN ATTIC OR WALLS
- SWITCH @ 48" AFF. MAX. TO CENTER OF BOX
- EXTERIOR LIGHT FIXTURE
- WALL CLOCK W/ SINGLE CLOCK RECEPTACLE 125V, @ 14"
- OUTLET BOX @ 48" AFF. TO CENTER OF BOX FOR FUTURE FIRE ALARM PULL STATION W/ CONDUIT STUB TO ATTIC (SEE NOTE NO. 1 OF FIRE PROTECTION).
- OUTLET BOX @ 80" AFF. FOR FUTURE FIRE ALARM FLASHING VISUAL WARNING DEVICE. W/ CONDUIT STUB TO ATTIC
- WATER PROOF BELL BOX UNDER EAVE FOR FUTURE FIRE ALARM AUDIBLE WARNING DEVICE, SEE NOTE NO. 1 OF FIRE PROTECTION
- J-BOX FOR FUTURE PHONE @ 18" AFF, UNLESS NOTED W/ 1/2" CONDUIT STUB TO ATTIC
- LIGHT/FAN UNIT IN CEILING

4 ELECTRICAL SYMBOLS



6 ELECTRICAL GROUNDING DETAIL



7 PANEL SCHEDULE

DIVISION OF THE STATE ARCHITECT OFFICE OF REGULATION SERVICES

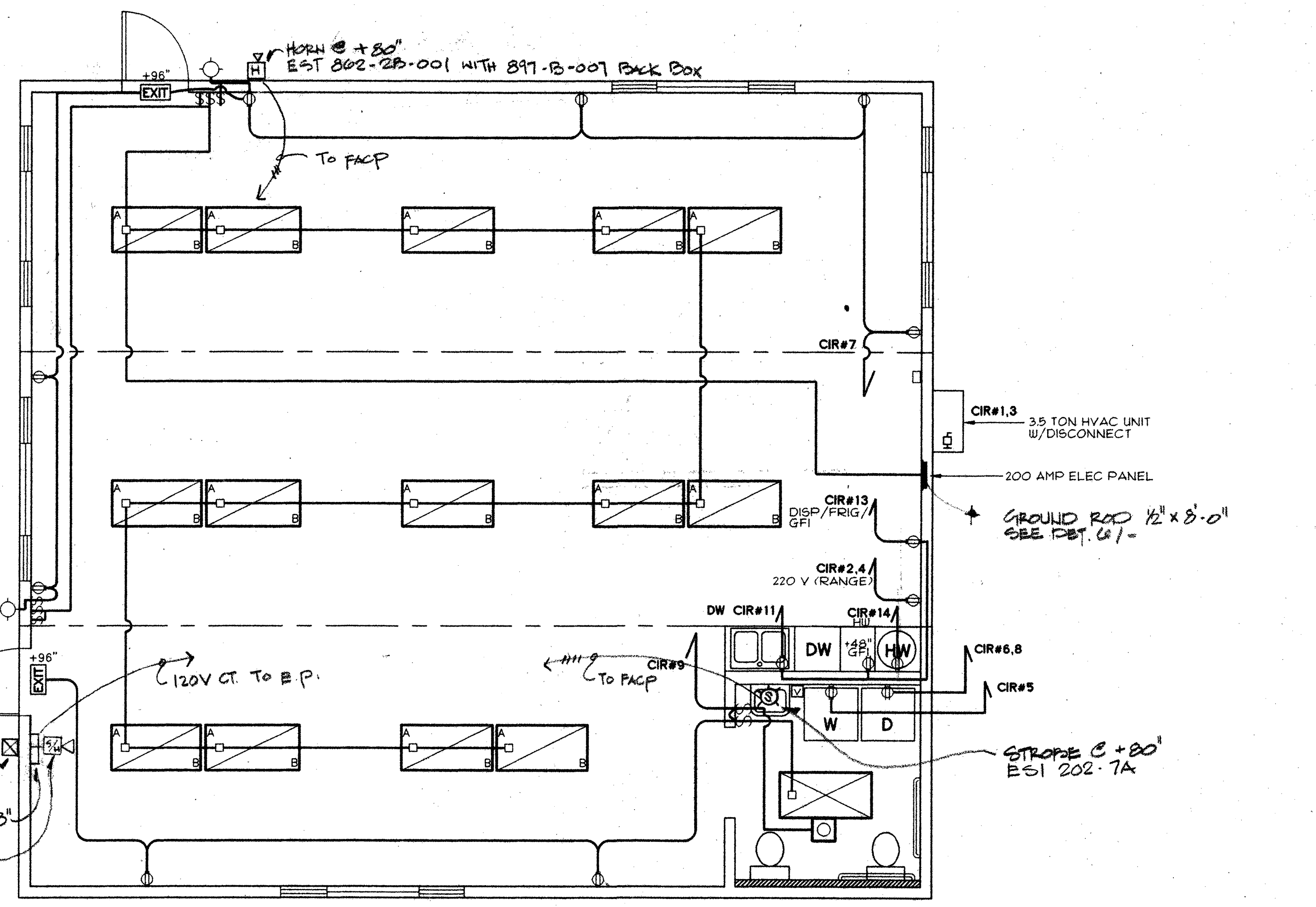
APPROVED ARCHITECT
PAUL D. CHAMBERLIN
C-5310
10.31.17
APR 6 9 04
APR 21 1996

DESIGN CRITERIA
ROOF: DEAD LOAD - 8.0 PSF
ROOF: LIVE LOAD - 20.0 PSF (SNOW)
FLOOR: DEAD LOAD - 8.0 PSF
FLOOR: LIVE LOAD - 50.0 PSF
WALLS: DEAD LOAD - 8.0 PSF
WIND: 80 MPH; EXP. C - 26.5 PSF (PER DSA IR 23-16)
SEISMIC: ZONE 4, R_w=6, C=2.75

CONFIDENTIAL MATERIAL - THESE DOCUMENTS ARE THE PROPERTY OF AND ARE NOT TO BE REPRODUCED OR DISTRIBUTED WITHOUT FULL KNOWLEDGE AND WRITTEN CONSENT FROM ENVIROPLEX, INC.
© COPYRIGHT 1993 ENVIROPLEX, INC. (DRAWINGS PREPARED BY ENVIROPLEX, INC.)

9 ELECTRICAL PANEL MTG. DETAIL

10 APPROVALS



MANUAL PULL STATION 348" E-1 270 SERIES
FIRE ALARM CONTROL PANEL C+48" E-1 121
HORN / STROPE C +80" E-1 792-7A

NOTE: ELECTRICAL WIRING IS FOR DIAGRAMMATIC PURPOSES ONLY

FIRE ALARM NOTES:
SEQUENCE OF OPERATION
WHEN THE FIRE ALARM IS TRIGGERED IN THE PORTABLE BUILDING, THE DIRECTOR OF CHILD CARE CENTER (LOCATED ADJACENT TO THE PORTABLE BLDG.) SHALL NOTIFY CAMPUS SECURITY OFFICE BY PHONE.

1 ELECTRICAL POWER & LIGHTING PLAN
SCALE: 1/4"=1'-0"

9 ELECTRICAL PANEL MTG. DETAIL
SCALE: 1"=1'-0"

10 APPROVALS