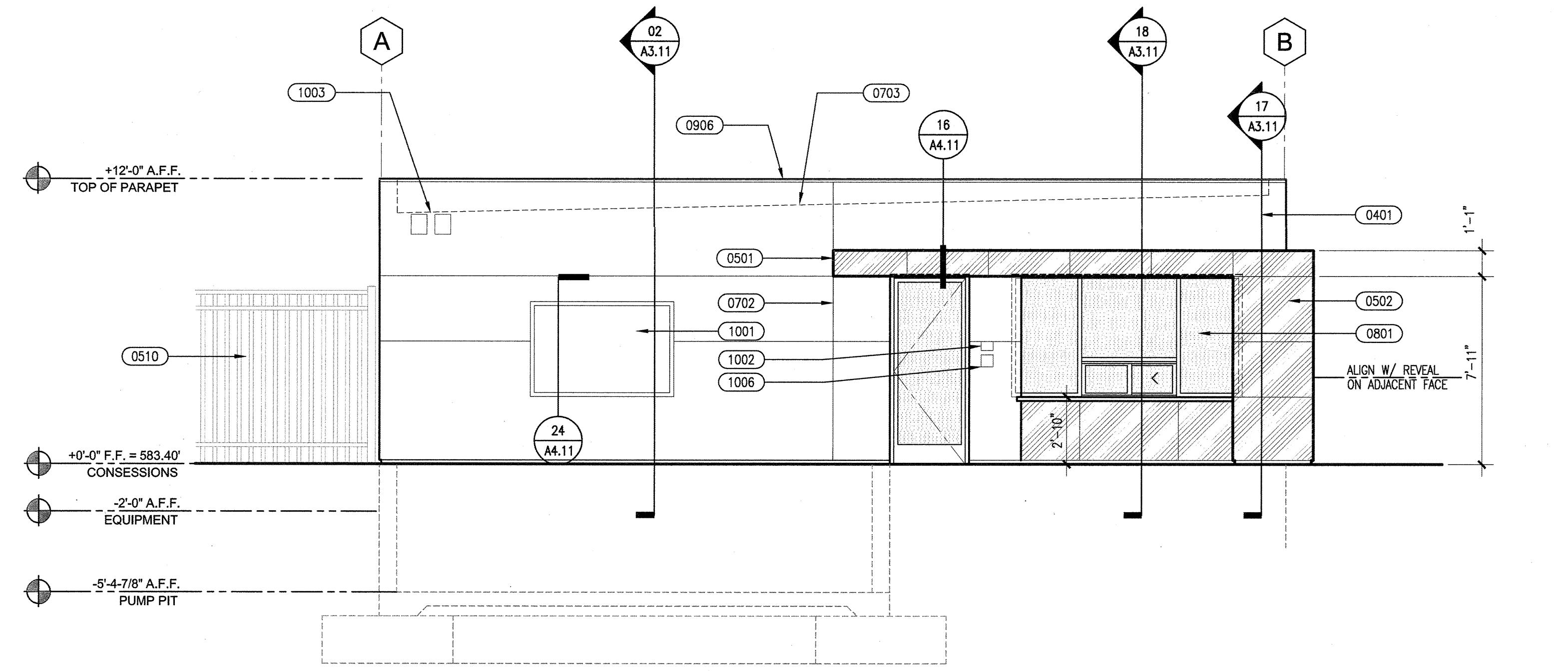
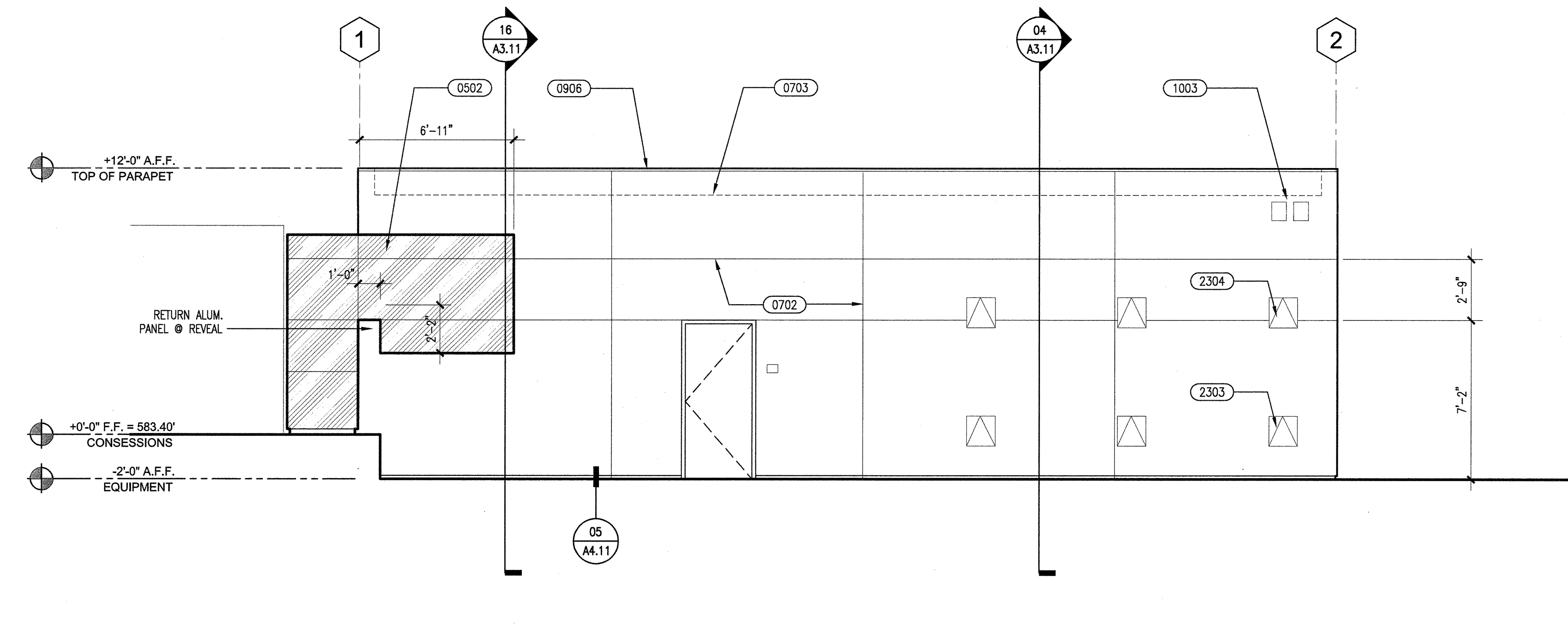


KEYNOTES

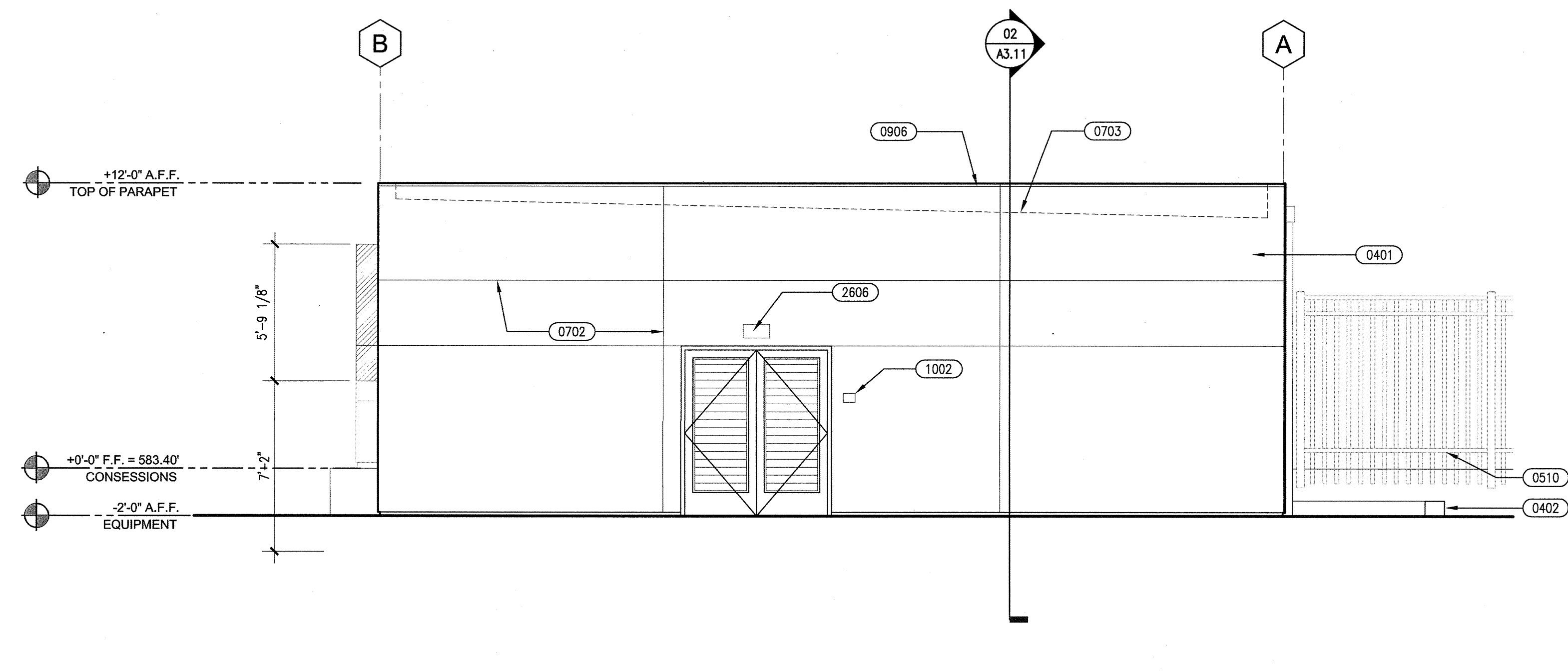
- (0401) - CMU WALL WITH CEMENT PLASTER FINISH
- (0402) - CMU RETAINING WALL WITH CEMENT PLASTER FINISH
- (0501) - ALUMINUM CANOPY
- (0502) - PAINTED BRAKE ALUMINUM PANELS
- (0506) - OVER FLOW DRAIN 4"x8" - 2" ABOVE ROOF, W/ DRIP FLASHING, SEE DETAIL 22/A4.11
- (0507) - ROOF DRAIN SEE DETAIL 23/A4.11
- (0508) - 4"x4", 18 GA. GALV. METAL DOWNSPOUT, W/ SPLASH BLOCK
- (0510) - POOL ENCLOSURE FENCE/GATE
- (0702) - 1/2" METAL REVEAL IN PLASTER
- (0703) - LINE OF ROOF SHOWN DASHED
- (0801) - 2"x4" STOREFRONT WINDOW SYSTEM W/ PASS THRU
- (0906) - GALVANIZED METAL COPING, PAINTED
- (1001) - 4X6 GLASS BULLETIN BOARD
- (1002) - ROOM IDENTIFICATION SIGNAGE, SEE 23 & 22/A4.12
- (1003) - BUILDING IDENTIFICATION SIGNAGE 10" HIGH PIN MOUNT CAST ALUM. LETTERS BLACK
- (1006) - MAXIMUM OCCUPANT CAPACITY SIGNAGE, SEE 24/A4.12
- (2303) - AIR INTAKE LOW - COORDINATE SIZE W/ POOL EQUIPMENT
- (2304) - EXHAUST HIGH - COORDINATE SIZE W/ POOL EQUIPMENT
- (2606) - WALL PACK YARD LIGHTING



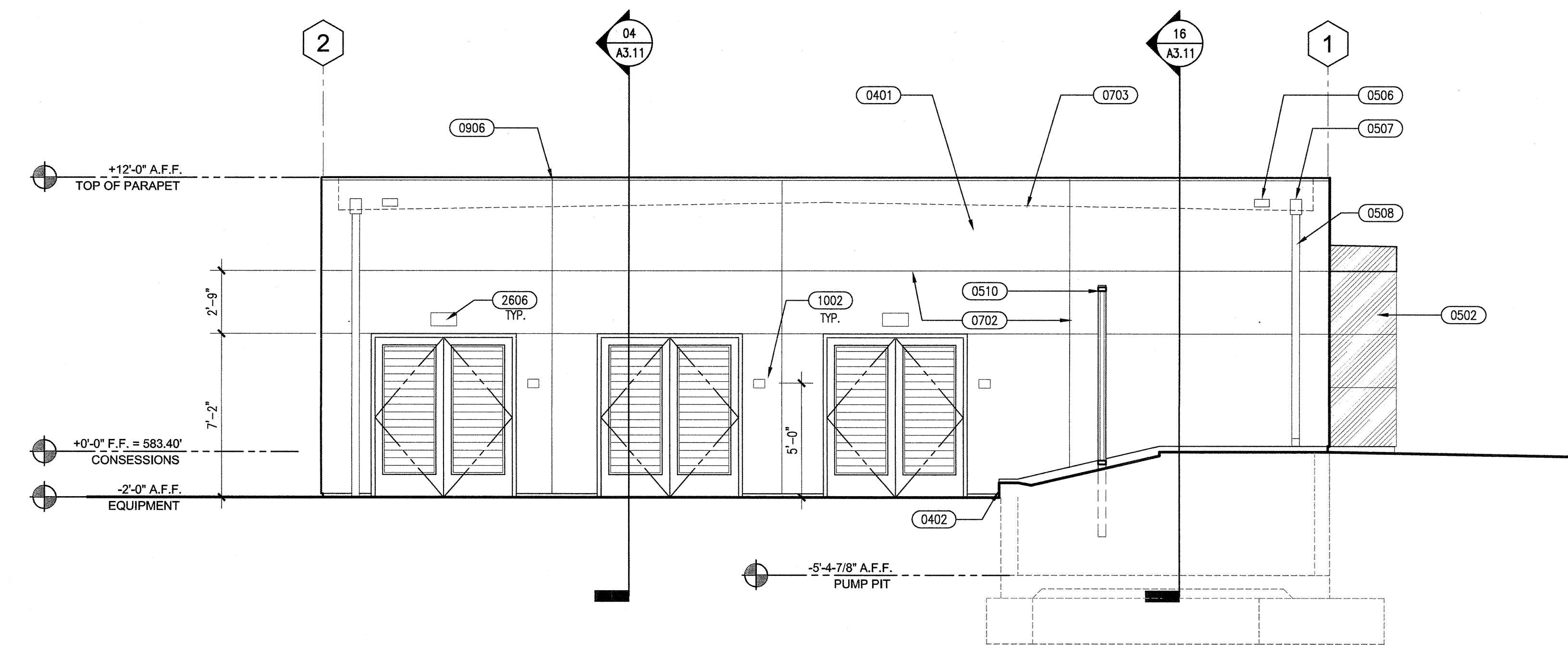
WEST ELEVATION 1/4" = 1'-0" 14



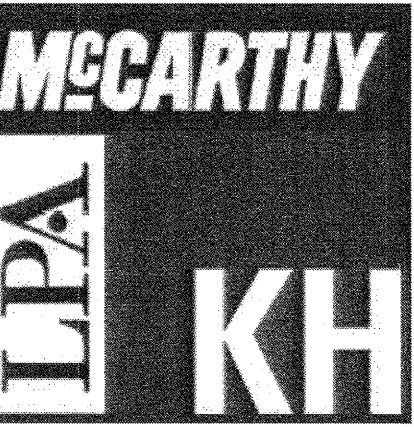
SOUTH ELEVATION 1/4" = 1'-0" 02



EAST ELEVATION 1/4" = 1'-0" 16



NORTH ELEVATION 1/4" = 1'-0" 04



McCarthy Building Companies, Inc.
343 Sansome Street, 14th Floor
San Francisco, California 94104
P 415 364-1339
F 415 397-5999



IDENTIFICATION STAMP
DIV. OF THE STATE ARCHITECT
OFFICE OF REGULATION SERVICE
APPL. #: 01-110097
AC. [Signature] FL. [Signature] CS. [Signature] D. [Signature]
DATE: APR 09 2009
FILE NUMBER:

This set of other project documents and all files, graphics and design incorporated herein are instruments of service. All project documents are the registered property of LPA, INC. LPA, INC. consents to be used in whole or in part for any project or purpose except as described in the professional agreement between McCarthy and the Owner. LPA hereby grants permission for the user to print, photocopy, reproduce or modify (provided) in any way related but not including the right to publish, transmit, disseminate, create or distribute using directly or indirectly from project documents. Project documents should be kept in a safe and secure place. LPA and LPA's Consultants make no representation concerning the accuracy of documents and are not responsible for any discrepancies between project documents and the existing conditions.

© Copyright 2008

College of San Mateo
Site Package
San Mateo, CA
Developed for
San Mateo County Community College District

Date	Revised/Description
10 SEPT 2008	DSA SUBMITTAL
02 APRIL 2009	DSA FINAL

Job No. (FILED IN 27082.20) 27082.30
Date 09 APRIL 2009
Drawn by HE
Checked by JR
Scale AS SHOWN

EXTERIOR ELEVATIONS
A3.01