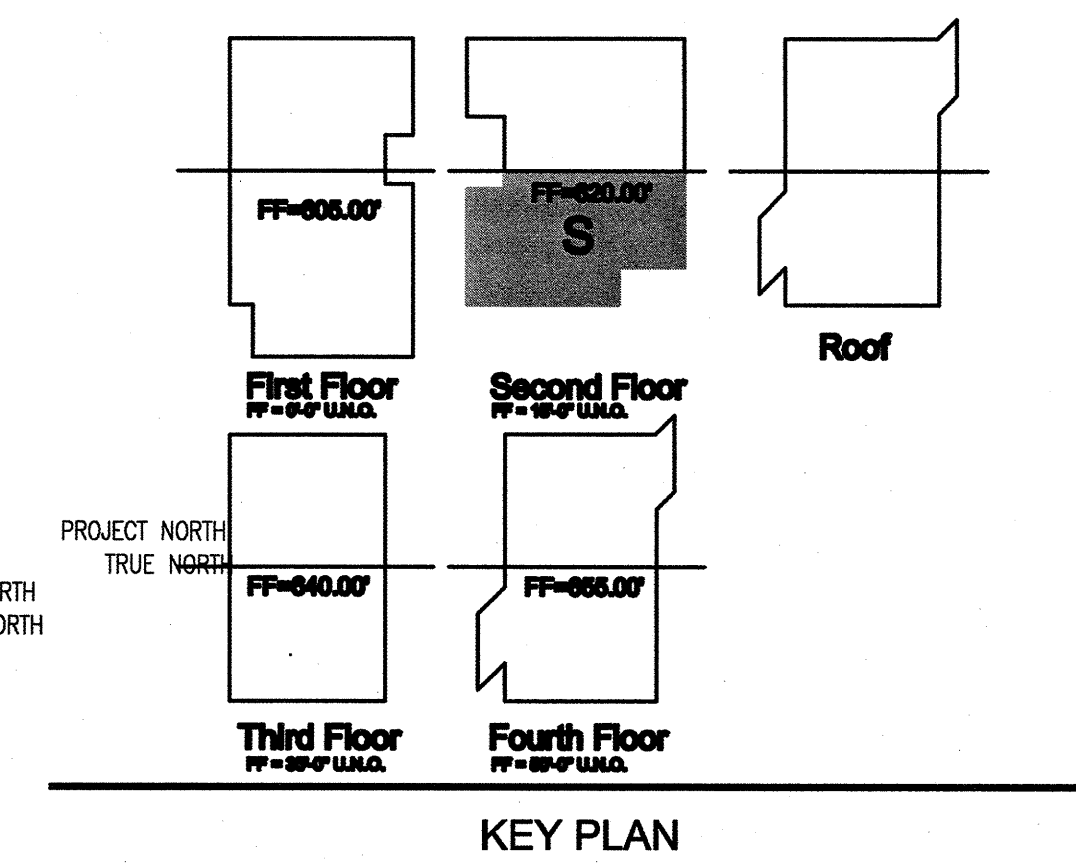


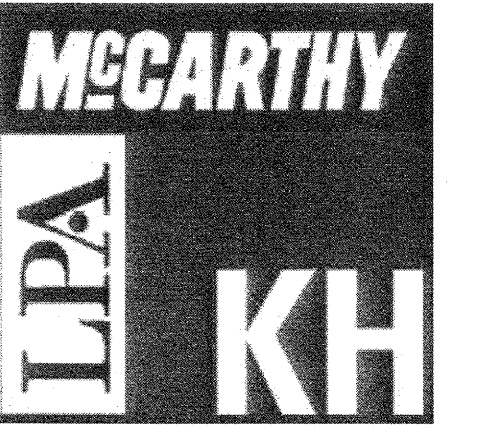
LEGEND

[Pattern]	CASEWORK, GROUP 1
[Pattern]	FURNITURE/EQUIPMENT SHOWN DASHED, N.I.C., GROUP 2
[Pattern]	CASEWORK PROVIDED BY FRANKLIN FIXTURES

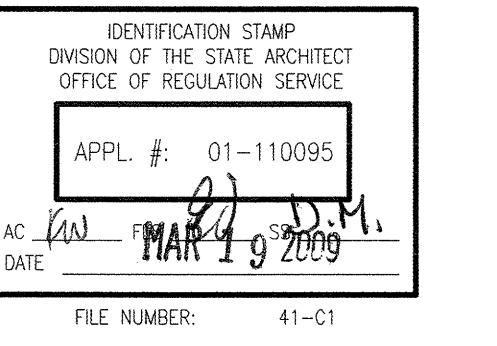
- GENERAL NOTES**
1. FURNITURE N.I.C., SHOWN FOR REFERENCE ONLY BANQUETTE @ WALL CFI
 2. FOR CASEWORK NOTES, SEE FLOOR PLANS
 3. LAYOUT PROVIDED TO COORDINATE POWER, LIGHTING, FINISH
 4. TIERED CLASSROOMS IN BASE BUILDING CONTRACT. REFER TO ENLARGED PLANS, SHEET 06,08/A41.8



SECOND FLOOR FURNITURE & EQUIPMENT (S), FOR REFERENCE 08



McCarthy Building Companies, Inc.
 343 Sansome Street, 14th Floor
 San Francisco, California 94104
 P 415 397-6151
 F 415 397-5999



The use of other project documents and all data, methods and design information herein are the property of LPA, Inc. LPA and its consultants are not responsible for the project or any portion thereof as described in the contract documents between McCarthy and the District. LPA hereby gives notice that any such project document may be modified or amended without notice and may be subject to change without notice to the recipient. LPA and its consultants do not warrant, either explicitly or implicitly, the accuracy, completeness, or timeliness of any information or data provided herein. LPA and its consultants make no representation concerning the accuracy or completeness of any information or data provided herein. LPA and its consultants make no representation concerning the accuracy or completeness of any information or data provided herein. LPA and its consultants make no representation concerning the accuracy or completeness of any information or data provided herein.

College of San Mateo
 Building 10N
 San Mateo, CA
 Developed for
 San Mateo County Community College District

Revision	Description	Date

Revision	Description	Date
00/00/00	100% Design Development	07/20/09
01/00/00	90% Construction Documents	08/18/09
02/00/00	80% Construction Documents	12/08/09
03/11/00	70% Construction Documents	03/11/09

Job No.	27082.20
Date	March 2009
Drawn by	
Checked by	
Scale	1/8" = 1'-0"

SECOND FLOOR FURNITURE & EQUIPMENT PLAN (S)