

LEGEND

- CASWORK, GROUP 1
- FURNITURE/EQUIPMENT SHOWN DASHED, N.I.C., GROUP 2
- CASWORK PROVIDED BY FRANKLIN FIXTURES

GENERAL NOTES

1. FURNITURE N.I.C., SHOWN FOR REFERENCE ONLY BANQUETTE @ WALL CFI
2. FOR CASWORK NOTES, SEE FLOOR PLANS
3. LAYOUT PROVIDED TO COORDINATE POWER, LIGHTING, FINISH
4. TIERED CLASSROOMS IN BASE BUILDING CONTRACT. REFER TO ENLARGED PLANS, SHEET 06,08/41.8

This set of other project documents and all ideas, aesthetics and design incorporated herein are the intellectual property of LPA, KH, LPA and KH and shall remain the property of LPA, KH, LPA and KH. No part of this project or any portion thereof may be reproduced or transmitted in any form or by any means, electronic, mechanical, photocopying, recording, or by any information storage and retrieval system, without the prior written consent of LPA and KH. LPA and KH's obligation to the recipient is limited to the design services provided. LPA and KH's obligation to the recipient is limited to the design services provided. LPA and KH's obligation to the recipient is limited to the design services provided.

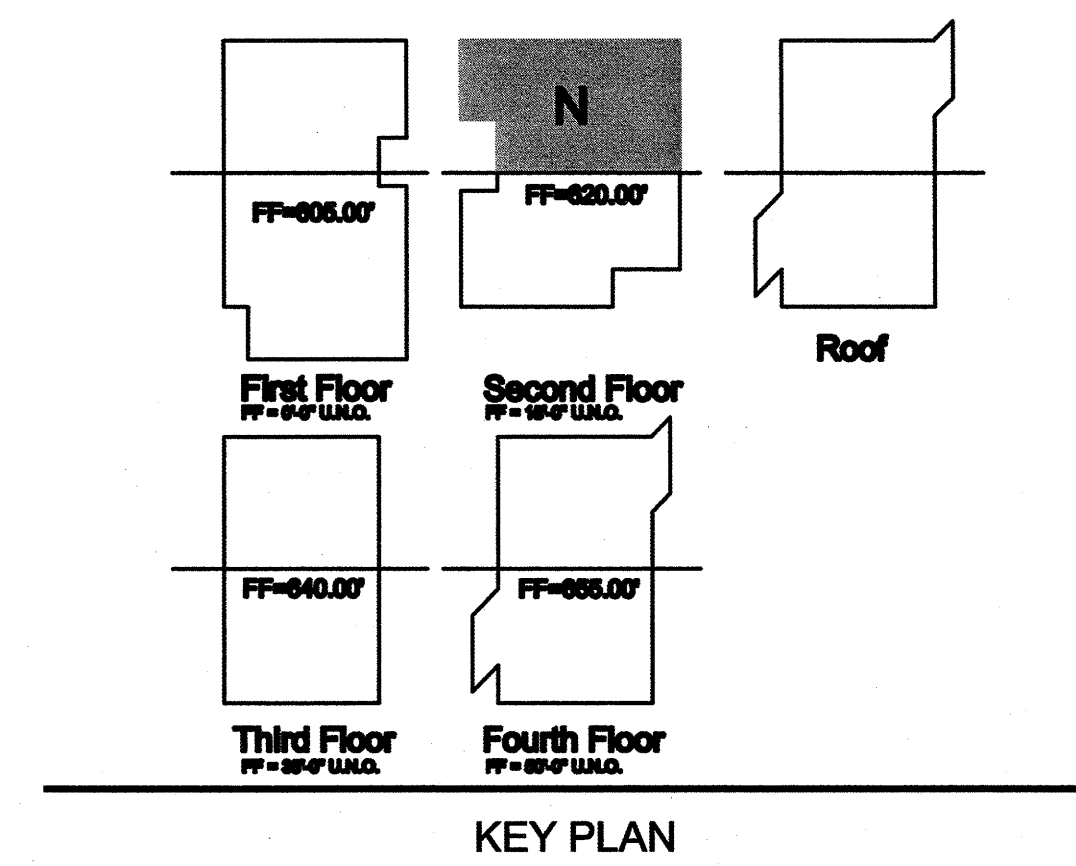
College of San Mateo Building 10N
San Mateo, CA
Developed for San Mateo County Community College District

Revision	Description	Date

Revision	Description	Date

Job No.	27082.20
Date	March 2009
Drawn by	
Checked by	
Scale	1/8" = 1'-0"

SECOND FLOOR FURNITURE & EQUIPMENT PLAN (N)
A28.3



SECOND FLOOR FURNITURE & EQUIPMENT PLAN (N), FOR REFERENCE 08