

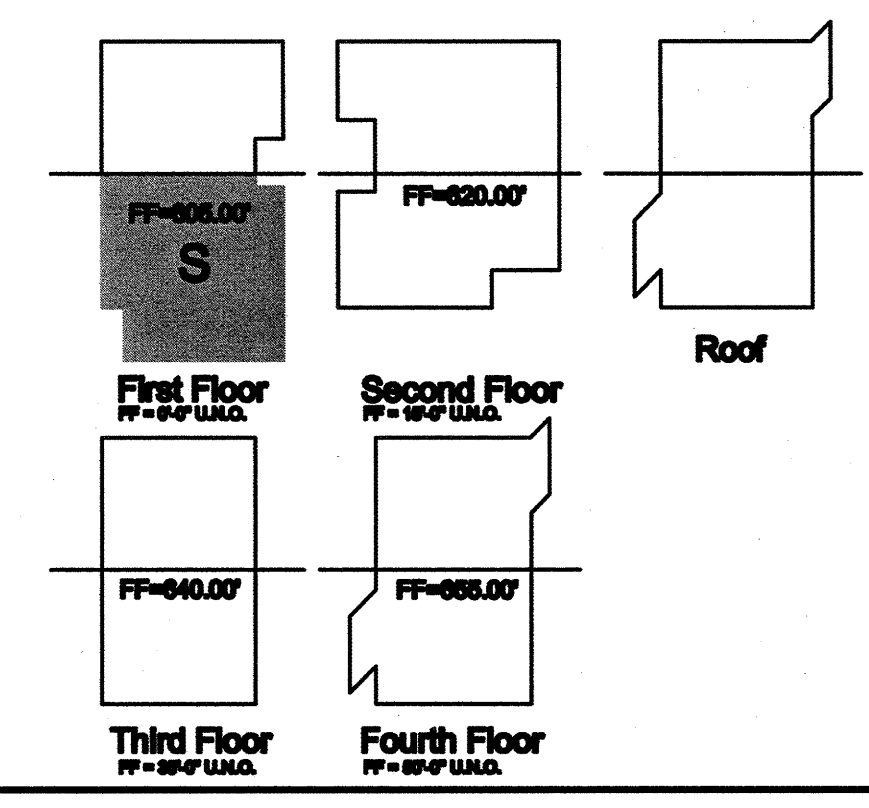


MATCH LINE - SEE SHEET A28.1

LEGEND

[Pattern]	CASEWORK, GROUP 1
[Pattern]	FURNITURE/EQUIPMENT SHOWN DASHED, N.I.C., GROUP 2
[Pattern]	CASEWORK PROVIDED BY FRANKLIN FIXTURES

- GENERAL NOTES**
1. FURNITURE N.I.C., SHOWN FOR REFERENCE ONLY BANQUETTE @ WALL CFO
 2. FOR CASEWORK NOTES, SEE FLOOR PLANS
 3. LAYOUT PROVIDED TO COORDINATE POWER, LIGHTING, FINISH
 4. TIERED CLASSROOMS IN BASE BUILDING CONTRACT. REFER TO ENLARGED PLANS, SHEET 06,08/411.8



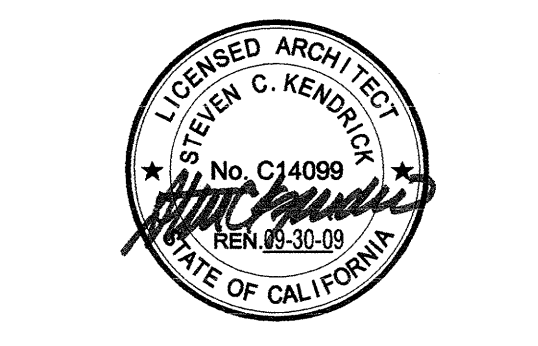
FIRST FLOOR FURNITURE & EQUIPMENT (S), FOR REFERENCE 08

McCarthy
LPA KH

McCarthy Building Companies, Inc.
 343 Sansome Street, 14th Floor
 San Francisco, California 94104
 P 415 397-5157
 F 415 397-5999

IDENTIFICATION STAMP
 DIVISION OF THE STATE ARCHITECT
 OFFICE OF REGULATION SERVICE

APPL # 01-110095
 DATE MAR 19 2009
 FILE NUMBER 41-C1



This and all other project documents and all ideas, aesthetic or design concepts herein are intended to be used as project documents on the registered property of LPA, LLC. LPA, LLC and cannot be used, copied, or reproduced in any form or by any means without the prior written consent of LPA, LLC. LPA, LLC hereby grants limited authority to the registered architect, engineer, interior designer or landscape architect to use the project documents for the project only and not for any other project. LPA, LLC and its consultants shall not be held responsible for any errors or omissions in the project documents. LPA, LLC and its consultants shall not be held responsible for any errors or omissions in the project documents. LPA, LLC and its consultants shall not be held responsible for any errors or omissions in the project documents. LPA, LLC and its consultants shall not be held responsible for any errors or omissions in the project documents.

College of San Mateo
 Building 10N
 San Mateo, CA
 Developed for
 San Mateo County Community College District

Revision	Description	Date
000000	100% Design Development	06/02/08
000001	90% Construction Documents	07/20/08
000002	80% Construction Documents	08/11/08
000003	70% Construction Documents	09/11/08
000004	60% Construction Documents	10/11/08
000005	50% Construction Documents	11/11/08
000006	40% Construction Documents	12/11/08
000007	30% Construction Documents	01/11/09
000008	20% Construction Documents	02/11/09
000009	10% Construction Documents	03/11/09

Job No.	27082.20
Date	March 2009
Drawn by	
Checked by	
Scale	1/8" = 1'-0"
FIRST FLOOR FURNITURE & EQUIPMENT PLAN (S)	
A28.2	