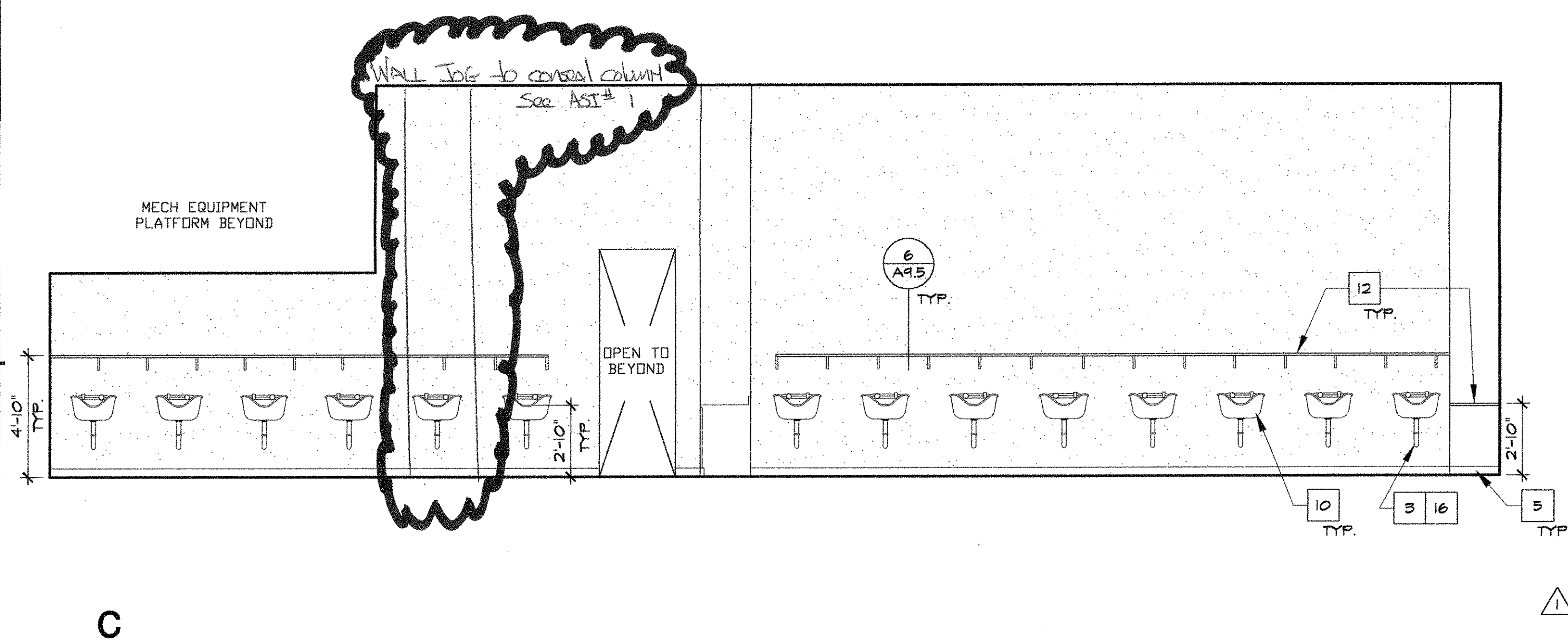


A

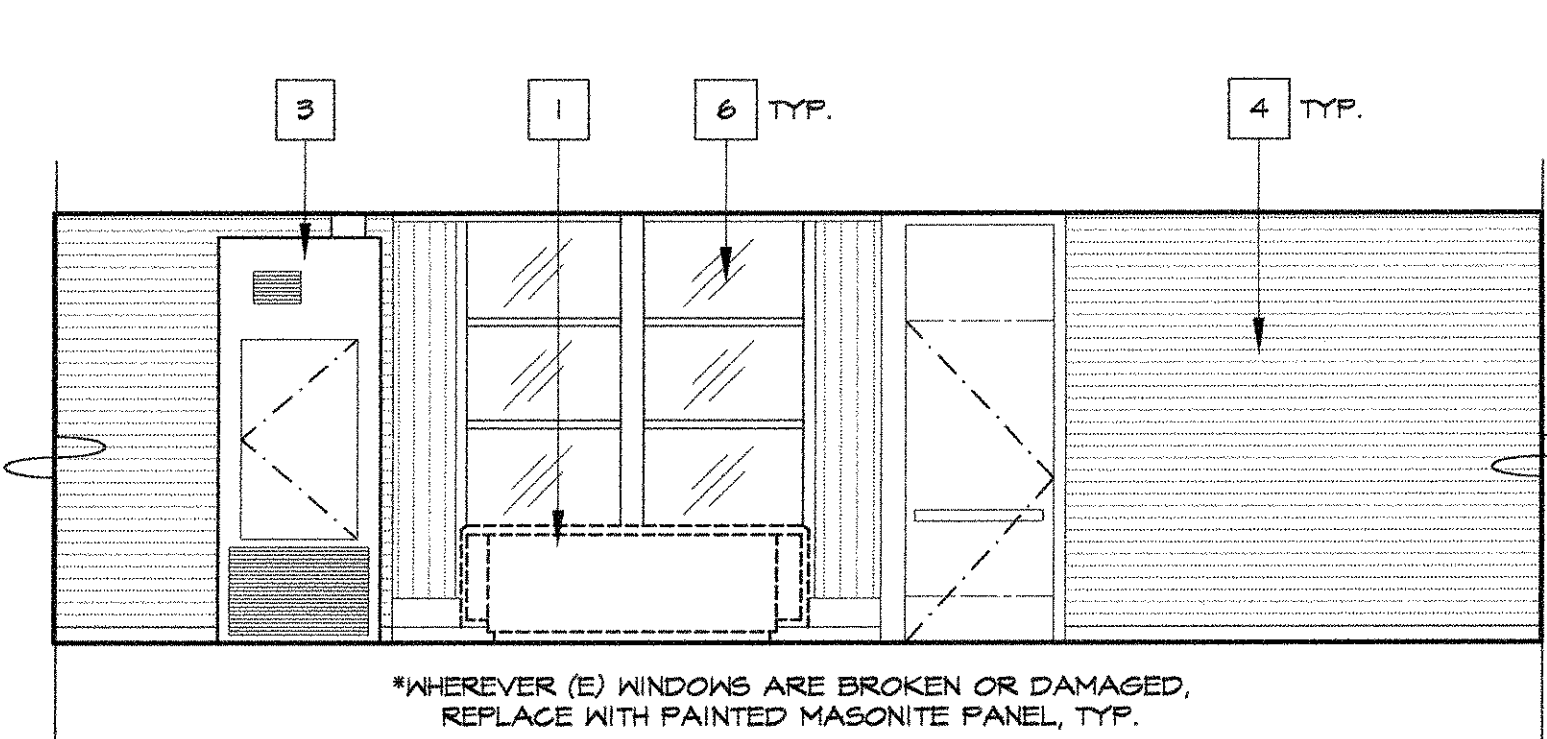
1 INTERIOR ELEVATION - RM 123

1

1/4" = 1'-0"

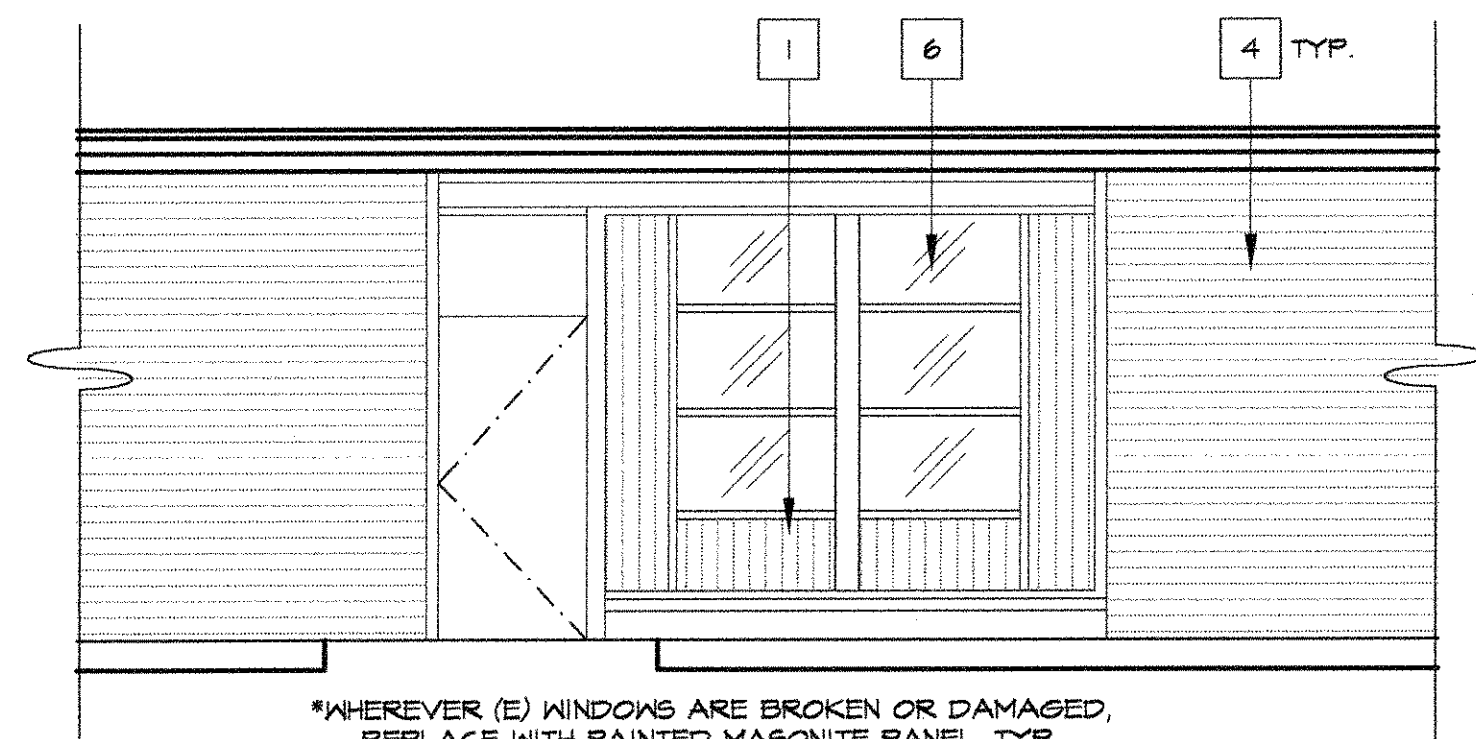


C



2 TYPICAL INTERIOR ELEVATION NORTH WALL 1/4" = 1'-0"

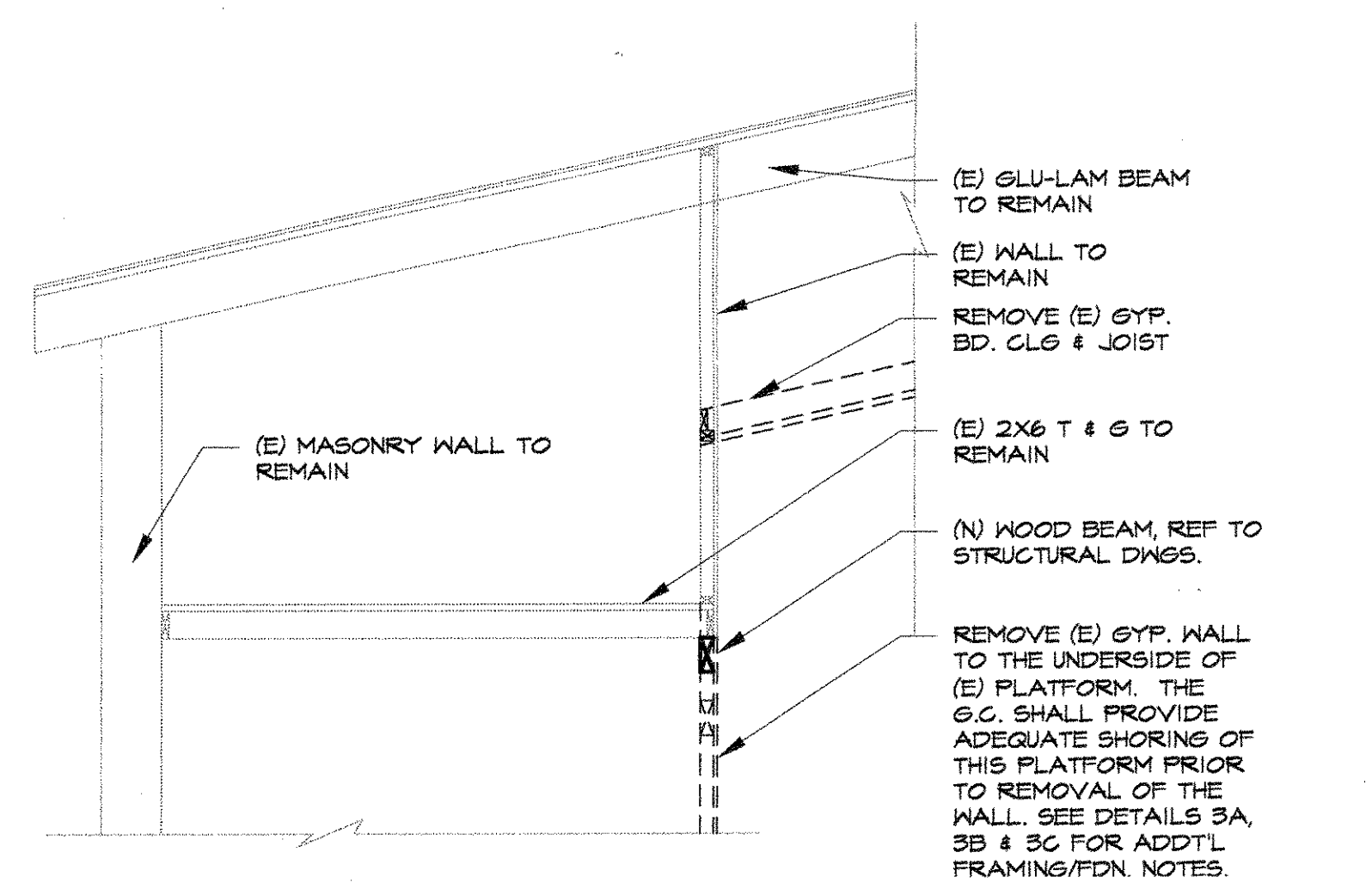
2



3 TYPICAL EXTERIOR ELEVATION 1/4" = 1'-0"

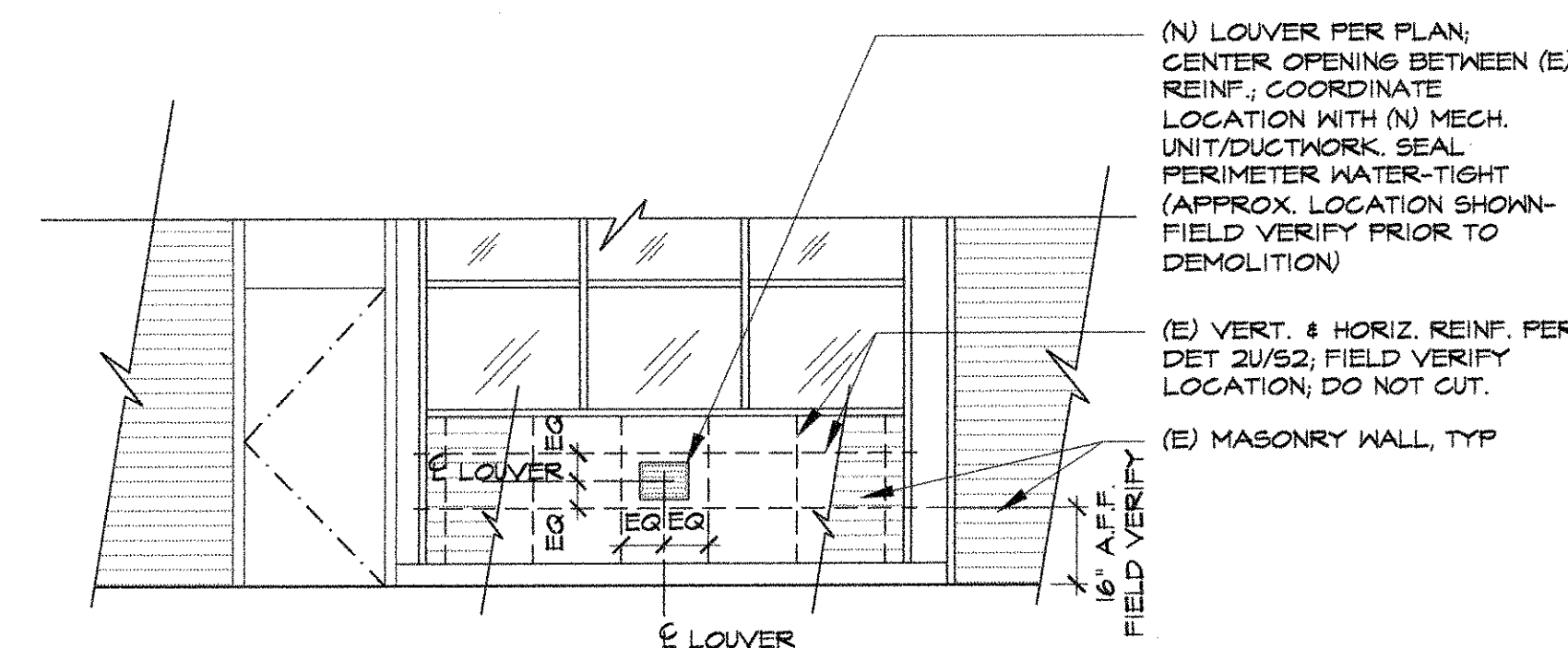
3

See EPI #11 (E) DR FOR WOOD WINDOW LOCATIONS ARE N/C



4 SECTION THRU MECH EQUIPMENT PLATFORM 1/2" = 1'-0"

4

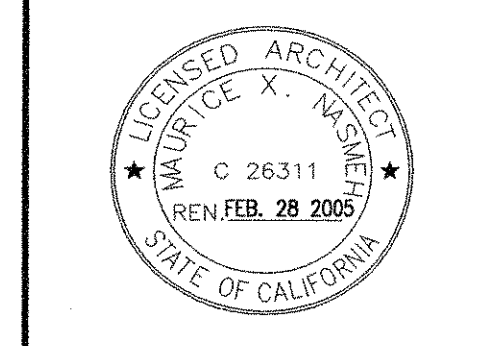


5 EXTERIOR ELEV @ (N) LOUVER OPG. SEE ALSO 2U/S2 1/2" = 1'-0"

5

KEYED NOTES (DENOTED BY [Symbol])

1. CLOSE OPENING WHERE (E) HVAC UNIT WAS REMOVED. USE MASONITE TO PATCH OPENING & PAINT TO MATCH. SEE 8/A9.1
2. (N) FIRE EXTINGUISHER CABINET. REF TO 15/A9.1
3. ACCESSIBLE STATION
4. (E) BRICK TO REMAIN, TYP.
5. 4" HIGH TOPSET BASE
6. INSTALL (N) MASONITE PANELS, PAINT WHERE (E) FLEXIGLASS IS MISSING/DAMAGED. ADD ALTERNATE #1. INSTALL METAL PANEL PAINT. SEE 4/A9.1
7. PAINTED TEXTURED GYP. BD. WALL
8. 3070 S.C. WOOD DOOR W/ METAL JAMBS.
9. (N) ROOM IDENTIFICATION SIGNAGE. REF TO 14/A9.4
10. (N) ADJUSTABLE HAIR WASHING SINKS.
11. ALL LOCKABLE DOORS
12. (N) WOOD SHELF, REF TO 6/A9.5
13. TWO ADJUSTABLE SHELF W/ LOCKS ON ALL DOORS.
14. ACCESSIBLE SINK. SEE MECH DWG FOR ADDITIONAL INFO.
15. UNISTRUT GRID SYSTEM. SEE STRUCTURAL DWG FOR MORE INFO.
16. (N) INSULATION ON HOT WATER SUPPLY & WASTE LINES PER CBC
17. (E) FURNACE CABINET TO REMAIN. SEE MECH. DWGS FOR ADDTL. NOTES ON (N) & (E) EQUIP.



IDENTIFICATION STAMP  
 OFFICE OF REGULATION SERVICES  
 DIV. OF THE STATE ARCHITECT  
 REG. NO. 26311  
 DATE: FEB 28 2005  
 ARCHITECT: SUGIMURA & ASSOCIATES  
 PROJECT: SKYLINE COLLEGE SWING SPACE

INTERIOR & EXTERIOR ELEVATIONS  
 SKYLINE COLLEGE SWING SPACE  
 PERMIT PACKAGE #3  
 SKYLINE COLLEGE  
 3300 COLLEGE DRIVE  
 SAN BRUNO, CA 94066

NO.	ITEM	DATE
1	DSA BACKCHECK	3/26/04
2	CONSTRUCTION ISSUE	6/10/04
3	ADDENDUM #5	7/21/04
4	CONFORM SET	9/9/04
5	As-Built	3/14/05

CLIENT APPROVAL:  
 DRAWN BY: KH  
 CHECKED BY:  
 JOB NO: 2145.002 DATE: 13 FEB 2004