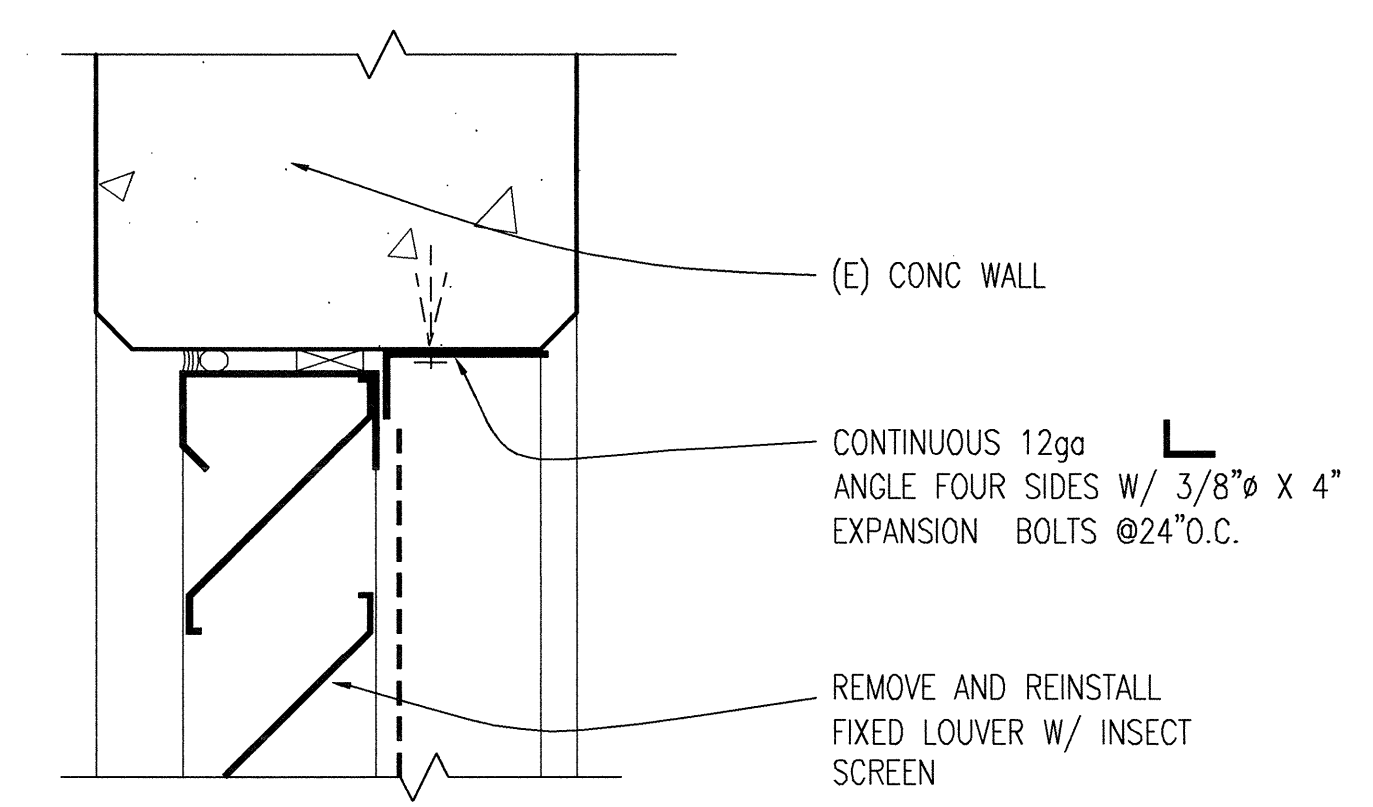
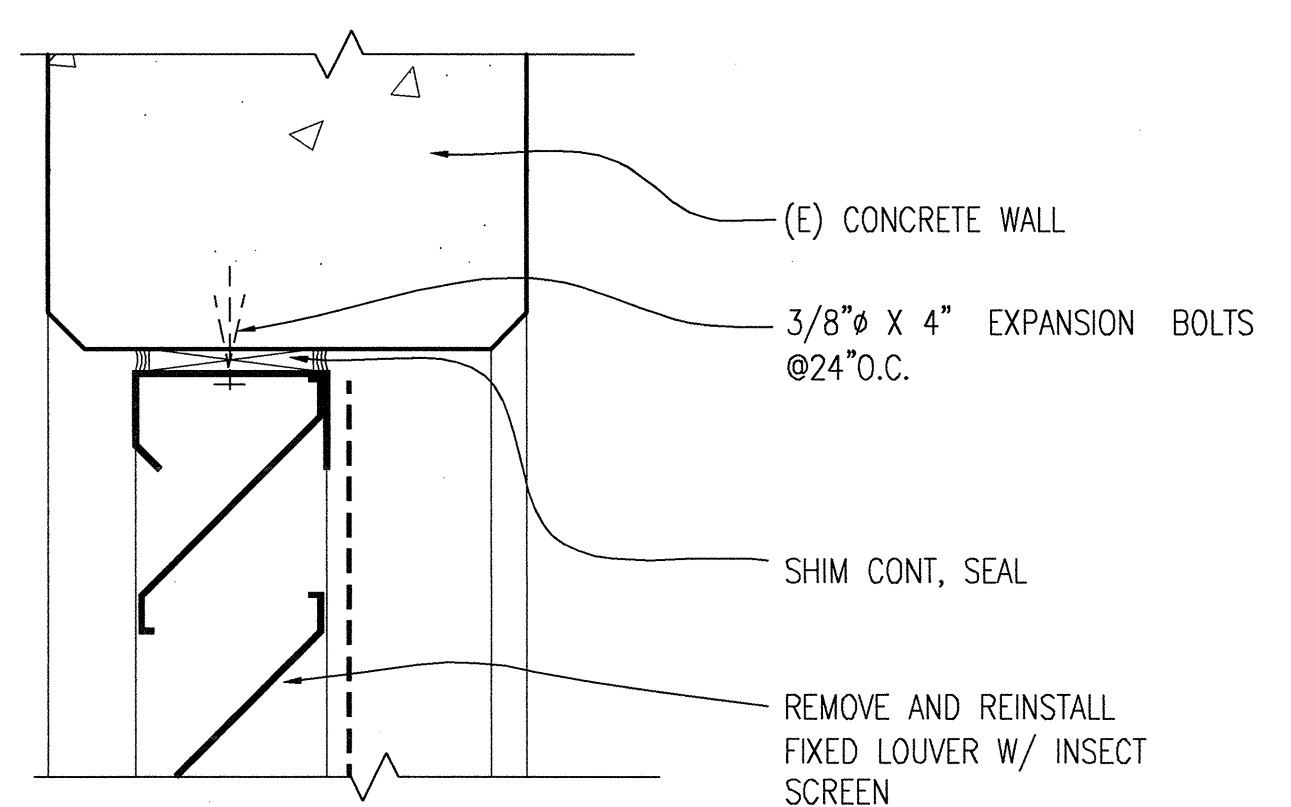


1 BLDG 13 - PARTIAL FIRST FLOOR PLAN DSA APPL # 27796 1/4" = 1'-0"

LOUVER NOTES: WHERE EXISTING LOUVERS ARE INDICATED TO BE REMOVED AND REINSTALLED USE DETAILS WHICH BEST MATCH EXISTING CONDITIONS.

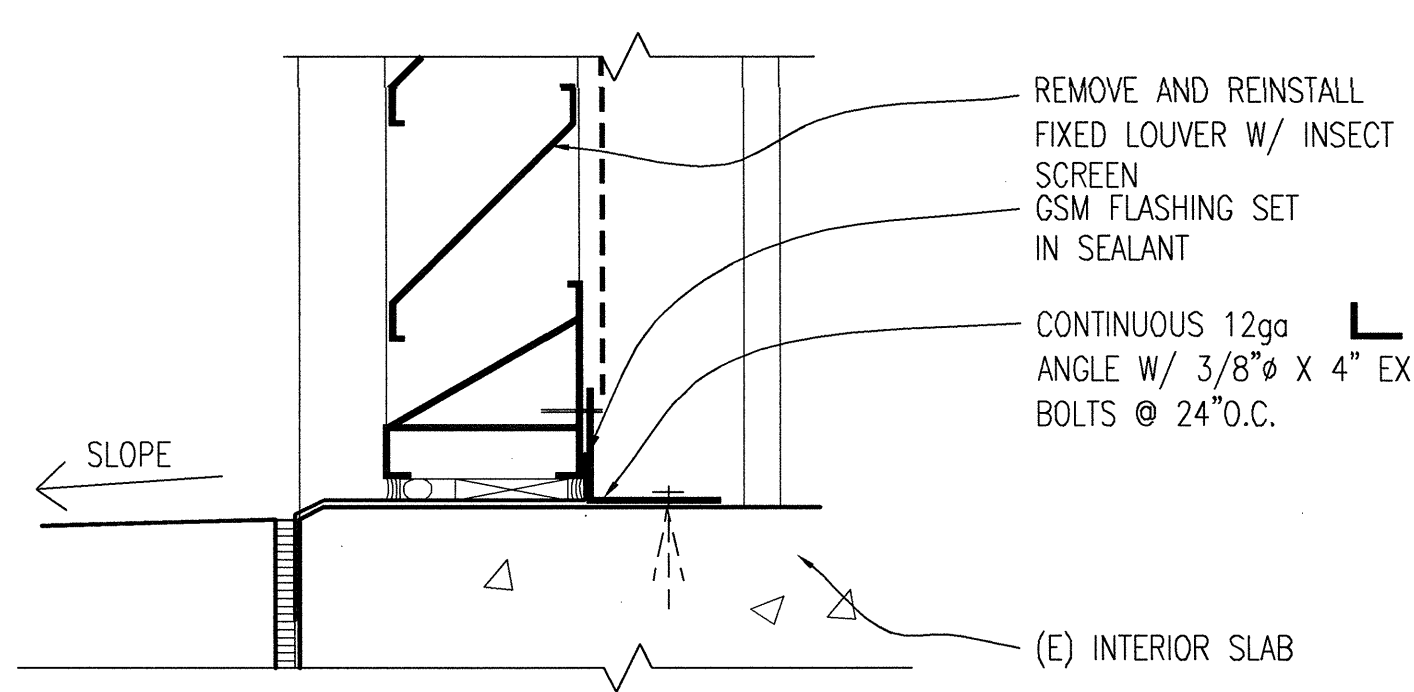


11 EXTERIOR WALL LOUVER HEAD (JAMB SIMILAR) REMOVABLE 3'-1'-0" A2.41

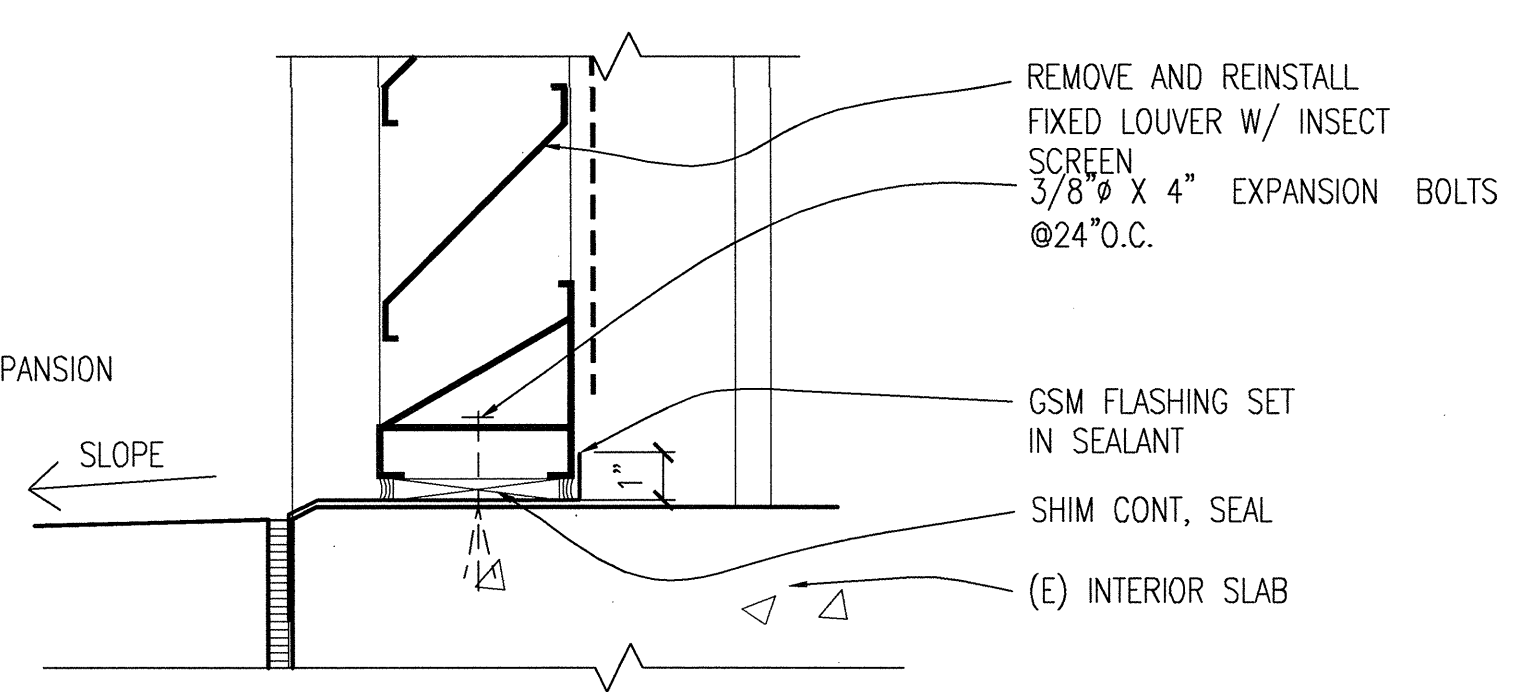


7 EXTERIOR WALL LOUVER HEAD (JAMB SIMILAR) FIXED 3'-1'-0" A2.41

LOUVER NOTES: WHERE EXISTING LOUVERS ARE INDICATED TO BE REMOVED AND REINSTALLED USE DETAILS WHICH BEST MATCH EXISTING CONDITIONS.



12 EXTERIOR WALL LOUVER SILL REMOVABLE 3'-1'-0" A2.41



8 EXTERIOR WALL LOUVER SILL FIXED 3'-1'-0" A2.41

IDENTIFICATION STAMP  
DIVISION OF THE STATE ARCHITECT

APPLICATION NUMBER 01-123618  
AC DS FILE 123618  
DATE 2/9/11

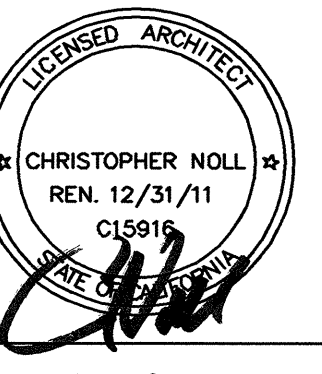
CALIFORNIA STATE FIRE MARSHAL  
APPROVED

APPROVAL OF THIS PLAN DOES NOT AUTHORIZE OR APPROVE ANY  
DESIGN OR DEVIATION FROM APPLICABLE REGULATIONS. FINAL  
APPROVAL IS SUBJECT TO FIELD INSPECTION. ONE SET OF APPROVED  
PLANS SHALL BE AVAILABLE ON THE PROJECT SITE AT ALL TIMES.  
REVIEWED BY: DATE:

CAÑADA COLLEGE

Electrical Infrastructure Replacement Project

4200 Farm Hill Blvd  
Redwood City, CA 94061

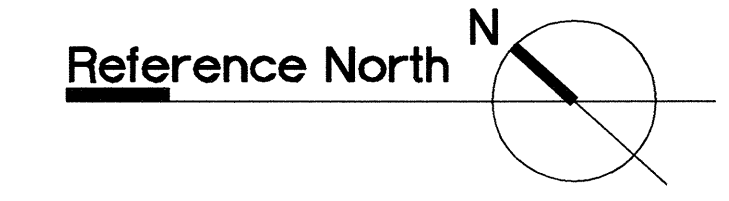


BID SET

SHEET TITLE  
Bldg 13-Plan

REVISIONS		
NO.	DATE	DESCRIPTION

DATE January 14, 2011  
DRAWN TC/AL  
CHECKED MM  
SCALE 1/4" = 1'-0"  
JOB NO. 2921.01



SEE A0.01 FOR KEY PLAN

SHEET NUMBER  
A2.41