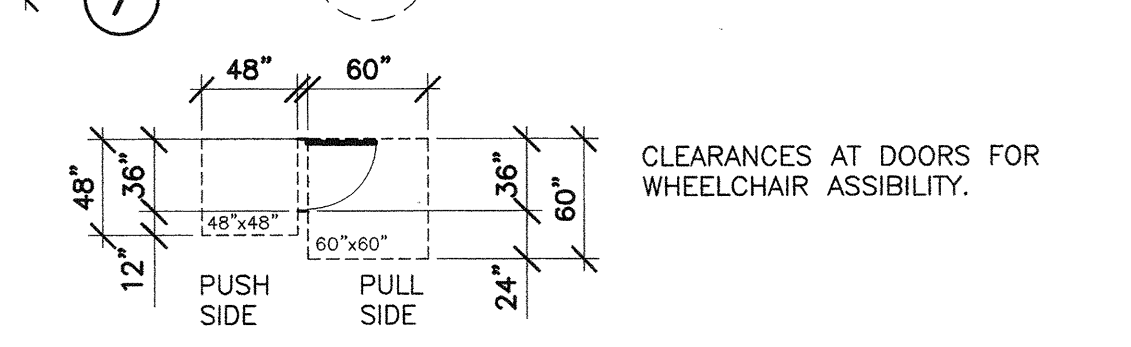


Numbered Notes: THIS SHEET ONLY

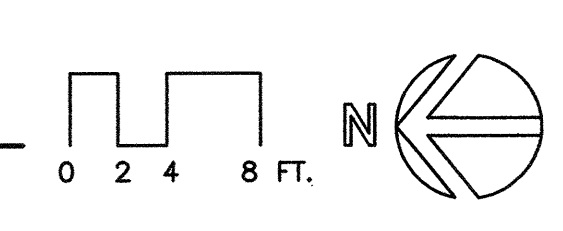
- 1 ---
- 2 ---
- 3 ---
- 4 ---
- 5 ---
- 6 ---
- 7 (N) OPERABLE WALL SYSTEM.
- 8 (N) CASEWORK BASE UNIT.
- 9 (N) CASEWORK WALL UNITS.
- 10 (N) CASEWORK SHELF UNITS.
- 11 ---
- 12 ---
- 13 ---
- 14 ---
- 15 (E) ELEC. PANEL.
- 16 (E) F.H. CABINET.
- 17 ---
- 18 ---
- 19 FACE OF (E) SERVICE DOCK.

Legend: THIS SHEET ONLY

- (N) COMPUTER W/ MONITOR & KEYBOARD.
- (N) ERGONOMIC CHAIR.
- (N) CONFERENCE CHAIR.
- (N) GUEST CHAIR.
- (N) VERTICAL FILE CABINET.
- (N) PRINTER.
- (N) OVERHEAD PROJECTOR.
- (N) BOOKCASE.
- (N) WHEELCHAIR ACCESSIBLE WORK STATION 30"x48" CLR. SPACE SHOWN.
- 60"ø CLEAR WHEELCHAIR TURNING SPACE.



1 FURNITURE PLAN
SCALE: 1/8"=1'-0"



KRUGER BENSEN ZIEMER ARCHITECTS, INC.
30 W. ARRELLAGA, SANTA BARBARA, CA 93101
805/963.1726

STEVE DOWTY, A.I.A.
PRINCIPAL IN CHARGE

GERALD SHUSTA
PROJECT ARCHITECT

All ideas, design arrangements and plans indicated or represented by this drawing are owned by and are the property of Kruger-Bensen-Ziemer, Inc. and shall not be copied, reduced and developed for use on, and in connection with, the specified project. None of such ideas, design, arrangements or plans shall be used by or disclosed to any person, firm or corporation for any purpose whatsoever without the written permission of Kruger-Bensen-Ziemer.

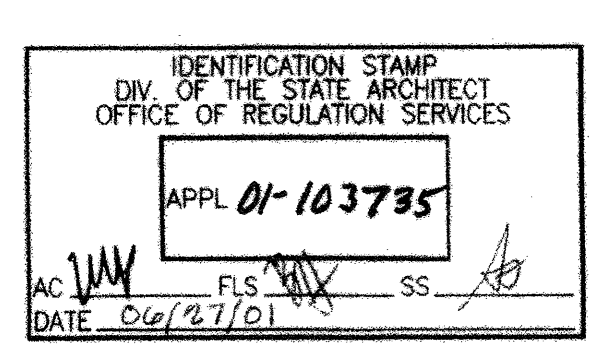
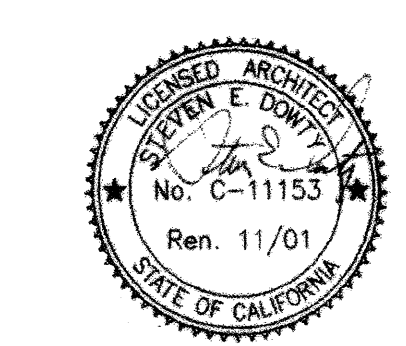
**CENTER FOR ADVANCED LEARNING TECHNOLOGY
SKYLINE COLLEGE**

SAN MATEO COUNTY COMMUNITY COLLEGE DISTRICT
3300 COLLEGE DRIVE
SAN BRUNO, CALIFORNIA 94066

REVISIONS

| NO. | DESCRIPTION | DATE | BY |
|-----|-------------|------|----|
| | | | |
| | | | |

| | |
|--------------|----------------|
| DRAWN | G.S. |
| CHECKED | S.D. |
| DATE | 3/21/01 |
| JOB NO. | 98-03 |
| SHEET TITLE | FURNITURE PLAN |
| SHEET NO. | 8 |
| A 2.3 | |
| OF 21 | |



J:\Cadd\proj\9803\9803ae_3.dwg F1: 04.16.15.12.29.2001