

KRUGER BENSEN ZIEMER ARCHITECTS, INC.
 30 W. ARRELLAGA SANTA BARBARA, CA 93101
 805/963.1726

STEVE DOWTY, A.I.A.
 PRINCIPAL IN CHARGE

GERALD SHUSTA
 PROJECT ARCHITECT

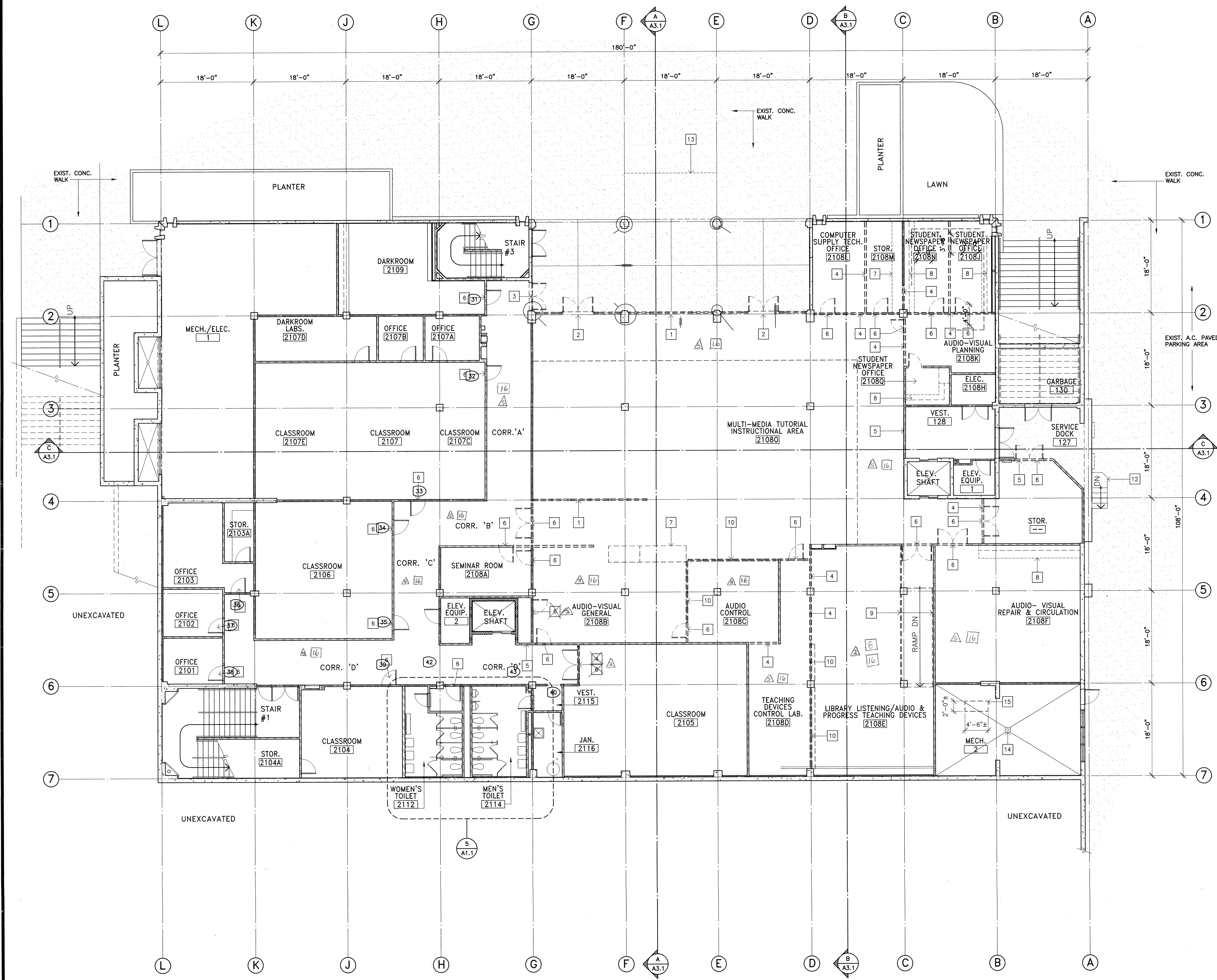
All data, design arrangements and plans indicated or represented by this drawing are deemed to be the property of Kruger-Bensen-Ziemer, Inc. Architects, and are created, revised and developed for use on, and in connection with, the specific project. None of such design, arrangements or plans shall be used by or disclosed to any person, firm or corporation for any purpose whatsoever without the written permission of Kruger-Bensen-Ziemer.

Numbered Notes: THIS SHEET ONLY

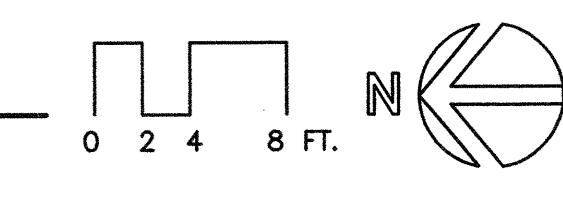
- 1 REMOVE (E) ALUM. / GLASS STOREFRONT SYSTEM & (E) 6" HIGH CONC. CURB
- 2 REMOVE (E) ALUM. / GLASS STOREFRONT SYSTEM W/ ALUM. / GLASS DOOR & (E) 6" HIGH CONC. CURB
- 3 REMOVE (E) METAL DOOR & FRAME
- 4 REMOVE (E) NON-LOAD BEARING METAL STUD & GYP. BD. PARTITION
- 5 REMOVE PORTION OF (E) NON-LOAD BEARING METAL STUD & GYP. BD. PARTITION FOR INSTALLATION OF (N) FRAME & DOOR
- 6 REMOVE (E) FRAME & DOOR
- 7 REMOVE (E) BASE CABINET
- 8 REMOVE (E) BASE CABINET & WALL CABINET
- 9 REMOVE (E) METAL HANDRAILS @ (E) CONC. RAMP.
- 10 REMOVE (E) METAL FRAMED WINDOWS & METAL STUD / GYP. BD. PONY WALL
- 11 NOT USED
- 12 (E) CONC. & STEEL FRAMED STAIRS.
- 13 SAWCUT & REMOVE (E) CONC. WALK @ LOCATION OF (N) DOOR LANDING
- 14 REMOVE (E) FLOOR DRAIN
- 15 SAWCUT (E) CONC. FLOOR SLAB FOR INSALLATION ON (N) FLOOR DRAIN SEE MECH.
- 16 REMOVE (E) SUSPENDED CLG. TILES, GRID & REGISTERS IN THIS ROOM
- 17 SAWCUT & REMOVE (E) CONC. WALK @ LOCATION OF (N) DOOR LANDING
- 18 REMOVE (E) BASE CABINETS, WALL CABINETS + SINK (RM 2108 G)

Legend: THIS SHEET ONLY

- (E) REINF. CONC. WALL OR COL. TO REMAIN.
- (E) 4" METAL STUD W/ GYP. BD. NON-BEARING PARTITION TO REMAIN.
- (E) 3" METAL STUD W/ GYP. BD. WALL FURRING TO REMAIN.
- (E) 2 HR. RATED 6" METAL STUD W/ GYP. BD. SHAFT WALL TO REMAIN.
- (E) 4" METAL STUD W/ GYP. BD. NON-BEARING PARTITION TO BE REMOVED.



1 Existing Floor Plan W/ Demolition
 SCALE : 1/8"=1'-0"



IDENTIFICATION STAMP
 DIV. OF THE STATE ARCHITECT
 OFFICE OF REGULATION SERVICES
 APPL. 01-103795
 DATE 06/21/01

CENTER FOR ADVANCED LEARNING TECHNOLOGY
SKYLINE COLLEGE
 SAN MATEO COUNTY COMMUNITY COLLEGE DISTRICT
 3300 COLLEGE DRIVE
 SAN BRUNO, CALIFORNIA 94066

NO.	DESCRIPTION	DATE	BY

DRAWN	G.S.
CHECKED	S.D.
DATE	3/21/01
JOB NO.	98-03
SHEET TITLE	FLOOR PLAN: EXISTING W/ DEMOLITION PLAN
SHEET 5	A 2.0
OF 21	

J:\User\Pro\19803\9803.dwg, Fri, Dec 26, 15:03:45 2001