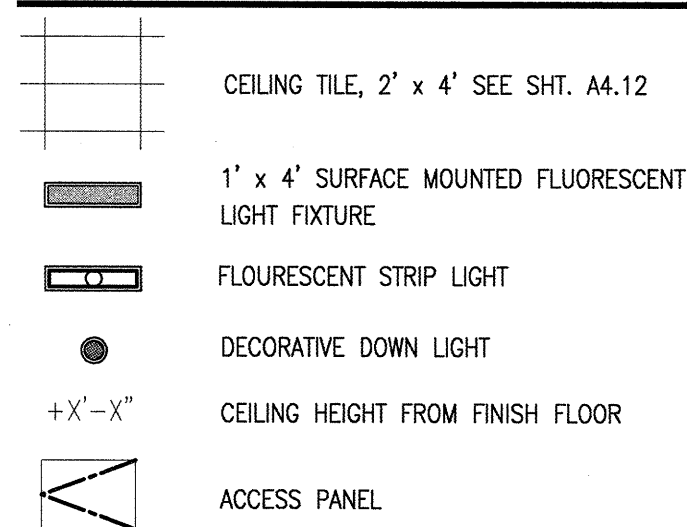
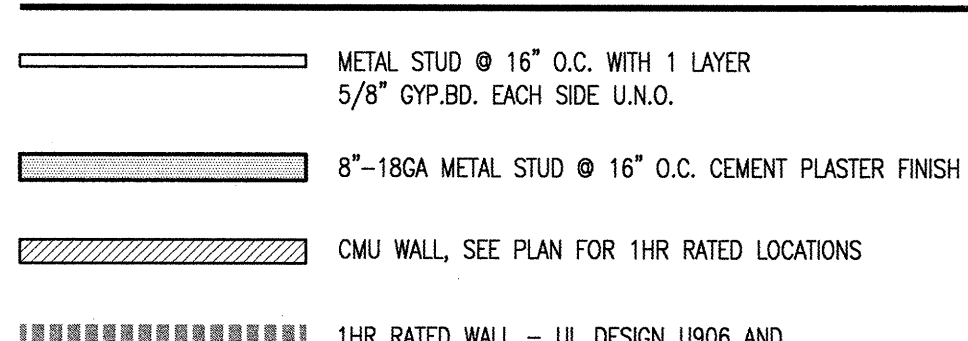


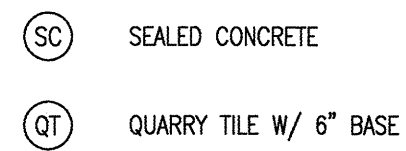
R.C.P. SYMBOL LEGEND



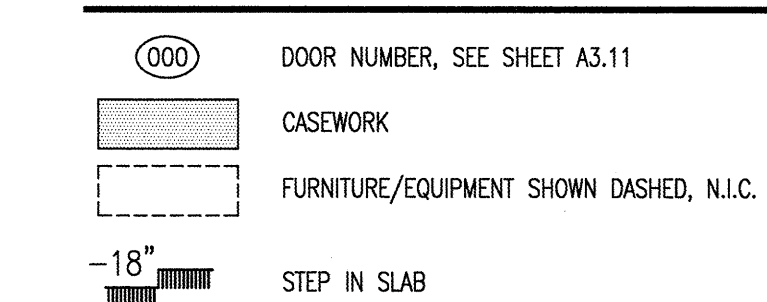
WALL TYPE LEGEND



FINISH LEGEND



SYMBOL LEGEND

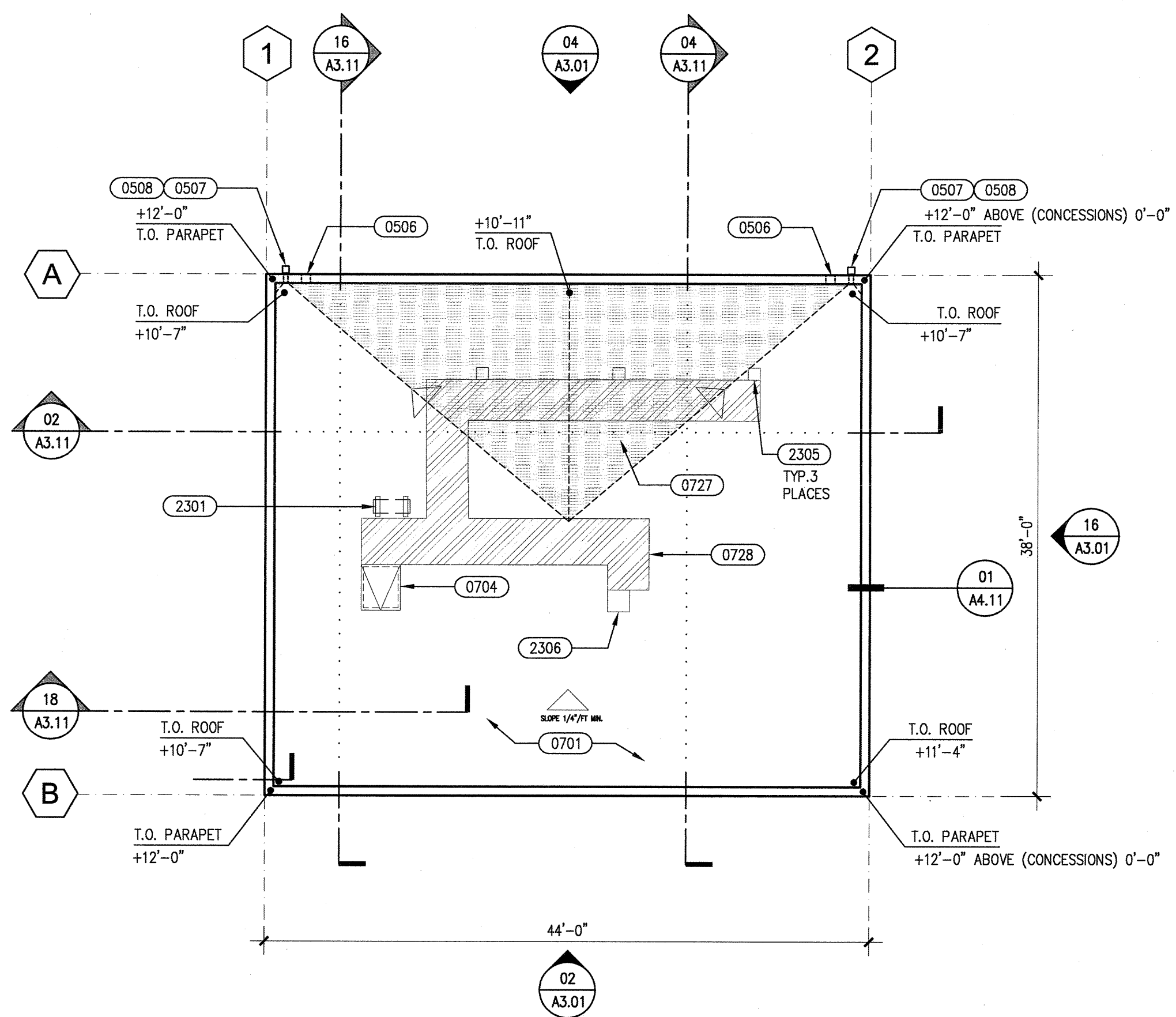


GENERAL NOTES

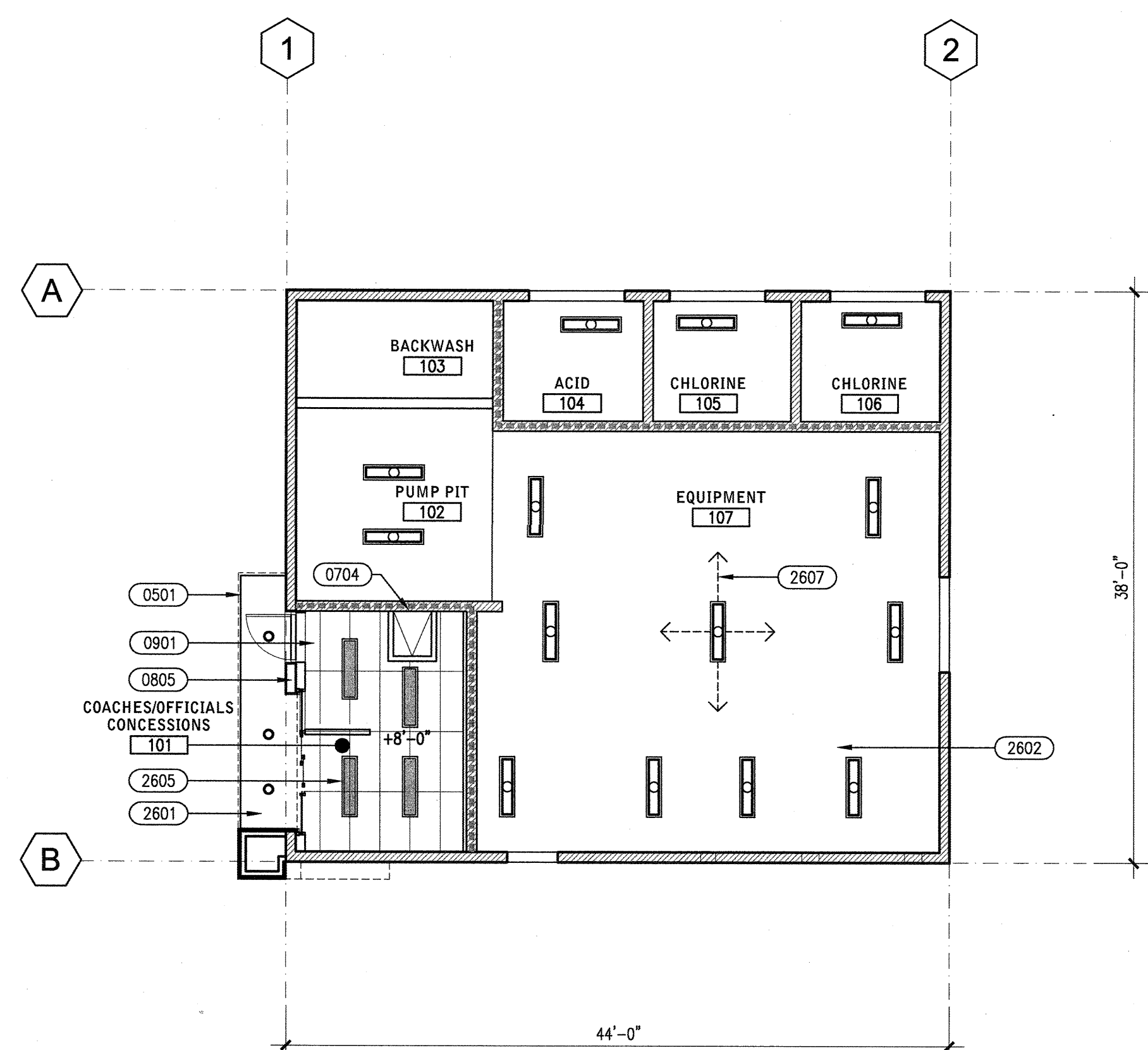
- ALL EXTERIOR WALLS 8\"/>

KEYNOTES

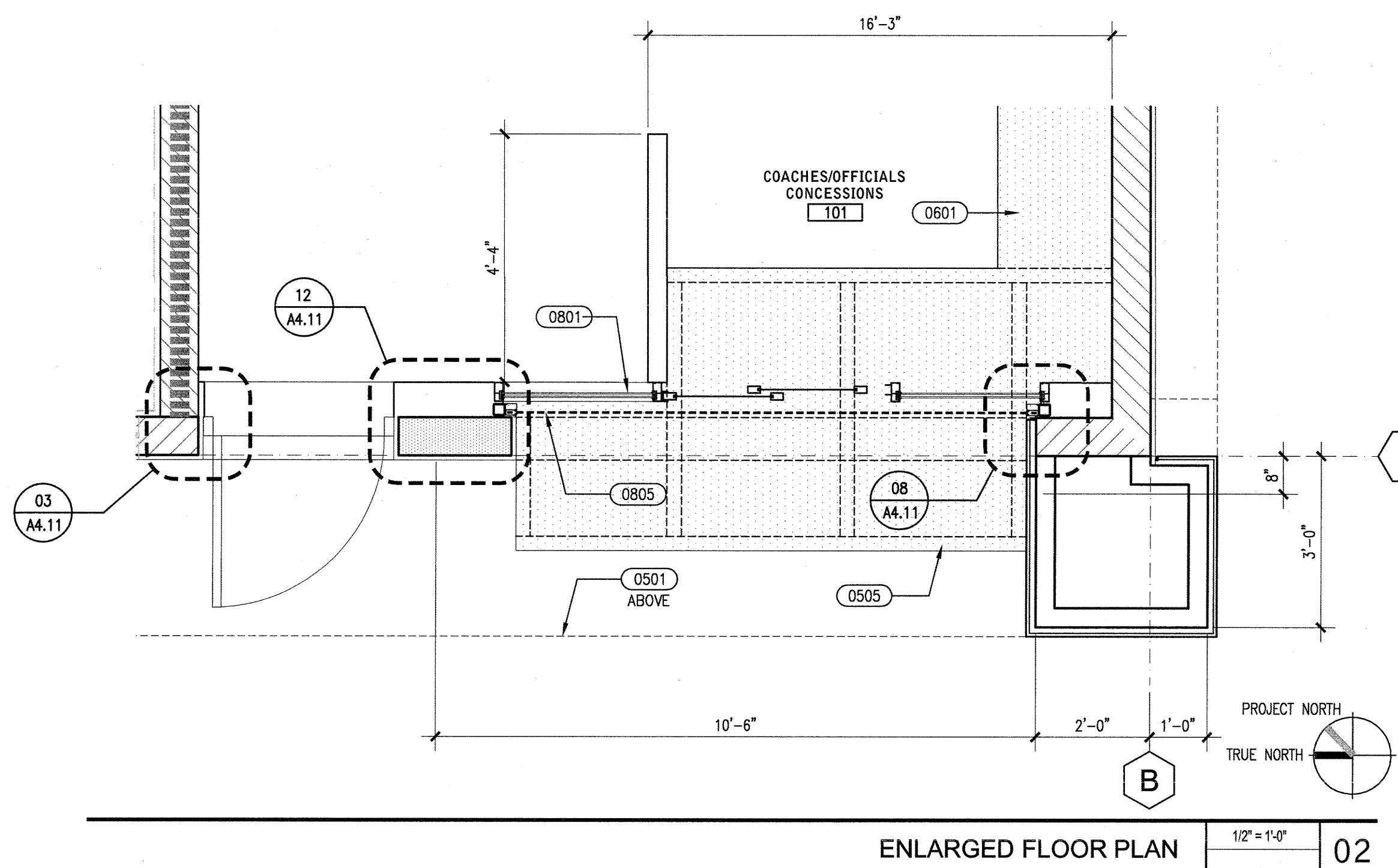
- 0401 - CMU WALL WITH CEMENT PLASTER FINISH
- 0402 - CMU RETAINING WALL WITH CEMENT PLASTER FINISH
- 0403 - CMU - SEALED, USE UL DESIGN U906 FOR REQUIRED 1HR OCCUPANCY SEPERATION
- 0501 - ALUMINUM CANOPY
- 0502 - PAINTED BRKE ALUMINUM PANELS ATTACH W/ SHEET METAL #10 @ 24\"/>



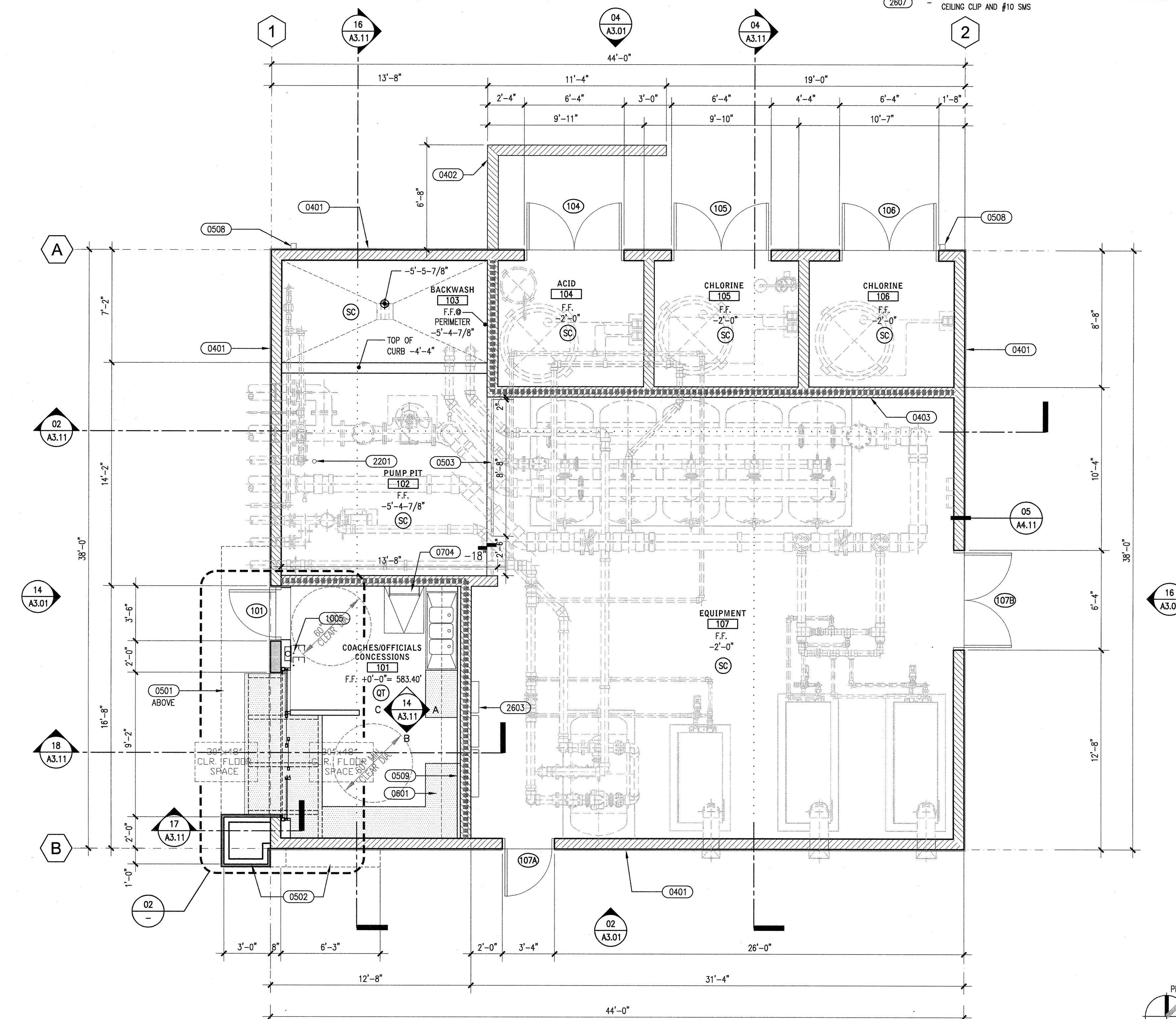
ROOF PLAN 1/8\"/>



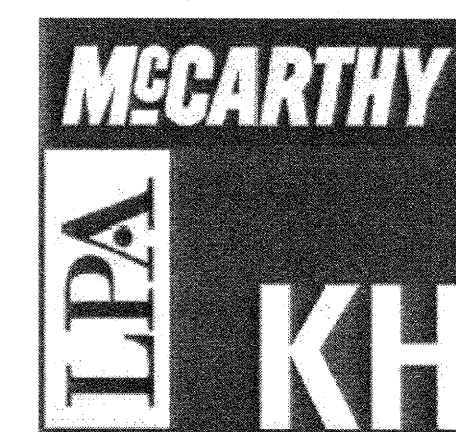
REFLECTED CEILING PLAN 1/8\"/>



ENLARGED FLOOR PLAN 1/2\"/>



FLOOR PLAN 1/4\"/>



McCarthy Building Companies, Inc.
343 Sansome Street, 14th Floor
San Francisco, California 94104
P 415 364-1339
F 415 397-5999



IDENTIFICATION STAMP
DIV. OF THE STATE ARCHITECT
OFFICE OF REGULATION SERVICE
APPL. #: 01-110097
DATE: APR 09 2009

This set of all project documents and all ideas, methods and designs incorporated herein are the property of LPA, Inc. (LPA) and cannot be copied, used, reproduced or part of any project or project model or included in the construction agreement between McCarthy and the State. LPA hereby grants permission for the state to reproduce and use the information contained herein for the state's records only. LPA and LPA's consultants make no representation concerning the accuracy of documents and are not responsible for any discrepancies between project documents and the existing conditions.

Copyright 2008

College of San Mateo
Site Package
San Mateo, CA
Developed for
San Mateo County Community College District

Date	Revision Description
13 SEPT 2008	DSA SUBMITTAL
02 APRIL 2009	DSA FINAL

Job No.	Date	Checked by	Scale
(FILED IN 27082.20) 27082.30	09 APRIL 2009	HE	AS SHOWN

FLOOR, ROOF, REFLECTED CEILING PLANS

A2.01