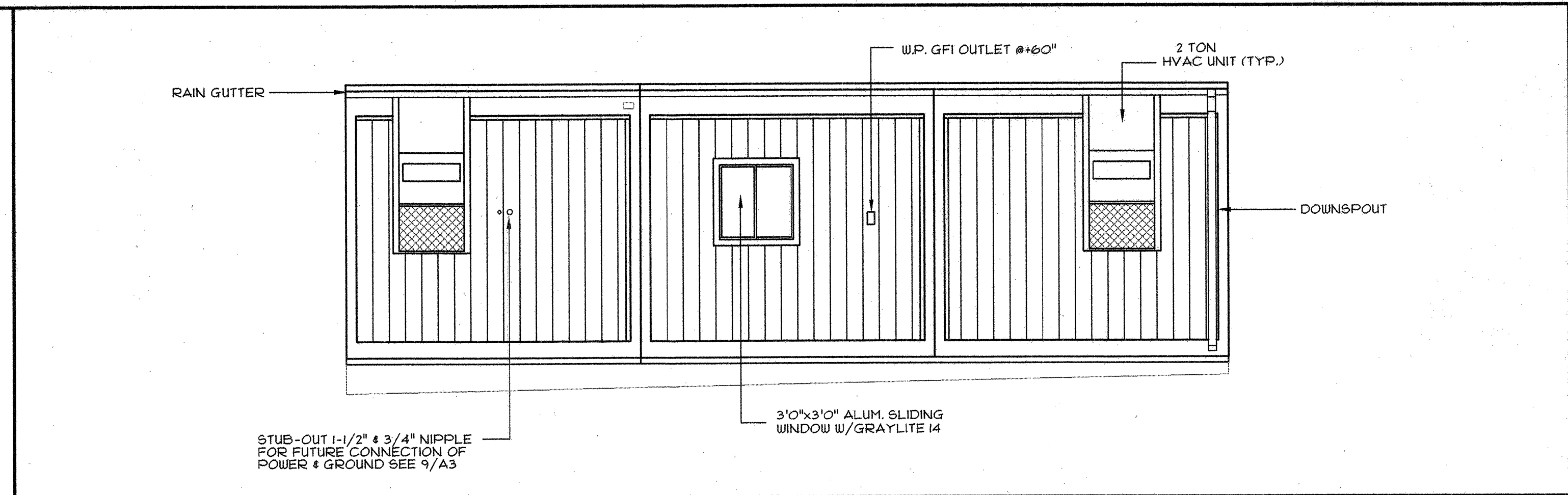
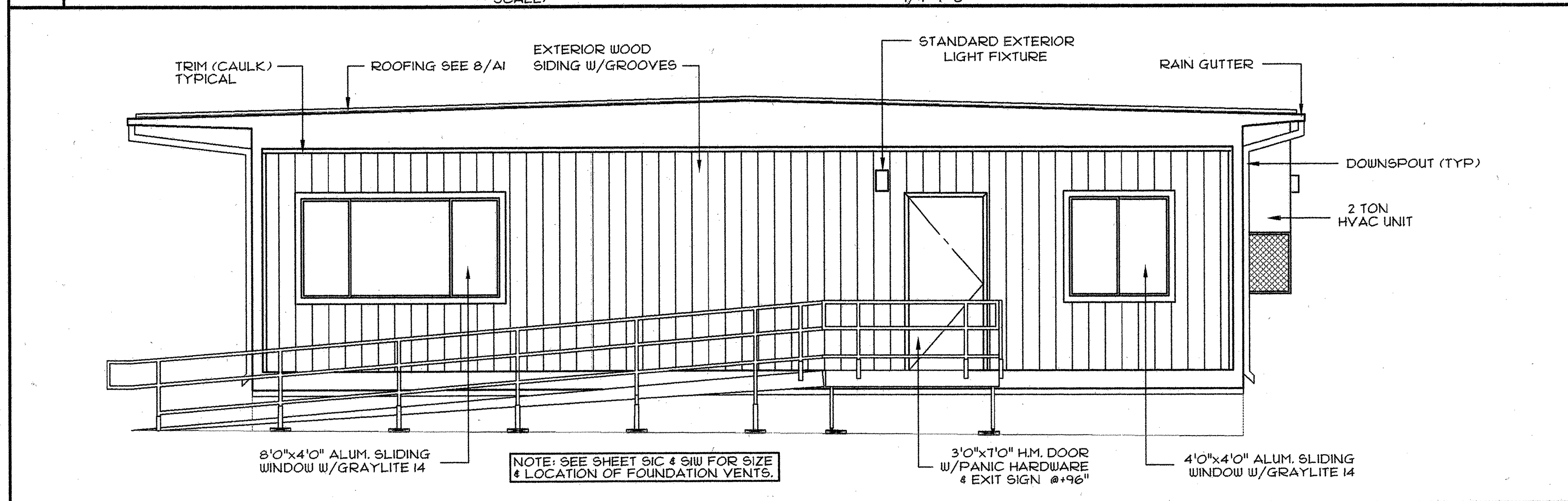


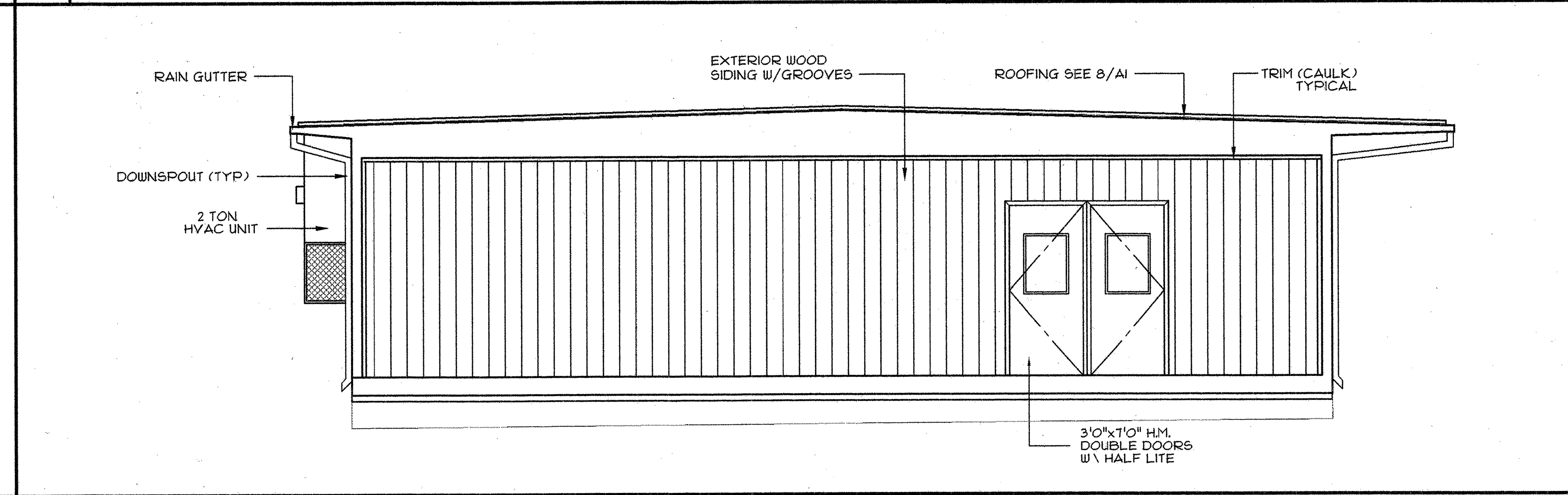
1 FRONT WALL EXTERIOR ELEVATION
SCALE: 1/4"=1'-0"



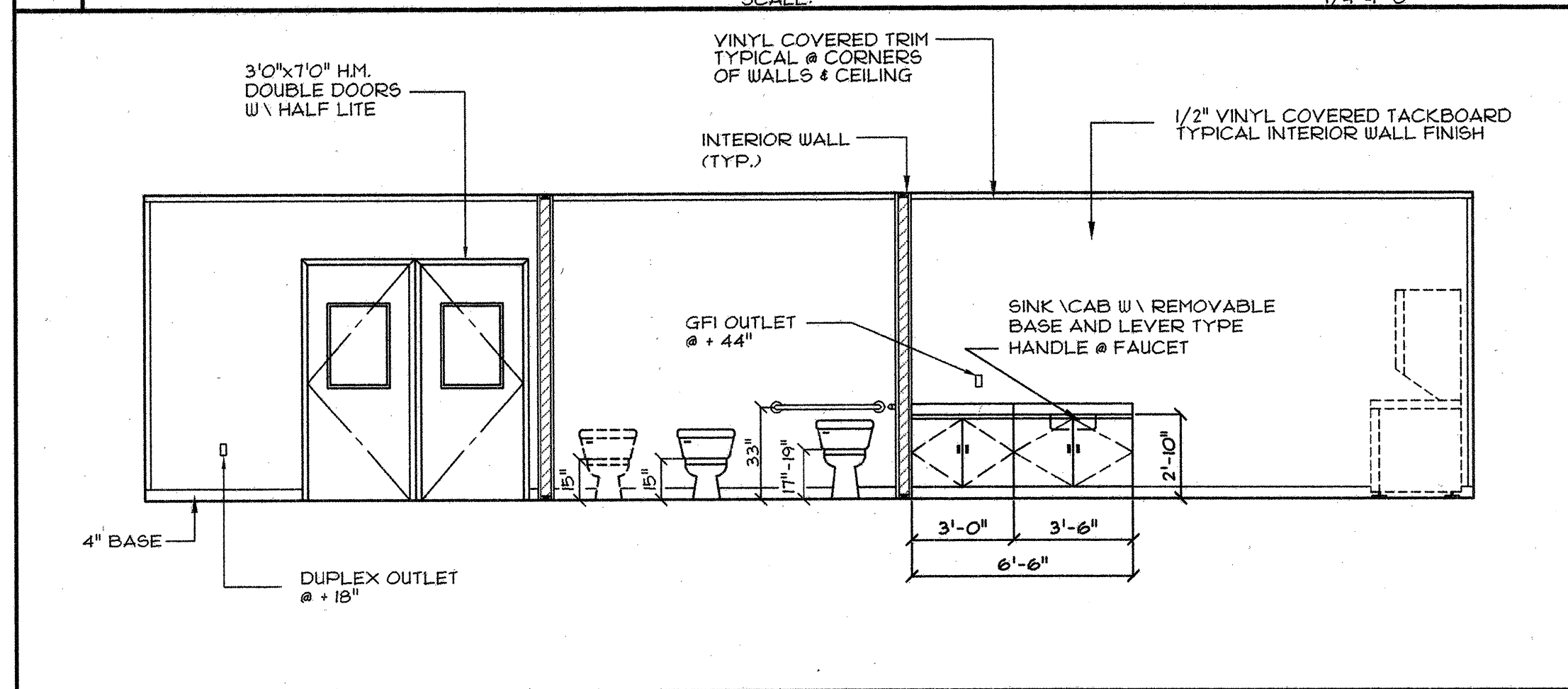
2 REAR WALL EXTERIOR ELEVATION
SCALE: 1/4"=1'-0"



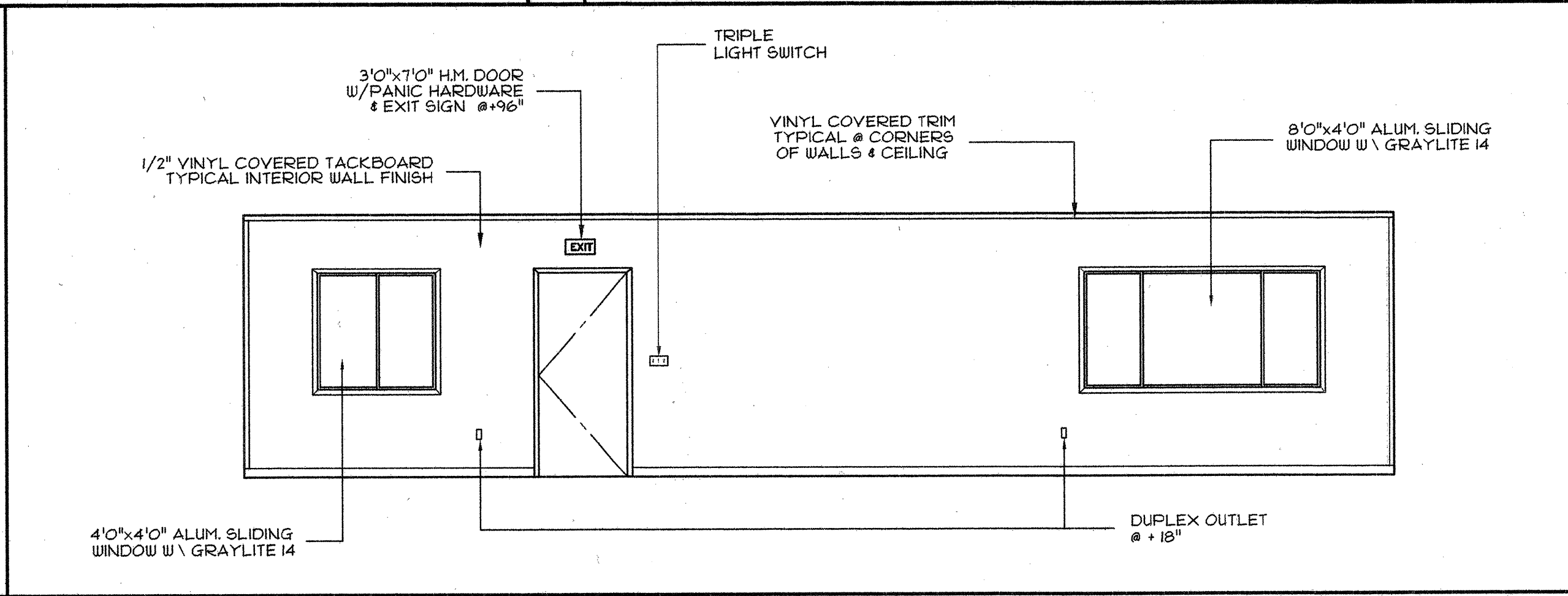
3 RIGHT WALL EXTERIOR ELEVATION
SCALE: 1/4"=1'-0"



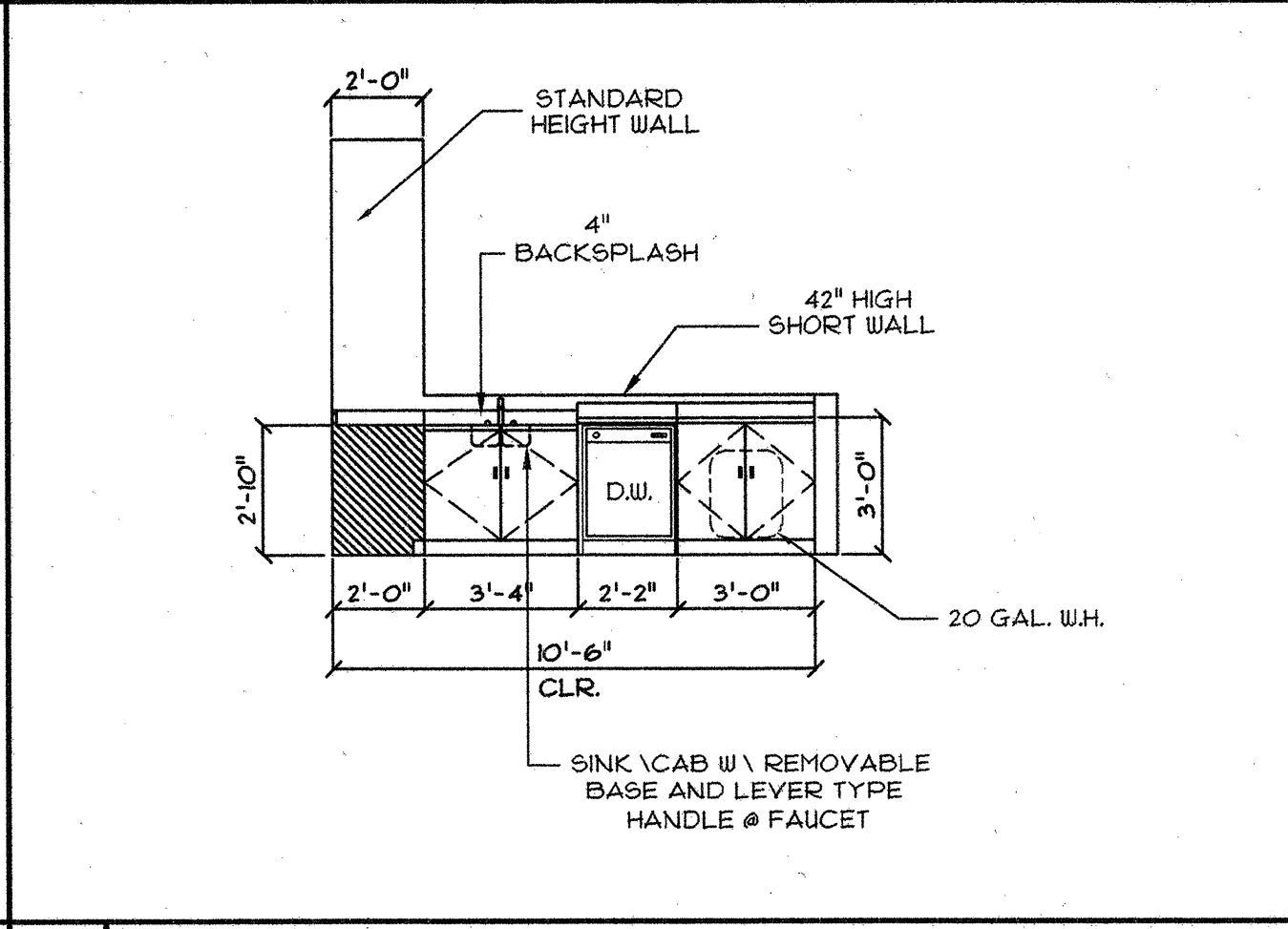
4 LEFT WALL EXTERIOR ELEVATION
SCALE: 1/4"=1'-0"



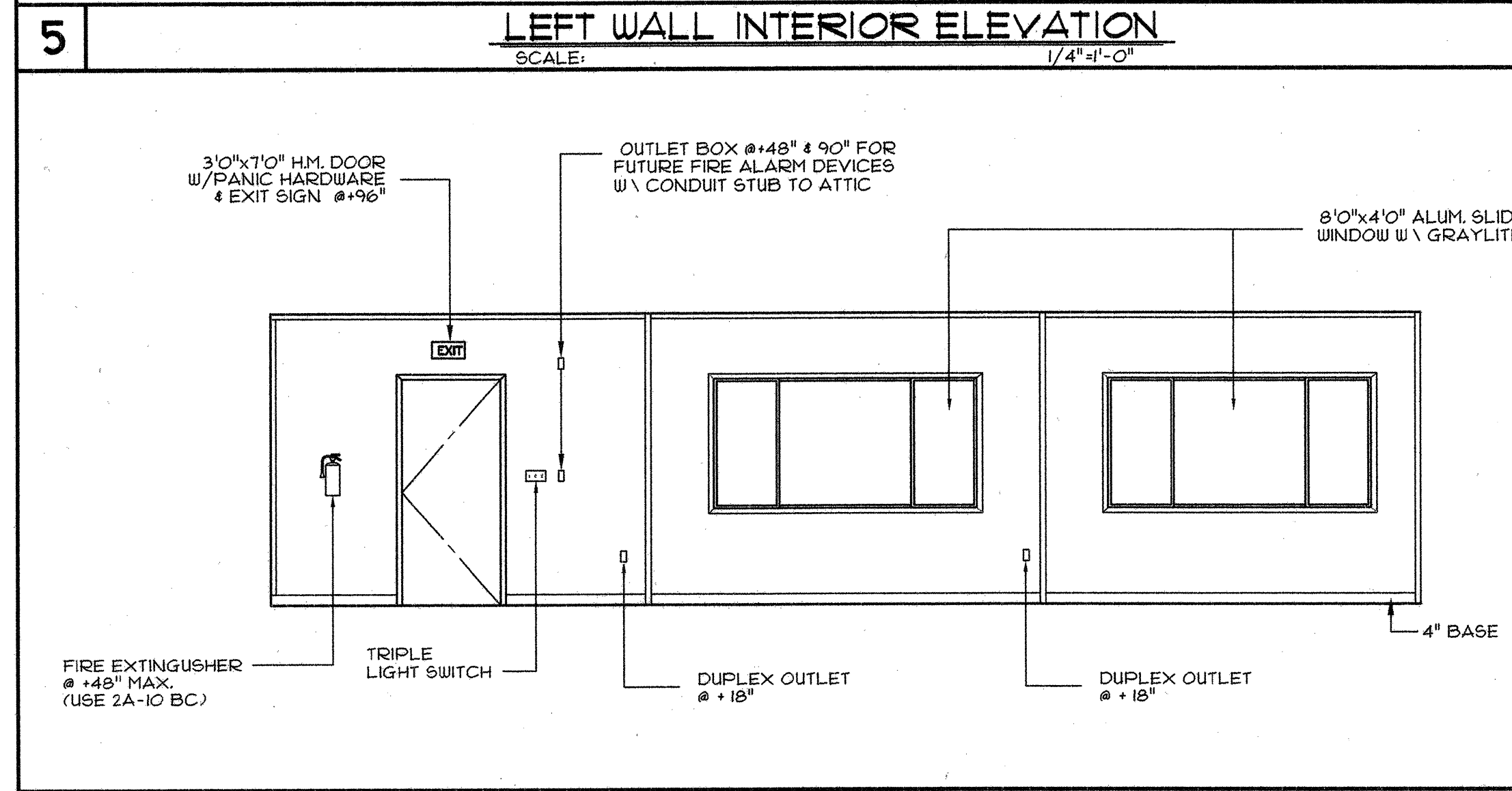
5 LEFT WALL INTERIOR ELEVATION
SCALE: 1/4"=1'-0"



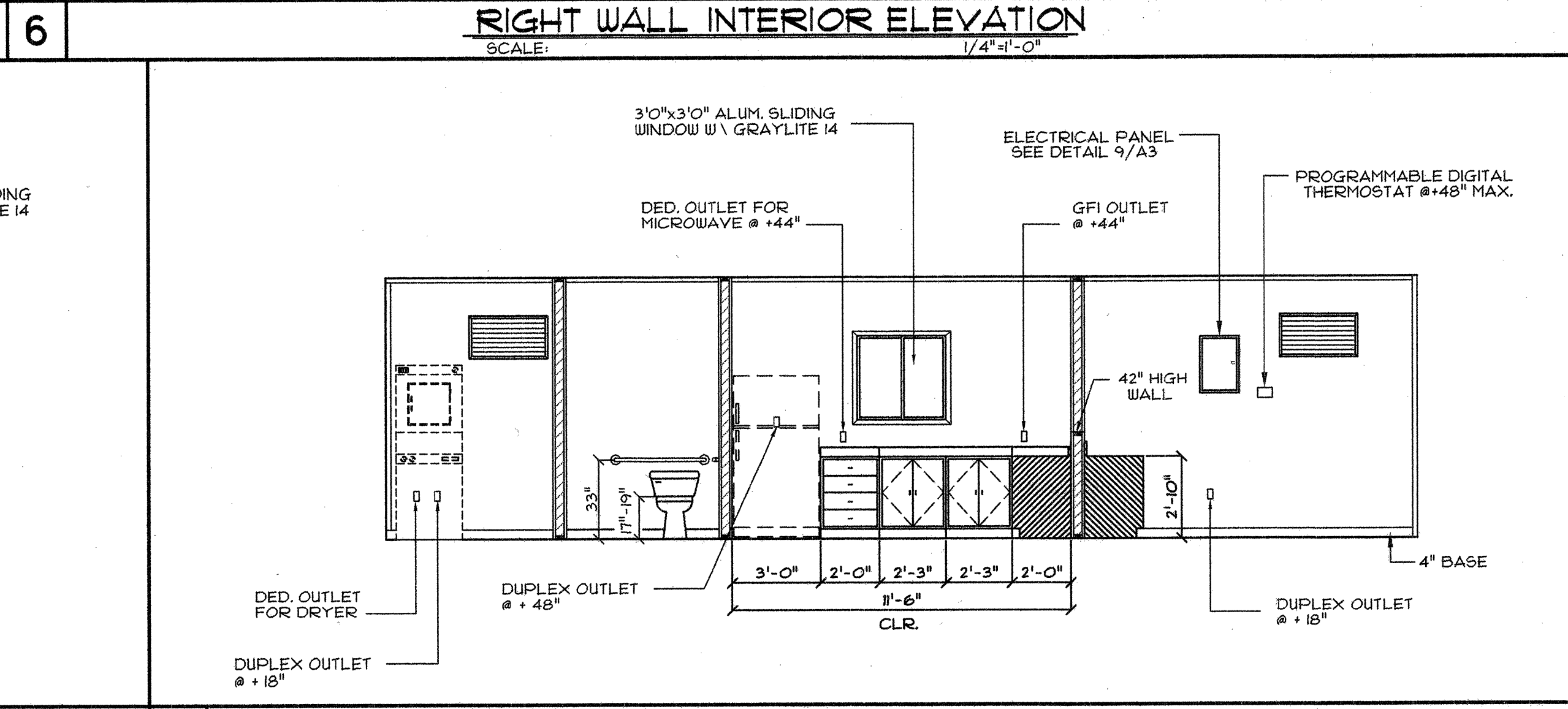
6 RIGHT WALL INTERIOR ELEVATION
SCALE: 1/4"=1'-0"



9 CABINET ELEVATION
SCALE: 1/4"=1'-0"



7 FRONT WALL INTERIOR ELEVATION
SCALE: 1/4"=1'-0"



8 REAR WALL INTERIOR ELEVATION
SCALE: 1/4"=1'-0"

DIVISION OF THE STATE ARCHITECT OFFICE OF REGULATION SERVICES

IDENTIFICATION STAMP
DIVISION OF THE STATE ARCHITECT

104083

BASED ON
PC-02-101236

DESIGN CRITERIA

ROOF: DEAD LOAD - 8.0 PSF
ROOF: LIVE LOAD - 20.0 PSF (SNOW)

FLOOR: DEAD LOAD - 8.0 PSF
FLOOR: LIVE LOAD - 50.0 PSF
(OPTIONAL) FLOOR: LIVE LOAD - 70.0 PSF
(OPTIONAL) FLOOR: LIVE LOAD - 125.0 PSF

WALLS: DEAD LOAD - 8.0 PSF
WIND: 80 MPH; EXPOSURE: C
qs=16.4 PSF; Ce=1.06; Cq AS REQ.
SSM: ZONE 4-R=4.5Q=2.8Ns=1.5Cs=0.44Ns=2.0Cs=0.64N

CONFIDENTIAL MATERIAL—THESE DOCUMENTS ARE THE PROPERTY OF AND ARE NOT TO BE REPRODUCED OR DISTRIBUTED WITHOUT FULL KNOWLEDGE AND WRITTEN CONSENT FROM ENVIROPLEX INC.
© COPYRIGHT 2001 ENVIROPLEX INC. (DRAWINGS PREPARED BY ENVIROPLEX, INC.)

REVISION DATE: BY:

DATE:

THIS MODULAR BLDG. HAS BEEN ENGINEERED BY A REGISTERED STRUCTURAL ENGINEER AND PREVIOUSLY REVIEWED & APPROVED BY THE DIVISION OF THE STATE ARCHITECT, FIRE & LIFE SAFETY AND ACCESS COMPLIANCE SECTION

10 APPROVALS

JH Lawler, Inc.
Structural Engineers
717 6th Street, Modesto, CA 95354
(209) 521-1143 FAX (209) 521-1186

REGISTERED PROFESSIONAL ENGINEER
CIVIL
NO. 52310
EXP. 3-31-05
STRUCTURAL
STATE OF CALIFORNIA

ENVIROPLEX, INC.
4777 E. CARPENTER ROAD STOCKTON, CA 95215
SAN MATEO COMMUNITY COLLEGE
(1) 36' x 40' CLASSROOM

FLOOR PLAN-INTERIOR&EXTERIOR ELEVATIONS - MATERIAL SPECIFICATIONS - NOTES

REVISION DATE: BY:

DATE:

THIS MODULAR BLDG. HAS BEEN ENGINEERED BY A REGISTERED STRUCTURAL ENGINEER AND PREVIOUSLY REVIEWED & APPROVED BY THE DIVISION OF THE STATE ARCHITECT, FIRE & LIFE SAFETY AND ACCESS COMPLIANCE SECTION

A1A