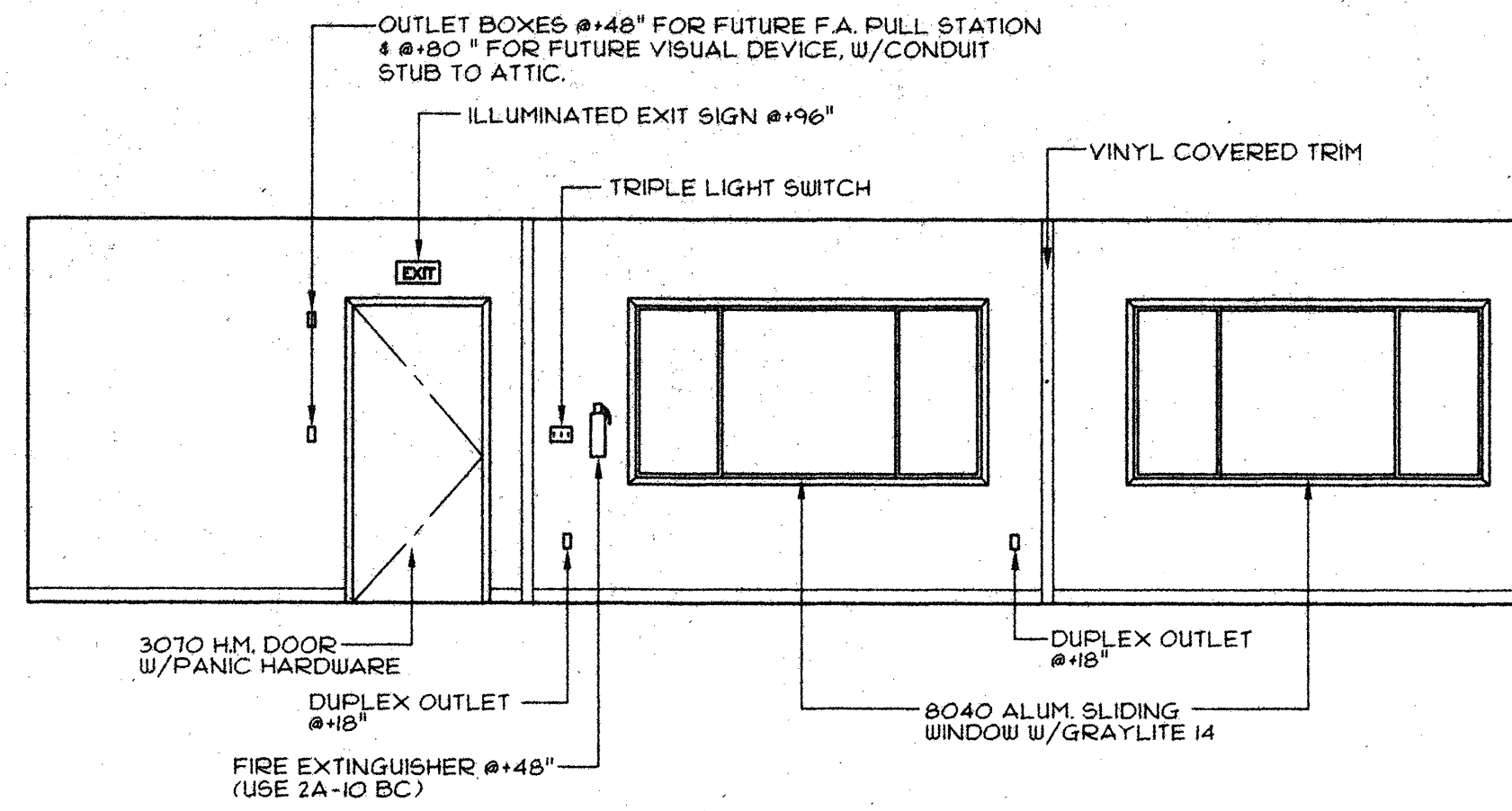
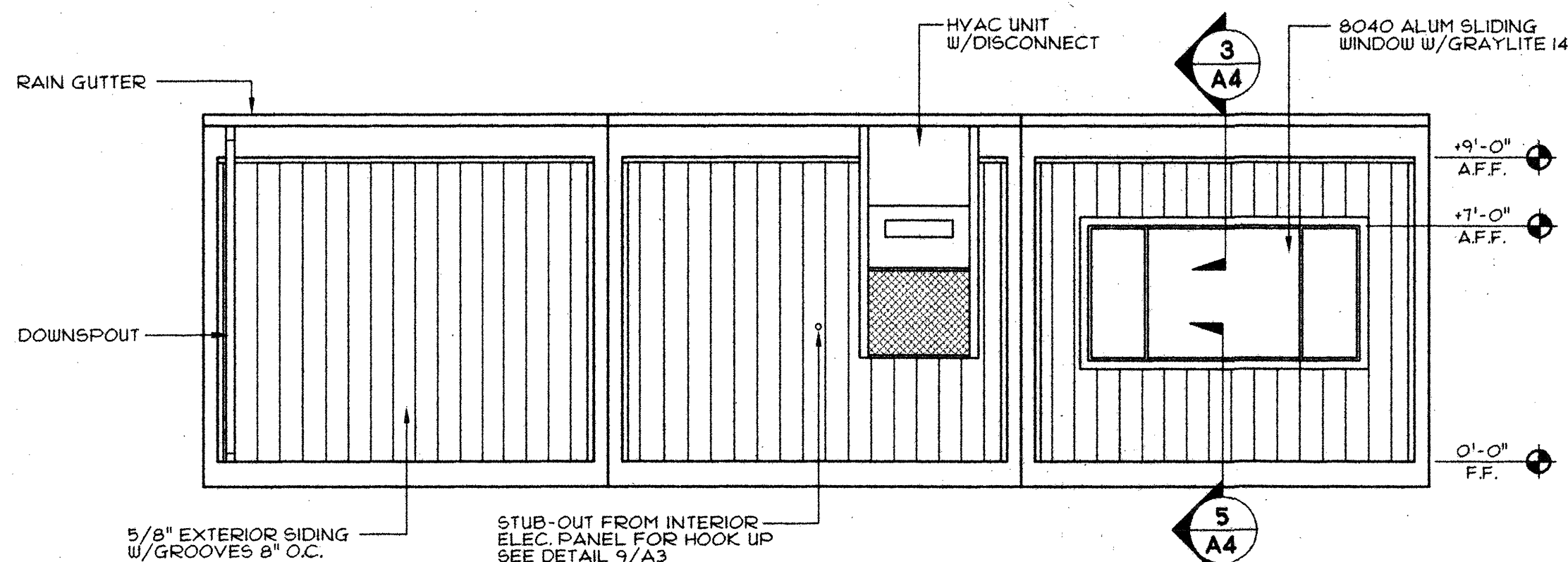


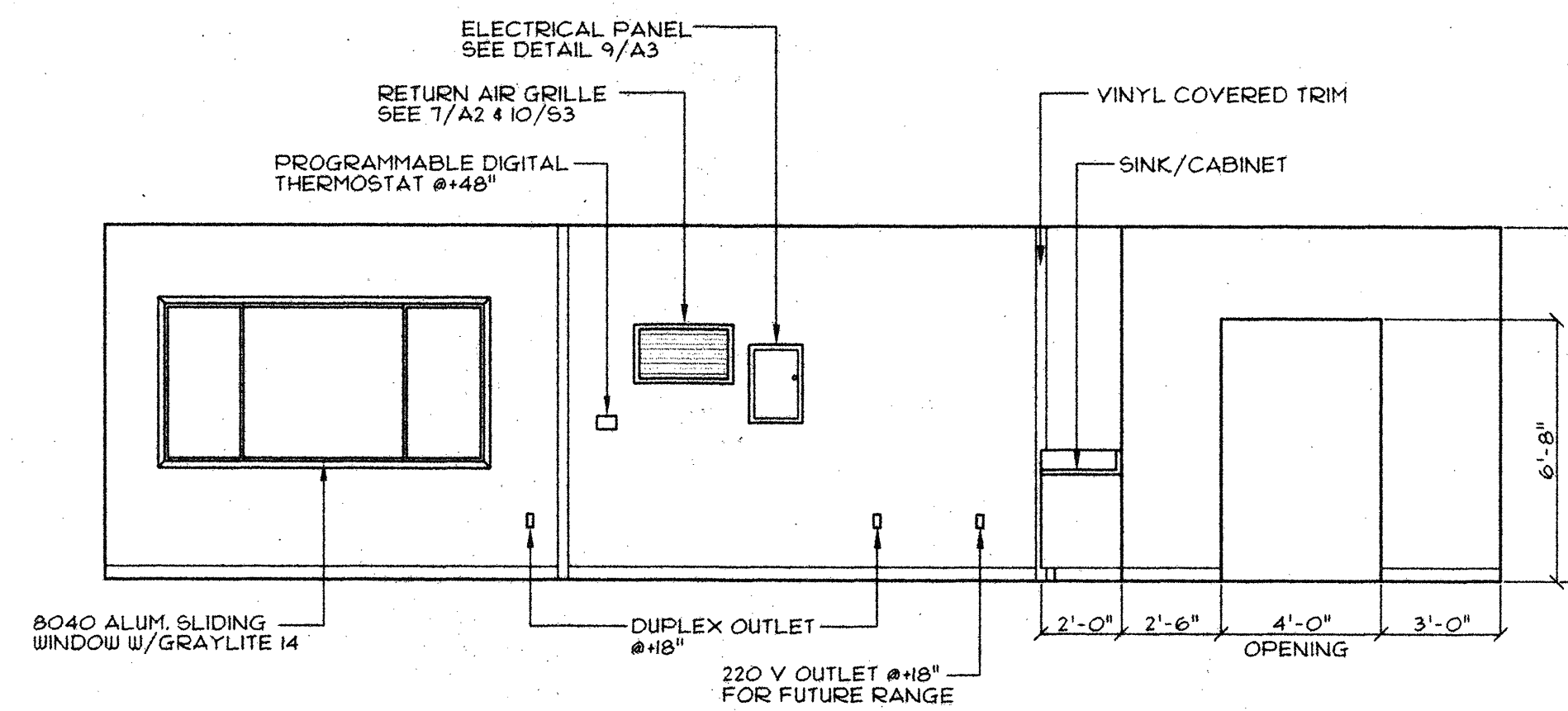
1 **END WALL EXTERIOR ELEVATION**
SCALE: 1/4"=1'-0"



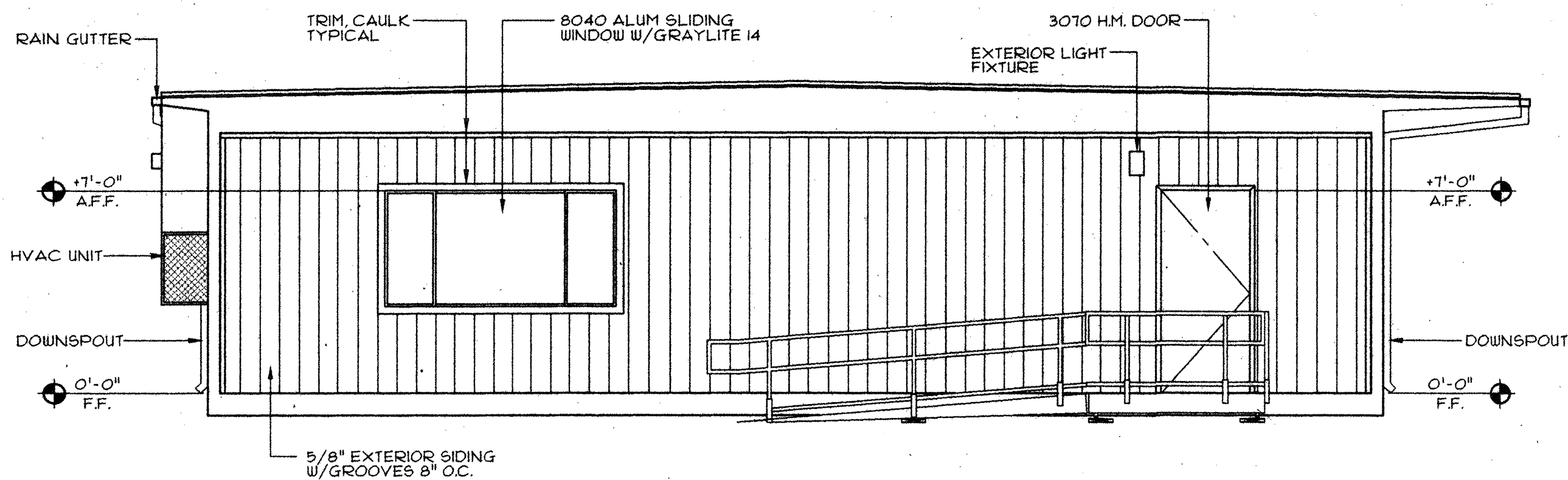
2 **END WALL INTERIOR ELEVATION**
SCALE: 1/4"=1'-0"



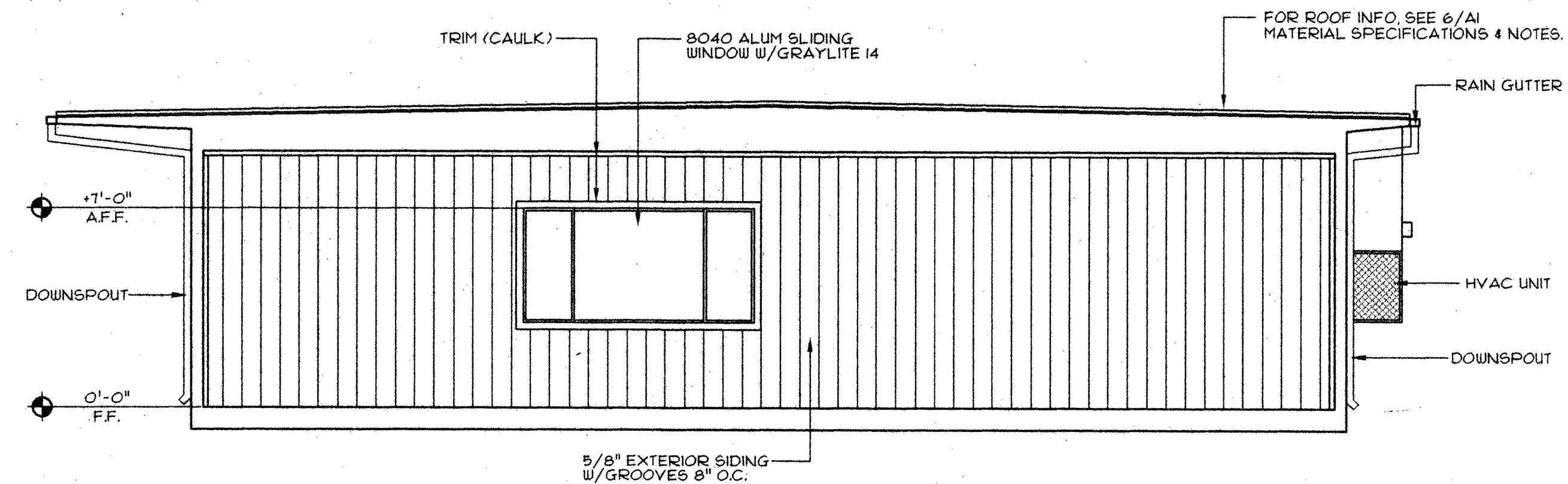
3 **END WALL EXTERIOR ELEVATION**
SCALE: 1/4"=1'-0"



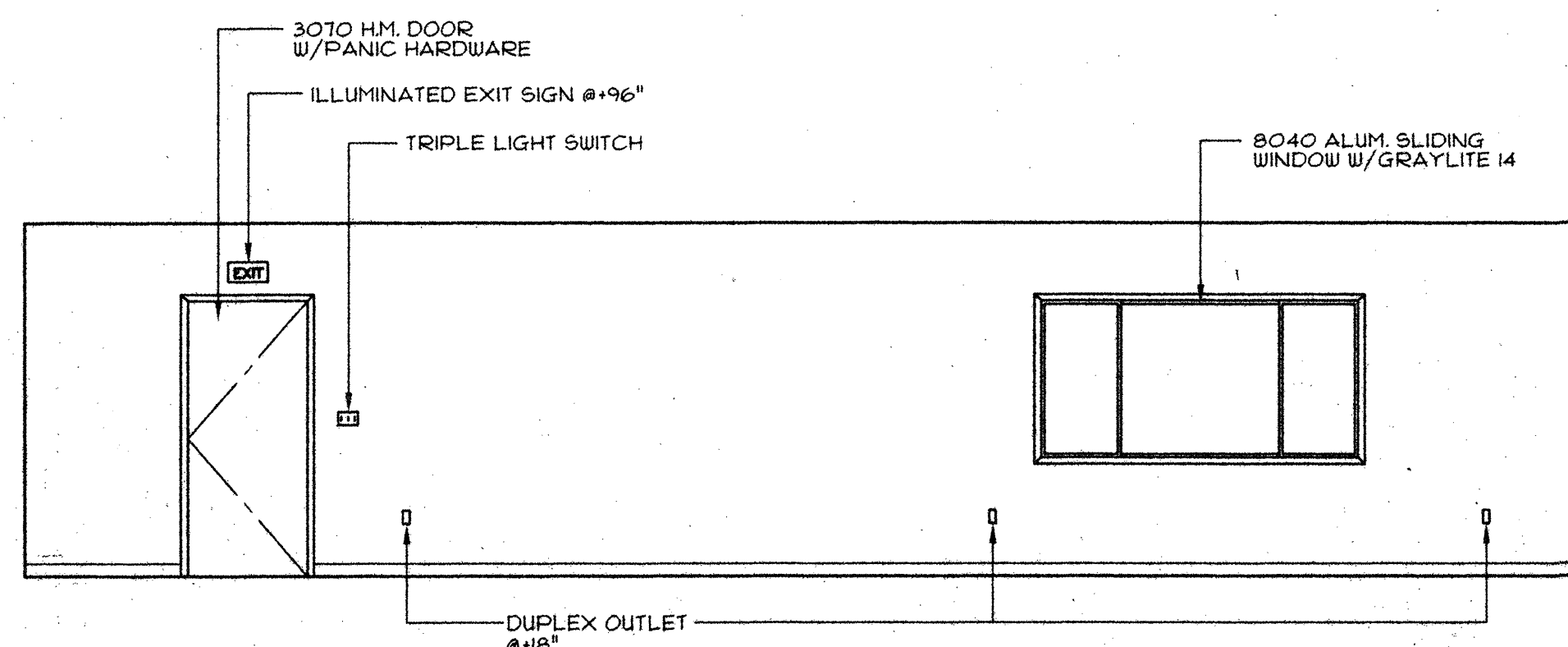
4 **END WALL INTERIOR ELEVATION**
SCALE: 1/4"=1'-0"



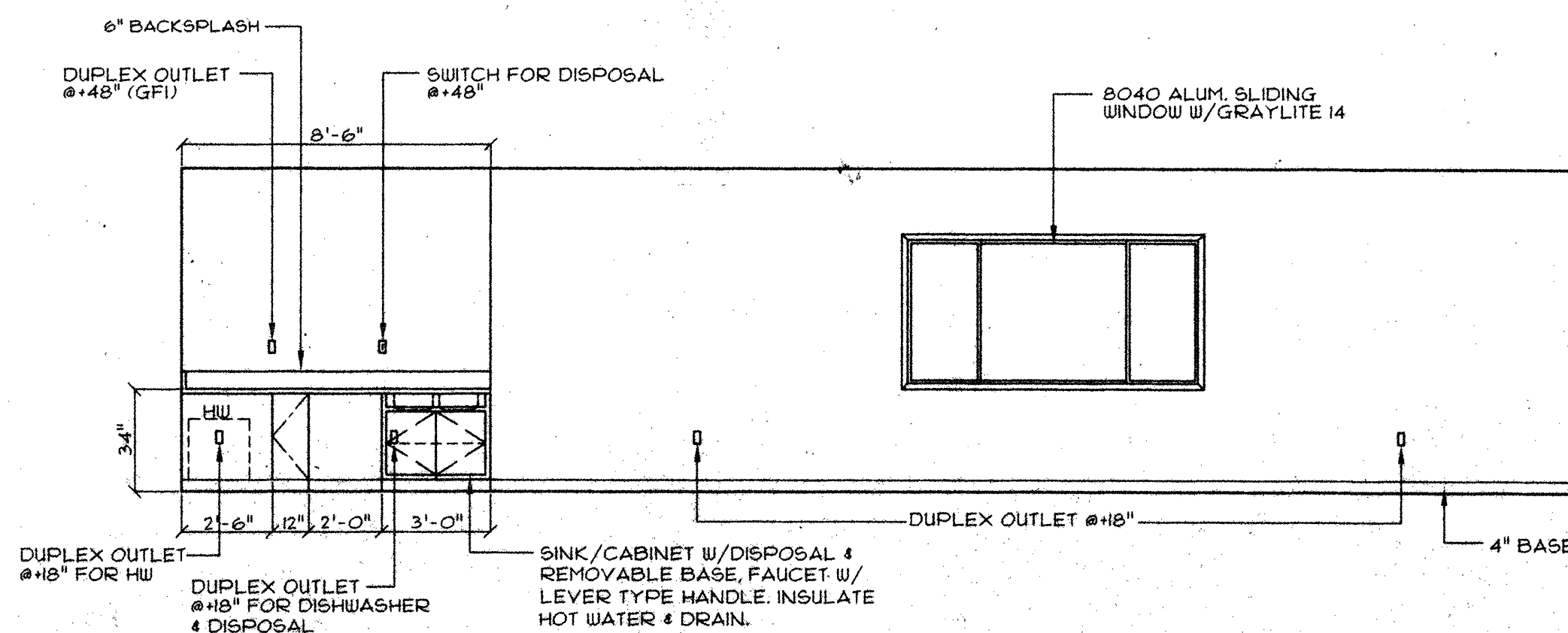
5 **SIDE WALL EXTERIOR ELEVATION**
SCALE: 1/4"=1'-0"



6 **SIDE WALL EXTERIOR ELEVATION**
SCALE: 1/4"=1'-0"



7 **SIDE WALL INTERIOR ELEVATION**
SCALE: 1/4"=1'-0"



8 **SIDE WALL INTERIOR ELEVATION**
SCALE: 1/4"=1'-0"

DIVISION OF THE STATE ARCHITECT OFFICE OF REGULATION SERVICES

REGISTERED ARCHITECT
JOHN M. LAWLER
NO. 52310
EXPIRES 03-31-97
STRUCTURAL
SINCE 03-31-97

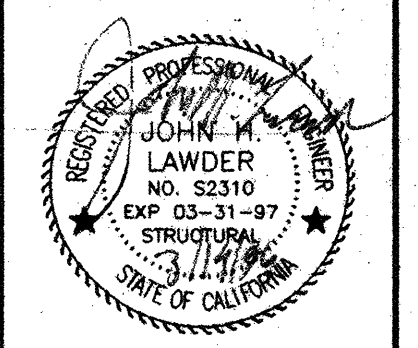
APR 6 & 9 04
AC 200 PLS 177 SS TMH/SF
4/24/96

DESIGN CRITERIA
ROOF: DEAD LOAD - 8.0 PSF
ROOF: LIVE LOAD - 20.0 PSF (SNOW)
FLOOR: DEAD LOAD - 8.0 PSF
FLOOR: LIVE LOAD - 50.0 PSF
WALLS: DEAD LOAD - 8.0 PSF
WIND: 80 MPH; EXP. C - 26.5 PSF
(PER DSA IR 23-16)
SEISMIC: ZONE 4, R_w=6, C=2.75

CONFIDENTIAL MATERIAL - THESE DOCUMENTS ARE THE PROPERTY OF AND ARE NOT TO BE REPRODUCED OR DISTRIBUTED WITHOUT FULL KNOWLEDGE AND WRITTEN CONSENT FROM ENVIROPLEX, INC.
© COPYRIGHT 1993 ENVIROPLEX, INC. (DRAWINGS PREPARED BY ENVIROPLEX, INC.)

9 **APPROVALS**

JH Lawder, Inc.
Structural Engineers
621 4TH STREET - MODESTO, CA 95354
(209) 521-1143 FAX (209) 521-1186



ENVIROPLEX, INC.
4777 E. CARPENTER ROAD STOCKTON, CA 95215
36'x40' RELOCATABLE CLASSROOM FOR
SKYLINE COLLEGE CHILD DEVELOPMENT CENTER

EXTERIOR ELEVATIONS
INTERIOR ELEVATIONS

REVISION DATE:	BY:

DATE:
THIS MODULAR BLDG. HAS BEEN ENGINEERED BY A REGISTERED STRUCTURAL ENGINEER AND PREVIOUSLY REVIEWED & APPROVED BY THE DIVISION OF THE STATE ARCHITECT, FIRE & LIFE SAFETY AND ACCESS COMPLIANCE SECTION

DSA APPLICATION NO.

A1A