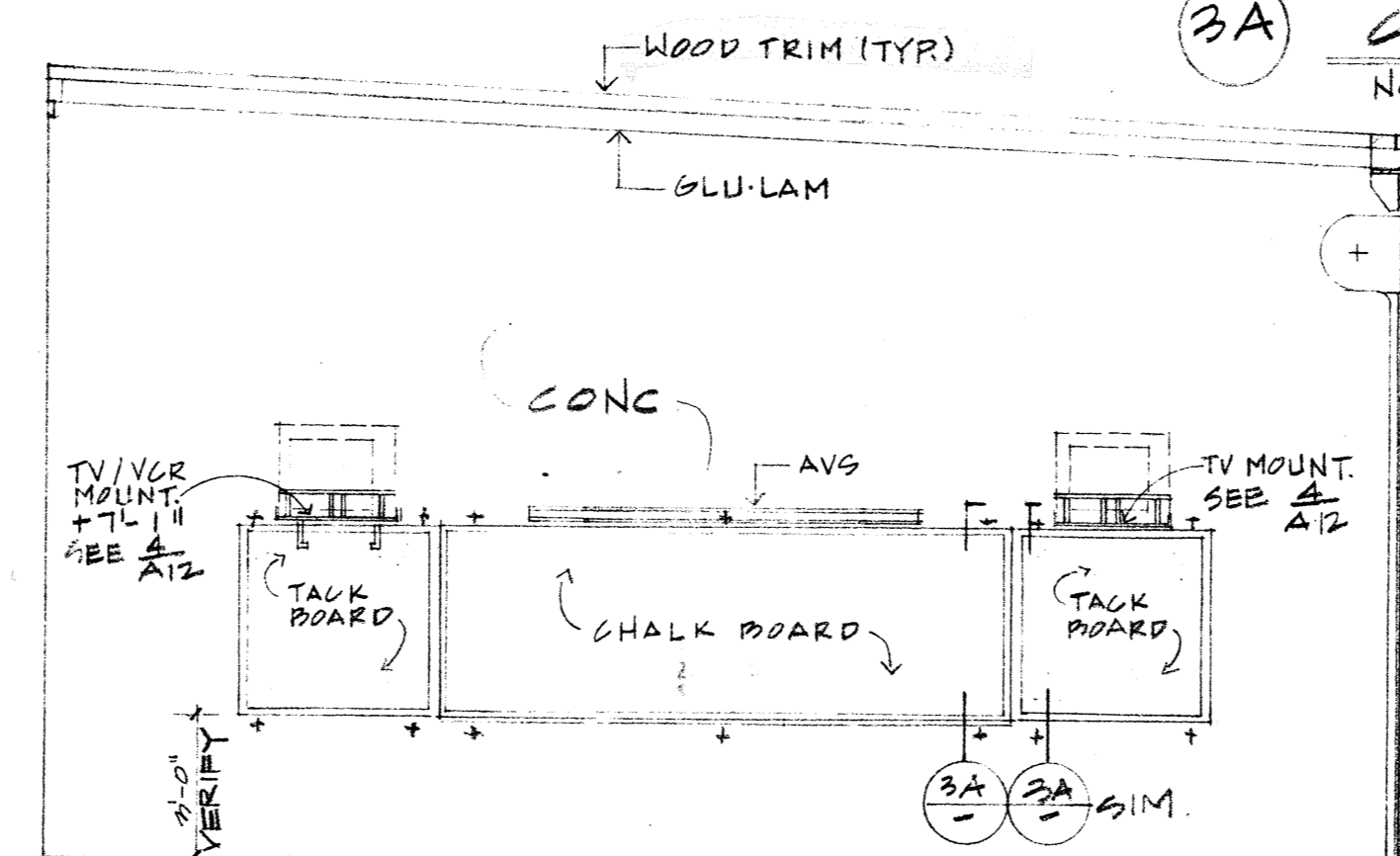
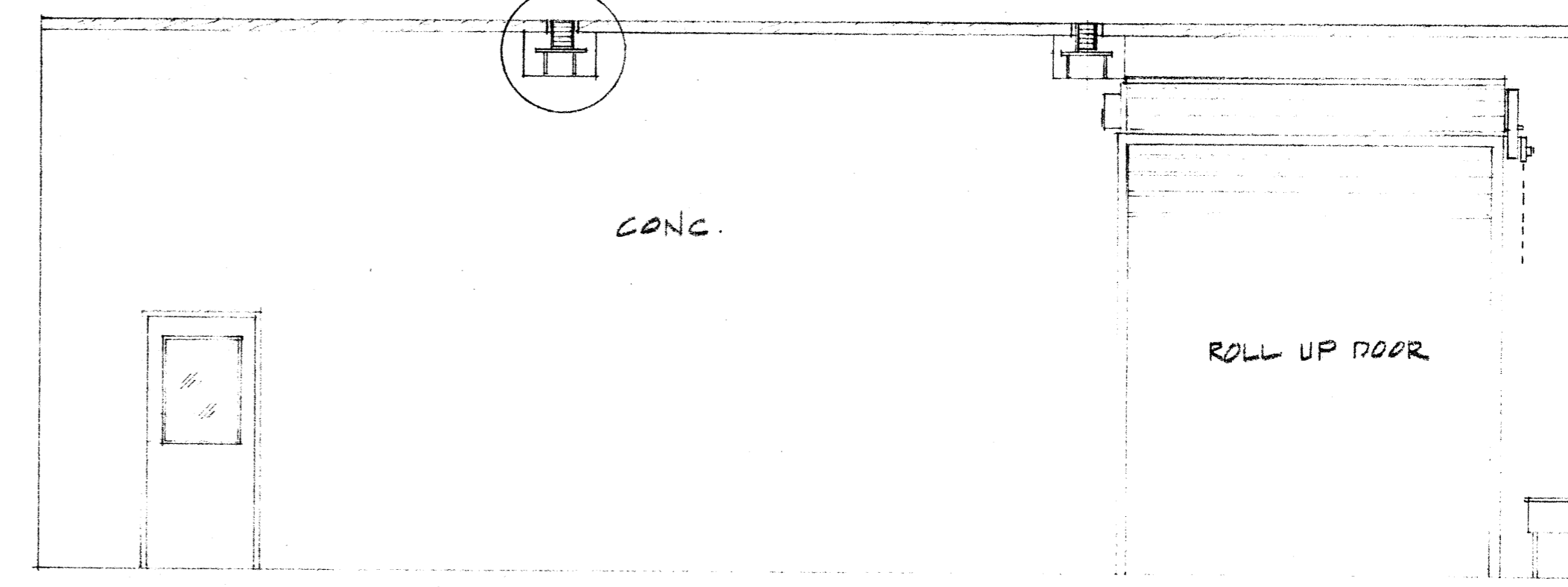


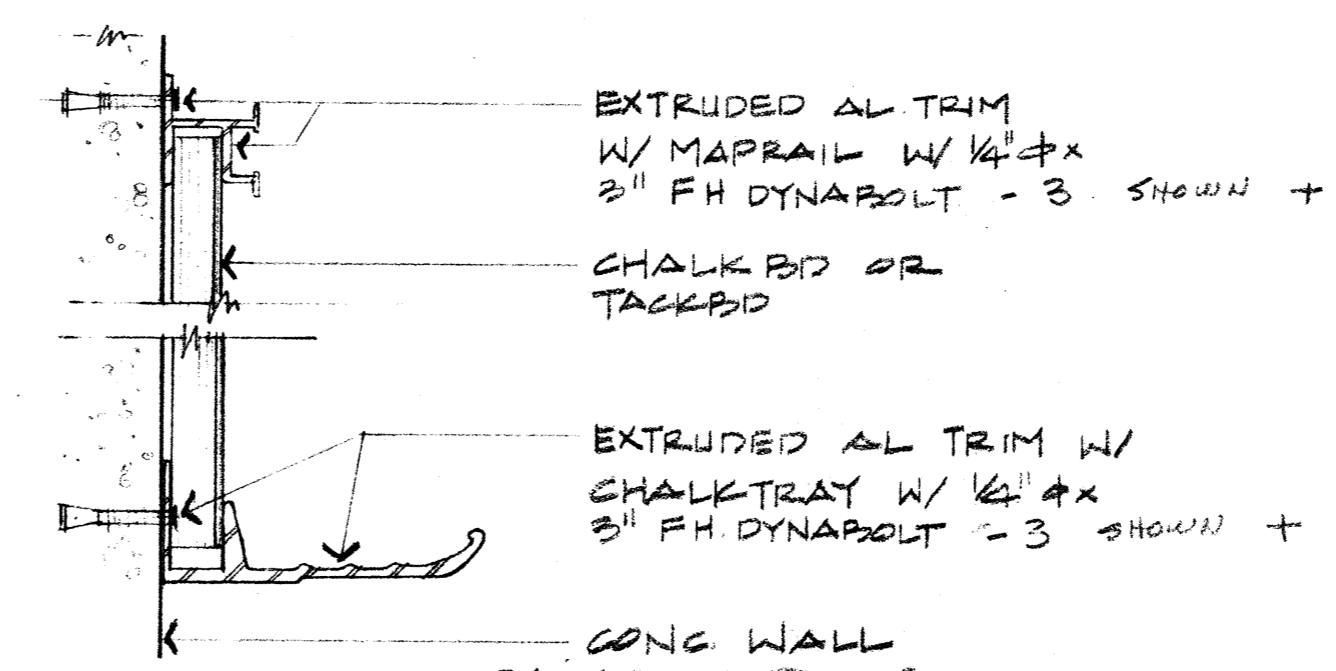
WEST



NORTH



EAST



3A CHALKBOARD MOUNTING DETAIL  
NO SCALE

05A - STRUCTURAL SAFETY

STATE FIRE MARSHAL

15A - ACCESS COMPLIANCE

12-14-93

OFFICE OF THE STATE ARCHITECT  
ACCESS COMPLIANCE

53721 DEC 14 '90

APPLICABLE PER M. AND

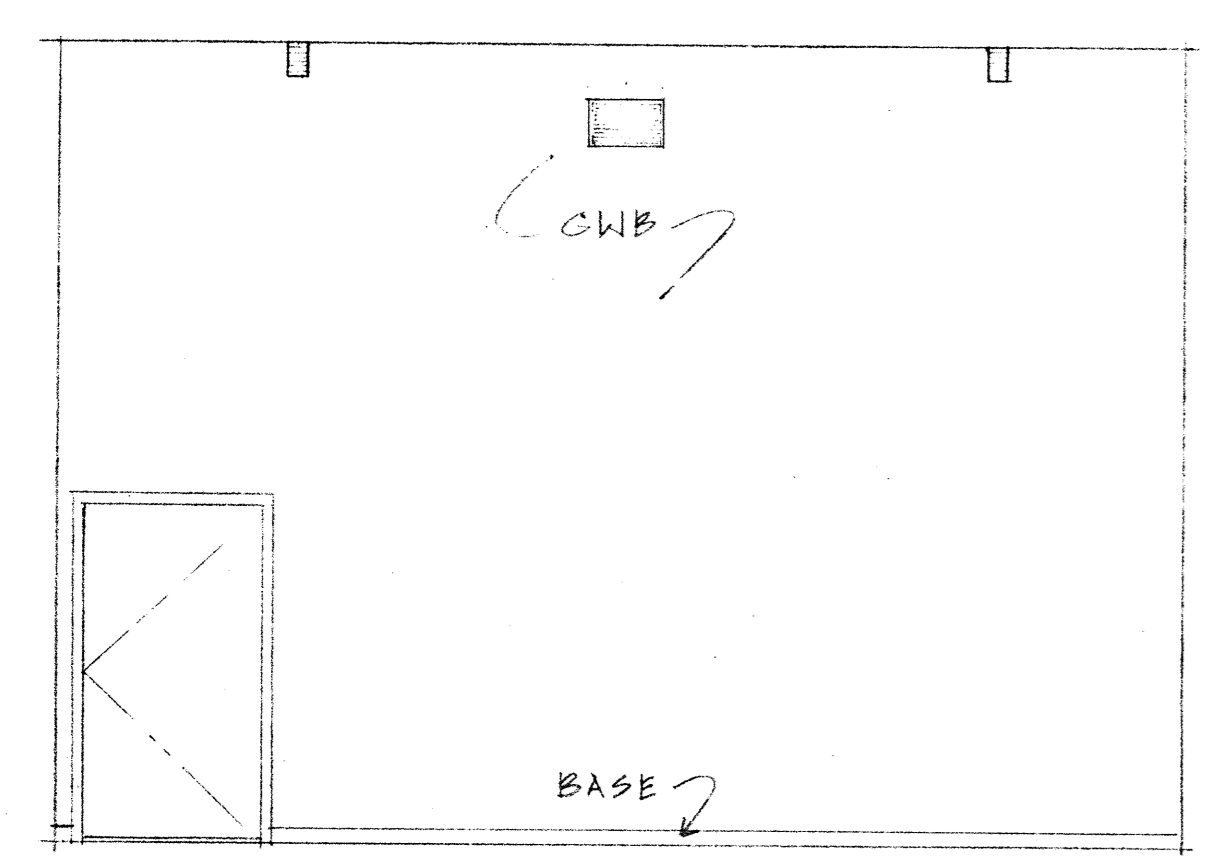
NO. 37

IDENTIFICATION STAMP  
Department of General Services  
Office of the State Architect

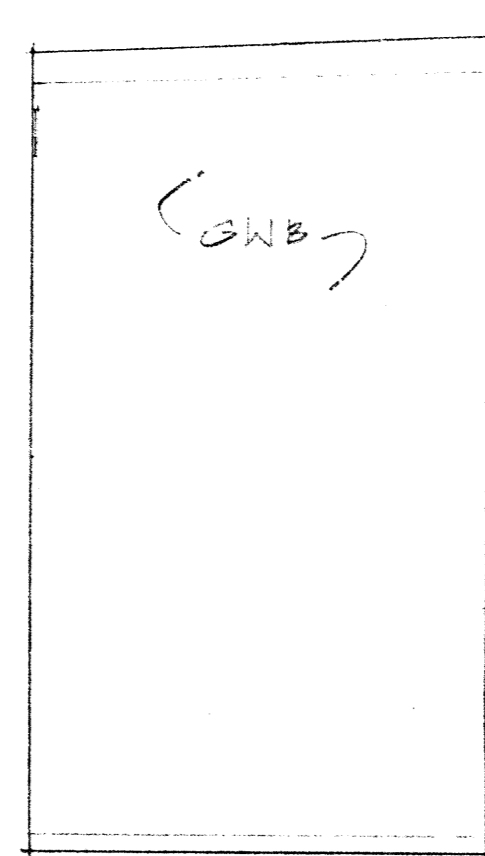
1890

Structural Safety Section  
Page # 53721  
DATE 12/14/93

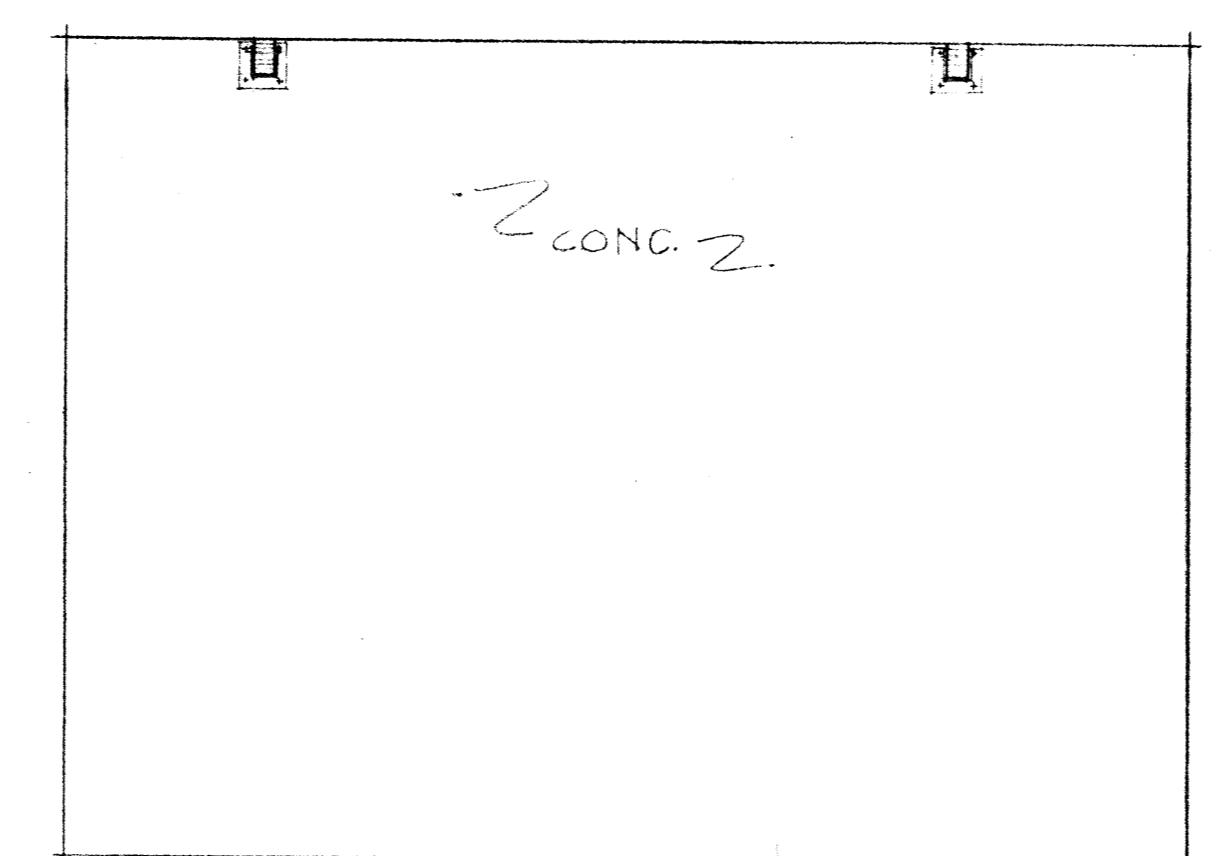
INTERIOR ELEVATIONS @ ELECTRONICS VOCATIONAL CLASSROOM



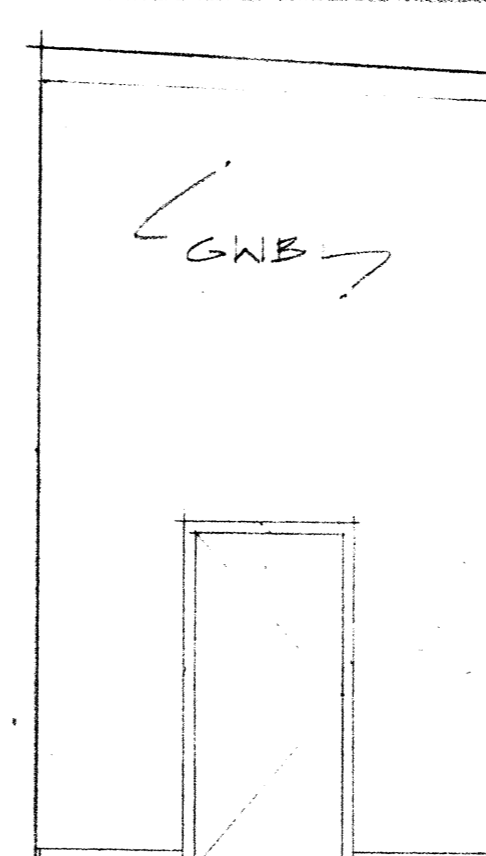
EAST



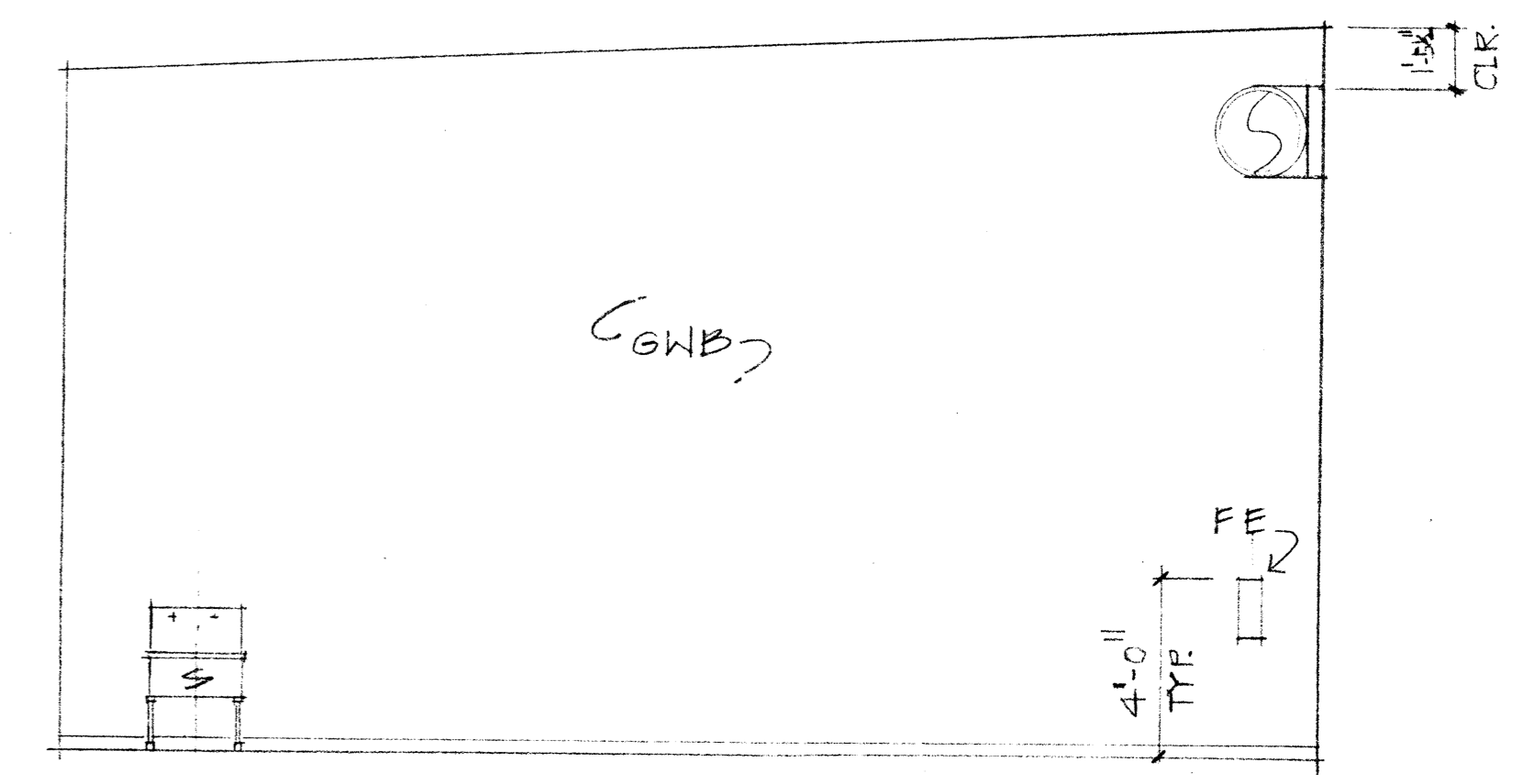
SOUTH



WEST

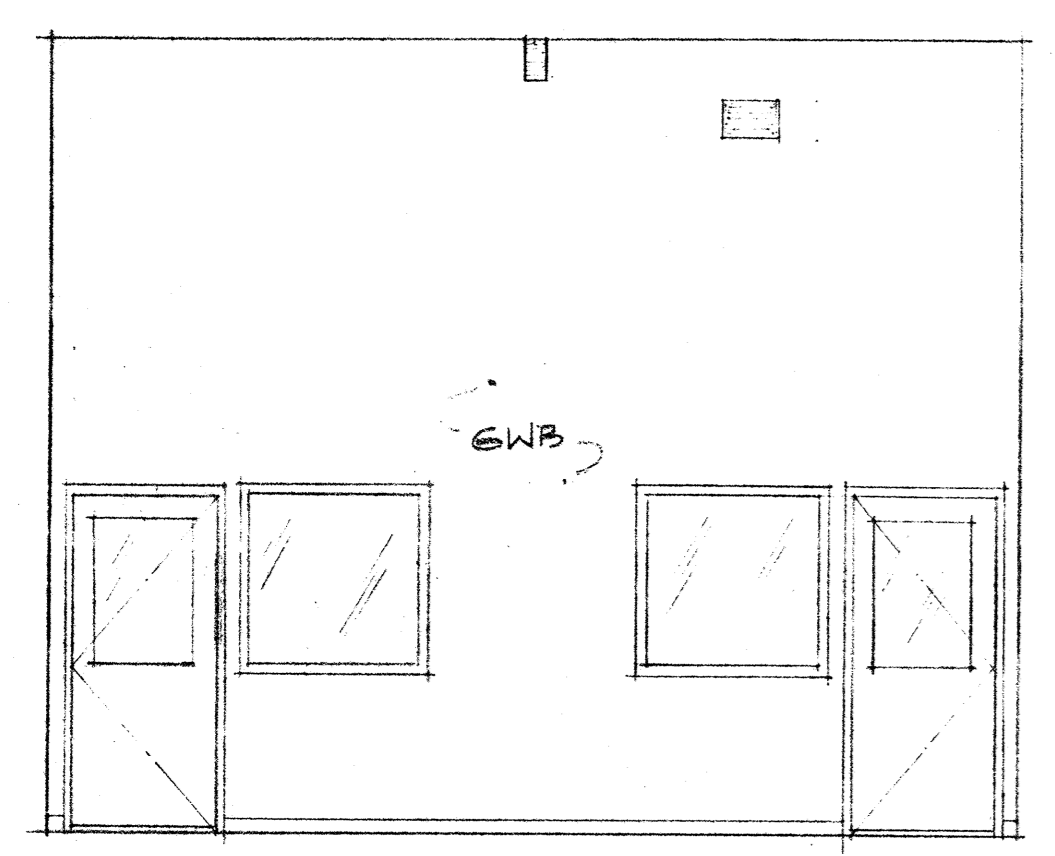


NORTH

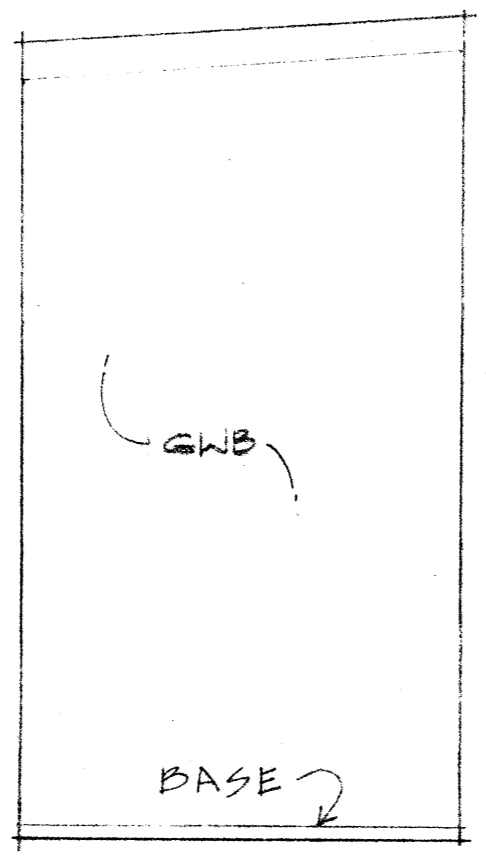


SOUTH

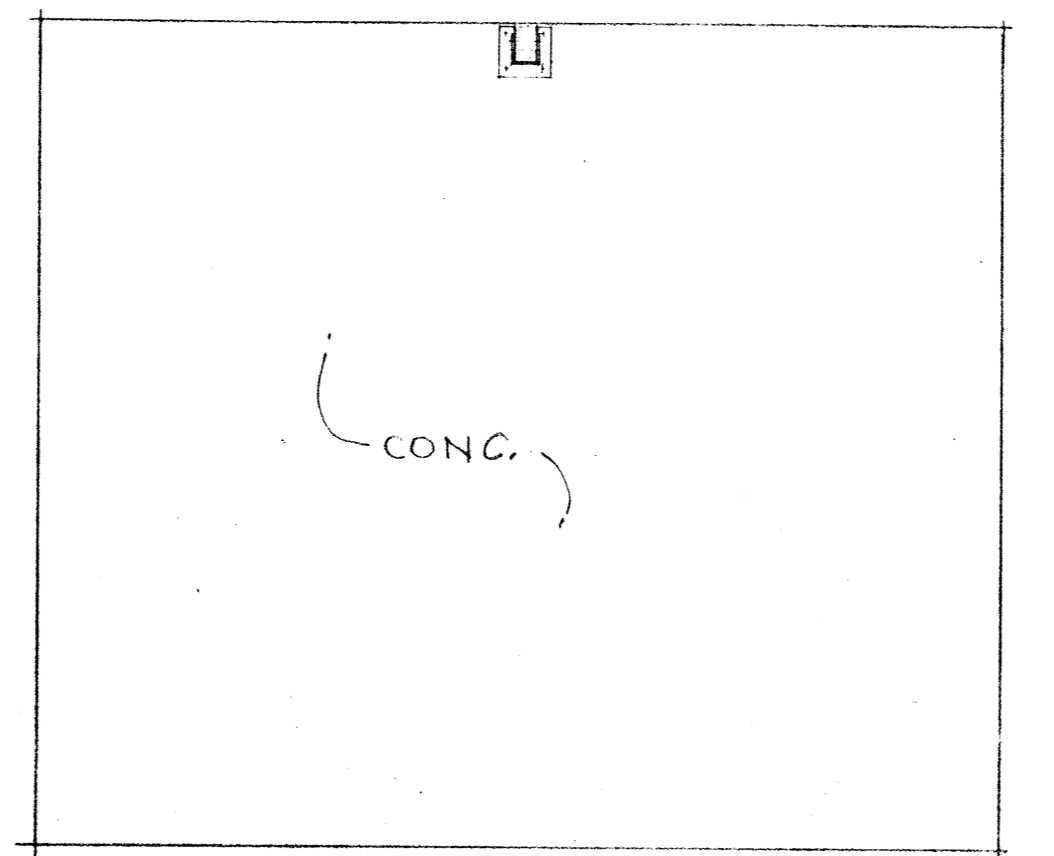
INTERIOR ELEVATIONS @ ELECTRONICS TOOLS ROOM



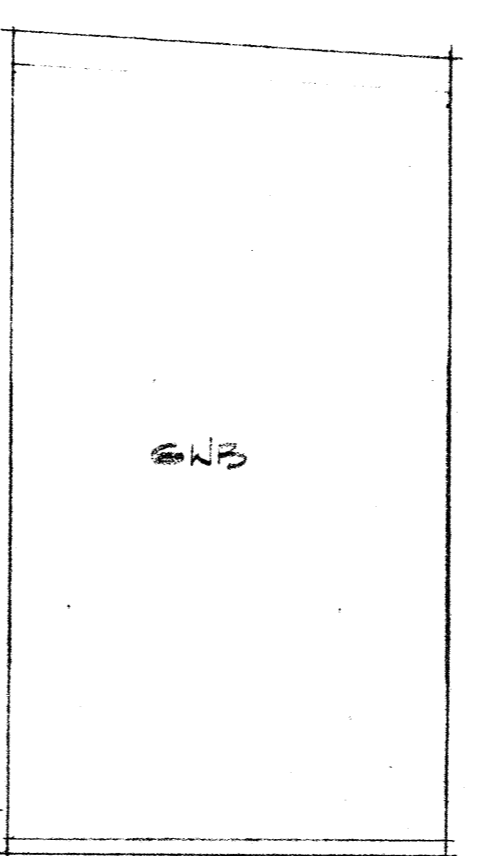
EAST



SOUTH



WEST



NORTH

INTERIOR ELEVATIONS @ OFFICE

1/4" = 1'-0"

REV 8 22 90

KELLER AND DASEKING ARCHITECTS

WALTER L. KELLER A.I.A.  
WILLIAM R. DASEKING A.I.A.

Walter L. Keller  
C-1334

825 OAK GROVE AVENUE  
MENLO PARK, CA 94025-4159/322-5386

AUTOMOTIVE CLASSROOM BUILDING  
TOILET ROOM RENOVATIONS

SKYLINE COLLEGE

SAN MATEO COUNTY COMMUNITY COLLEGE DISTRICT

8906

3-12-90

A14

15 x 41