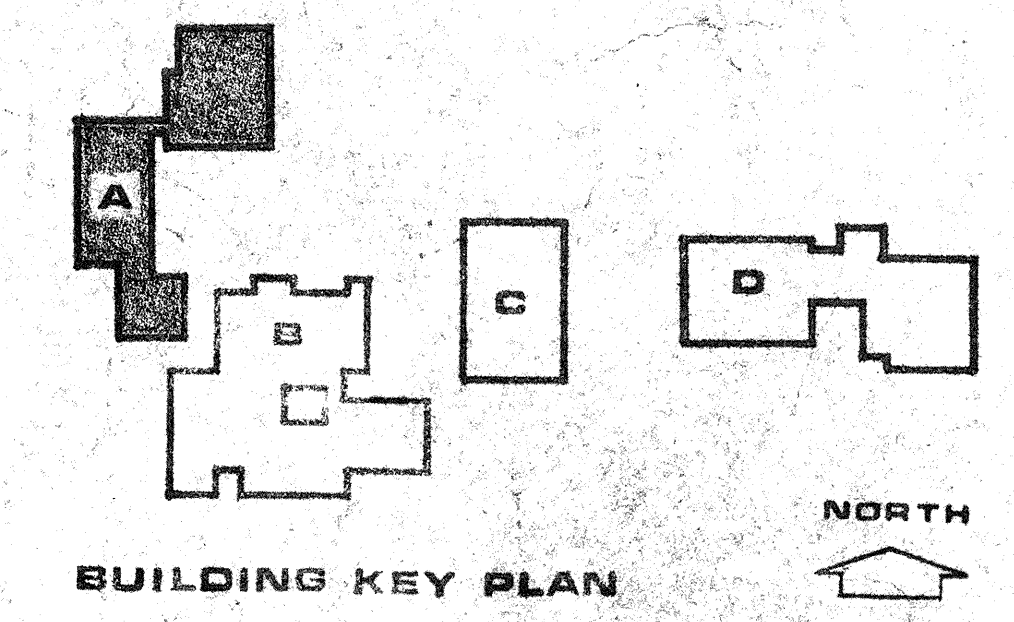
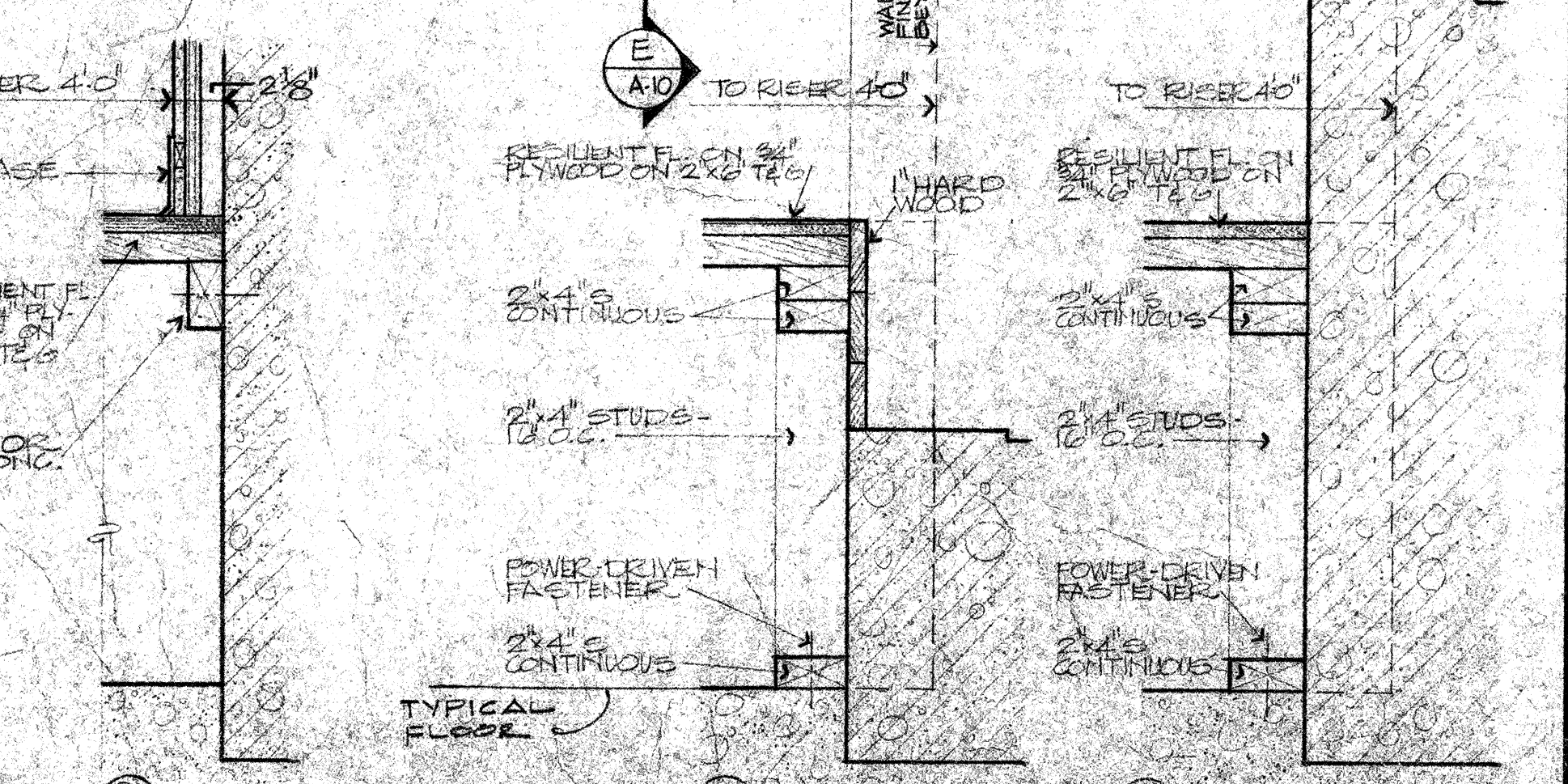
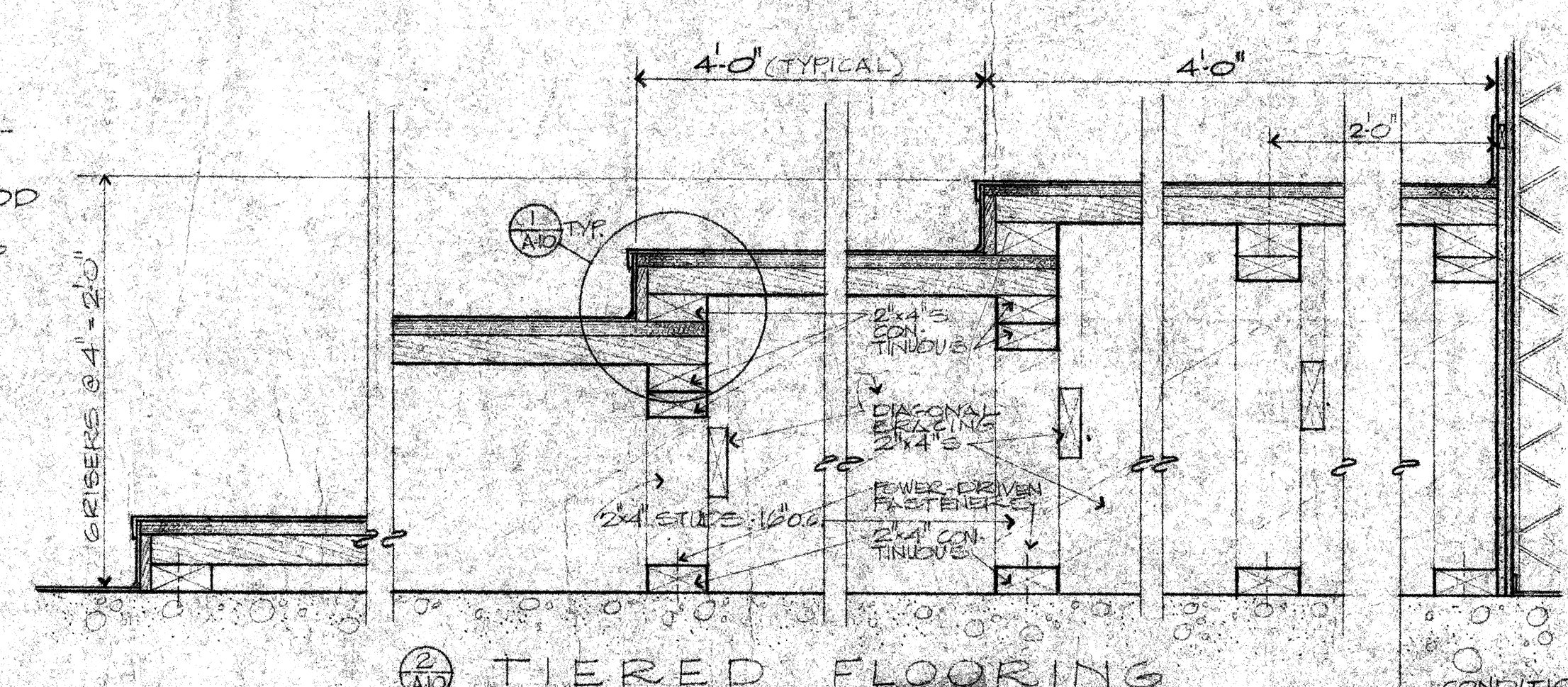
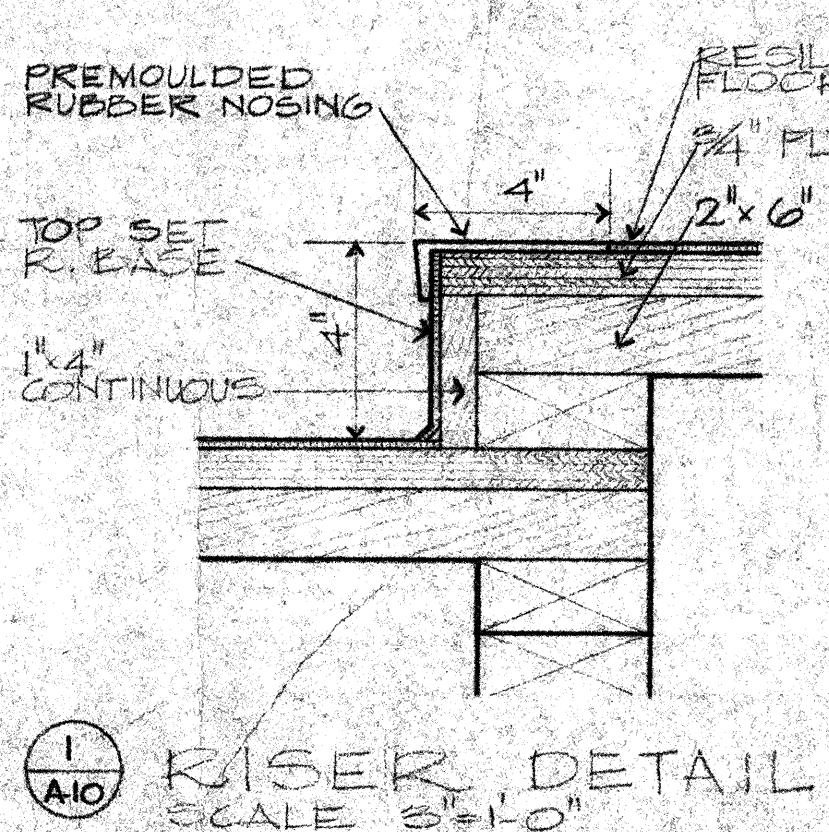


**NOTE:**

1. ALL EXTERIOR SURFACES OF EXTERIOR WALLS BELOW GRADE WHERE SPACES OR SPACES OCCUR SHALL HAVE WATERPROOF MEMBRANE, PROTECTIVE ROOFING & FLASHING & REINFORCING TOP.
2. ALL TOP SURFACES OF SLABS BELOW GRADE WHERE SPACES OR SPACES OCCUR SHALL HAVE WATERPROOF MEMBRANE & CONCRETE PROTECTIVE SLAB.



**JOHN CARL WARNECKE F.A.I.A.**  
**JOHN CARL WARNECKE AND ASSOCIATES**  
**ARCHITECTS AND PLANNING CONSULTANTS**  
 51 NEW MONTGOMERY STREET SAN FRANCISCO

**COLLEGE OF SAN MATEO**  
 SAN BRUNO CALIFORNIA

BUILDING A SCIENCE, TECH/VOC.  
 EXTERIOR ELEVATIONS & BLDG. SECTIONS  
 SCALE AS NOTED  
 JOB NO. 44-15  
 D.B. EFJ  
 CHECK BY  
 DATE JAN. 12, 1967  
 SHEET NUMBER  
**A10**  
 OF 20 SHEETS  
 REVISION NO.

NO.	REVISION DESCRIPTION	DATE APPROVED

D. MADDOX THOMPSON  
 STRUCTURAL ENGINEER  
 C. KELLER & GARDNER  
 CIVIL ENGINEERS  
 277 T 4 B APPROVED JAN. 15, 1967  
 JOHN CARL WARNECKE  
 ARCHITECT