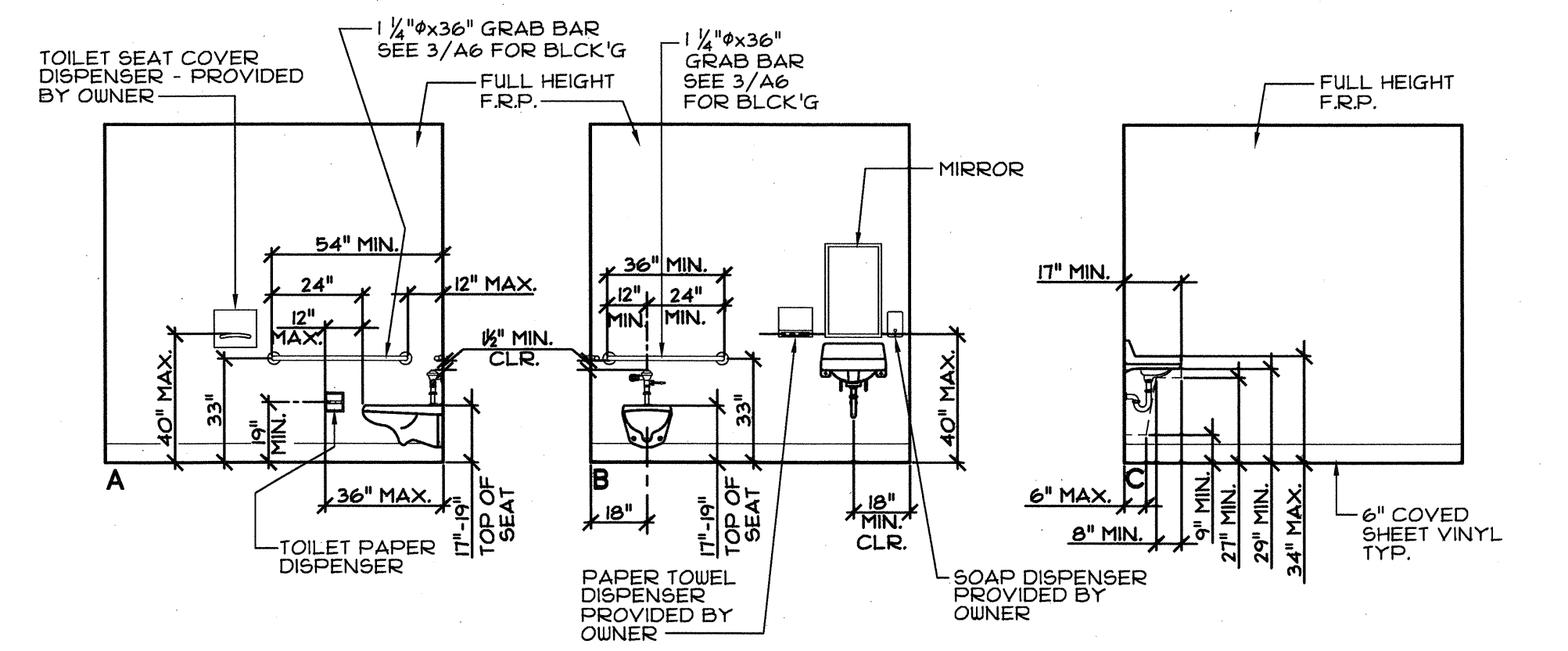
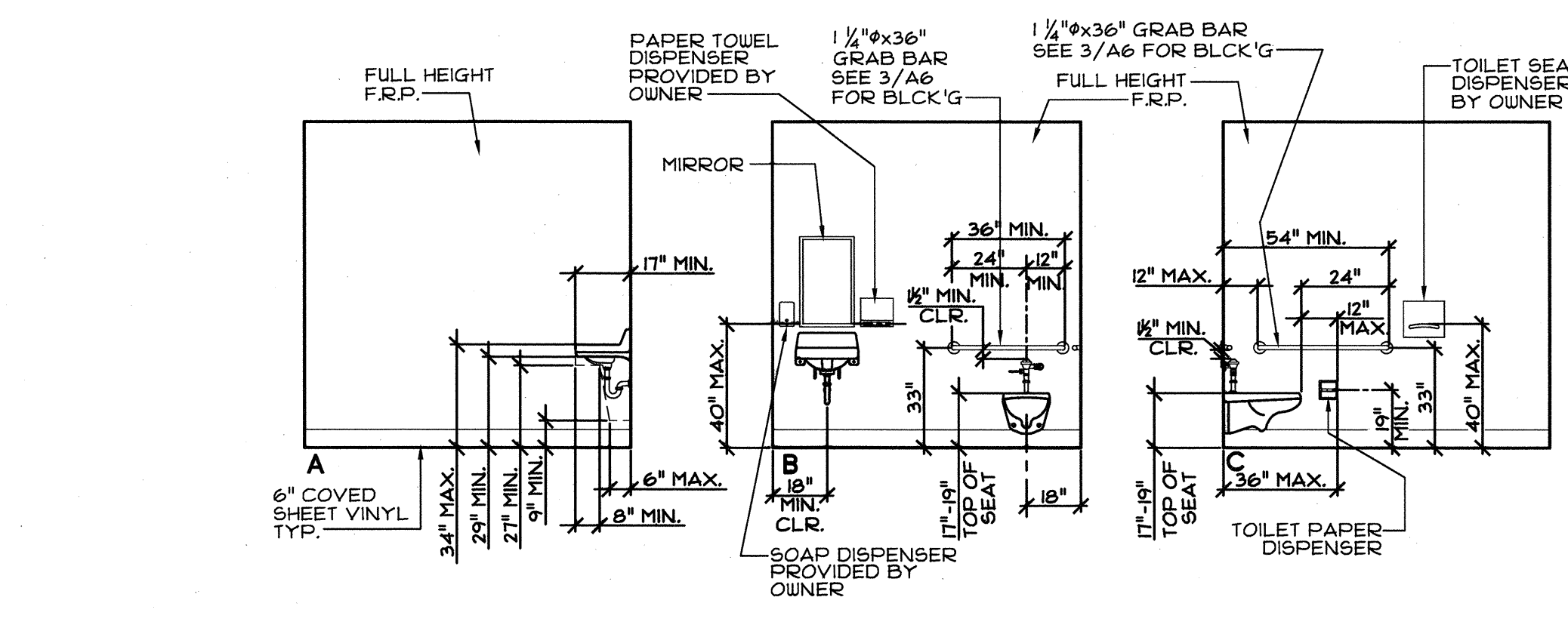


RESTROOM FLOOR PLAN
SCALE: 1/4"=1'-0"



INTERIOR ELEVATION
SCALE: 1/4"=1'-0"



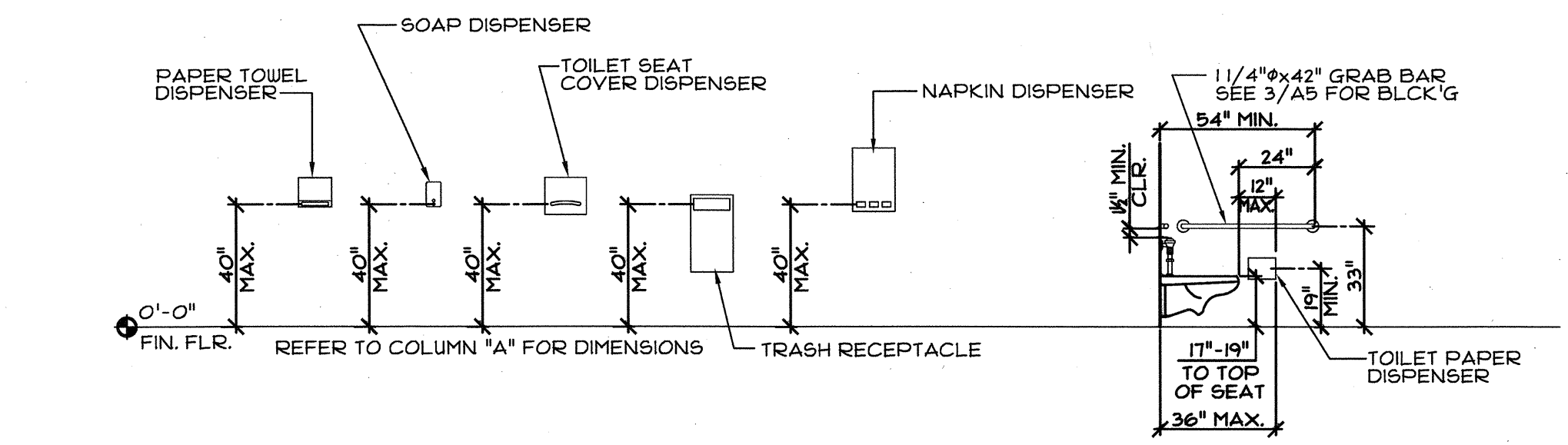
INTERIOR ELEVATION
SCALE: 1/4"=1'-0"

TYPICAL NOTES:
1. NO SHARP EDGES OR ABRASIVE SURFACES UNDER LAVATORY.
2. IF HOT WATER IS PROVIDED, INSULATE HOT WATER & DRAIN PIPES.

CBC TABLE 1115-B
DIMENSIONS FOR ACCESSIBLE PLUMBING FIXTURES AND TOILET ROOM ACCESSORIES

DIMENSION	A
TOILET CENTERING FROM WALL	18"
TOILET SEAT HEIGHT	17"-19"
GRAB BAR HEIGHT - SIDE	33"
GRAB BAR HEIGHT - BACK	33"
TOILET PAPER IN FRONT OF TOILET	12" MAX.
NAPKIN DISPOSAL IN FRONT OF TOILET	12" MAX.
DISPENSER OR MIRROR HEIGHT	40" MAX.
LAVATORY/SINK TOP HEIGHT	34" MAX.
LAVATORY/SINK KNEE CLEARANCE	27" MIN.
URNAL LIP HEIGHT	17" MAX.
URNAL FLUSH HANDLE HEIGHT	44" MAX.
DRINKING FOUNTAIN BUBBLER HEIGHT	36" MAX.
DRINKING FOUNTAIN KNEE CLEARANCE	27" MIN.
RAMP/STAIR HANDRAIL HEIGHT	34"-38"

A = ADULT DIMENSIONS - (AGE 12 AND OVER)



TYPICAL ACCESSIBLE MOUNTING HEIGHTS

- FLOORING - COMMERCIAL SHEET VINYL, ARMSTRONG CORLON OR EQUAL
NOTE: APPLICATION AND MAINTENANCE OF POLISHED-COATED FLOOR SURFACES (BY OWNER) SHALL BE SLIP RESISTANT. (0.5 MIN. COEFFICIENT OF FRICTION PER ASTM D-2047)
- BASE TRIM - 6" COVED SHEET VINYL (SAME AS FLOORING)
- WALL PANELS - FIBERGLASS REINFORCED POLYETHYLENE PANELS OVER 1/2" WATER RESISTANT GYPSUM WALL BOARD # PLUMBING WALLS ONLY
- ADHESIVES - ALL ADHESIVES SHALL BE WATER BASE, SOLVENT BASE NOT ACCEPTABLE. FURNISH AND APPLY PER MANUFACTURER'S WRITTEN INSTRUCTIONS.
- SEALANT - "VULKEM" SEALANT, POLYURETHANE, MANUFACTURED BY MAMECO INTERNATIONAL OR APPROVED EQUAL.
- PAINT - (EXTERIOR WOODS)
PRIMER-----ACRYLIC UNDERCOAT
FINISH-----ACRYLIC ENAMEL
(METALS)
PRIMER-----RED OXIDE ALKYD
FINISH-----ACRYLIC ENAMEL
- M.D.O. BUILDING, DOOR, & WINDOW TRIM. TRIM SHALL BE SEALED AT ALL EDGES SEALANT. PAINTED TO MATCH TRIM OR SIDING.
EXTERIOR SIDING - 8" O.C. GROOVED M.D.O. PLYWOOD OR STUCCO PATTERN FACED EXTERIOR SIDING. (MINIMUM NET THICKNESS 3/8")
- HOLLOW METAL DOORS AND FRAMES - SIZES NOTED ON PLAN, 1 3/4" THICK 18 GA. FULL FLUSH DOOR IN 16 GA. METAL FRAME
EXIT DOOR SHALL BE OPENABLE FROM THE INTERIOR WITHOUT A KEY OR SPECIAL KNOWLEDGE OR EFFORT.
CLOSERS FOR EXTERIOR DOORS SHALL BE SET FOR A MAXIMUM OPENING PRESSURE OF 5 LBS. MAX.
DEADBOLTS NOT PERMITTED UNLESS OPERABLE WITH A SINGLE EFFORT USING LEVER HANDLE.
DOOR HANDLES, PULLS, LATCHES, LOCKS AND OTHER OPERATING DEVICES ON DOORS REQUIRED TO BE ACCESSIBLE SHALL NOT REQUIRE TIGHT GRASPING, TIGHT PINCHING, OR TWISTING OF THE WRIST TO OPERATE.
DOOR SWINGS CAN BE RIGHT OR LEFT HAND HINGE.
HARDWARE SHALL BE CENTERED BETWEEN 30" AND 44" ABOVE FINISHED FLOOR.
LOCKSET-----SCHLAGE D70PDRHO OR EQUAL
HINGES-----HAGER BB279 N.R.P 4-1/2"x4-1/2" OR EQUAL
CLOSER-----NORTON 850BF OR EQUAL
THRESHOLD-----PEMCO 271A OR EQUAL
DOOR BOTTOM-----PEMCO 216AV OR EQUAL
WEATHERSTRIP-----PEMCO 306A OR EQUAL
- ASPHALT SHINGLE:
SEE ESR-1389
- PLUMBING FIXTURE SCHEDULE:
WATER CLOSET-----KOHLER "KINGSTON" (128 G.P.F.) K-4325 OR EQUAL
W/ SLOAN ROYAL III-128 FLUSH VALVE (128 G.P.F.) OR EQ.
SEAT-----BEMIS 1955-55C (O.F.L.C.) OR EQUAL
URINALS-----KOHLER "DARFIELD" K-5024-T (05 G.P.F.) OR EQUAL
W/ SLOAN MODEL 106-05 FLUSH VALVE (05 G.P.F.) OR EQ
LAVATORIES-----KOHLER "KINGSTON" K-2005 20" x 18" OR EQUAL
FAUCET-----T & S BRASS, B-271-F05 (05 GPM) OR EQUAL
OPTIONAL WATER HEATER-----"AO 6MITH", PEC-30, 30 GAL. ELECTRIC, 15359 INPUT RATE, (OR EQUAL)
COLD WATER PIPING-----TYPE L COPPER
DRAIN, WASTE & VENT-----ABS AND PVC PIPES, STRAPPED TO RESIST HORIZONTAL DISPLACEMENT DUE TO EARTHQUAKE MOTION PER TITLE 24, PART 5, CALIFORNIA CODE OF REGULATIONS, CHAPTER 4, SEC. 401 (A)

- ALL PLUMBING FIXTURES AND ACCESSORIES TO BE INSTALLED IN ACCORDANCE WITH ACCESSIBILITY REQUIREMENTS. (PER SECTION 115B C.B.C.)
THE FORCE REQUIRED TO ACTIVATE CONTROLS SHALL BE NO GREATER THAN 5 LBF. LEVER OPERATED, PUSH TYPE, AND ELECTRONICALLY CONTROLLED MECHANISMS ARE EXAMPLES OF ACCEPTABLE DESIGNS. SELF CLOSING VALVES ARE ALLOWED IF THE FAUCET REMAINS OPEN FOR AT LEAST 10 SECONDS.
- ALL TOILETS SHOWN ARE TO BE WALL MOUNTED W/ FLUSH VALVE. WHEELCHAIR ACCESSIBLE TOILETS SHALL HAVE THE FLUSH VALVE ACTIVATOR ON THE WIDE SIDE.
- DOORS FOR ENAMELED STEEL PARTITIONS TO BE MIN. 34" WIDE FOR WHEELCHAIR ACCESSIBLE STALLS AND 24" WIDE FOR STANDARD STALLS.
- THE DOOR LEADING INTO BOY'S FACILITY SHALL BE IDENTIFIED BY AN EQUILATERAL TRIANGLE 1/4" THICK WITH EDGES 12" LONG AND A VERTEX POINTING UPWARD. THE DOOR LEADING INTO GIRL'S FACILITY SHALL BE IDENTIFIED BY A CIRCLE 1/4" THICK AND 12" IN DIAMETER. UNISEX FACILITY SHALL BE IDENTIFIED BY A CIRCLE 1/4" THICK AND 12" IN DIAMETER WITH A 1/4" THICK TRIANGLE SUPERIMPOSED ON THE CIRCLE & WITH IN THE 12" DIAMETER. THE GEOMETRIC SYMBOLS SHALL BE CENTERED ON THE DOOR AT A HEIGHT OF 60" AND THEIR COLOR AND CONTRAST SHALL BE DISTINCTLY DIFFERENT FROM THE COLOR AND CONTRAST OF THE DOOR. (C.B.C. SECTION 115B.6)
- ALL INSULATION SHALL COMPLY W/ CALIFORNIA QUALITY STANDARDS & CALIFORNIA BUILDING CODE SECTION 719 CHAPTER 26 FOR FOAM INSULATION INCLUDING PIPE INSULATION. FLAME SPREAD MAX=25, SMOKE DENSITY MAX=450.
1. CEILING INSULATION TO BE R-19 FIBERGLASS
2. WALL INSULATION TO BE R-13 FIBERGLASS
3. FLOOR INSULATION TO BE R-11 RIGID CELLULAR BOARD
- THE MANUFACTURER SHALL PLACE TWO PERMANENT METAL IDENTIFICATION TAG ON EACH MODULAR BUILDING MECHANICALLY FASTENED TO THE END WALL. THE TAG SHALL SHOW D.S.A. APPLICATION NUMBER, MANUFACTURER'S SERIAL NUMBER, PLANT INSPECTOR'S IDENTIFICATION MARK AND DESIGN FLOOR AND ROOF LIVE LOAD. PLACE ONE TAG ON EXTERIOR AND ONE ON THE INTERIOR ABOVE CEILING LINE.

9 MATERIAL SPECIFICATIONS & NOTES

DIVISION OF THE STATE ARCHITECT

REV / DATE:

JOB No.:	12-119
DRAWN BY:	JM
DATE:	07-18-12

THIS MODULAR BLDG. HAS BEEN ENGINEERED BY A REGISTERED STRUCTURAL ENGINEER AND PREVIOUSLY REVIEWED & APPROVED BY THE DIVISION OF THE STATE ARCHITECT, FIRE & LIFE SAFETY AND ACCESS COMPLIANCE SECTION

CONFIDENTIAL MATERIAL--THESE DOCUMENTS ARE THE PROPERTY OF AND ARE NOT TO BE REPRODUCED OR DISTRIBUTED WITHOUT FULL KNOWLEDGE AND WRITTEN CONSENT FROM ENVIROPLEX, INC.
© COPYRIGHT ENVIROPLEX, INC. (ALL DRAWINGS PREPARED BY ENVIROPLEX, INC.)

APPROVALS

CYS
STRUCTURAL ENGINEERS INC.
1760 Creechside Oaks Dr., Suite 200
San Marcos, CA 92068
(916) 920-2020 (916) 920-1556 FAX
WWW.CYS-CA.COM

REGISTERED PROFESSIONAL ENGINEER
ARCHITECT/ENGINEER
No. 52030
EXP. 9/30/13
STRUCTURAL
STATE OF CALIFORNIA

THESE DRAWINGS ARE PRELIMINARY AND NOT FOR CONSTRUCTION UNLESS STAMPED & SIGNED BY THE ENGINEER OF RECORD.

ENVIROPLEX, INC.
4777 E. CARPENTER ROAD STOCKTON, CA. 95215, (209) 466-8000
11) 12'x40' RELOCATABLE RESTROOM BUILDINGS
FOR LA CANADA COLLEGE
SAI MATEO COMMUNITY COLLEGE DISTRICT

BOYS, GIRLS RESTROOM FLOOR PLAN, INTERIOR & EXTERIOR ELEVATIONS, MATERIAL SPECIFICATIONS, NOTES

A1