

Number Notes:

TOILET ROOM REMODEL PLAN - DET. #5, #8, #9 ONLY

- 1 (N) THICK SET PORCELAIN CERAMIC MOSAIC FLOOR TILE - SEE DET. -/ FOR PATTERN.
- 2 (N) 4 1/4" x 4 1/4" THICK SET CERAMIC WALL TILE - SEE DET. -/ FOR BASE.
- 3 (N) URINAL W/ AUTOMATIC FLUSH VALVE - MOUNT W/ RIM @ +24" A.F.F.
- 4 (N) URINAL W/ AUTOMATIC FLUSH VALVE - MOUNT W/ RIM @ +17" A.F.F.
- 5 (N) LAV. W/ TRAP GUARD & AUTOMATIC FAUCET - MOUNT W/ RIM @ +34".
- 6 (N) STANDARD HEIGHT WALL MTD. W.C. W/ AUTOMATIC FLUSH VALVE - MOUNT W/ TOP OF BOWL @ +15" A.F.F.
- 7 (N) ACCESSIBLE HEIGHT WALL MTD. W.C. W/ AUTOMATIC FLUSH VALVE - MOUNT W/ TOP OF SEAT @ +18" A.F.F.
- 8 (N) WALL MOUNTED URINAL SCREEN.
- 9 (N) FLOOR MOUNTED / CEILING BRACED TOILET PARTITION ROOM SCREEN.
- 10 (N) FLOOR MOUNTED / OVERHEAD BRACED TOILET STALL PARTITION W/ 55" HIGH PANELS @ +14" A.F.F. & HEAD RAIL @ +82".
- 11 (N) 18" LONG SHELF @ +54" A.F.F. TO TOP. A.S.I. #0690
- 12 (N) 18" LONG SHELF @ +45" A.F.F. TO TOP. A.S.I. #0690
- 13 (N) 18" LONG SHELF @ +30" A.F.F. TO TOP. A.S.I. #0690
- 14 (N) 18" LONG SHELF @ +36" A.F.F. TO TOP. A.S.I. #0690
- 15 (N) RECESSED PAPER TOWEL DISPENSER @ +42" A.F.F. TO BOTTOM OF UNIT. A.S.I. #9452
- 16 (N) SURFACE MOUNTED WASTE RECEPTACLE @ +33" A.F.F. TO TOP OF UNIT. A.S.I. #0828
- 17 (N) 18" x 30" MIRROR @ SHELF @ +75" A.F.F. TO TOP OF FRAME. A.S.I. #0625-A
- 18 (N) 18" x 36" MIRROR @ SHELF @ +75" A.F.F. TO TOP OF FRAME. A.S.I. #0625-A
- 19 (N) 42" x 36" MIRROR MOUNTED ON ROOM SCREEN PARTITION @ +75" A.F.F. TO TOP OF FRAME. A.S.I. #0690-A
- 20 (N) SURF. MOUNTED SOAP DISP. W/ OPERATING VALVE @ +40" MAX. A.F.F. A.S.I. #0342
- 21 (N) RECESSED PAPER TOWEL DISPENSER / WASTE RECEPTACLE - MOUNT @ +4" TO BOTTOM OF UNIT. A.S.I. #6462 SEE DET. -/
- 22 (N) RECESSED COMBINATION SEAT COVER & TOILET TISSUE DISPENSER - MOUNT BEHIND GRAB BAR W/ TOP OF UNIT @ +33" A.F.F. & W/ TISSUE ROLLS WITHIN 12" OF FRONT OF W.C. A.S.I. #0485
- 23 (N) SURF. MOUNTED DUAL TOILET TISSUE DISP. W/ TOP OF UNIT @ +29" A.F.F. A.S.I. #0030
- 24 (N) SURFACE MOUNTED SEAT COVER DISPENSER - W/ BOTTOM OF UNIT @ +48" A.F.F. A.S.I. #0477
- 25 (N) 42" LONG GRAB BAR - MOUNT W/ TOP OF BAR @ +33" A.F.F. & W/ FRONT OF BAR 24" MIN. IN FRONT OF W.C. A.S.I. #3800 - SEE DET. 7/A1.1
- 26 (N) 36" LONG GRAB BAR - MOUNT W/ TOP OF BAR @ +33" A.F.F. & W/ END OF BAR 6" MAX. FROM WALL CORNER. A.S.I. #3800 - SEE DET. 7/A1.1
- 27 (N) SURFACE MOUNTED SANITARY NAPKIN DISPOSAL W/ BOTTOM OF UNIT @ +18" A.F.F. A.S.I. #0892
- 28 (N) RECESSED COMBINATION SEAT COVER, TOILET TISSUE DISPENSER W/ SANITARY NAPKIN DISPOSAL MOUNT BEHIND GRAB BAR W/ TOP OF UNIT @ +43" A.F.F. & W/ TISSUE ROLLS WITHIN 12" OF FRONT OF W.C. A.S.I. #0482
- 29 (N) RECESSED TANDEM MOUNTED SANITARY NAPKIN / TAMPON DISPENSER & DISPOSAL - MOUNT W/ UNIT BOTTOM @ +14 5/8" A.F.F. & OPERATING CONTROLS @ +40" MAX. A.F.F. A.S.I. #04684-TM
- 30 (N) CER TILE @ (E) CONC. COL. - SEE DET. -/
- 31 (N) S.S. ACCESS PANEL - SEE PLUMBING PLAN FOR LOCATION & SIZE.
- 32 (N) FLOOR DRAIN CONNECTED TO (E) DRAIN LINE - SEE PLUMBING PLAN.
- 33 (N) HOSE BIB - SEE PLUMBING PLAN.

Numbered Notes:

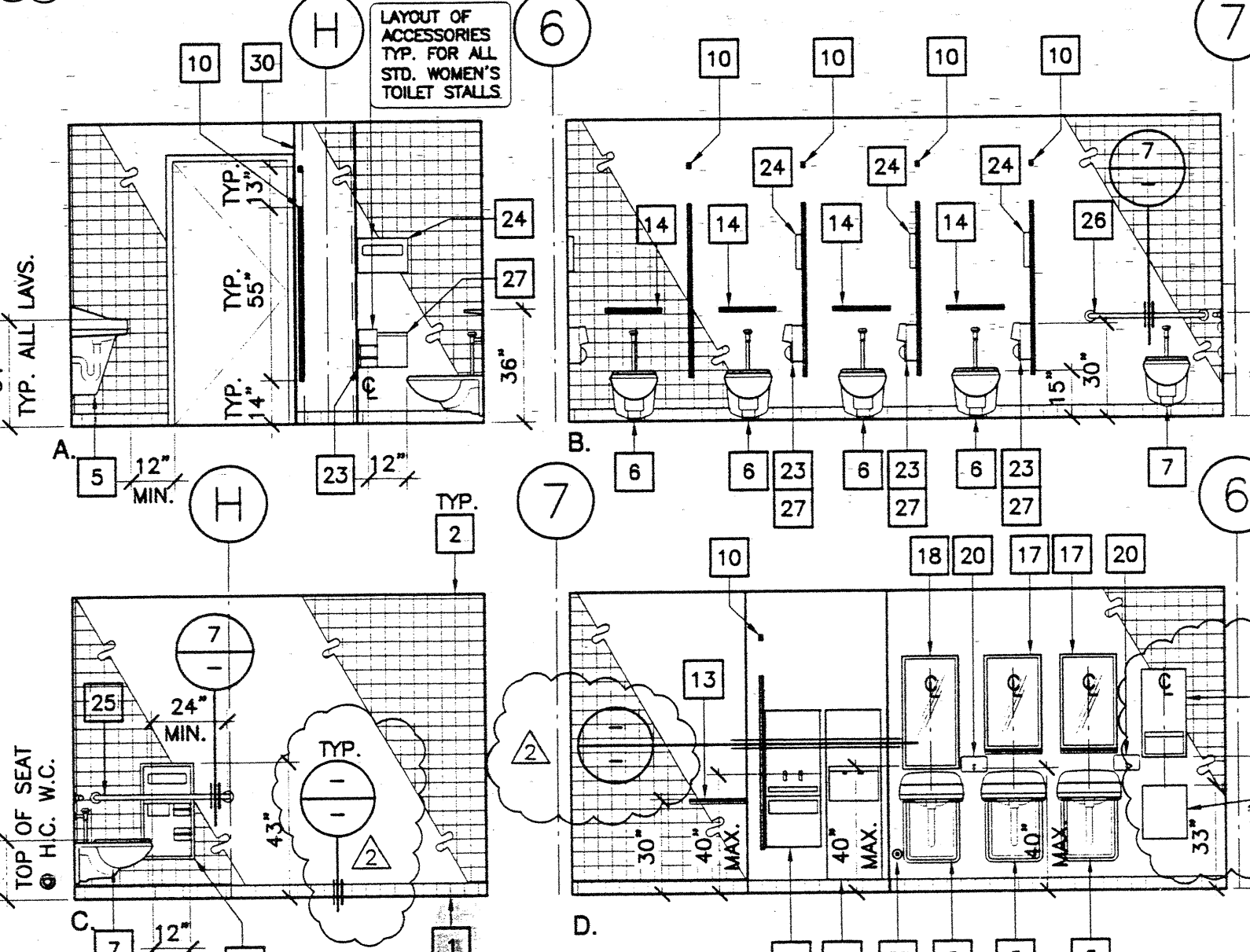
TOILET ROOM DEMOLITION PLAN - DET. #5 ONLY

- 1 REMOVE (E) TOILET STALL PARTITIONS, FIXTURES & ACCESSORIES.
- 2 REMOVE (E) CERAMIC WALL TILE, SETTING BED & METAL LATH.
- 3 REMOVE (E) CERAMIC FLOOR TILE, BASE & SETTING BED.
- 4 REMOVE (E) FLOOR DRAIN STRAINER & BODY.
- 5 REMOVE (E) WALL PLASTER & LATH.
- 6 REMOVE (E) MARBLE THRESHOLD.
- 7 REMOVE (E) WOOD DOOR & HOLLOW METAL FRAME.
- 8 REMOVE (E) NON-BEARING METAL STUD PARTITION OR METAL STUD FURRING.
- 9 REMOVE (E) VINYL COMPO. FLOOR TILES & RUBBER BASE.
- 10 REMOVE PORTION OF (E) METAL STUD & PLASTER PARTITION FOR NEW DOOR.
- 11 (E) RAIN WATER LEADER TO REMAIN.
- 12 (E) ELECTRICAL CHASE TO REMAIN.
- 13 REMOVE (E) RECESSED LIGHT FIXT. & H.V.A.C. GRILLES.
- 14 REMOVE (E) GYP. BD. CLG. & SUSPENSION SYSTEM.

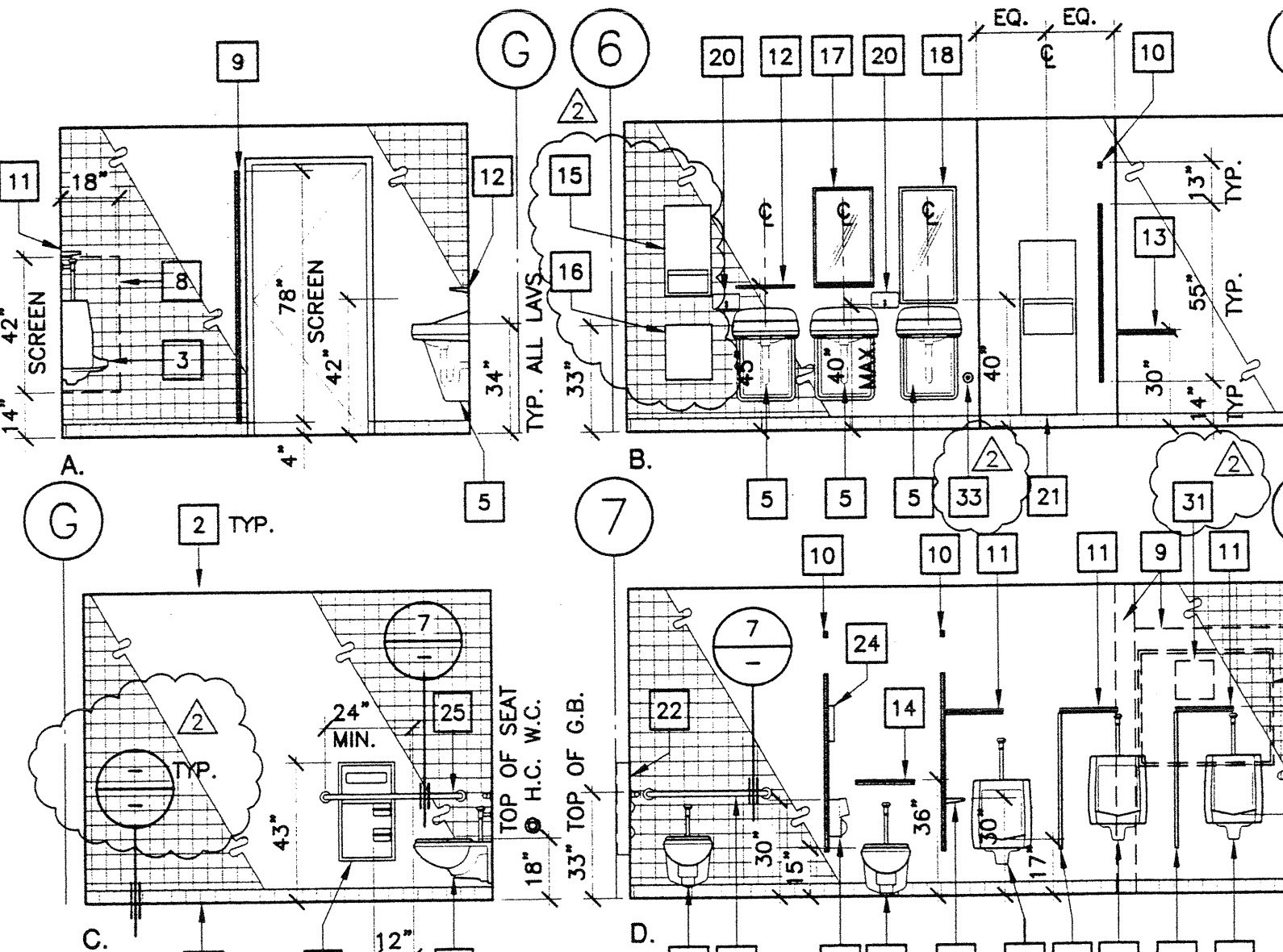
Numbered Notes:

DETAILS #1, #2, #3, #4 ONLY

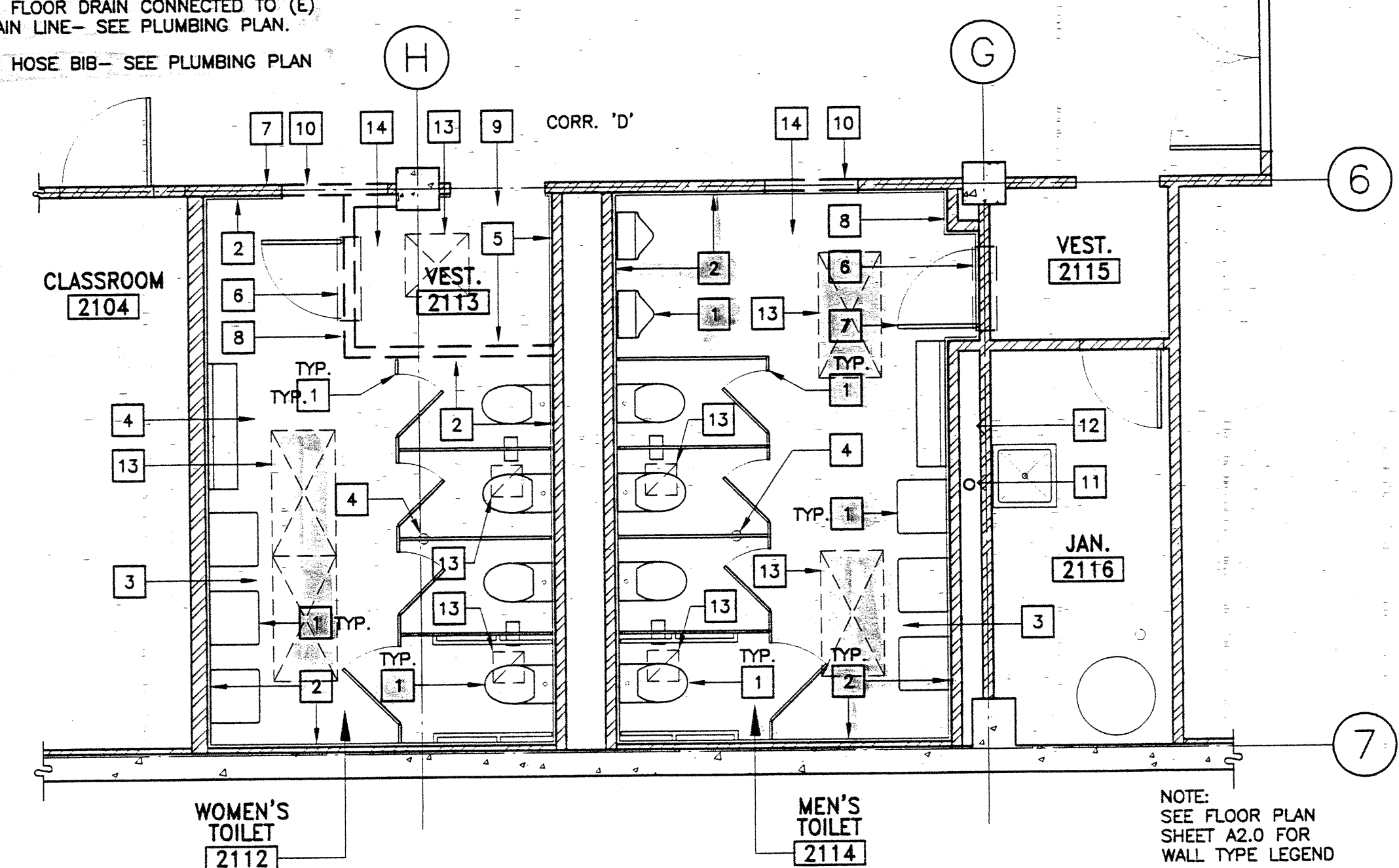
- 1 (E) A.C. PAVING - SAWCUT FOR (N) WORK.
- 2 REMOVE (E) DOCK BUMPERS AND LOADING/UNLOADING SIGN - SALVAGE BUMPERS FOR REINSTALLATION.
- 3 REMOVE (E) STEEL FRAMES & CONC. STAIRS & (E) STEEL HANDRAIL.
- 4 FACE OF (E) SERVICE DOCK.
- 5 (N) CONC. SERVICE DOCK EXTENSION.
- 6 (N) SLOPING CONC. WALK.
- 7 (N) CONC. STAIRS W/ SAFETY NOSING @ EACH TREAD.
- 8 (N) GALV. STEEL GUARDRAIL 42" ABOVE WALKING SURFACE.
- 9 (N) GALV. STEEL HANDRAIL 36" ABOVE WALKING SURFACE & STAIR NOSINGS.
- 10 5" STD. PIPE BOLLARD.
- 11 HINGED GUARDRAIL SECTIONS.
- 12 (E) CONC. WALK.
- 13 (N) CONC. WALK AREA.
- 14 (N) LOADING/UNLOADING SIGN.
- 15 RELOCATED (E) DOCK BUMPERS.
- 16 (N) A.C. PAVING - SLOPE W/ STRAIGHT GRADE TO MEET (E) A.C. PARKING AREA & (E) CONC. WALK.
- 17 (N) 1 3/4" x 3/4" GALV. STL. BAR HANDRAIL EXTENSIONS WELD TO & MATCH (E) @ 2 EXTERIOR STAIRS ON NORTH & SOUTH END OF BLDG.



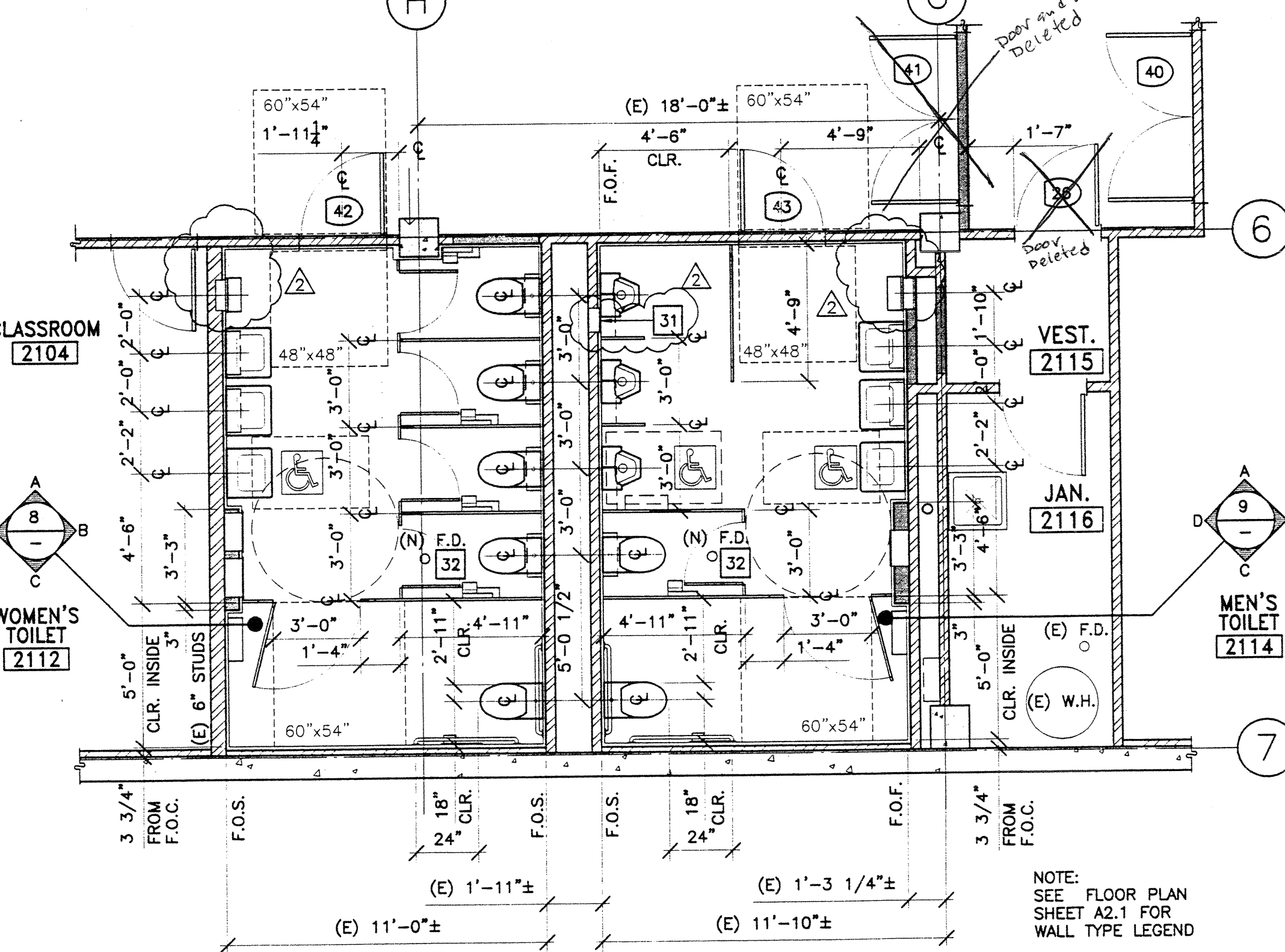
8 Remodeled Women's Toilet Room
SCALE: 1/4" = 1'-0"



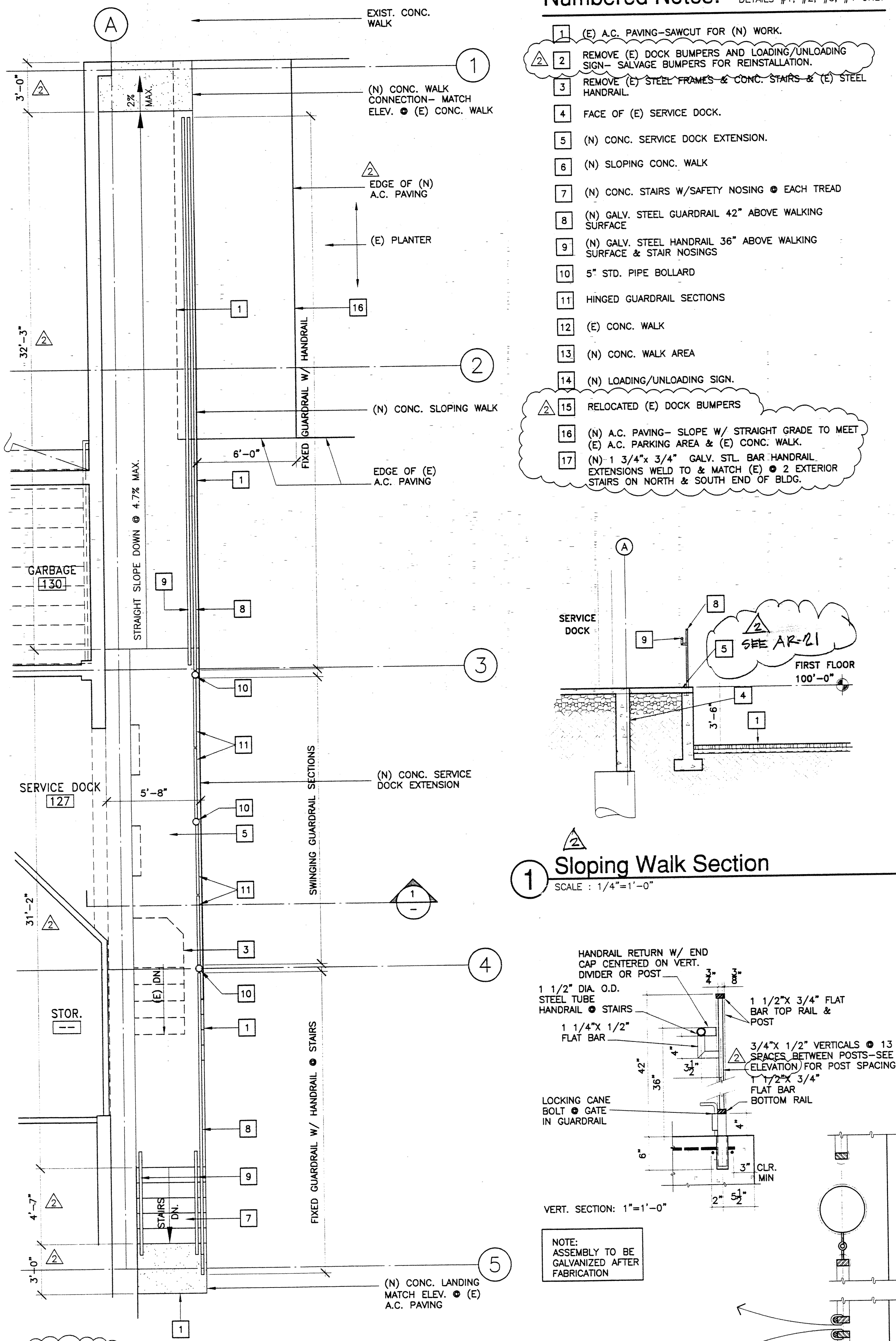
9 Remodeled Men's Toilet Room
SCALE: 1/4" = 1'-0"



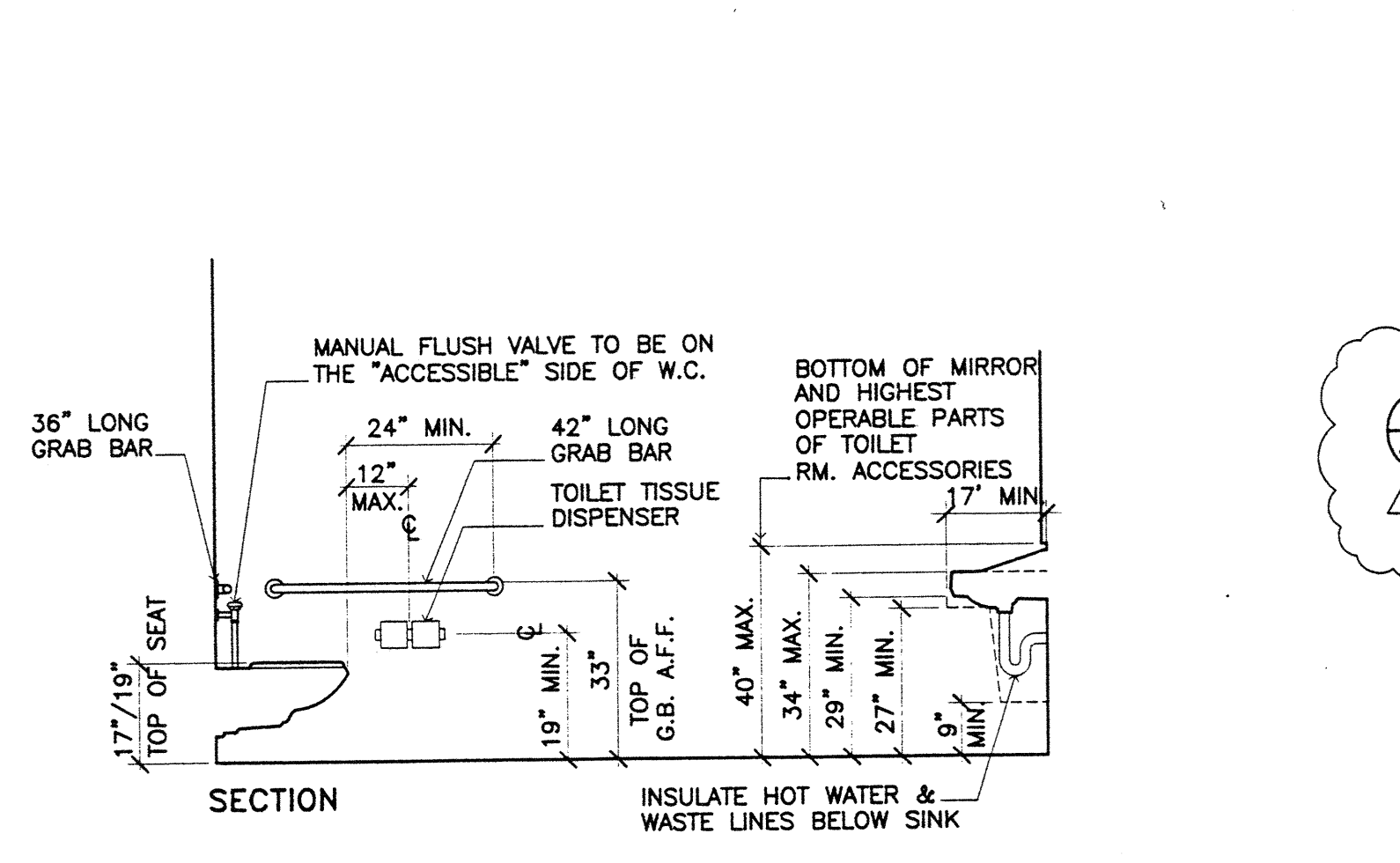
5 Toilet Room Demolition Plan
SCALE: 1/4" = 1'-0"



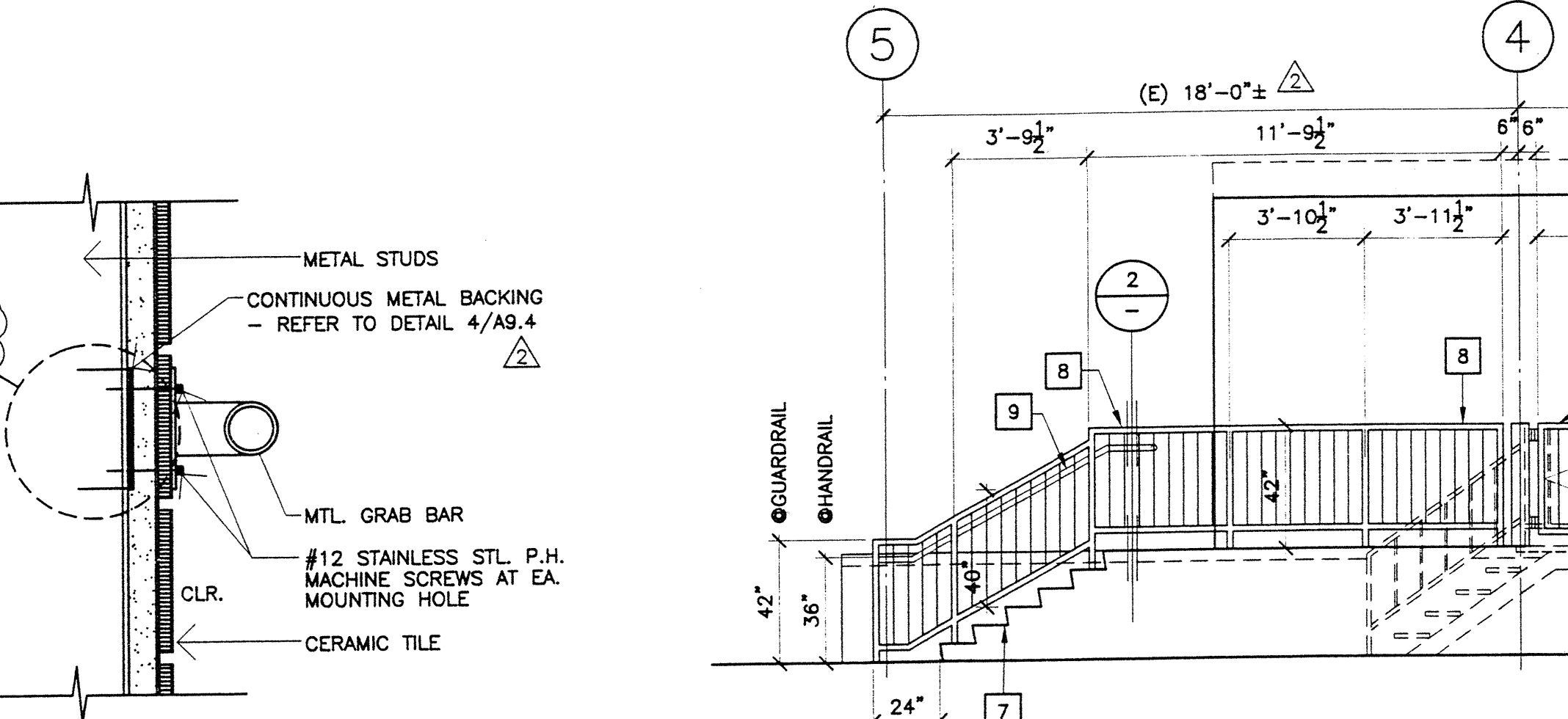
6 Toilet Room Remodel Plan
SCALE: 1/4" = 1'-0"



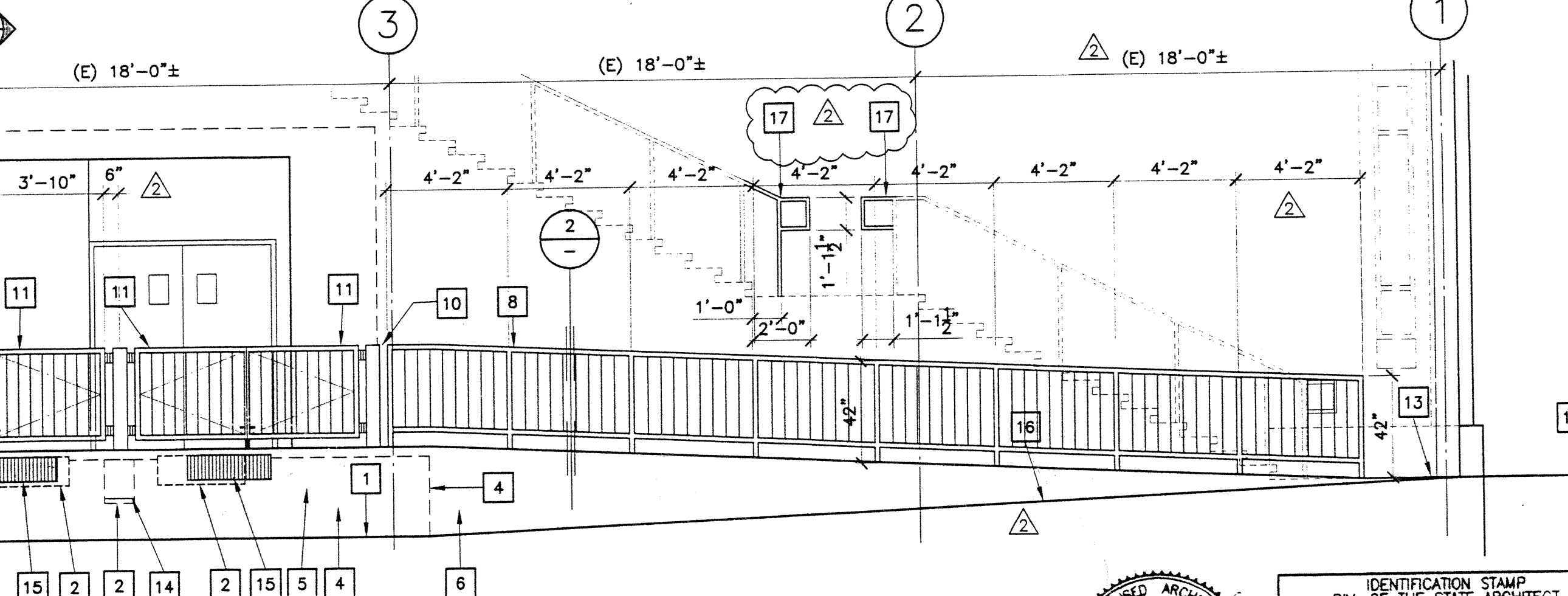
3 Sloping Walk Plan SCALE: 1/4" = 1'-0"
2 Slicing Walk Section SCALE: 1/4" = 1'-0"



10 Accessible Toilet Room
SCALE: 3/8" = 1'-0"



7 Grab Bar Mounting - Typical
SCALE: 3" = 1'-0"



4 Sloped Walk Elevation
SCALE: 1/4" = 1'-0"

KRUGER BENSON ZIEMER ARCHITECTS, INC.
30 W. ARRELAGA, SANTA BARBARA, CA 93101
805/963.1726

STEVE DOWDY, A.I.A.
PRINCIPAL IN CHARGE

GERALD SHUSTA
PROJECT ARCHITECT

All design, construction and plans indicated or represented by this drawing are owned by the property of Kruger-Benson-Ziemer, Inc. and shall not be used, copied, revised or developed for use on, and in connection with, the specified project. Plans of such design, construction or plans shall not be used for any other project without the written permission of Kruger-Benson-Ziemer.

CENTER FOR ADVANCED LEARNING TECHNOLOGY
SKYLINE COLLEGE
SAN MATEO COUNTY COMMUNITY COLLEGE DISTRICT
SAN BRUNO, CALIFORNIA 94066
3300 COLLEGE DRIVE

ASBUILTS

REVISION	DESCRIPTION	DATE	BY
ADDENDUM #2		11-20-01	GS
BID SET REVISIONS		10-25-01	GS

DRAWN	G.S.
CHECKED	S.D.
DATE	3/21/01
JOB NO.	98-03
SHEET TITLE	SLOPING WALKWAY TOILET ROOM REMODEL

IDENTIFICATION STAMP
DIV. OF THE STATE ARCHITECT
OFFICE OF REGULATION SERVICES
APPL. 01-103735
Ren. 11/01
DATE 02/27/01

SHEET 4
A 1.1
OF 21