

CODE ANALYSIS:

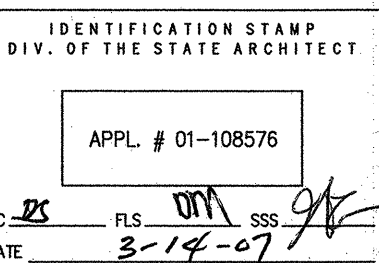
BUILDING USE, OCCUPANCY, AND CONSTRUCTION	
ASSESSOR'S PARCEL NUMBER:	N/A (PART OF CAMPUS)
PARCEL SIZE:	N/A (PART OF CAMPUS)
EXISTING NUMBER OF STORIES:	3
EXISTING FIRE SPRINKLERS:	NONE
OCCUPANCY GROUP:	B
CONSTRUCTION TYPE:	TYPE II F.R.
AREA OF WORK: ROOM 2111: ROOM 2108:	1,340 S.F. 980 S.F.

CODE SUMMARY

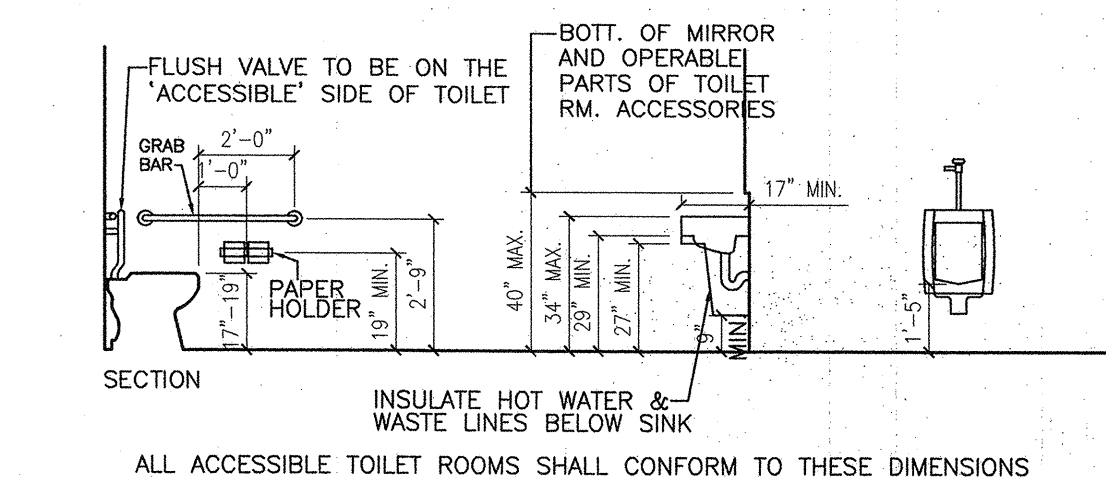
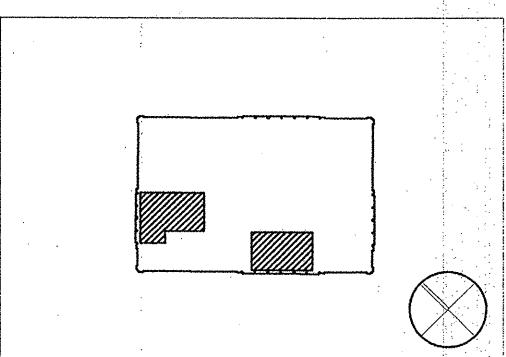
TABLE 10-A	MINIMUM OF TWO MEANS OF EGRESS REQUIRED IN ROOMS WITH OCC. LOAD OF 50 OR MORE.
ADDITIONAL NOTES	1. OCCUPANT LOADS INDICATED ON THIS DRAWING ARE SOLELY FOR THE PURPOSE OF VERIFYING EGRESS REQUIREMENTS BY CODE. THESE LOADS ARE NOT INTENDED TO CONVEY STAFFING NUMBERS. 2. OCCUPANT LOADS ARE INDICATED FOR EACH AREA UNLESS OTHERWISE NOTED.

LEGEND

- (E) 1-HR FIRE RATED CORRIDOR
PROVIDE:
1. FIRE STOPPING AT PIPE AND DUCT PENETRATIONS
2. FIRE/SMOKE DAMPERS AT DUCT PENETRATIONS
3. SMOKE SEALS AT DOORS
- INDICATED EXIT
- OCCUPANTS
AREA/OCCUPANT LOAD FACTOR
MIN. EXIT REQUIRED
- AREA OF WORK
- 5'-0" TURNING SPACE
- 30" MIN. X 48" MIN. CLEAR FLOOR SPACE



02.02.07	DSA SUBMITTAL	
03.14.07	DSA BACKCHECK	
rev.	date	issue



1 BUILDING CODE ANALYSIS & EXISTING DIAGRAM
1/8" = 1'-0"

2 (E) ACCESSIBLE TOILET ROOM
1/4" = 1'-0"