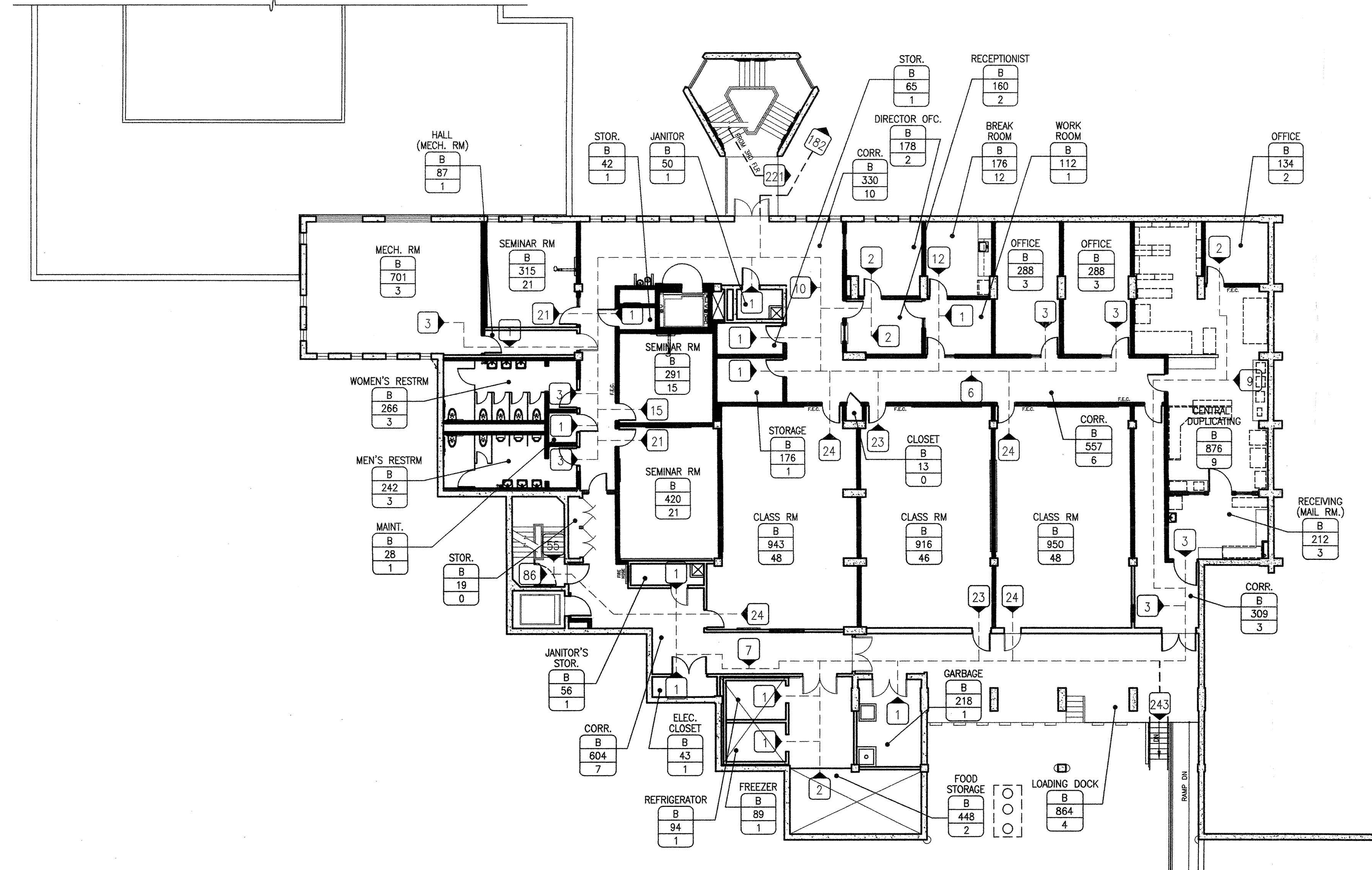
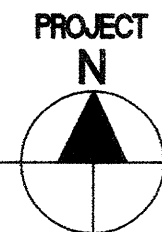
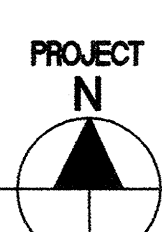


**FIRST FLOOR EXITING PLAN**  
N.T.S. 1



**SECOND FLOOR EXITING PLAN**  
N.T.S. 2

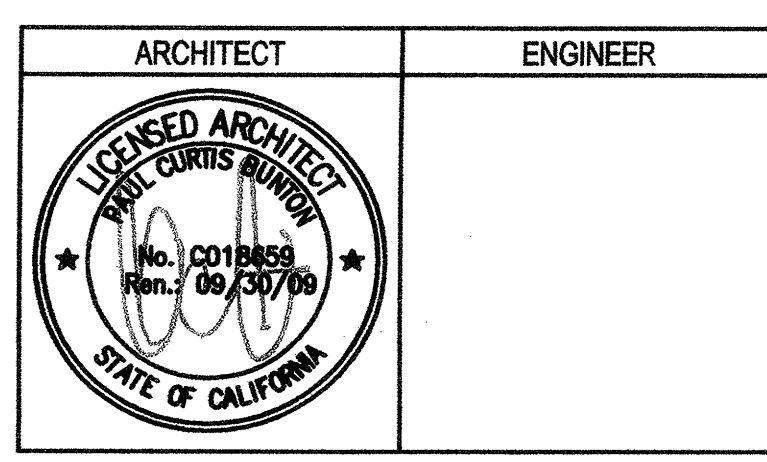


**GENERAL NOTES**

- OCCUPANT LOAD FACTORS ARE ACCORDING TO CBC SECTION 1004, TABLE NO. 1004.1.1.
- SHAFT AREA EXCLUDED FROM GROSS FLOOR AREA (CBC 1002).
- WHERE OCCUPANT LOAD SIGN IS REQUIRED THE ROOM SHALL BE POSTED WITH A SIGN NEAR THE MAIN EXIT FROM THE ROOM. REFER TO SIGNAGE SCHEDULE FOR DETAIL (CBC 1004.3).
- COMMON PATH OF EGRESS TRAVEL IS 75' MAX. (CBC 1014.3).
- MAX ENTRANCE TRAVEL DISTANCE FROM ANY POINT IN AN OCCUPIED SPACE IS 200' (CBC TABLE 1016.1 FOR NON-SPRINKLERED BUILDINGS).

**BC|A**  
architecture  
planning  
interiors

Bunton Clifford Associates, Inc.  
210 Hammond Ave.  
Fremont, California 94539  
[T] 510.445.1000  
[F] 510.445.1005  
www.BCAincOnline.com



- This sheet is part of a set and is not to be used alone.
- This sheet is not to be used for construction unless the architect's stamp and signature appear on the drawings and the status box indicates drawings have been released for construction.
- These plans and prints thereof, as instruments of service, are owned by the architect and are for use on this project only. Reproduction and/or distribution without the prior written consent of the architect is forbidden.
- Copyright Bunton Clifford Associates, 2007

REVISION	DATE

**EXIT PLAN LEGEND**

- AREA IDENTITY/CODE ANALYSIS**
- LOBBY = ROOM NAME  
B = OCCUPANCY GROUP  
900 = FLOOR AREA - SQUARE FEET  
45 = OCCUPANT LOAD (CBC TABLE 10-A)  
• = OCCUPANT LOAD SIGN REQUIRED WHEN NOTED - SEC 1004.3 - REF SIGNAGE SCHEDULE
- AREA OF 1 HR FIRE RESISTIVE CORRIDOR CONSTRUCTION - SEC 1005
- 1 PATH OF EGRESS - 1 = CUMULATIVE OCCUPANT LOAD
- EXIT SIGN - REF ELEC
- PANIC HARDWARE DEVICE - REF DOOR SCHED AND HARDWARE GROUP

**OCCUPANT LOAD SCHEDULE**

SPACE USE	OCCUPANT LOAD FACTOR SF / OCCUPANT
ACCESSORY STORAGE AREAS, MECHANICAL EQUIPMENT ROOM	300 GROSS
ASSEMBLY WITHOUT FIXED SEATS UNCONCENTRATED (TABLES & CHAIRS) CONCENTRATED (CHAIRS NOT FIXED)	15 NET 7 NET
BUSINESS AREAS	100 GROSS
EDUCATIONAL CLASSROOM AREA	20 NET
KITCHENS, COMMERCIAL	200 GROSS
MERCANTILE (SERVERY)	30 GROSS

DATE: 08/29/08

FILE NO. 41-C1

IDENTIFICATION STAMP

01-110074

DATE: MAR 3 9 2008

**BUILDINGS 5 & 6 RENOVATIONS**  
San Mateo County Community College District

DSA SUBMITTAL

**CAÑADA COLLEGE**  
4200 Farm Hill Boulevard  
Redwood City, CA 94061

FIRST & SECOND FLOOR EXITING PLANS