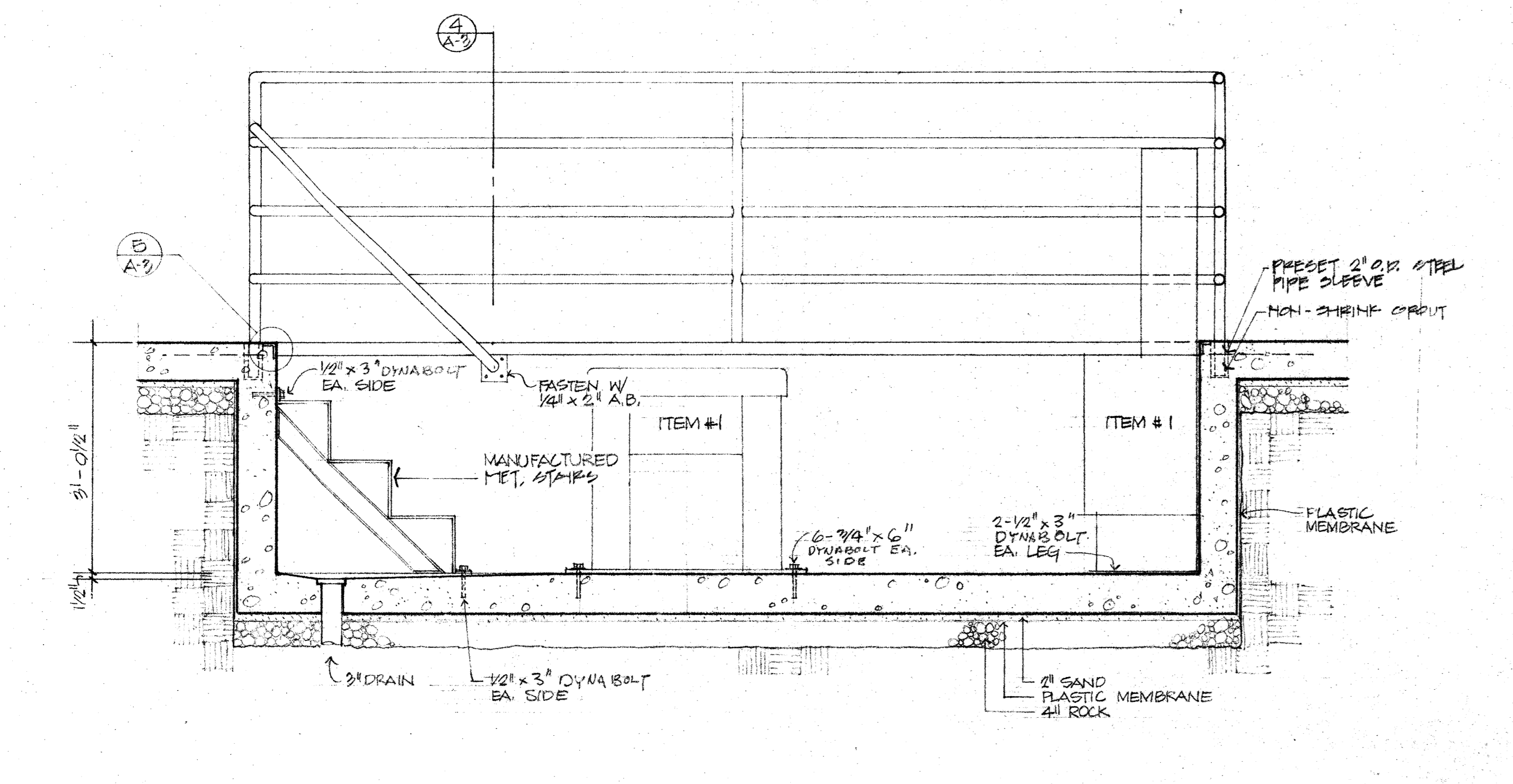


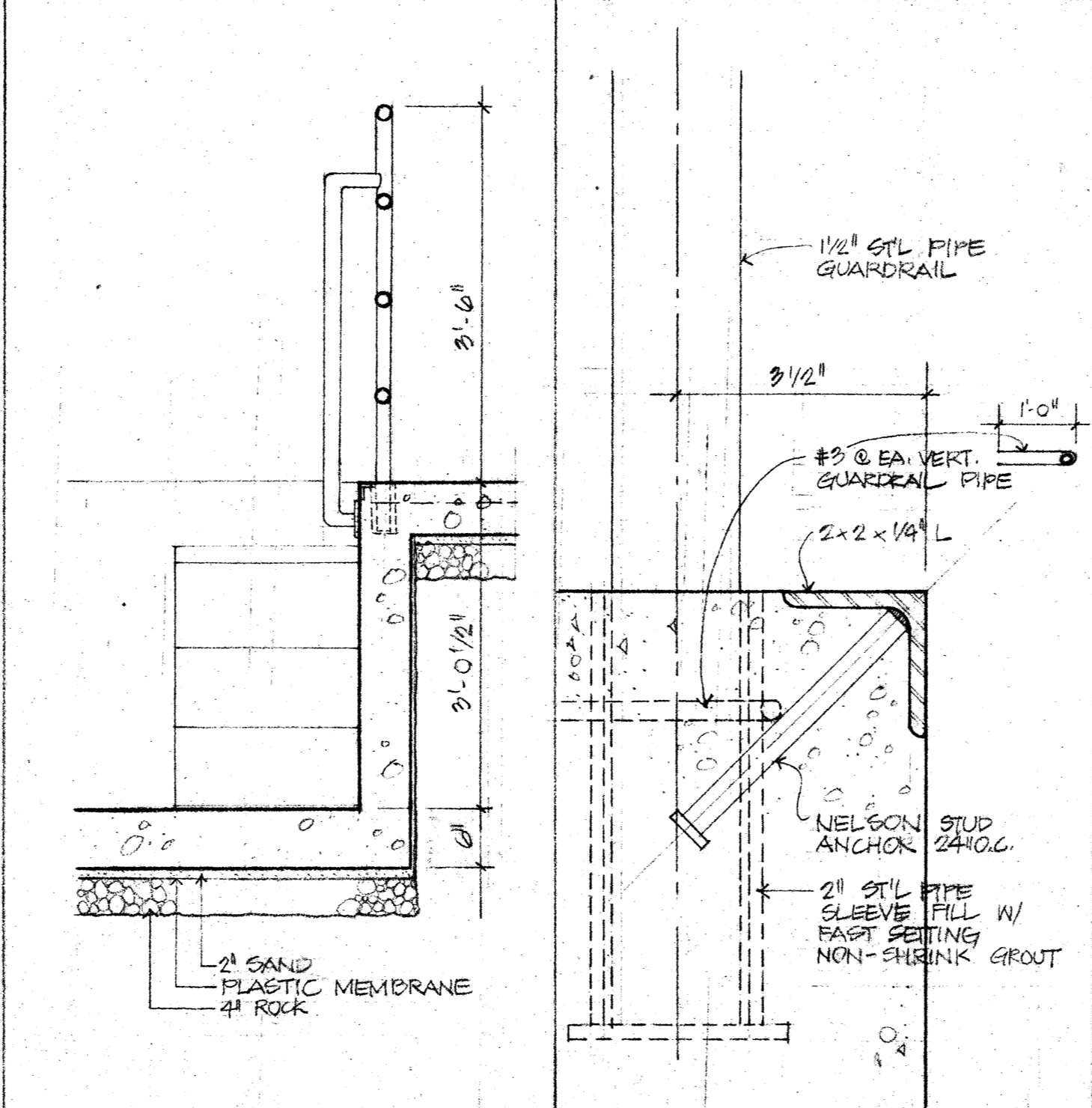
SECTION 6 ITEM # 3, TWIN POST HOIST INSTALLATION 1/2" = 1'-0" 1

LONGITUDINAL SECTION AND INTERIOR ELEVATION

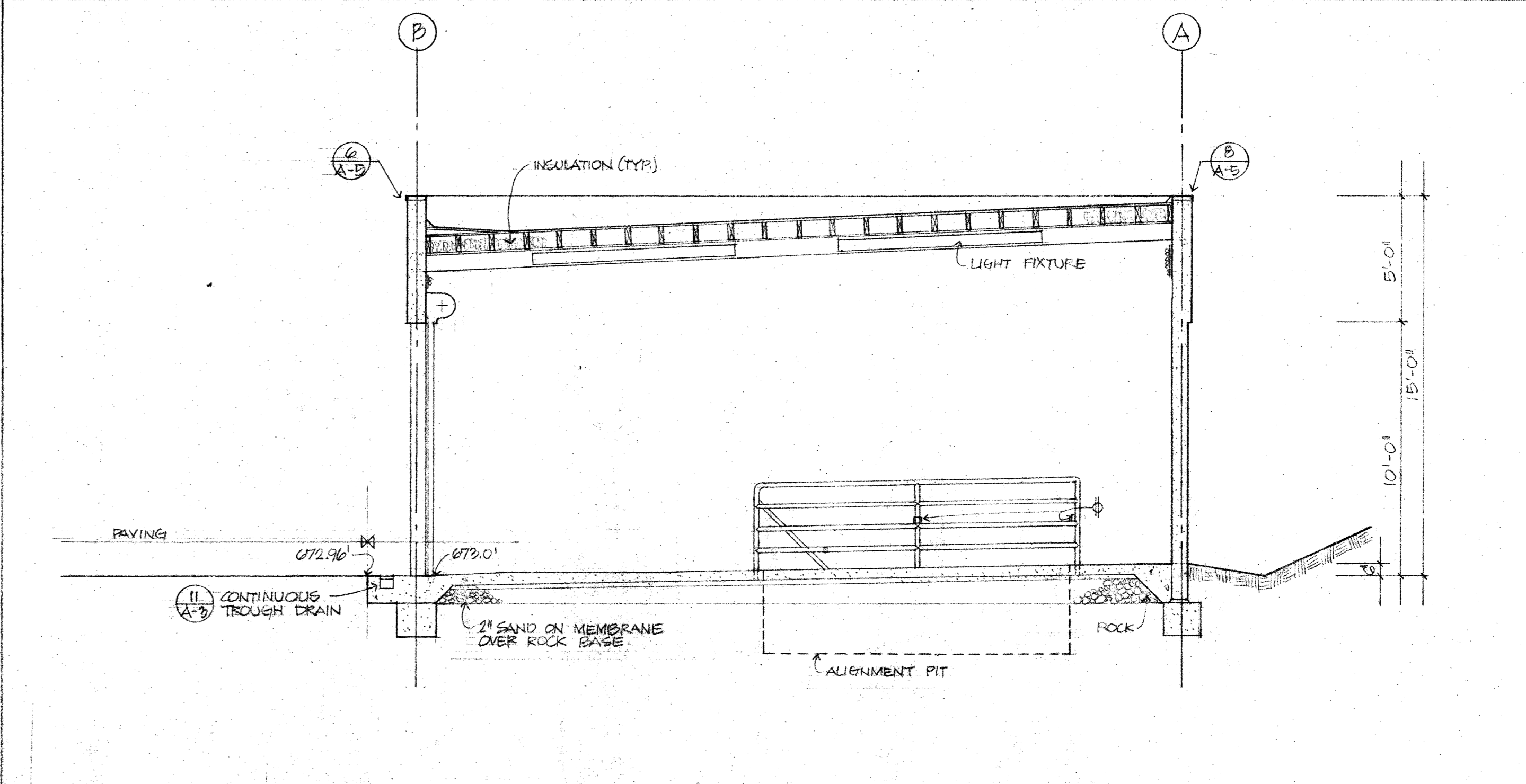
SCALE: 1/4" = 1'-0" 2



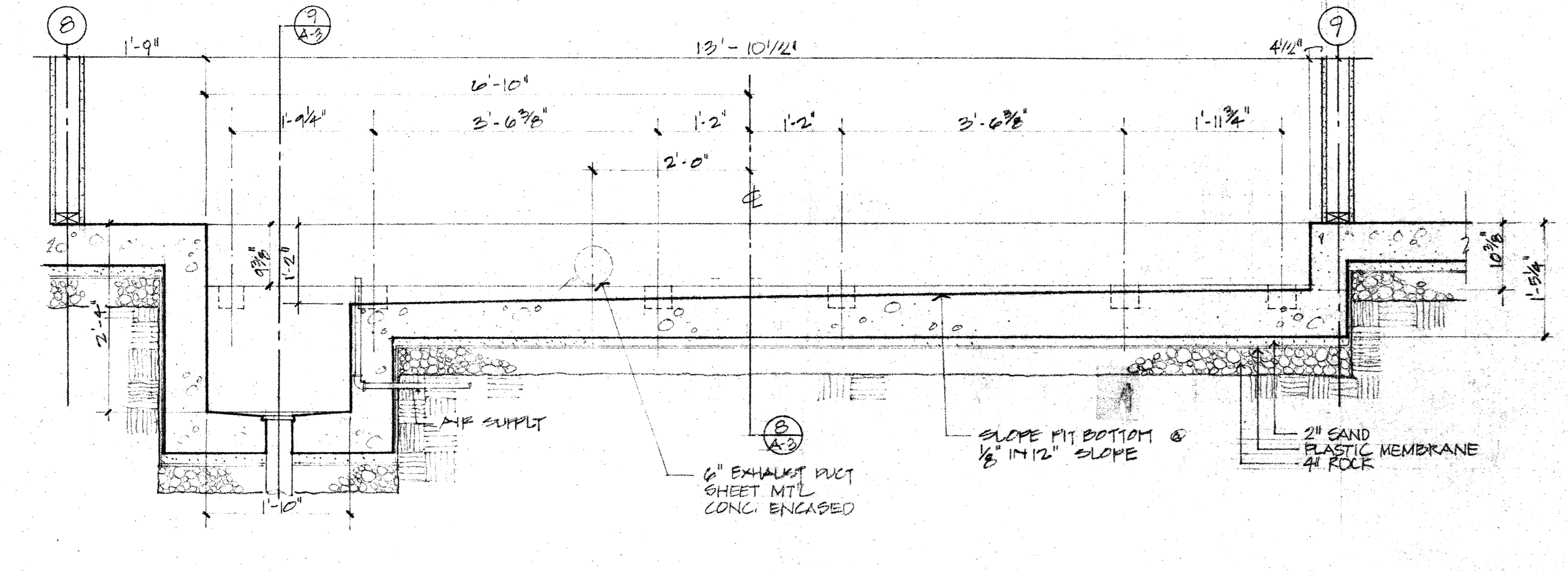
CROSS SECTION ALIGNMENT PIT 3/4" = 1'-0" 3



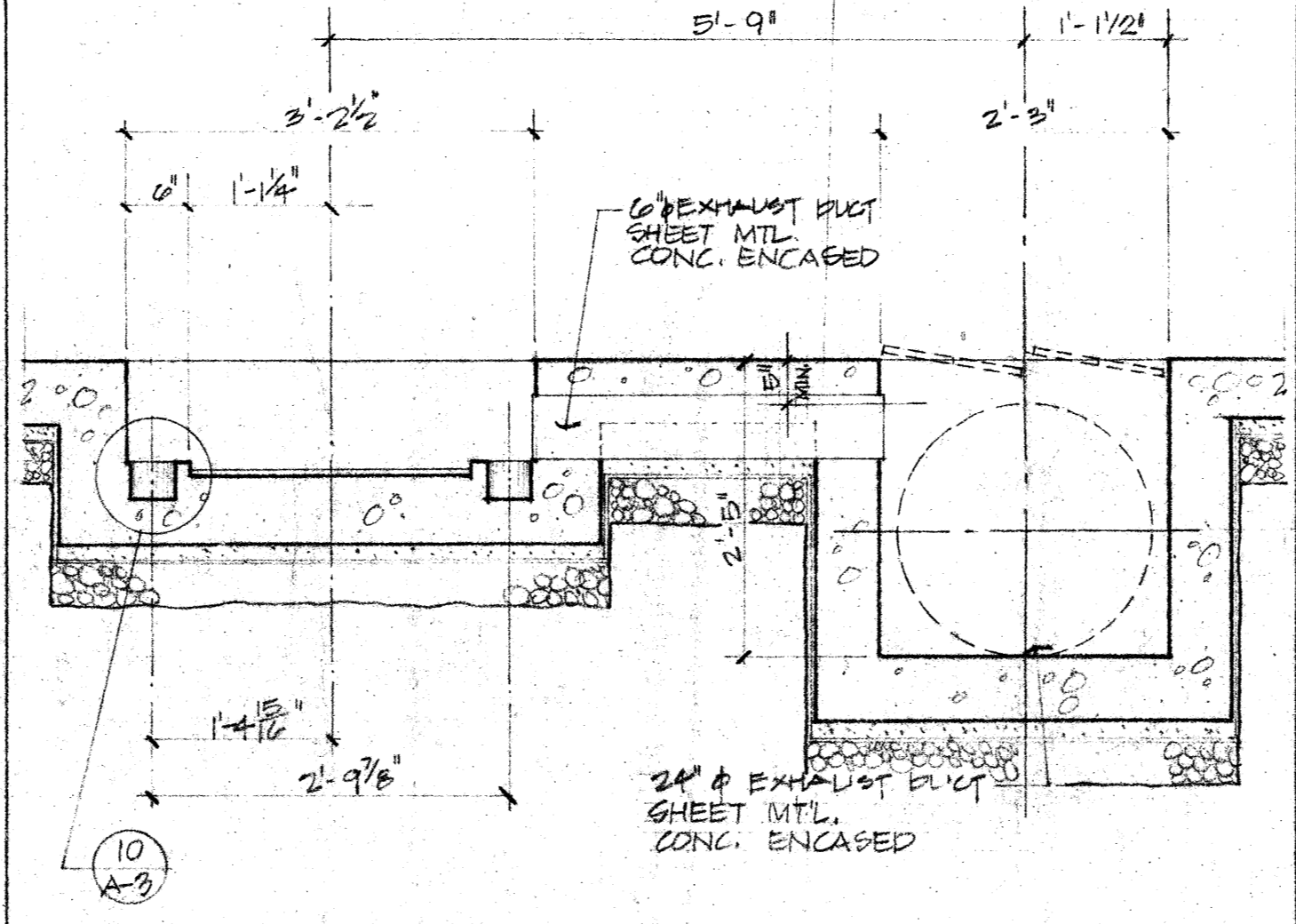
SECTION GUARDRAIL AT ALIGNMENT PIT 3/4" = 1'-0" 4



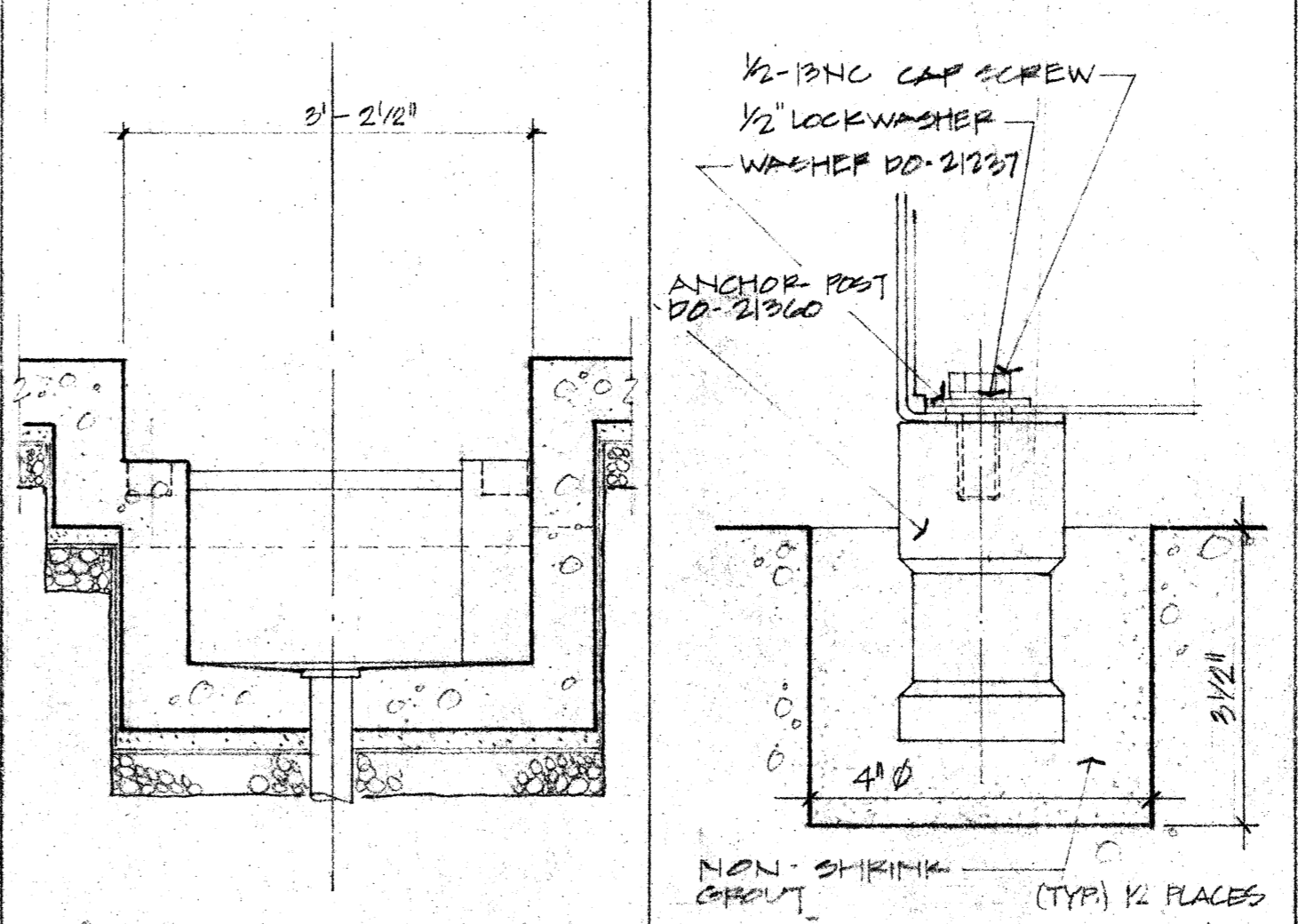
GROSS SECTION AND INTERIOR ELEVATION 3/4" = 1'-0" 6



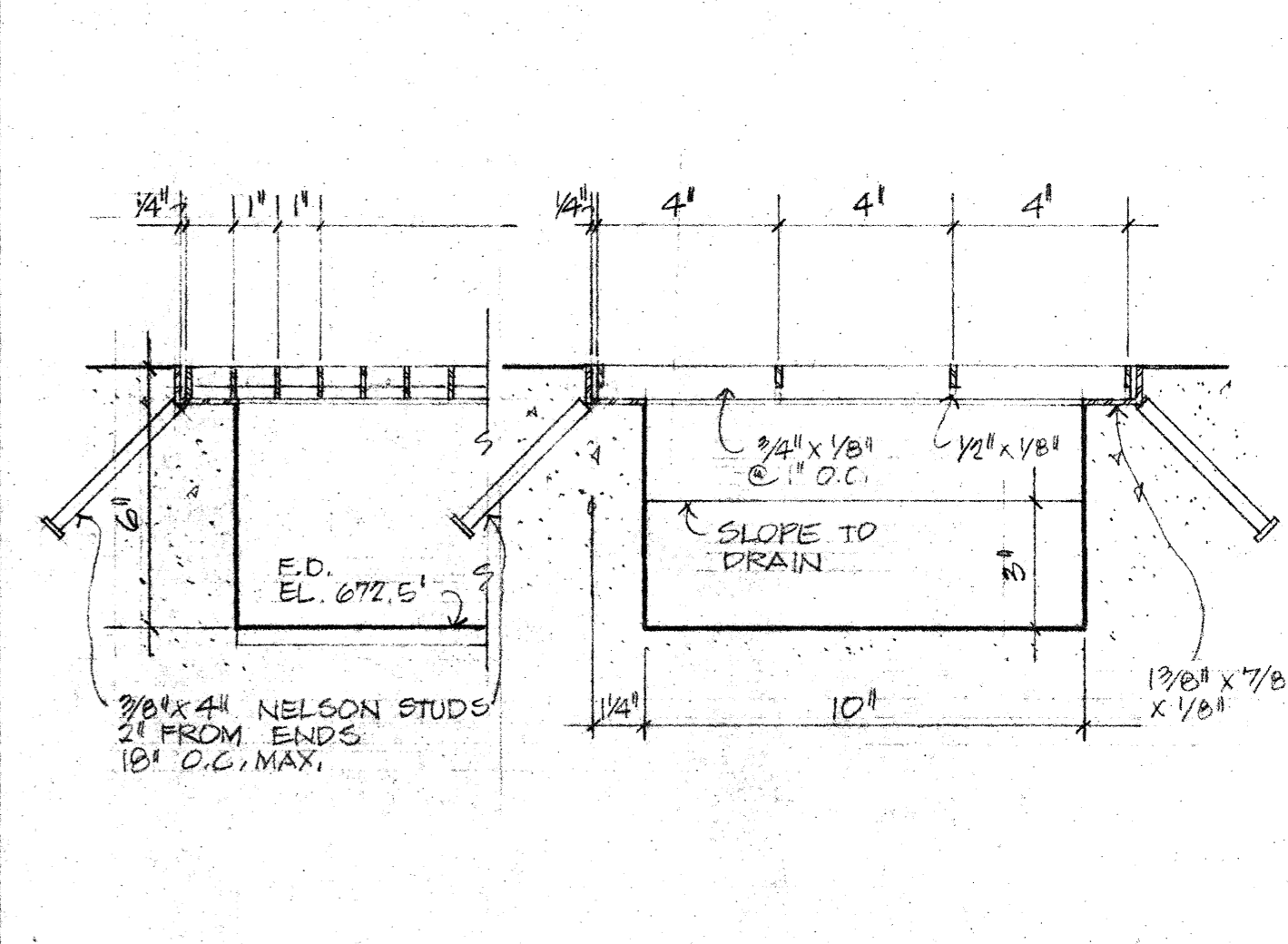
LONGITUDINAL SECTION DYNAMOMETER PIT 3/4" = 1'-0" 7



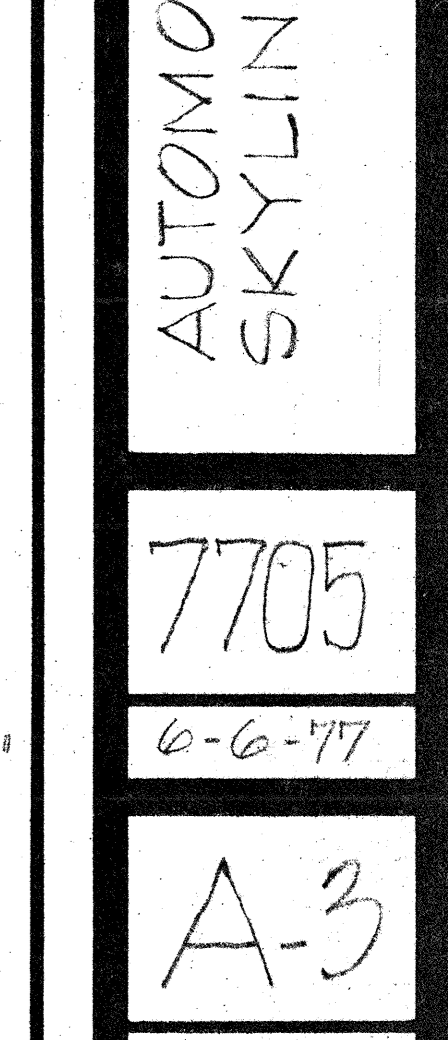
CROSS SECTION DYNAMOMETER PIT AND EXHAUST DISPOSAL PIT 3/4" = 1'-0" 8



CROSS SECTION DYNAMOMETER PIT 3/4" = 1'-0" 9



DETAIL ANCHOR POST HALF SCALE 3" = 1'-0" 10



SECTIONS CONTINUOUS TROUGH DRAIN 3" = 1'-0" 11

APPROVED  
 KELLER AND DASEKING • ARCHITECTS  
 WALTER L. KELLER A.I.A.  
 WILLIAM H. DASEKING A.I.A.  
 825 OAK GROVE AVENUE  
 MENLO PARK, CALIFORNIA

Walter L. Keller  
 K D

40530  
 6-6-77

AUTOMOTIVE SHOP  
 SKYLINE COLLEGE

7705  
 6-6-77  
 A-3  
 3 OF 12