



SAN MATEO COUNTY
COMMUNITY
COLLEGE DISTRICT

FACILITIES PLANNING,
MAINTENANCE & OPERATIONS

“Facilities Excellence”

Bond Oversight Committee CIP Project Update

June 2, 2016

“Facilities Excellence”

College of San Mateo

Softball Field Turf Replacement

- ▶ Budget \$492,300
 - ▶ Redevelopment Funds; Fund 4 Unrestricted Funds
- ▶ Project Scope
 - ▶ Replacement of entire softball field synthetic turf
 - ▶ Refurbish pitchers mound and batters box
 - ▶ Replace Bull Dog logo
 - ▶ Install new concrete curb to retain clay at batting cages
- ▶ Schedule
 - ▶ Construction in progress; Completion late July 2016

College of San Mateo Softball Field Replacement



College of San Mateo

Marie Curie Parking Lot Repairs

- ▶ Budget \$439,000
 - ▶ Measure A
- ▶ Project Scope
 - ▶ Resurfacing Marie Curie Parking Lot
 - ▶ Repairing tree planters from root growth
 - ▶ Installing infrastructure for Electric Vehicle charging stations
 - ▶ Restriping Socrates Parking Lot
 - ▶ Changing speed bumps to comply with City of San Mateo fire department standards with cut outs for fire trucks
- ▶ Schedule
 - ▶ Construction in progress; Completion late August 2016

College of San Mateo Marie Curie Parking Lot Repairs



▶ "Facilities Excellence"

Cañada College Kinesiology and Wellness Building (B1N)

- ▶ **Budget \$88,000,000**
 - ▶ Measure H
- ▶ **Project Scope**
 - ▶ Construct a New 84,500 GSF Wellness and Kinesiology Building (B1)
 - ▶ Elements of the Program: Separate enterprise and student locker and shower facilities, basketball gym, dance studios, entrance lobby, offices, outdoor competition and instructional swimming pools
- ▶ **Status**
 - ▶ Design Build Entity Selection in progress; SOQ received June 2nd; RFP release June 20th.
- ▶ **Schedule**
 - ▶ Construction start in Q1 2018; Completion Q3 2019

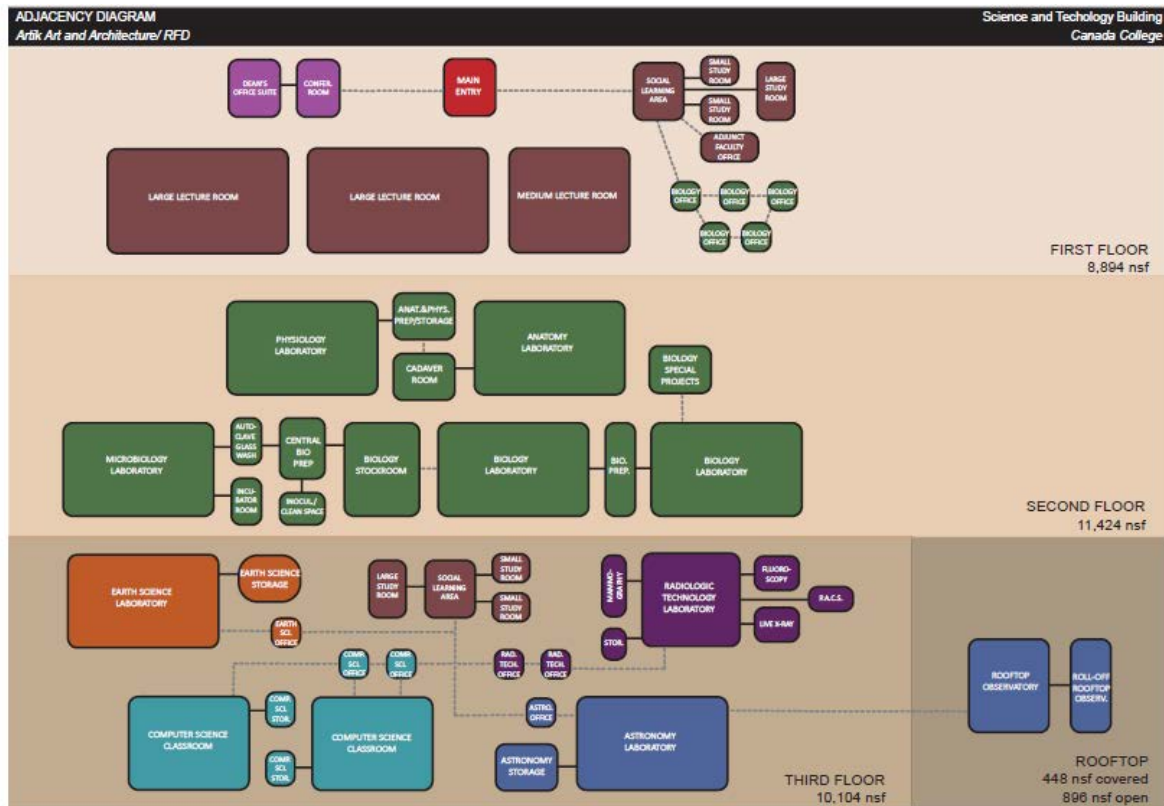
Cañada College Kinesiology and Wellness Building (B1N)



Cañada College Math and Science Building (B23N)

- ▶ **Budget \$55,300,000**
 - ▶ Measure H
- ▶ **Project Scope**
 - ▶ Construct a New 48,000 GSF Math and Science Building (B23)
 - ▶ Elements of the Program: Classrooms, Science Laboratories and Lab Prep Spaces, Large and Medium Lecture Halls, Offices
- ▶ **Status**
 - ▶ Programming complete
 - ▶ DBE selection process begins August, 2016
- ▶ **Schedule**
 - ▶ Construction start in Q3 2018; Completion Q1 2020

Cañada College Math and Science Building (B23N)



College of San Mateo Theatre Modernization (B3)

- ▶ Budget \$12,200,000
 - ▶ Measure H
- ▶ Project Scope
 - ▶ Interior modernization of building, focused on replacing aging mechanical, electrical and plumbing building infrastructure of existing Building (B3) 28,000 GSF
 - ▶ Modernize areas and features as required to provide ADA access to the building, including the lower stage, seating and back of stage areas
 - ▶ Modernize interior areas of the building, including dressing rooms, restrooms, rehearsal and back of stage rooms
 - ▶ Modernize Theatre audio/visual, acoustical and lighting systems as allowed by the budget
- ▶ Schedule
 - ▶ Construction start Q3 2017; Completion Q3 2018

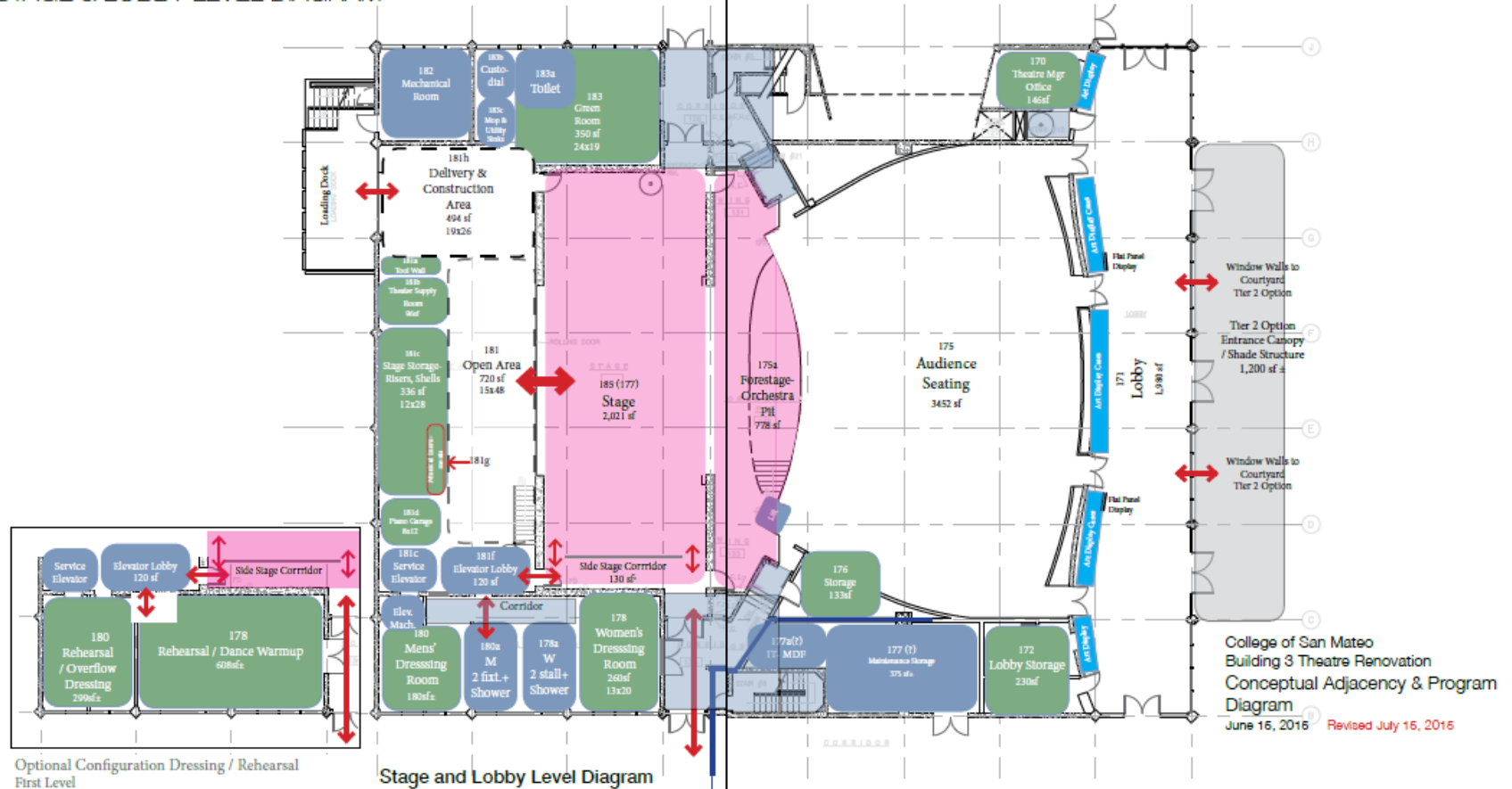
College of San Mateo Theatre Modernization (B3)



▶ "Facilities Excellence"

College of San Mateo Theatre Modernization (B3)

STAGE & LOBBY LEVEL DIAGRAM



College of San Mateo Student Life & Learning Communities Modernization (B17)

- ▶ Budget \$4,000,000
 - ▶ Measure H
- ▶ Project Scope
 - ▶ Project Budget was increased from \$3Mil to \$4Mil to add re-roofing the building to the project scope and to add budget for FF&E.
 - ▶ Interior modernization of building to create dynamic student support areas housing several Learning Communities adjacent with the existing Student Life and Student Government areas in existing Building (B17) 7,400 GSF
 - ▶ Demolish interior demising walls to remove current faculty offices and reconfigure areas for the new program
 - ▶ Provide mechanical, electrical and plumbing systems within new program spaces per District Design Standards and as supported by existing building infrastructure
 - ▶ Modernize building courtyard entryway to enliven the space and invite students into the building
- ▶ Schedule
 - ▶ Construction start Q2 2017; Completion Q2 2018

College of San Mateo Student Life & Learning Communities Modernization (B17)



PENDING DESIGN REVISIONS (PER 11/13/2015 MTG)

- ① DO NOT RELOCATE MAIN ENTRY DOORS. EXISTING DOORS TO REMAIN.
- ② ENLARGE LC 5 AND RELOCATE Huddle ROOM.
- ③ EXTENT OF OPENINGS AT REAR WALL OF LCS TO BE FURTHER STUDIED.



COLLEGE OF SAN MATEO BUILDING 17
CONCEPTUAL PLAN B
 NOVEMBER 20, 2015

CAWARCHITECTS.COM 650.328.1818
CODY ANDERSON WASNEY ARCHITECTS

Copyright © 2015 by CODY ANDERSON WASNEY ARCHITECTS, LLC.

College of San Mateo Student Life & Learning Communities Modernization (B17)



▶ "Facilities Excellence"

College of San Mateo Engineering & Technology (B19N)

- ▶ Budget \$60,000,000
 - ▶ Measure H
- ▶ Project Scope
 - ▶ Demolition of (E) Engineering & Technology Building (B19) and (E) Fire Technology Building (B12)
 - ▶ Construct a New 53,232 GSF Engineering & Technology Building (B19N)
 - ▶ Elements of the Program: Classrooms, Offices, Labs, Emerging Technology Labs including Tech Shop spaces
 - ▶ Modernize Edison Lot/ Building 20 area (pending litigation clearance)
- ▶ Schedule
 - ▶ Construction and Completion TBD pending adjudication

College of San Mateo Engineering & Technology (B19N)

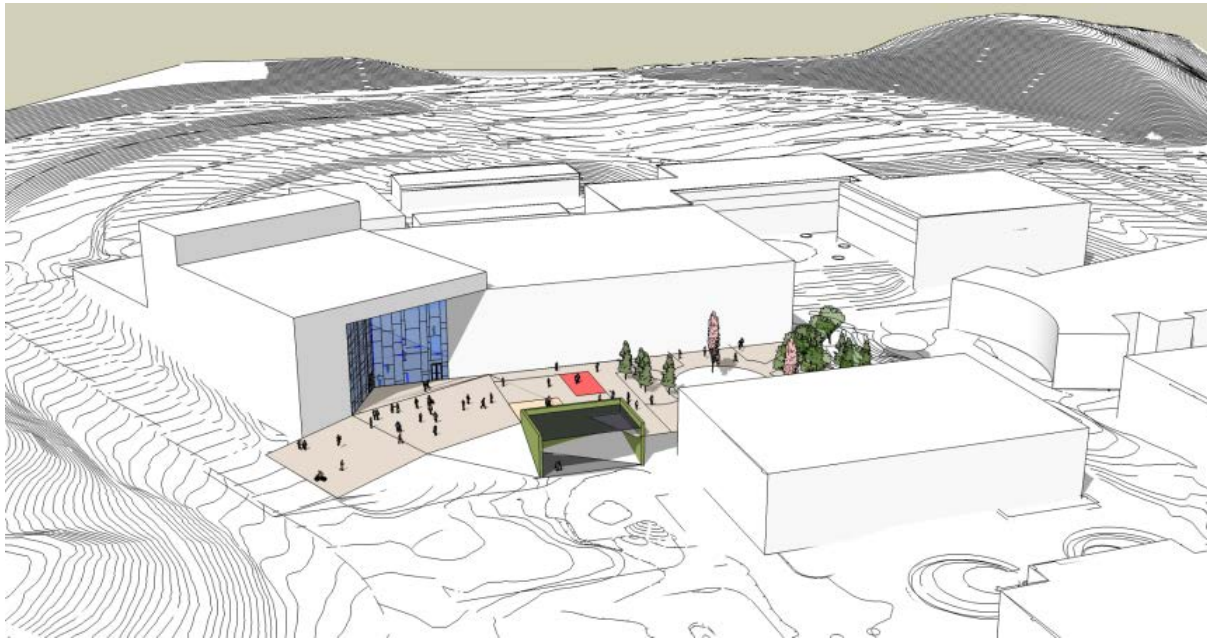


▶ "Facilities Excellence"

Skyline College Social Science and Creative Arts Building (B1N)

- ▶ **Budget \$160,000,000**
 - ▶ Measure H
- ▶ **Project Scope**
 - ▶ Demolition of (E) Social Science and Creative Arts Building (B1) 72,853 GSF (79,453 – 6,600)
 - ▶ Retain and Protect 6,600 GSF of Level One during demolition and construction
 - ▶ Construct a New ~115,000 GSF and renovate Social Science and Creative Arts Building (B1)
 - ▶ Elements of the Program: 520 Seat New Theater w/Orchestra Pit, Scene Shop, Gallery, Music Choral Room/Recital Hall, Concert Band Room, Labs (Piano and MDI), Recording Rooms, Sculpture, Digital Arts, Art History, 2D Design, Photography, Social Sciences, Quad (Plaza) Extension
- ▶ **Status**
 - ▶ Programming completed September 2015
 - ▶ DBE selection process begins Q4 2016
- ▶ **Tentative Schedule**
 - ▶ Construction start Q3 2018; Completion Q3 2020

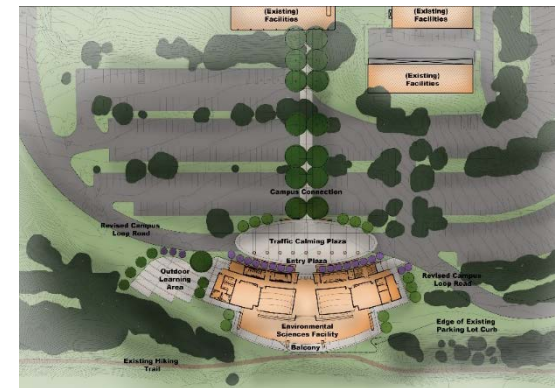
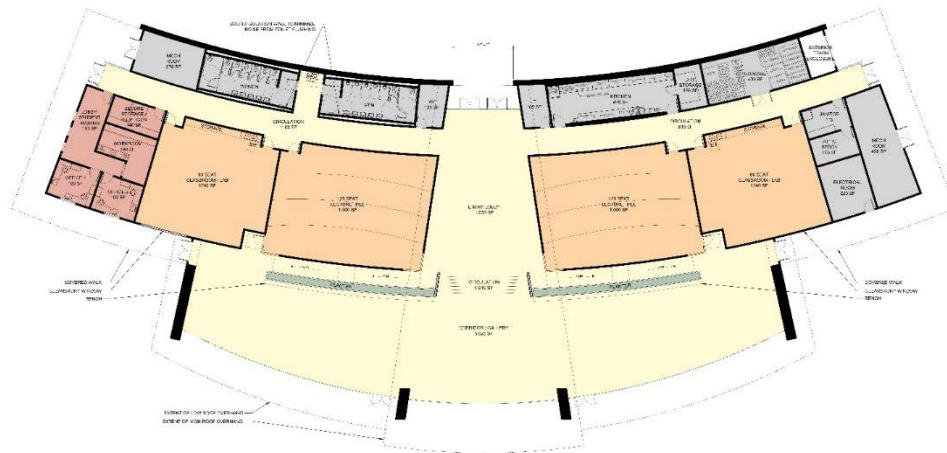
Skyline College Social Science and Creative Arts Building (B1N)



Skyline College Environmental Studies Building (B12N)

- ▶ **Budget \$28,700,000**
 - ▶ Measure H
- ▶ **Project Scope**
 - ▶ Construct a New 21,060 GSF Environmental Studies Building (B12N)
 - ▶ Elements of the Program: (2) Flexible (Flat) 60 seat/each Classrooms, (2) Lecture (Tiered) 128 seat/each Classrooms, Event Space for 250 Occupants, Catering Kitchen, Entrance Lobby, Offices, Outdoor Lab, Connecting Corridor to Main Campus, Optimal Building Location (Panoramic View of Pacific Ocean)
- ▶ **Status**
 - ▶ Programming complete
 - ▶ DBE selection process begins June 27, 2016
- ▶ **Tentative Schedule**
 - ▶ Construction start Q1 2018; Complete Q3 2019

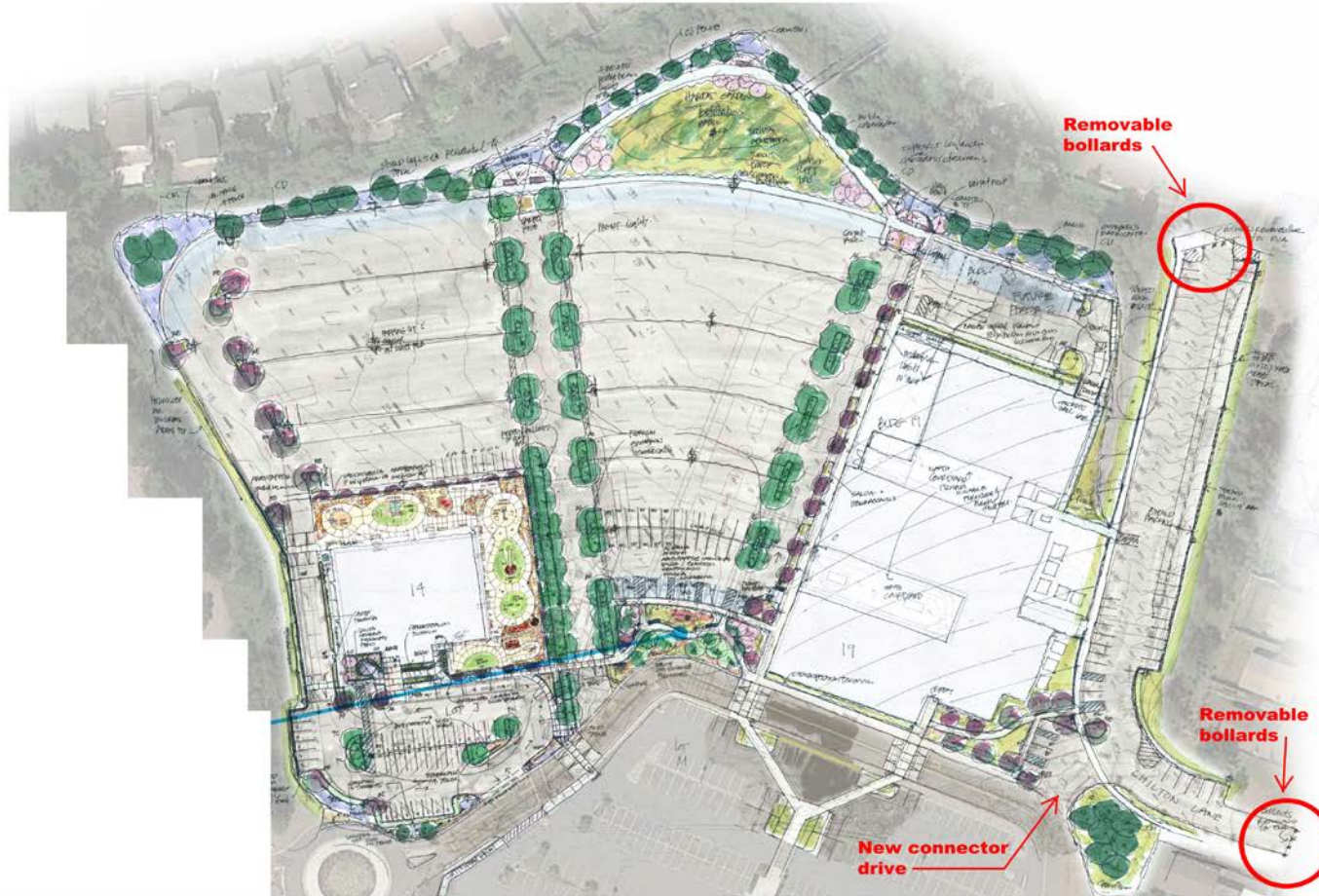
Skyline College Environmental Studies Building (B12N)



Skyline College Lot L Expansion

- ▶ **Budget \$5,000,000**
 - ▶ Measure H
- ▶ **Project Scope**
 - ▶ Expand existing Parking Lot L to ~600 spaces
 - ▶ Relocate Automotive Department Storage area
 - ▶ Remove existing Building 16
 - ▶ Reconfiguring Child Development Center play yards
- ▶ **Status**
 - ▶ Programming in progress
- ▶ **Tentative Schedule**
 - ▶ Construction starts Q2 2017; Completion late Q4 2017

Skyline College Parking Lot L Expansion



USER GROUP MEETING 3

CONCEPTUAL SITE PLAN



LOT L EXPANSION, SKYLINE COLLEGE
SAN BRUNO, CALIFORNIA

MAY 24, 2016

"Facilities Excellence"

Skyline College Pacific Heights Swing Space (B19)

- ▶ **Budget \$23,000,000**
 - ▶ Measure H
- ▶ **Project Scope**
 - ▶ Phase I, Building used for swing space for during construction/modernization of B1, B2;
 - ▶ Provide minimal renovations to accommodate Building I programs: Music, Art, Painting, Ceramics, Sculpture, SparkPoint, CTTL, CWD, Faculty Offices, Administration of Justice, Career Services, English Language Institute, Cooperative Education
 - ▶ Phase 2: Modernization for general lecture classrooms, faculty offices, Middle College, Reprographics, ITS
- ▶ **Status**
 - ▶ Swing space programming in progress
- ▶ **Tentative Schedule**
 - ▶ Phase I construction start Q2 2017; Complete Q4 2017

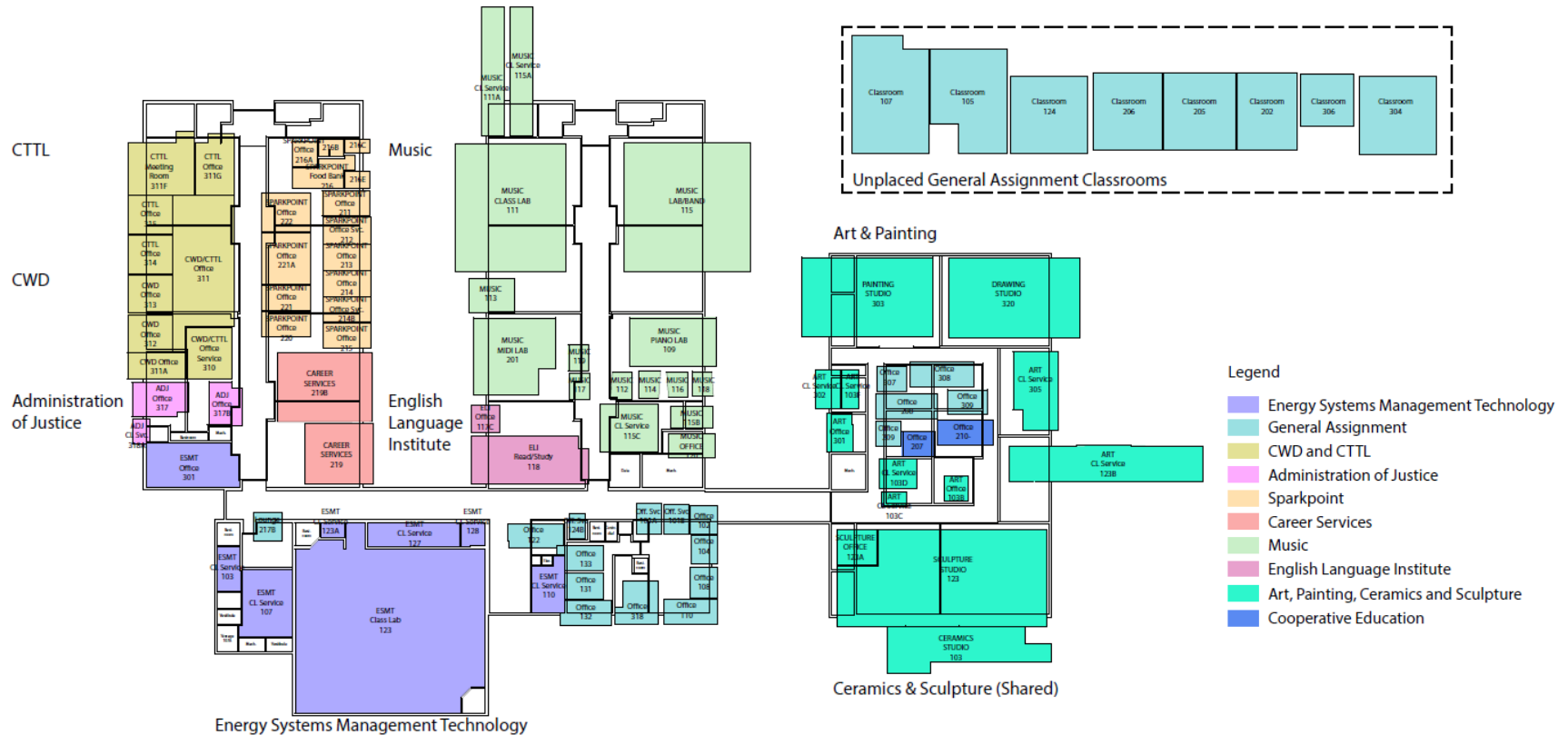
Skyline College Pacific Heights B19



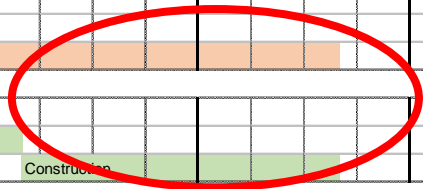
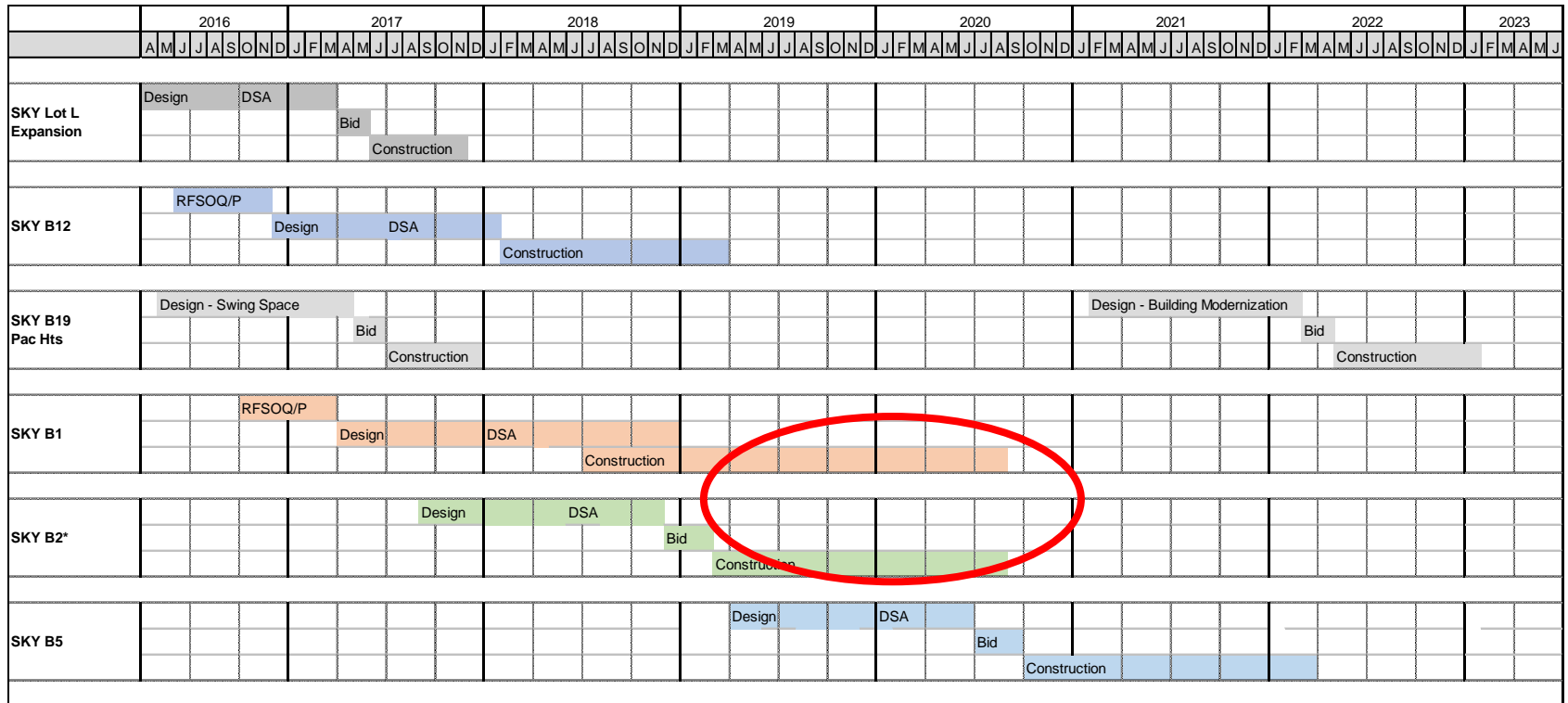
▶ "Facilities Excellence"

Skyline College Pacific Heights (B19)

B1 Swing Test Fit



Skyline College Tentative Schedule*



*Schedule is subject to change due to agency requirements, unforeseen conditions, and/or design build contractor input
 ** Subject to identifying swing space

Question & Answer

José D. Nuñez, LEED AP

Vice Chancellor

Facilities Planning, Maintenance & Operations

nunezj@smccd.edu

Chris Strugar-Fritsch

Director of Capital Projects

strugarfritschc@smccd.edu

www.smccd.edu/facilities