



SAN MATEO COUNTY
COMMUNITY
COLLEGE DISTRICT

Measure H Launch Celebration

Capital Improvement Program (CIP3) Update

March 25, 2015

CIP 3 Planning Efforts Currently Underway

- ▶ Scheduling Consultant - Completed
- ▶ Cost Estimating Consultant - Completed
- ▶ California Environmental Quality Act (CEQA) - Winter 2015
- ▶ Construction Management - In Contract Negotiation
- ▶ Project Controls RFP - expected issuance Spring 2015
- ▶ Design Standards Revision - Spring 2015
- ▶ Swing Space Planning (Onuma) - In Progress
- ▶ Architect & Engineer (A&E) selection for design of first wave of projects - Spring 2015
- ▶ Annual General Contractor and Major Sub Contractor - 2015 Prequalification Completed

Contract Templates- Legal Revision

- ▶ A&E Short Form Professional Services Agreement (PSA) for conceptual assignments
- ▶ A&E Long Form PSA for Design-Bid-Build (DBB)
- ▶ A&E Agreement for Lease Lease-Back (LLB)
- ▶ Pre-Construction Services Agreement for (LLB)
- ▶ Construction Contracts
 - ▶ Design Build (DB)
 - ▶ Design-Bid-Build (DBB) - Micro, Medium and Large Projects
 - ▶ Site and Facilities Lease Agreements (LLB)
 - ▶ Project Labor Agreement (PLA)



Facilities Master Plan Amendment

San Mateo County Community College District

2015 Facilities Master Plan Amendment to the 2011 Facilities Master Plan



"Facilities Excellence"

Cañada College Facilities Master Plan Map



"Facilities Excellence"

Cañada College Project List

- ▶ Cañada Building 1 Physical Education / Athletics (Demo & New Construction)
- ▶ Cañada Math / Science / Technology (New Construction)
- ▶ Cañada Building 3 Humanities
- ▶ Cañada Building 9 Library / Student Resource Center
- ▶ Cañada Building 13 Multiple Disciplinary Instructional
- ▶ Cañada Building 16/18 Science / Physical / Life Sciences (Secondary Effects)

College of San Mateo Facilities Master Plan Map



College of San Mateo Project List

- ▶ CSM Building 1 Public Safety / Multi-Disciplinary
- ▶ CSM Building 3 Humanities / Arts Building
- ▶ CSM Building 5 Health and Wellness Center Expansion
- ▶ CSM Building 7 Facilities Maintenance Center
- ▶ CSM Building 8 Kinesiology / Wellness (Demo & New Construction)
- ▶ CSM Building 9 Library / Learning Resource Center
- ▶ CSM Building 12 East Hall (Demo)
- ▶ CSM Building 17 Student Life / Faculty Offices
- ▶ CSM Building 19 Engineering and Technology (Demo & New Construction)
- ▶ CSM Building 20 / 20A Horticulture Demo / Edison Lot (Demo & New Construction)
- ▶ CSM Building 34 Fire Academy (Secondary Effects)

Skyline College Facilities Master Plan Map

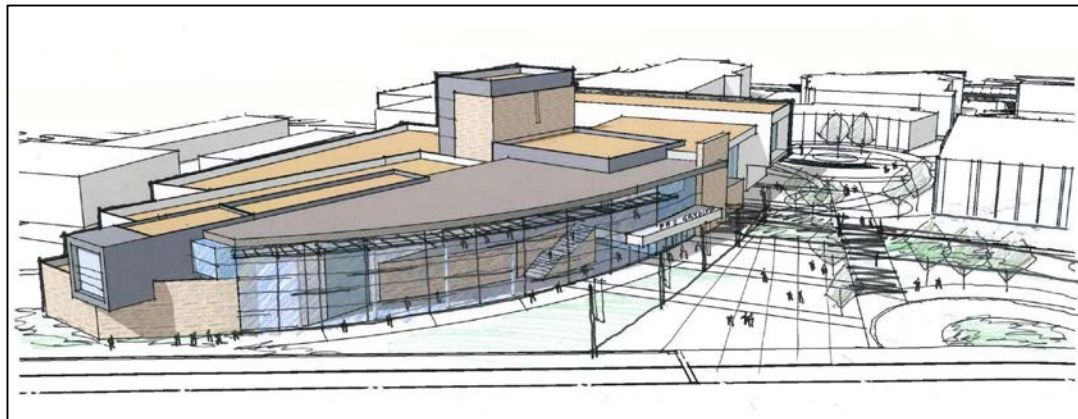


Skyline College Project List

- ▶ Skyline Building 1 Social Science / Creative Arts (Demo & New Construction) and Boiler Plant Relocation
- ▶ Skyline Environmental Science (New Construction)
- ▶ Skyline Energy Management (New Construction)
- ▶ Skyline Building 2 Workforce & Economic Development
- ▶ Skyline Building 5 Library & Learning Resource Center
- ▶ Skyline Building 14 Child Development Center (Loma Chica)
- ▶ Skyline Building 19 Pacific Heights (Demo & New Parking)

District Wide Project List

- ▶ Network (10GB) Upgrade / Phone Replacement
- ▶ Energy Efficiency/ Renewable Projects
- ▶ Roadways / Parking / Infrastructure
- ▶ Emergency Building Repair Fund (EBRF)
- ▶ Small Projects



Process of a Project

- ▶ Facilities Planning is based upon Educational Planning
- ▶ Budget (Conceptual vs. Actual)
- ▶ Delivery Method (DBB vs. DB vs. LLB)
- ▶ A&E Selection & Design Process (9-12 months)
 - ▶ Programming /Schematic Design / Design Development / Construction Documents
- ▶ Schedule Development & Execution
 - ▶ Academic vs. Construction Logistics
- ▶ Contractor Procurement (DBB vs. DB vs. LLB)
- ▶ Permitting (4-6 Months)
- ▶ Construction (12-24 Months)
- ▶ Furniture, Fixtures and Equipment Installation (FF&E)
- ▶ Commissioning
- ▶ Occupancy
- ▶ Close Out

CIP 3 Phase 1 Projects

- ▶ CAN 1 Demo & New Kinesiology - Schematic Design
- ▶ CAN New Math & Science - Programming
- ▶ CSM 3 Theater Modernization - Pending A&E Selection
- ▶ CSM 12 / 19 Demo & New Construction - Pending A&E Selection
- ▶ CSM 17 Student Life / Faculty Office Tennant Improvement - Pending A&E Selection
- ▶ SKY 1 Social Science / Creative Arts (Demo & New Construction) and Boiler Plant Relocation - Pending Design Build RFQ/RFP
- ▶ SKY New Environmental - Pending A&E Selection
- ▶ SKY New Energy Management - Pending A&E Selection

Active CIP2 Projects Under Construction

- ▶ CAN & CSM Parking Light LED Retrofits - Spring 2015
- ▶ CAN & CSM Theater House Lights - Spring 2015
- ▶ CSM North Gateway - Fall 2015
- ▶ CSM Bldg. 6 HHW Boiler Integration - Fall 2015
- ▶ CSM & SKY Roofing and Waterproofing - Fall 2015
- ▶ DW Measurement & Verification - Spring 2016
- ▶ DW Access Control Upgrade - Fall 2015
- ▶ DW Exterior LED Lighting Retrofits - Spring 2016



Question & Answer

José D. Nuñez, LEED® AP

Vice Chancellor

Facilities Planning, Maintenance & Operations

(650) 574-6512

nunezj@smccd.edu

Chris Strugar-Fritsch

Director of Capital Projects

Facilities Planning

(650) 378-7342

strugarfritschc@smccd.edu

Karen Powell

Executive Director of

Facilities Planning & Operations

Facilities Planning, Maintenance & Operations

(650) 358-6808

powellk@smccd.edu