



SAN MATEO COUNTY
COMMUNITY
COLLEGE DISTRICT

FACILITIES PLANNING,
MAINTENANCE & OPERATIONS

“Facilities Excellence”

Bond Oversight Committee CIP Project Update

December 3, 2015

“Facilities Excellence”

CIP3 Planning Efforts Currently Underway

- ▶ Scheduling Consultant – Completed
- ▶ Cost Estimating Consultant – Completed
- ▶ California Environmental Quality Act (CEQA) – BOT Action December 2015
- ▶ Construction Management – In Contract Negotiation
- ▶ Design Standards Revision – Completed
- ▶ Swing Space Planning (ONUMA) – In progress
- ▶ Architect and Engineer (A&E) Selection for Design of First Wave Projects – Completed
- ▶ 2016 Annual General Contractor and Major Subcontractor Prequalification Process – In progress

Overview of Sustainability Efforts

- ▶ Energy projects undergo total cost of ownership analysis
- ▶ Operations and Maintenance protocol are incorporated to facilitate long term savings and sustainability
- ▶ Incentives, rebates, grants and other external funding support is crucial to supporting these projects
- ▶ Staff is encouraged and trained to continuously improve and apply best practices in operations

Cañada College Menlo Park Classroom Renovation

- ▶ Budget \$75,000
 - ▶ College Grant
- ▶ Project Scope
 - ▶ New flooring, paint and SMART classroom upgrades for one classroom and one computer lab
 - ▶ Server relocation from within an office to the back of one of the two classrooms
- ▶ Schedule
 - ▶ 3rd Quarter 2015

Cañada College Menlo Park Classroom Renovation



Before

▶ "Facilities Excellence"

Cañada College Menlo Park Classroom Renovation



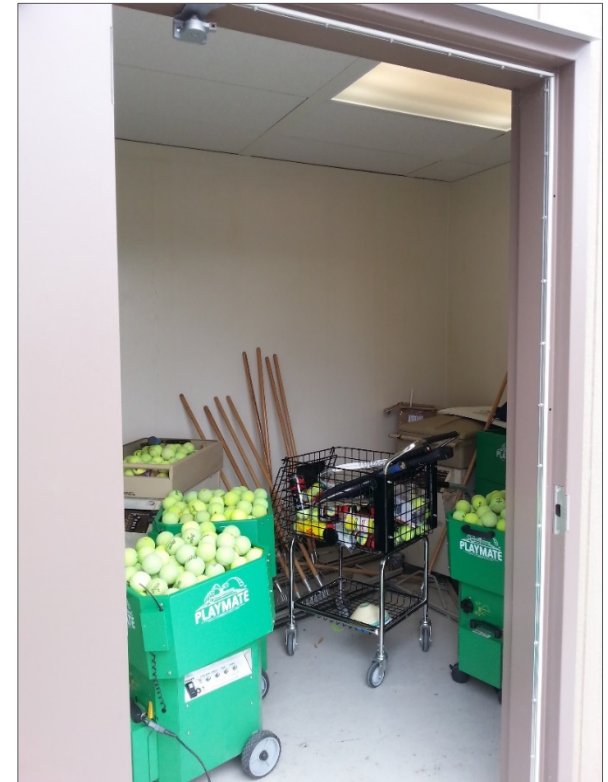
After

▶ "Facilities Excellence"

Cañada College Tennis Court Office

- ▶ Budget \$30,000
 - ▶ Redevelopment Funds
- ▶ Project Scope
 - ▶ Creation of a faculty office near the tennis courts by converting an existing storage room into a two person office so that the instructors can be near the courts and have a space to meet with the students
 - ▶ The storage room into a office included power, data, HVAC, surplus furniture and a new shed to store the tennis equipment
- ▶ Schedule
 - ▶ 3rd Quarter 2015

Cañada College Tennis Court Office



Before

▶ "Facilities Excellence"

Cañada College Tennis Court Office



After

▶ "Facilities Excellence"

Cañada College and CSM Roadway and Parking Lot Fixture LED Retrofit

- ▶ Budget \$1,300,000
 - ▶ \$450,000 Measure A
 - ▶ \$850,000 Energy Efficiency Funds/ Prop 39
- ▶ Project Scope
 - ▶ Design-Build project to replace 261 pole mounted fixtures and install new lighting controls at Cañada College and CSM.
- ▶ Schedule
 - ▶ Construction Completion –
 - Fixture installation is complete. Controls programming to be completed in 1st Quarter 2016.

Cañada College Roadway and Parking Lot Fixtures



Cañada College Kinesiology & Wellness Building (B1N)

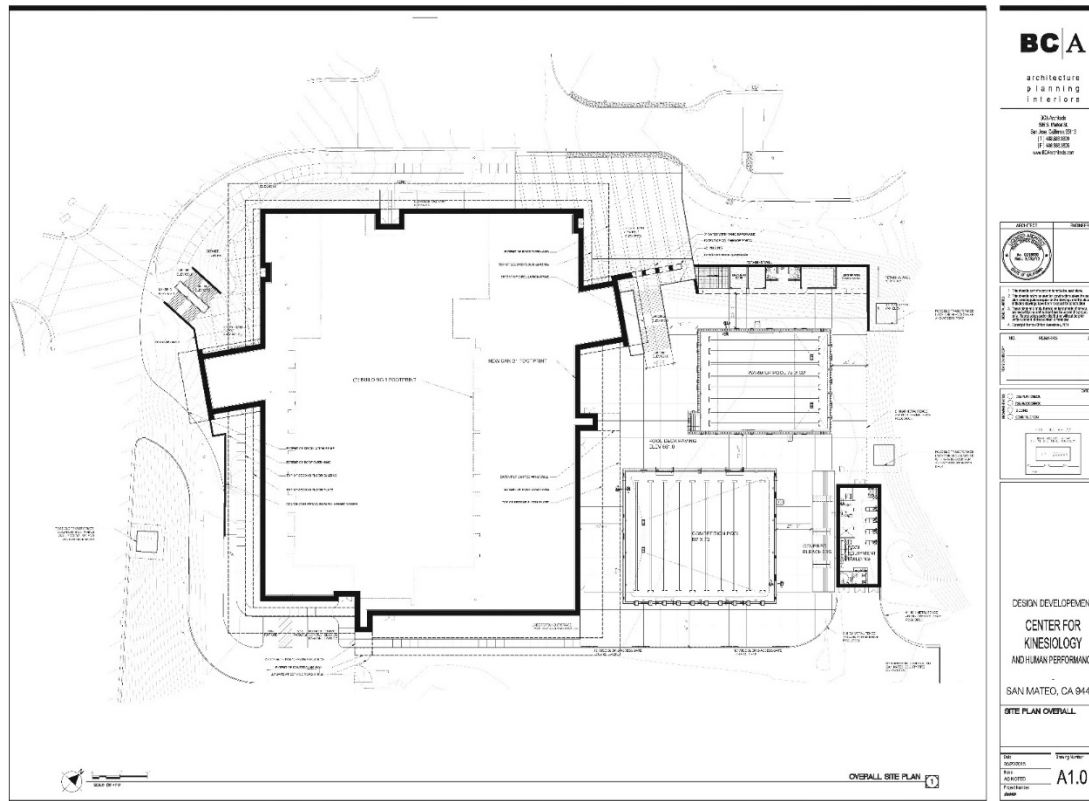
- ▶ Budget \$87,000,000
 - ▶ Measure H
 - ▶ Measure A
 - ▶ Fund 4
- ▶ Project Scope
 - ▶ Construct a New 85,000 GSF Wellness and Kinesiology Building (B1N)
 - ▶ Elements of the Program: Separate enterprise and student locker and shower facilities, basketball gym, Dance Classrooms, Exercise Classrooms, Fitness Floor, Entrance Lobby, Faculty and Enterprise Offices, Two Outdoor Pools
- ▶ Schedule
 - ▶ Construction start in 1st Quarter 2017; Completion 2nd Quarter 2019

Cañada College Kinesiology & Wellness and Building (B1N)



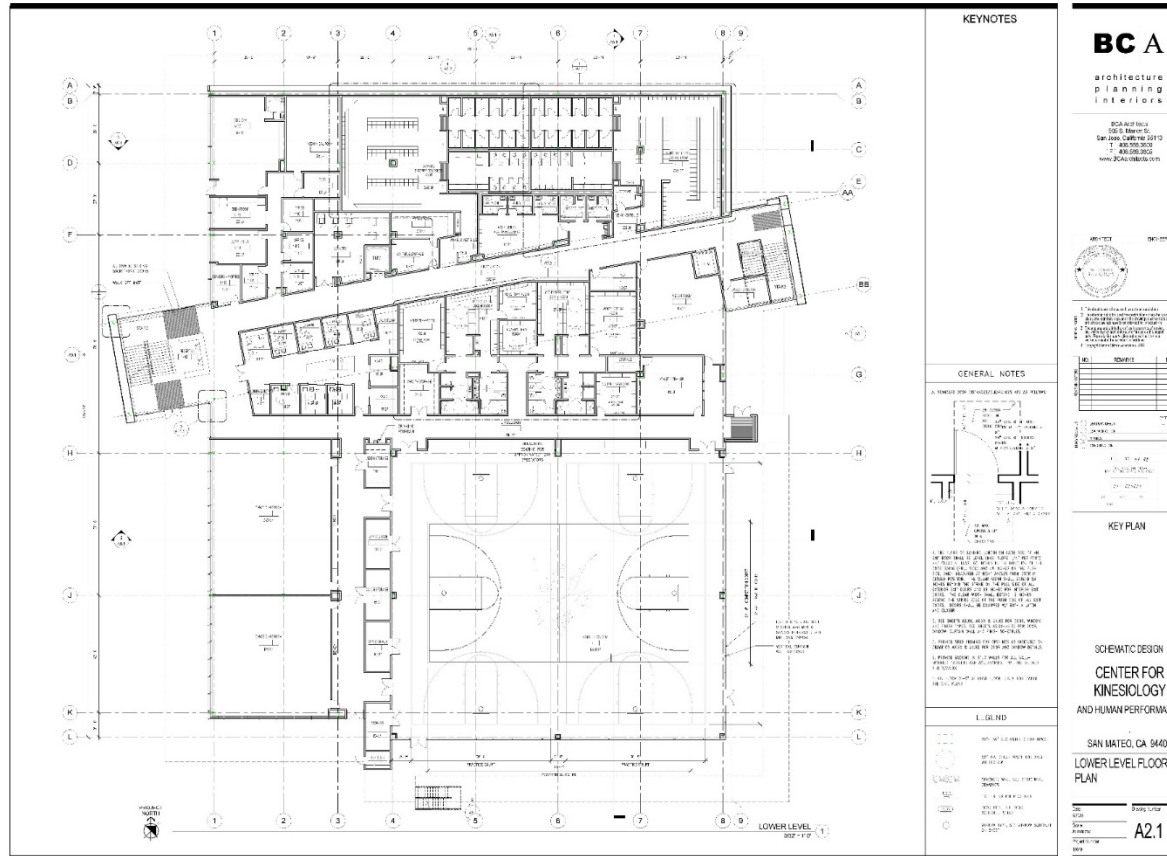
▶ "Facilities Excellence"

Cañada College Kinesiology & Wellness Building (B1N) Site Plan



"Facilities Excellence"

Cañada College Kinesiology & Wellness Building (B1N) First Floor Plan



"Facilities Excellence"

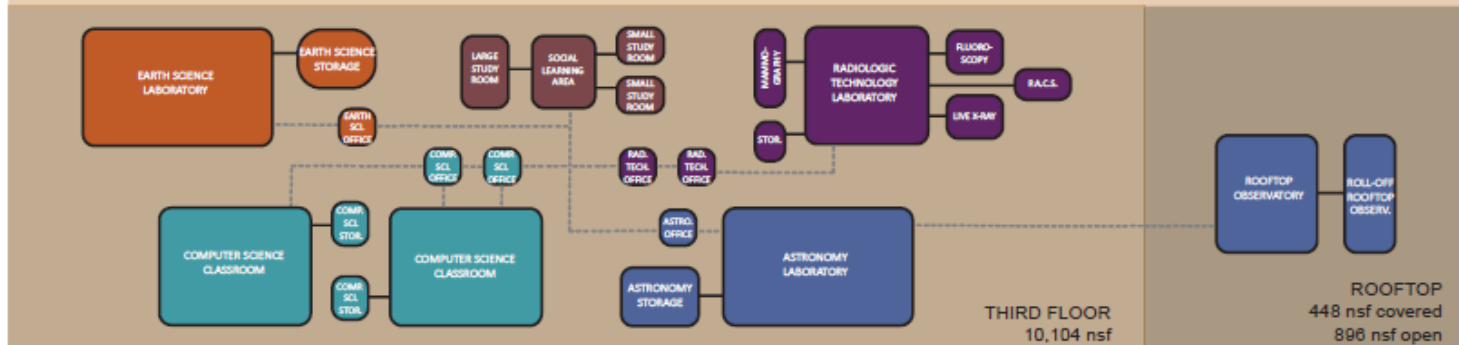
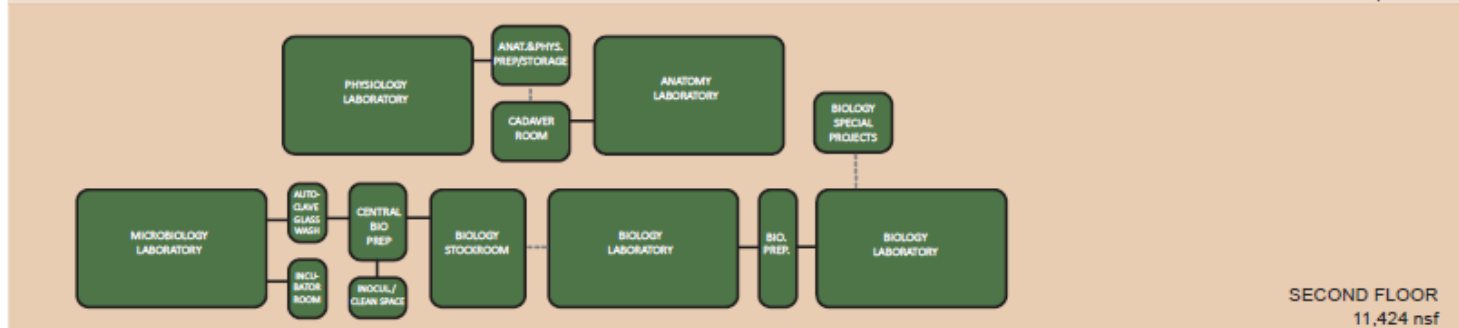
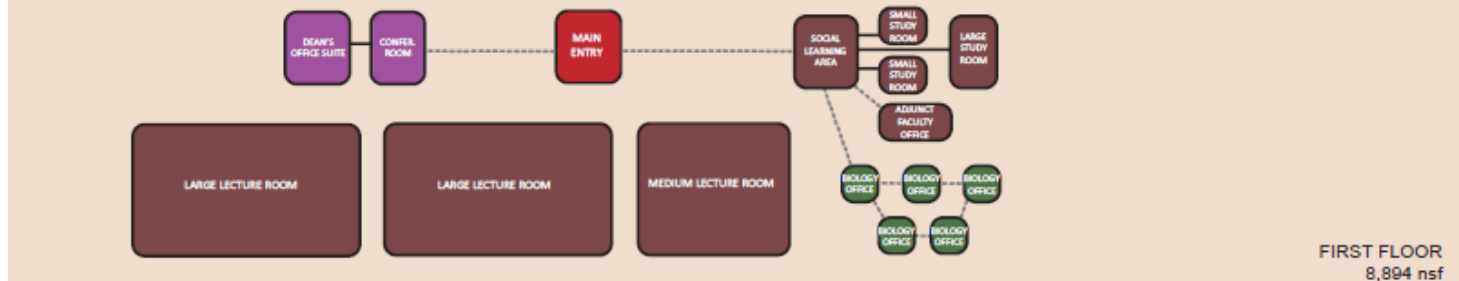
Cañada College Math and Science Building (B23N)

- ▶ Budget \$55,300,000
 - ▶ Measure H
- ▶ Project Scope
 - ▶ Construct a New 48,000 GSF Math and Science Building (B23N)
 - ▶ Elements of the Program: Classrooms, Science Labs, Faculty Offices, Entrance Lobby
- ▶ Schedule
 - ▶ Construction start in 2nd Quarter 2017; Completion 4th Quarter 2019

Cañada College Math and Science Building (B23N)

ADJACENCY DIAGRAM
 Artik Art and Architecture/ RFD

Science and Technology Building
 Canada College



"Facilities Excellence"

CSM North Gateway Phase II

- ▶ Project Budget
 - ▶ \$15,600,000
 - ▶ \$6M Measure A
 - ▶ \$9.6M State Capital Outlay
- ▶ Project Scope
 - ▶ Demolition of existing buildings #21 – 29.
 - ▶ Creation of new Gateway Plaza, renovation of existing parking lots 6 A-D.
 - ▶ New Plaza and amphitheater, pedestrian pathways, landscaping and energy efficient LED parking lot lights.
- ▶ Schedule
 - ▶ Construction: Contractor Default Termination on 3rd Quarter 2014, Surety and District executed Takeover agreement on 1st Quarter 2015. Takeover Contractor reached substantial completion in time to use facility for the start of Fall Semester 3rd Quarter 2015.

CSM North Gateway – before Construction



▶ "Facilities Excellence"

CSM North Gateway – Construction Substantially Complete



"Facilities Excellence"

College of San Mateo Softball Field Upgrades

- ▶ Budget \$75,000
 - ▶ Redevelopment Funds
- ▶ Project Scope
 - ▶ Replacement of all netting in the batting cages, backstop and dug outs
 - ▶ New windscreen in the outfield
 - ▶ Replacement of all signage due to sun damage
 - ▶ New paint on all buildings
 - ▶ New pads throughout
- ▶ Schedule
 - ▶ 3rd Quarter 2015

College of San Mateo Softball Field Upgrades



Before

▶ "Facilities Excellence"

College of San Mateo Softball Field Upgrades



After

▶ "Facilities Excellence"

College of San Mateo Theatre Modernization (B3)

- ▶ Budget \$12,200,000
 - ▶ Measure H
- ▶ Project Scope
 - ▶ Interior modernization of building, focused on replacing aging mechanical, electrical and plumbing building infrastructure of existing Building (B3) 28,000 GSF
 - ▶ Modernize areas and features as required to provide ADA access to the building, including the lower stage, seating and back of stage areas
 - ▶ Modernize interior areas of the building, including dressing rooms, restrooms, rehearsal and back of stage rooms
 - ▶ Modernize Theatre audio/visual, acoustical and lighting systems as allowed by the budget
- ▶ Schedule
 - ▶ Construction start 4th Quarter 2016; Completion 2nd Quarter 2018

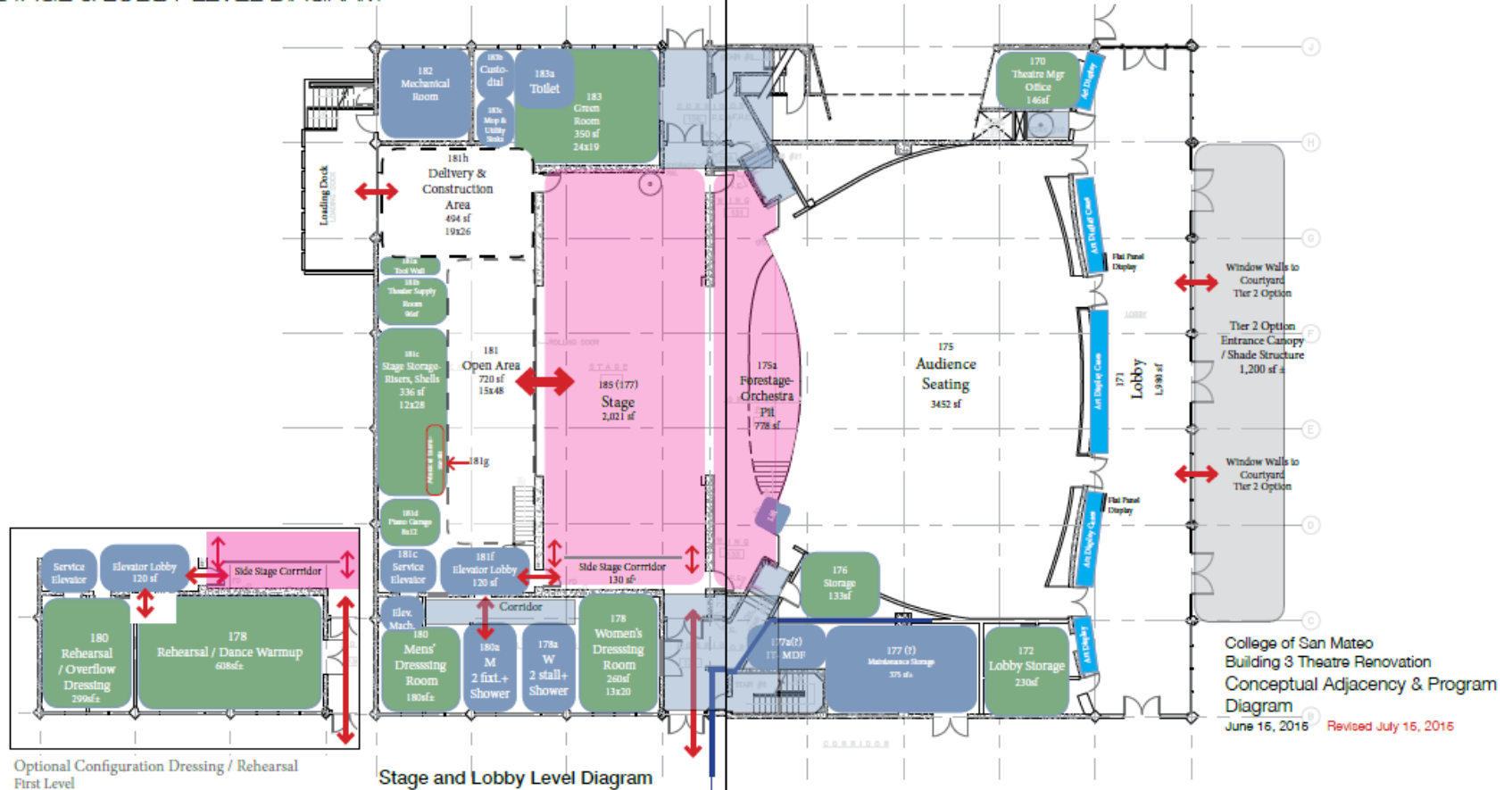
College of San Mateo Theatre Modernization (B3)



▶ "Facilities Excellence"

College of San Mateo Theatre Modernization (B3)

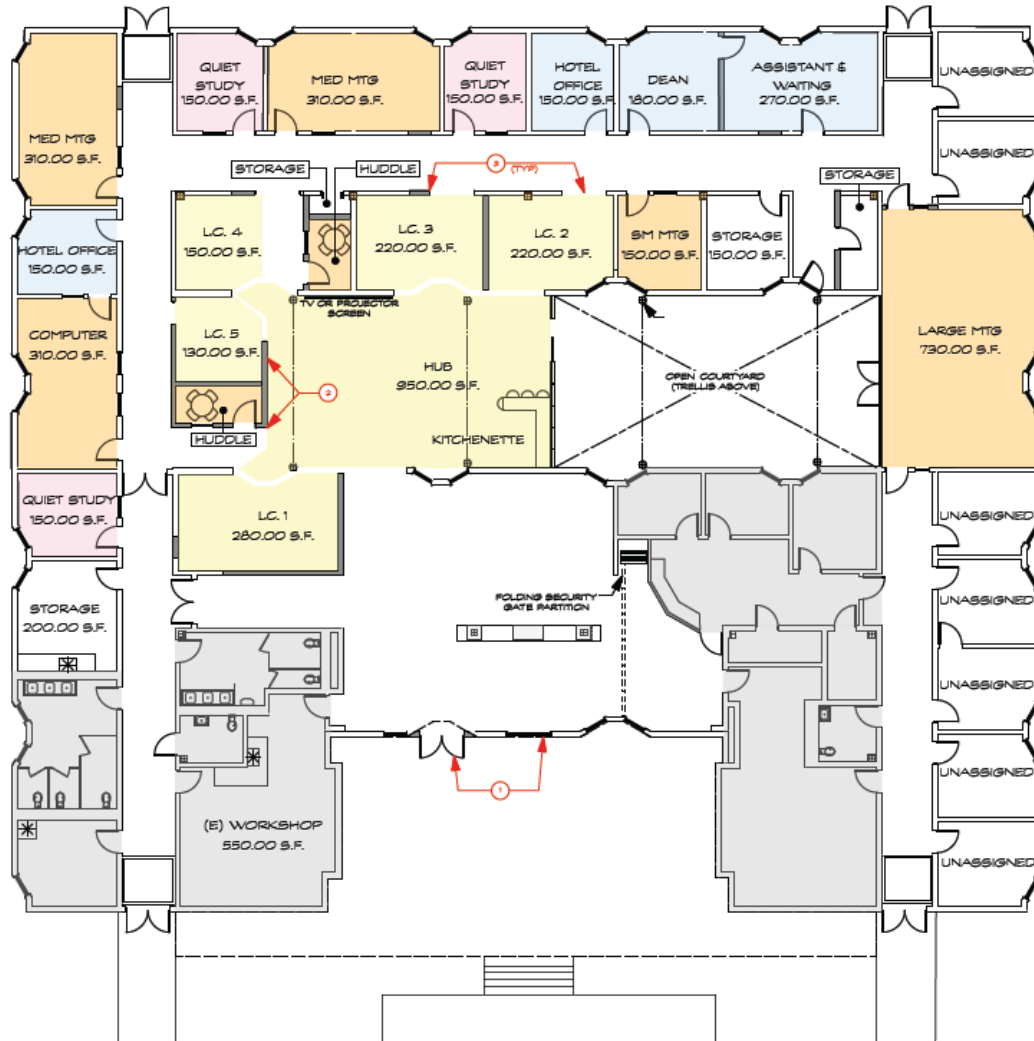
STAGE & LOBBY LEVEL DIAGRAM



College of San Mateo Student Life & Learning Communities Modernization (B17)

- ▶ Budget \$3,000,000
 - ▶ Measure H
- ▶ Project Scope
 - ▶ Interior modernization of building to create dynamic student support areas housing several Learning Communities adjacent with the existing Student Life and Student Government areas in existing Building (B17) 7,400 GSF
 - ▶ Demolish interior demising walls to remove current faculty offices and reconfigure areas for the new program
 - ▶ Provide mechanical, electrical and plumbing systems within new program spaces per District Design Standards and as supported by existing building infrastructure
 - ▶ Modernize building courtyard entryway to enliven the space and invite students into the building
- ▶ Schedule
 - ▶ Construction start 4th Quarter 2016; Completion 4th Quarter 2017

College of San Mateo Student Life & Learning Communities Modernization (B17)



PENDING DESIGN REVISIONS (PER 1/19/2015 MTG)

- ① DO NOT RELOCATE MAIN ENTRY DOORS. EXISTING DOORS TO REMAIN.
- ② ENLARGE LC 5 AND RELOCATE Huddle ROOM.
- ③ EXTENT OF OPENINGS AT REAR WALL OF LCS TO BE FURTHER STUDIED.

CONCEPT PLAN B: COURTYARD HUB



College of San Mateo Engineering & Technology (B19N)

- ▶ Budget \$60,000,000
 - ▶ Measure H
- ▶ Project Scope
 - ▶ Demolition of (E) Engineering & Technology Building (B19) and (E) Fire Technology Building (B12)
 - ▶ Construct a New 53,232 GSF Engineering & Technology Building (B19N)
 - ▶ Elements of the Program: Classrooms, Offices, Labs, Emerging Technology Labs including Tech Shop spaces
 - ▶ Modernize Edison Lot/ Building 20 area (pending litigation clearance)
- ▶ Schedule
 - ▶ Construction and Completion TBD pending adjudication

College of San Mateo Engineering & Technology (B19N)



▶ "Facilities Excellence"

Skyline College - Middle College

- ▶ Budget \$50,000
 - ▶ Measure A
- ▶ Project Scope
 - ▶ Creation of a Middle College Program in existing classroom space
 - ▶ New office for the Director, counselors and support staff
 - ▶ Conversion of a classroom into two counselor offices
 - ▶ Conversion of a storage room into a reception/work space
- ▶ Schedule
 - ▶ 3rd Quarter 2015

Skyline College - Middle College



Before

▶ "Facilities Excellence"

Skyline College - Middle College



After



"Facilities Excellence"

Skyline College Social Science and Creative Arts Building (B1N)

- ▶ Budget \$110,000,000
 - ▶ Measure H
- ▶ Project Scope
 - ▶ Demolition of (E) Social Science and Creative Arts Building (B1) 72,853 GSF (79,453 – 6,600)
 - ▶ Retain and Protect 6,600 GSF of Level One during demolition and construction
 - ▶ Construct a New ~100,000 GSF Social Science and Creative Arts Building (B1N)
 - ▶ Elements of the Program: 520 Seat New Theater w/Orchestra Pit, Scene Shop, Gallery, Music Choral Room/Recital Hall, Concert Band Room, Labs (Piano and MDI), Recording Rooms, Sculpture, Digital Arts, Art History, 2D Design, Photography, Social Sciences, Quad (Plaza) Extension
- ▶ Schedule
 - ▶ Construction Demolition 3rd Quarter 2017; Completion 3rd Quarter 2019

Skyline College Social Science and Creative Arts Building (B1)



▶ "Facilities Excellence"

Skyline College Environmental Studies Building (B12N)

- ▶ Budget \$28,700,000
 - ▶ Measure H
- ▶ Project Scope
 - ▶ Construct a New 21,060 GSF Environmental Studies Building (B12N)
 - ▶ Elements of the Program: (2) Flexible (Flat) 60 seat/each Classrooms, (2) Lecture (Tiered) 128 seat/each Classrooms, Event Space for 250 Occupants, Catering Kitchen, Entrance Lobby, Offices, Outdoor Lab, Connecting Corridor to Main Campus, Optimal Building Location (Panoramic View of Pacific Ocean)
- ▶ Schedule
 - ▶ Construction 1st Quarter 2017; Completion 2nd Quarter 2018

Districtwide Exterior Lighting Upgrade

- ▶ Budget

- ▶ \$3,000,000

- Energy Efficiency Funds

- Prop 39

- PG&E Incentives

- Measure H

- ▶ Project Scope

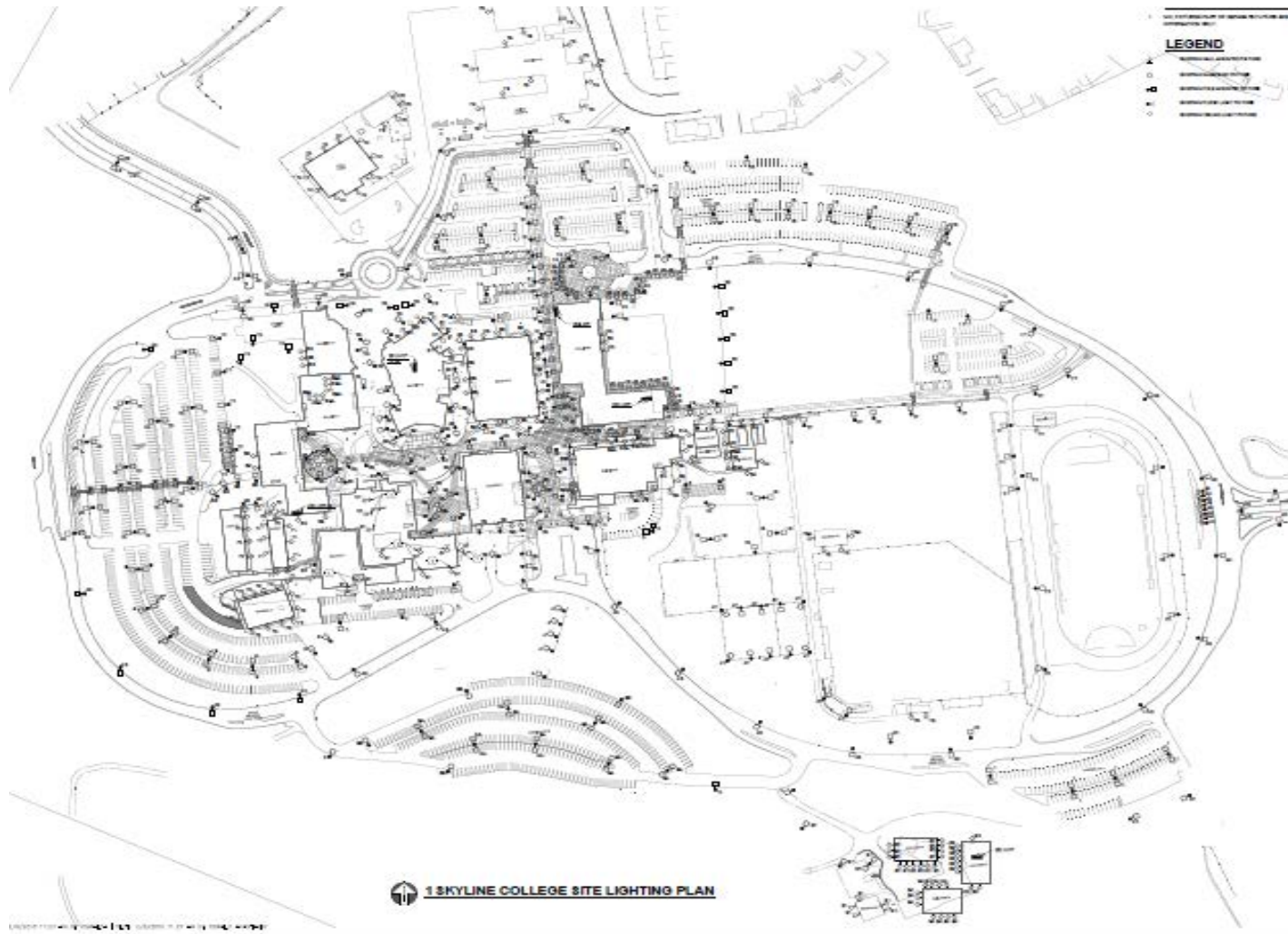
- ▶ Design-Build project to upgrade 1,100 exterior fixtures and lighting controls at all three campuses.

- ▶ Schedule

- ▶ DBE Design phase started: 2nd Quarter 2015

- ▶ Estimated Construction Completion: 2nd Quarter 2016

Districtwide Exterior Lighting- Skyline Campus



▶ "Facilities Excellence"

Districtwide Utility Measurement & Verification Project

- ▶ Budget

- ▶ \$2,500,000

- Measure A

- ▶ Project Scope

- ▶ Design-Build project to provide an energy measurement and verification and management system, including replacing all outdated building management system controllers and software system, and adding utility meters to most buildings throughout the District, and adding an Energy Information System to monitor energy usage.

- ▶ Schedule

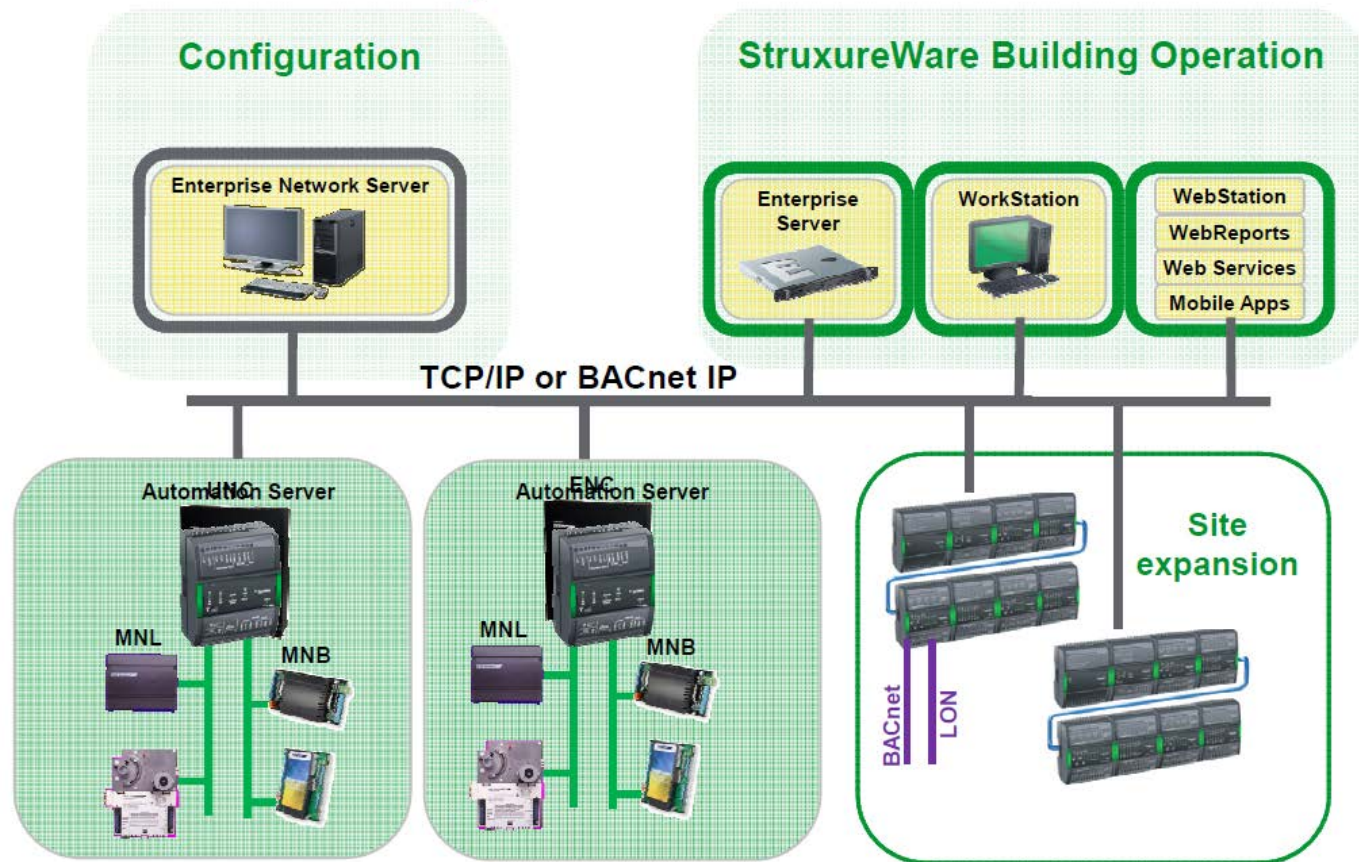
- ▶ DBE Design phase started: 4th Quarter 2014

- ▶ Construction started: 1st Quarter 2015; 70% complete

- ▶ Estimated Construction Completion: 2nd Quarter 2016

Districtwide Utility Measurement & Verification Project

Converted System Architecture



Question & Answer

José D. Nuñez, LEED AP
Vice Chancellor

Facilities Planning, Maintenance & Operations

nunezj@smccd.edu

Karen D. Powell
Executive Director

Facilities Planning & Operations

powellk@smccd.edu

Chris Strugar-Fritsch
Director of Capital Projects

strugarfritschc@smccd.edu

www.smccd.edu/facilities