



SAN MATEO COUNTY  
**COMMUNITY**  
COLLEGE DISTRICT

FACILITIES PLANNING,  
MAINTENANCE & OPERATIONS

“Facilities Excellence”

# Bond Oversight Committee CIP Project Update

September 3, 2015

“Facilities Excellence”

# Cañada College Menlo Park Classroom Renovation

---

- ▶ Budget \$75,000
  - ▶ College Grant
- ▶ Project Scope
  - ▶ New flooring, paint and SMART classroom upgrades for one classroom and one computer lab
  - ▶ Server relocation from within an office to the back of one of the two classrooms
- ▶ Schedule
  - ▶ 3<sup>rd</sup> Quarter 2015

# Cañada College Menlo Park Classroom Renovation

---



*Before*

---

▶ "Facilities Excellence"

# Cañada College Menlo Park Classroom Renovation

---



*After*

---

▶ "Facilities Excellence"

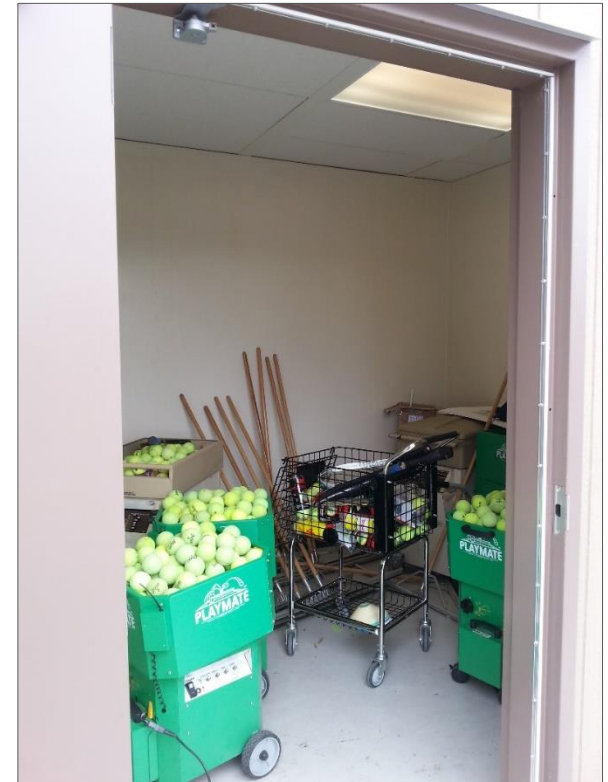
# Cañada College Tennis Court Office

---

- ▶ Budget \$30,000
  - ▶ Redevelopment Funds
- ▶ Project Scope
  - ▶ Creation of a faculty office near the tennis courts by converting an existing storage room into a two person office so that the instructors can be near the courts and have a space to meet with the students
  - ▶ The storage room into a office included power, data, HVAC, surplus furniture and a new shed to store the tennis equipment
- ▶ Schedule
  - ▶ 3<sup>rd</sup> Quarter 2015

# Cañada College Tennis Court Office

---



*Before*

---

▶ "Facilities Excellence"

# Cañada College Tennis Court Office

---



*After*

---

"Facilities Excellence"

# Cañada College and CSM Roadway and Parking Lot Fixture LED Retrofit

---

- ▶ Budget \$1,300,000
  - ▶ \$450,000 Measure A
  - ▶ \$850,000 Energy Efficiency Funds/ Prop 39
- ▶ Project Scope
  - ▶ Design-Build project to replace 261 pole mounted fixtures and install new lighting controls at Cañada College and CSM.
- ▶ Schedule
  - ▶ Construction Completion –
    - Fixture installation is complete. Controls programming to be completed in 3<sup>rd</sup> Quarter 2015.



# Cañada College Roadway and Parking Lot Fixtures

---



# Cañada College Kinesiology & Wellness Building (B1N)

---

- ▶ Budget \$87,000,000
  - ▶ Measure H
  - ▶ Measure A
  - ▶ Fund 4
- ▶ Project Scope
  - ▶ Construct a New 85,000 GSF Wellness and Kinesiology Building (B1)
  - ▶ Elements of the Program: Separate enterprise and student locker and shower facilities, basketball gym, Dance Classrooms, Exercise Classrooms, Fitness Floor, Entrance Lobby, Faculty and Enterprise Offices, Two Outdoor Pools
- ▶ Schedule
  - ▶ Construction start in 1<sup>st</sup> Quarter 2017; Completion 3<sup>rd</sup> Quarter 2018

# Cañada College Kinesiology & Wellness and Building (B1N)

---



---

▶ "Facilities Excellence"



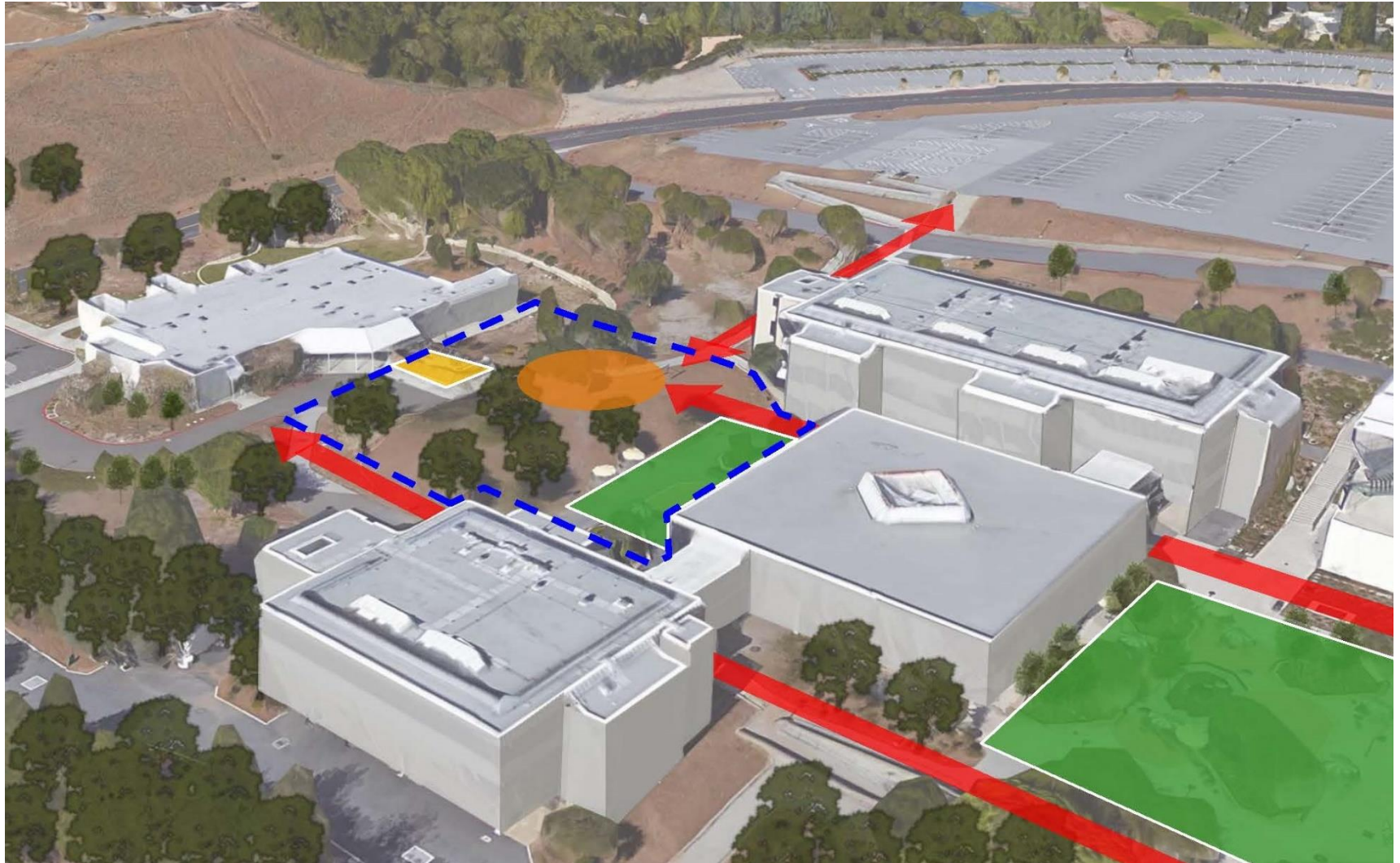


# Cañada College Math and Science Building (B23N)

---

- ▶ Budget \$56,000,000
  - ▶ Measure H
- ▶ Project Scope
  - ▶ Construct a New 48,000 GSF Math and Science Building (B23)
  - ▶ Elements of the Program: Classrooms, Science Labs, Faculty Offices, Entrance Lobby
- ▶ Schedule
  - ▶ Construction start in 2<sup>nd</sup> Quarter 2017; Completion 3<sup>rd</sup> Quarter 2018

# Cañada College Math and Science Building (B23N)

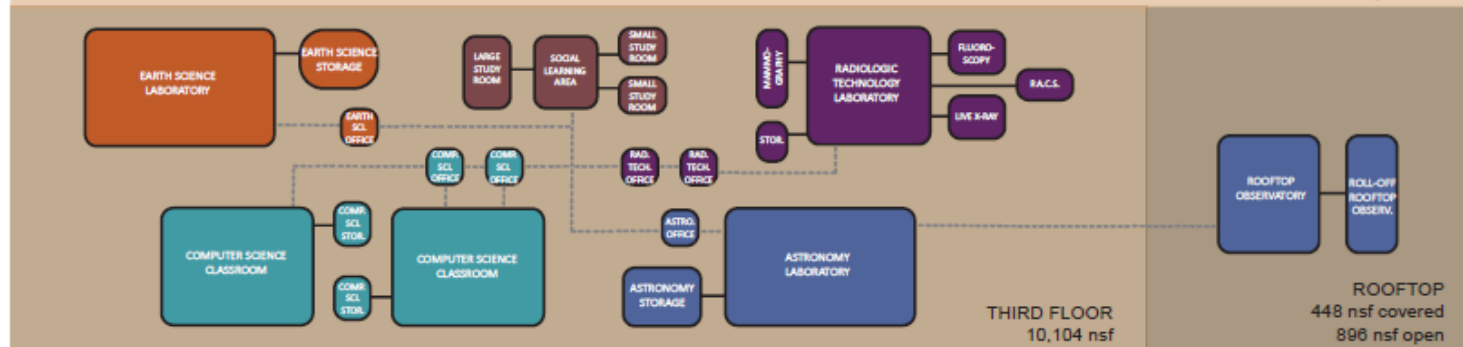
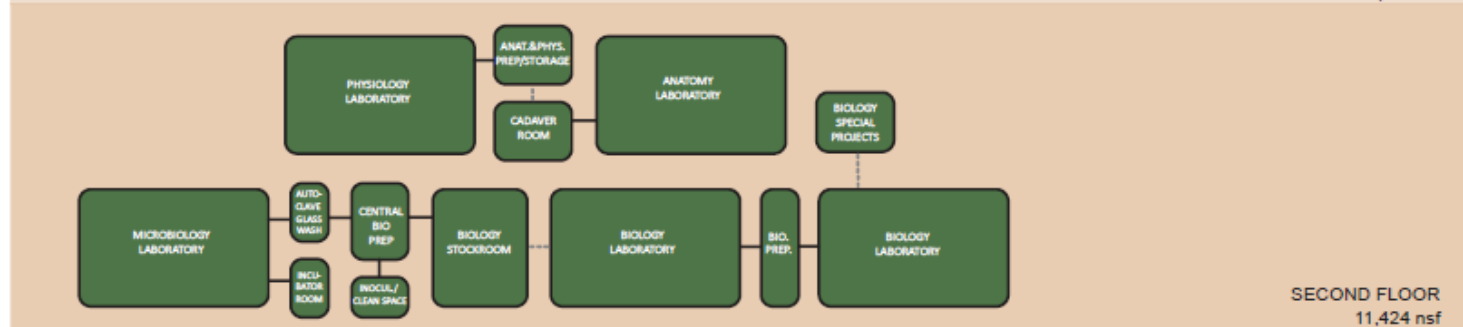
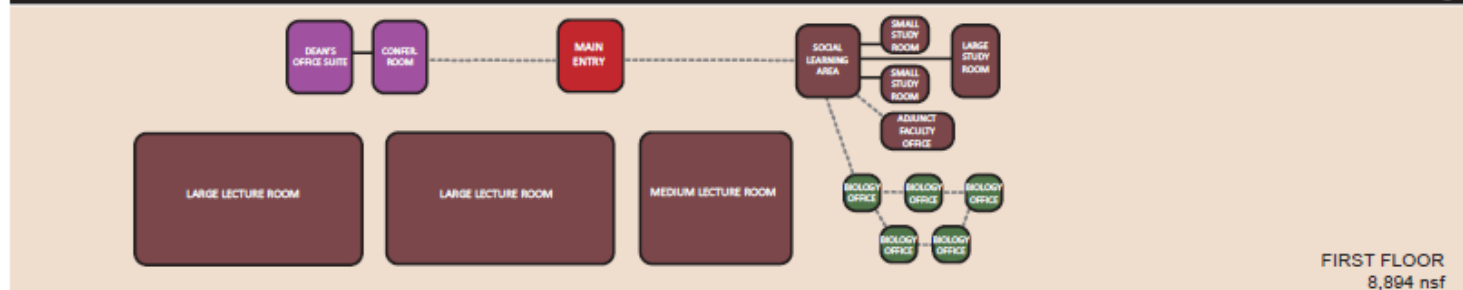


"Facilities Excellence"

# Cañada College Math and Science Building (B23N)

ADJACENCY DIAGRAM  
*Artik Art and Architecture/ RFD*

Science and Technology Building  
 Canada College



"Facilities Excellence"



# CSM North Gateway Phase II

---

- ▶ Project Budget
  - ▶ \$15,600,000
    - ▶ \$6M Measure A
    - ▶ \$9.6M State Capital Outlay
- ▶ Project Scope
  - ▶ Demolition of existing buildings #21 – 29.
  - ▶ Creation of new Gateway Plaza, renovation of existing parking lots 6 A-D.
  - ▶ New Plaza and amphitheater, pedestrian pathways, landscaping and energy efficient LED parking lot lights.
- ▶ Schedule
  - ▶ Construction: Contractor Default Termination on 3<sup>rd</sup> Quarter 2014, Surety and District executed Takeover agreement on 1<sup>st</sup> Quarter 2015. Takeover Contractor reached substantial completion in time to use facility for the start of Fall Semester 3<sup>rd</sup> Quarter 2015.

# CSM North Gateway – before Construction

---



---

▶ "Facilities Excellence"

# CSM North Gateway – Construction Substantially Complete



"Facilities Excellence"

# College of San Mateo Softball Field Upgrades

---

- ▶ Budget \$75,000
  - ▶ Redevelopment Funds
- ▶ Project Scope
  - ▶ Replacement of all netting in the batting cages, backstop and dug outs
  - ▶ New windscreen in the outfield
  - ▶ Replacement of all signage due to sun damage
  - ▶ New paint on all buildings
  - ▶ New pads throughout
- ▶ Schedule
  - ▶ 3<sup>rd</sup> Quarter 2015

# College of San Mateo Softball Field Upgrades

---



*Before*

---

► "Facilities Excellence"

# College of San Mateo Softball Field Upgrades

---



*After*

---

▶ "Facilities Excellence"

# College of San Mateo Theatre Modernization (B3)

---

- ▶ Budget \$12,200,000
  - ▶ Measure H
- ▶ Project Scope
  - ▶ Interior modernization of building, focused on replacing aging mechanical, electrical and plumbing building infrastructure of existing Building (B3) 28,000 GSF
  - ▶ Modernize areas and features as required to provide ADA access to the building, including the lower stage, seating and back of stage areas
  - ▶ Modernize interior areas of the building, including dressing rooms, restrooms, rehearsal and back of stage rooms
  - ▶ Modernize Theatre audio/visual, acoustical and lighting systems as allowed by the budget
- ▶ Schedule
  - ▶ Construction start 4<sup>th</sup> Quarter 2016; Completion 4<sup>th</sup> Quarter 2017

# College of San Mateo Theatre Modernization (B3)

---



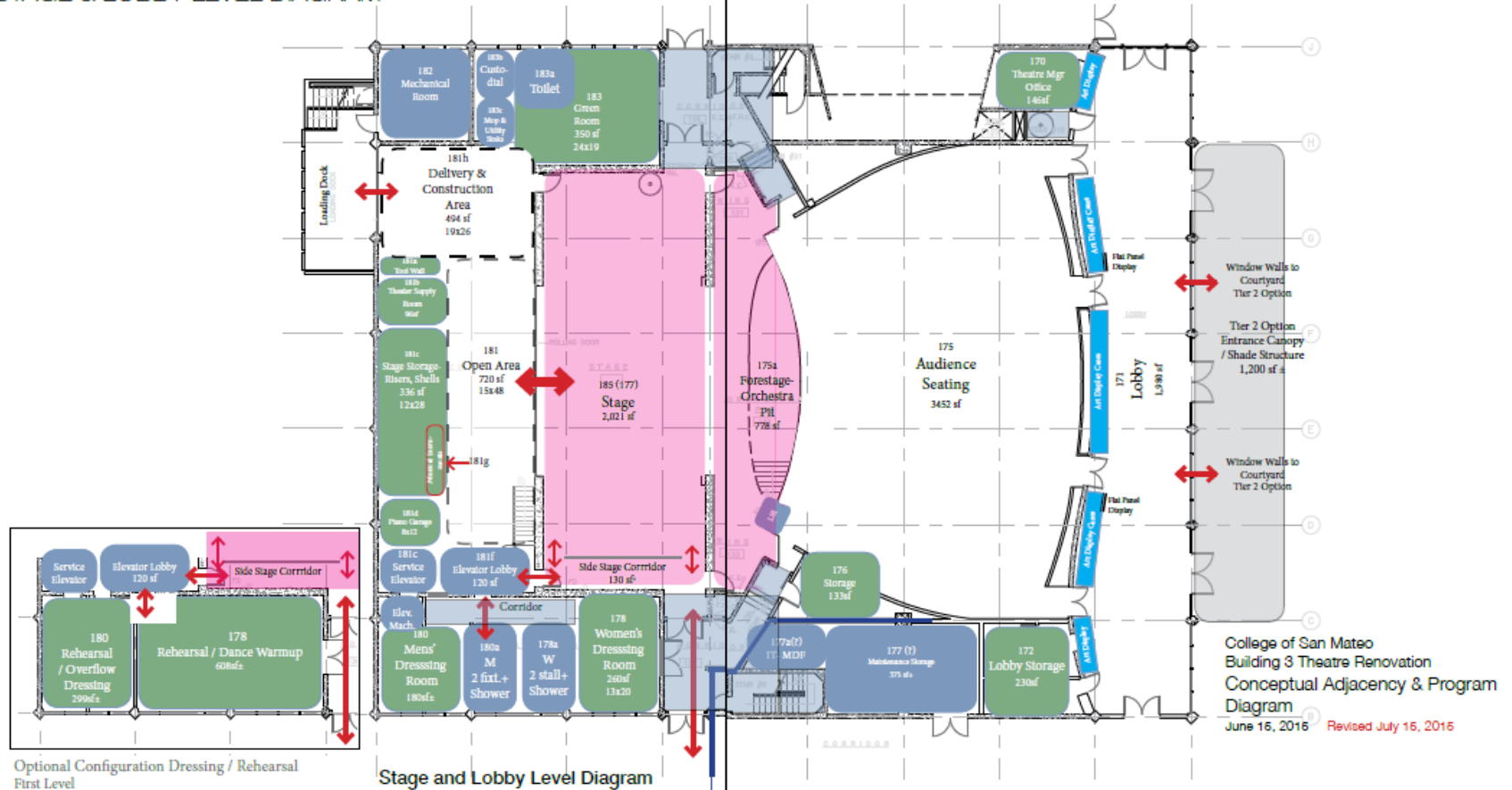
---

▶ "Facilities Excellence"



# College of San Mateo Theatre Modernization (B3)

STAGE & LOBBY LEVEL DIAGRAM



# College of San Mateo Student Life & Learning Communities Modernization (B17)

---

- ▶ Budget \$3,000,000
  - ▶ Measure H
- ▶ Project Scope
  - ▶ Interior modernization of building to create dynamic student support areas housing several Learning Communities adjacent with the existing Student Life and Student Government areas in existing Building (B17) 7,400 GSF
  - ▶ Demolish interior demising walls to remove current faculty offices and reconfigure areas for the new program
  - ▶ Provide mechanical, electrical and plumbing systems within new program spaces per District Design Standards and as supported by existing building infrastructure
  - ▶ Modernize building courtyard entryway to enliven the space and invite students into the building
- ▶ Schedule
  - ▶ Construction start 4<sup>th</sup> Quarter 2016; Completion 4<sup>th</sup> Quarter 2017

# College of San Mateo Student Life & Learning Communities Modernization (B17)

---



---

▶ "Facilities Excellence"

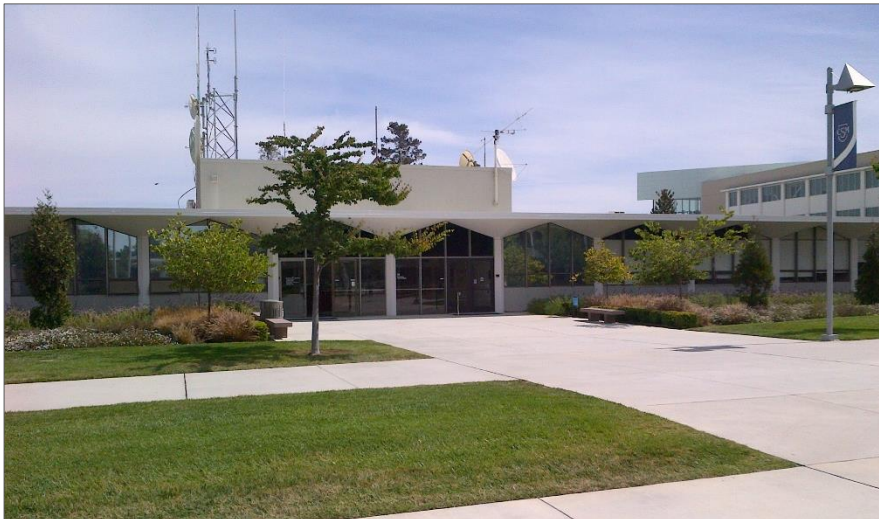
# College of San Mateo Engineering & Technology (B19)

---

- ▶ Budget \$60,000,000
  - ▶ Measure H
- ▶ Project Scope
  - ▶ Demolition of (E) Engineering & Technology Building (B19) 72,853 GSF and (E) Fire Technology Building (B12)
  - ▶ Construct a New 53,232 GSF Engineering & Technology Building (B19)
  - ▶ Elements of the Program: Classrooms, Offices, Labs, Emerging Technology Labs including Tech Shop spaces
  - ▶ Modernize Edison Lot/ Building 20 area (pending litigation clearance)
- ▶ Schedule
  - ▶ Construction to start 1<sup>st</sup> Quarter 2018; Completion 3<sup>rd</sup> Quarter 2019

# College of San Mateo Engineering & Technology (B19)

---



---

▶ "Facilities Excellence"

# Skyline College - Middle College

---

- ▶ Budget \$50,000
  - ▶ Measure A
- ▶ Project Scope
  - ▶ Creation of a Middle College Program in existing classroom space
  - ▶ New office for the Director, counselors and support staff
  - ▶ Conversion of a classroom into two counselor offices
  - ▶ Conversion of a storage room into a reception/work space
- ▶ Schedule
  - ▶ 3<sup>rd</sup> Quarter 2015

# Skyline College - Middle College

---



*Before*

---

▶ "Facilities Excellence"

# Skyline College - Middle College



*After*



"Facilities Excellence"



# Skyline College Social Science and Creative Arts Building (B1)

---

- ▶ Budget \$110,000,000
  - ▶ Measure H
- ▶ Project Scope
  - ▶ Demolition of (E) Social Science and Creative Arts Building (B1)  
72,853 GSF (79,453 – 6,600)
  - ▶ Retain and Protect 6,600 GSF of Level One during demolition and construction
  - ▶ Construct a New ~100,000 GSF Social Science and Creative Arts Building (B1)
  - ▶ Elements of the Program: 520 Seat New Theater w/Orchestra Pit, Scene Shop, Gallery, Music Choral Room/Recital Hall, Concert Band Room, Labs (Piano and MDI), Recording Rooms, Sculpture, Digital Arts, Art History, 2D Design, Photography, Social Sciences, Quad (Plaza) Extension
- ▶ Schedule
  - ▶ Construction Demolition 1<sup>st</sup> Quarter 2018; Completion 3<sup>rd</sup> Quarter 2020

# Skyline College Social Science and Creative Arts Building (B1)

---



---

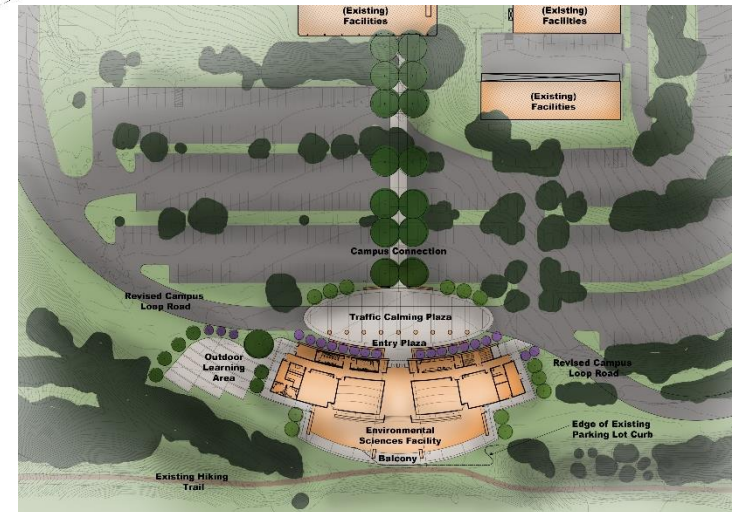
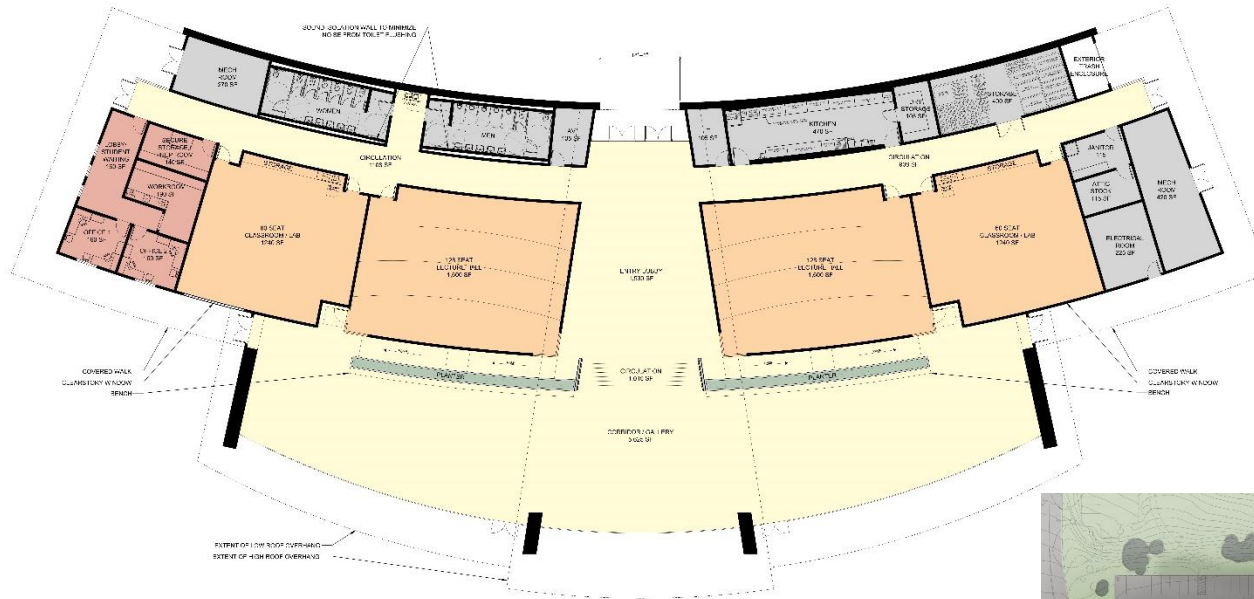
▶ "Facilities Excellence"

# Skyline College Environmental Studies Building (B12N)

---

- ▶ Budget \$30,700,000
  - ▶ Measure H
- ▶ Project Scope
  - ▶ Construct a New 21,060 GSF Environmental Studies Building (B12N)
  - ▶ Elements of the Program: (2) Flexible (Flat) 60 seat/each Classrooms, (2) Lecture (Tiered) 128 seat/each Classrooms, Event Space for 250 Occupants, Catering Kitchen, Entrance Lobby, Offices, Outdoor Lab, Connecting Corridor to Main Campus, Optimal Building Location (Panoramic View of Pacific Ocean)
- ▶ Schedule
  - ▶ Construction 1<sup>st</sup> Quarter 2017; Completion 1<sup>st</sup> Quarter 2018

# Skyline College Environmental Studies Building (B12N)



"Facilities Excellence"

# Districtwide Exterior Lighting Upgrade

---

- ▶ Budget

- ▶ \$3,000,000

- Energy Efficiency Funds

- Prop 39

- PG&E Incentives

- Measure H

- ▶ Project Scope

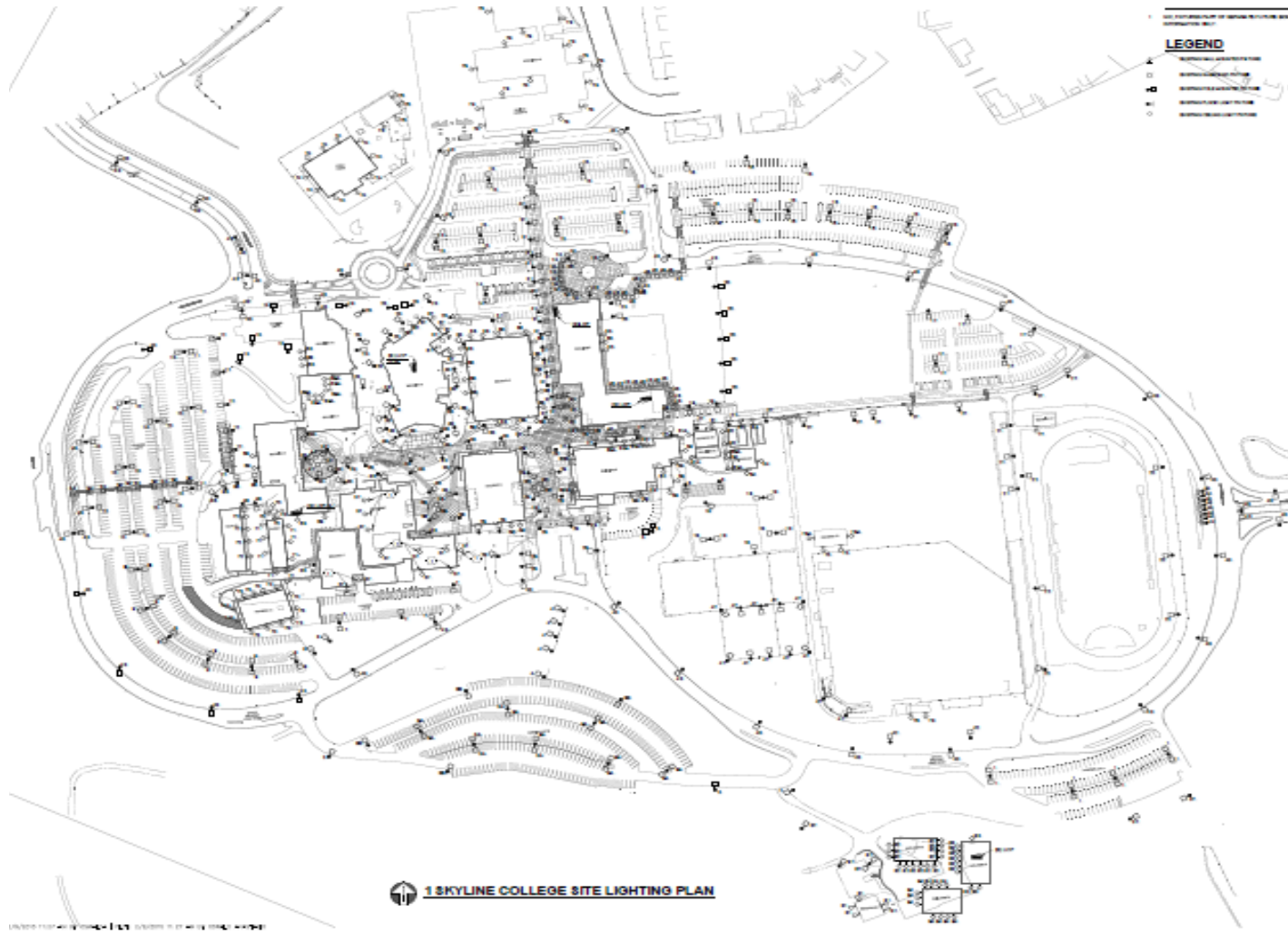
- ▶ Design-Build project to upgrade 1,100 exterior fixtures and lighting controls at all three campuses.

- ▶ Schedule

- ▶ DBE Design phase started: 2<sup>nd</sup> Quarter 2015

- ▶ Estimated Construction Completion: 2<sup>nd</sup> Quarter 2016

# Districtwide Exterior Lighting- Skyline Campus



▶ "Facilities Excellence"

# Districtwide Utility Measurement & Verification Project

---

- ▶ Budget

- ▶ \$2,500,000

- Measure A

- ▶ Project Scope

- ▶ Design-Build project to provide an energy measurement and verification and management system, including replacing all outdated building management system controllers and software system, and adding utility meters to most buildings throughout the District, and adding an Energy Information System to monitor energy usage.

- ▶ Schedule

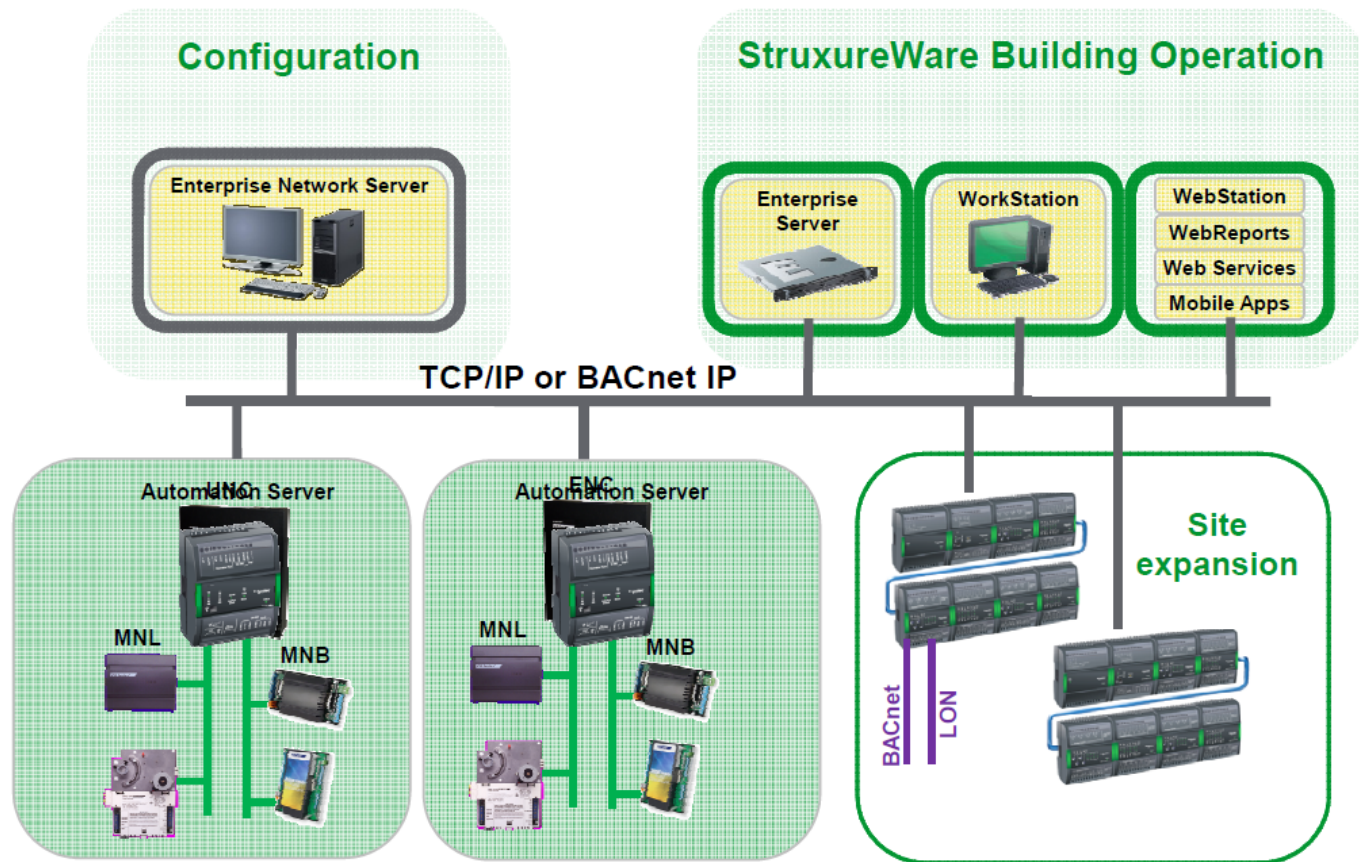
- ▶ DBE Design phase started: 4<sup>th</sup> Quarter 2014

- ▶ Construction started: 1<sup>st</sup> Quarter 2015; 45% complete

- ▶ Estimated Construction Completion: 2<sup>nd</sup> Quarter 2016

# Districtwide Utility Measurement & Verification Project

## Converted System Architecture





# Question & Answer

---

José D. Nuñez, LEED AP  
Vice Chancellor

Facilities Planning, Maintenance & Operations

[nunezj@smccd.edu](mailto:nunezj@smccd.edu)

Chris Strugar-Fritsch  
Director of Capital Projects  
[strugarfritschc@smccd.edu](mailto:strugarfritschc@smccd.edu)

[www.smccd.edu/facilities](http://www.smccd.edu/facilities)