



SAN MATEO COUNTY
COMMUNITY
COLLEGE DISTRICT

Bond Oversight Committee CIP Project Update

June 4, 2015

CIP3 Planning Efforts Currently Underway

- ▶ Scheduling Consultant – Completed
- ▶ Cost Estimating Consultant – Completed
- ▶ California Environmental Quality Act (CEQA) – Winter 2015
- ▶ Construction Management – In Contract Negotiation
- ▶ Design Standards Revision – Completed
- ▶ Swing Space Planning (ONUMA) – In progress
- ▶ Architect and Engineer (A&E) Selection for Design of First Wave Projects – Completed
- ▶ 2015 Annual General Contractor and Major Subcontractor Prequalification Process - Completed

Overview of Sustainability Efforts

- ▶ Energy projects undergo total cost of ownership analysis
- ▶ Operations and Maintenance protocol are incorporated to facilitate long term savings and sustainability
- ▶ Incentives, rebates, grants and other external funding support is crucial to supporting these projects
- ▶ Staff is encouraged and trained to continuously improve and apply best practices in operations

Cañada College and CSM College Theater House Lights Upgrade

- ▶ Project Budget

 - ▶ \$ 350,000

- ▶ Project Scope

 - ▶ Districtwide project to update the House Lights at both the CSM and Cañada College Theaters with LED retrofit kits for increased longevity and energy efficiency.
 - ▶ New lighting controls were installed at both campuses

- ▶ Schedule

 - ▶ Construction: Work is complete, project in close-out

Cañada / CSM College Theater House Light Retrofit Project



Cañada College



College of San Mateo

Before



CSM Theater House Lights



Cañada College



College of San Mateo

After

CSM- Choral Room Upgrade

- ▶ Project Budget

- ▶ \$150,000

- ▶ Project Scope

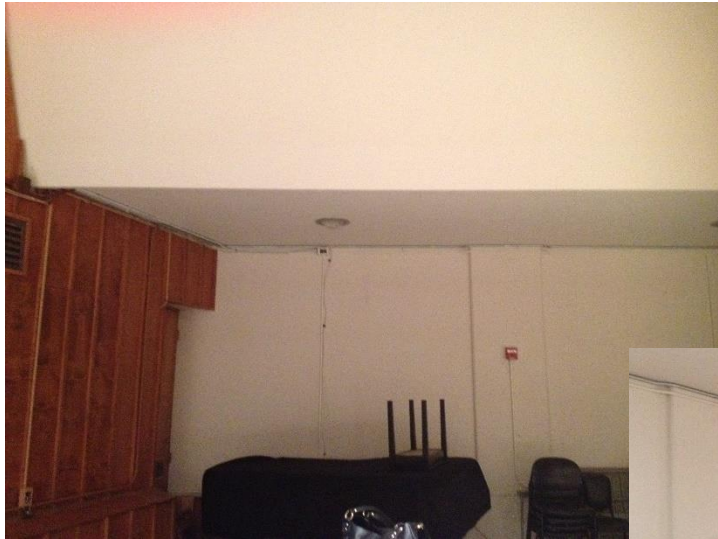
- ▶ Upgraded lighting with spot lights on the performance area with dimming capability
 - ▶ Flooring replaced in the performance area with a product that is suitable for a piano to be moved frequently
 - ▶ SMART classroom upgrades to meet the District Standard
 - ▶ Enhanced speakers for performance
 - ▶ Fresh paint to liven the event space
 - ▶ New cabinet with locking capabilities and specialized equipment to support the music program

- ▶ Schedule

- ▶ Complete

CSM - Choral Room

Before



CSM - Choral Room

After



District Office – AV Upgrades to Conference Rooms

▶ Project Budget

- ▶ \$215,000

▶ Project Scope

- ▶ Upgrade to the Audio Visual within two conference rooms (Cypress and Sequoia) and the Board Room
 - High Definition TV installed within the Board Room
 - LCD Screens installed within the conference rooms
 - New Click Share software installed in Cypress and Sequoia so that multiple users can easily project from their laptop or tablet.
 - New microphones, unobtrusive monitors, upgraded LED lighting and permanently mounted name plates for Board Members and Presidents added to the Board Room

▶ Schedule

- ▶ Complete

District Office – AV Upgrades to the Board Room

Before



District Office – AV Upgrades to the Board Room

After



District Office – AV Upgrades to the Conference Room

Before



District Office – AV Upgrades to the Conference Room

After



District Wide Gas Valve Seismic Auto-Shut-off Project

- ▶ Project Budget

 - ▶ \$160,000

- ▶ Project Scope

 - ▶ The District contracted with a plumbing contractor to install automatic shut-off gas valves in a seismic event to enhance safety in case of earthquake

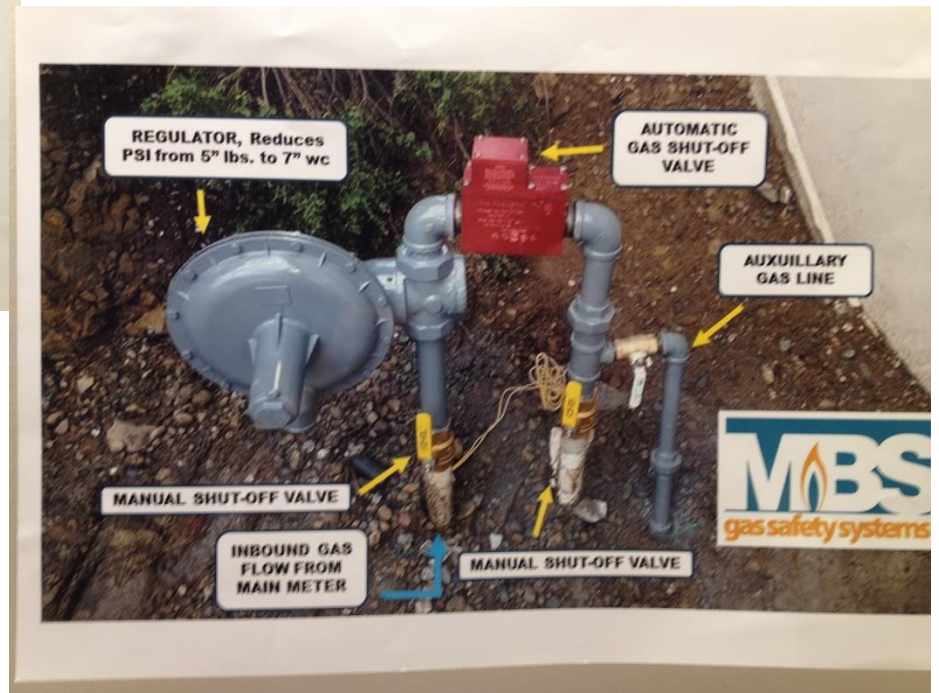
 - ▶ All three campuses were surveyed and valves were upgraded and installed where necessary

 - ▶ All work was carefully coordinated with the campus facilities staff and PG&E to minimize campus disruption

- ▶ Schedule

 - ▶ Work completed, project in close-out

District Wide Gas Valve Seismic Auto-Shut-off Project



CSM North Gateway Phase II

- ▶ Project Budget
 - ▶ \$15,600,000 (\$6M Measure A and \$9.6M State Capital Outlay)
- ▶ Project Scope
 - ▶ Demolition of existing buildings #21 – 29.
 - ▶ Creation of new Gateway Plaza, renovation of existing parking lots 6 A-D.
 - ▶ New Plaza and amphitheater, pedestrian pathways, landscaping and energy efficient LED parking lot lights.
- ▶ Schedule
 - ▶ Construction: Contractor Default Termination on 8/29/14, Surety and District executed Takeover agreement on 1/28/15. Takeover Contractor is now on board and has resumed construction. Substantial completion is anticipated to be August 5, 2015.

CSM North Gateway

▶ Construction Status

- ▶ Initial demolition phase was completed
- ▶ Construction initiated June 2013
 - ▶ Portion of new AC parking lot pavement work performed
 - ▶ Light Poles and conduits, fixtures and cabling installations in progress
 - ▶ Concrete Placement at Amphitheater seating and 'Plaza of the Sun', sidewalks performed –defective work is undergoing remediation.
 - ▶ Portion of landscape areas and planting completed
 - ▶ Overlook Wall work initiated
- ▶ Project Final Completion date – estimated to be 9/3/15.

▶ Contract Status

- ▶ \$5,986,889 (approx. 80 % of total contract) paid through end of June 2014
- ▶ \$719,055 potentially available to Surety to complete project exclusive of \$289,785 retention paid into escrow.
- ▶ Completion contractor has submitted their first pay application – allowing for the just withholds, net payment is \$14,575.

CSM North Gateway – before Construction



CSM North Gateway – current Construction



Skyline College Upper Soccer Trench Drain

- ▶ Budget \$110,000
 - ▶ Measure A
- ▶ Project Scope
 - ▶ Install 400 lineal feet of trench drain and outlets along north sideline
 - ▶ Collects excess surface runoff and diverts water away from the field
 - ▶ Prevents ponding on the turf during heavy rains
- ▶ Schedule
 - ▶ Construction June 1 through June 12, 2015

Skyline College Upper Soccer Trench Drain

► Under construction



Cañada College and CSM Roadway and Parking Lot Fixture LED Retrofit

- ▶ Budget \$1,300,000
 - ▶ \$450,000 Measure A
 - ▶ \$850,000 Energy Efficiency Funds/ Prop 39
- ▶ Project Scope
 - ▶ Design-Build project to replace 261 pole mounted fixtures and install new lighting controls at Cañada College and CSM.
- ▶ Schedule
 - ▶ Construction Completion –
 - Fixture installation is complete. Controls programming to be completed in June, 2015.

Cañada College Roadway and Parking Lot Fixtures



Districtwide Exterior Lighting Upgrade

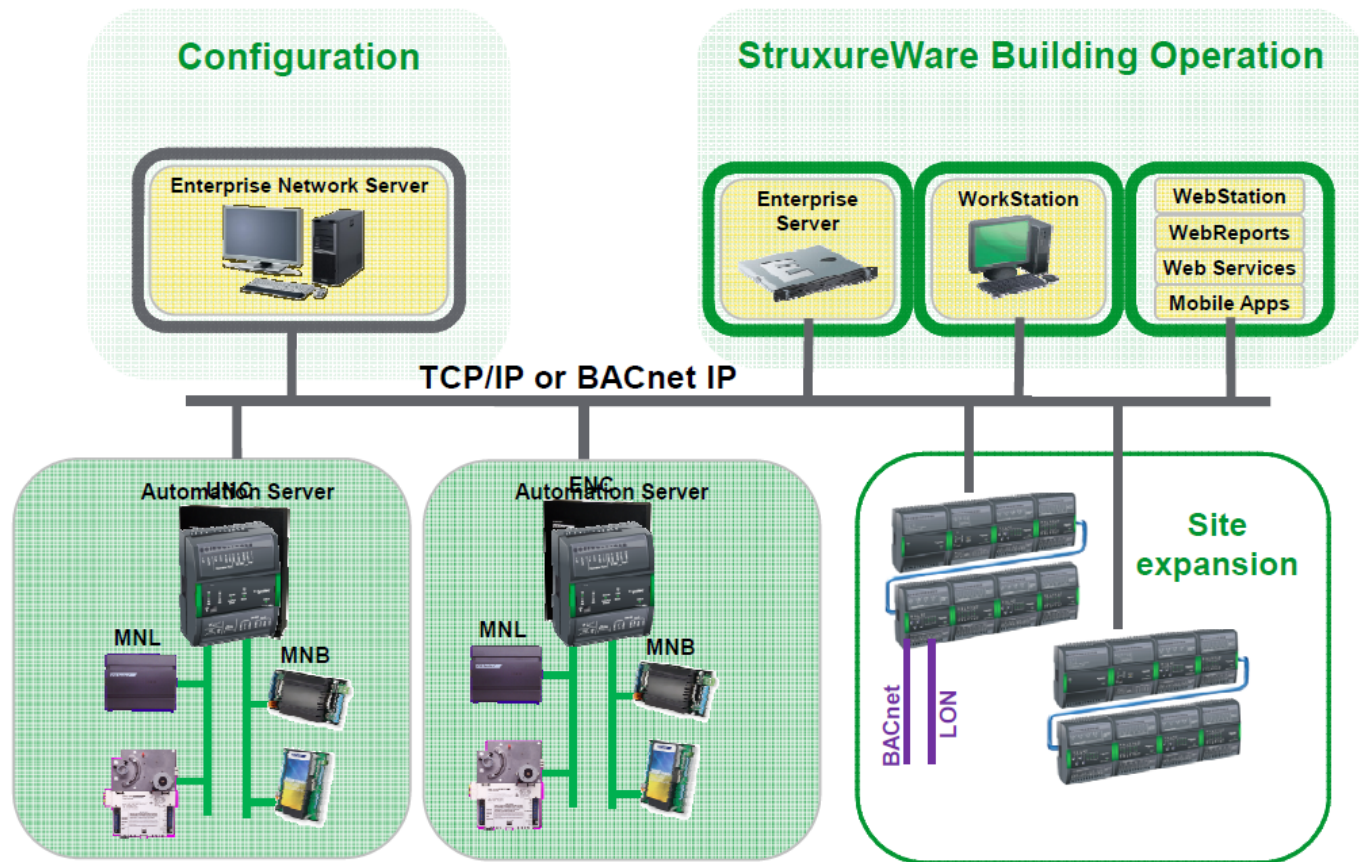
- ▶ Budget
 - ▶ \$2,950,000 Energy Efficiency Funds/ Prop 39 / PG&E Incentives/ Measure A
- ▶ Project Scope
 - ▶ Design-Build project to upgrade 1,100 exterior fixtures and lighting controls at all three campuses.
- ▶ Schedule
 - ▶ DBE Design phase started: May 26, 2015
 - ▶ Estimated Construction Completion: April, 2016

Districtwide Utility Measurement & Verification Project

- ▶ Budget
 - ▶ \$2,500,000 Measure A Funds
- ▶ Project Scope
 - ▶ Design-Build project to provide an energy measurement and verification and management system, including replacing all outdated building management system controllers and software system, and adding utility meters to most buildings throughout the District, and adding an Energy Information System to monitor energy usage.
- ▶ Schedule
 - ▶ DBE Design phase started: 11/18/2014
 - ▶ Construction started: 1/26/2015; 40% complete
 - ▶ Estimated Construction Completion: Late 2015

Districtwide Utility Measurement & Verification Project

Converted System Architecture



Cañada College Solar Project

- ▶ **Project Description:** 1,250,000 watts of clean energy generated annually
- ▶ **Total investment:** \$5.8 Million
- ▶ **Annual Savings:** \$~275,000
- ▶ **Simple Payback period:** ~16 years
- ▶ **Incentives and funding:**
 - ▶ ~\$800,000 over 5 years from California Solar Initiative and over ~\$553,000 from Proposition 39
- ▶ **Benefits:** Projected to provide over 50% of campus electrical demand and reduce corresponding electrical costs.



Cañada College Solar Project

- ▶ **Project Status: Construction complete. Project in close-out**
- ▶ **Site maintenance includes use of sheep to reduce vegetation by grazing, a safe and sustainable solution**



Cañada College Solar Photovoltaic Project

Solar PV Site, Construction Complete



Summary

Project	Investment	Incentives & Grants	Annual Savings	Other Benefits
Cañada Solar	\$5.8 Million	~\$1.3 Million	~\$265,000	GHG Reductions; Teaching tool
District Wide Lighting	~\$2.5 Million	~\$685,000	~\$100,000	Safety and Security; Reduced Maintenance
Measurement & Verification	\$2.5 Million	~\$600,000	~\$500,000	Shift from Reactive to Proactive M&O
EV Charging Stations	\$242,000	\$71,000	N/A	GHG Reductions
Total	~\$9.75 Million	~\$2.6 Million	~\$800,000	

Other Efficiency Efforts

- ▶ **Water Efficiency Program: Reduce Water Usage District wide by 25%**
 - ▶ Currently at 23% reduction with ~\$50K investment saving \$200,000 annually thus far.
- ▶ **Storm Water Management Program: Preserve and protect the surrounding water ways**
 - ▶ Proactively managing the Quantity and Quality of water entering the storm water system
 - ▶ Avoided costly Water Quality Oversight of ~\$15K Annually
- ▶ **Strategic Energy Plan: Reduce and manage energy usage while examining opportunities for renewables**
 - ▶ Continuous identification and implementation of energy Conservation, Management and Generation Measures
 - ▶ Working to cut net energy use District wide by 30% over the next three years and ultimately toward net zero energy

Question & Answer

www.smccd.edu/facilities

Karen Powell
Executive Director
Facilities Planning & Operations

(650) 574-6512

powellk@smccd.edu

