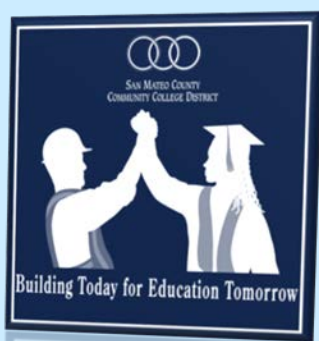


**COLLEGE OF SAN MATEO AND SKYLINE COLLEGE ROOF
REPLACEMENT PROJECT
CSM COLONNADES & DISTRICT OFFICE DECK
WATERPROOFING PROJECT**

**COLLEGE OF SAN MATEO, SKYLINE COLLEGE
MANDATORY PRE-BID CONFERENCE**

APRIL 6, AND APRIL 10, 2015

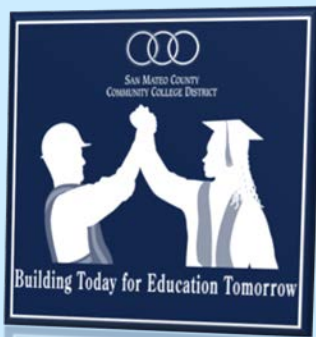




- **WELCOME AND INTRODUCTIONS**
- **PREBID CONFERENCE ADMINISTRATION**
- **BID & CONTRACT AWARD SCHEDULE**
- **PROJECT OVERVIEW**
- **WORK SEQUENCE**
- **OCCUPIED CAMPUS COORDINATION REQUIREMENTS**
- **OCIP**
- **BID & CONTRACT DOCUMENTS**
- **QUESTION & ANSWER**



AGENDA



- **PAULA REYES, PROJECT MANAGER, FACILITIES PLANNING DEPARTMENT**
- **PEPPER POWELL, PROJECT COORDINATOR, FACILITIES PLANNING DEPARTMENT**
- **JOSÉ NUÑEZ, VICE CHANCELLOR OF FACILITIES PLANNING MAINTENANCE & OPERATIONS**
- **KAREN POWELL, EXECUTIVE DIRECTOR FACILITIES PLANNING & OPERATIONS**
- **CHRIS STRUGAR-FRITSCH, DIRECTOR OF CAPITAL PROJECTS FACILITIES PLANNING DEPT.**
- **MICHELE RUDOVSKY, FACILITIES MANAGER, COLLEGE OF SAN MATEO**
- **PHIL FONG, CHIEF ENGINEER, COLLEGE OF SAN MATEO**
- **JOHN DOCTOR, FACILITIES MANAGER, SKYLINE COLLEGE**
- **JUAN LOPEZ, CHIEF ENGINEER (DETAIL), SKYLINE COLLEGE**
- **YANELY PULIDO, CONTRACTS MANAGER**

- **ROB WORTHING, DESIGN ENGINEER, ALLANA, BUICK & BERS, INC.**
- **JEROME JEFFERS, ALLANA BUICK & BERS, INC.**
- **ELI MARGALIT, MECHANICAL ENGINEER, ALLANA BUICK & BERS**

- **PETER HEMPEL, SWINERTON MANAGEMENT & CONSULTING (CONSTRUCTION MANAGER)**
- **THOMAS FAKNER, SWINERTON MANAGEMENT & CONSULTING (CONSTRUCTION MANAGER)**

- **SHARON MCBRIAN, KEENAN & ASSOCIATES (OCIP)**
- **KURT DODGE, CIS INC. (INSPECTOR OF RECORD)**

MEET THE TEAM





- **MANDATORY CONFERENCE**

(ATTENDANCE AT ONLY ONE IS REQUIRED):

- **APRIL 6, 2015 – 1:30 PM**

- **SKYLINE COLLEGE: B6, RM 203**

- **APRIL 10, 2015 – 1:00 PM**

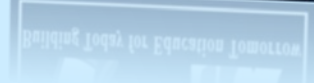
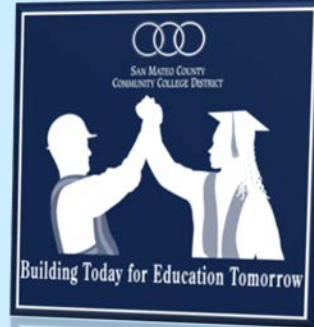
- **COLLEGE OF SAN MATEO, B10, RM 468**

- **PLEASE SIGN IN**

- **PREBID CONFERENCE ATTENDANCE RECEIPT**



PREBID CONFERENCE ADMINISTRATION



CSM / SKY ROOF REPLACEMENT PROJECT SCHEDULE

- PLANS AVAILABLE: **APRIL 6, 2015**
- MANDATORY PREBID CONFERENCES:
MON, APRIL 6, AND FRI, APRIL 10, 2015
- LAST DAY FOR WRITTEN RFI'S: **ROOFS: FRI, APRIL 17, 2015;**
- LAST DAY THAT ADDENDA WILL BE ISSUED: **ROOFS: TUES, APRIL 21;**
- BIDS DUE @ **SMCCCD DISTRICT OFFICE:**
ROOFS: FRIDAY, APRIL 24, 2:00PM.
- SMCCCD BOARD OF TRUSTEES MEETING (ANTICIPATED CONTRACT APPROVAL): **MAY 13, 2015**
- ANTICIPATED NOTICE OF AWARD: **MAY 14, 2015**
- CONTRACT DOCUMENTS DUE FROM AWARDED CONTRACTOR:
NO LATER THAN MAY 26, 2015
- NOTICE TO PROCEED: **MAY 27, 2015**



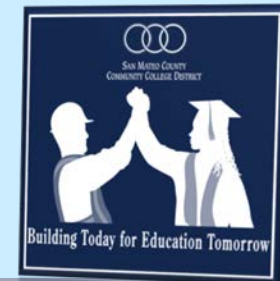
**BID & CONTRACT AWARD SCHEDULE
MAJOR MILESTONES**



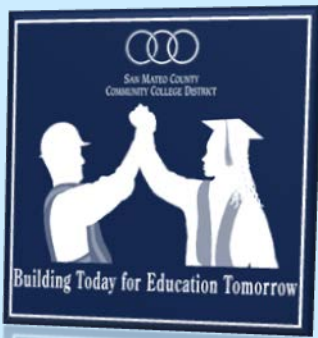
CSM COLONNADES & DISTRICT OFFICE DECK WATERPROOFING

PROJECT SCHEDULE

- PLANS AVAILABLE: **APRIL 6, 2015**
- MANDATORY PREBID CONFERENCES:
MON, APRIL 6, AND FRI, APRIL 10, 2015
- LAST DAY FOR WRITTEN RFI'S:
COLONNADES: WED, APRIL 22, 2015
- LAST DAY THAT ADDENDA WILL BE ISSUED:
COLONNADES: FRIDAY, APRIL 24
- BIDS DUE @ **SMCCCD DISTRICT OFFICE:**
COLONNADES: TUES, APRIL 28, 2:00 PM
- SMCCCD BOARD OF TRUSTEES MEETING (ANTICIPATED CONTRACT APPROVAL): **MAY 13, 2015**
- ANTICIPATED NOTICE OF AWARD: **MAY 14, 2015**
- CONTRACT DOCUMENTS DUE FROM AWARDED CONTRACTOR: **NO LATER THAN MAY 26, 2015**
- NOTICE TO PROCEED: **MAY 27, 2015**



BID & CONTRACT AWARD SCHEDULE
MAJOR MILESTONES

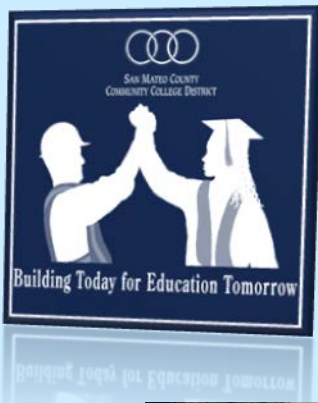


**COLLEGE OF SAN MATEO
SAN MATEO COUNTY COMMUNITY COLLEGE DISTRICT
1700 WEST HILLSDALE BLVD.
SAN MATEO, CA 94402**



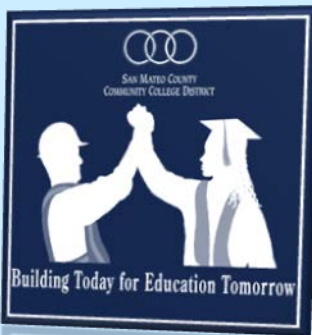
COLLEGE OF SAN MATEO OVERVIEW





COLLEGE OF SAN MATEO OVERVIEW

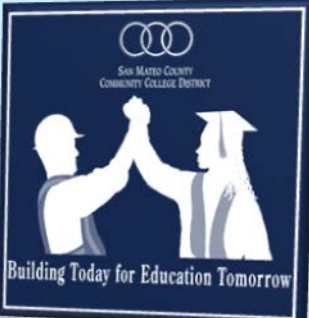




SKYLINE COLLEGE
3300 CAMPUS DR.
SAN BRUNO, CA 94066

SKYLINE COLLEGE OVERVIEW





BUILDING 16

Campus Map

One-day Permits
 \$2 per day. Valid only during class hours from 7:00 am to 10:00 pm
 Permit machines indicated by D on the map: Hillsdale (Lot 1), Beethoven (Lot 2), Galileo (Lot 6), and Stadium (Lot 11)

Visitor Parking
 Visitors to campus may park in PayBySpace visitor parking in Beethoven Lot 2A and 2D between 7:00 am and 5:00 pm. Visitors must purchase a visitor permit (\$1 per hour) at the PayBySpace permit machines located in both lots (indicated by V on the map).

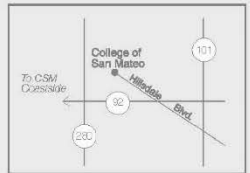
Student Parking
 Hillsdale (Lot 1), Beethoven (Lot 2), Galileo (Lot 6), Bulldog (Lot 9) or Stadium (Lot 11)

Staff Parking
 Beethoven (Lot 2B), DaVinci (Lot 3), Socrates (Lot 4), Marie Curie (Lot 5), Galileo (Lot 6 Staff), Edison (Lot 7*), Sandbox (Lot 10)
 (* indicates lot available for student parking after 5 pm only, permit required)

Restricted Parking
 Olympian (Lot 12) staff and members of San Mateo Athletic Club, and patrons and clients of Cosmetology and Dental programs.

Disabled Parking
 By special permit only (contact Disability Resource Center, Building 16, Room 150, 574-6438)

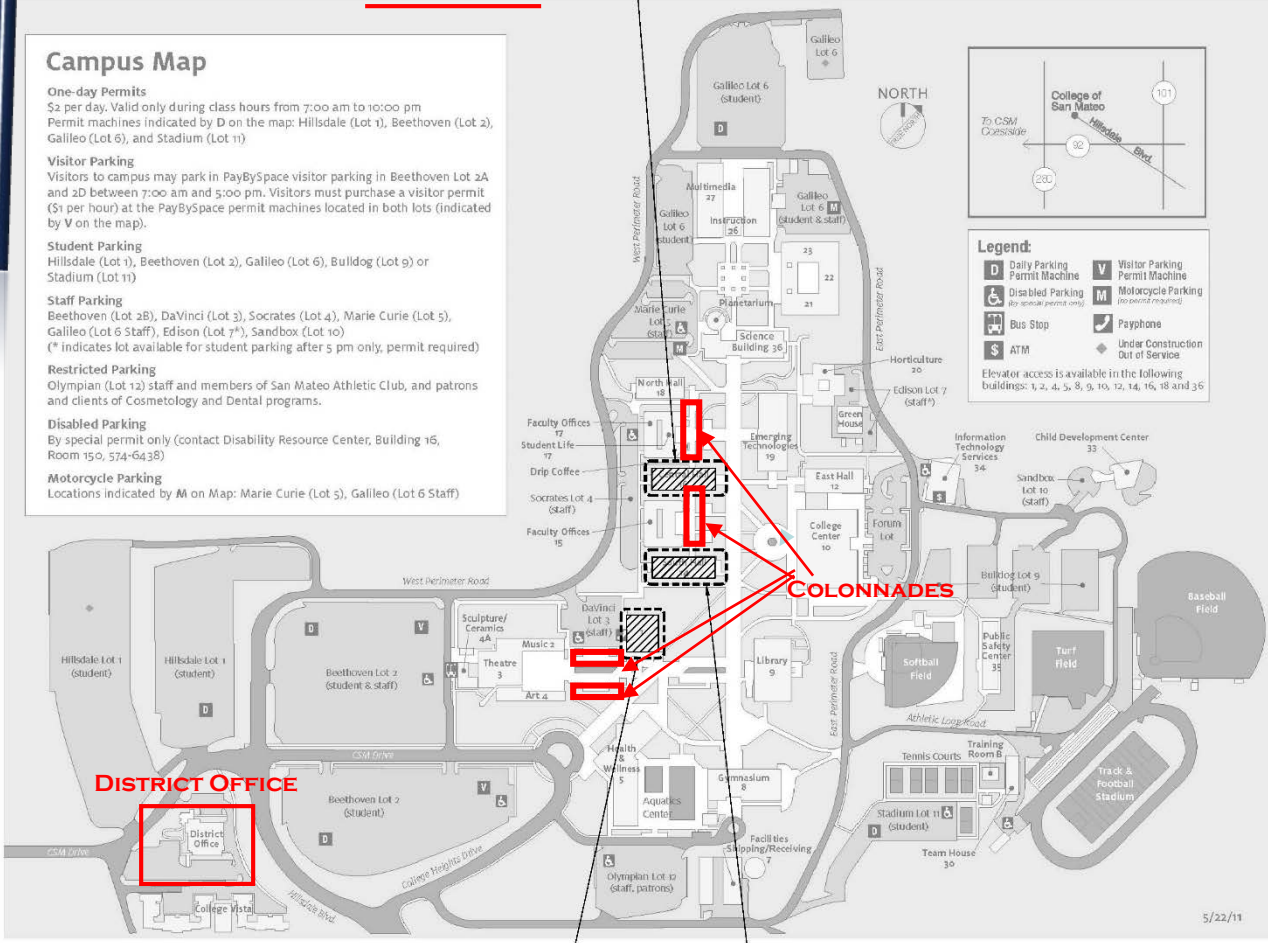
Motorcycle Parking
 Locations indicated by M on Map: Marie Curie (Lot 5), Galileo (Lot 6 Staff)



Legend:

D	Daily Parking Permit Machine	V	Visitor Parking Permit Machine
♿	Disabled Parking (No special permit only)	M	Motorcycle Parking (No special permit)
🚌	Bus Stop	📞	Payphone
💰	ATM	⬇	Under Construction Out of Service

Elevator access is available in the following buildings: 1, 2, 4, 5, 8, 9, 10, 12, 14, 16, 18 and 36



BUILDING 1

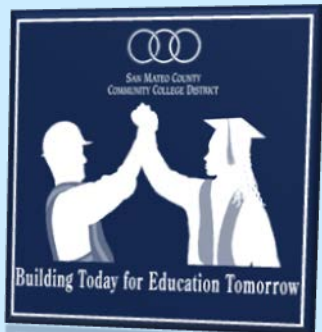
BUILDING 14

5/22/11

SWINERTON
 MANAGEMENT
 & CONSULTING

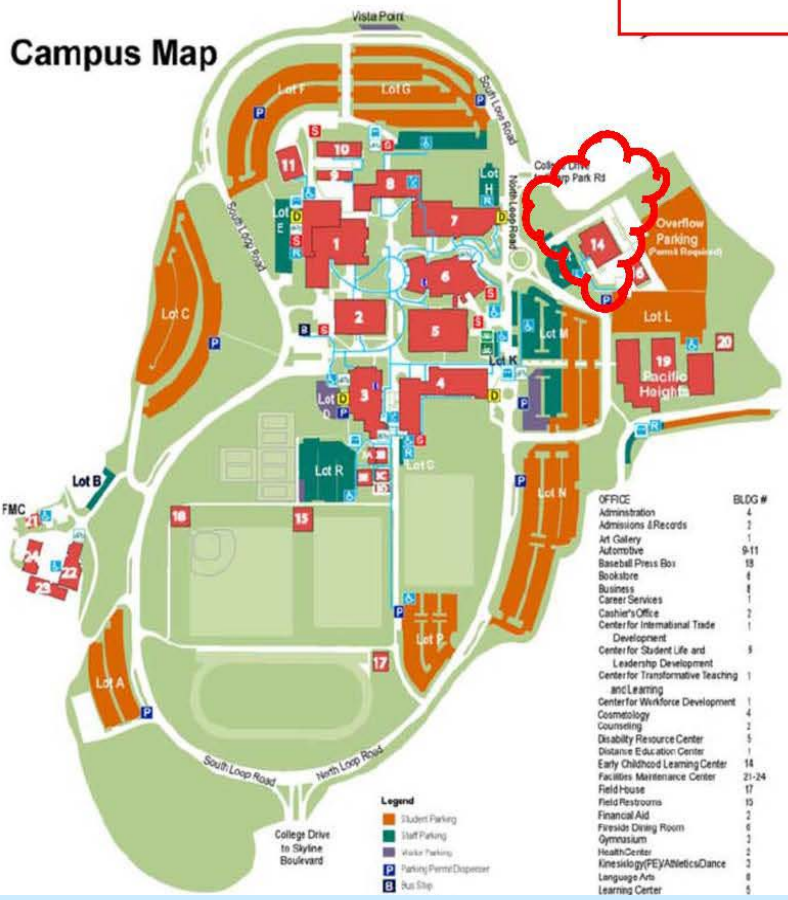


SITE PLAN: COLLEGE OF SAN MATEO

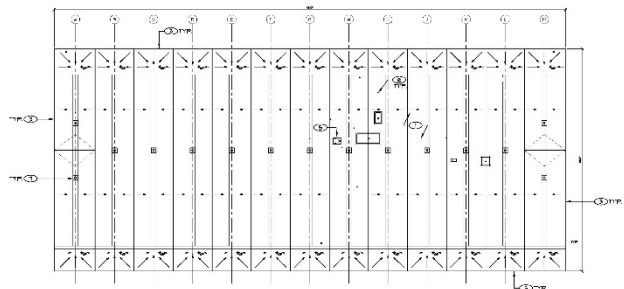


Skyline College Campus Map

Skyline College
Building 14
Roof Replacement Project



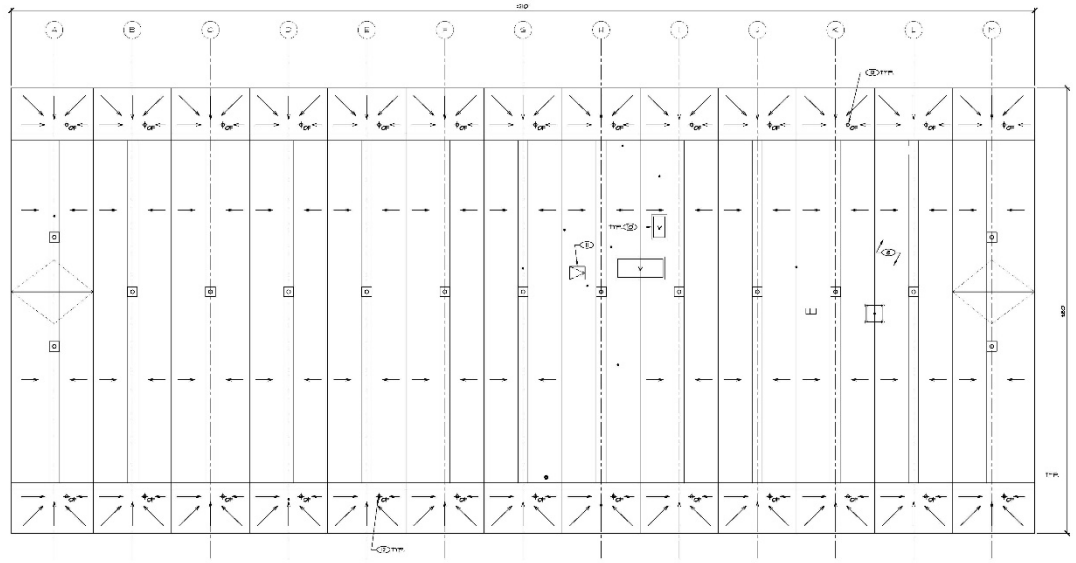
SITE PLAN: SKYLINE COLLEGE



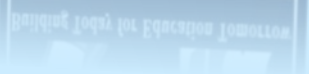
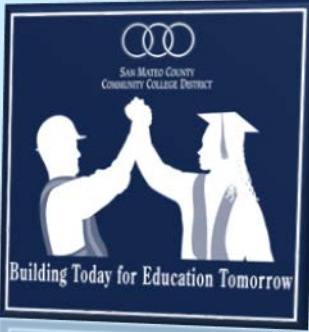
2 DEMOLITION PLAN - BUILDING 16 SCALE 1/8"=1'-0"

KEY NOTES

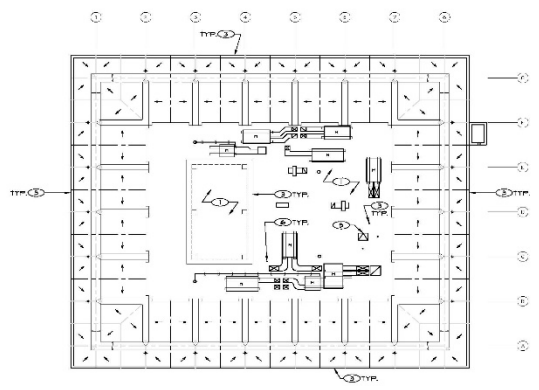
1. DEMOLISH AND DISPOSE EXISTING ROOFING SYSTEM.
2. NOT USED.
3. DEMOLISH AND DISPOSE EXISTING EXTERIOR WALL ASSEMBLY.
4. DEMOLISH AND DISPOSE EXISTING INTERIOR WALL ASSEMBLY.
5. DEMOLISH AND DISPOSE EXISTING EXTERIOR WALL ASSEMBLY.
6. DEMOLISH AND DISPOSE EXISTING EXTERIOR WALL ASSEMBLY.
7. DEMOLISH AND DISPOSE EXISTING EXTERIOR WALL ASSEMBLY.
8. PROVIDE GROUND LEVEL SINGLE-TIER ROOF SLAB WITH REINFORCING BARS.
9. NOT USED.
10. PROVIDE VENT CAPS AND AIR-RESISTANT WALL ASSEMBLY.
11. PROVIDE CURB OF AN EXISTING METAL ROOFING SYSTEM. PROVIDE BRICK ACCORDING TO THE REQUIREMENTS OF THE CONTRACT DOCUMENTS FOR ROOFING. PROVIDE ROOFING MATERIALS AND LABORERS TO BE DETERMINED BY THE CONTRACTOR. PROVIDE ROOFING MATERIALS AND LABORERS TO BE DETERMINED BY THE CONTRACTOR.
12. CONFORM TO ALL APPLICABLE CODES AND REGULATIONS.
13. NOT USED.
14. NOT USED.



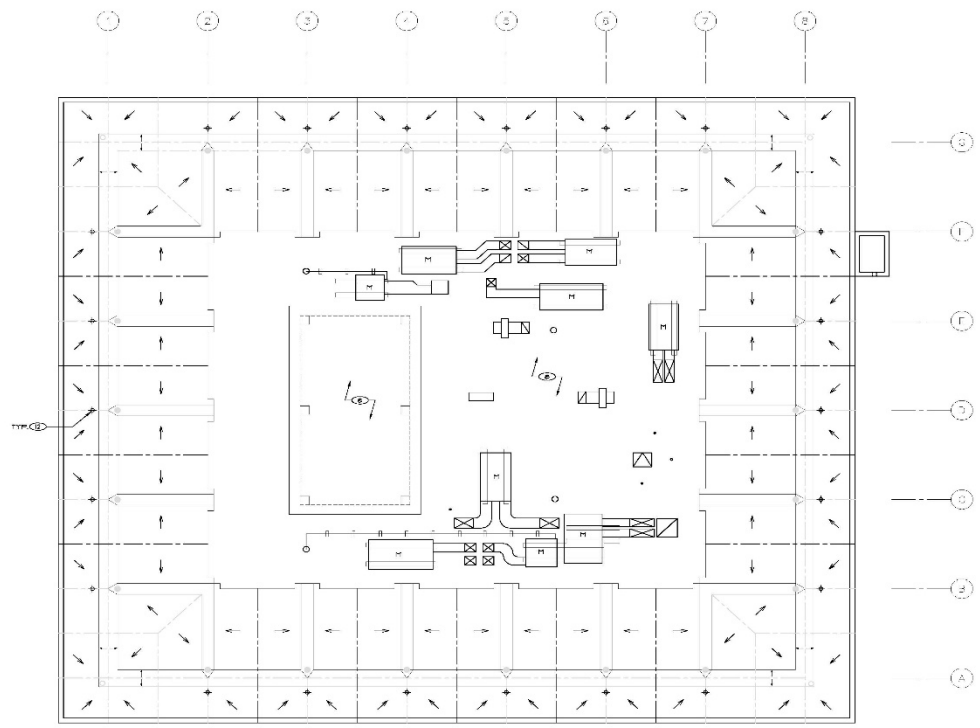
1 ROOF PLAN - BUILDING 16 SCALE 1/8"=1'-0"



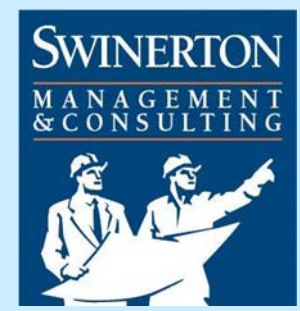
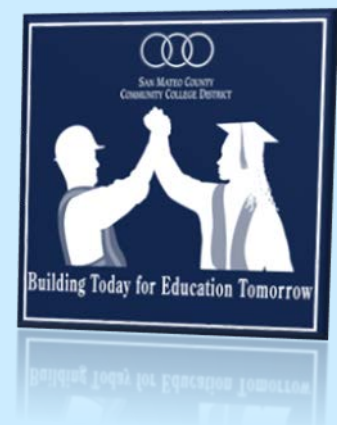
SCOPE OF WORK — BUILDING 16 ROOF



② DEMOLITION PLAN - BUILDING 1 SCALE: 1/4"=1'-0"

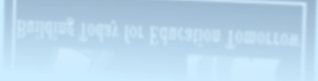
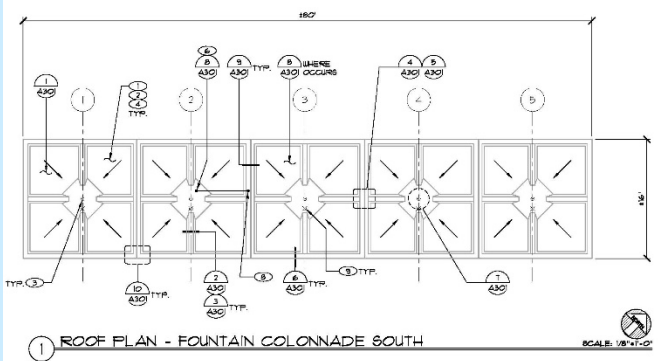
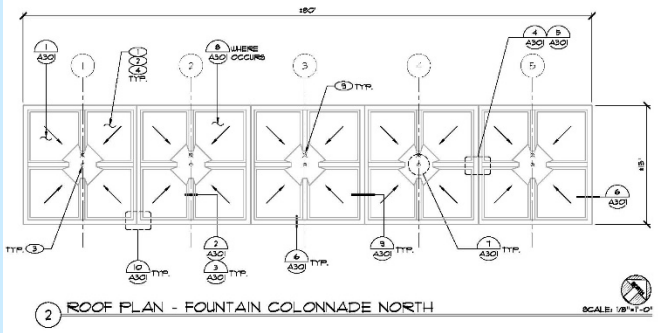


① ROOF PLAN - BUILDING 1 SCALE: 1/4"=1'-0"



SCOPE OF WORK — BUILDING 1 ROOF





SCOPE OF WORK — COLONNADES





GENERAL SHEET NOTES

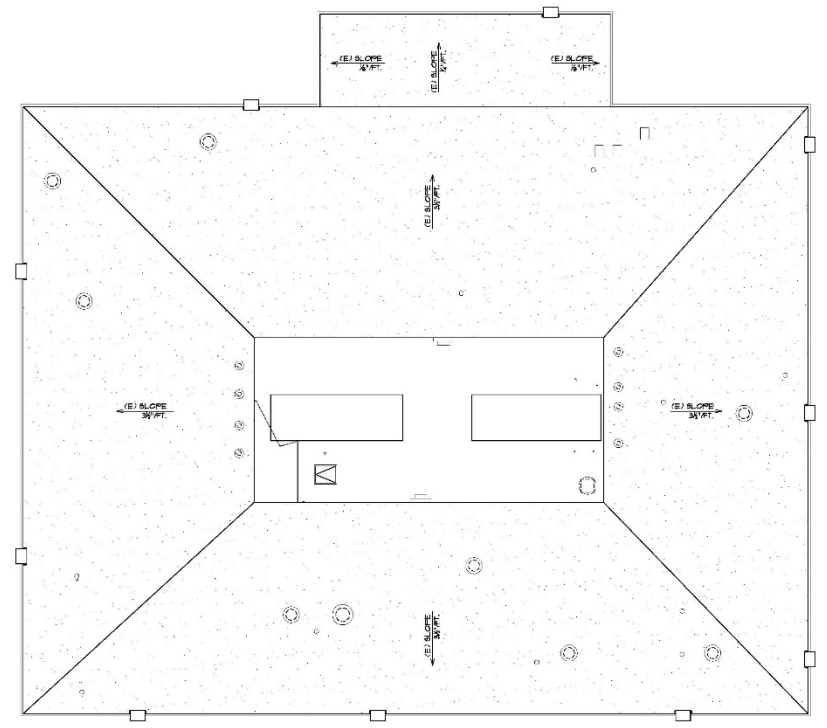
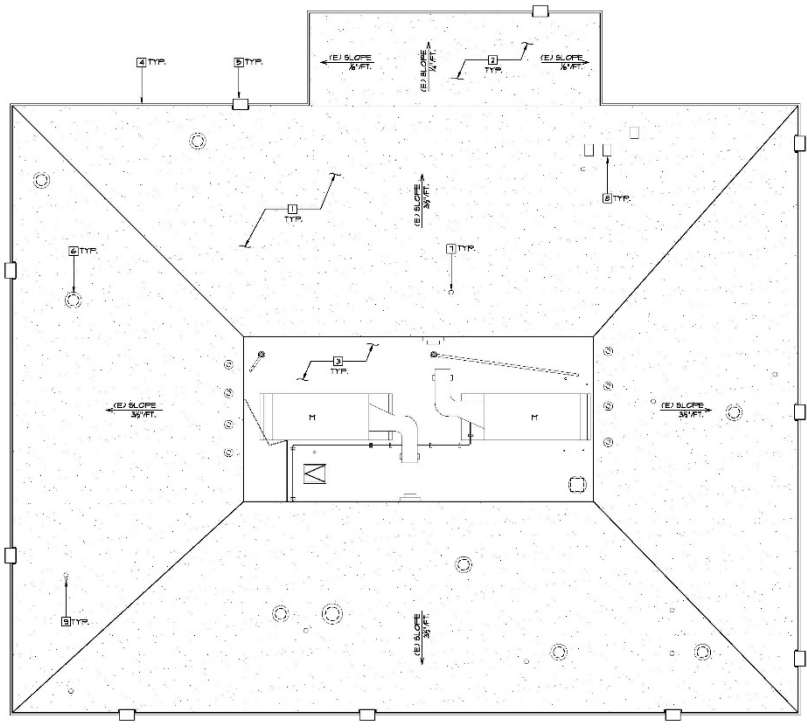
- A. SCAFFOLDING, PROTECTION, AND OTHER MOBILIZATION ARE NOT INDICATED FOR CLARITY. SEE SITE LOGISTICS PLAN FOR ADDITIONAL INFORMATION.
- B. NO MATERIAL SHALL BE STOCK PILED ON ROOF SURFACE, BEYOND THAT REQUIRED FOR IMMEDIATE USE.
- C. CONTRACTOR TO FIELD VERIFY DIMENSIONS PRIOR TO BIDDING.
- D. REPLACE DOWNSLOPED DECK BOARDS, SHEATHING, FASCIA, ETC., UNDER ALLOWANCES, WITH MATERIALS AS SPECIFIED.
- E. REMOVAL OF DEBRIS FROM ROOF TO GROUND LEVEL, SHALL BE BY CRIBS, BOX AND CRANE PICKS. CONTRACTOR TO CONSOLIDATE MATERIALS TO TRINEXE PICKS.
- F. SAFETY IS THE SOLE RESPONSIBILITY OF THE CONTRACTOR.

KEY NOTES

□ NOT USED

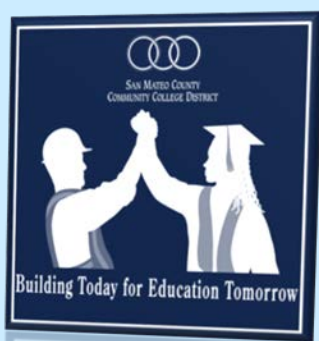
LEGEND

- ⊙ (E) PENETRATION
- ⊙ (E) ROOF DRAIN
- ⊠ (E) ROOF HATCH
- ⊞ (E) CURB
- ⊞ (E) EQUIPMENT
- ← (E) SLOPE DIRECTION
- SHEET KEYED NOTE
- (E) CONDUIT LINE
- (E) LIGHT



SCOPE OF WORK — SKY BUILDING 14 ROOF





- **ANTICIPATED CONTRACT PERIOD START - MAY 26, 2015**
 - MOBILIZATION: MAY 26, 2015
 - SUBMITTAL AND SHOP DRAWING REVIEW
 - CONSTRUCTION: JUNE 2 THROUGH AUGUST 14

- **ANTICIPATED CONSTRUCTION COMPLETION**
 - SKY B14 JUNE 12
 - CSM ROOFS AUGUST 14; COLONNADES AUGUST 14
 - DISTRICT OFFICE DECKS AUGUST 14

- **CLASSES – AUGUST 17, 2015**



CONSTRUCTION & OCCUPANCY SCHEDULE

WORK SEQUENCE





- *COLLEGE OF SAN MATEO AND SKYLINE - OCCUPIED CAMPUS*
- *COLLEGE EDUCATIONAL MISSION IS PARAMOUNT*
- *CONSTRUCTION LOGISTICS MUST ACCOMMODATE THE COLLEGE'S SCHEDULE, EVENTS AND PRIORITIES*

- **COMMUNICATION WITH CONSTRUCTION MANAGER**
- **WEEKLY OWNER/ARCHITECT/CONTRACTOR MEETING**
- **SITE UTILIZATION PLAN – WEEKLY UPDATES**
- **CONCURRENT PROJECT COORDINATION**
 - UTILITY METER WORK WITHIN MECHANICAL ROOMS OF MOST BUILDINGS, INCLUDING 1, 14 AND 16
- **PROTECT EXISTING UTILITIES**
 - STUDY AS-BUILTS
 - FIELD REVIEW WITH CHIEF ENGINEER
- **NOISY WORK RESTRICTIONS, MUST MITIGATE IMPACTS TO CLASSES - LESS CLASS ACTIVITY BETWEEN 3 – 6 P.M. M - F, AND ALL DAY ON FRIDAYS AND SATURDAY 8:00 A.M. – 1:00 P.M**
- **ADVANCE NOTICE – UTILITY SHUTDOWNS/ACCESS INTERRUPTIONS**
- **SIGNAGE – TRAFFIC CONTROL/PEDESTRIAN RE-DIRECT**
- **CONTRACTOR PARKING – PARKING LOTS 2, LOT 4 FOR JOB TRUCKS ONLY**
- **STAGING AND LAYDOWN AREAS – PARKING LOT 4 SOCRATES**
- **SAFETY –**
 - LOCAL WORK AREA ENCLOSURE FENCING, OVERHEAD PROTECTION**
 - SITE SAFETY SIGNAGE**
 - PRIME CONTRACTOR POINT OF CONTACT ON SITE – AT ALL TIMES**



OCCUPIED CAMPUS LOGISTICS



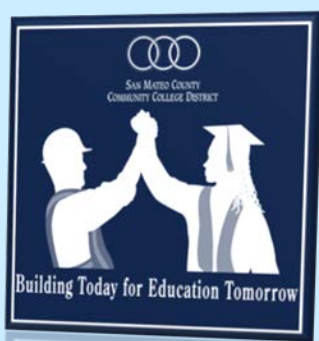
KEENAN & ASSOCIATES:

- DEFINITION OF OCIP
- BIDDING REQUIREMENTS: INSURANCE QUALIFICATION FORM AND EVIDENCE OF IIPP
- CONTRACTOR SAFETY AND HOW TO QUALIFY FOR OCIP
 - SERIOUS AND WILLFUL VIOLATIONS
 - IIPP
 - EMR
- OFF-SITE INSURANCE AND AUTO LIABILITY COVERAGE
- BASE BID ***SHALL NOT*** INCLUDE COSTS FOR INSURANCE COVERAGE PROVIDED UNDER OCIP



OCIP

(OWNER CONTROLLED INSURANCE PROGRAM)



- Project documents are available at ARC reprographics for a fee
 - (415)495-9700 or [CSM Colonnades & District Office Deck Waterproofing Project](#) and [CSM & SKY Roof Replacement Project](#)
- Also available at the District project website at
- <http://smccd.edu/facilities/dwbusops.php> and
- <http://smccd.edu/facilities/csm/businessopportunities.php>



BID DOCUMENTS



THANK YOU

FOR YOUR INTEREST

IN OUR

CAPITAL IMPROVEMENT

PROGRAM!

[HTTP://WWW.SMCCD.EDU/ACCOUNTS/SMCCD/DEPARTMENTS/FACILITIES/](http://www.smccd.edu/accounts/smccd/departments/facilities/)



QUESTIONS & ANSWERS