

SECTION 00 91 01

**ADDENDUM NO. 1**

**SUMMARY**

This document includes requirements that clarify or supersede portions of the Request for Proposal. This Addendum is a Contract Document.

General

The following changes, additions and deletions shall be made to the following document(s); all other conditions shall remain the same.

**I. SPECIFICATIONS**

Item	Reference	Description				
1.	Table of Contents	Section 00 0110 Table of Contents: Replace Table of Contents in its entirety. See attachment.				
2.	Section 00 11 19	<p>a.) Section 00 11 19 Instructions To Bidders: REVISE paragraph 12, end of last sentence, to revise the District sharepoint project web site reference link to be:  <a href="http://sharepoint.smccd.edu/sitedirectory/cpd/cpd%20downloads/forms/allitems.aspx?rootfolder=%2fsitedirectory%2fcpd%2fcpd%20downloads%2fca%20c3%20biada%20college%2ftennis%20courts%20repairs%20and%20improvement%20project&amp;folderctid=&amp;view=%7b6fb13571%2da71b%2d415b%2d9358%2d079d559be0b5%7d">HTTP://SHAREPOINT.SMCCD.EDU/SITEDIRECTORY/CPD/CPD%20DOWNLOA  DS/FORMS/ALLITEMS.ASPX?ROOTFOLDER=%2FSITEDIRECTORY%2FCPD%  2FCPD%20DOWNLOADS%2FCA%20C3%20BIADA%20COLLEGE%2FTENNIS%20C  OURTS%20REPAIRS%20AND%20IMPROVEMENT%20PROJECT&amp;FOLDERCTI  D=&amp;VIEW=%7B6FB13571%2DA71B%2D415B%2D9358%2D079D559BE0B5%7D</a></p> <p>b.) Section 00 11 19 Instruction To Bidders: REVISE paragraph 14., D., 15 as follows:</p> <table border="1" data-bbox="597 1367 1502 1528"> <tr> <td data-bbox="597 1367 954 1528"><b>Access Controls and Alarm Monitoring System</b></td> <td data-bbox="954 1367 1502 1528">Group 4 Technologies AMAG, supplied/installed/programmed by <del>NetVersant</del>. Netronix Integration 1450 Koll Circle, Ste 102, San Jose, CA 95112 Tel 408-573-1444, fax 408-573-1441</td> </tr> </table> <p>c.) Section 00 11 19 Instruction To Bidders: REVISE paragraph 14., D., 16 as follows:</p> <table border="1" data-bbox="597 1591 1502 1724"> <tr> <td data-bbox="597 1591 954 1724"><b>Surveillance System Platform</b></td> <td data-bbox="954 1591 1502 1724">ExacqVision, supplied/installed/programmed by <del>NetVersant</del>. Netronix Integration 1450 Koll Circle, Ste 102, San Jose, CA 95112 Tel 408-573-1444, fax 408-573-1441</td> </tr> </table>	<b>Access Controls and Alarm Monitoring System</b>	Group 4 Technologies AMAG, supplied/installed/programmed by <del>NetVersant</del> . Netronix Integration 1450 Koll Circle, Ste 102, San Jose, CA 95112 Tel 408-573-1444, fax 408-573-1441	<b>Surveillance System Platform</b>	ExacqVision, supplied/installed/programmed by <del>NetVersant</del> . Netronix Integration 1450 Koll Circle, Ste 102, San Jose, CA 95112 Tel 408-573-1444, fax 408-573-1441
<b>Access Controls and Alarm Monitoring System</b>	Group 4 Technologies AMAG, supplied/installed/programmed by <del>NetVersant</del> . Netronix Integration 1450 Koll Circle, Ste 102, San Jose, CA 95112 Tel 408-573-1444, fax 408-573-1441					
<b>Surveillance System Platform</b>	ExacqVision, supplied/installed/programmed by <del>NetVersant</del> . Netronix Integration 1450 Koll Circle, Ste 102, San Jose, CA 95112 Tel 408-573-1444, fax 408-573-1441					
2.	Section 00 91 01	Section 00 91 01 Addendum No. 1: this Addendum is a NEW SECTION.				


3.	Document 00 31 19	<p>Document 00 31 19 Reports, Surveys and Existing Conditions: REVISE paragraph 1.4, revise the District sharepoint project web site reference link to be:  <a href="http://sharepoint.smccd.edu/sitedirectory/cpd/cpd%20downloads/forms/allitems.aspx?rootfolder=%2fsitedirectory%2fcpd%2fcpd%20downloads%2fca%20c3%20b1ada%20college%2ftennis%20courts%20repairs%20and%20improvement%20project&amp;folderctid=&amp;view=%7b6fb13571%2da71b%2d415b%2d9358%2d079d559be0b5%7d">HTTP://SHAREPOINT.SMCCD.EDU/SITEDIRECTORY/CPD/CPD%20DOWNLOA  DS/FORMS/ALLITEMS.ASPX?ROOTFOLDER=%2FSITEDIRECTORY%2FCPD%  2FCPD%20DOWNLOADS%2FCA%C3%B1ADA%20COLLEGE%2FTENNIS%20C  OURTS%20REPAIRS%20AND%20IMPROVEMENT%20PROJECT&amp;FOLDERCTI  D=&amp;VIEW=%7B6FB13571%2DA71B%2D415B%2D9358%2D079D559BE0B5%7D</a></p>
----	-------------------	---

**II. DRAWINGS**

Item	Reference	Description
1.	L-3.0	Adjustment of Sanitary Sewer line. Sanitary Sewer line has shifted uphill of the existing utility lines (there is an electrical line approximately four feet behind the curb and a gas line immediately behind the curb). Refer to attached Drawing Attachment DA1.
2.	D2.0	<p>a.) Added new Pump Assembly detail for holding tank. Refer to attached Drawing Attachment DA2.</p> <p>b.) Added new Holding Tank detail. Refer to attached Drawing Attachment DA3.</p>
3.	D3.0	<p>a.) Revised Kiosk detail. Refer to attached Drawing Attachment DA4.</p> <p>b.) Added new Thrust Block detail. Refer to attached Drawing Attachment DA5.</p>
4.	E0.1	Added fixture type B to the fixture schedule. See attached E1 Drawing.
5.	E1.1	Revised electrical site plan. Added sheet note #13 and #14. Revised conduit schedule note #6. See attached E2 Drawing.
6.	E1.2	Revised photometrics floor plan. See attached E7 Drawing.
7.	E2.1	<p>a.) Revised electrical floor plan. See attached E3 Drawing.</p> <p>b.) Revised electrical floor plan. See attached E4 Drawing.</p> <p>c.) Revised sheet note #3. Added sheet note #6, 7, 8. Revised conduit schedule note #4. Added conduit schedule note #7, 8. See attached E5 Drawing.</p>
8.	E3.2	1. Revised Surveillance System Riser Diagram 1/E3.2. See attached E6 Drawing.
9.	L-4.0	1. NOTE #16 CALLOUT FOR TENNIS BALL RACKS IS TO BE DELETED.
10.	Site Furnishings	<p>Specifications Section 12 93 00: Site Furnishings</p> <p>1. Part 2 – 2.01 Tennis Court Number Signage to be Aluminum Court Numbers Black on White 8 x 10. Contact is Welch Tennis (800) 282-4415, welchtennis.com or approved equal.</p>

**III. CLARIFICATIONS**

Item	Reference	Description
1.	A1	<p>Question: Will Enviroplex be installing the modular restroom?</p> <p>Response: The Contractor is responsible to purchase and provide the Enviroplex modular unit for the project. See Enviroplex plans within the bid set. Contractor shall coordinate and manage the order with the vendor to satisfy the project. It is the responsibility of the Contractor to determine construction means and methods, scope</p>

		<p>buy-out, sequencing and coordination of work. Contractor is responsible to provide all site work and a complete installation of the modular unit as shown on the Enviroplex plan sheets.</p> <p>The modular unit shall be provided with District Standard finishes as listed in item #5 below, and these finishes shall supersede the finishes called out on the Enviroplex plans.</p>
2.	L-3.0, L-4.0	<p>Question: How to remove existing fencing material on new court surface?</p> <p>Response: Contractor is to take care when working around existing tennis court surfaces, which were recently resurfaced. Contractor to take specific care in the removal of the existing fence fabric and the painting of the existing fence framework to not damage the court surface. Bottom of the fabric may need to be cut out to prevent court surface damage (see photo below). Contractor is also to saw cut outside edge of tennis court surface asphalt paving at bottom rail of existing fence to allow for clean edge to new concrete walkway. Concrete to be poured flush to court surface elevations as noted on L-3.0.</p> 
3.	General	<p>General Points of Clarification:</p> <ul style="list-style-type: none"> <li>a) Existing electrical receptacles on fencing are to remain and be operational.</li> <li>b) Protect irrigation hose bib in ground adjacent to tennis courts.</li> <li>c) Demolish and remove existing concrete table near bleachers.</li> <li>d) Existing bleachers are to be relocated to Canada Soccer Field on west side of campus; final location to be determined by Campus Facilities Director.</li> <li>e) Existing 20-foot storage container will be removed by District prior to the start of this project.</li> <li>f) Project site is less than one acre of disturbed soil, so no agency SWPPP is</li> </ul>

		<p>required to be filed for this project. Contractor to use best practices to protect storm water from pollution as it exits the job site.</p> <p>g) Existing porta-potties will be removed Friday, August 31<sup>st</sup>. Contractor to provide own temporary facilities.</p> <p>h) Contractor to use best practices to protect new tennis court surfaces. Contractor is responsible for patching of damages they cause to the court surface.</p>
4.		<p>Question: Is there a rock clause in the contract documents?</p> <p>Response: Please review the geotechnical report as difficult rock can be encountered during this project and would not be considered a change order to the contractor.</p>
5.	General Notes for Modular Restroom	<p>District Standard Finishes for the Modular Restroom are as follows:</p> <ul style="list-style-type: none"> <li>• Exterior Doors/frames – FRP faced aluminum doors.</li> <li>• Hardware – Schlage hardware with “E” keyway and Primus IC core</li> <li>• Resilient Flooring – Johnsonite Veneto 25 mm sheet linoleum</li> <li>• Exterior Paint – Kelly Moore Paint #1128 Kel-Seal 100% Acrylic Elastomeric Coating</li> <li>• Interior Paint – Kelly Moore KM #OW-27 Semi-Gloss; Color Bone</li> <li>• Bathroom Accessories – Toilet Tissue &amp; Seat Cover Dispensers / Napkin Disposals – Bobrick B-357 Classic Series; Towel Dispenser / Waste Container – Bobrick 3944; Soap Dispenser – Clear VU Soap Dispenser Model #9347; Mirror – Bobrick B166 1836; Convenience Shelf – Bobrick B683; Hooks Bobrick B670; Napkin / Tampon Dispenser – Bobrick B3500; Diaper Changing Station – Bobrick B2210</li> <li>• Courtesy Phone - The District standard exterior courtesy phone is CEECO model WPP-331-F-M-G.</li> <li>• Toilet Partitions – Bobrick 1090 Sierra Series Color SC04 Forest Green</li> <li>• Plumbing Fixtures – American Standard Brand White porcelain wall-mounted sinks, toilets and urinals; Chicago or American Standard Metering Faucets</li> <li>• Hose bib- (1) each in both men’s &amp; women’s restroom</li> <li>• Electrical Panels – Square D</li> <li>• Roof Tiles – Install a Class A Roof using Composition Roof Tiles to match the adjacent Canada Vista Faculty Housing Building.</li> </ul>

END OF ADDENDUM

## DOCUMENT 00 01 10

**TABLE OF CONTENTS**

## INTRODUCTORY INFORMATION

Document	Title
00 01 01	Title Page
00 01 07	Seals Page
00 01 10	Table of Contents
00 01 15	List of Drawings

## BIDDING REQUIREMENTS

Document	Title
00 11 13	Advertisement for Bids
00 11 19	Instructions to Bidders
00 21 14	Bid Submittal Vicinity Map
00 21 15	Project Site Campus Map
00 31 19	Reports, Surveys and Existing Conditions
00 41 00	Bid Form
00 43 10	Indemnity and Release Agreement
00 43 13	Bond Accompanying Bid
00 43 25	Substitution Request
00 43 33	Schedule of Major Equipment and Materials Suppliers
00 43 36	Subcontractors List
00 43 45	Escrow Agreement for Security Deposit
00 45 00	Bidder Certifications
00 45 14	Key Personnel
00 45 19	Non-Collusion Affidavit

## CONTRACTING REQUIREMENTS

Document	Title
00 50 00	Notice to Proceed
00 51 00	Notice of Award
00 51 01	Notice of Intent to Award for Construction
00 52 00	Agreement
00 61 00	Construction Performance Bond
00 62 00	Construction Labor and Material Payment Bond
00 65 36	Guaranty
00 65 73	Agreement and Release of Any and All Claims

## CONDITIONS OF THE CONTRACT

Section	Title
00 71 00	General Conditions
00 73 00	Supplementary Conditions
00 73 05	Supplementary Conditions – Hazardous Materials
00 73 17	Insurance
00 73 37	Apprenticeship Program
<b>00 91 01</b>	<b>Addendum No. 1</b>

## SPECIFICATIONS

## Division 1 - General Requirements

Section	Title
01 10 00	Summary of Work
01 21 00	Allowance
01 23 00	Alternates
01 26 00	Modification Procedures
01 29 00	Measurement and Payment
01 31 19	Project Meetings
01 31 23	Web-based Project Management System
01 32 16	Progress Schedules and Reports
01 32 19	Submittal Procedures
01 35 00	Special Procedures
01 35 27	Project Labor Agreement
01 41 00	Regulatory Requirements
01 41 01	Regulatory Requirements – Hazardous Materials
01 42 00	References and Definitions
01 45 23	Testing and Inspection
01 51 00	Temporary Facilities and Controls
01 56 00	Site Security and Safety
01 57 23	Storm Water Pollution Prevention Plan (SWPPP)
01 58 00	Project Identification and Signs
01 60 00	Product Requirements
91 71 23	Field Engineering
01 74 00	Cleaning
01 76 01	Existing Underground Facilities
01 77 00	Contract Closeout
01 78 39	Project Record Documents

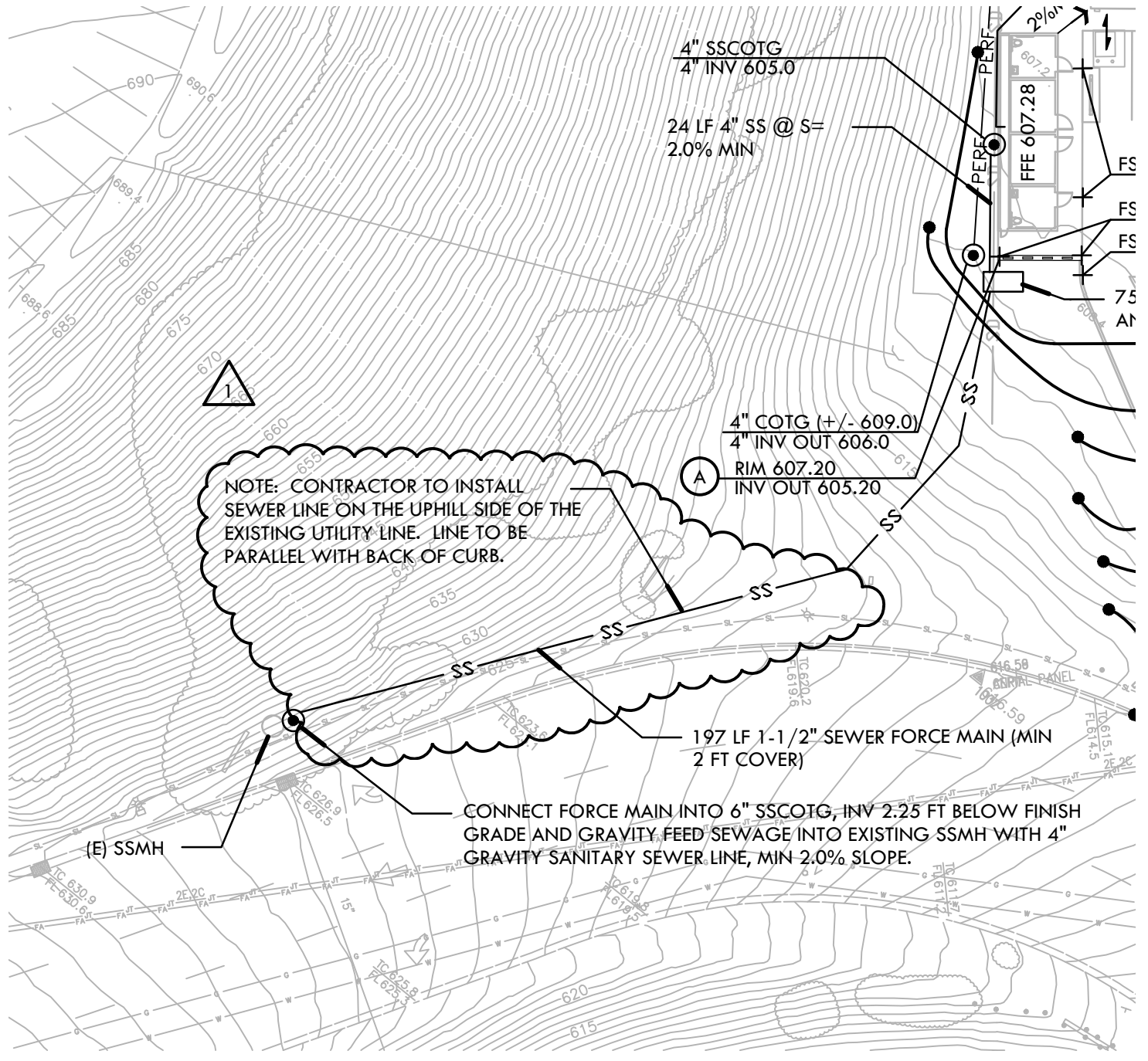
## Division 2 and Above – Technical Requirements

12 93 00	Site Furnishings
23 08 00	Commissioning Requirements
26 05 10	General
26 05 11	Demolition
26 05 19	LV-Cable
26 05 26	Grounding

26 05 33	Conduits
26 05 34	J-Boxes
26 05 43	Underground Ducts
26 05 44	In-Grade Pill Boxes
26 24 16	Panelboards & Distribution
26 27 26	Devices
26 28 16	Breakers
26 50 00	Lighting
27 00 00	Communications
28 23 00	Video Surveillance System
28 31 00	Fire Alarm Systems
31 00 00	Earthwork and Grading
31 10 00	Site Preparation
31 13 00	Tree Protection
31 23 33	Trenching, Backfilling and Compacting
32 10 00	Demolition
32 11 00	Base Courses
32 12 16	Asphalt Concrete Paving
32 13 13	Portland Cement Concrete
32 17 23	Pavement Marking
32 31 13	Chain Link Fencing
33 11 00	Domestic Water Systems
33 40 00	Storm Drainage

END OF DOCUMENT

C:\Users\station31\Desktop\Verde Projects\Canada College Tennis\CAD\\_GRD.dwg



**VERDE DESIGN**  
LANDSCAPE ARCHITECTURE  
CIVIL ENGINEERING  
SPORT PLANNING & DESIGN

2455 The Alameda  
Santa Clara, CA 95050  
tel: 408.985.7200  
fax: 408.985.7260  
www.VerdeDesigninc.com

# CANADA COLLEGE TENNIS FACILITY IMPROVEMENTS ADDENDUM ONE

## GRADING PLAN - SEWER LINE LOCATION

PROJECT# 1207300  
CHECKED BY: DC

DATE: 8.31.12  
SCALE: NTS

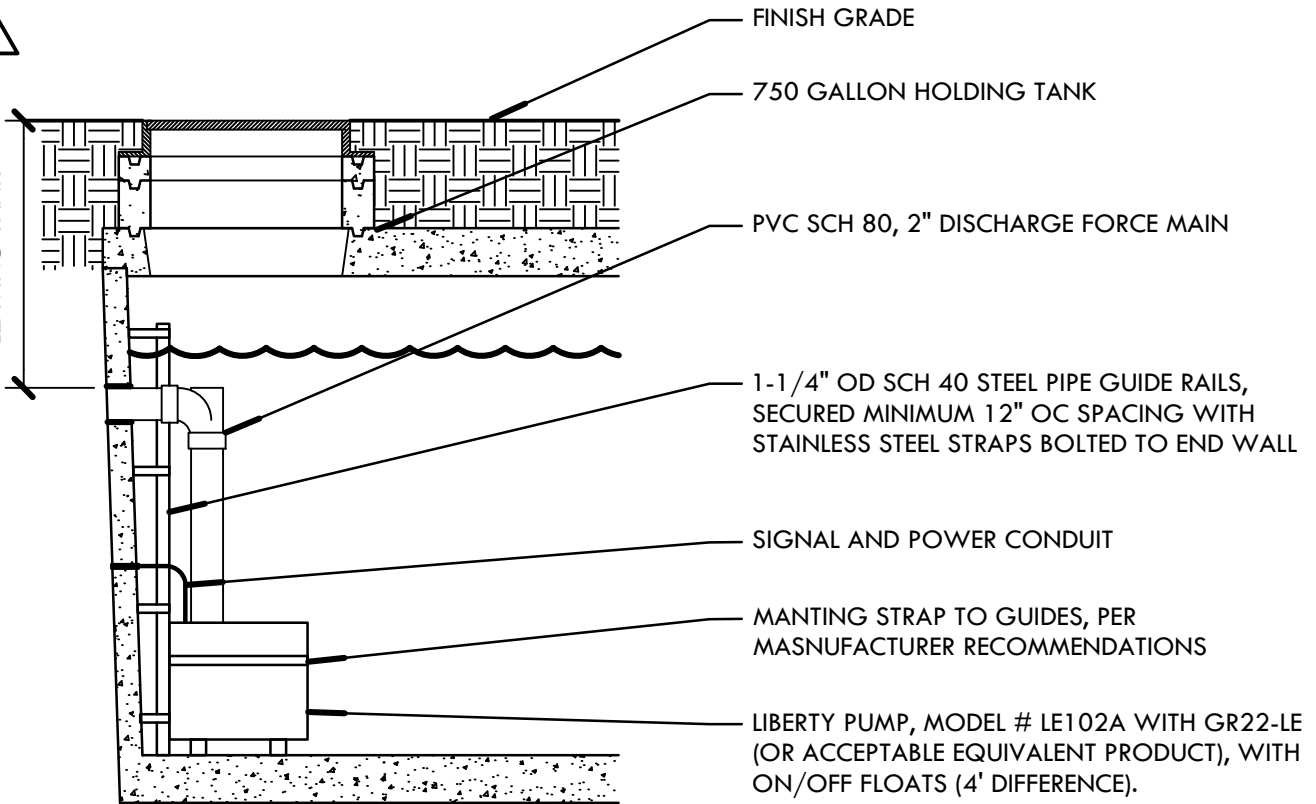
DA1



C:\Users\station31\Desktop\Verde Projects\Canada College Tennis\CAD\Details\Drainage Details\_pump.dwg



MIN. 2' COVER  
LEAVING TANK



FINISH GRADE

750 GALLON HOLDING TANK

PVC SCH 80, 2" DISCHARGE FORCE MAIN

1-1/4" OD SCH 40 STEEL PIPE GUIDE RAILS,  
SECURED MINIMUM 12" OC SPACING WITH  
STAINLESS STEEL STRAPS BOLTED TO END WALL

SIGNAL AND POWER CONDUIT

MANTLING STRAP TO GUIDES, PER  
MANUFACTURER RECOMMENDATIONS

LIBERTY PUMP, MODEL # LE102A WITH GR22-LE  
(OR ACCEPTABLE EQUIVALENT PRODUCT), WITH  
ON/OFF FLOATS (4' DIFFERENCE).

NOTE: CONTRACTOR TO GROUT AND EPOXY WATERTIGHT ALL WALL PENETRATIONS NECESSARY FOR PIPING AND CONDUIT, TYP.



**VERDE DESIGN**

LANDSCAPE ARCHITECTURE  
CIVIL ENGINEERING  
SPORT PLANNING & DESIGN

2455 The Alameda  
Santa Clara, CA 95050  
tel: 408.985.7200  
fax: 408.985.7260  
www.VerdeDesigninc.com

# CANADA COLLEGE TENNIS FACILITY IMPROVEMENTS ADDENDUM ONE

## PUMP ASSEMBLY

PROJECT# 1207300

CHECKED BY: DC

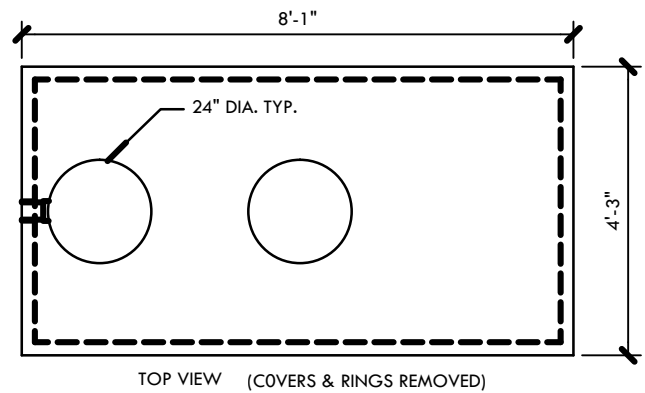
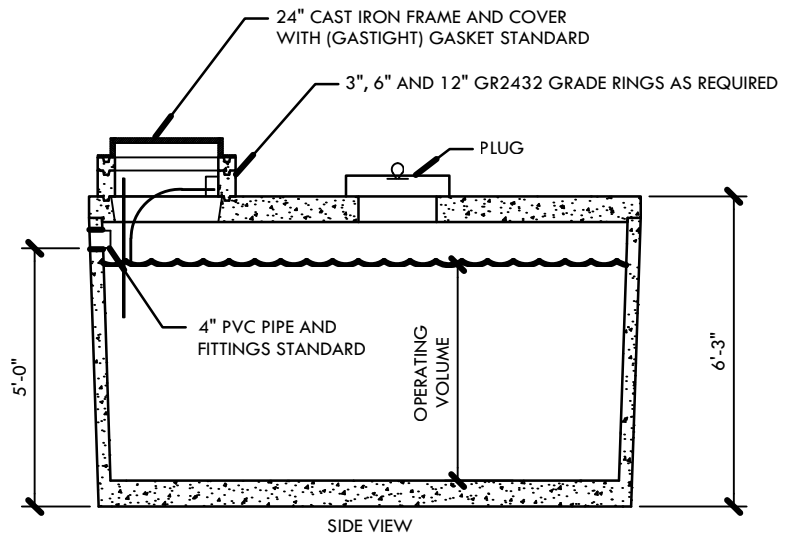
DATE: 8.31.12

SCALE: NTS

**DA2**

C:\Users\station31\Desktop\Verde Projects\Canada College Tennis\CAD\Details\Drainage Details\holding tank.dwg

1



MODEL NUMBER	OPERATING VOLUME GALLONS	TOTAL VOLUME GALLONS	MINIMUM EXCAVATION WIDTH	MINIMUM EXCAVATION LENGTH	* DEPTH OF BURY
HP750-EPP	750	924	5'-3"	9'-1"	1' TO 6'

- TANK DESIGNED FOR H-20 TRAFFIC WHEEL LOAD WITH DRY SOIL CONDITIONS - (WATER TABLE BELOW TANK.)
- EXTERIOR AND INTERIOR CONCRETE SURFACES TO BE COATED WITH AN APPROVED BITUMINOUS MATERIAL.
- SUITABLE NATIVE OR SUB-BASE SHALL BE PREPARED TO HANDLE ANTICIPATED LOADS. THE EXCAVATION SHALL BE BEDDED WITH SUITABLE GRANULAR MATERIAL AND SHALL BE COMPACTED TO 90% MAXIMUM DRY DENSITY, OR TO REQUIREMENTS OF THE PROJECT GEOTECHNICAL ENGINEER.
- FOR COMPLETE PRODUCT INFORMATION CONTACT JENSEN PRECAST, (707) 429-5500.
- CONTRACTOR MAY PROPOSE EQUIVALENT EQUAL OR BETTER PRODUCT FOR SUBSTITUTION AND ACCEPTANCE.



**VERDE DESIGN**  
 LANDSCAPE ARCHITECTURE  
 CIVIL ENGINEERING  
 SPORT PLANNING & DESIGN

2455 The Alameda  
 Santa Clara, CA 95050  
 tel: 408.985.7200  
 fax: 408.985.7260  
 www.VerdeDesigninc.com

**CANADA COLLEGE TENNIS  
 FACILITY IMPROVEMENTS  
 ADDENDUM ONE**

**HOLDING TANK**

PROJECT# 1207300

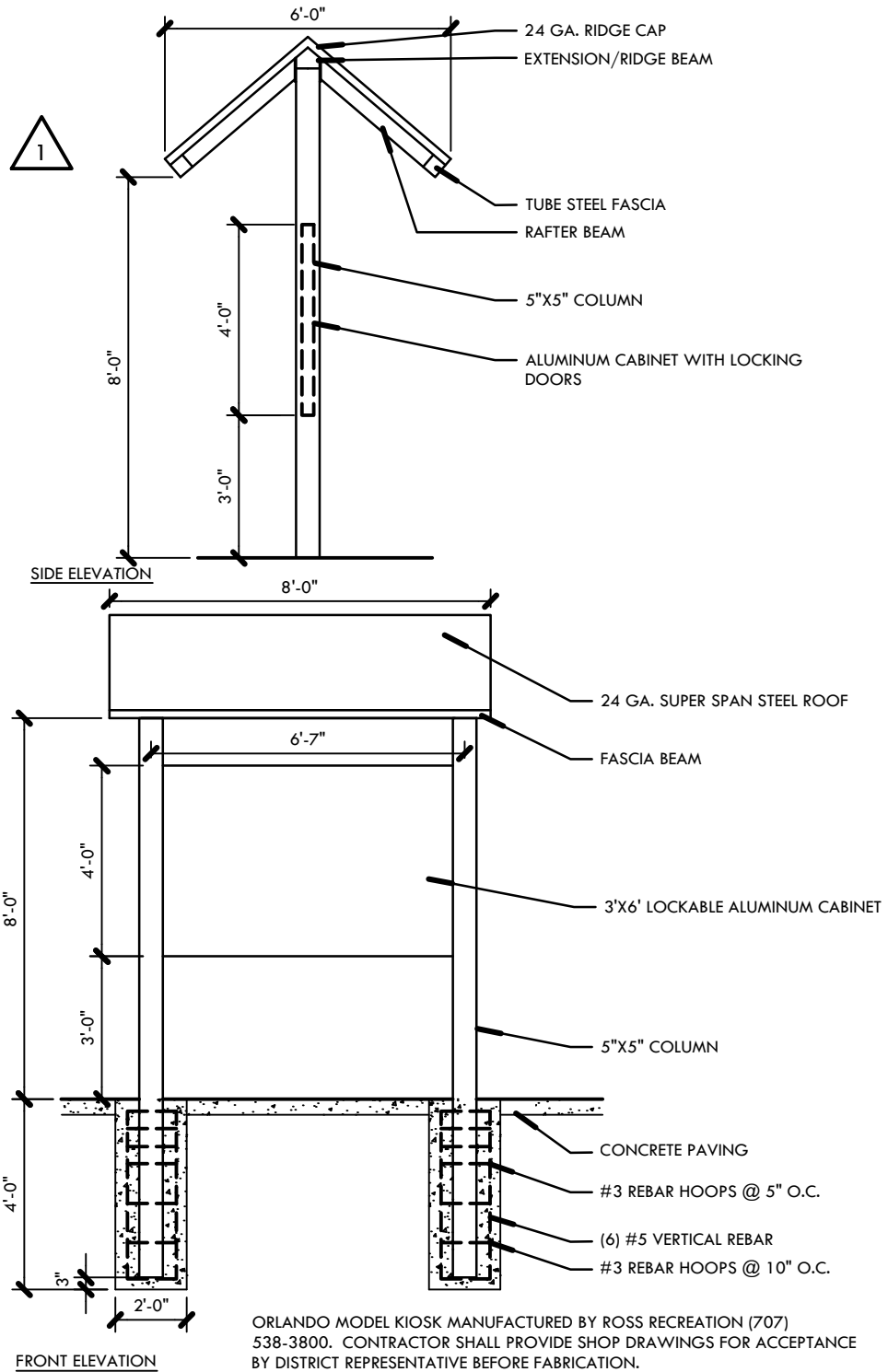
CHECKED BY: DC

DATE: 8.31.12

SCALE: NTS

**DA3**

C:\Users\station31\Desktop\Verde Projects\Canada College Tennis\CAD\Details\Parking\Kiosk.dwg



ORLANDO MODEL KIOSK MANUFACTURED BY ROSS RECREATION (707) 538-3800. CONTRACTOR SHALL PROVIDE SHOP DRAWINGS FOR ACCEPTANCE BY DISTRICT REPRESENTATIVE BEFORE FABRICATION.



**VERDE DESIGN**  
 LANDSCAPE ARCHITECTURE  
 CIVIL ENGINEERING  
 SPORT PLANNING & DESIGN

2455 The Alameda  
 Santa Clara, CA 95050  
 tel: 408.985.7200  
 fax: 408.985.7260  
 www.VerdeDesigninc.com

**CANADA COLLEGE TENNIS  
 FACILITY IMPROVEMENTS  
 ADDENDUM ONE**

**KIOSK SIGN**

PROJECT# 1207300

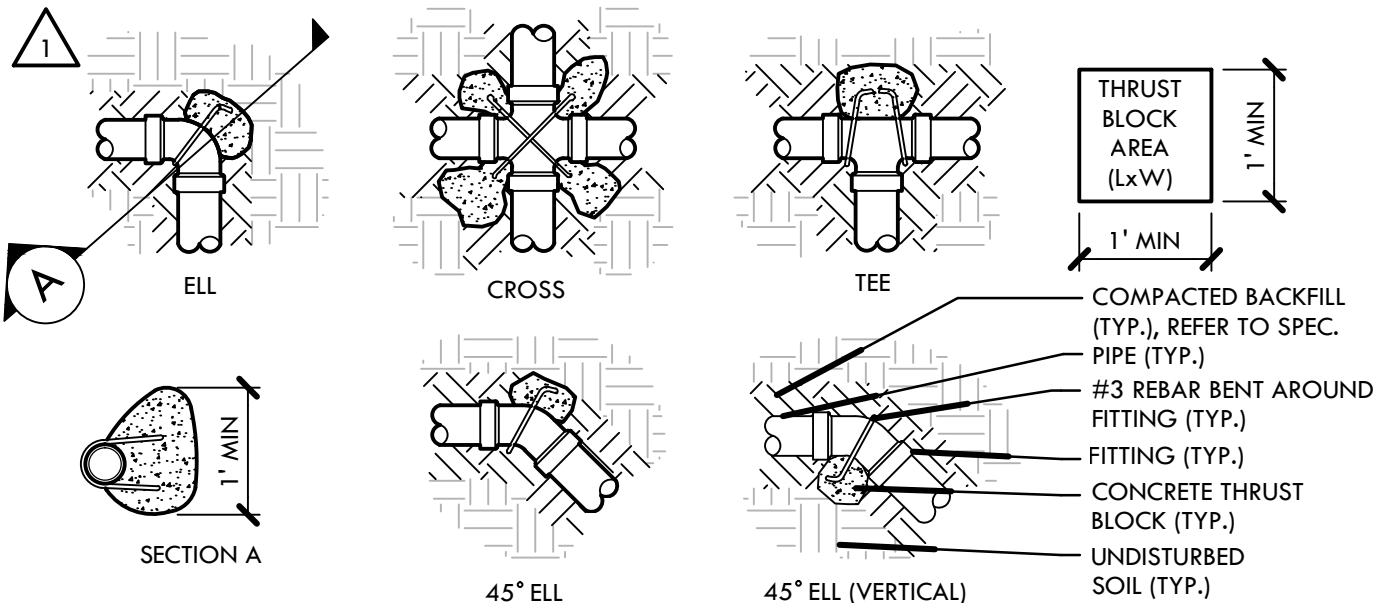
DATE: 8.31.12

CHECKED BY: DC

SCALE: NTS

**DA4**

C:\Users\station31\Desktop\Verde Projects\Canada College Tennis\CAD\Details\Drainage Details\thrust.dwg



**NOTES:**

1. SUPPLY LINES 3" DIA. AND LARGER OR GATE VALVES 2½" OR LARGER SHALL RECEIVE CONCRETE THRUST BLOCKS.
2. MIN. THRUST BLOCK AREAS ARE BASE ON A SOIL BEARING CAPACITY OF 3000 LBS/SF.
3. THRUST BLOCK SHALL EXTEND INTO UNDISTURBED SOIL.
4. CONCRETE SHALL NOT COVER FITTING JOINTS.
5. MAIN LINE PIPING 6" AND LARGER SHALL HAVE DUCTILE IRON FITTINGS WITH JOINT RESTRAINTS INSTALLED AT ALL FLOW DIRECTION CHANGES (CONCRETE THRUST BLOCK NOT REQUIRED)

PIPE SIZE	MINIMUM THRUST BLOCK AREA (LxW)	
	IRRIGATION PIPE	
	TEE, DEAD END, 90° BEND	45°, 22.5°
3"	1 SF	.5 SF
4"	2 SF	1 SF
5"	2 SF	1.5 SF



**VERDE DESIGN**  
 LANDSCAPE ARCHITECTURE  
 CIVIL ENGINEERING  
 SPORT PLANNING & DESIGN

2455 The Alameda  
 Santa Clara, CA 95050  
 tel: 408.985.7200  
 fax: 408.985.7260  
 www.VerdeDesigninc.com

**CANADA COLLEGE TENNIS  
 FACILITY IMPROVEMENTS  
 ADDENDUM ONE**

**THRUST BLOCK**

PROJECT# 1207300

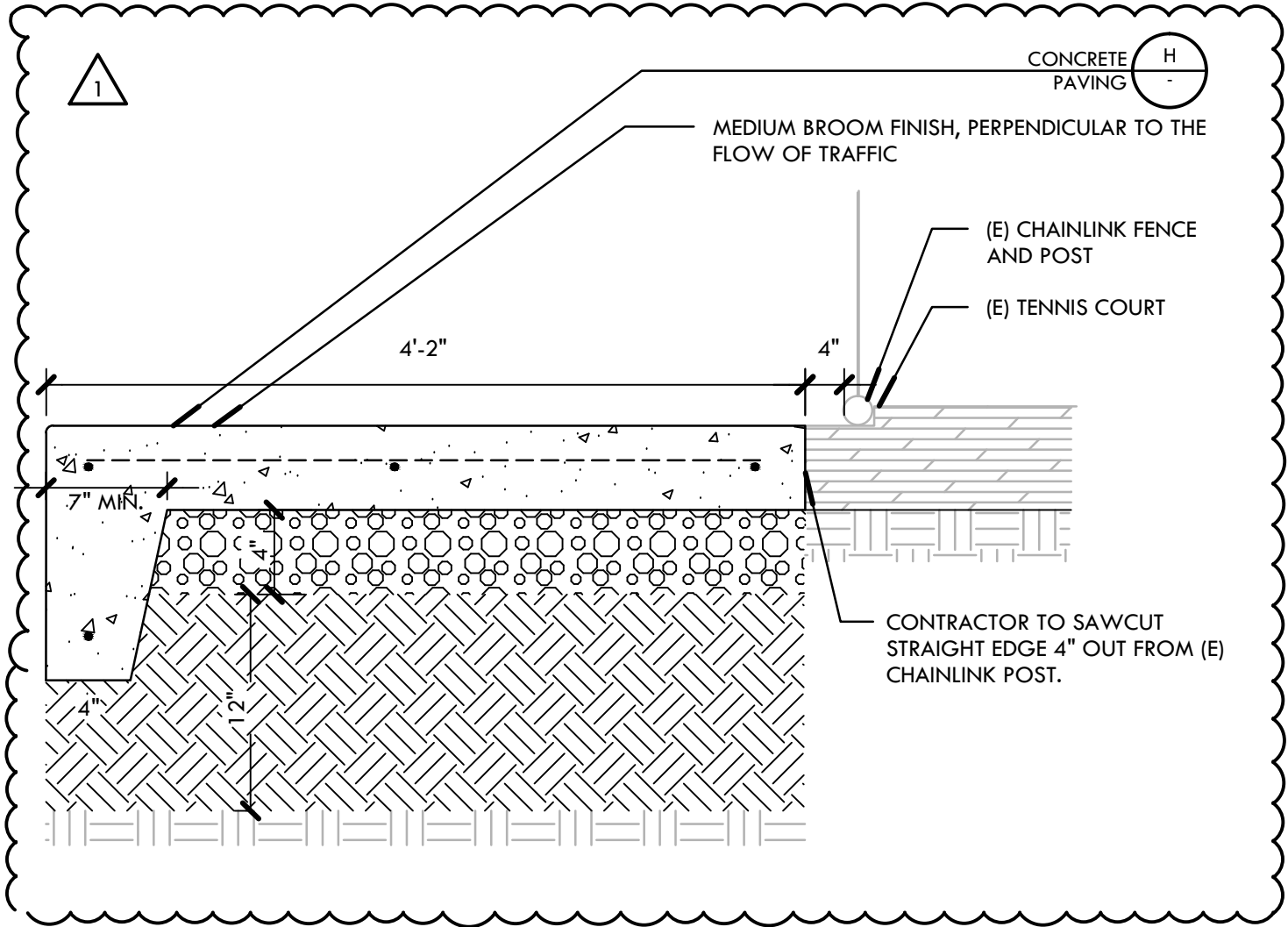
DATE: 8.31.12

CHECKED BY: DC

SCALE: NTS

**DA5**

C:\Users\station31\Desktop\Verde Projects\Canada College Tennis\CAD\Details\Hardscape\concrete section 2.dwg



**VERDE DESIGN**

LANDSCAPE ARCHITECTURE  
CIVIL ENGINEERING  
SPORT PLANNING & DESIGN

2455 The Alameda  
Santa Clara, CA 95050  
tel: 408.985.7200  
fax: 408.985.7260  
www.VerdeDesigninc.com

CANADA COLLEGE TENNIS  
FACILITY IMPROVEMENTS  
ADDENDUM ONE

CONCRETE CONFORM

PROJECT# 1207300

CHECKED BY: DC

DATE: 9.04.12

SCALE: NTS

DA6

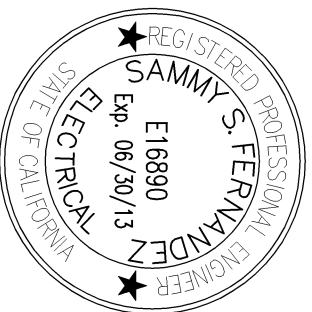
# PARTIAL FIXTURE SCHEDULE

NOMENCLATURE / LAMPS	FIXT. TYPE	DESCRIPTION
<p>WALKWAY LIGHTING</p> <p>HIGH PRESSURE SODIUM 100 WATT</p>	<p style="text-align: center;">B</p>	<p>POLE MOUNTED FLOOD LIGHT. FIXTURE HOUSING SHALL BE SINGLE-PIECE ALUMINUM HOUSING DIE CAST. FIXTURE EPA SHALL BE A MAXIMUM OF 1.3 FT2. FIXTURE FINISH SHALL RECEIVE A FADE AND ABRASION RESISTANT, ELECTROSTATICALLY APPLIED, THERMALLY CURED TEXTURED, POLYESTER POWDERCOAT FINISH.</p> <p>GARDCO - #DF7-5T-VFL-100HPS-2T1-BRP-PTA OR APPROVED EQUAL</p> <p>POLES SHALL BE 12' HIGH, 4" ROUND X .125" THICK STEEL. BASE SHALL BE CAST ALUMINUM #356 ALLOY, BASE CASTING SHALL BE HEAT TREATED TO A T-6 CONDITION AND UNIFORM WALL THICKNESS, WITH NO WARPING OR MOLD SHIFTING. ANCHOR BOLTS SHALL BE PROVIDED WITH THE POLE. EACH ANCHOR BOLT SHALL BE PROVIDED WITH ALL HARDWARE NECESSARY FOR POLE INSTALLATION. BASE COVER SHALL BE TWO PIECE AND CONCEAL THE ENTIRE BASE PLATE AND ANCHORAGE. POLE SHALL BE PROVIDED WITH SECURITY HOLE CUTOUT 12" BELOW TOP OF THE POLE. COORDINATE WITH SECURITY INSTALLER. POLE SHALL BE PROVIDED WITH A HANDHOLE 12" ABOVE THE BASE. HANDHOLE SHALL BE PROVIDED WITH A COVER PLATE AND ATTACHMENT SCREWS. POLES SHALL BE FACTORY DRILLED FOR PROPER FIXTURE INSTALLATION. ALL POLES SHALL BE PROPERLY LEVELED AND VERTICAL. LIGHTING FIXTURE HEADS SHALL BE MOUNTED TO THE POLE PER THE MANUFACTURERS RECOMMENDATIONS.</p>



**American Consulting  
Engineers  
Electrical, Inc.**

1590 The Alameda, Suite 200  
San Jose, CA 95126  
Ph: 408/236-2312  
Fax: 408/236-2316  
JOB #E12249.00



**VERDE DESIGN**  
LANDSCAPE ARCHITECTURE  
CIVIL ENGINEERING  
SPORT PLANNING & DESIGN

2455 The Alameda  
Santa Clara, CA 95050  
tel: 408.985.7200  
fax: 408.985.7260  
www.VerdeDesignInc.com

**CANADA COLLEGE TENNIS  
FACILITY IMPROVEMENTS  
ADDENDUM ONE**

**REFERENCE DRAWING: EO.1**

PROJECT# 1207300

CHECKED BY: SF

DATE: 8.31.12

SCALE: NTS

**E1**

ALL IDEAS, DESIGNS, ARRANGEMENTS, AND PLANS INDICATED OR REPRESENTED BY THIS DRAWING ARE OWNED BY AND THE PROPERTY OF VERDE DESIGN, INC. AND WERE CREATED, EVOLVED, AND DEVELOPED FOR USE ON AND IN CONNECTION WITH THE SPECIFIED PROJECT. NONE OF SUCH IDEAS, DESIGNS, ARRANGEMENTS OR PLANS SHALL BE USED, REPRODUCED, OR PUBLISHED IN WHOLE OR IN PART, OR DISCLOSED TO ANY PERSON, FIRM, OR CORPORATION FOR ANY PURPOSE, WHATSOEVER, WITHOUT WRITTEN PERMISSION OF VERDE DESIGN, INC.

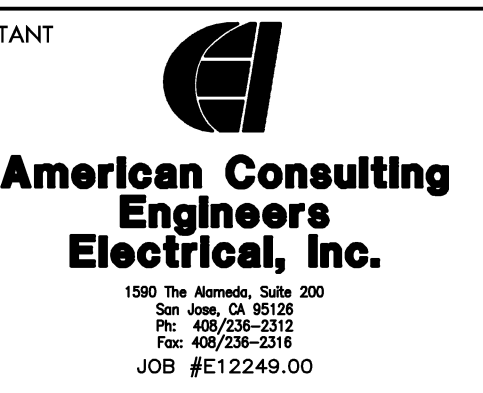
**GENERAL NOTES:**

- CONTRACTOR SHALL COORDINATE UNDERGROUND REQUIREMENTS WITH ALL OTHER TRADES TO AVOID CONFLICT.
- SEE SINGLE LINE DIAGRAM FOR CONDUCTOR REQUIREMENTS.
- CONTRACTOR SHALL BE RESPONSIBLE FOR ANY SAW CUTTING AND REMOVAL OF EXISTING SURFACES TO FACILITATE UNDERGROUND SYSTEMS. THE CONTRACTOR SHALL PATCH AND REPAIR ALL DAMAGED AND CUT SURFACES TO MATCH ADJACENT.
- CONTRACTOR TO SITE SURVEY EXISTING CONDITIONS AND LOCATIONS OF EXISTING UNDERGROUND SYSTEMS, WHERE NEW TRENCHWORK OCCURS PRIOR TO BIDDING. CONTRACTOR SHALL TAKE PROPER PRECAUTIONS TO ENSURE EXISTING UNDERGROUND SYSTEMS/CONDUITS/PIPES ARE NOT DAMAGED DURING INSTALLATION. CONTRACTOR IS RESPONSIBLE FOR ANY REPAIRS REQUIRED IN THE EVENT THE EXISTING UNDERGROUND SYSTEMS ARE DAMAGED AS A RESULT OF THE NEW ELECTRICAL TRENCHWORK.
- ALL PEDESTRIAN LIGHTING POLES SHALL BE NUMBERED TO IDENTIFY POLE. PROVIDE STANDARD ADHESIVE NAMEPLATE PER MANUFACTURERS RECOMMENDATION.
- ALL WALKWAY LIGHTING POLES SHALL BE PROVIDED WITH (1) N4 FULL BOX NEXT TO POLE BASE, W4N.

STAMP



CONSULTANT

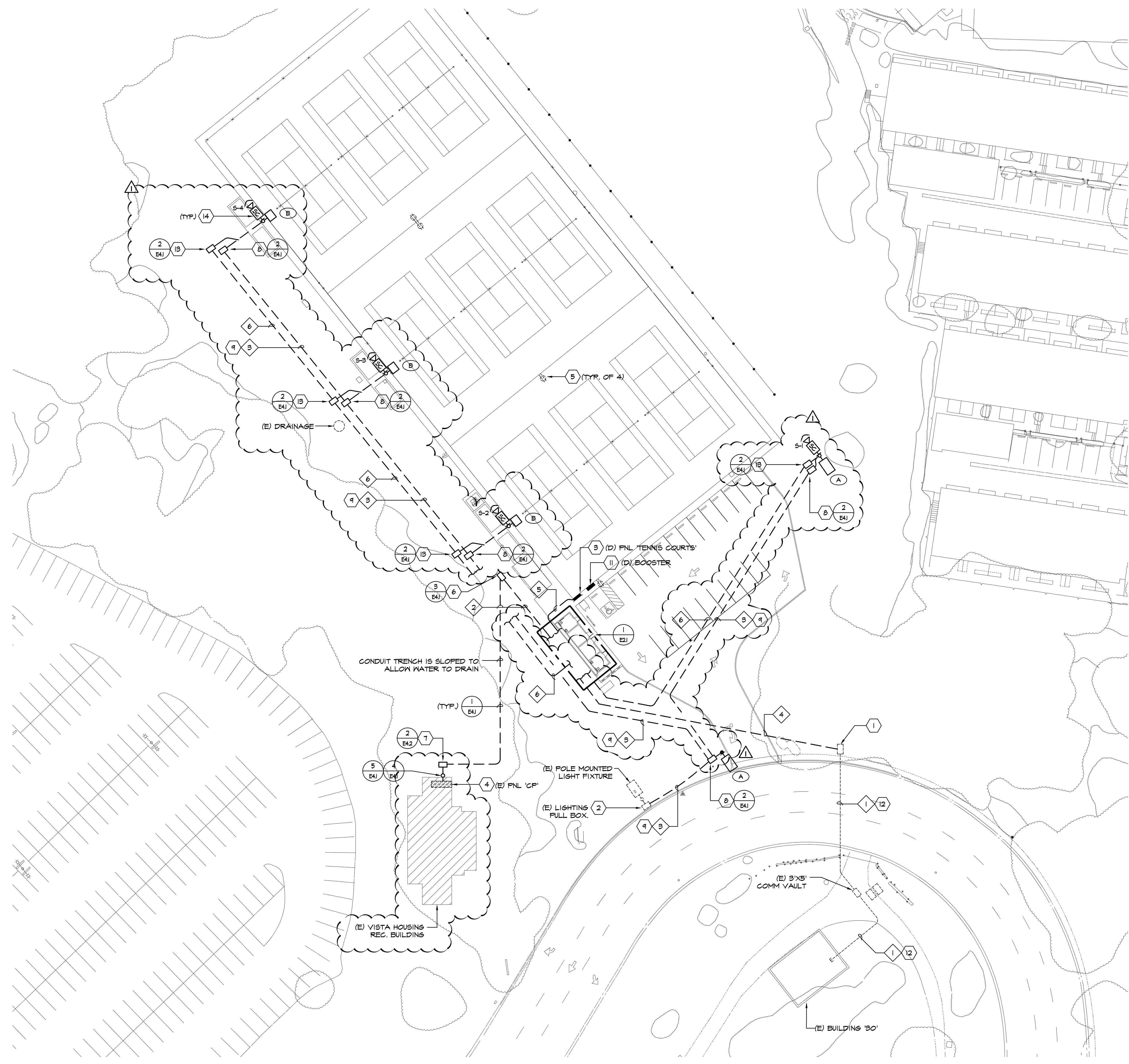


**SHEETS NOTES:**

- EXISTING COMMUNICATIONS FULL BOX. PROVIDE ALL LABOR AS REQUIRED TO STUB CONDUIT INTO THE SIDE OF THE FULL BOX. IF THE FULL BOX IS DAMAGED DURING PENETRATION, CONTRACTION SHALL BE RESPONSIBLE TO PROVIDE NEW.
- EXISTING LIGHTING FULL BOX. PROVIDE ALL LABOR AS REQUIRED TO STUB CONDUIT INTO THE SIDE OF THE FULL BOX. IF THE FULL BOX IS DAMAGED DURING PENETRATION, CONTRACTION SHALL BE RESPONSIBLE TO PROVIDE NEW.
- EXISTING PANEL 'TENNIS' TO BE REMOVED COMPLETELY. CONTRACTOR SHALL MAINTAIN EXISTING BRANCH CIRCUITS. CONTRACTOR SHALL PROVIDE NEW NEMA-3R WALL MOUNTED SPLICE BOX. SEE SINGLE LINE DIAGRAM FOR ADDITIONAL DETAILS.
- EXISTING PANEL 'CP'. SEE SINGLE LINE FOR ADDITIONAL DETAILS.
- EXISTING RECEPTACLES TO REMAIN.
- NEW 'NBO' IN-GRADE ELECTRICAL FULL BOX TO BE PROVIDED AND INSTALLED BY CONTRACTOR. LABEL LID 'ELECTRICAL'.
- NEW EXTERIOR MOUNTED ENCLOSED CIRCUIT BREAKER. SEE SINGLE LINE DIAGRAM FOR ADDITIONAL DETAILS.
- NEW 'N4' IN-GRADE LIGHTING FULL BOX TO BE PROVIDED AND INSTALLED BY CONTRACTOR. LABEL LID 'LIGHTING'.
- INTERCEPT EXISTING LIGHTING CIRCUIT SERVING THE EXTERIOR POLE MOUNTED LIGHTS. EXTEND CIRCUIT IN NEW CONDUIT TO NEW POLE MOUNTED LIGHT FIXTURE.
- NEW 'N4' IN-GRADE COMMUNICATIONS FULL BOX TO BE PROVIDED AND INSTALLED BY CONTRACTOR. LABEL LID 'COMMUNICATIONS'.
- EXISTING BOOSTER TO BE REMOVED COMPLETELY.
- INSTALL (2) 1" INNER DUCT INSIDE EXISTING SPARE 2" CONDUIT. ONE INNER DUCT WILL BE USED FOR FIBER, THE OTHER INNER DUCT WILL BE USED FOR FIRE ALARM.
- NEW 'N4' IN-GRADE SIGNAL FULL BOX TO BE PROVIDED AND INSTALLED BY CONTRACTOR. LABEL LID 'SIGNAL'.
- NEW SECURITY CAMERA. CONTRACTOR SHALL COORDINATE WITH DISTRICT SECURITY FOR PROPER AIMING OF CAMERAS AND ADJUST AS REQUIRED TO OBTAIN SATISFACTION. ONCE SYSTEM IS INSTALLED CONTRACTOR IS RESPONSIBLE TO PROVIDE PROPER TRAINING ON SYSTEM. SEE SECURITY RISER DIAGRAM FOR ADDITIONAL DETAILS.

**CONDUIT SCHEDULE:**

- (E) (3) 2" - COMMUNICATIONS  
(E) (1) 2" - SPARE (UTILIZE FOR THIS PROJECT)
- (N) (1) 3" - POWER FOR (N) PORTABLE  
(N) (1) 2" - SPARE
- (N) (1) 2" - LIGHTING
- (N) (1) 2" - FIBER  
(N) (1) 2" - SPARE
- (N) (1) 1" - RECEPTACLES / TICKET MACHINE
- (N) (1) 2" - SECURITY CAMERA



**1 ELECTRICAL SITE PLAN**

E1.1 SCALE: 1" = 30'-0"

SHEET TITLE

**ELECTRICAL SITE PLAN**

PROJECT NAME

**CANADA COLLEGE TENNIS FACILITY IMPROVEMENTS**

PROJECT ADDRESS

**4200 FARM HILL BLVD  
 REDWOOD CITY, CA 94061**

SUBMITTAL	DATE
90%	07/30/12
BID SUBMITTAL	08/21/12
ADDENDUM ONE	08/31/12

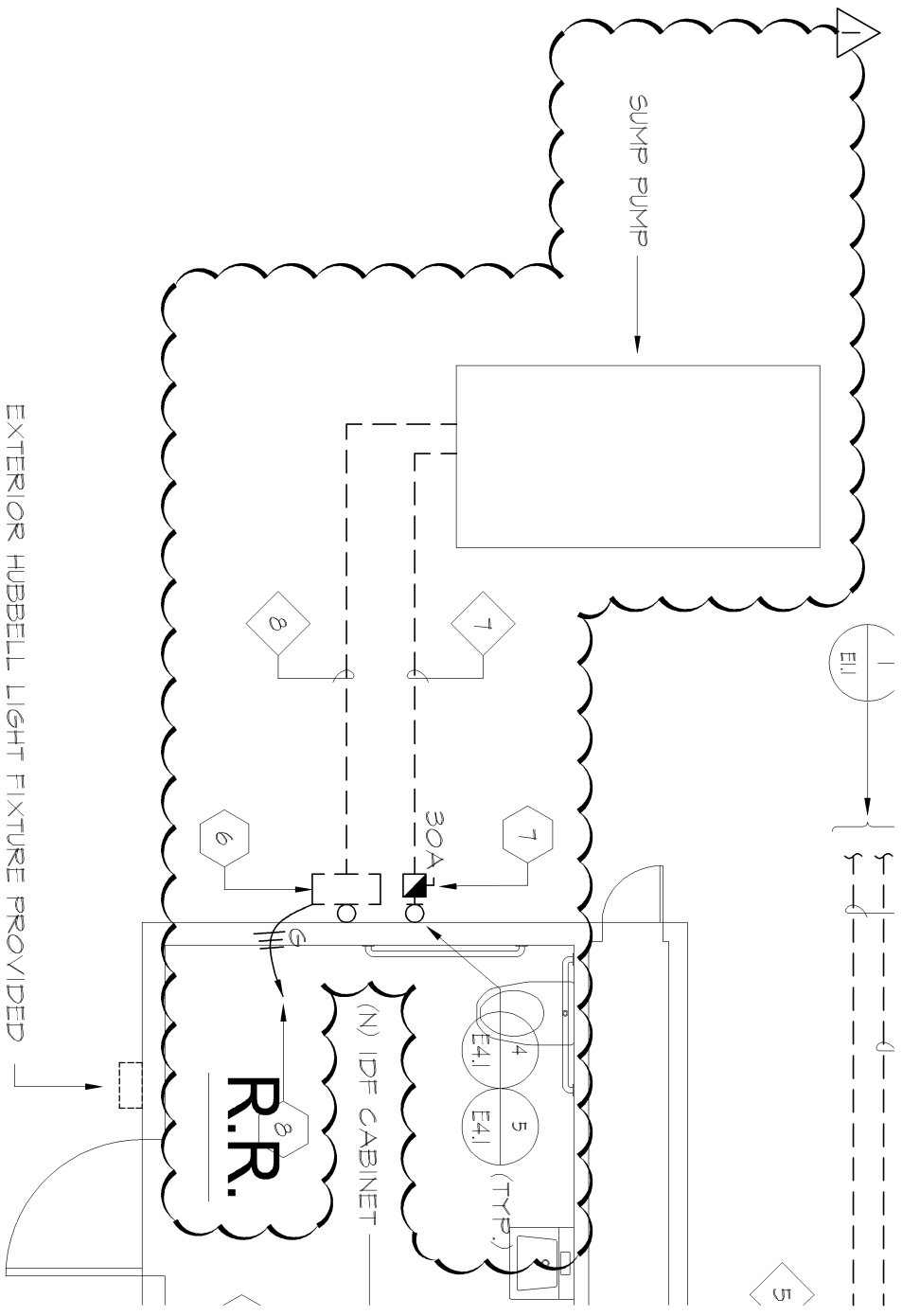
NO.	REVISIONS	DATE

DRAWN BY: MM CHECKED BY: SF

DATE ISSUED: 08/21/12 SCALE: AS NOTED

PROJ. NO.: 1207300-1281

SHEET NO.: **E2** OF SHEETS



1 **PARTIAL ELECTRICAL FLOOR PLAN**

E2.1

SCALE: 1/4" = 1'-0"



**American Consulting  
Engineers  
Electrical, Inc.**

1590 The Alameda, Suite 200  
San Jose, CA 95126  
Ph: 408/236-2312  
Fax: 408/236-2316  
JOB #E112249.00



**VERDE DESIGN**  
LANDSCAPE ARCHITECTURE  
CIVIL ENGINEERING  
SPORT PLANNING & DESIGN

2455 The Alameda  
Santa Clara, CA 95050  
tel: 408.985.7200  
fax: 408.985.7260  
www.VerdeDesignInc.com

**CANADA COLLEGE TENNIS  
FACILITY IMPROVEMENTS  
ADDENDUM ONE**

REFERENCE DRAWING: E2.1

PROJECT# 1207300

CHECKED BY: SF

DATE: 8.31.12

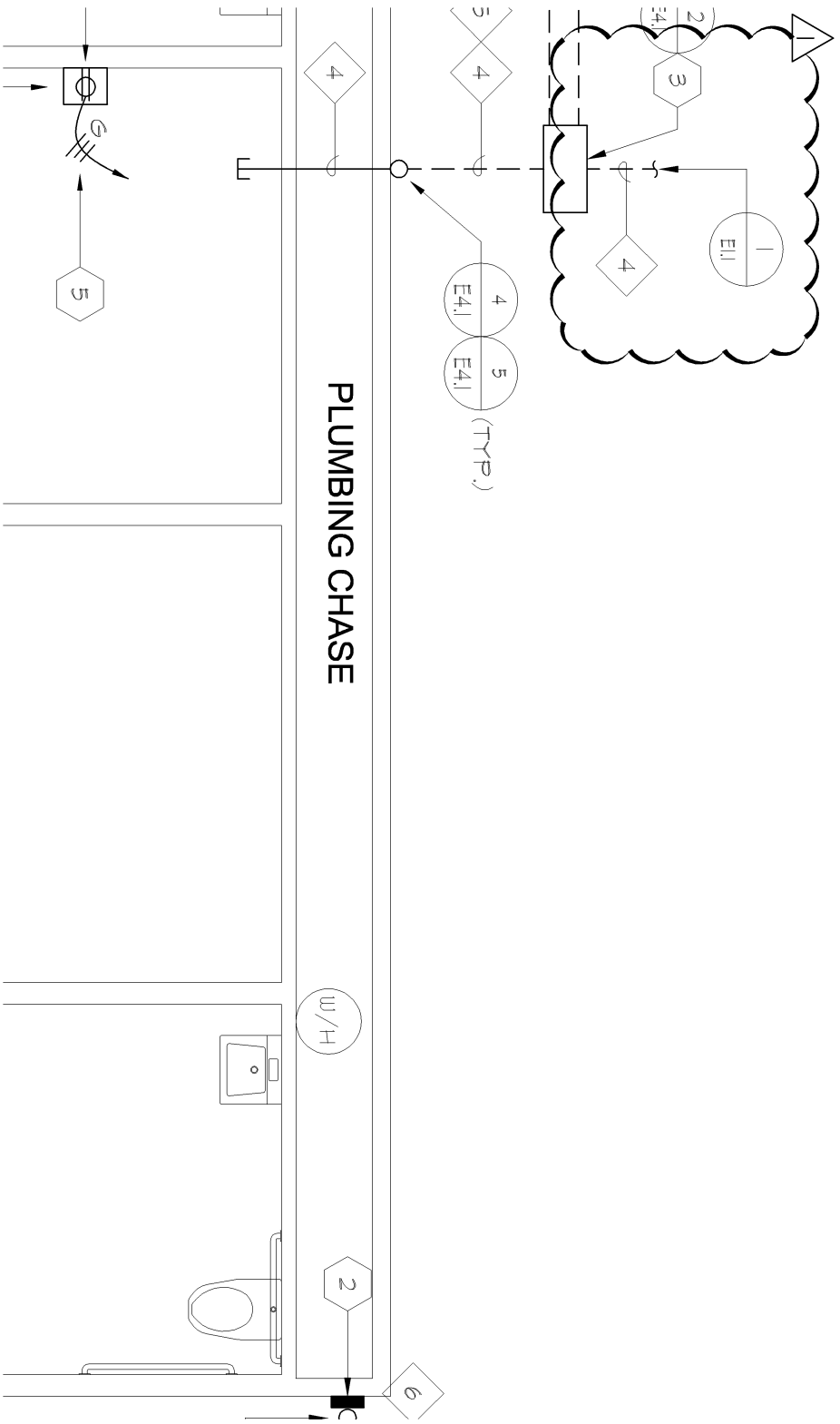
SCALE: NTS



**NORTH**







# PARTIAL ELECTRICAL FLOOR PLAN

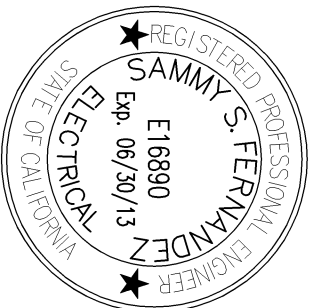
E2.1

SCALE: 1/4" = 1'-0"



**American Consulting  
Engineers  
Electrical, Inc.**

1590 The Alameda, Suite 200  
San Jose, CA 95126  
Pn: 408/236-2312  
Fax: 408/236-2316  
JOB #E112249.00



**VERDE DESIGN**  
LANDSCAPE ARCHITECTURE  
CIVIL ENGINEERING  
SPORT PLANNING & DESIGN

2455 The Alameda  
Santa Clara, CA 95050  
tel: 408.985.7200  
fax: 408.985.7260  
www.VerdeDesignInc.com

**CANADA COLLEGE TENNIS  
FACILITY IMPROVEMENTS  
ADDENDUM ONE**

**REFERENCE DRAWING: E2.1**

PROJECT# 1207300

CHECKED BY: SF

DATE: 8.31.12

SCALE: NTS



**NORTH**

**E4**

# PARTIAL SHEET NOTES:

- 3 NEW "130" IN GRADE COMMUNICATIONS VAULT TO BE PROVIDED AND INSTALLED BY CONTRACTOR. LABEL LID "COMMUNICATIONS".
- 6 PROVIDE NEMA-3R PUMP CONTROL ENCLOSURE.
- 7 PROVIDE AND INSTALL NEW WALL MOUNTED; HEAVY DUTY NEMA-3R; 250VAC; SINGLE PHASE FUSED DISCONNECT SWITCH. CONTRACTOR SHALL PROVIDE AND PULL NEW (2)#10 AND (1)#10CU GND. FROM MODULAR ELECTRICAL PANEL TO NEW PUMP. PROVIDE NEW 20A/2P CIRCUIT BREAKER IN MODULAR ELECTRICAL PANEL. CONTRACTOR SHALL PROVIDE UNDERGROUND CONDUIT FROM NEW DISCONNECT AND SUMP PUMP AS REQUIRED.
- 8 PROVIDE DEDICATED CONNECTION TO MODULAR ELECTRICAL PANEL. PROVIDE 20A/1P CIRCUIT BREAKER IN PANEL AND CONNECT AS REQUIRED. CONTRACTOR SHALL PROVIDE UNDERGROUND CONDUIT FROM NEW PUMP CONTROL AND SUMP PUMP AS REQUIRED.

# PARTIAL CONDUIT SCHEDULE:

- 4 (N) (1) 2" C SECURITY CAMERA
- 7 (N) (1) 1" C - PUMP POWER
- 8 (N) (1) 1" C - PUMP CONTROL



**American Consulting  
Engineers  
Electrical, Inc.**

1590 The Alameda, Suite 200  
San Jose, CA 95126  
Pki: 408/236-2312  
Fax: 408/236-2316  
JOB #E112249.00



**VERDE DESIGN**  
LANDSCAPE ARCHITECTURE  
CIVIL ENGINEERING  
SPORT PLANNING & DESIGN

2455 The Alameda  
Santa Clara, CA 95050  
tel: 408.985.7200  
fax: 408.985.7260  
www.VerdeDesignInc.com

**CANADA COLLEGE TENNIS  
FACILITY IMPROVEMENTS  
ADDENDUM ONE**

**REFERENCE DRAWING: E2.1**

PROJECT# 1207300

DATE: 8.31.12

CHECKED BY: SF

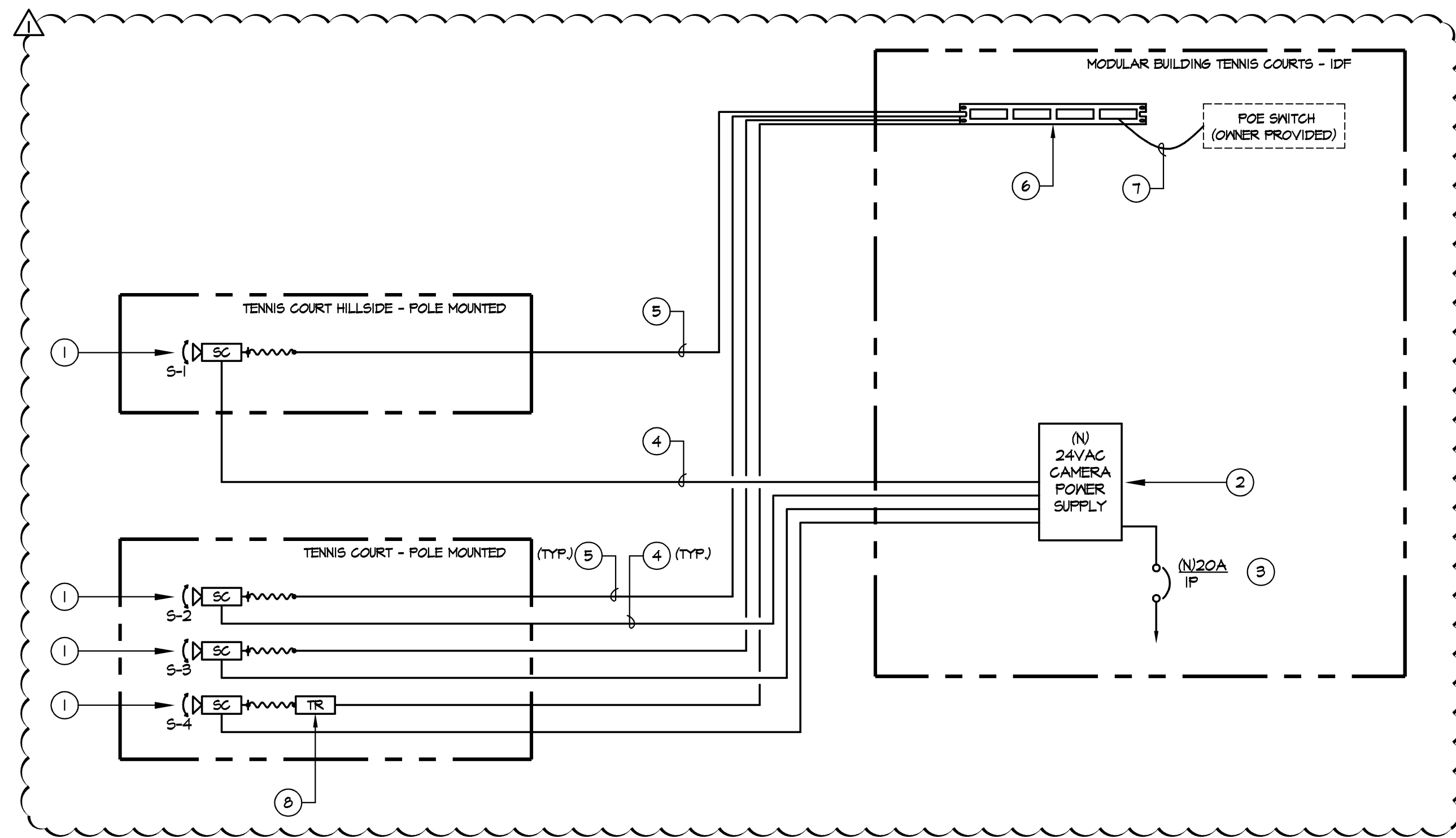
SCALE: NTS



**NORTH**

**E5**

ALL IDEAS, DESIGNS, ARRANGEMENTS, AND PLANS INDICATED OR REPRESENTED BY THIS DRAWING ARE OWNED BY AND THE PROPERTY OF VERDE DESIGN, INC. AND WERE CREATED, EVOLVED, AND DEVELOPED FOR USE ON AND IN CONNECTION WITH THE SPECIFIED PROJECT. NONE OF SUCH IDEAS, DESIGNS, ARRANGEMENTS OR PLANS SHALL BE USED, REPRODUCED, OR PUBLISHED IN WHOLE OR IN PART, OR DISCLOSED TO ANY PERSON, FIRM, OR CORPORATION FOR ANY PURPOSE, WHATSOEVER, WITHOUT WRITTEN PERMISSION OF VERDE DESIGN, INC.

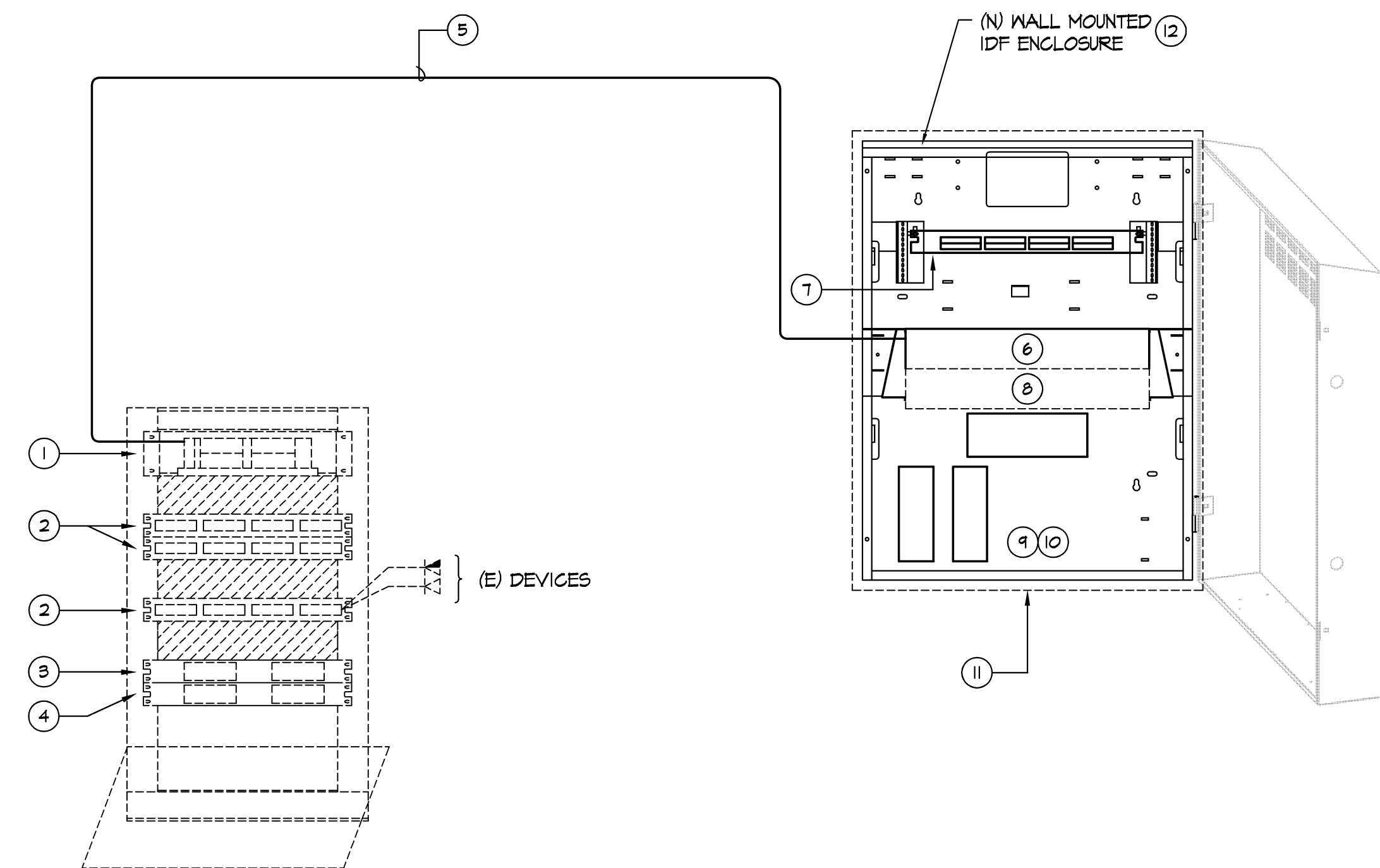


**SURVEILLANCE SYSTEM NOTES:**

- 1 PAN-TILT ZOOM CAMERA AND DOME ARECONT VISION #AV0185DN-HB 180 DEGREE PANORAMIC DAY/NIGHT CAMERA WITH ARECONT VISION #6-0-M PENDANT DOME OUTDOOR HOUSING. PROVIDE WITH REQUIRED POLE MOUNTING ADAPTOR ARECONT VISION #D6-PMA.
- 2 PROVIDE PELCO #WCSI-4 POWER SUPPLY.
- 3 PROVIDE DEDICATED OUTLET TO NEAREST ELECTRICAL PANEL. PROVIDE 20/1P CIRCUIT BREAKER IN PANEL AND CONNECT AS REQUIRED.
- 4 PROVIDE ONE SET OF #6-2 AVMS UNSHEILD CABLE.
- 5 PROVIDE PANDUIT CAT-6 UTP CABLE.
- 6 NEW PATCH PANEL. SEE 2/E3.2 FOR ADDITIONAL INFORMATION.
- 7 NEW PANDUIT #UTPX PATCH CORDS.
- 8 PROVIDE PoE EXTENDER. VERACITY #OUTREACH MAX.

**1 SURVEILLANCE SYSTEM RISER DIAGRAM**

E3.2 SCALE: NOT TO SCALE



(E) "IDF" RACK AT BUILDING 30

(N) IDF AT TENNIS COURT MODULAR  
SEE FLOOR PLAN FOR LOCATION

**RISER NOTES:**

- 1 EXISTING FIBER OPTIC PATCH PANEL TO TERMINATE NEW FIBER OPTIC CABLE.
- 2 EXISTING 24 PORT PATCH PANEL.
- 3 EXISTING CATALYST 3750 SERIES POE-24.
- 4 EXISTING CATALYST 3560 SERIES POE-24.
- 5 INTERMEDIATE DISTRIBUTION FRAME (IDF) TO INTERMEDIATE DISTRIBUTION FRAME (IDF).

- A. INSTALL FIBER OPTIC CABLE IN CONDUIT FROM IDF LOCATION IN BUILDING 30 TO IDF LOCATION IN TENNIS COURT. MAKE TERMINATIONS AT BOTH ENDS OF CABLE WITH 'SC' TYPE CONNECTORS.
1. ROUTE CABLE DIRECTLY FROM IDF TO IDF LOCATION WITHOUT SPLICE OR INTERRUPTION.
  2. CONDUIT SHALL HAVE NO MORE THAN (2) 90 DEGREE BENDS. PROVIDE PULL BOXES WHERE NECESSARY TO LIMIT THE NUMBER OF CONDUIT BENDS AND ASSIST IN PULLING CABLE.
  3. FIBER OPTIC CABLE SHALL BE (12) STRAND SINGLE-MODE FIBER, OUTSIDE PLANT DISTRIBUTION, LOOSE TUBE, GEL FILLED. MANUFACTURER: CORNING CABLE #Q12EM4-T4101D20 'ALTOS' DIELECTRIC OR EQUAL.
  4. MAKE TERMINATIONS AT THE IDF LOCATION ON (N) UNIPRISE (BY COMMSCOPE) RACK MOUNT FIBER OPTIC PATCH PANEL.
    - a. LEAVE 15' OF THE EXCESS FIBER OPTIC CABLE AT THE IDF AND 15' OF EXCESS FIBER OPTIC CABLE AT THE IDF LOCATIONS BEFORE MAKING TERMINATIONS, FOR USE AS A SERVICE LOOP. SECURE EXCESS CABLE IN A NEAT WORKMANLIKE MANNER. ALL TERMINATED FIBER OPTIC CABLES WILL BE INSTALLED INTO UNIPRISE (BY COMMSCOPE) SFA-SC08-AQ ADAPTOR, 24 POSITION, SC RACK MOUNTED FIBER CABINETS.
  5. ALL FIBER OPTIC STRANDS ARE TO BE TESTED BI-DIRECTIONALLY AT BOTH 850nm AND 1300nm WAVELENGTH. TESTS ARE TO BE PERFORMED USING AN OPTICAL POWER METER AND LIGHT SOURCE OR AN OTDR TO MEASURE ATTENUATION FROM COUPLER-TO-COUPLER AT THE DISTRIBUTION PANELS. NO STRAND IS TO EXHIBIT MORE THAN 3.75 dB/km AT 850nm AND 1.5 dB/km AT 1300nm.
  6. ALL FIBER OPTIC CABLE RUNS WILL BE TESTED AND DOCUMENTATION PROVIDED TO SHOW THAT EACH STRAND MEETS OR EXCEEDS THE EIA/TIA-455 STANDARDS. PROVIDE RECORDED TEST RESULTS ON ALL CABLES PASSED FOR OWNER'S RECORDS.
  7. CONTRACTOR WILL TEST THE FIBER OPTIC CABLE PRIOR TO INSTALLATION TO CHECK FOR DEFECTS. IF THE CONTRACTOR DOES NOT TEST THE FIBER, AND DEFECTS ARE FOUND THAT REQUIRE THE CABLE TO BE REPLACED, THE CONTRACTOR IS RESPONSIBLE FOR THE CABLE.
  8. CONTRACTOR WILL TEST THE INSTALLED FIBER OPTIC CABLES AND DOCUMENT EACH STRAND'S RESULT. IF ANY STRANDS ARE FOUND TO BE OUT SPECIFICATION, THE CONTRACTOR WILL REPAIR THE STRANDS TERMINATION AS NEEDED OR REPLACE CABLE IF REQUIRED. THE CONTRACTOR WILL RETEST AFTER REPAIRS.

**RISER NOTES CONTINUED:**

- 6 FIBER OPTIC PATCH PANEL UNIPRISE (BY COMMSCOPE) #RFE-FXS-EMT/U.
- 7 PATCH PANEL PANDUIT #CPL2BMBEL; 24-PORT DISCRETE PATCH PANEL.
- 8 DATA SWITCH TO BE PROVIDED BY OWNER.
- 9 PROVIDE GROUNDING CONNECTION TO BUILDING STEEL AND/OR NEAREST COLD WATER PIPE. MINIMUM GROUNDING CONDUCTOR SHALL BE #4 CU GND.
- 10 SEE SPECIFICATIONS FOR ADDITIONAL REQUIREMENTS FOR (N) CAT 6 WALL RACK PATCH PORTS.
- 11 3/8" PLYWOOD TO MOUNT NEW IDF ENCLOSURE. INSTALL PER MANUFACTURES RECOMMENDATIONS.
- 12 TYPICAL IDF RACK. IDF RACK IN BLDG SHALL BE WALL MOUNTED CABINET RACK HUBBEL #RE4XB.

**2 COMMUNICATIONS RISER DIAGRAM**

E3.2 SCALE: NOT TO SCALE

STAMP

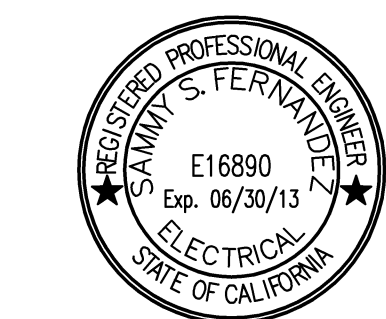


CONSULTANT



**American Consulting Engineers Electrical, Inc.**

1590 The Alameda, Suite 200  
 San Jose, CA 95128  
 Tel: 408/236-2312  
 Fax: 408/236-2318  
 JOB #E12249.00



SHEET TITLE

**SURVEILLANCE RISER DIAGRAM**

PROJECT NAME

**CANADA COLLEGE TENNIS FACILITY IMPROVEMENTS**

PROJECT ADDRESS

**4200 FARM HILL BLVD  
 REDWOOD CITY, CA 94061**

SUBMITTAL	DATE
90%	07/30/12
BID SUBMITTAL	08/21/12
ADDENDUM ONE	08/31/12

NO.	REVISIONS	DATE

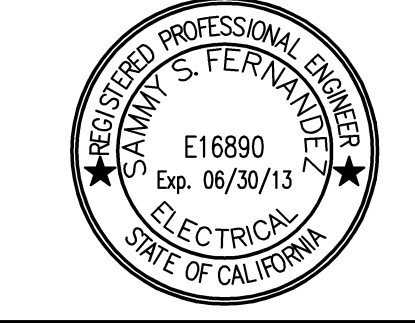
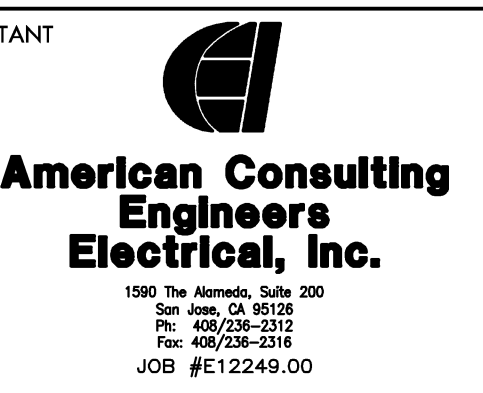
DRAWN BY MM	CHECKED BY SF
DATE ISSUED 08/21/12	SCALE AS NOTED
PROJ. NO. 1207300-1281	
SHEET NO. <b>E6</b> OF SHEETS	

ALL IDEAS, DESIGNS, ARRANGEMENTS, AND PLANS INDICATED OR REPRESENTED BY THIS DRAWING ARE OWNED BY AND THE PROPERTY OF VERDE DESIGN, INC. AND WERE CREATED, EVOLVED, AND DEVELOPED FOR USE ON AND IN CONNECTION WITH THE SPECIFIED PROJECT. NONE OF SUCH IDEAS, DESIGNS, ARRANGEMENTS OR PLANS SHALL BE USED, REPRODUCED, OR PUBLISHED BY ANY METHOD, IN WHOLE OR IN PART, OR DISCLOSED TO ANY PERSON, FIRM, OR CORPORATION FOR ANY PURPOSE, WHATSOEVER, WITHOUT WRITTEN PERMISSION OF VERDE DESIGN, INC.

STAMP



CONSULTANT



SHEET TITLE

**PHOTOMETRICS**

PROJECT NAME

**CANADA COLLEGE  
 TENNIS FACILITY  
 IMPROVEMENTS**

PROJECT ADDRESS

**4200 FARM HILL BLVD  
 REDWOOD CITY, CA 94061**

SUBMITTAL	DATE
90%	07/30/12
BID SUBMITTAL	08/21/12
ADDENDUM ONE	08/31/12

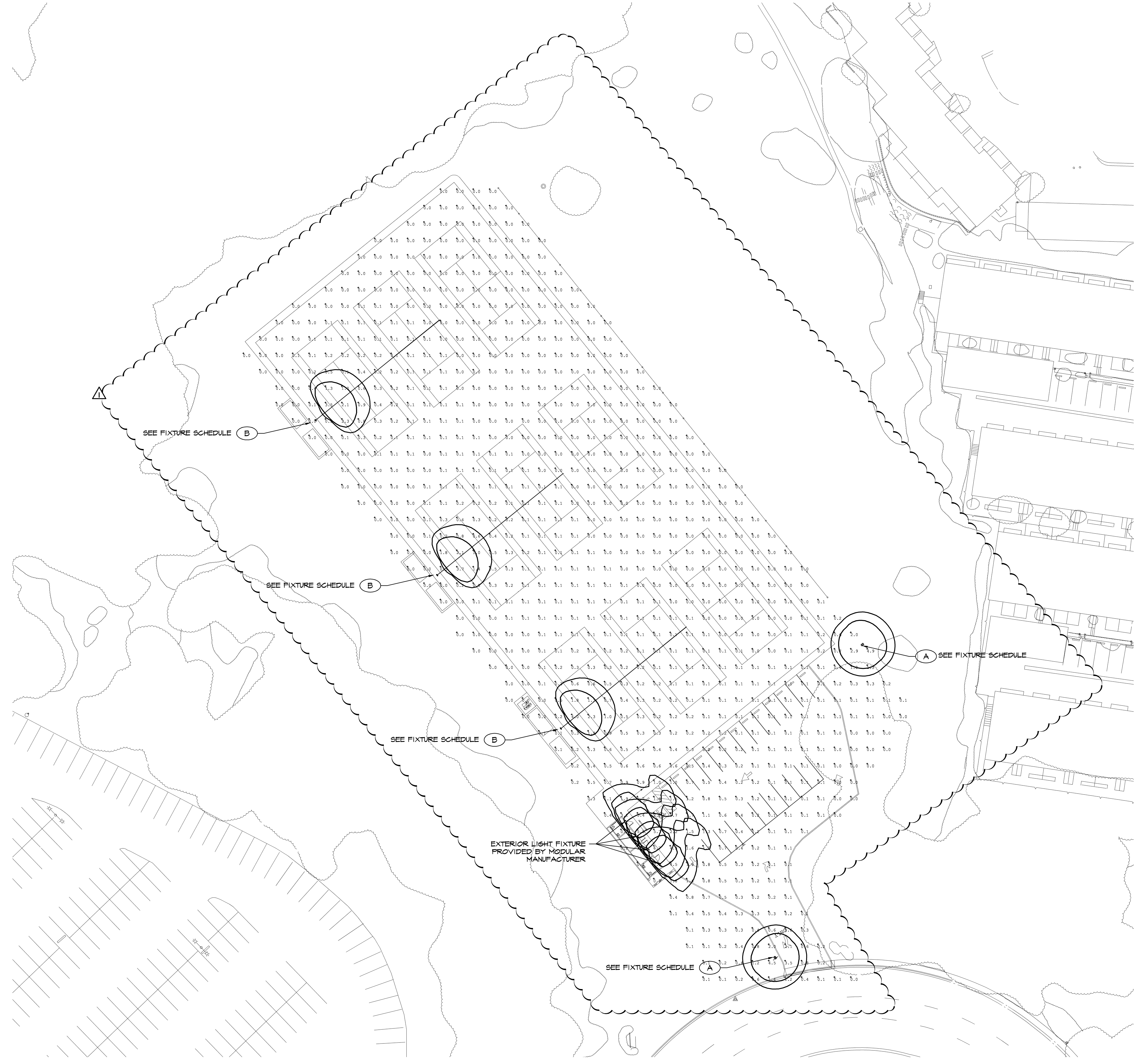
NO.	REVISIONS	DATE
△		
△		
△		
△		
△		

DRAWN BY **MM** CHECKED BY **SF**

DATE ISSUED **08/21/12** SCALE **AS NOTED**

PROJ. NO. **1207300-1281**

SHEET NO. **E7** OF SHEETS



**1 PHOTOMETRICS**  
 E1.2 SCALE: 1" = 30'-0"

