



SAN MATEO COUNTY
COMMUNITY COLLEGE DISTRICT

FACILITIES PLANNING,
MAINTENANCE & OPERATIONS

“Facilities Excellence”

College of San Mateo North Gateway Part II Project: Mandatory Pre-Bid Conference

College of San Mateo



Conferences April 24 & May 1, 2012

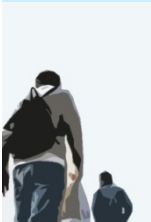




- Welcome and Introductions
- District Website Navigation
- Pre-Bid Conference Administration
- Project Schedule
- Owner Controlled Insurance Program - OCIP
- Project Labor Stabilization Agreement
- Project Overview
- Occupied Campus Coordination Requirements
- Contract & Reference Documents
- Question & Answer – Welcome to Walk Site



Agenda





- **José Nuñez**, Vice Chancellor of Facilities
- **Jan Roecks**, Director of General Services
- **Karen Powell**, Facilities Operations Manager, College of San Mateo
- **Moe Garza**, Facilities Operations Chief Engineer, College of San Mateo
- **Peter Hempel**, Construction Project Manager, Swinerton Management and Consulting
- **Sajid Sulaiman**, Construction Project Manager, Swinerton Management & Consulting



Owner Team



- **Merideth Marschak**, Project Architect, Noll & Tam Architects and Planners
- **Jim Cody**, Construction Administration, Noll & Tam Architects and Planners
- **Roland Haga**, Civil Engineer, BKF
- **Karen Folsom**, Landscape Architect, LPA
- **Sharon Iburg and Rick McHale**, Keenan & Associates (OCIP)
- **Aaron Dodge**, CIS Inc. (Inspector of Record)



Consultant Team

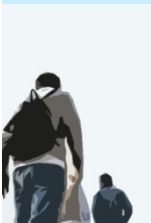


Aerial View – CSM – North Campus area





- District Website (District / College general):
www.smccd.edu
- Business Opportunities (Construction related):
<http://www.smccd.edu/accounts/smccd/departments/facilities/CSMBusOps.shtml>
- Project Website (Project related):
http://www.smccd.edu/accounts/smccd/departments/facilities/CSM_NorthGateway_02.shtml





- Mandatory Conference (attendance at *one conference* is required for prime bidders):
 - Tuesday April 24, 2012 – 2:00 pm
 - Tuesday May 1, 2012 – 10:00 am
- Please Sign In before leaving today
 - Attendance List will be posted to the web, as well as the Presentation slides.
- Pre-Bid Conference Attendance Receipt





- **Qualified Bidders**

- **Prime** bidder must be an A Licensed contractor listed on SMCCCD 2012 Pre-Qualified Contractors List
<http://www.smccd.edu/accounts/smccd/departments/facilities/PrequalCC.shtml>
- **All Prime Bidders** must include a completed “**CSM North Gateway Part II Supplementary Qualification: Statement of Bidder’s Qualifications**” with the bid, in a separately sealed envelope. District will review the Statement of Bidder’s Qualifications of the low apparent responsive bidder.



Qualification Requirements



<http://www.smccd.edu/accounts/smccd/departments/facilities/CSMBusOps.shtml>

- **Legal Notices:** April 18 & 25, 2012
- **Bid Period:** April 18 – May 22, 2012
- **Last RFI Accepted:** 5 pm Friday May 11, 2012
- **Final Addenda possible:** 5 pm Thursday May 17, 2012
- **Bid Submittal:** **Tuesday May 22, 2012**
 - Bids will accepted until, and *no later*, than 2:00 pm
 - Bids will be accepted at CSM Building 12, Room #177



Bid Schedule





Bid delivery map

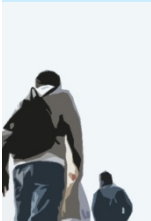




- **Bid Receipt Log web posted** May 22, 2012
- **Notice of Intent to Award posted:** ~May 25, 2012
- **Bid Protest Period:** May 25 – May 30, 2012
- **SMCCCD Board of Trustees Approval of Contract Award**
June 6, 2012
- **Public Works Board Approval of Contract Award**
~June 21, 2012
- **Notice of Award Issued** ~June 22, 2012
- **Notice to Proceed Issued** ~July 10, 2012



Bid & Award Schedule





- **Substantial Completion:** **345 Calendar Days**
Assuming July 2012 NTP, substantial = early July 2013
- **Final Completion:** **390 Calendar Days**
Assuming July 2012 NTP, final = August 2013
- **Fall Semester Starts:** August 14, 2013



Construction Schedule





Owner Controlled Insurance Program - OCIP

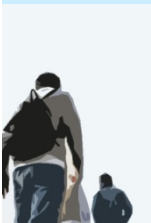
Sharon Iburg and Rick McHale, Keenan & Associates:

- Definition of OCIP
- Bidding requirements: Insurance qualification form and evidence of IIPP
- Contractor safety and how to qualify for OCIP
 - Serious and Willful violations
 - IIPP
 - EMR
- Off-site insurance and auto liability coverage
- Base bid **SHALL NOT** include costs for insurance coverage provided under OCIP



OCIP

(Owner Controlled Insurance Program)





Keenan & Associates:

- **Bid Day Considerations:**

- A MINIMUM of 75% of listed subcontractors **MUST** have a **3 year average EMR** of 1.25 or less and meet criteria for maximum serious / willful violations
- Keenan can provide 3 year average EMR data and violation history for your potential sub-contractors in advance of bid day
- **ONLY Prime** bidder OCIP enrollment form required as part of bid submittal



OCIP

(Owner Controlled Insurance Program)



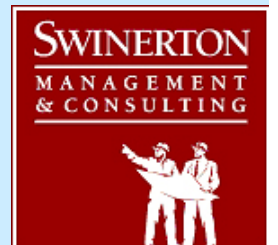


Project Labor Stabilization Agreement

Contract Section 01 35 27 – Project Labor Agreement

- Awarded Contractor and all their Subcontractors must adhere to the PLA
- Signed PLA Letter Of Assent required with Contract
- Copies of the Agreement are available at the District website

http://www.smccd.edu/accounts/smccd/departments/facilities/PLASMCCCD_01.pdf



PLA



Merideth Marschak, Noll & Tam Architects and Planners

Project Overview

- Introduction
- State Agencies Having Jurisdiction (AHJ's)
 - Division of State Architect (DSA)
 - California Community College Chancellor's Office (CCCCO)
- Project Phasing
- Certification at completion of Phase I work



Scope of Work





Merideth Marschak, Noll & Tam Architects and Planners

Project Overview

- Bid documents / Addenda – Conformed Docs
- Site Preparation
- Building Demolition
- Plaza & Parking Lot construction / reconstruction
- Storm Trap & Mechanical Filtration
- Materials Recycling
- SWPPP Requirements



Scope of Work





SAN MATEO COUNTY
COMMUNITY COLLEGE DISTRICT

FACILITIES PLANNING,
MAINTENANCE & OPERATIONS

“Facilities Excellence”

Project Overview



LPA

Architecture
Planning
Interior Design
Landscape Architecture
Signage

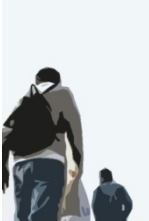
1340 Conroy Road
Suite 100
Menlo Park, California, 94025
P 650 | 772-4500
F 650 | 772-4522
E info@lpa.com
www.lpa.com

Developed for: San Mateo County Community College District
San Mateo, California
1" = 30'-0"

Developed for: San Mateo County Community College District
San Mateo, California

SITE ILLUSTRATIVE PLAN

CSM NORTH GATEWAY
1" = 30'-0"





Building Abatement Is All Completed

- Building 21
- Building 22
- Building 23
- Building 24
- Building 25
- Building 26
- Building 27
- Building 28
- Building 29

All Abatement is completed

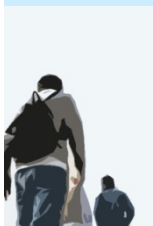
All Buildings are available to GC upon NTP



Building Abatement Completed By Others



- *College of San Mateo is an Occupied Campus located with close adjacent neighbors*
 - *Avoid noise, light and dust across the canyon*
- *College Educational Mission is Paramount*
- *Construction logistics must accommodate the College's schedule, events and priorities*



Occupied Campus Logistics



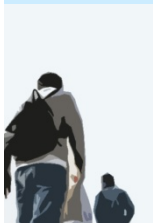
- Communication with Construction Manager
- Weekly Owner/Architect/Contractor Meeting
- Site Utilization Plan – Weekly Updates
- Protect existing utilities
 - Study As-Builts
 - Field Review with Chief Engineer
 - Pothole Carefully



Occupied Campus Logistics



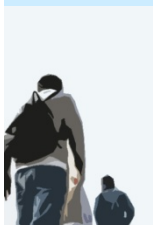
- Advance Notice Required – Utility Shutdowns/Access Interruptions
- Site Fence – Must include green windscreen
- Signage – Traffic Control/Pedestrian Re-direct
- Contractor Parking – Within site, TBD by Contractor
- Staging and Laydown Areas --- TBD by Contractor



Occupied Campus Logistics

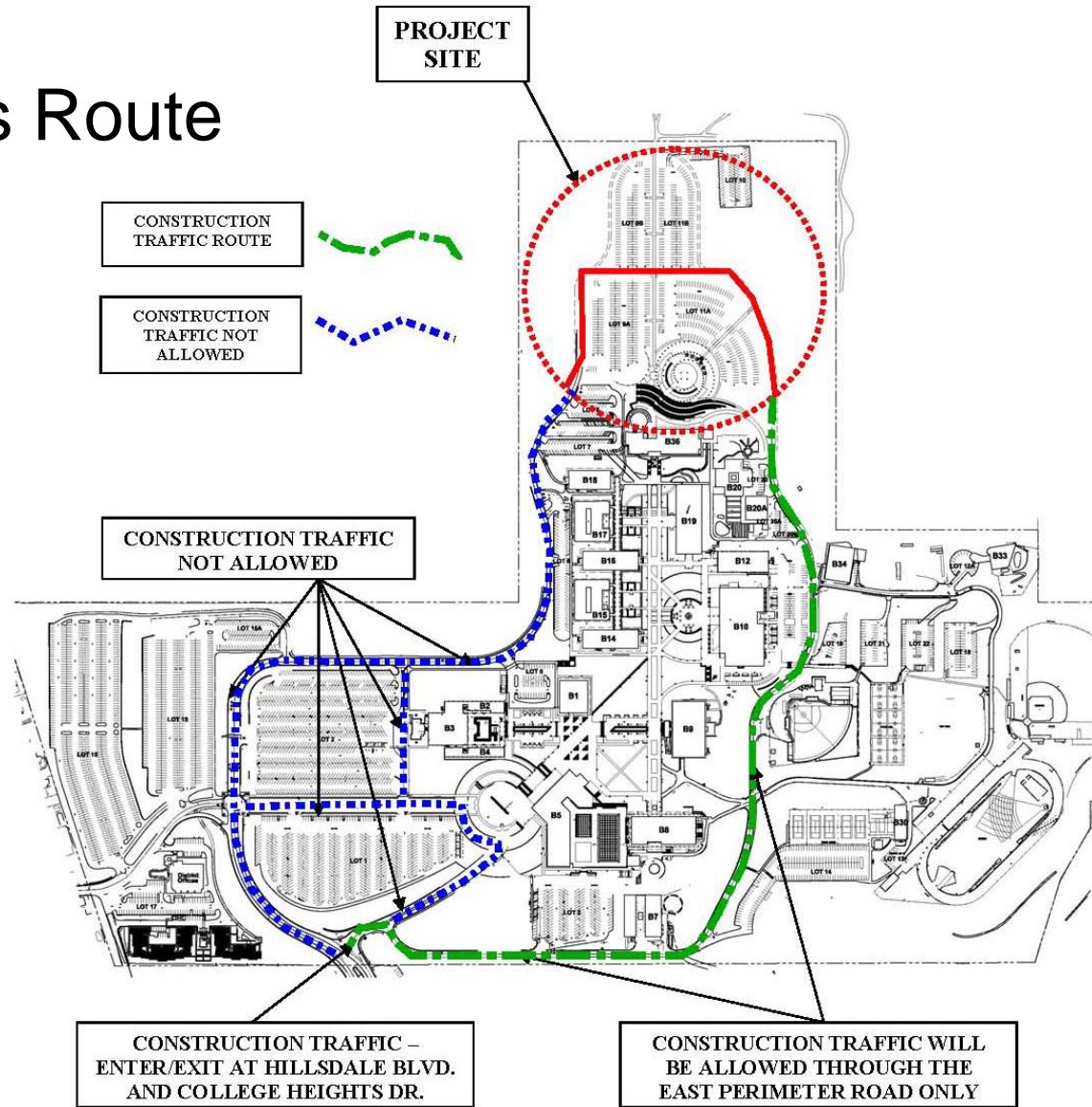


- Safety
 - Site Perimeter Enclosure Fencing
 - Site Safety Signage
 - GC Point of Contact On Site at all times
 - Emergency Vehicle through road access must be maintained at all times



Occupied Campus Logistics

Campus Access Route



Site Logistics Plan





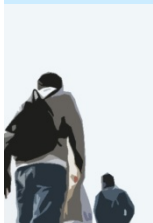
- Project **Contract Documents** are available at ARC/ Elite reprographics for a fee:

- (415) 957-1234 or <http://www.e-arc.com/locations/303>

- Project **Contract Documents** and **Reference Documents** are also available at the District project website:

http://www.smccd.edu/accounts/smccd/departments/facilities/CSM_NorthGateway_02.shtml

- Also at Bay Area Plan rooms



Bid Documents



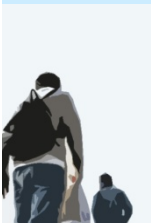
Questions & Answers

Thank You

for Your Interest in the SMCCCD
Capital Improvement Program!

<http://www.smccd.edu/accounts/smccd/departments/facilities/>

You are Encouraged to Walk the Site



Questions & Answers