

**BUILDING 5 DINING ROOM MODERNIZATION – RFP 076
CAÑADA COLLEGE
MANDATORY PRE-BID CONFERENCE**

AUGUST 25, 2011





- **LINDA DA SILVA, EXECUTIVE DIRECTOR, FACILITIES PLANNING DEPARTMENT**
- **BARRY CHIN, DESIGN MANAGER, FACILITIES PLANNING DEPARTMENT**

- **PEPPER POWELL, PROJECT COORDINATOR - BIDDING**
- **STEVE OPSON, PROJECT COORDINATOR - TECHNICAL**

- **JOSÉ NUÑEZ, VICE CHANCELLOR OF FACILITIES**
- **DANNY GLASS, FACILITIES OPERATIONS MANAGER, CAÑADA COLLEGE**
- **JOZSEF VERES CHIEF ENGINEER, CAÑADA COLLEGE**

- **ELIZABETH WITT, PROJECT ARCHITECT, BCA ARCHITECTS**
- **NIK SERNANDE, ARCHITECT, BCA ARCHITECTS**

- **LINDA RIZZOLI, SWINERTON MANAGEMENT & CONSULTING**
(CONSTRUCTION MANAGER)

- **CIS INC. (INSPECTOR OF RECORD)**



MEET THE TEAM



- **WELCOME AND INTRODUCTIONS**
- **PREBID CONFERENCE ADMINISTRATION**
- **BID & CONTRACT AWARD SCHEDULE**
- **PROJECT OVERVIEW**
- **WORK SEQUENCE**
- **OCCUPIED CAMPUS COORDINATION REQUIREMENTS**
- **BID & CONTRACT DOCUMENTS**
- **QUESTION & ANSWER**



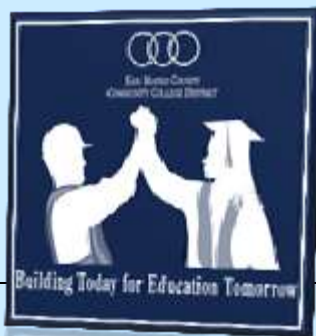
AGENDA



- **MANDATORY CONFERENCE** (ATTENDANCE IS REQUIRED FOR PRIME BIDDERS):
 - **AUGUST 25, 2011 2:30 PM**
 - **PLEASE SIGN IN**
- **PREBID CONFERENCE ATTENDANCE RECEIPT**



PREBID CONFERENCE ADMINISTRATION



- MANDATORY PREBID CONFERENCE: THURSDAY, AUGUST 25, 2011
- PLANS AVAILABLE: SEPTEMBER 8, 2011
- LAST DAY FOR WRITTEN RFI'S: FRIDAY, SEPTEMBER 23, 2011
- LAST DAY THAT ADDENDA WILL BE ISSUED: WEDNESDAY, SEPTEMBER 28, 2011
- BIDS DUE @ CSM BUILDING 12: OCTOBER 4 @ 2:00 P.M.
- SMCCCD BOARD OF TRUSTEES MEETING (ANTICIPATED CONTRACT APPROVAL): OCTOBER 26, 2011
- ANTICIPATED SUBSTANTIAL COMPLETION: APRIL 6, 2012

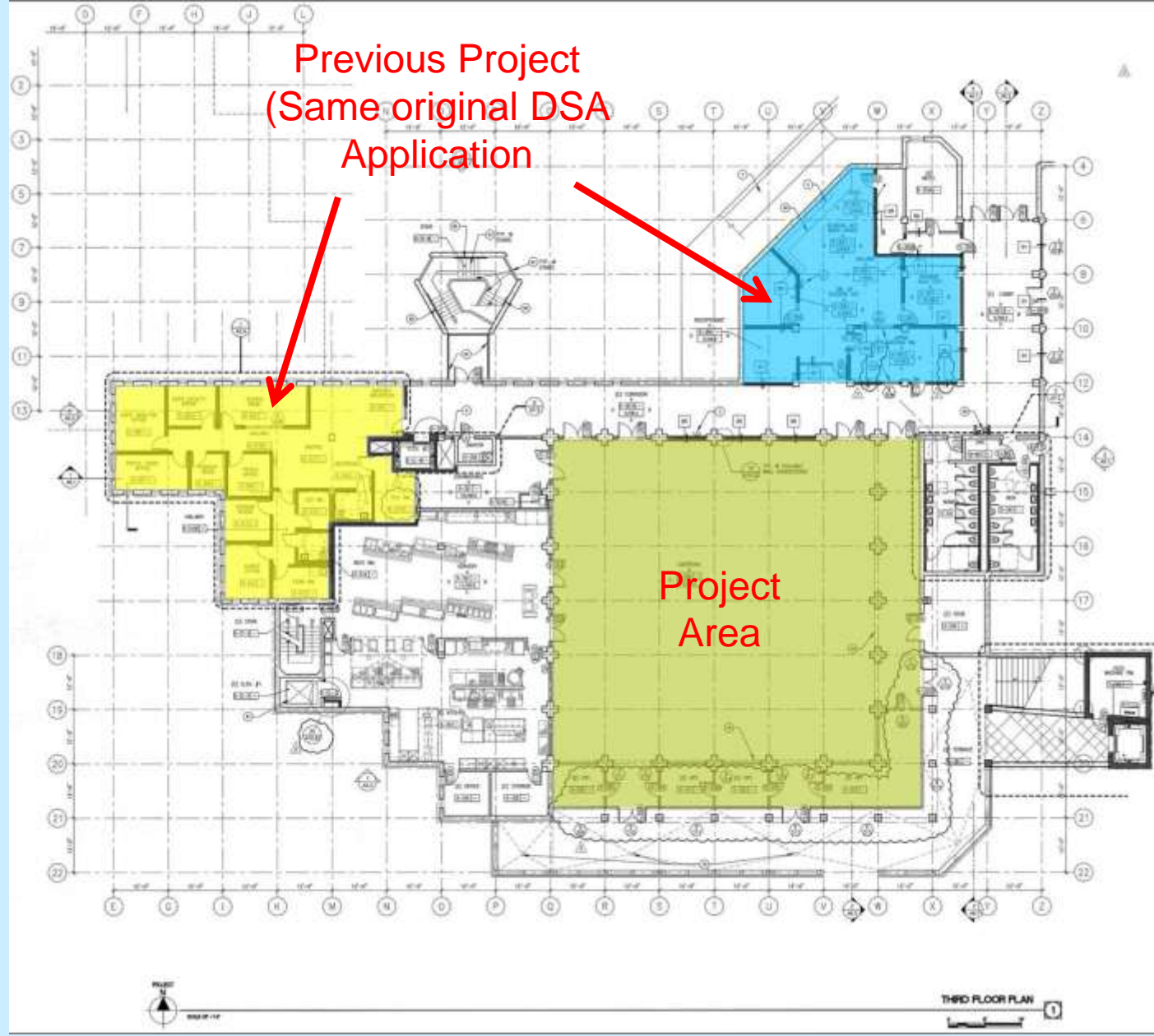


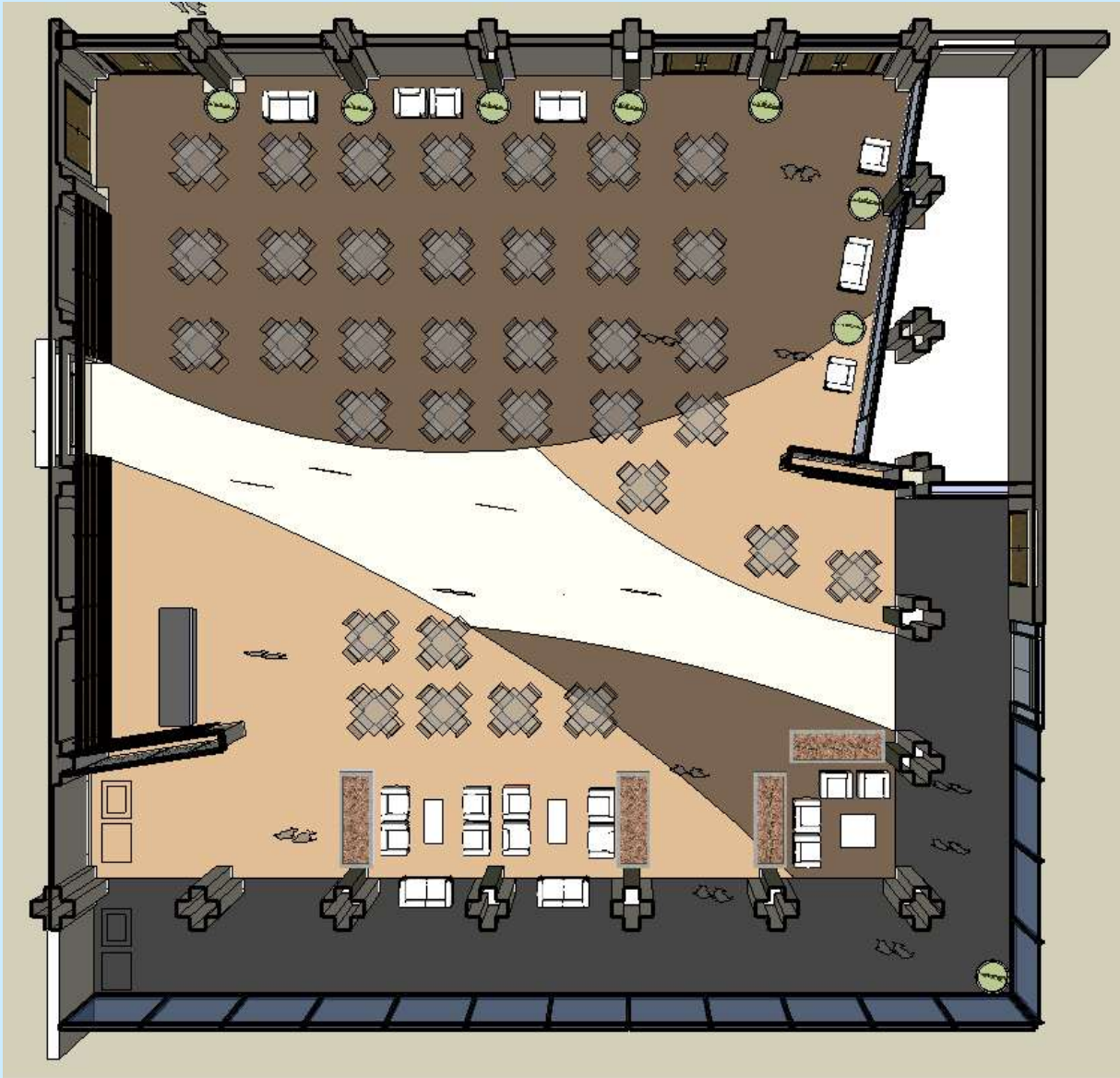
BID & CONTRACT AWARD SCHEDULE

MAJOR MILESTONES



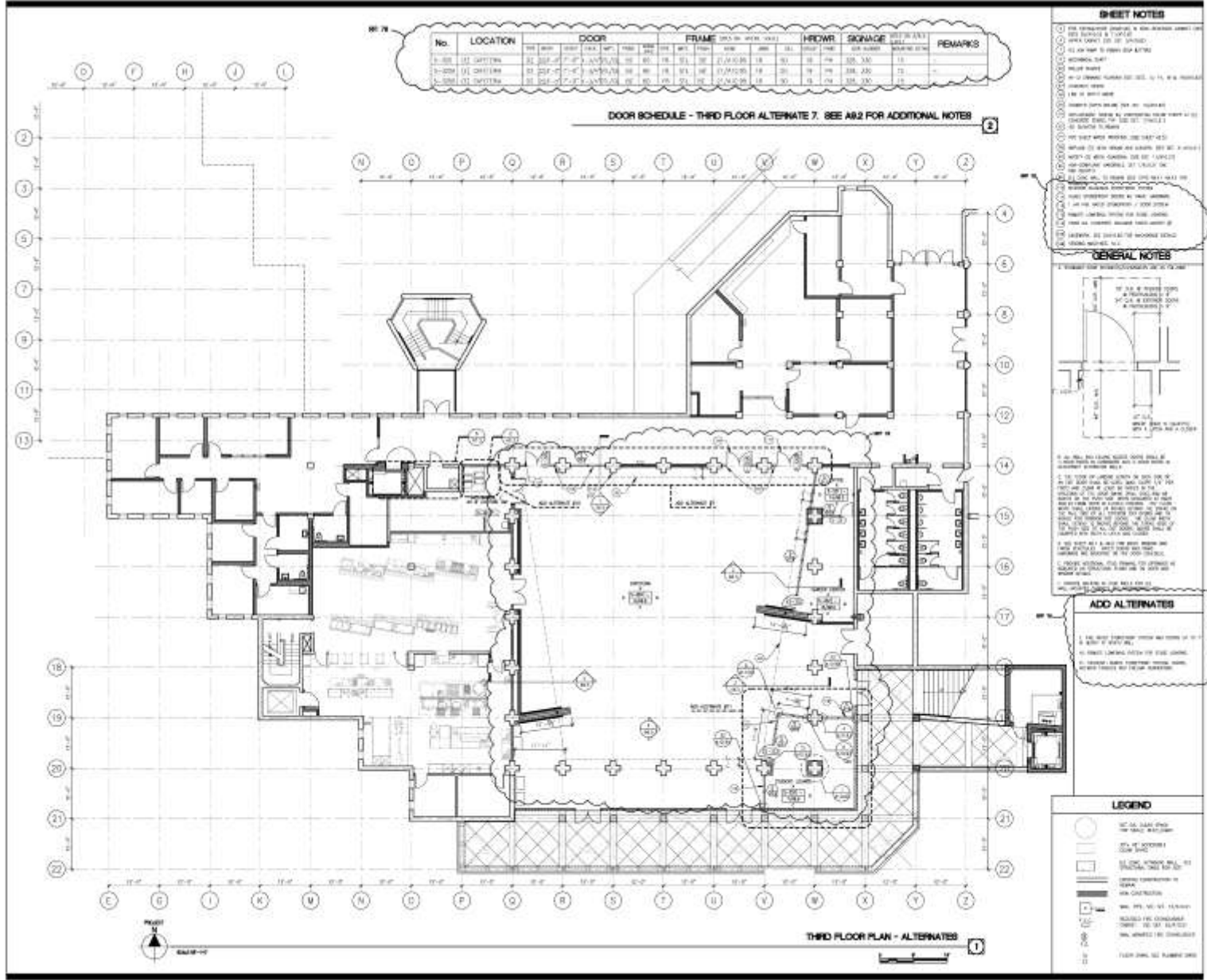
Previous Project
(Same original DSA
Application)











BCA

architecture
planning
interiors

San Jose Office Associates, Inc.
240 Palomar Ave.
San Jose, California 95128
Tel: 408.955.1000
Fax: 408.955.1009
www.BCAinc.com

NO.	DESCRIPTION	DATE
1	PREPARED FOR PERMITTING	05-12-10
2	REVISED FOR PERMITTING	05-12-10
3	REVISED FOR PERMITTING	05-12-10
4	REVISED FOR PERMITTING	05-12-10
5	REVISED FOR PERMITTING	05-12-10

SCALE: 1/8" = 1'-0"

BUILDINGS 5 & 6 RENOVATIONS

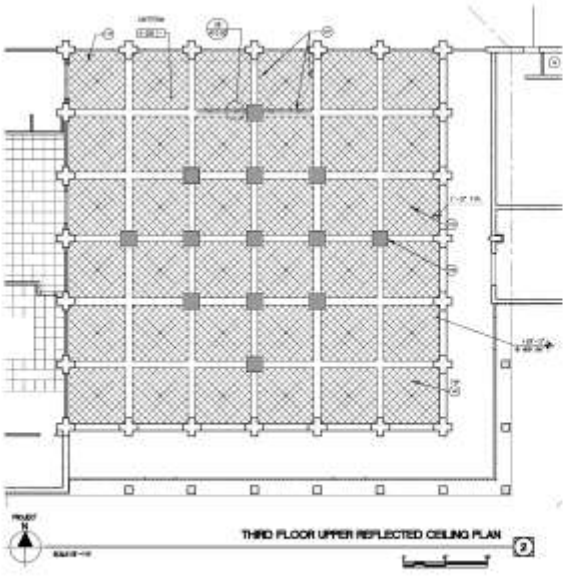
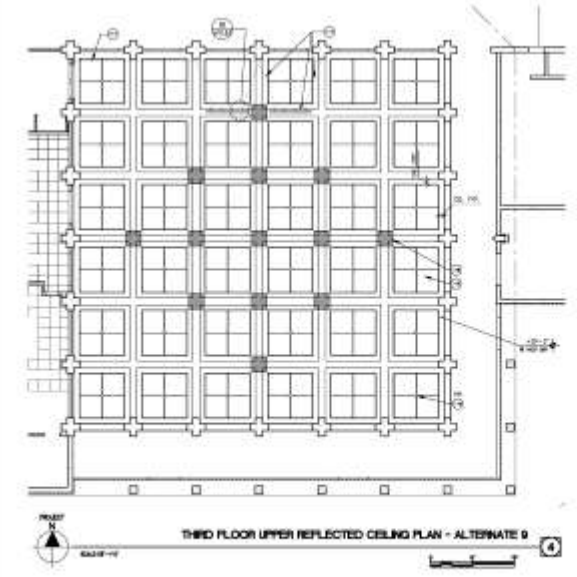
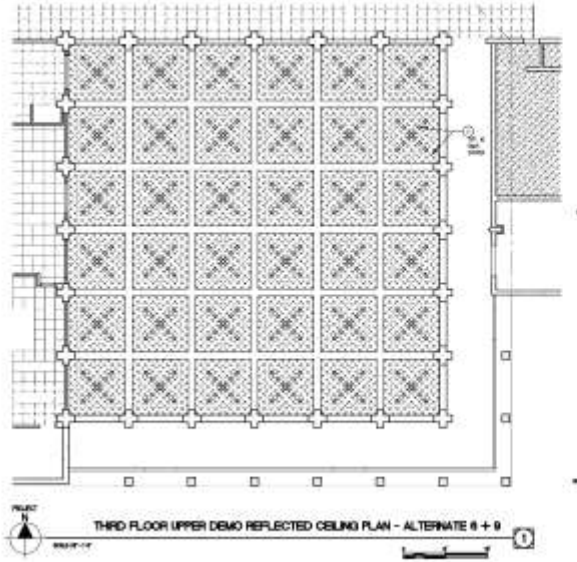
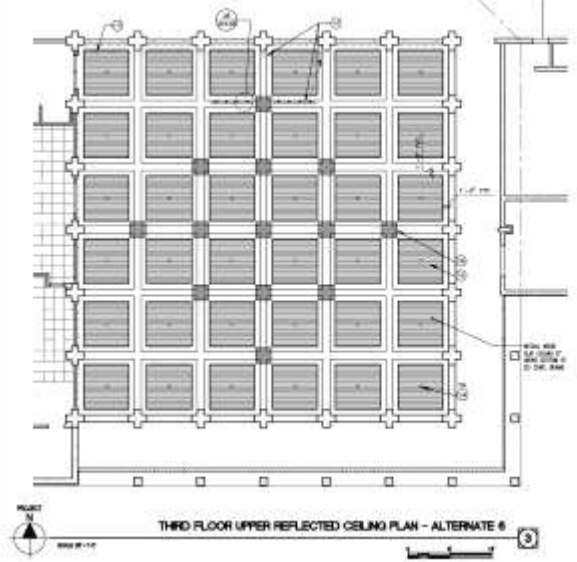
San Mateo County Community College District

CAÑADA COLLEGE

4200 Farm Hill Boulevard
Redwood City, CA 94051

THIRD FLOOR PLAN -
ADD ALTERNATES

Sheet No. **A2.6R**



SHEET NOTES

1. DEMO TO EXISTING REFLECTED CEILING, 1/2" x 1/2" GRID. SEE SHEET 03-100 FOR DEMO PLAN.
2. EXISTING REFLECTED CEILING.
3. REFLECTED CEILING, 1/2" x 1/2" GRID.
4. REFLECTED CEILING, 1/2" x 1/2" GRID, 1/4" HUNG.
5. REFLECTED CEILING, 1/2" x 1/2" GRID, 1/4" HUNG, 1/2" SPACING.
6. REFLECTED CEILING, 1/2" x 1/2" GRID, 1/4" HUNG, 1/2" SPACING, 1/2" HUNG.
7. REFLECTED CEILING, 1/2" x 1/2" GRID, 1/4" HUNG, 1/2" SPACING, 1/2" HUNG, 1/2" SPACING.
8. REFLECTED CEILING, 1/2" x 1/2" GRID, 1/4" HUNG, 1/2" SPACING, 1/2" HUNG, 1/2" SPACING, 1/2" HUNG.
9. REFLECTED CEILING, 1/2" x 1/2" GRID, 1/4" HUNG, 1/2" SPACING, 1/2" HUNG, 1/2" SPACING, 1/2" HUNG, 1/2" SPACING.
10. REFLECTED CEILING, 1/2" x 1/2" GRID, 1/4" HUNG, 1/2" SPACING, 1/2" HUNG, 1/2" SPACING, 1/2" HUNG, 1/2" SPACING, 1/2" HUNG.

GENERAL NOTES

1. SEE SHEET 03-100 FOR DEMO PLAN.
2. SEE EXISTING REFLECTED CEILING FOR LIGHT FIXTURES.
3. SEE REFLECTED CEILING PLAN FOR LIGHT FIXTURES.
4. SEE SHEET 03-100 FOR DEMO PLAN.
5. SEE REFLECTED CEILING PLAN FOR LIGHT FIXTURES.
6. SEE REFLECTED CEILING PLAN FOR LIGHT FIXTURES.
7. SEE REFLECTED CEILING PLAN FOR LIGHT FIXTURES.
8. SEE REFLECTED CEILING PLAN FOR LIGHT FIXTURES.
9. SEE REFLECTED CEILING PLAN FOR LIGHT FIXTURES.
10. SEE REFLECTED CEILING PLAN FOR LIGHT FIXTURES.

ADD ALTERNATES

1. REFLECTED CEILING, 1/2" x 1/2" GRID, 1/4" HUNG, 1/2" SPACING, 1/2" HUNG, 1/2" SPACING, 1/2" HUNG, 1/2" SPACING, 1/2" HUNG.
2. REFLECTED CEILING, 1/2" x 1/2" GRID, 1/4" HUNG, 1/2" SPACING, 1/2" HUNG, 1/2" SPACING, 1/2" HUNG, 1/2" SPACING, 1/2" HUNG.
3. REFLECTED CEILING, 1/2" x 1/2" GRID, 1/4" HUNG, 1/2" SPACING, 1/2" HUNG, 1/2" SPACING, 1/2" HUNG, 1/2" SPACING, 1/2" HUNG.
4. REFLECTED CEILING, 1/2" x 1/2" GRID, 1/4" HUNG, 1/2" SPACING, 1/2" HUNG, 1/2" SPACING, 1/2" HUNG, 1/2" SPACING, 1/2" HUNG.
5. REFLECTED CEILING, 1/2" x 1/2" GRID, 1/4" HUNG, 1/2" SPACING, 1/2" HUNG, 1/2" SPACING, 1/2" HUNG, 1/2" SPACING, 1/2" HUNG.

LEGEND

- REFLECTED CEILING, 1/2" x 1/2" GRID, 1/4" HUNG, 1/2" SPACING, 1/2" HUNG, 1/2" SPACING, 1/2" HUNG, 1/2" SPACING, 1/2" HUNG.
- REFLECTED CEILING, 1/2" x 1/2" GRID, 1/4" HUNG, 1/2" SPACING, 1/2" HUNG, 1/2" SPACING, 1/2" HUNG, 1/2" SPACING, 1/2" HUNG.
- REFLECTED CEILING, 1/2" x 1/2" GRID, 1/4" HUNG, 1/2" SPACING, 1/2" HUNG, 1/2" SPACING, 1/2" HUNG, 1/2" SPACING, 1/2" HUNG.
- REFLECTED CEILING, 1/2" x 1/2" GRID, 1/4" HUNG, 1/2" SPACING, 1/2" HUNG, 1/2" SPACING, 1/2" HUNG, 1/2" SPACING, 1/2" HUNG.
- REFLECTED CEILING, 1/2" x 1/2" GRID, 1/4" HUNG, 1/2" SPACING, 1/2" HUNG, 1/2" SPACING, 1/2" HUNG, 1/2" SPACING, 1/2" HUNG.
- REFLECTED CEILING, 1/2" x 1/2" GRID, 1/4" HUNG, 1/2" SPACING, 1/2" HUNG, 1/2" SPACING, 1/2" HUNG, 1/2" SPACING, 1/2" HUNG.
- REFLECTED CEILING, 1/2" x 1/2" GRID, 1/4" HUNG, 1/2" SPACING, 1/2" HUNG, 1/2" SPACING, 1/2" HUNG, 1/2" SPACING, 1/2" HUNG.
- REFLECTED CEILING, 1/2" x 1/2" GRID, 1/4" HUNG, 1/2" SPACING, 1/2" HUNG, 1/2" SPACING, 1/2" HUNG, 1/2" SPACING, 1/2" HUNG.
- REFLECTED CEILING, 1/2" x 1/2" GRID, 1/4" HUNG, 1/2" SPACING, 1/2" HUNG, 1/2" SPACING, 1/2" HUNG, 1/2" SPACING, 1/2" HUNG.
- REFLECTED CEILING, 1/2" x 1/2" GRID, 1/4" HUNG, 1/2" SPACING, 1/2" HUNG, 1/2" SPACING, 1/2" HUNG, 1/2" SPACING, 1/2" HUNG.

BCA
architecture
planning
interiors

Member Office Associates, Inc.
 210 Townsend Ave.
 Redwood City, California 94061
 T: 415.444.1000
 F: 415.444.1000
 www.3CAandInteriors.com

PROJECT: BUILDING 5 & 6 RENOVATIONS
 SHEET: 03-100
 SCALE: 1/4" = 1'-0"

DATE: 04-11-07
 BY: SP2/BB/ML
 CHECK: 04-11-07

BUILDINGS 5 & 6 RENOVATIONS
 San Mateo County Community College District

CAÑADA COLLEGE
 4299 Farm Hill Boulevard
 Redwood City, CA 94061

THIRD FLOOR UPPER REFLECTED CEILING PLAN - ADD ALTERNATES

DATE: 04/11/07
 BY: SP2/BB/ML
 CHECK: 04/11/07
 SCALE: 1/4" = 1'-0"

A3.34R



**CANADA COLLEGE
SAN MATEO COUNTY COMMUNITY COLLEGE DISTRICT
4200 FARM HILL BLVD.
REDWOOD CITY, CA 94061**



CAÑADA COLLEGE OVERVIEW





CONCURRENT CONSTRUCTION ALERT AND EVENTS

FINALS:

DECEMBER 12, 2011 TO DECEMBER 17, 2011

CAMPUS POWER DOWN:

DECEMBER 19, 2011 TO JANUARY 2, 2012





- ***CAÑADA COLLEGE IS AN OCCUPIED CAMPUS***
- ***COLLEGE EDUCATIONAL MISSION IS PARAMOUNT***
- ***CONSTRUCTION LOGISTICS MUST ACCOMMODATE THE COLLEGE'S SCHEDULE, EVENTS AND PRIORITIES***

- **COMMUNICATION WITH CONSTRUCTION MANAGER**
- **WEEKLY OWNER/ARCHITECT/CONTRACTOR MEETING**
- **CONCURRENT PROJECT COORDINATION**
 - **PROTECT EXISTING UTILITIES**
 - **STUDY AS-BUILTS**
 - **FIELD REVIEW WITH CHIEF ENGINEER**
- **ADVANCE NOTICE – UTILITY SHUTDOWNS/ACCESS INTERRUPTIONS**
- **SIGNAGE – TRAFFIC CONTROL/PEDESTRIAN RE-DIRECT**
- **CONTRACTOR PARKING – PARKING LOT 5, WEST ROW**
- **STAGING AND LAYDOWN AREAS – PARKING LOT 5, WEST ROW**
- **SAFETY –**
 - LOCAL WORK AREA ENCLOSURE FENCING**
 - SITE SAFETY SIGNAGE**
 - GC POINT OF CONTACT ON SITE – AT ALL TIMES**



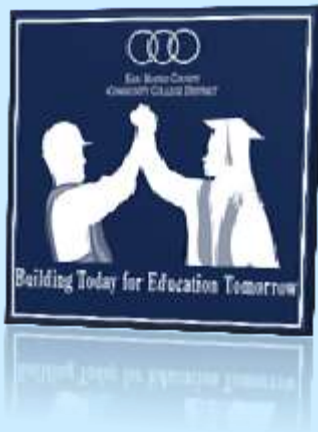
OCCUPIED CAMPUS LOGISTICS



- Project documents are available at ARC NorCal (formerly Elite Reprographics) for a fee
 - (415)957-1234 or <http://www.eliterepro.com/>
- Also available at the District project website at:
- <http://www.smccd.edu/accounts/smccd/departments/facilities/CanDiningRoom.shtml>
- Bay Area Plan rooms



BID DOCUMENTS



THANK YOU
FOR YOUR INTEREST
IN OUR
CAPITAL IMPROVEMENT
PROGRAM!

[HTTP://WWW.SMCCD.EDU/ACCOUNTS/SMCCD/DEPARTMENTS/FACILITIES/](http://www.smccd.edu/accounts/smccd/departments/facilities/)



QUESTIONS & ANSWERS

