

COLLEGE OF SAN MATEO

BUILDING 34 MODERNIZATION

SMCCCD
3401 CSM Drive
San Mateo, CA 94402
College of San Mateo
1700 W. Hillsdale Blvd.
San Mateo, CA 94402

SHEET TITLE

BUILDING 34-FLOOR PLAN AND MEZZANINE PLAN

REVISIONS

NO.	DATE	DESCRIPTION

DATE	MARCH 11, 2011
DRAWN	JC
CHECKED	JC
SCALE	1/8" = 1'-0"
N&T JOB NO.:	2901.4

SHEET NUMBER

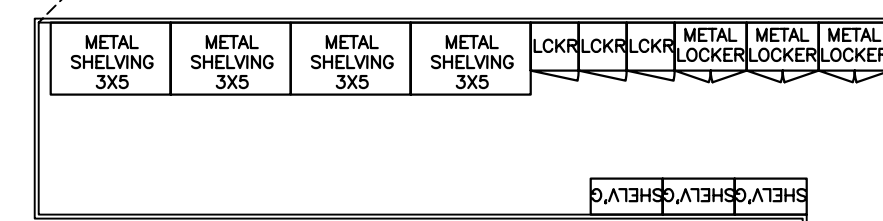
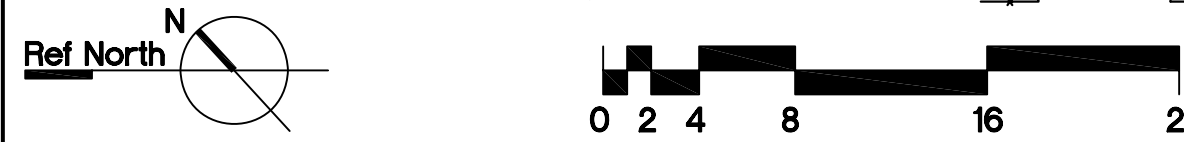
A2.10

KEY NOTES

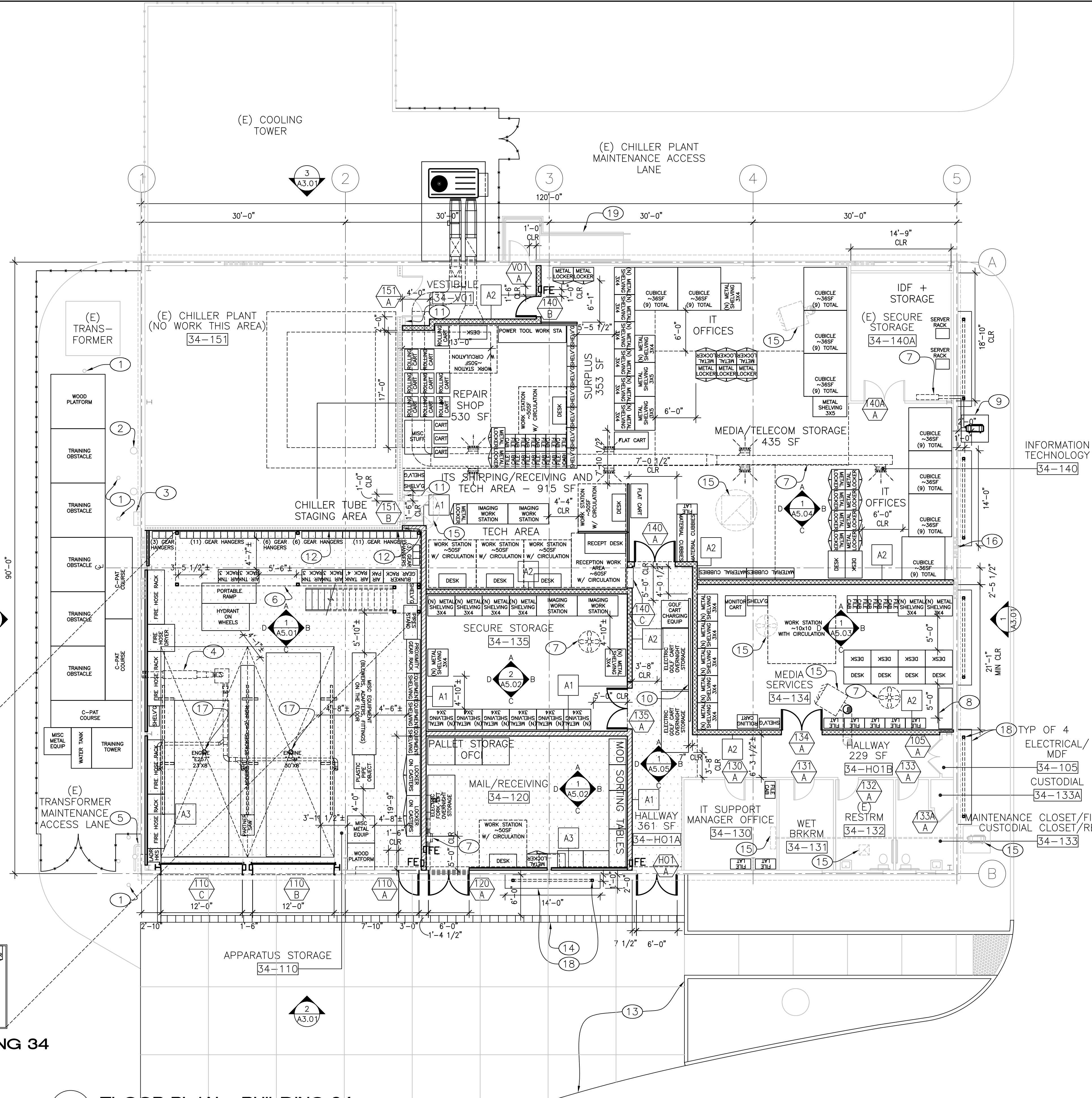
- 1 (E) 6" BOLLARD, TYP
- 2 (E) CHILLER PIPE, TYP
- 3 (E) EXHAUST
- 4 VEHICLE EXHAUST SYSTEM, EXHAUST THROUGH (E) LOUVER
- 5 (E) GAS REGULATOR
- 6 LINE OF MEZZANINE ABOVE
- 7 MECHANICAL EQUIPMENT ABOVE, SMD
- 8 REINSTALL (E) CASEWORK
- 9 MECHANICAL EQUIPMENT ON CONC PAD, SSD AND SMD
- 10 4x4 WD WHEEL STOP
- 11 (E) CHILLER PLANT SHUT-OFF SWITCH, DO NOT OBSTRUCT
- 12 FIRE SEAL (E) HOLES IN (E) 1-HR WALL
- 13 REINFORCED CONCRETE DRIVE, SC
- 14 TRAFFIC RATED TRENCH DRAIN, SC
- 15 (E) MECHANICAL EQUIPMENT, SMD
- 16 (E) MECHANICAL LOUVER ABOVE, TYP
- 17 FLOOR DRAIN, SPD. SLOPE FLOOR TO DRAIN 2% MAX
- 18 HSS TRELLIS AND PLANTER, SEE A3.01
- 19 (E) NON-ACCESSIBLE RAMP

LEGEND

- EXISTING STUD WALL
- EXISTING 1-HR RATED STUD WALL
- NEW FULL HT STUD WALL, FINISH STOPS AT 8'-0" AT BLOCK'G
- NEW FULL-HEIGHT STUD WALL
- NEW FURRED STUD WALL W/ 5/8" ACX PLYWD TO 12'-0" AFF
- EXISTING DOOR AND FRAME
- NEW DOOR AND FRAME
- FURNITURE PARTITION, OFOI
- FIRE EXTINGUISHER IN CABINET, SEE DETAIL 7/A8.02
- NEW CONCRETE FLOOR SLAB, SSD. SEE SPECIFICATIONS FOR VAPOR RETARDER INSTALLATION
- CHAIN LINK FENCE AND GATE SEE DETAIL 5/A8.02



MEZZANINE PLAN - BUILDING 34



1 FLOOR PLAN - BUILDING 34

1/8"=1'-0"