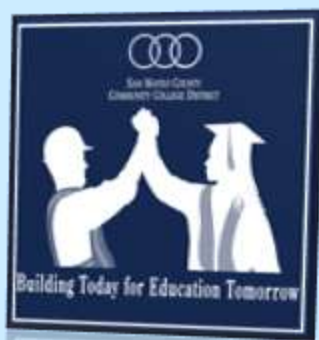


North Gateway Project Phase I:
Load Center 8
College of San Mateo
Mandatory Pre-Bid Conference

September 17 & 24, 2010





- Welcome and Introductions
- District Website Navigation
- Pre-Bid Conference Administration
- Qualification Requirements
- Project Schedule
- Project Overview
- Occupied Campus Coordination Requirements
- OCIP
- Contract & Reference Documents
- Question & Answer



Agenda





- **José Nuñez**, Vice Chancellor of Facilities
- **Diane Martinez**, Facilities Operations Manager, College of San Mateo
- **Moe Garza** Chief Engineer, College of San Mateo
- **Linda da Silva**, Executive Director, Construction Planning Department
- **Karen Powell**, Project Manager, Construction Planning Department
- **Pepper Powell**, Project Coordinator, Construction Planning Department



Meet the Owner Team



- **Merideth Marschak**, Project Architect, Noll & Tam Architects and Planners
- **Jim Cody**, Construction Administration, Noll & Tam Architects and Planners
- **John Westphal**, Structural Engineer, KPW
- **Jeff Sultan**, Electrical Engineer, JMS Power



Meet the Design Team



- **Mario Galeano**, Swinerton Management & Consulting (Campus Construction Manager)
- **Sajid Sulaiman**, Swinerton Management & Consulting (Project Construction Manager)
- **Sharon Iburg**, Keenan & Associates (OCIP)
- **Kurt Dodge**, CIS Inc. (Inspector of Record)



Meet the Construction Management Team



Aerial View – CSM – North Campus area





- **District Website** (District / College general):
www.smccd.edu
- **Business Opportunities** (Construction related):
<http://www.smccd.edu/accounts/smccd/departments/facilities/CSMBusOps.shtml>
- **Project Website** (Project related):
http://www.smccd.edu/accounts/smccd/departments/facilities/CSM_NorthGW01.shtml





- Mandatory Conference (attendance at *one conference* is required for prime bidders):
 - September 17, 2010 – 2:00 pm
 - September 24, 2010 – 2:00 pm
- Please Sign In
- Pre-Bid Conference Attendance Receipt





• Qualified Bidders

- **Prime** bidder must be listed on SMCCCD 2010 Pre-Qualified Contractors List

<http://www.smccd.edu/accounts/smccd/departments/facilities/PrequalCC.shtml>

- Listed C-10 Electrical Subcontractor must be included on SMCCCD CSM North Gateway Phase I: Load Center 8 Qualified C-10 list (If listed C-10 did not qualify for this project the bid will be deemed Non-Responsive)

http://www.smccd.edu/accounts/smccd/departments/facilities/20100810_CSMLC1QualifiedBidders.shtml



Qualification Requirements





- Qualified Prime Bidders may self-perform C-10 work if the Prime Bidder Qualified for the C-10 Scope.

<http://www.smccd.edu/accounts/smccd/departments/facilities/CSMBusOps.shtml>



Qualification Requirements

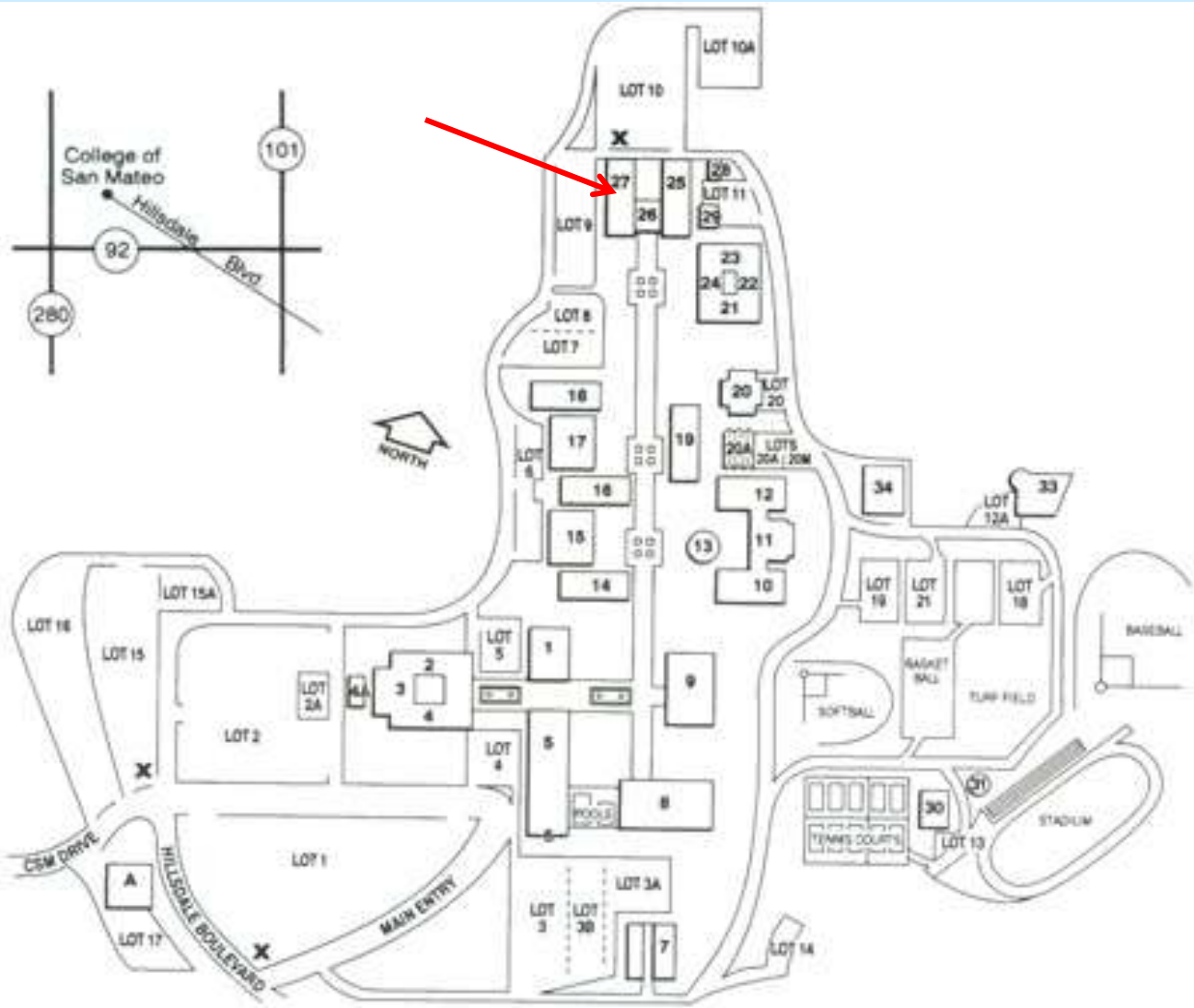


- **Legal Notices:** September 9 & 16, 2010
- **Bid Period:** September 13 – October 21, 2010
- **Last RFI Accepted:** 5 pm Monday October 11, 2010
- **Final Addenda Issued:** Friday October 15, 2010
- **Bid Submittal:** Thursday October 21, 2010
 - **Bids will accepted until, and *no later*, than 2 pm**
 - **Bids will be accepted at CSM Building 27, Construction Planning Department**



Bid Schedule





Bid delivery map



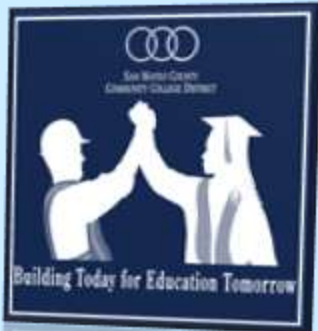


- **Protest Period:** October 22 – 29, 2010
- **Notice of Intent to Award:** ~October 27, 2010
- **SMCCCD Board of Trustees Approval of Contract Award**
November 17, 2010
- **Public Works Board Approval of Contract Award**
~December 1, 2010
- **Notice of Award** ~December 2, 2010
- **Notice to Proceed** ~December 20, 2010



Bid & Award Schedule





- **Substantial Completion:** 230 Calendar Days
Assuming late December 2010 NTP, Mid August 2011
- **Final Completion:** 260 Calendar Days
Assuming late December 2010 NTP, Mid September 2011



Construction Schedule



Merideth Marschak, Noll & Tam Architects and Planners

Project Overview

- LC8 & Enclosure
- Site Wall
- Tree Removal & Trimming, Landscaping

A small graphic in the bottom-left corner showing the silhouettes of two people walking, one taller and one shorter, against a light background.

Scope of Work

Jeff Sultan, JMS Power

Electrical Scope

- Decommissioning LC4
- Relocation of existing Transformer & Switch Gear, East of Bld 18
- Installation & Testing of LC8

Scope of Work





- *College of San Mateo is an Occupied Campus*
- *College Educational Mission is Paramount*
- *Construction logistics must accommodate the College's schedule, events and priorities*



Occupied Campus Logistics





- Communication with Construction Manager
- Weekly Owner/Architect/Contractor Meeting
- Site Utilization Plan – Weekly Updates
- Protect existing utilities
 - Study As-Builts
 - Field Review with Chief Engineer
 - Pothole Carefully



Occupied Campus Logistics

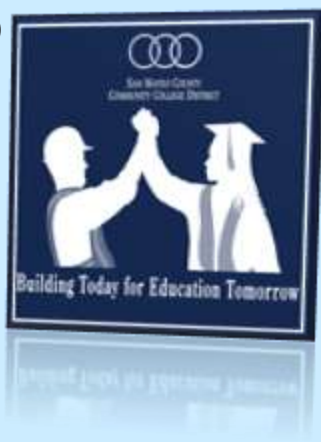




- Advance Notice Required – Utility Shutdowns/Access Interruptions
- Signage – Traffic Control/Pedestrian Re-direct
- Contractor Parking – Parking Lot 5, Maries Curie, in designated areas *only*
- Staging and Laydown Areas --- Parking Lot 5, Maries Curie, in designated areas *only*



Occupied Campus Logistics



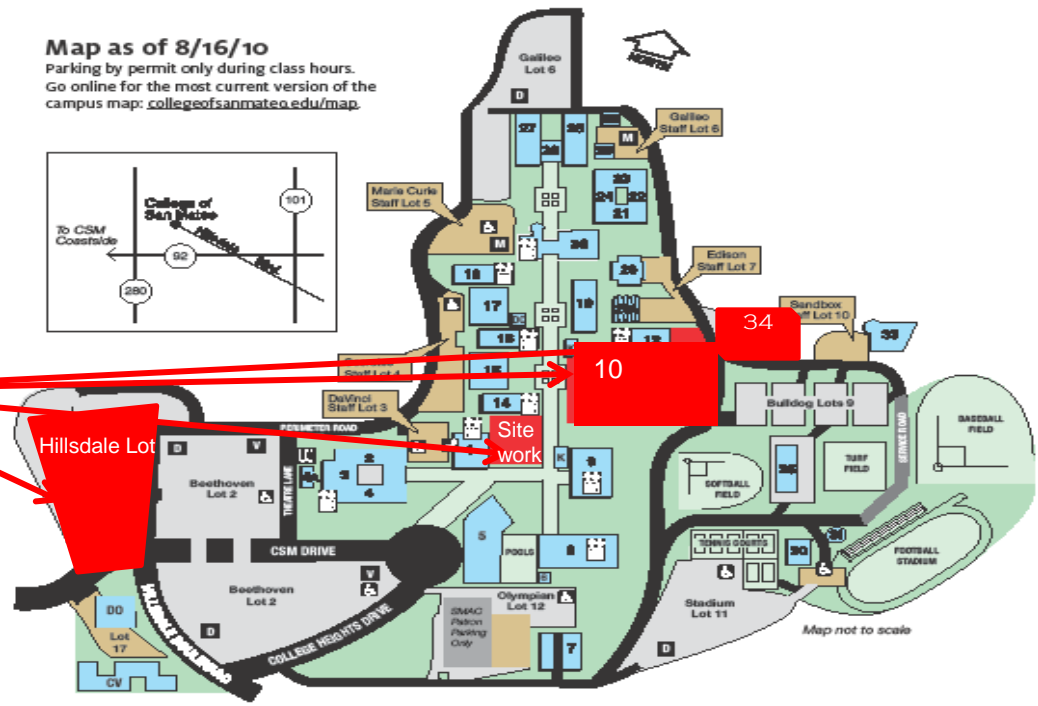
- Safety
 - Local Work Area Enclosure Fencing
 - Site Safety Signage
 - GC Point of Contact On Site at all times
 - Emergency Vehicle and Perimeter Road access

must be maintained at all times



Occupied Campus Logistics

Map as of 8/16/10
 Parking by permit only during class hours.
 Go online for the most current version of the
 campus map: collegeofsanmateo.edu/map.



- Buildings:**
- 1. Administration
 - 2. Art, Music
 - 3. Theatre
 - 4. Art
 - 4A. Ceramics/Sculpture
 - 5. Health & Wellness
 - Le Bulldog (Café)
 - San Mateo Athletic Club (SMAC)
 - 6. Pool Equipment Building
 - 7. Maintenance
 - 8. Gymnasium
 - 9. Library
 - 10. Construction Zone (College Center)
 - 12. East Hall
 - 14. South Hall
 - 15. Faculty Offices
 - 16. Central Hall
 - 17. Faculty Offices/Student Life
 - 18. North Hall
 - 19. Technology

- 20. Horticulture
- 20A. Horticulture Greenhouses
- 21. TBD
- 22. TBD
- 23. TBD
- 24. TBD
- 25. ITS/Media Services
- 26. Technology Classrooms
- 27. Graphics, Multimedia
- 28. TBD
- 29. TBD
- 30. Team House
- 31. Ticket Booth
- 32. Mary Meta Lazarus Child Development Center
- 34. Bookstore
- 35. Walter H. Moore Regional Public Safety Center
- 36. Science Building/Planetarium
- CV. College Vista - District Faculty/Staff Housing
- DC. Drip Coffee
- DO. District Administrative Offices - 3401 CSM Drive
- K. Kiosko (Temporary Cafeteria)

Legend:

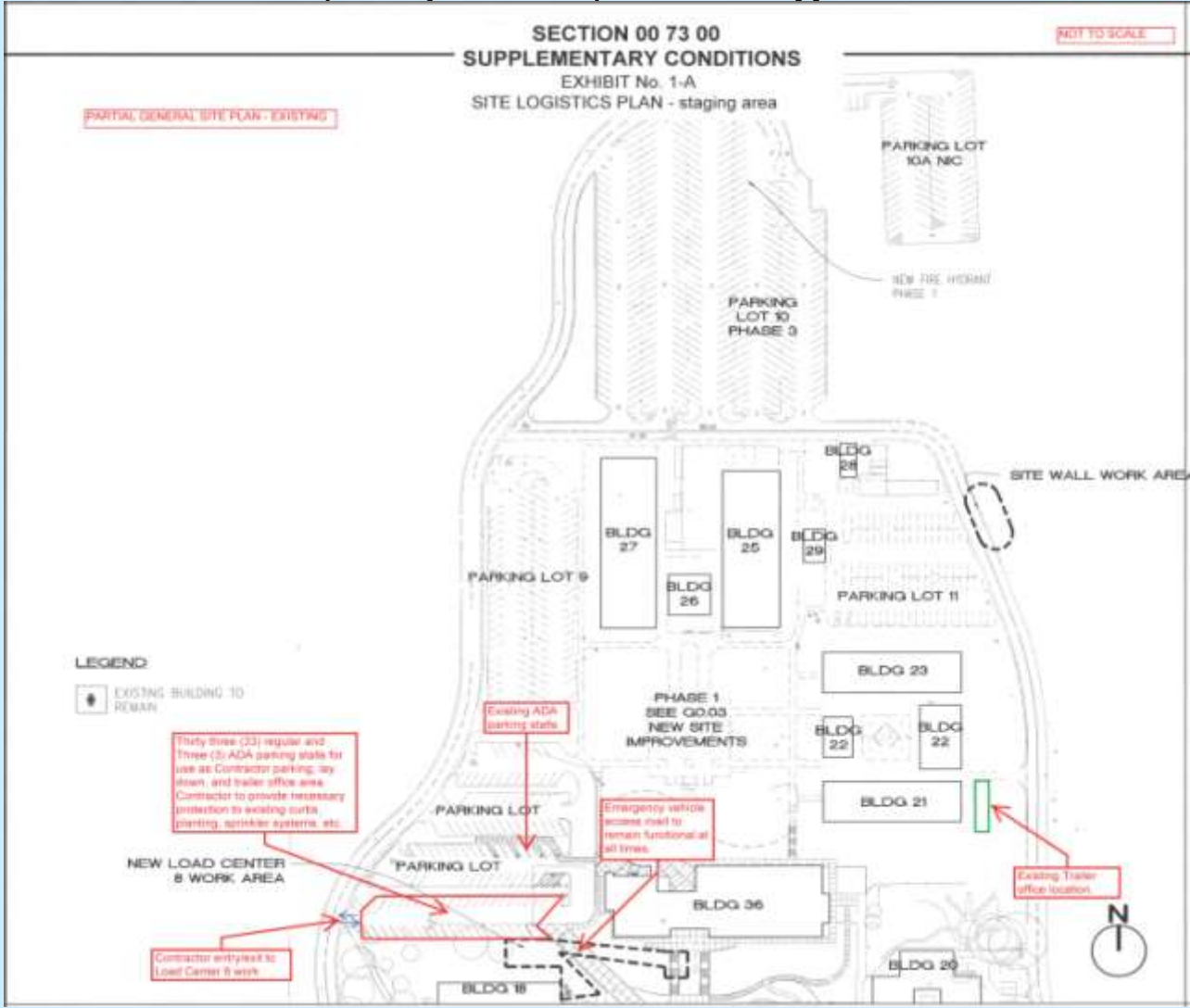
ATM	Elevator
Bus Stop	Payphone
Daily Parking Permit Machine	Visitor Parking Permit Machine
Disabled Parking (By special permit only)	Motorcycle Parking (No permit required)
Staff Lots	Construction Zone Out of Service

Construction
 zones
 in
 red

Overview of Construction Activity CSM 2010



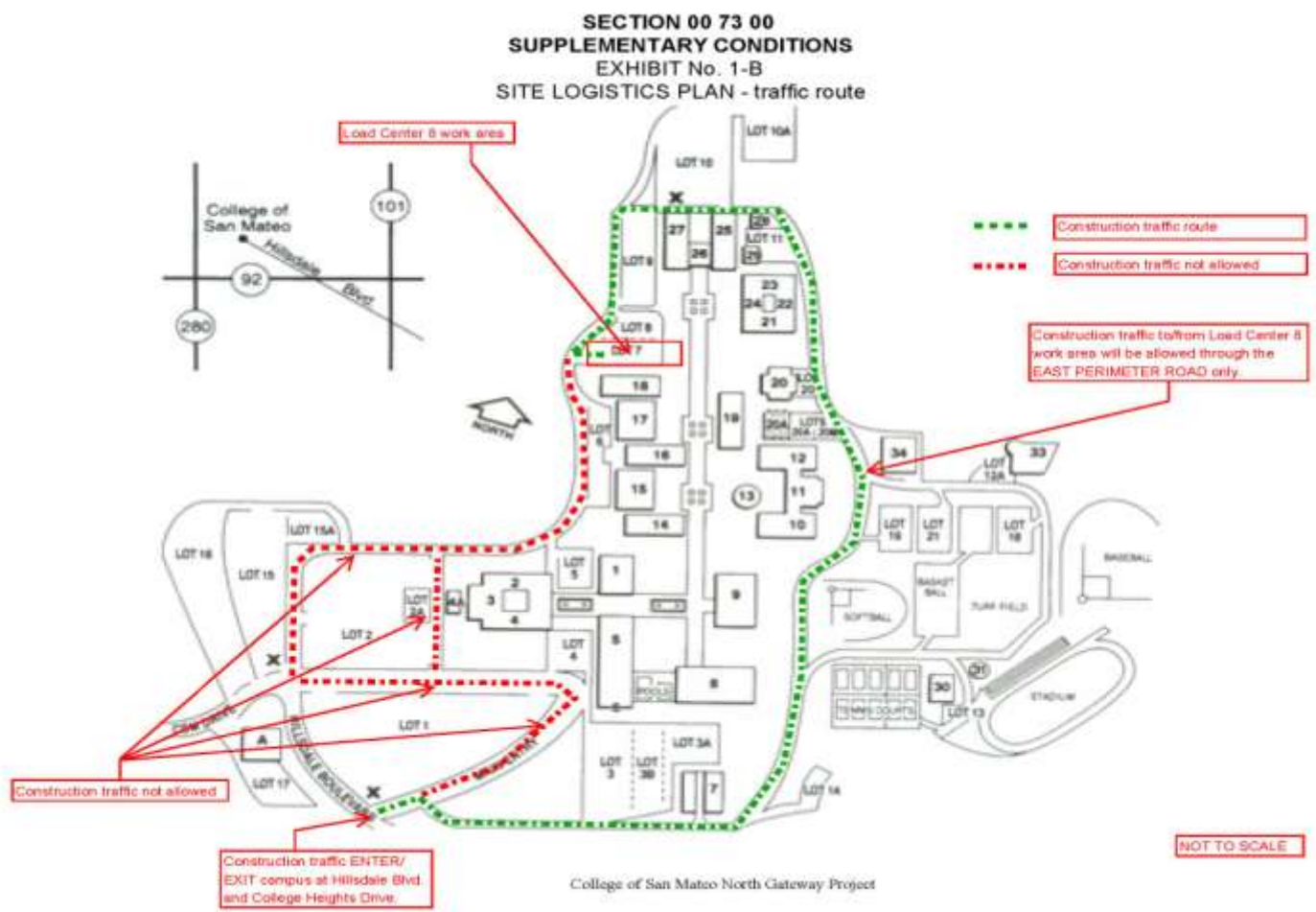
Contractor Office, Laydown, Parking



Site Logistics Plan



Campus Access Route



Site Logistics Plan





Sharon Iburg, Keenan & Associates:

- Definition of OCIP
- Bidding requirements: Insurance qualification form and evidence of IIPP
- Contractor safety and how to qualify for OCIP
 - Serious and Willful violations
 - IIPP
 - EMR
- Off-site insurance and auto liability coverage
- Base bid **SHALL NOT** include costs for insurance coverage provided under OCIP



OCIP

(Owner Controlled Insurance Program)





- Project **Contract Documents** are available at Elite reprographics for a fee:
 - (415) 957-1234 or <http://www.eliterepro.com/>

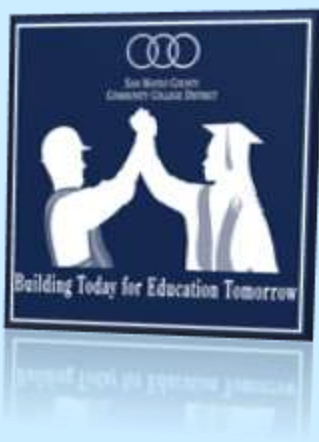
- Project **Contract** and **Reference Documents** are also available at the District project website:

<http://www.smccd.edu/accounts/smccd/departments/facilities/CSMBusOps.shtml>

- Bay Area Plan rooms



Bid Documents



Thank You
for Your Interest
in the SMCCCD
Capital Improvement
Program!

<http://www.smccd.edu/accounts/smccd/departments/facilities/>



Questions & Answers

