

SAN MATEO COUNTY
COMMUNITY COLLEGE DISTRICT

Capital Improvement Program Status Report

Bond Oversight Committee
September 24, 2008

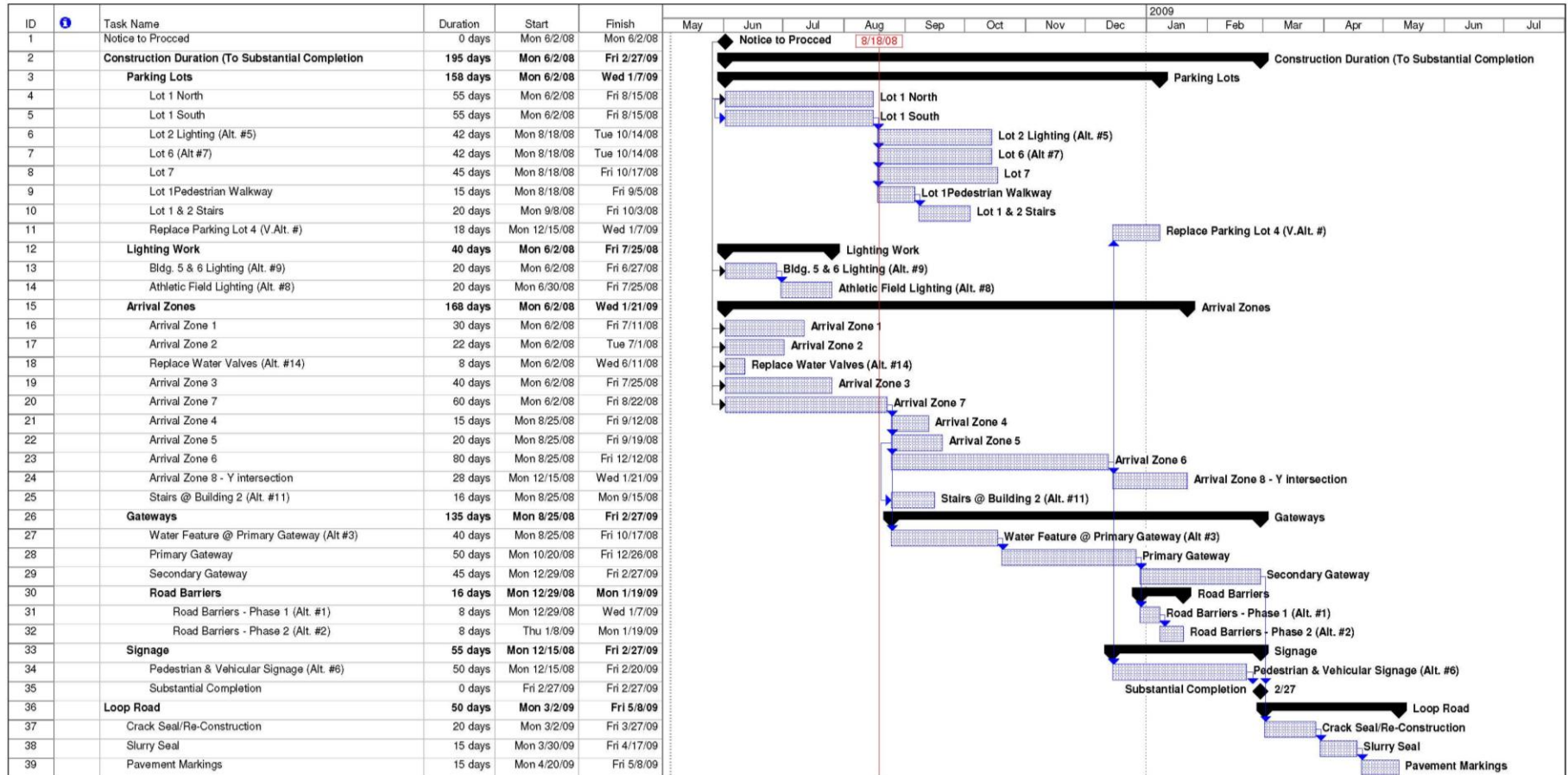


Cañada College Gateways/Circulation /Parking Project



- ✓ Project is on schedule in all different milestones
- ✓ Arrival Zones 1, 2, 3 are 75% substantially complete and work in Zones 4, 5, 6 are just beginning
- ✓ Parking Lots 1 and 6 overlay work substantially complete
- ✓ Parking Lot 1 and 2 stairs are complete, and lighting in Parking Lot 2 is in progress
- ✓ Secondary Entry work is about 50% substantially complete
- Completion: January 2009

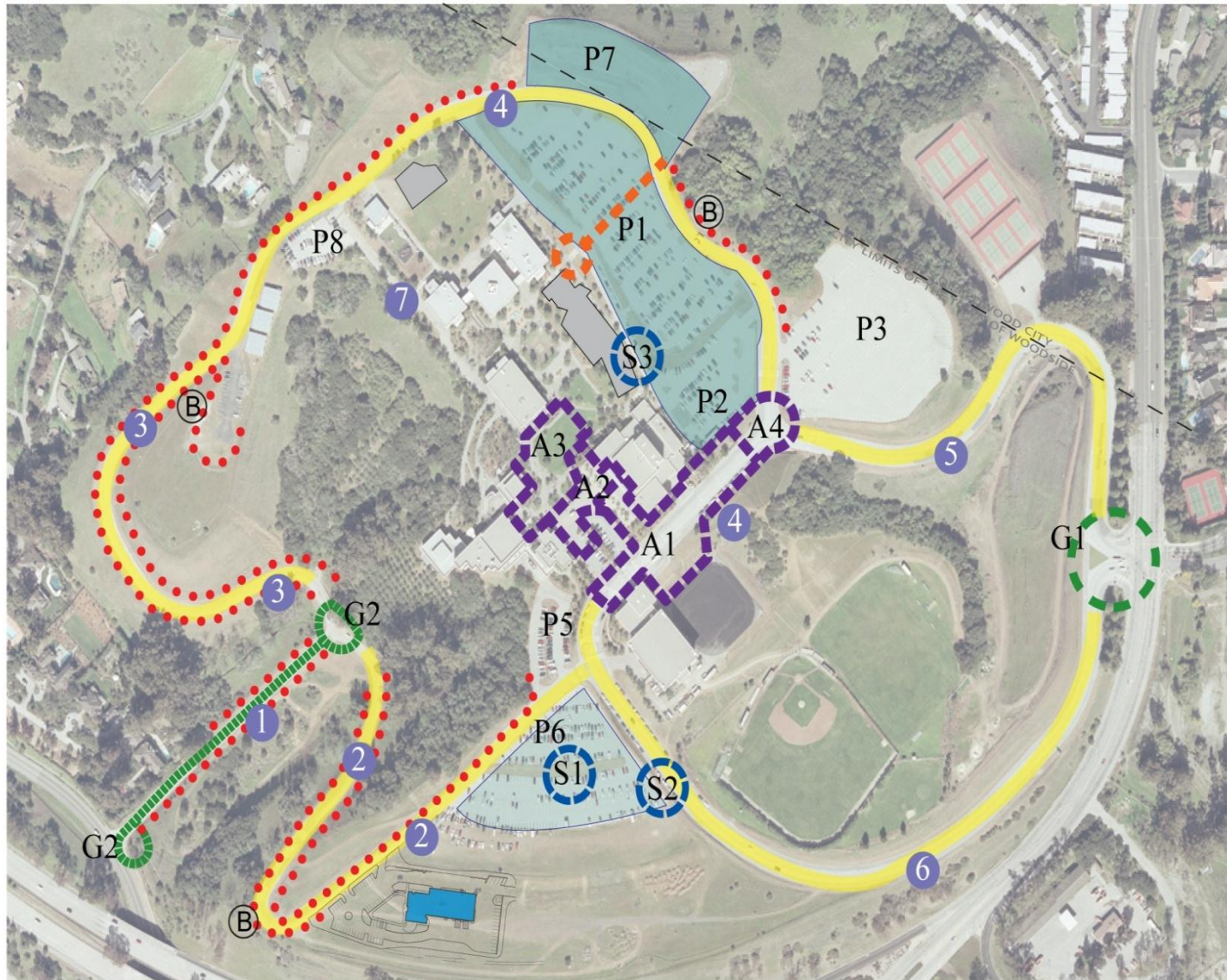
Cañada College Gateways Project Schedule



Project: Canada College Gateways -F
Date: Mon 5/5/08

Task		Milestone		Rolled Up Task		Rolled Up Progress		External Tasks		Group By Summary	
Progress		Summary		Rolled Up Milestone		Split		Project Summary			

Cañada College Gateways/Circulation /Parking Project



- G1 - Primary Entry
 - G2 - Secondary Entry
 - A1 - Arrivals Area
 - A2 - Arrival Plaza
 - A3 - Inner Plaza
 - Pedestrian Link
Bldg. 9 -- P1
 - P1 } Parking Lots
P2 } Overlay
 - P3 Proposed Facility Housing
 - P7 - Parking Lot
Re-do
 - P6 - Parking Lot
Slurry Seal
 - Roadway Slurry Seal
 - Road Barrier
 - S1, S2 & S3 - Access Stairways
- OTHER COMPONENTS:**
- Campus Signage
 - Campus Lighting Upgrades
 - Campus Security and Safety
Emergency Phones
 - Site Furniture: Selection of
Families/Allowance

Cañada College Gateways – Arrivals Area



Cañada College Gateways – Arrival Plaza



Cañada College Gateways – Inner Plaza



Cañada College Gateways – Parking Lot 6 Overlay



Cañada College Gateways – Secondary Entry



College of San Mateo CIP2 Design-Build Project

- ✓ New Building 5N – Allied Health & Wellness Building
- ✓ New Building 10N – Student Center
- ✓ Demolition of Buildings 5, 6, 10, 11, 13, T1 and Kiosko
- ✓ Sitework Improvements: Gateways & Quad Improvements, Parking, Paving, Sidewalk, Roadways
- ✓ Central Chiller Plant
- ✓ 12kVA Campus Power Distribution System Upgrade
- Design and Construction Period: Spring 2008 – Summer 2011



Building 5N: Allied Health & Wellness Building



- ✓ Demolition of Buildings 5, 6 Completed
- ✓ Building Pad Preparation In Progress
- ✓ Construction Documents submitted to DSA for approval

- DSA Approval: October 2008
- Groundbreaking: November 2008
- Completion: March 2010

CSM DB Project: Demolition of Buildings 5, 6



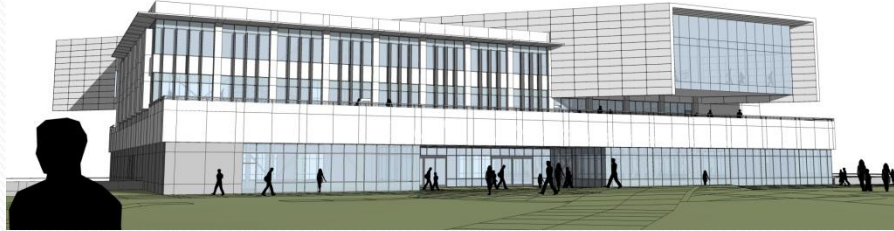
CSM DB Project: Demolition of Buildings 5, 6



CSM DB Project: Demolition of Buildings 5, 6



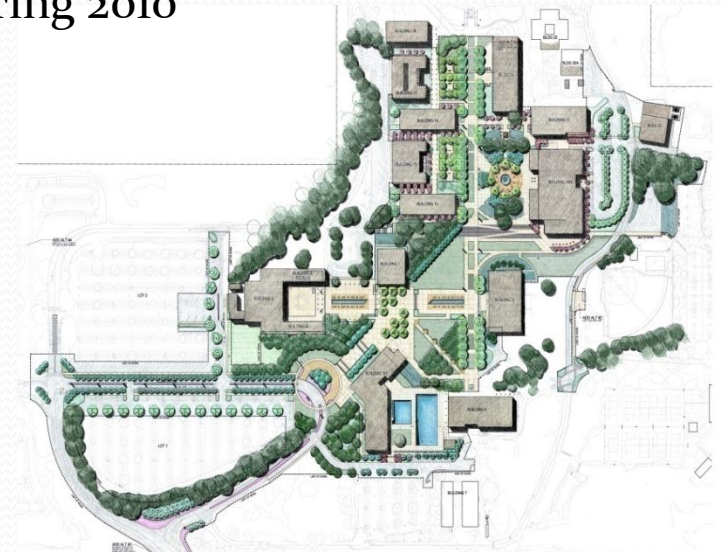
Building 10N: Administration and Student Services



- ✓ Construction documents submitted to DSA for review
 - ✓ Demolition of Buildings 10 and 11 scheduled for early February 2009
 - ✓ Building pad preparation and construction to begin after demolition
-
- DSA Approval: April 2009
 - Groundbreaking: May 2009
 - Completion: March 2011

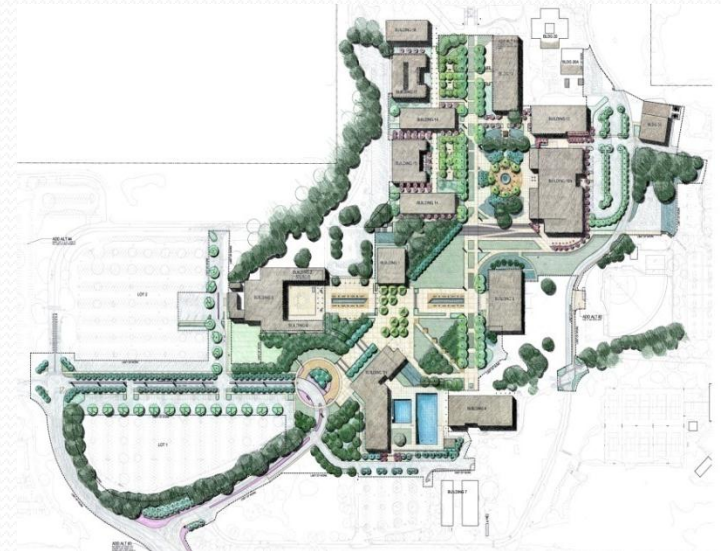
Sitework Improvements

- ✓ Fine Arts Courtyard work in progress
 - ✓ Sitework - 1st Phase demolition in progress
 - ✓ Sitework Phases 1 and 2 Construction documents submitted to DSA for review
-
- Fine Arts Courtyard Site work Completion: Early February 2009
 - Sitework – 1st Phase Start Date: Spring 2009
 - Sitework – 2nd Phase Start Date: Spring 2010
 - Completion: March 2011

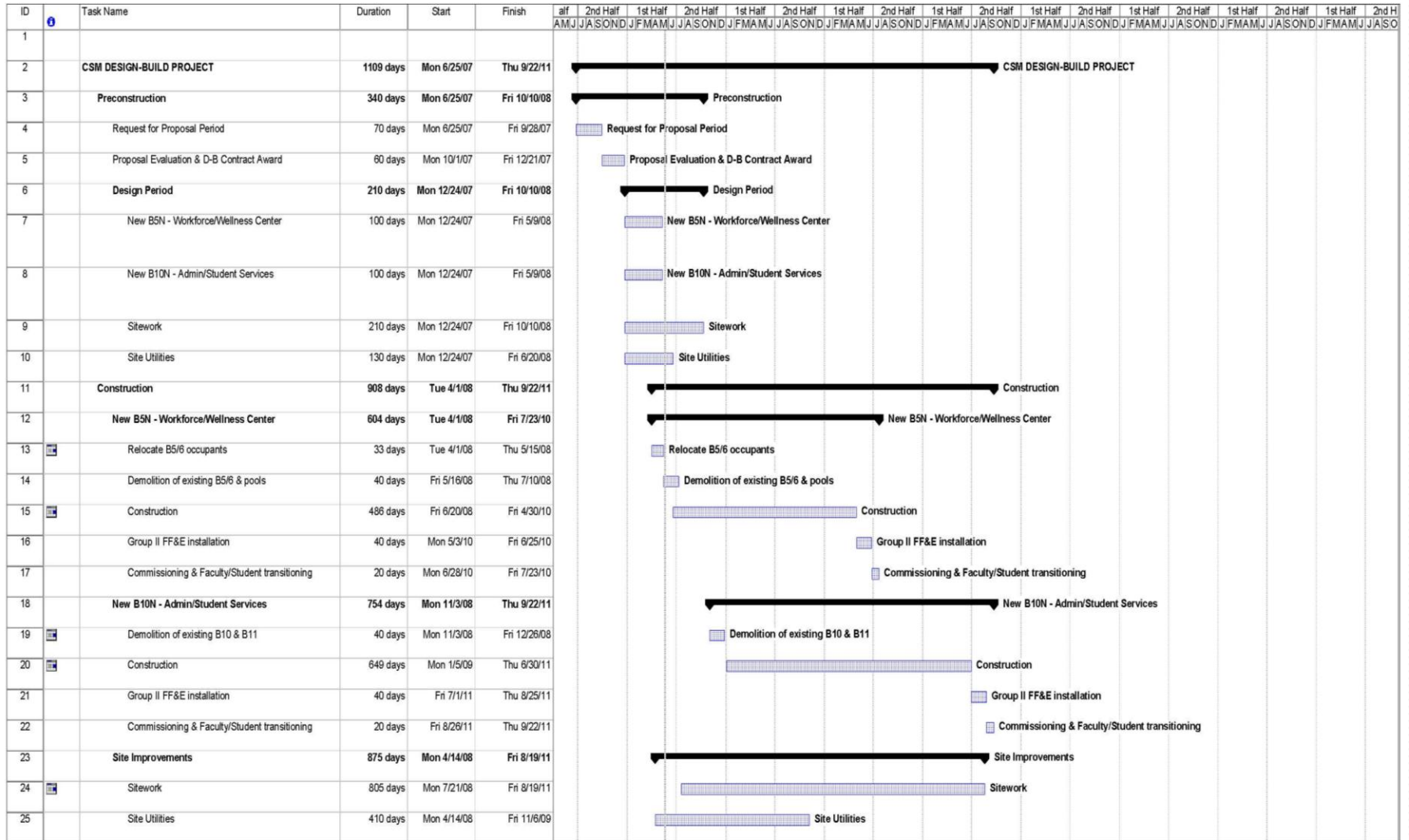


Infrastructure Improvements

- ✓ 12kVA Campus Electrical Distribution System upgrade to be completed during Winter Break 2008
- ✓ Central Chiller Plant design in process
- Completion: March 2011



College of San Mateo CIP2 Design Build Project Schedule*



*Dates subject to change

Skyline College CIP2 Design Build Project

- ✓ New Building 4N – Multicultural, Cosmetology, Classroom and Administration
 - ✓ New Building 11N - Automotive Transmission
 - ✓ Sitework Improvements: Gateways & Quad Improvements, Parking, Paving, Sidewalk, Roadways
-
- Design and Construction period: Spring 2008 – Spring 2011



Building 4N: Cosmetology, Administration and Wellness



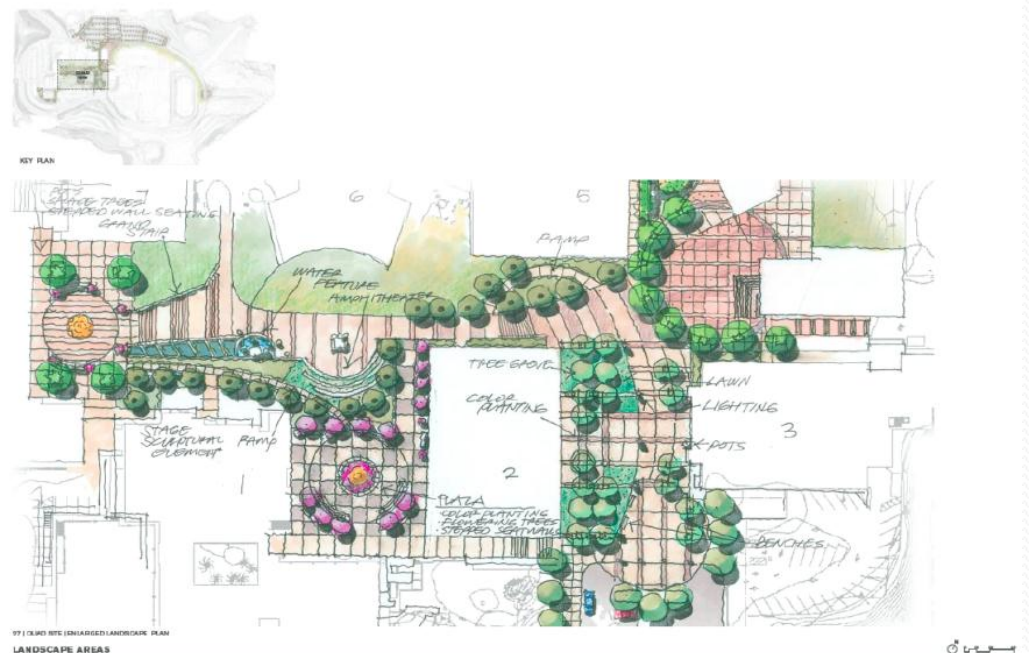
- ✓ Construction Drawings are being prepared for submittal to DSA
- ✓ Three increments will be submitted to facilitate review and construction start
 - Site (Increment 1) Submittal to DSA: September 2008
 - Groundbreaking: January 2009
 - Structure (Increment 2) Submittal to DSA: November 2008
 - Construction Start: March 2009
 - Interiors (Increment 3) Submittal to DSA: February 2009
 - Construction Start: May 2009

Building 11N: Auto Transmission

- ✓ Several options in site location and scope were analyzed for best value
- ✓ Design-build team will begin development of selected design in October 2008
- Submittal to DSA: January 2009
- Construction Start: Summer 2009

Sitework Improvements

- ✓ Campus Sitework improvements design in process
- Submittal to DSA: December 2008
- Construction Start: Summer 2009



Sitework Improvements

- ✓ 12kVA Campus Electrical Distribution System upgrade design in process
- ✓ Boiler Plant upgrade design in process
- Submittal to DSA: January 2009
- Construction Start: Summer 2009



Skyline College CIP2 Design Build Project Schedule*

ID	Task Name	Duration	Start	Finish	alf	2nd Half	1st Half	2nd Half	1st Half	2nd Half	1st Half	2nd Half	1st Half	2nd Half	1st Half	2nd Half	1st Half	2nd Half	1st Half	2nd Half	1st Half	2nd H																																
					AM	J	A	S	O	N	D	J	F	M	A	M	J	J	A	S	O	N	D	J	F	M	A	M	J	J	A	S	O	N	D	J	F	M	A	M	J	J	A	S	O	N	D	J	F	M	A	M	J	J
1																																																						
2	SKY DESIGN-BUILD PROJECT	838 days	Thu 2/7/08	Mon 4/25/11																																																		
3	Design Period	278 days	Thu 2/7/08	Mon 3/2/09																																																		
4	New B4N - Cosmetology, Administration and Wellness	278 days	Thu 2/7/08	Mon 3/2/09																																																		
5	New B11N - Auto Transmission	153 days	Thu 5/1/08	Mon 12/1/08																																																		
6	Sitework	153 days	Thu 5/1/08	Mon 12/1/08																																																		
7	Construction	546 days	Mon 3/23/09	Mon 4/25/11																																																		
8	New B4N - Cosmetology, Administration and Wellnes	480 days	Tue 6/23/09	Mon 4/25/11																																																		
9	Construction	420 days	Tue 6/23/09	Mon 1/31/11																																																		
10	Group II FF&E installation	40 days	Tue 2/1/11	Mon 3/28/11																																																		
11	Commissioning & Faculty/Student transitioning	20 days	Tue 3/29/11	Mon 4/25/11																																																		
12	New B11N - Auto Transmission	195 days	Mon 4/27/09	Fri 1/22/10																																																		
13	Construction	135 days	Mon 4/27/09	Fri 10/30/09																																																		
14	Group II FF&E installation	40 days	Mon 11/2/09	Fri 12/25/09																																																		
15	Commissioning & Faculty/Student transitioning	20 days	Mon 12/28/09	Fri 1/22/10																																																		
16	Site Improvements	365 days	Mon 3/23/09	Fri 8/13/10																																																		
17	Phase I	105 days	Mon 3/23/09	Fri 8/14/09																																																		
18	Phase 2	110 days	Mon 3/15/10	Fri 8/13/10																																																		

*Dates subject to change

Question & Answer

<http://www.smccd.edu/accounts/smccd/departments/facilities/>

Linda da Silva
Executive Director
Construction Planning
(650) 358-6726
dasilva@smccd.edu

