

SAN MATEO COUNTY  
COMMUNITY COLLEGE DISTRICT

# Capital Improvement Program Status Report

**Bond Oversight Committee**  
**February 1, 2008**



"Facilities Excellence"

# Energy Conservation Measures

## Work completed

- Installation of digital energy management control system at all campuses
- Comprehensive systems commissioning at all campuses
- Cañada College chilled water plant expansion
- Heating / Hot water variable flow pumping at all campuses
- Primary / Secondary variable-flow pumping retrofits
- Electrical distribution system repairs
- Installation of Utility Vision real-time monitoring and metering platform at all campuses
- Air handling system refurbishments at all campuses
- Underground piping repairs at all campuses
- Lighting retrofits: Lighting controls and circuit upgrades at all campuses
- Boiler repairs at all campuses
- Co-generation plants: CSM (560 KW) & Skyline College (375 KW)
- Installation of CO2 Sensors at all Gymnasias

# Cañada College

## Completed Major Projects

- Campuswide Smart Classrooms
- Building 2 Classroom Renovation
- Building 8 Administrative Offices Renovation Phase 1
- Building 13 Classroom Renovation
- Building 17 Lecture Hall Modernization
- Building 3 Modernization (Theaters, Fashion Design Program, Circulation Space)
- Building 2 Bookstore Modernization completed June 2007
- Athletic Facilities Upgrades
- New Building 9 Library & Student Resource Center opened August 2007
- Main Quad Landscaping, Butterfield Horse Installation, Amphitheater, Water Feature completed August 2007
- Buildings 16 & 18 Sciences Swing Space completed and occupied December 2007

# Cañada College Building 9 Library /Student Resource Center

Total Project Cost: \$33M; 75,917gsf; 30% more energy efficient than required by code



"Facilities Excellence"

# Cañada College Building 9 Library /Student Resource Center

Total Project Cost: \$33M; 75,917gsf; 30% more energy efficient than required by code



"Facilities Excellence"



# Cañada College Building 9 Library /Student Resource Center

Total Project Cost: \$33M; 75,917 gsf; 30% more energy efficient than required by code



"Facilities Excellence"

# Cañada College Main Quad



"Facilities Excellence"



# Cañada College Main Quad Amphitheater with Chessboard



"Facilities Excellence"



# Cañada College Main Quad Water Feature



"Facilities Excellence"

# Cañada College Projects in Construction Phase

- Utilities Chilled Water Line Infrastructure Extension (Air Conditioning!)
  - Construction to be completed February 2008
- Buildings 16/18 Science & Engineering Modernization
  - Construction Phase: January 2008-August 2008
- Building 8 Administration Phase 2 Modernization
  - Construction phase: May 2008- December 2008
- New Building 7 Facilities Maintenance Center
  - Construction phase: February 2008-December 2008
- Gateways, Circulation and Parking Project
  - Construction phase: May 2008 – May 2009
- Upper Quad Concession Stand
  - Construction Phase: March 2008-May 2008
- Buildings 5/6 Student Center/Classroom Modernization
  - Construction phase: January 2009 - March 2010



# Cañada College

## New Building 7 Facilities Maintenance Center

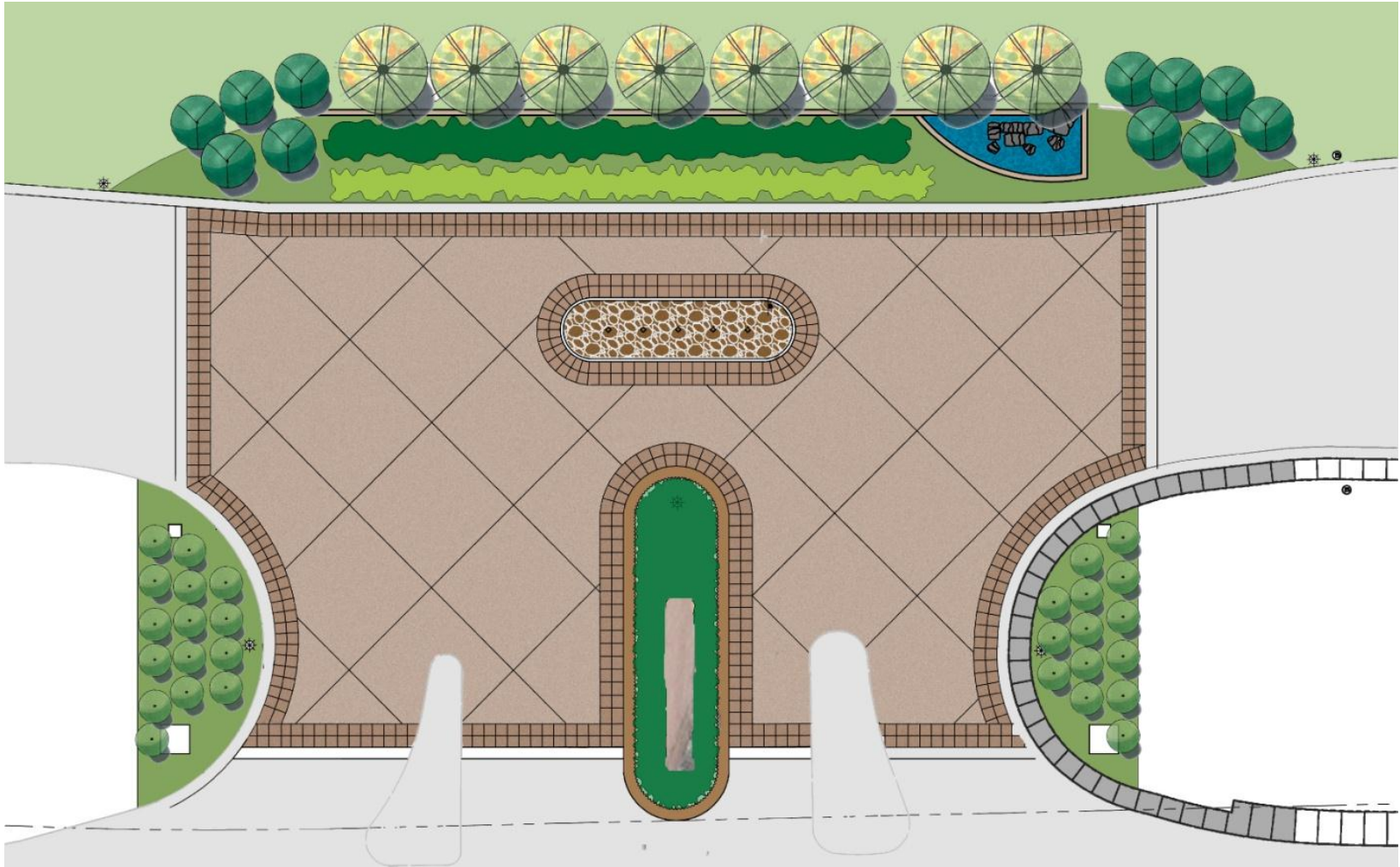
Construction phase: February 2008-December 2008



"Facilities Excellence"

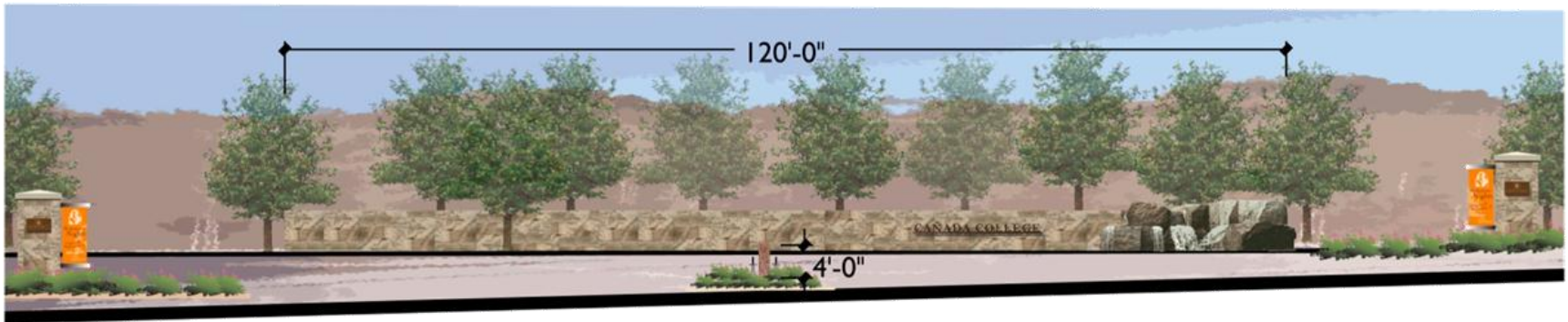


# Primary Gateway @ Farm Hill Blvd. (planned)



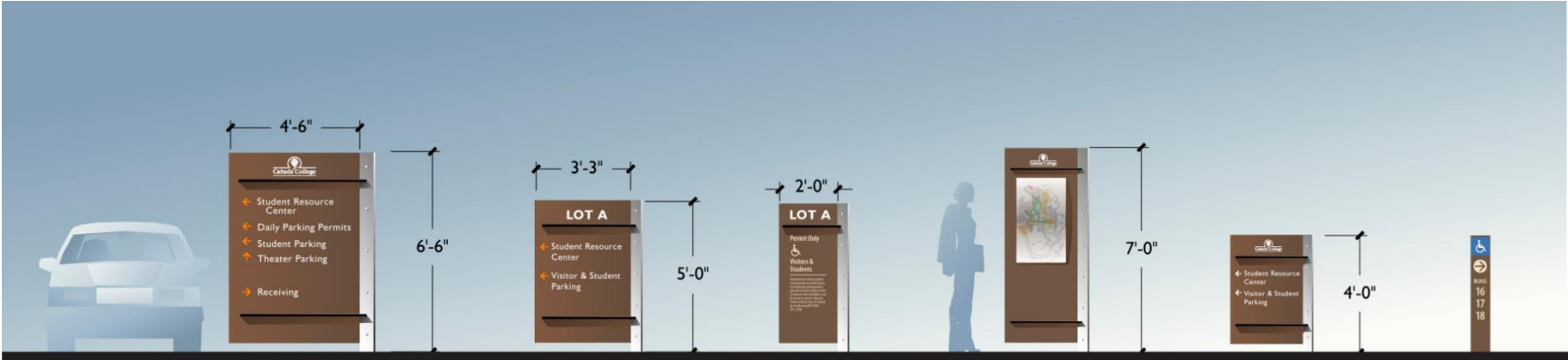
"Facilities Excellence"

# Primary Gateway @ Farm Hill Blvd. (planned)



"Facilities Excellence"

# Wayfinding Signage



PRIMARY  
VEHICULAR DIRECTIONAL  
Letter Height: 3"

SECONDARY  
VEHICULAR DIRECTIONAL

PARKING LOT ID

CAMPUS MAP DIRECTORY

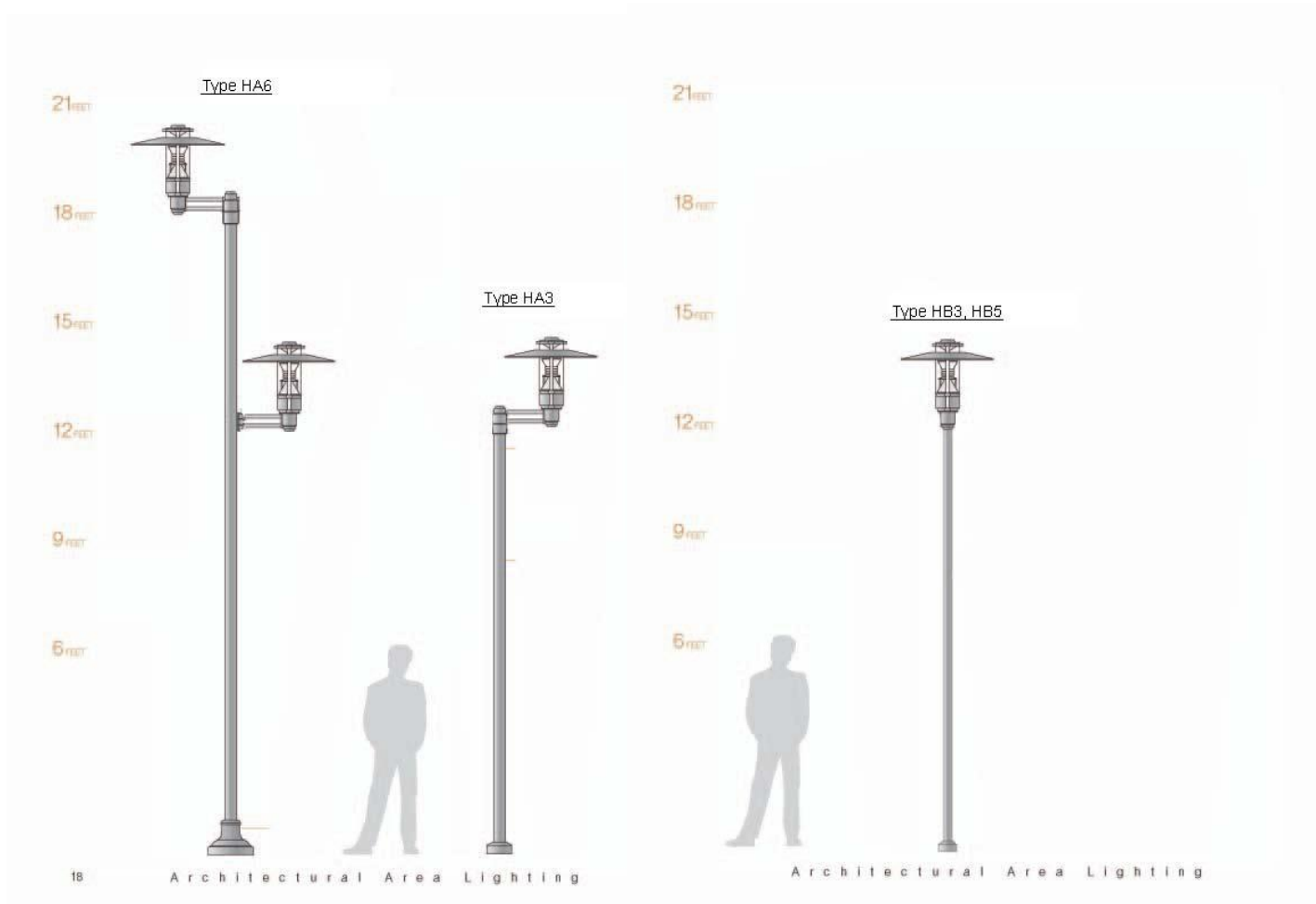
DIRECTIONAL  
TRAIL BLAZER

DIABLED ACCESS  
ON CAMPUS

**SIGN FAMILY**  
SCALE: 1/4" = 1'-0"



# Lighting Improvements



"Facilities Excellence"

# Perspective View from new Bus Stop



"Facilities Excellence"

# Cañada College Quad Concession Stand Project

Construction Phase: March 2008-May 2008



"Facilities Excellence"



# Cañada College Buildings 5/6 Student Center and Instructional Building Modernization Project

Construction phase: January 2009 - March 2010



"Facilities Excellence"

# Cañada College

## Future State Funded Projects

- **Building 13 Instructional Building Modernization** (State: \$7.7M, Non-State: \$4.1M)
  - Approved FPP, funding pending Nov. 2008 Statewide Bond
  - Pre Construction Phase: FY 08-09
  - Construction Phase: ~ February 2010-February 2011
  
- **Building 1 Gymnasium Modernization** (State: \$9.3M, Non-State: \$2.3M)
  - Approved FPP, funding pending Nov. 2008 Statewide Bond
  - Pre Construction Phase: FY 09-10
  - Construction Phase: ~ August 2010-August 2011

# College of San Mateo

## Completed Major Projects

- Building 9 KCSM Renovations
- Buildings 10, 11, 12 Conversion to Swing Space
- Building 16 Instructional Building Renovation Phase 1
- Building 18 Instructional Building Seismic Upgrade and Modernization
- Building 19 CIS Labs Renovation
- Building 33 Child Development Center Interior and Play Yard Renovations
- New Building 35 Regional Public Safety Center
- New Building 36 Science Building
- Athletic Facilities Upgrades



# College of San Mateo Building 36 Science Building

Total Project Cost: \$29M; 60,904 gsf; 42% more energy efficient than required by code



"Facilities Excellence"

# College of San Mateo Building 36 Science Building

Total Project Cost: \$29M; 60,904 gsf; 42% more energy efficient than required by code



"Facilities Excellence"



# College of San Mateo Building 36 Science Building

Total Project Cost: \$29M; 60,904 gsf; 42% more energy efficient than required by code



"Facilities Excellence"

# College of San Mateo Walter H. Moore Regional Public Safety Center



"Facilities Excellence"



# CSM Projects in Pre-Construction Phase

- Building 16 Classroom Modernization Phase 2
  - New Elevator, Modernization of Restrooms and Common Areas
  - Construction Period: Spring 2008 – December 2008
- Buildings 2/4 Fine Arts Complex Modernization
  - Construction Period: Spring 2008 – December 2008
- Building 14 Classroom Modernization Phase 2
  - Construction Period: Spring 2008 – December 2008
- Building 9 Restrooms Modernization
  - Construction Period: a couple of months between Spring 2008 – December 2008

# CSM Projects in Pre-Construction Phase

- Demolition of Buildings 21-29 (State Funded Project)
  - Increment 1—Electrical Load Center 4 Replacement
    - Winter 2008
  - Increment 2—Demolition of Buildings 21-27 & 29
    - Winter 2010
- Buildings 20 & 20A
  - Design and Construction Period: Winter 2010-Spring 2012
- New buildings & Sitework of CIP2 Design-Build Project
  - ✓ New Building 10N
  - ✓ New Building 5N
  - ✓ Demolition of Buildings 5, 6, 10, 11, 13, T1 and Kiosko
  - Design and Construction Period: Winter 2008 – Summer 2011

# CSM Coastside at Shoreline Station Half Moon Bay



"Facilities Excellence"

# CSM Building 16 Phase 3



"Facilities Excellence"

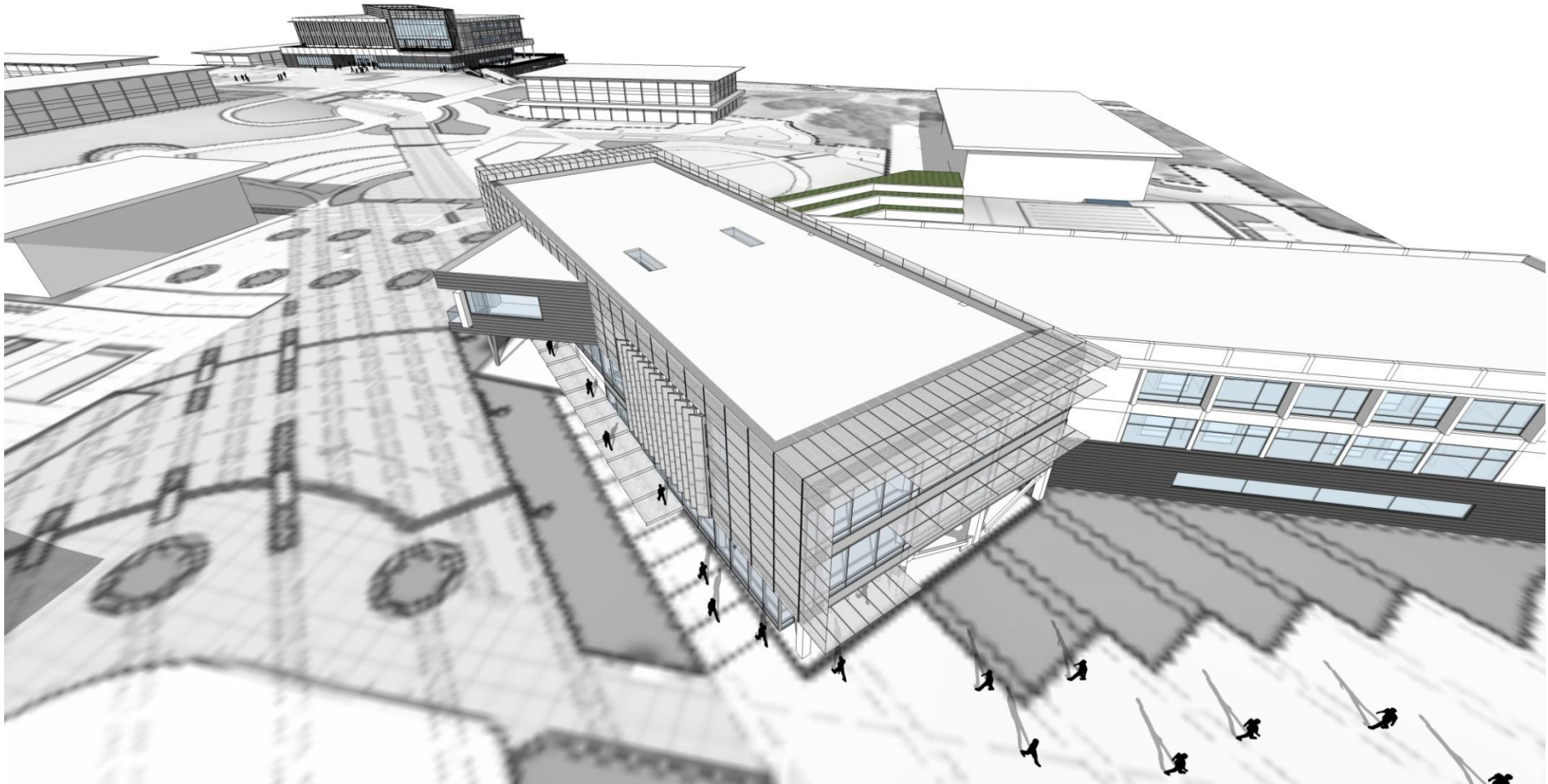


# College of San Mateo CIP2 Design Build Project



"Facilities Excellence"

# College of San Mateo CIP2 Design Build Project



"Facilities Excellence"





# College of San Mateo CIP2 Design Build Project



"Facilities Excellence"

# CSM Future State Funded Projects

- CSM Building 12 Renovation (State: \$5.7M, Non-State: \$1.7M)
  - Approved FPP, funding pending Nov. 2008 Statewide Bond )
  - Pre Construction Phase: FY 08-09
  - Construction Phase: ~ April 2010-April 2011
- CSM Building 19 Emerging Technologies Center (State: \$14.7M, Non-State: \$6.0M)
  - Approved FPP, funding pending Nov. 2008 Statewide Bond
  - Pre Construction Phase: FY 09-10
  - Construction Phase: ~ April 2011-April 2012
- CSM Building 1 Administration (State: \$4.8M, Non-State: \$1.6M)
  - FY 10/11 FPP to be submitted
- CSM Buildings 15 & 17 Modernization (State: \$4.7M, Non-State: \$1.7M)
  - FY 10/11 FPP to be submitted
- CSM Building 8 Gym ADA & Title 9 Upgrades (State: \$11.5, Non-State: \$3.4M)
  - FY 10/11 FPP to be submitted



# Skyline College

## Completed Major Projects

- Building 1 Fine Arts Complex Renovation Phase 1
- Building 2 Center for Advanced Learning Technologies
- Building 2 Student Services One Stop Shop
- Building 3 Gymnasium Seismic Upgrade and Modernization
- New Building 6 Student & Community Center
- New Building 7A Science Annex
- Building 8 Language Arts Seismic Upgrade and Modernization
- Buildings 9 & 10 Automotive Technology Renovations
- Pacific Heights Complex Conversion to Swing Space
- Loma Chica Conversion to Swing Space
- Athletic Facilities Upgrades

# Skyline College Building 6 Student & Community Center

Total Project Cost: \$18.4M; 38,828 gsf; 28% more energy efficient than required by code



"Facilities Excellence"

# Skyline College Building 7A Science Annex

Total Project Cost: \$13.8M; 28,975 gsf; 28% more energy efficient than required by code



"Facilities Excellence"

# Skyline College Projects in Construction Phase

- Building 7 Allied Health/Vocational Technology and Training Center Modernization begins
  - Construction Phase: Fall 2007-Fall 2008
- Buildings 22, 23 & 24 Replacement Facilities Maintenance Center
  - Construction Phase: January 2008-September 2008



# Skyline College

## New Facilities Maintenance Center

Construction Phase: January 2008-September 2008



"Facilities Excellence"

# Skyline College

## Projects in Pre-Construction Phase

- Building 1, Phases 2&3 Fine Arts Complex Modernization
  - Pre-Construction Phase: ~ Winter-Fall 2008
- Building 5
  - Pre-Construction Phase: ~ Winter 2008-Fall 2008
  - Construction Phase: ~ Winter 2010-Summer 2010

# Skyline College

## Projects in Pre-Construction Phase

- Buildings & Sitework of Design-Build Project
  - ✓ Gateways & Quad Construction
  - ✓ New Building 11 Auto Transmission
  - ✓ New Building 4 Cosmetology, Administration and Wellness
  - ✓ Parking, Paving, Sidewalk, Roadway Upgrade work
    - Design and Construction period: Winter 2008 – Spring 2011

# Skyline College CIP2 Design Build Project



"Facilities Excellence"



# Skyline College Future State Funded Projects

- SKY Building 2 Modernization Phase 3 (State: \$7.7M, Non-State: \$2.6M)
  - Approved FPP, funding pending Nov. 2008 Statewide Bond
  - Pre Construction Phase: FY 08-09
  - Construction Phase: ~ Winter 2009–Winter 2010
- SKY Building 1 Modernization Phase 4: Theatre Renovation (State: \$6.2M, Non-State: \$4.2M)
  - Approved FPP, funding pending Nov. 2008 Statewide Bond
  - Pre Construction Phase: FY 09-10
  - Construction Phase: ~ April 2011-April 2012

# Question & Answer

[www.smccd.edu/facilities](http://www.smccd.edu/facilities)

José D. Nuñez  
Vice Chancellor  
Facilities, Maintenance & Operations  
(650) 574-6512  
[nunezj@smccd.edu](mailto:nunezj@smccd.edu)