



# Facilities Planning & Operations 7<sup>th</sup> Annual General Session July 13, 2007



"Facilities Excellence"



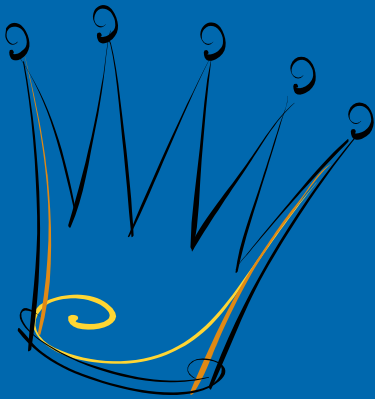
# Agenda

- FPO Department
- CIP
- M&O



"Facilities Excellence"

# Guests



- Ron Galatolo
- Jim Keller
- Harry Joel
- Marilyn McBride
- Linda Da Silva
- Leigh Sata
- Anne Daley
- Scott Adams
- Felix Huerta
- Devitt Hartney
- Alan Miller
- Cristina Cruz
- Larisa Howes
- Kanjana Srisupatopongsa



"Facilities Excellence"

# Retirees



"Facilities Excellence"

# New Staff



- Jose Brambila – CSM Custodian
- Darné Duckett – CSM Custodian
- Alex Gordon – CSM Custodian
- Carina Hass – FPO Staff Assistant
- Daniel Hernandez – Cañada Custodian
- Wendy Huang – CSM Custodian
- Karen Lam – CSM Custodian
- Rom Langi – CSM Utility Engineer
- Juan Lopez – CSM Maintenance Engineer
- Luis Martinez – CSM Maintenance Engineer
- Seini Mateialona – Skyline Staff Assistant
- Dave McCargar – Skyline Groundskeeper
- Adrian Otis – CSM Utility Engineer
- Helen Wong – CSM Custodian
- Rosendo Zamora – Cañada Custodian
- Devitt Hartney – Project Engineer (CPD)

# Short-Term Employees

- Adisorn Chayapuek
- Jesus Ceja
- Jin Xia Huang
- Ke Tao Liu
- Rosa Vargas
- Erick Aparicio
- Rama King



"Facilities Excellence"

# Service Awards

- **10 Years**

- James Louie

- **20 Years**

- Francisco Carlos
- Buu Khuu
- Huong Nguyen

- **25 Years**

- Lupe Mendoza



"Facilities Excellence"

# Mission Statement

**Ensure a safe, effective, and inspiring physical environment that supports and enhances the instructional mission of the San Mateo County Community College District**



"Facilities Excellence"



# Teamwork

**team-work**

Pronunciation: 'tEm-"work

Function: *noun*

Date: circa 1828

work done by a group of people with each doing a part but all working collaboratively towards a common goal



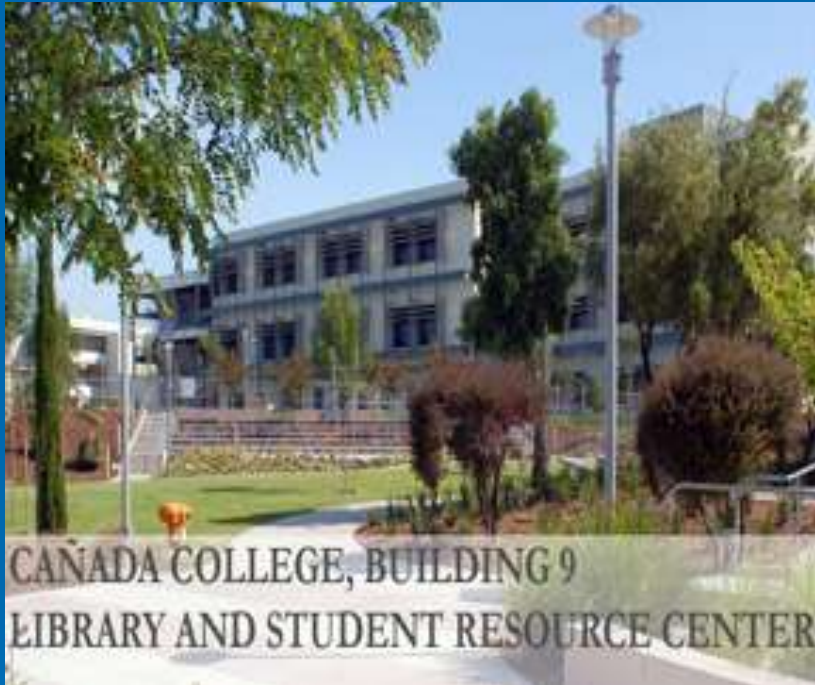
"Facilities Excellence"

# Capital Improvement Program (CIP)



"Facilities Excellence"

# B9 – Library and Student Resource Center



# B36 - Science Center





# B6 - Student Union & B7A - Science Annex



"Facilities Excellence"



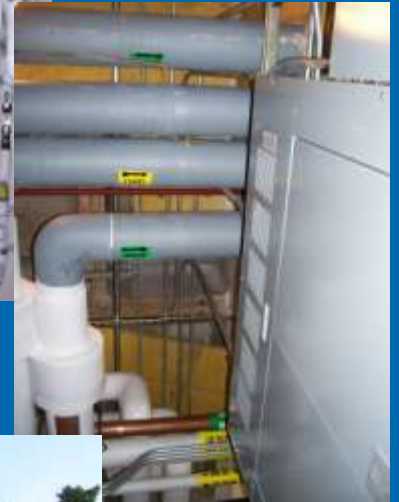
# CIP Photo Montage



"Facilities Excellence"



# CIP Photo Montage



"Facilities Excellence"

# CIP2

- 2005 Measure A - \$468M
- Updated Master Plan



"Facilities Excellence"



# Cañada College: Facilities Master Plan



Figure 2.07

"Facilities Excellence"

# College of San Mateo: Facilities Master Plan

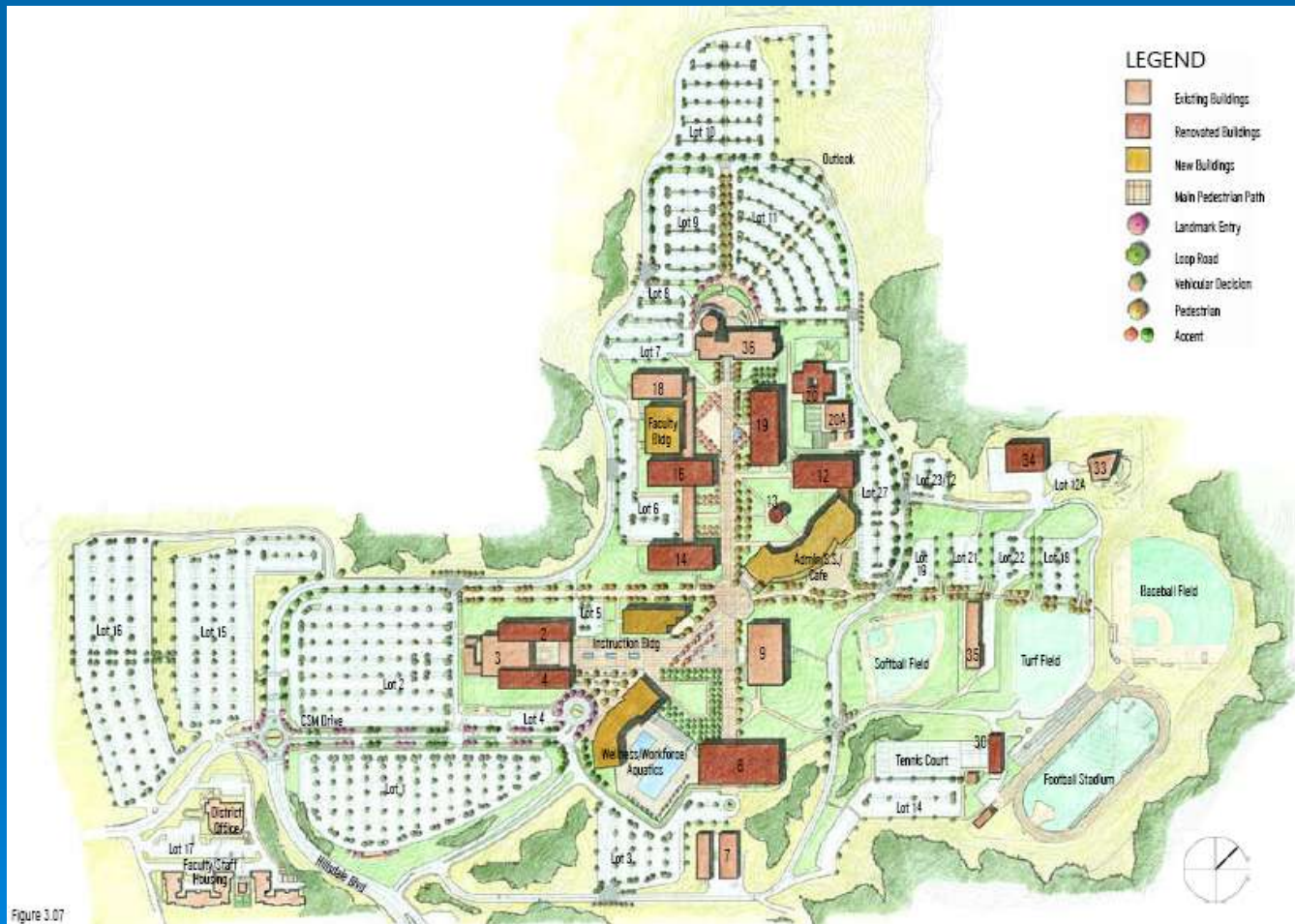


Figure 3.07

"Facilities Excellence"



# Skyline College: Facilities Master Plan



Figure 4.07

"Facilities Excellence"

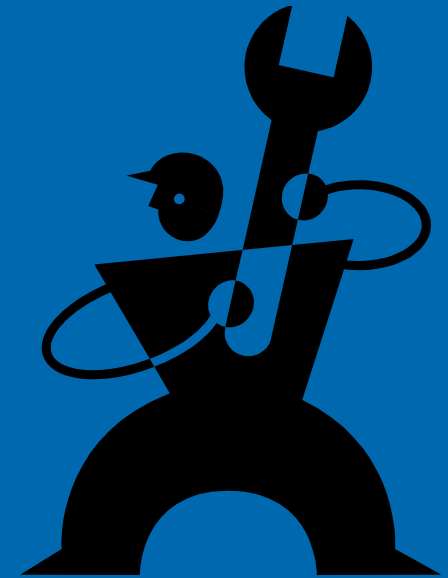
# CIP2: What does that mean to me?

- More utility shutdowns – planned & unplanned
- More construction traffic
- More dirt, dust, noise
- More controlled chaos
- More disruption to the educational mission



# Major M&O Initiatives

- **FEQN – did I miss something?**
- **Facilities Safety Task Force**
- **Staffing**
  - more positions
  - Still not enough
- **Budget – a bit more**
- **\$alary increases**
- **Facilities HelpCenter**
- **Unsung Heroes**



# Mantra

**Professionalism**  
**Team Work**  
**Customer Service**  
**Communication**



**Facilities**  
**Excellence**



"Facilities Excellence"

