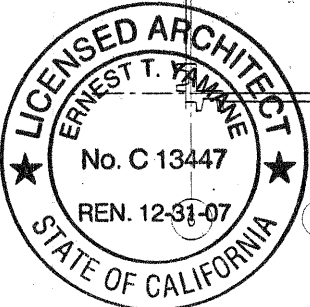
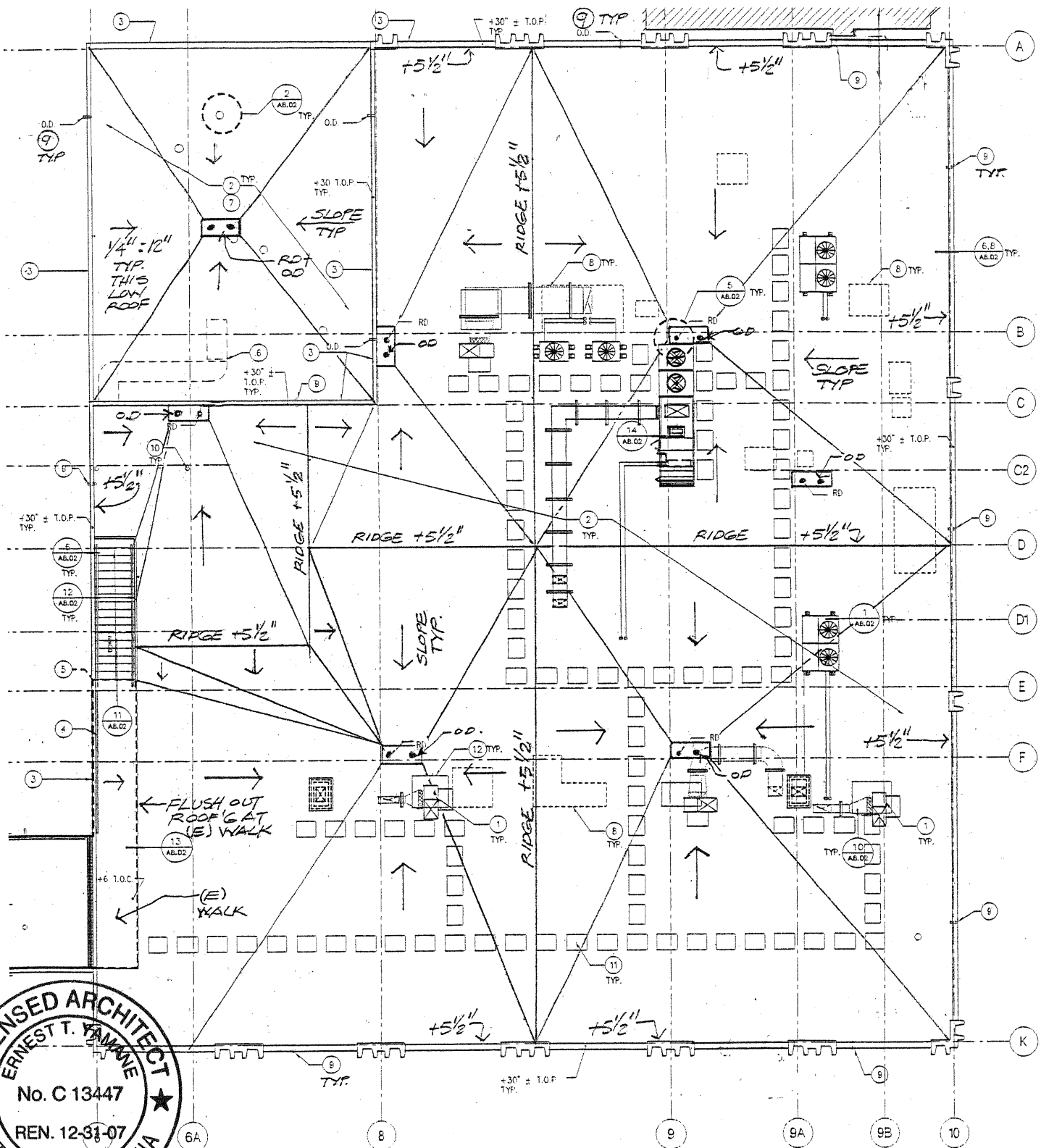


Copyright 2005 Steinberg Architects All Rights Reserved - These Plans and/or Specifications are intended for the sole benefit of Steinberg Architects's client and may not be used, reused, copied, or reproduced in any form without the express written consent of Steinberg Architects.



1 ROOF PLAN

- SEE ADS-SI FOR PENETRATION REQUIREMENTS
- SEE ADS-PSK01, ADS-PSK02, ADS-PSK03 FOR D.I.D. PIPING

rev.	date	issue
ADD5	5-25-07	

architect  
Steinberg Architects  
60 Pierce Avenue  
San Jose CA 95110

**SKYLINE COLLEGE  
MODERNIZATION OF BUILDING 7**  
3300 College Drive, San Bruno CA  
DSA File No. 41-C11/App. No. 01-108385

San Mateo Community College District  
3401 CSM Drive  
San Mateo CA

**STEINBERG ARCHITECTS**

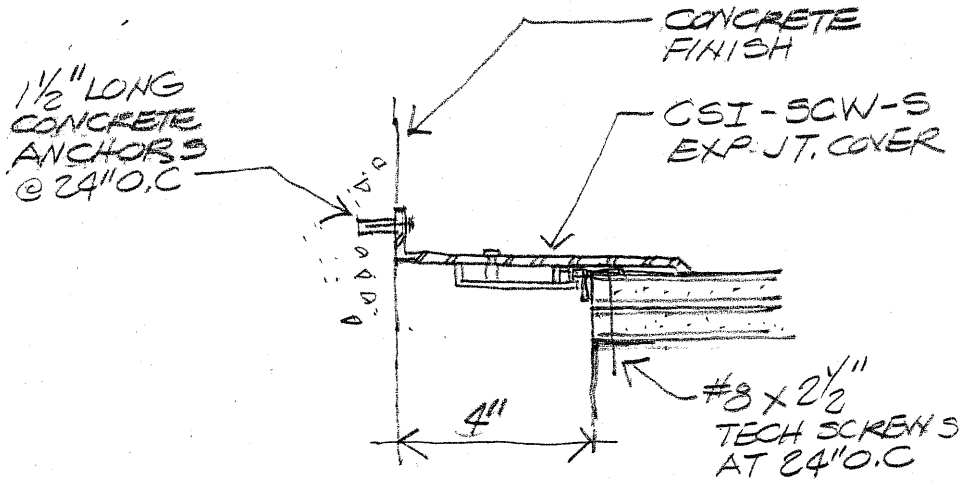
project no: 06015 date: 5-25-07  
drawn by: RS checked by:  
scale: - ref: A2.04

DETAIL 1  
ROOF PLAN  
AD5-A1

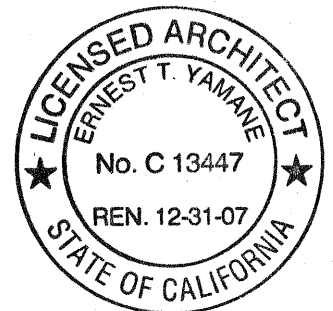




Copyright 2005 Steinberg Architects All Rights Reserved - These Plans and/or Specifications are intended for the sole benefit of Steinberg Architect's client and may not be used, reused, copied, or reproduced in any form without the express written consent of Steinberg Architects.



② SEISMIC JOINT COVER AT WALL TRANSITION



STEINBERG ARCHITECTS

project no: 06015 date: 5-25-07  
 drawn by: RS checked by:  
 scale: - ref: A8.01

SEISMIC JOINT  
 WALL TRANSITION

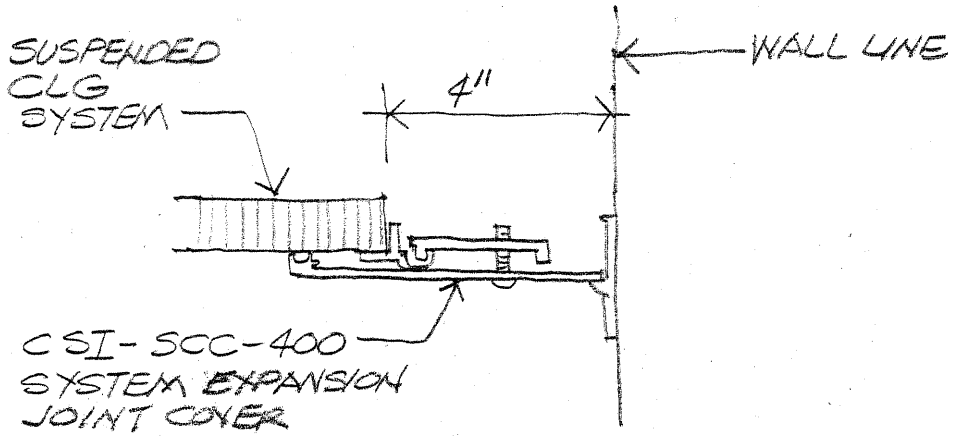
AD5-A4

rev.	date	ISSUE
ADD 5	5-25-07	

architect Steinberg Architects  
 60 Pierce Avenue  
 San Jose CA 95110

SKYLINE COLLEGE  
 MODERNIZATION OF BUILDING 7  
 3300 College Drive, San Bruno CA  
 DSA File No. 41-C1/App. No. 01-108385

San Mateo Community College District  
 3401 CSM Drive  
 San Mateo CA



3

SEISMIC JOINT COVER AT CEILING TRANSITION



STEINBERGARCHITECTS

rev.	date	ISSUE
ADD5	5.25-07	

architect

Steinberg Architects  
60 Pierce Avenue  
San Jose CA 95110

SKYLINE COLLEGE  
MODERNIZATION OF BUILDING 7

3300 College Drive, San Bruno CA  
DSA File No. 41-C1/App. No. 01-108385

San Mateo Community College District  
3401 CSM Drive  
San Mateo CA

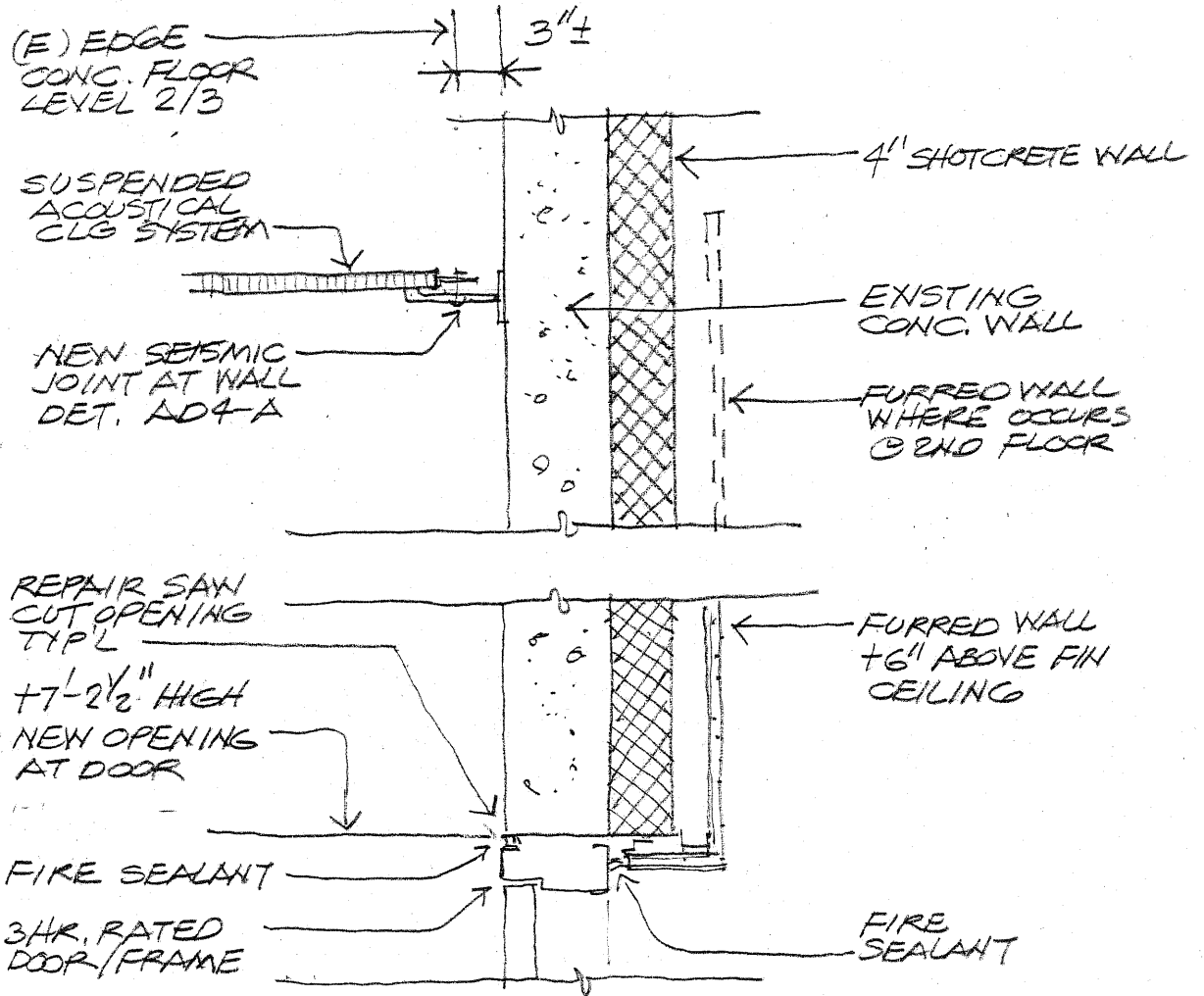
project no: 06015 date: 5-25-07

drawn by: RS checked by:

scale: - ref: A8.01

SEISMIC JOINT  
CEILING TRANSITION

A05-A5



9 2ND & 3RD FLOOR OPENING-HEAD DETAIL



STEINBERGARCHITECTS

rev.	date	issue
ADD 5	5-25-07	

architect  
Steinberg Architects  
60 Pierce Avenue  
San Jose CA 95110

**SKYLINE COLLEGE  
MODERNIZATION OF BUILDING 7**  
3300 College Drive, San Bruno CA  
DSA File No. 41-C1/App'l. No. 01-108385

San Mateo Community College District  
3401 CSM Drive  
San Mateo CA

project no: 06015 date: 5-25-07  
drawn by: RS checked by:  
scale: 1/2"=1'-0" ref: AB.01

DOOR OPENING  
HEAD DETAIL  
2ND/3RD FLR  
AD5-A6







