

# STEINBERG ARCHITECTS

In association with Noll & Tam Architects

## 2006 Facilities Master Plan Update Cañada College

San Mateo County Community College District



March 29, 2006

## Agenda

1. Status
2. Refined Vision and Goals
3. Analysis
4. Master Plan Considerations

# Definition and Process

A Facilities Master Plan is a document that describes an overall physical development concept through maps and narrative.

The Master Plan documentation reflects a strategy to provide the facilities that support your college Mission Statement. The plan is guided by a vision statement and defined goals.

## Process:

- Physical and Academic review and analysis
- Options development
- Solution development
- Facilities Master Plan approval



# 2006 Facilities Master Plan – Guiding Principles

These principles shall be considered in the implementation of each strategy

- Student Focused
- Sustainability
- Fiscal Responsibility
- Safety
- Security
- Asset Preservation
- Sense of Community
- Flexibility
- State-of-the-art
- Associated Weather Protection
- Associated Landscaping
- Accessibility – ADA Requirements
- Human Interaction

# 2001 Facilities Master Plan – District Goals

- Improve facilities to support the educational mission of the institution.
- Improve the image of each College.
- Create a welcoming identifiable entrance to each campus.
- Consolidate and expand student services.
- Locate footprints for future planned facilities.
- Create more unprogrammed space for students.  
(activity areas – indoor and outdoor)
- Consider opportunities to improve campus/community relations.

# Cañada College 2006 Facilities Master Plan - Information Log

- Students
- Faculty And Staff
- Community
- Pedestrian and Vehicular Circulation
- Campus Environment

General Item	INFO/ISSUES / DEFICIENCIES GENERAL
Philosophy	True student orientation Prepare people to think, not just to work
Student Population	6,152 Students. Efforts to increase enrollment
Student Profile	40% Latino Students. Past Administration emphasis on underprivileged students
Staff	People devoted to the campus. Good interaction, care and help Concerns about transition of Presidency and Canada not getting enough money vs. other 2 Colleges
Space Inventory	125% built. 25% above State Standards District Wide Am (8:00am to 12:00) Fill most classes Early AM (8:00 to 9:00) Not full capacity
Room Utilization	Afternoon (12:00 to 6:00) Not full capacity Evening Classes (6:00 to 9:30) Not full capacity. Small program Information Boards strategic points
Image and Signage	Electronic Boards
Pedestrian and Vehicular Circulation	Improve stairs from Parking Lot 6 to PE (Building 1) safety issue. Inquire about Sky bridge Need sidewalk around campus Increase staff and faculty parking Solar energy for lighting Extend light schedule and adjust to season Outstanding safety concerns due to insufficient lightning. Improve lightning campus wide (e.g. parking lot 8) Improve exterior lighting. Recent improvements NOT enough Frisbee Lawn highly used Preserve beautiful setting and Topiary Hot weather. Open spaces need shading areas Need of Open Spaces different scales for students to meet Need Back road Landscape and signage (neighbors remove signage). Improve general off-campus signage Storage for outdoor events equipment (barbecue, etc) Paid phones thru campus Outdoor studio for painting. Rocking chairs New sculpture garden. Approve "Art on Campus" project Back road space to be used as event space or outdoor classrooms Uneven planting. No straight lines
Open Space & Landscape	Flexible, adaptable, changeable, state-of-the-art-facilities that stay current many years Need scattered computer labs for faculty Lack of meeting spaces. Various sizes and sources, from interviewing to regular meetings Additional Meeting spaces for 15+, 30+ Need Multi purpose room Room furniture preferred tables on classrooms rather than chair desks Additional Faculty offices and lounge space Additional Faculty lounge and Work Areas Storage rooms inaccessible when rooms occupied (not right location) Additional Storage space throughout campus Plan growth Space for University center Research trends on room utilization layouts per type of room Classroom schedule is busy, doesn't allow usage as meeting space Evaluate need of additional computers vs. more efficient usage of computer rooms Plan flexible space for future workforce development program on Health Care arena Visible security offices
Space utilization	Science and Technology: Health Care preparation programs. Full enrollment. Recent incensement of space 200%-300% for Microbiology, Anatomy and Physiology Engineering, Physics, Organic Chemistry and Biology. Full enrollment Humanities: ESL, huge explosion 4 years ago. Currently enrollment is leveled after peak. Foresee stable to decrease in enrollment. College hasn't moved ESL students to other programs Goal to rebirth Music program that was dismantled. New Music teacher. Band and Choral rooms are being used as large rooms. Business Workforce and Development: Fashion Design Thriving. Remodeled and increased space recently. Desire degree on accounting program may require accounting lab Desire Multimedia 3D animation program, project introduced to state. Will require state-of-the-art multimedia lab University Center: Huge asset to the College. Requires permanent home
Growing Programs	Power all over campus College is committed to provide state-of-the-art-technology throughout the campus. Existing Wireless Internet connection Every room "Smart" Room. Use technology. Wireless not accessible from all rooms
Utilities and Technology	
Building Related Item	INFO/ISSUES / DEFICIENCIES PER BUILDING
	Phys. Service need new offices. Health center to be moved to Building 5 Explore new swimming pool MOP facilities will be relocated out of PE building. Space will be available for improvements PE programs Currently 5 athletic sports: Men's Baseball, Basketball and soccer (future Golf), Women's Soccer and Volleyball (future Golf)

Building 1. Fitness Center	Need women's team room and coach's facilities Women's locker room needs to be revamped (Title 9 Issues) Redo men's and women's locker room/retail showers Needs ADA compliant bleachers Needs new sound system and redo of floors for both gymnasium and dance studios Update 1-101 smart classroom for presentation and lecture based courses Need outdoor work out space for rock climbing, pull up bars, overhangs, etc Existing blueprints for fitness center remodelization. Paid Pro-Bono. Share with faculty and staff Revisit Bookstore
Building 2. Bookstore	Large room 60+ (Below Bookstore, access level same as cafeteria) Should be used more efficiently Goal rebirth Music program that was dismantled. New Music teacher. Band and Choral rooms are being used as large rooms. Drama teacher will retire. Concerns How to maintain theater/ for how long
Building 3. Theater	Art studios recently moved due to relocation of fashion design. Space needs for basic art work (mostly painting). Resentments between art and fashion design. Dance few classes, no full time teacher Plan space that will support future Drama and Music Programs Cafeteria needs upgrade. Lighting and openness Issue loading dock Relocate Health Center close to Psychological services. College have to come with a real plan for building 5 and 6. FPP Noll & Tam
Building 5. Student Center (Current)	Revisit restrooms
Building 6. Library	Videoage Studio to be used College wide Low level will be vacant after move of admin to Building 9. Idea of lower level to students when vacant
Building 8. Administration	Revisit restrooms Space for Student Union, Student Lounge. Space for doing Homework in group. Meeting Spaces to hang out. Couch on Student Lounge New students activities center close to Quad. Do not isolate Differentiate space to study from space to hang out Need of evening space for evening Students or students who stay late. Evening access to food Coffee kiosk building 9 or Quad Inviting and available space to eat buy of bring from home Space for Club meetings, storage, graphics center/ copy center (flyers and Cantina for faculty and staff)
Building 9. Student Service & Student Center (New)	New elevator Installation of new Transformer Need new AC units 13-210, 13-211, 13-213, 13-214, 13-215 and 13-217 Need replacement of Ac unit on 13-211 Electrical needs on 13-214 (computer room) few outlets, some in the floor
Building 13	Renovation of 13-210 to accommodate new high end Multimedia classroom. Major upgrades and new UPS for renderings Revisit restrooms New built in projector and Av Screen on 13-211
Building 16, 17 and 18. Science	Upgrade electrical infrastructure in preparation of multimedia programs requirements Additional storage space Biology Labs wireless and equipped with Computers. Study efficient configuration for lab and lecture Plan space for new Biology Lab, capacity 30+ students pedagogic configuration Modernization will decrease capacity of large rooms (furniture fixed vs. loose)
Building 19, 20, 21. Swinerton's Trailer	Portables have been used as swing Space during remodeling and for the University Center. Large classroom that fits 60+ students Expect portables to stay due to the need of large classrooms 60+ Utilization of Building 22 to be determined (Back to CDC or other program) CDC faculty aware of duty of district to report building as CDC facility. Inquiring about period when it HAVE to be converted back to what it was designed for. Staff well informed of district's duty to report to state.
Building 22. University Center	Bring back child development center (Ed. Opportunity and service to community). Child development center prototype for San Mateo County Need to integrate/blend offices & classrooms UC integrated rest of buildings Currently ECE space to teach but not space for childcare center Nursing. Partnership Sequoia+SFS Swing Space until all construction is finished

# Cañada Vision

Cañada College ensures success through personalized, flexible, and innovative instruction **and services.**

Cañada responds to the changing needs of the people it serves by being involved in and responsive to the community, developing new programs and partnerships and incorporating new technologies and methodologies into its programs and services

# Cañada College 2006 Facilities Master Plan - GOALS

## Students

- Provide spaces that accommodate a diversity of academic, social and community **uses both indoors and outdoors**

## Faculty & Staff

- Provide an atmosphere that fosters and supports interaction **among faculty, staff and students**

## Community

- Promote a stimulating environment that enhances community participation

## Pedestrian/Vehicular Circulation

- **Manage the interface between pedestrians and vehicles**

## Campus Environment

- Provide buildings that **accommodate college enrollment and operational needs**



# Cañada College 2006 Facilities Master Plan - GOALS

## Students

- Provide spaces that accommodate a diversity of academic, social and community uses both indoors and outdoors

## Faculty & Staff

- Provide an atmosphere that fosters and supports interaction among faculty, staff and students

## Community

- Promote a stimulating environment that enhances community participation

## Pedestrian/Vehicular Circulation

- Manage the interface between pedestrians and vehicles

## Campus Environment

- Provide buildings that accommodate college enrollment and operational needs

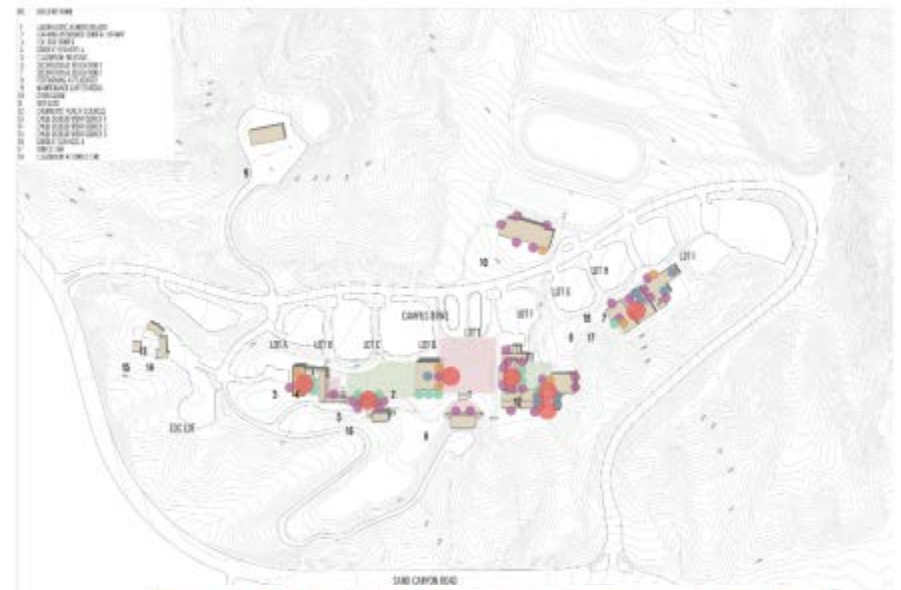
# Master Planning Principles

## EXTERIOR SPACES



SIMNL - COLLEGE CENTER COURT

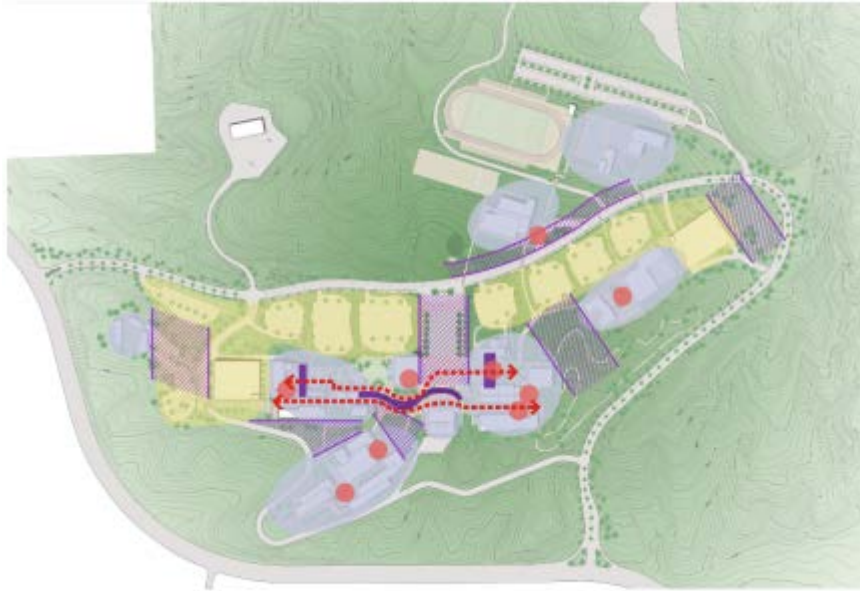
## HOT SPOTS



DINING HALL AT COLLEGE CENTER

# Master Planning Principles

## FRAMEWORK



© 2010 Noll & Tam Architects  
All rights reserved. No part of this document may be reproduced without written permission.

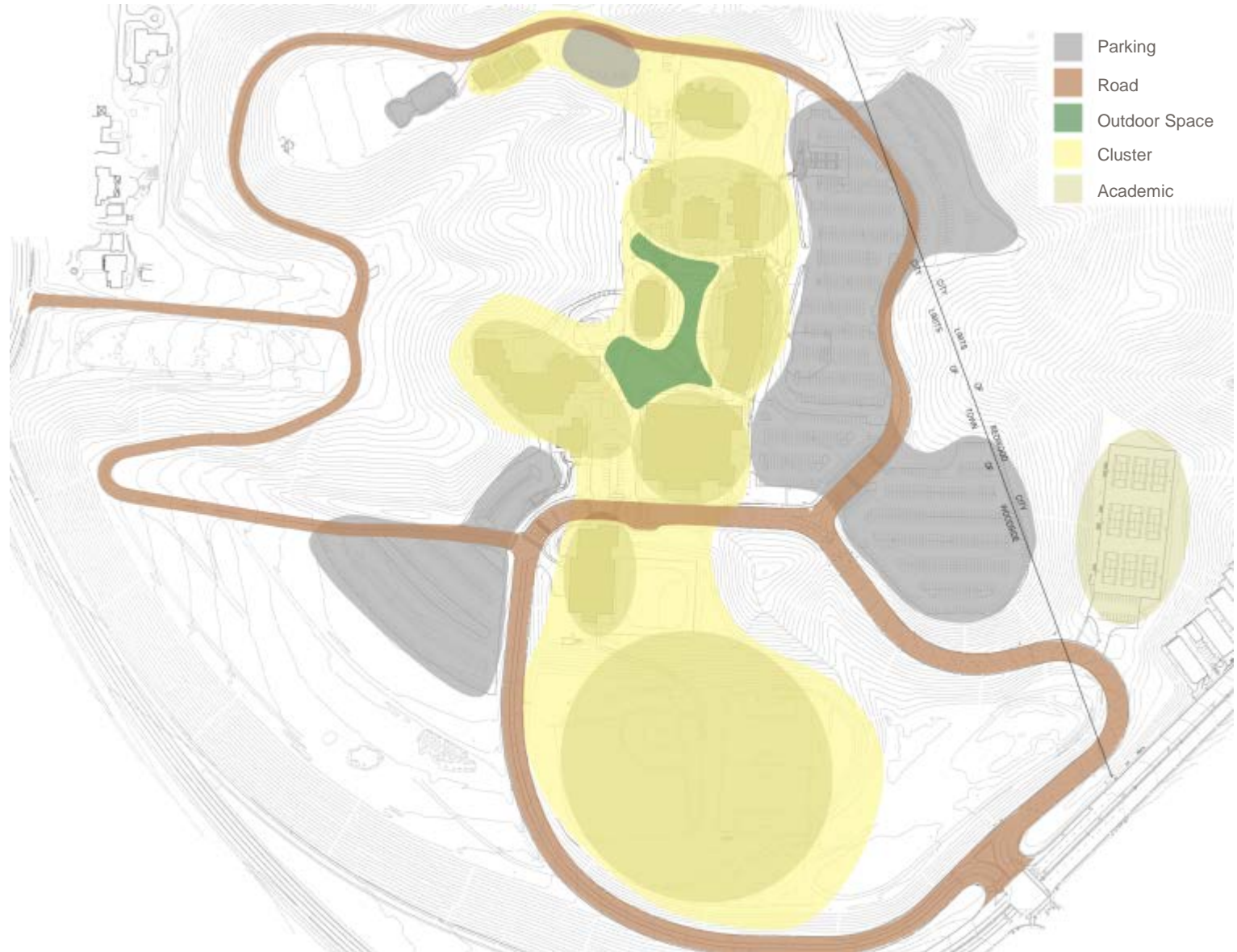
## CIRCULATION



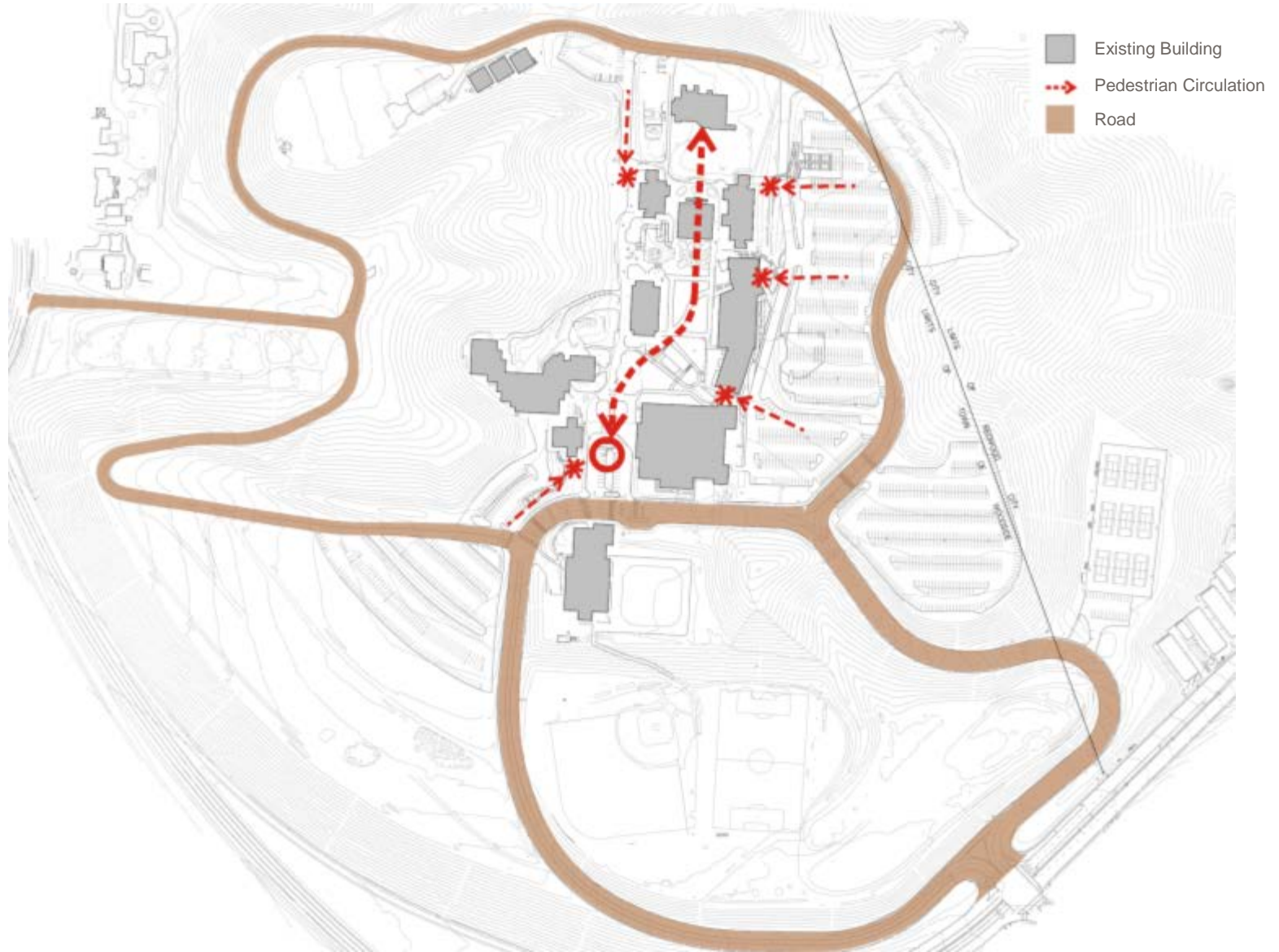
© 2010 Noll & Tam Architects  
All rights reserved. No part of this document may be reproduced without written permission.

- LEGEND**
- VEHICULAR
  - SERVICE
  - PEDESTRIAN
  - ACCESS FROM PARKING
  - CAMPUS ENTRY
  - MAIN ARRIVAL POINT

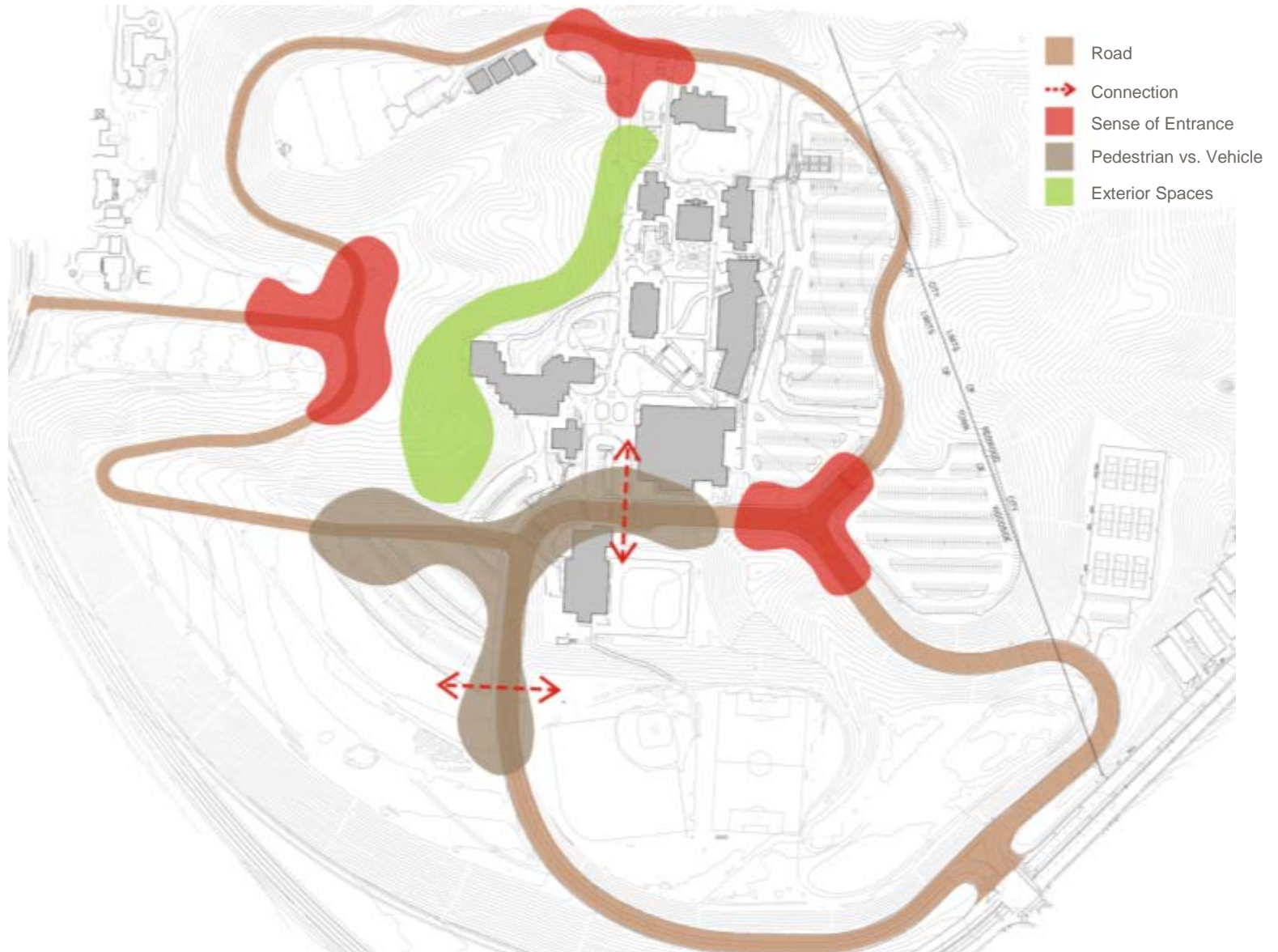
# Cañada College Existing Campus – CLUSTERS



# Cañada College Existing Campus - CIRCULATION



# Cañada College Existing Campus - ISSUES



# Cañada College Existing Campus – MASTER PLAN CONSIDERATIONS

