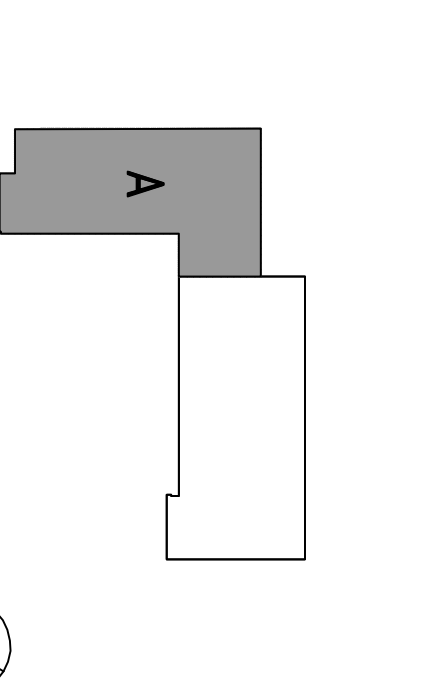


NO.	ISSUE/REVISIONS	DATE
1	100% SCHEMATIC DESIGN	04/20/09
2	50% DESIGN DEVELOPMENT	06/12/09
3	20% DESIGN DEVELOPMENT	07/29/09
4	100% DESIGN DEVELOPMENT	07/29/09
5	100% DESIGN DEVELOPMENT	07/29/09
6	100% DESIGN DEVELOPMENT	07/29/09
7	100% DESIGN DEVELOPMENT	07/29/09
8	100% DESIGN DEVELOPMENT	07/29/09
9	100% DESIGN DEVELOPMENT	07/29/09
10	100% DESIGN DEVELOPMENT	07/29/09
11	100% DESIGN DEVELOPMENT	07/29/09
12	100% DESIGN DEVELOPMENT	07/29/09
13	100% DESIGN DEVELOPMENT	07/29/09
14	100% DESIGN DEVELOPMENT	07/29/09
15	100% DESIGN DEVELOPMENT	07/29/09
16	100% DESIGN DEVELOPMENT	07/29/09
17	100% DESIGN DEVELOPMENT	07/29/09
18	100% DESIGN DEVELOPMENT	07/29/09
19	100% DESIGN DEVELOPMENT	07/29/09
20	100% DESIGN DEVELOPMENT	07/29/09
21	100% DESIGN DEVELOPMENT	07/29/09
22	100% DESIGN DEVELOPMENT	07/29/09
23	100% DESIGN DEVELOPMENT	07/29/09
24	100% DESIGN DEVELOPMENT	07/29/09
25	100% DESIGN DEVELOPMENT	07/29/09
26	100% DESIGN DEVELOPMENT	07/29/09
27	100% DESIGN DEVELOPMENT	07/29/09
28	100% DESIGN DEVELOPMENT	07/29/09
29	100% DESIGN DEVELOPMENT	07/29/09
30	100% DESIGN DEVELOPMENT	07/29/09
31	100% DESIGN DEVELOPMENT	07/29/09
32	100% DESIGN DEVELOPMENT	07/29/09
33	100% DESIGN DEVELOPMENT	07/29/09
34	100% DESIGN DEVELOPMENT	07/29/09
35	100% DESIGN DEVELOPMENT	07/29/09
36	100% DESIGN DEVELOPMENT	07/29/09
37	100% DESIGN DEVELOPMENT	07/29/09
38	100% DESIGN DEVELOPMENT	07/29/09
39	100% DESIGN DEVELOPMENT	07/29/09
40	100% DESIGN DEVELOPMENT	07/29/09
41	100% DESIGN DEVELOPMENT	07/29/09
42	100% DESIGN DEVELOPMENT	07/29/09
43	100% DESIGN DEVELOPMENT	07/29/09
44	100% DESIGN DEVELOPMENT	07/29/09
45	100% DESIGN DEVELOPMENT	07/29/09
46	100% DESIGN DEVELOPMENT	07/29/09
47	100% DESIGN DEVELOPMENT	07/29/09
48	100% DESIGN DEVELOPMENT	07/29/09
49	100% DESIGN DEVELOPMENT	07/29/09
50	100% DESIGN DEVELOPMENT	07/29/09
51	100% DESIGN DEVELOPMENT	07/29/09
52	100% DESIGN DEVELOPMENT	07/29/09
53	100% DESIGN DEVELOPMENT	07/29/09
54	100% DESIGN DEVELOPMENT	07/29/09
55	100% DESIGN DEVELOPMENT	07/29/09
56	100% DESIGN DEVELOPMENT	07/29/09
57	100% DESIGN DEVELOPMENT	07/29/09
58	100% DESIGN DEVELOPMENT	07/29/09
59	100% DESIGN DEVELOPMENT	07/29/09
60	100% DESIGN DEVELOPMENT	07/29/09
61	100% DESIGN DEVELOPMENT	07/29/09
62	100% DESIGN DEVELOPMENT	07/29/09
63	100% DESIGN DEVELOPMENT	07/29/09
64	100% DESIGN DEVELOPMENT	07/29/09
65	100% DESIGN DEVELOPMENT	07/29/09
66	100% DESIGN DEVELOPMENT	07/29/09
67	100% DESIGN DEVELOPMENT	07/29/09
68	100% DESIGN DEVELOPMENT	07/29/09
69	100% DESIGN DEVELOPMENT	07/29/09
70	100% DESIGN DEVELOPMENT	07/29/09
71	100% DESIGN DEVELOPMENT	07/29/09
72	100% DESIGN DEVELOPMENT	07/29/09
73	100% DESIGN DEVELOPMENT	07/29/09
74	100% DESIGN DEVELOPMENT	07/29/09
75	100% DESIGN DEVELOPMENT	07/29/09
76	100% DESIGN DEVELOPMENT	07/29/09
77	100% DESIGN DEVELOPMENT	07/29/09
78	100% DESIGN DEVELOPMENT	07/29/09
79	100% DESIGN DEVELOPMENT	07/29/09
80	100% DESIGN DEVELOPMENT	07/29/09
81	100% DESIGN DEVELOPMENT	07/29/09
82	100% DESIGN DEVELOPMENT	07/29/09
83	100% DESIGN DEVELOPMENT	07/29/09
84	100% DESIGN DEVELOPMENT	07/29/09
85	100% DESIGN DEVELOPMENT	07/29/09
86	100% DESIGN DEVELOPMENT	07/29/09
87	100% DESIGN DEVELOPMENT	07/29/09
88	100% DESIGN DEVELOPMENT	07/29/09
89	100% DESIGN DEVELOPMENT	07/29/09
90	100% DESIGN DEVELOPMENT	07/29/09
91	100% DESIGN DEVELOPMENT	07/29/09
92	100% DESIGN DEVELOPMENT	07/29/09
93	100% DESIGN DEVELOPMENT	07/29/09
94	100% DESIGN DEVELOPMENT	07/29/09
95	100% DESIGN DEVELOPMENT	07/29/09
96	100% DESIGN DEVELOPMENT	07/29/09
97	100% DESIGN DEVELOPMENT	07/29/09
98	100% DESIGN DEVELOPMENT	07/29/09
99	100% DESIGN DEVELOPMENT	07/29/09
100	100% DESIGN DEVELOPMENT	07/29/09

**Increment 3**

THE DESIGNER OF RECORD FOR THIS PROJECT IS RANDALL LAMB ARCHITECTS  
 200 FOLSOM STREET, SUITE 418  
 SAN FRANCISCO, CALIFORNIA 94102  
 TEL: (415) 398-2771  
 FAX: (415) 398-2500  
 WWW.RANDALL-LAMB.COM

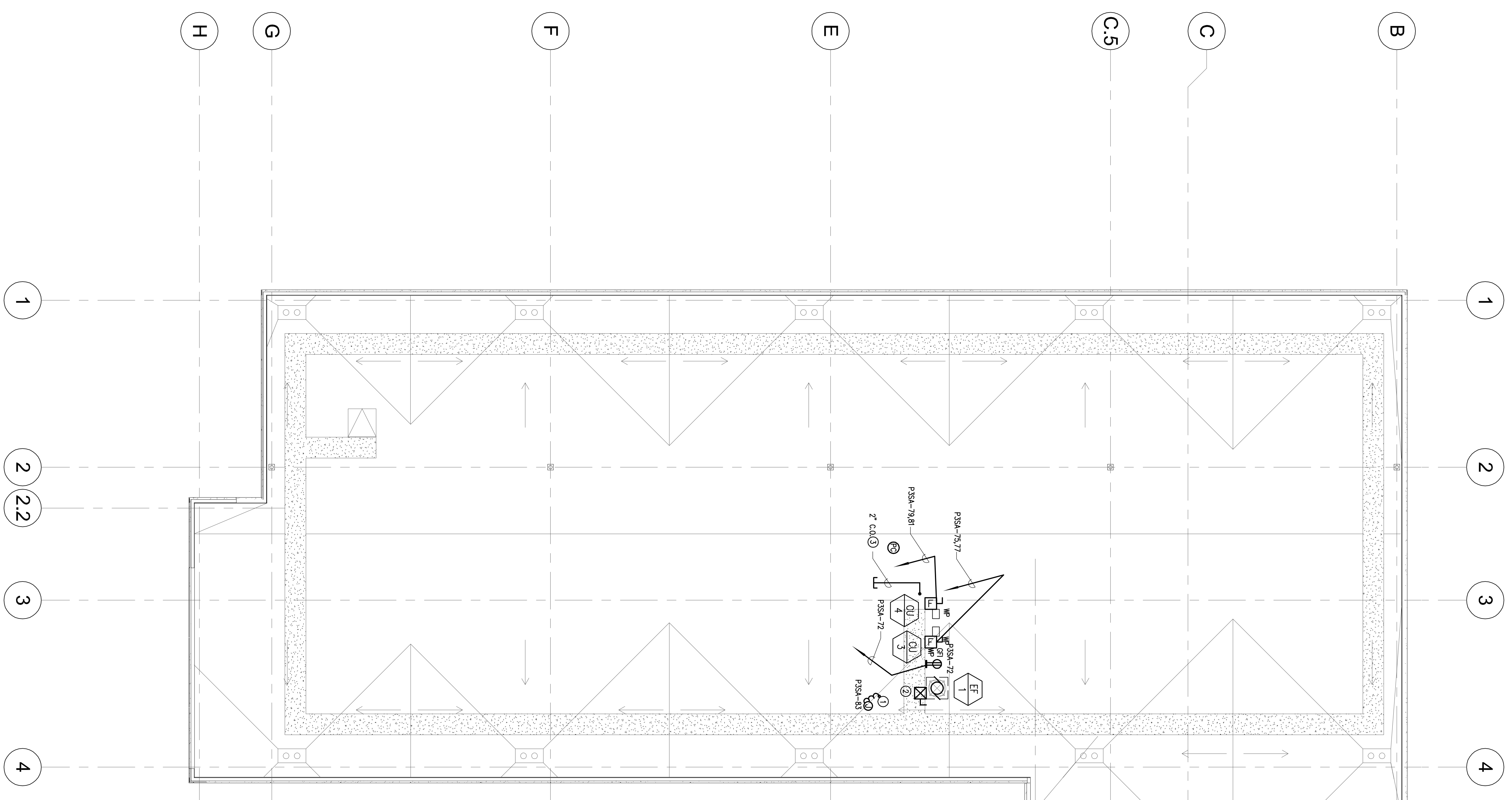
**SKYLINE COLLEGE**  
 SAN MATEO COUNTY  
 COMMUNITY COLLEGE  
 DISTRICT  
**CIP2 DESIGN-BUILD**  
**PROJECT**  
**BUILDING 4**  
**INCREMENT 3**



**PROJECT NO. SF1057020** DRAWN BY: IB  
 DATE: 04/26/09 CHECKED BY: AJS  
 SCALE: 1/8"=1'-0"

**ELECTRICAL**  
**ROOF**  
**POWER AND SIGNAL**  
**PLAN**

SHEET NO. **E-304**



**SHEET NOTES**  
 ① SPARE  
 ② SEE SINGLE LINE DIAGRAM  
 ③ PROVIDE CONDUIT SUB-OUT FOR FUTURE SATELLITE DISH CABLES. COORDINATE LOCATION IN FIELD.

**ROOF PLAN - POWER AND SIGNAL PLAN**  
 SCALE: 1/8"=1'-0"

All drawings and written material appearing herein constitute original and unpublished work of the Architect/Engineer and may not be duplicated, used or disclosed without consent of Architect/Engineer.

If this drawing is not 36" x 48", then this drawing has been revised from its original size. Note scales must be indicated. This line should be equal to one inch.