

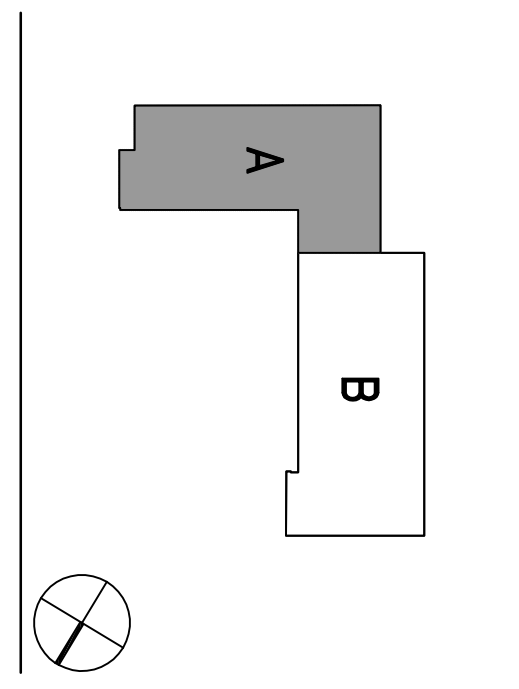
NO.	DESCRIPTION	DATE
01	ISSUE FOR PERMITS	04/20/08
02	100% SCHEMATIC DESIGN	06/13/08
03	50% DESIGN DEVELOPMENT	08/13/08
04	30% DESIGN DEVELOPMENT	07/28/08
05	DATA INCORPORATE #1	10/10/08
06	DATA INCORPORATE #2	11/11/08
07	DATA INCORPORATE #3	11/11/08
08	DATA INCORPORATE #4	12/22/08
09	DATA INCORPORATE #5	02/09/09
10	DATA INCORPORATE #6	04/24/09
11	DATA INCORPORATE #7	05/12/09
12	DATA INCORPORATE #8	05/12/09
13	DATA INCORPORATE #9	05/12/09
14	DATA INCORPORATE #10	05/12/09
15	DATA INCORPORATE #11	05/12/09
16	DATA INCORPORATE #12	05/12/09
17	DATA INCORPORATE #13	05/12/09
18	DATA INCORPORATE #14	05/12/09
19	DATA INCORPORATE #15	05/12/09
20	DATA INCORPORATE #16	05/12/09
21	DATA INCORPORATE #17	05/12/09
22	DATA INCORPORATE #18	05/12/09
23	DATA INCORPORATE #19	05/12/09
24	DATA INCORPORATE #20	05/12/09
25	DATA INCORPORATE #21	05/12/09
26	DATA INCORPORATE #22	05/12/09
27	DATA INCORPORATE #23	05/12/09
28	DATA INCORPORATE #24	05/12/09
29	DATA INCORPORATE #25	05/12/09
30	DATA INCORPORATE #26	05/12/09
31	DATA INCORPORATE #27	05/12/09
32	DATA INCORPORATE #28	05/12/09
33	DATA INCORPORATE #29	05/12/09
34	DATA INCORPORATE #30	05/12/09
35	DATA INCORPORATE #31	05/12/09
36	DATA INCORPORATE #32	05/12/09
37	DATA INCORPORATE #33	05/12/09
38	DATA INCORPORATE #34	05/12/09
39	DATA INCORPORATE #35	05/12/09
40	DATA INCORPORATE #36	05/12/09
41	DATA INCORPORATE #37	05/12/09
42	DATA INCORPORATE #38	05/12/09
43	DATA INCORPORATE #39	05/12/09
44	DATA INCORPORATE #40	05/12/09
45	DATA INCORPORATE #41	05/12/09
46	DATA INCORPORATE #42	05/12/09
47	DATA INCORPORATE #43	05/12/09
48	DATA INCORPORATE #44	05/12/09
49	DATA INCORPORATE #45	05/12/09
50	DATA INCORPORATE #46	05/12/09
51	DATA INCORPORATE #47	05/12/09
52	DATA INCORPORATE #48	05/12/09
53	DATA INCORPORATE #49	05/12/09
54	DATA INCORPORATE #50	05/12/09
55	DATA INCORPORATE #51	05/12/09
56	DATA INCORPORATE #52	05/12/09
57	DATA INCORPORATE #53	05/12/09
58	DATA INCORPORATE #54	05/12/09
59	DATA INCORPORATE #55	05/12/09
60	DATA INCORPORATE #56	05/12/09
61	DATA INCORPORATE #57	05/12/09
62	DATA INCORPORATE #58	05/12/09
63	DATA INCORPORATE #59	05/12/09
64	DATA INCORPORATE #60	05/12/09
65	DATA INCORPORATE #61	05/12/09
66	DATA INCORPORATE #62	05/12/09
67	DATA INCORPORATE #63	05/12/09
68	DATA INCORPORATE #64	05/12/09
69	DATA INCORPORATE #65	05/12/09
70	DATA INCORPORATE #66	05/12/09
71	DATA INCORPORATE #67	05/12/09
72	DATA INCORPORATE #68	05/12/09
73	DATA INCORPORATE #69	05/12/09
74	DATA INCORPORATE #70	05/12/09
75	DATA INCORPORATE #71	05/12/09
76	DATA INCORPORATE #72	05/12/09
77	DATA INCORPORATE #73	05/12/09
78	DATA INCORPORATE #74	05/12/09
79	DATA INCORPORATE #75	05/12/09
80	DATA INCORPORATE #76	05/12/09
81	DATA INCORPORATE #77	05/12/09
82	DATA INCORPORATE #78	05/12/09
83	DATA INCORPORATE #79	05/12/09
84	DATA INCORPORATE #80	05/12/09
85	DATA INCORPORATE #81	05/12/09
86	DATA INCORPORATE #82	05/12/09
87	DATA INCORPORATE #83	05/12/09
88	DATA INCORPORATE #84	05/12/09
89	DATA INCORPORATE #85	05/12/09
90	DATA INCORPORATE #86	05/12/09
91	DATA INCORPORATE #87	05/12/09
92	DATA INCORPORATE #88	05/12/09
93	DATA INCORPORATE #89	05/12/09
94	DATA INCORPORATE #90	05/12/09
95	DATA INCORPORATE #91	05/12/09
96	DATA INCORPORATE #92	05/12/09
97	DATA INCORPORATE #93	05/12/09
98	DATA INCORPORATE #94	05/12/09
99	DATA INCORPORATE #95	05/12/09
100	DATA INCORPORATE #96	05/12/09
101	DATA INCORPORATE #97	05/12/09
102	DATA INCORPORATE #98	05/12/09
103	DATA INCORPORATE #99	05/12/09
104	DATA INCORPORATE #100	05/12/09

INCREMENT 3

THE DIVISION OF PUBLIC WORKS
 HAS REVIEWED THIS DRAWING FOR
 CONFORMANCE WITH THE
 ELECTRICAL CODE AND THE
 MECHANICAL CODE.
 THIS REVIEW IS LIMITED TO THE
 TECHNICAL ASPECTS OF THE
 DRAWING AND DOES NOT
 CONSTITUTE A GUARANTEE OF
 THE ACCURACY OR COMPLETENESS
 OF THE INFORMATION PROVIDED.
 THE REVIEWER'S OFFICE IS
 NOT RESPONSIBLE FOR THE
 DESIGN OR CONSTRUCTION OF
 THE PROJECT.

DATE: 05/12/09
 BY: [Signature]

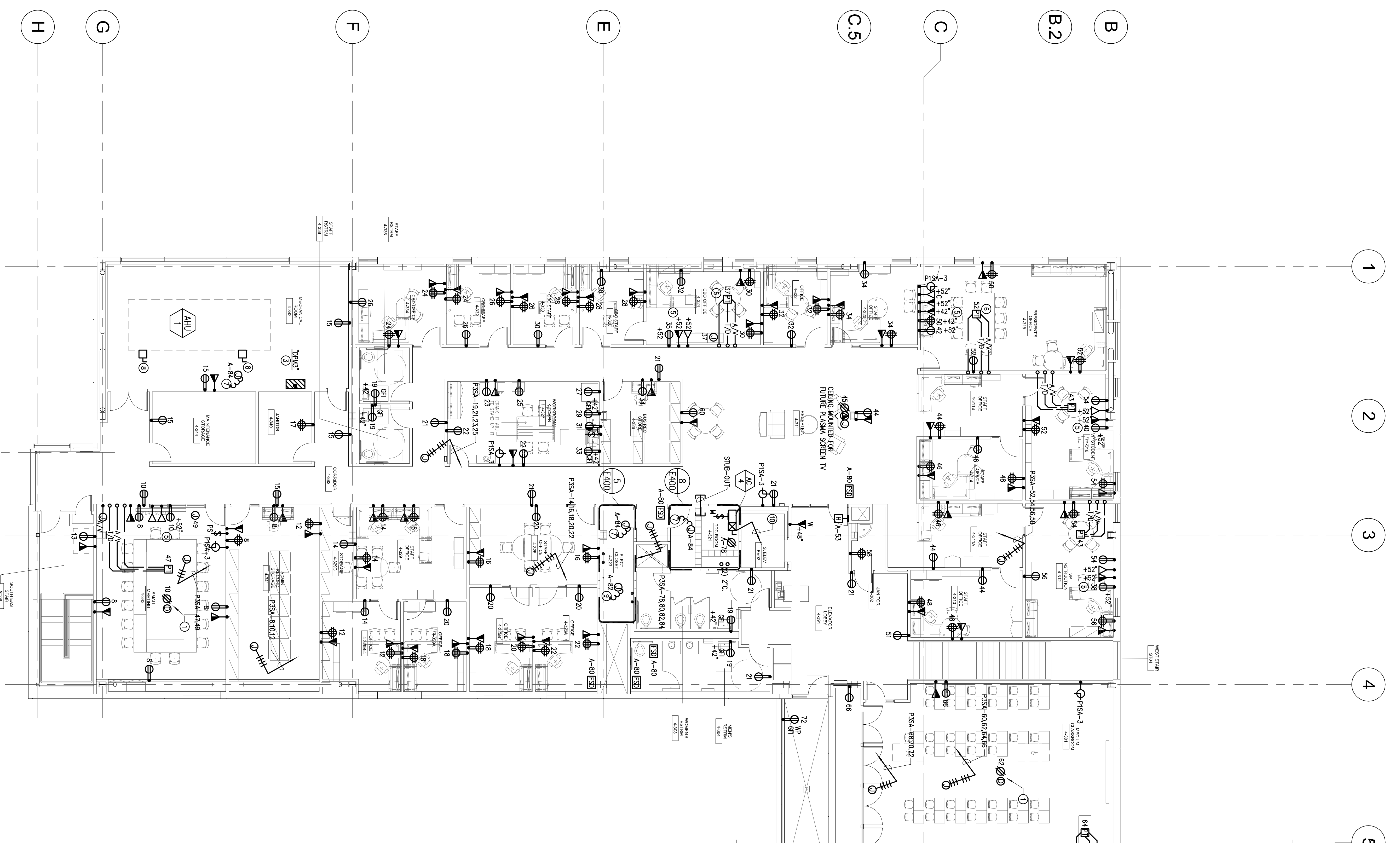
SKYLINE COLLEGE
 SAN MATEO COUNTY
 DISTRICT COLLEGE
 PROJECT
 CIP2 DESIGN-BUILD
 BUILDING 4
 INCREMENT 3



LEVEL 3
POWER AND SIGNAL
PLAN
SECTOR A

PROJECT NO: SFT051010
 DATE: 04/28/08
 SCALE: 3/8"=1'-0"
 DRAWN BY: JB
 CHECKED BY: ALS
 SHEET NO: E-303A

- SHEET NOTES**
- REFER TO ARCHITECTURAL DRAWINGS FOR EXACT DIMENSIONS AND MOUNTING HEIGHTS.
 - ALL CIRCUITS THIS SHEET FED FROM PANEL "PSSA", UNLESS NOTED OTHERWISE.
 - CONNECT CEILING MOUNTED PROJECTOR.
 - 220V CONNECTION TO ELECTRIC DOOR LOCK. COORDINATE WITH SECURITY.
 - SET DETAIL 10/E-500 FOR ADDITIONAL INFORMATION.
 - J-BOX WITH 3/4" C. FOR SECURITY CAMERA. COORDINATE REQUIREMENTS WITH SECURITY DRAWINGS.
 - PLAT PANEL DISPLAY COORDINATE CONNECTION WITH ARCHITECT PRIOR TO ROUGH-IN.
 - COORDINATE LOCATION OF FLOOR MOUNTED OUTLETS WITH ARCHITECT PRIOR TO ROUGH-IN.
 - PROVIDE 120V TO BMS POWER SUPPLY IN THIS ROOM. COORDINATE LOCATION WITH CONTROLS CONTRACTOR.
 - SET SINGLE LINE DIAGRAM.
 - CONNECT FIRE ALARM PANEL.
 - 247L, 1P/250V, 3/4" C. TO OUT-4 ON ROOF.



LEVEL 3 - POWER AND SIGNAL PLAN - SECTOR A
 SCALE: 3/8"=1'-0"

All drawings and other material depending hereon, constitute original and confidential work of the Architectural Firm and its employees, and shall remain the property of the Architectural Firm. No part of this drawing shall be reproduced, stored in a retrieval system, or transmitted in any form or by any means, electronic, mechanical, photocopying, recording, or by any information storage and retrieval system, without the prior written permission of the Architectural Firm.

This drawing is not to be used for any other project without the prior written permission of the Architectural Firm. The Architectural Firm is not responsible for the accuracy or completeness of the information provided by others.