

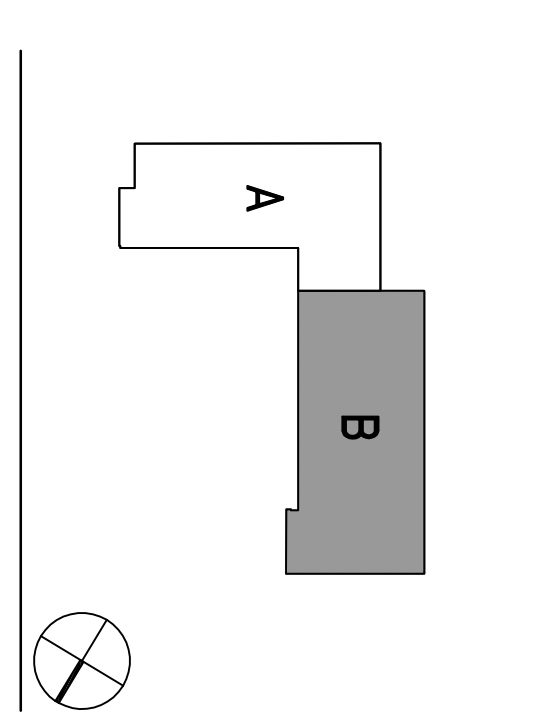
NO.	REVISIONS	DATE
01	ISSUE FOR PERMITS	04/20/08
02	100% SCHEMATIC DESIGN	04/20/08
03	50% DESIGN DEVELOPMENT	06/13/08
04	SCHEMATIC DESIGN	07/22/08
05	PERMISSION DEVELOPMENT	07/22/08
06	50% DESIGN DEVELOPMENT	10/10/08
07	60% DESIGN DEVELOPMENT	11/11/08
08	REVIEW FOR PERMITS	11/11/08
09	STRUCTURE & ELEC PANELS	11/11/08
10	DATA REVISION #1 (OWN REVIEW)	12/23/08
11	INTERNAL OWN REVIEW INCREMENT 3	02/09/09
12	DATA REVISION #2	04/20/09
13	REVISIONS FOR PERMITS	05/15/09
14	DATA REVISION #3	05/15/09
15	ISSUED TO FIELD	05/15/09
16	RECORD DRAWINGS	12/27/10

THE DIVISION OF THE STATE ARCHITECT  
 FILE # 01-110117  
 AC \_\_\_\_\_ DATE \_\_\_\_\_  
 SS \_\_\_\_\_ DATE \_\_\_\_\_  
 IDENTIFICATION STAMP

**Increment 3**

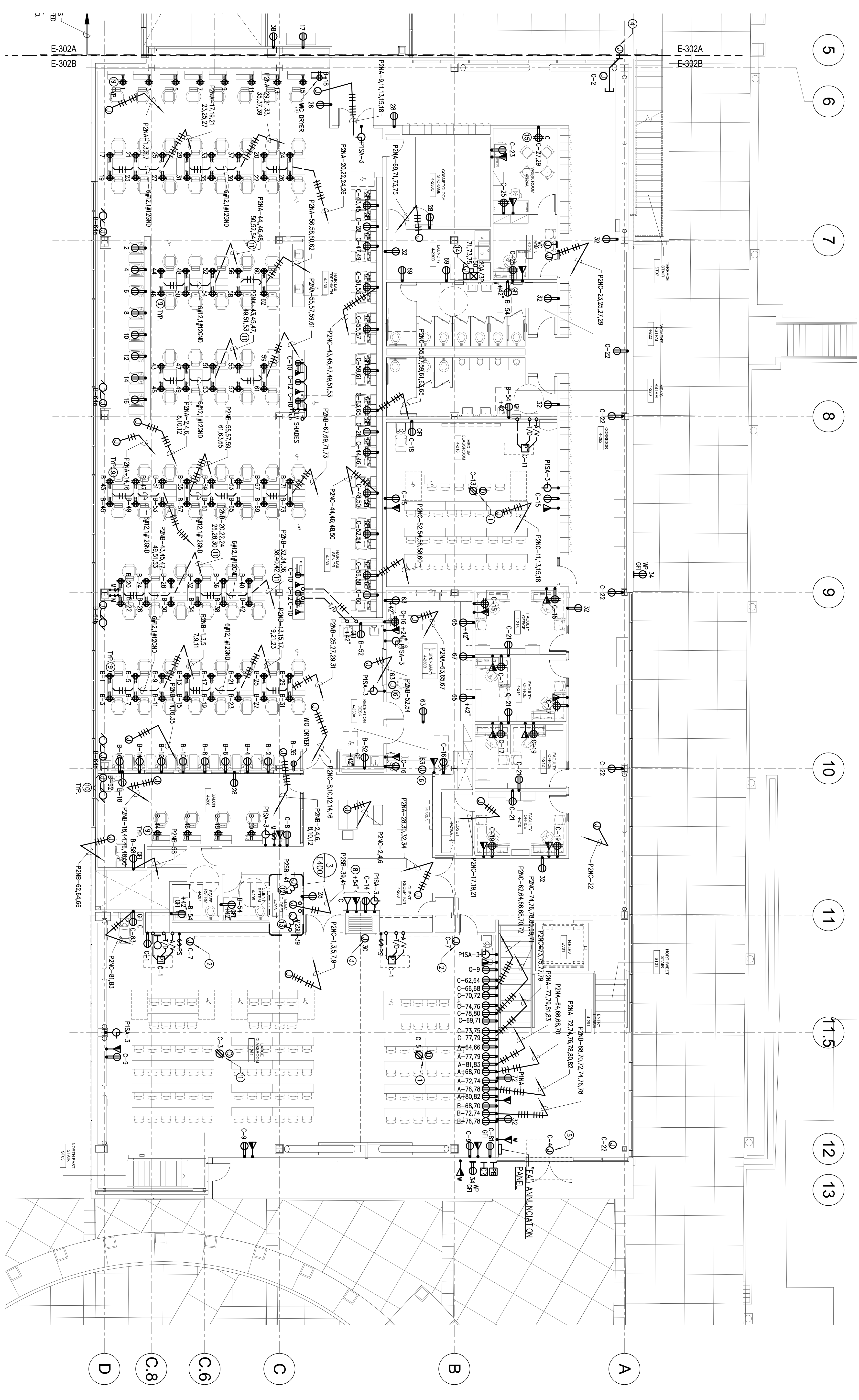
**SKYLINE COLLEGE**  
 SAN MATEO COUNTY  
 SAN MATEO DISTRICT COLLEGE  
 DISTRICT

**CIP2 DESIGN-BUILD PROJECT**  
**BUILDING 4 INCREMENT 3**



PROJECT NO: SFT057040 DRAWN BY: JB  
 DATE: 04/28/08 CHECKED BY: ALS  
 SCALE: 1/8"=1'-0"

SHEET TITLE:  
**LEVEL 2 POWER AND SIGNAL PLAN**  
**SECTOR B**



- SHEET NOTES**
- 1 REFER TO ARCHITECTURAL DRAWINGS FOR EXACT DIMENSIONS AND MOUNTING HEIGHTS.
  - 2 B-DROPS WITHOUT PANEL DESIGNATIONS ROUTE TO PANEL "PNC", WITH DESIGNATION "F" ROUTE TO PANEL "PNCB". WITH DESIGNATION "C" ROUTE TO PANEL "PNC".
  - 3 CONNECT CEILING MOUNTED PROTECTORS.
  - 4 CONNECT PROTECTION SCREENS AS REQUIRED.
  - 5 CONNECT MOTORIZED PARTITION AS REQUIRED.
  - 6 J-BOX WITH 3/4" C FOR SECURITY CAMERA, COORDINATE REQUIREMENTS WITH SECURITY DRAWINGS.
  - 7 120V CONNECTION FOR POWER DOOR ASSISTANCE, COORDINATE WITH SECURITY.
  - 8 CONNECT COILED DOOR OPERATOR AS REQUIRED.
  - 9 FOR LOCAL DOOR POWER SUPPLY CONNECTION, COORDINATE WITH SECURITY DRAWINGS.
  - 10 FLAT PANEL DISPLAY, COORDINATE CONNECTION WITH AV CONSULTANT.
  - 11 OUTLETS LOCATED IN CASERWORK, REFER TO ARCHITECTURAL DETAILS.
  - 12 CONNECT MECHO SHADES AS REQUIRED, COORDINATE REQUIREMENTS WITH SUPPLIER AND SWITCH LOCATION WITH ARCHITECT.
  - 13 #1/2, #1/2 SNO, 1" C.
  - 14 PROVIDE 120V TO BMS POWER SUPPLY IN THIS ROOM, COORDINATE LOCATION WITH CONTROLS CONTRACTOR.
  - 15 CONNECT TO FIRE ALARM BOOSTER PANEL.
  - 16 CONNECT WASHER AS REQUIRED.
  - 17 COORDINATE LOCATION OF REFRIGERATOR AND MICROWAVE IN THIS ROOM.