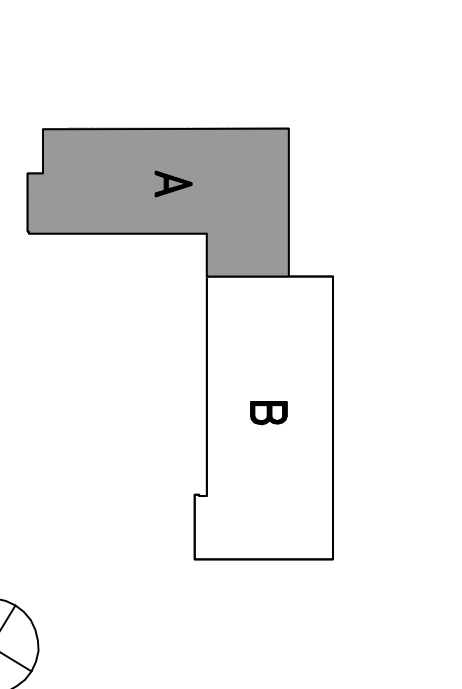


NO.	ISSUES/REVISIONS	DATE
042008	100% SCHEMATIC DESIGN	04/20/08
041208	50% DESIGN DEVELOPMENT	04/12/08
072908	SCHEMATIC DESIGN DEVELOPMENT	07/29/08
104108	10% DESIGN DEVELOPMENT	10/41/08
111108	20% DESIGN DEVELOPMENT	11/11/08
122208	30% DESIGN DEVELOPMENT	12/22/08
020609	40% DESIGN DEVELOPMENT	02/06/09
040609	50% DESIGN DEVELOPMENT	04/06/09
052209	60% DESIGN DEVELOPMENT	05/22/09
082209	70% DESIGN DEVELOPMENT	08/22/09
041911	80% DESIGN DEVELOPMENT	04/19/11
062511	90% DESIGN DEVELOPMENT	06/25/11

THE DIVISION OF  
**Increment 3**  
 THE # \_\_\_\_\_ OF  
 THE # \_\_\_\_\_ OF  
 THE # \_\_\_\_\_ OF  
 THE # \_\_\_\_\_ OF

ISSUED TO FIELD  
 RECORD DRAWINGS  
 RECORD DRAWINGS REV. 1  
 RECORD DRAWINGS REV. 2  
 RECORD DRAWINGS REV. 3  
 RECORD DRAWINGS REV. 4  
 RECORD DRAWINGS REV. 5

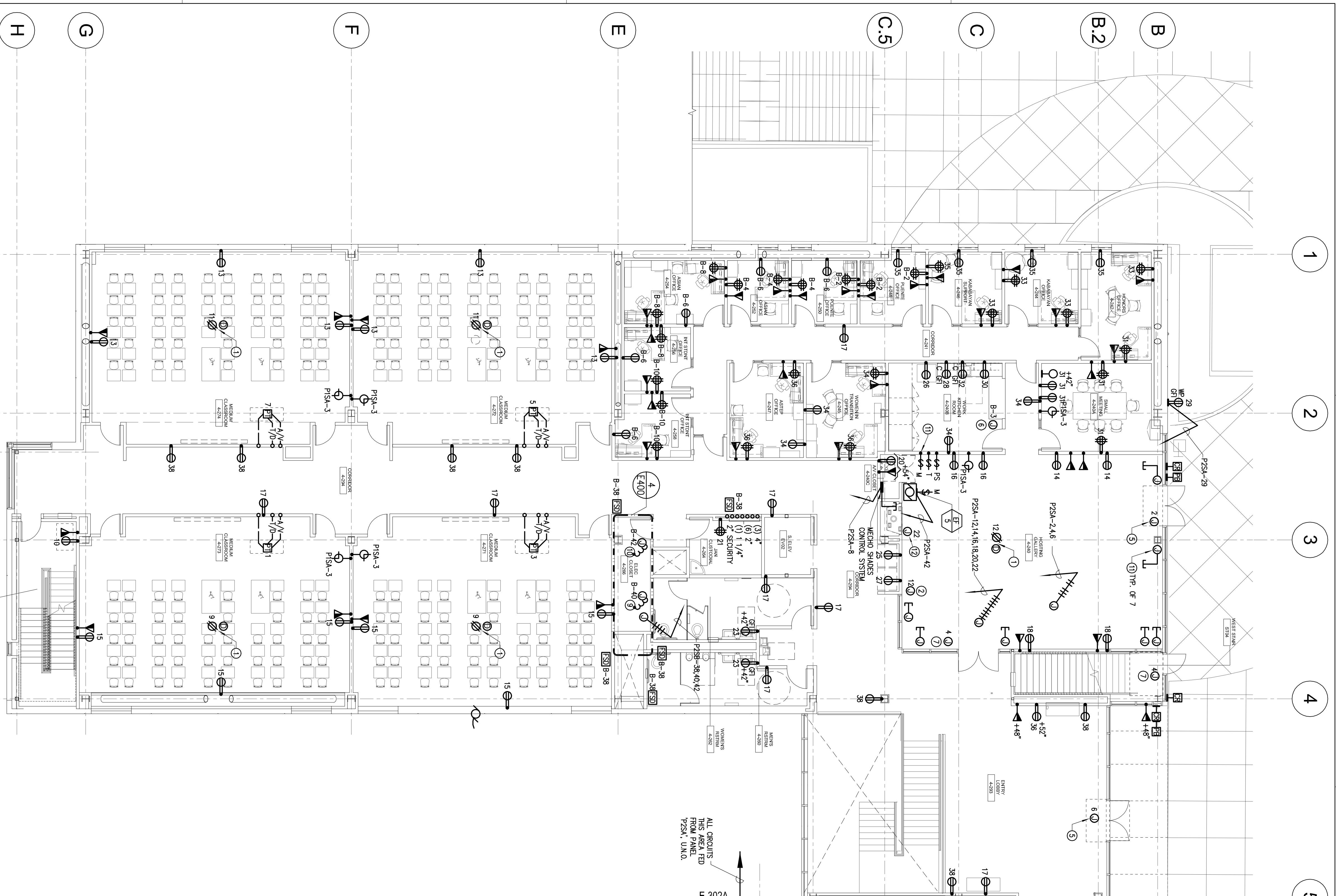
**SKYLINE COLLEGE  
 CIP2 DESIGN-BUILD  
 PROJECT  
 BUILDING 4  
 INCREMENT 3**



PROJECT NO. SF1057010 DRAWN BY: IB  
 DATE: 04/26/08 CHECKED BY: AJS  
 SCALE: 1/8"=1'-0"

**LEVEL 2  
 POWER AND SIGNAL  
 PLAN  
 SECTOR A**

SHEET NO. **E-302A**



- SHEET NOTES**
1. REFER TO ARCHITECTURAL DRAWINGS FOR EXACT DIMENSIONS AND MOUNTING HEIGHTS.
  2. CIRCUITS WITHOUT PANEL DESIGNATIONS ROUTE TO PANEL P2SA\*, WITH DESIGNATION 'B' ROUTE TO PANEL P2SB\*.
  3. CONNECT CEILING MOUNTED PROJECTIONS.
  4. CONNECT PROJECTION SCREENS AS REQUIRED.
  5. NOT USED.
  6. 120V CONNECTION FOR POWER DOOR ASSISTANCE, COORDINATE WITH SECURITY.
  7. CONNECT COINTEGRATED DOOR OPERATOR AS REQUIRED.
  8. FOR LOCAL DOOR POWER SUPPLY CONNECTION, COORDINATE WITH SECURITY DRAWINGS.
  9. FLAT PANEL DISPLAY, COORDINATE CONNECTION WITH AV CONSULTANT.
  10. CONNECT TO FREE ALARM BOOSTER PANEL.
  11. PROVIDE 120V TO BUS POWER SUPPLY IN THIS ROOM, COORDINATE LOCATION WITH CONTROLS CONTRACTOR.
  12. CONNECT MECH. SHADERS AS REQUIRED, COORDINATE REQUIREMENTS WITH SUPPLIER. LOCATE MECH. SHADE CONTROL SYSTEM IN A/V CLOSET AND MANUAL SWITCH LOCATION, COORDINATE WITH ARCHITECT.
  13. FOR FREE PLACE SIGN.

**LEVEL 2 - POWER AND SIGNAL PLAN - SECTOR A**

SCALE: 1/8"=1'-0"

All drawings and written material appearing herein constitute original and unpublished work of the Architect/Engineer and may not be duplicated, used or disclosed without consent of Architect/Engineer.

If this drawing is not 36"x42", then the drawing has been revised from its original size. Model scales must be indicated. This line should be equal to one inch.