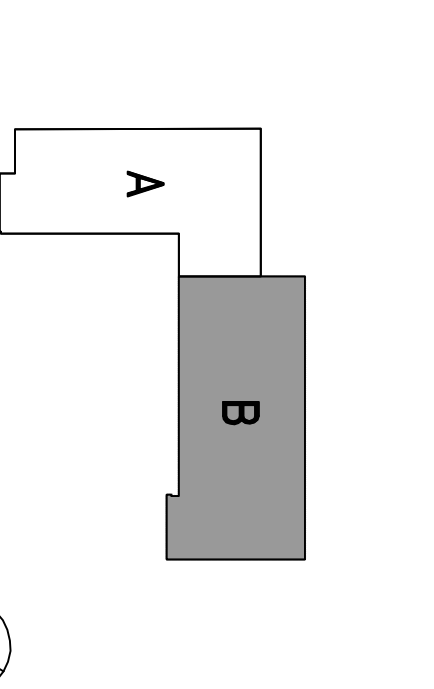


NO.	ISSUES/REVISIONS	DATE
100	100% SCHEMATIC DESIGN	04/20/08
101	20% DESIGN DEVELOPMENT	06/11/08
102	30% DESIGN DEVELOPMENT	07/29/08
103	40% DESIGN DEVELOPMENT	10/10/08
104	50% DESIGN DEVELOPMENT	11/19/08
105	60% DESIGN DEVELOPMENT	12/22/08
106	70% DESIGN DEVELOPMENT	02/06/09
107	80% DESIGN DEVELOPMENT	04/02/09
108	90% DESIGN DEVELOPMENT	05/22/09
109	100% DESIGN DEVELOPMENT	06/22/09
110	RECORD DRAWINGS REV. 1	04/18/11
111	RECORD DRAWINGS REV. 2	06/25/11
112	RECORD DRAWINGS REV. 3	06/25/11

Increment 3

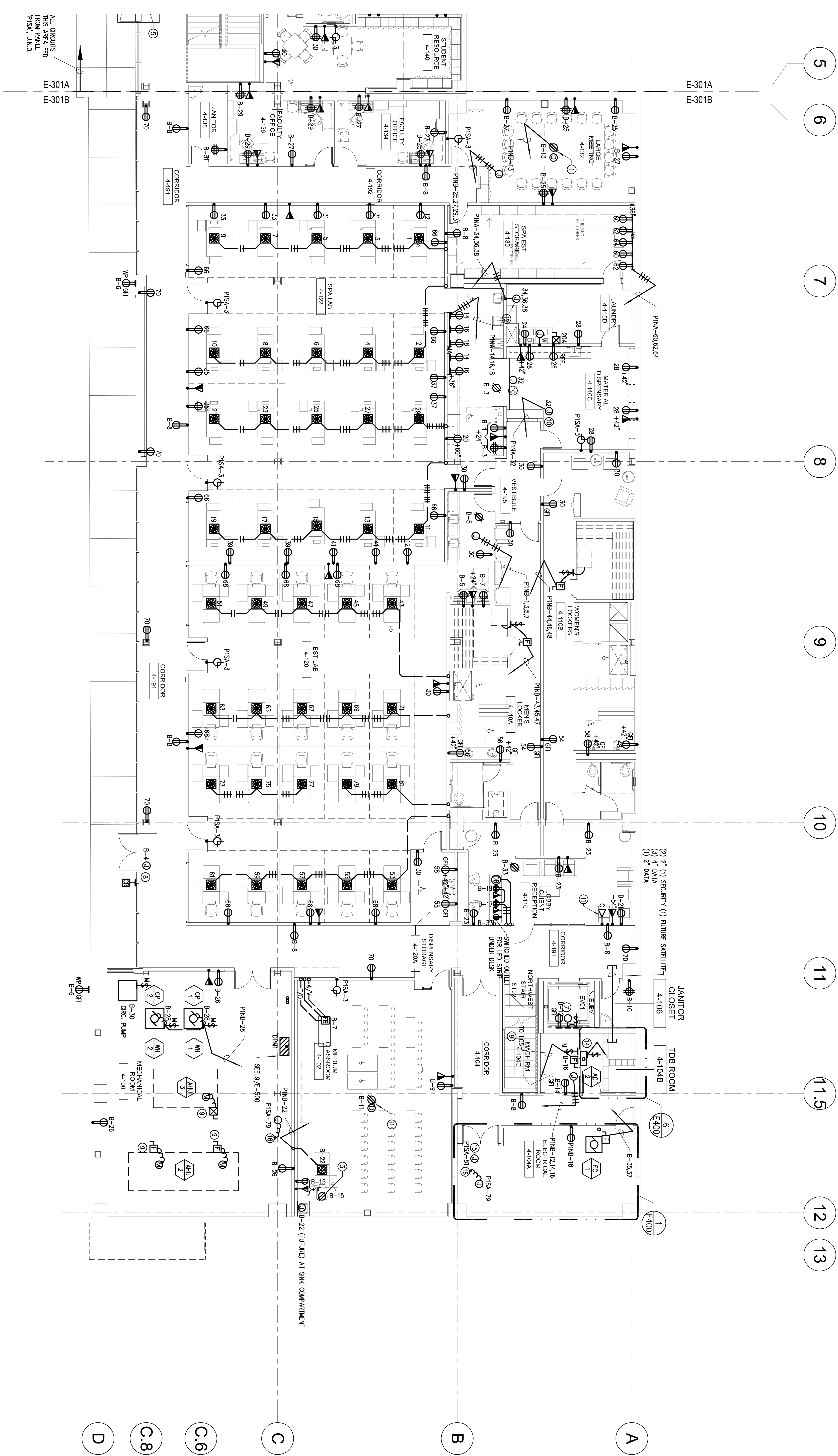
NO.	ISSUES/REVISIONS	DATE
113	100% SCHEMATIC DESIGN	04/20/08
114	20% DESIGN DEVELOPMENT	06/11/08
115	30% DESIGN DEVELOPMENT	07/29/08
116	40% DESIGN DEVELOPMENT	10/10/08
117	50% DESIGN DEVELOPMENT	11/19/08
118	60% DESIGN DEVELOPMENT	12/22/08
119	70% DESIGN DEVELOPMENT	02/06/09
120	80% DESIGN DEVELOPMENT	04/02/09
121	90% DESIGN DEVELOPMENT	05/22/09
122	100% DESIGN DEVELOPMENT	06/22/09
123	RECORD DRAWINGS REV. 1	04/18/11
124	RECORD DRAWINGS REV. 2	06/25/11
125	RECORD DRAWINGS REV. 3	06/25/11

SKYLINE COLLEGE
 SAN MATEO COUNTY
 DISTRICT
 COMMUNITY COLLEGE
CIP2 DESIGN-BUILD PROJECT BUILDING 4 INCREMENT 3



LEVEL 1 POWER AND SIGNAL PLAN SECTOR B

PROJECT NO. SF1057210 DRAWN BY: IB
 DATE: 04/26/08 CHECKED BY: AJS
 SCALE: 3/32"=1'-0"
 SHEET TITLE: E-301B



- SHEET NOTES**
- REFER TO ARCHITECTURAL DRAWINGS FOR EXACT DIMENSIONS AND MOUNTING HEIGHTS.
 - CIRCUITS WITHOUT PANEL DESIGNATIONS ROUTE TO PANEL "PNA", WITH DESIGNATION "B" ROUTE TO PANEL "PNSB".
 - CONNECT CEILING MOUNTED PROJECTOR.
 - CONNECT PROJECTION SCREEN AS REQUIRED.
 - CEILING RECEPTACLE FOR FUTURE CAMERA.
 - 1-BOX WITH 3/4" FC FOR SECURITY CAMERA. COORDINATE REQUIREMENTS WITH SECURITY DRAWINGS.
 - 120V CONNECTION FOR POWER DOOR ASSISTANCE. COORDINATE WITH SECURITY.
 - NOT USED.
 - IN ELEVATOR PIT PROVIDE WALL MOUNT FOUR AWG (1)-28AWG, 120V OR EQUAL.
 - FOR LOCAL DOOR POWER SUPPLY CONNECTION, REFER TO SECURITY DRAWINGS.
 - SEE SINGLE LINE DIAGRAM SHEET E-100.
 - CONNECT COUNTER DOOR OPERATOR AS REQUIRED.
 - FULL PANEL DISPLAY. COORDINATE CONNECTION WITH AV CONSULTANT.
 - CONNECT WASHER AS REQUIRED.
 - NOT USED.
 - 1/2" 1/2" O.D. 1/2" I.D. TO CU-2 ON ROOF.
 - CONNECT TO FIRE ALARM BOOSTER PANEL.
 - PROVIDE 120V POWER TO (2) SMS POWER SUPPLIES IN THIS ROOM. COORDINATE LOCATION WITH CONTRACTORS.