

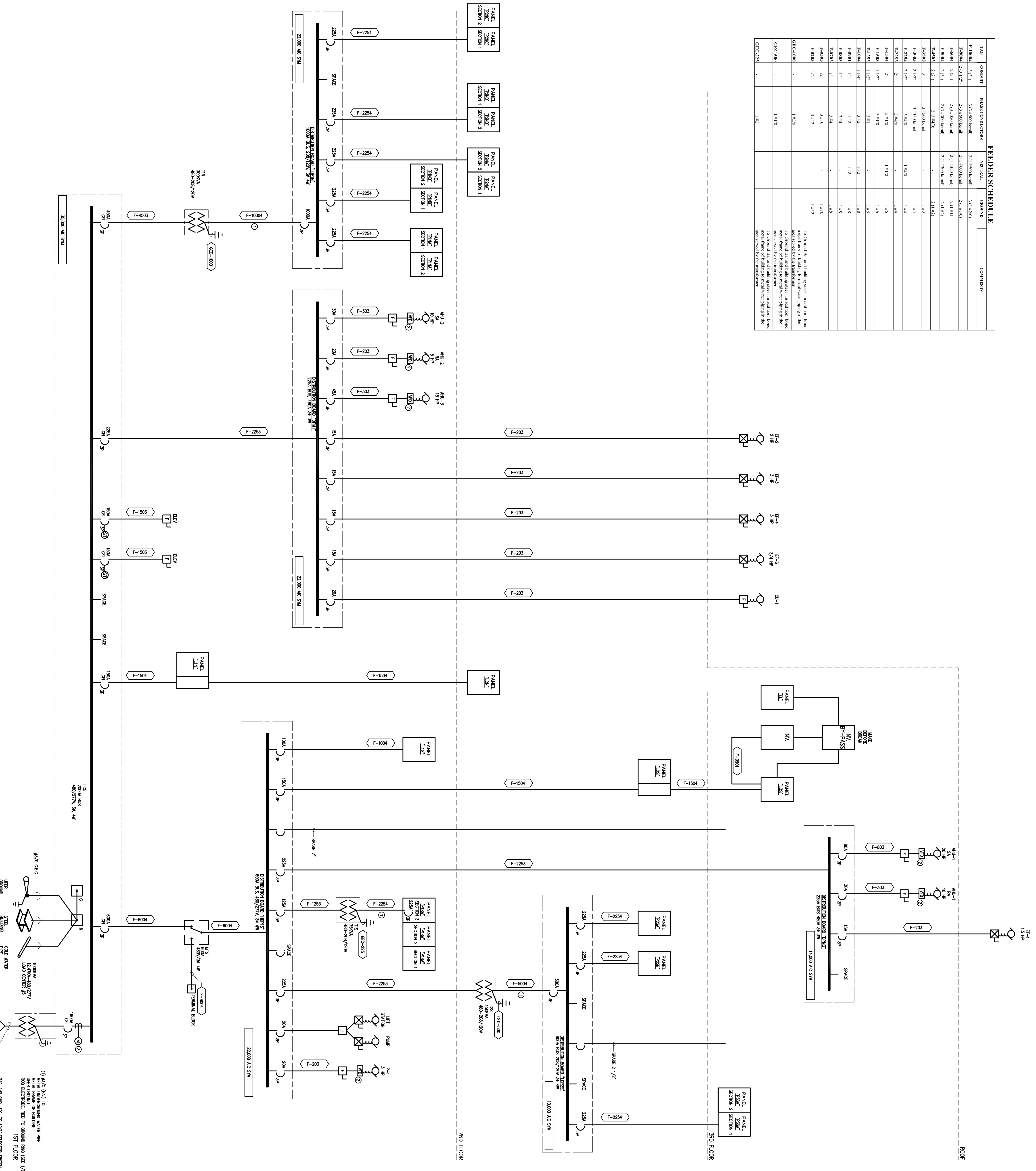
| NO.  | DESCRIPTION             | DATE     |
|------|-------------------------|----------|
| 1001 | SCHEMATIC DESIGN        | 04/20/08 |
| 1002 | 50% DESIGN DEVELOPMENT  | 08/13/08 |
| 1003 | SCHEMATIC DESIGN        | 07/28/08 |
| 1004 | 50% DESIGN DEVELOPMENT  | 10/10/08 |
| 1005 | 60% DESIGN DEVELOPMENT  | 11/11/08 |
| 1006 | 70% DESIGN DEVELOPMENT  | 11/11/08 |
| 1007 | 80% DESIGN DEVELOPMENT  | 12/23/08 |
| 1008 | 90% DESIGN DEVELOPMENT  | 02/03/09 |
| 1009 | 100% DESIGN DEVELOPMENT | 05/12/09 |
| 1010 | AS-BUILT                | 08/10/09 |
| 1011 | REVISION                | 12/27/10 |

DIVISION OF  
 PUBLIC WORKS  
 SAN FRANCISCO  
 PROJECT # 01-110117  
 SHEET # 41-C1  
 DATE \_\_\_\_\_  
 AC \_\_\_\_\_  
 SSS \_\_\_\_\_  
 IDENTIFICATION STAMP

**SKYLINE COLLEGE**  
 SAN MATEO COUNTY  
 DISTRICT COLLEGE  
**CIP2 DESIGN-BUILD**  
**PROJECT**  
**BUILDING 4**  
**INCREMENT 3**

PROJECT NO: SP105100 DRAWN BY: JB  
 DATE: 04/28/08 CHECKED BY: ALS  
 SCALE: NONE  
**SINGLE LINE**  
**DIAGRAM**

| FEEDER SCHEDULE |          |                 |                 |           |          |
|-----------------|----------|-----------------|-----------------|-----------|----------|
| TAG             | CONDUIT  | PHASE CONDUITS  | NEUTRAL         | GROUND    | COMMENTS |
| F-600A          | 1/2"     | 3 (1.500 kcmil) | 3 (1.500 kcmil) | 3 (1.500) |          |
| F-600B          | 2 (1/2") | 2 (1.500 kcmil) | 2 (1.500 kcmil) | 2 (1.500) |          |
| F-600C          | 1/2"     | 2 (1.500 kcmil) | 2 (1.500 kcmil) | 2 (1.500) |          |
| F-600D          | 1/2"     | 2 (1.500 kcmil) | 2 (1.500 kcmil) | 2 (1.500) |          |
| F-600E          | 1/2"     | 2 (1.500 kcmil) | 2 (1.500 kcmil) | 2 (1.500) |          |
| F-600F          | 1/2"     | 2 (1.500 kcmil) | 2 (1.500 kcmil) | 2 (1.500) |          |
| F-600G          | 1/2"     | 2 (1.500 kcmil) | 2 (1.500 kcmil) | 2 (1.500) |          |
| F-600H          | 1/2"     | 2 (1.500 kcmil) | 2 (1.500 kcmil) | 2 (1.500) |          |
| F-600I          | 1/2"     | 2 (1.500 kcmil) | 2 (1.500 kcmil) | 2 (1.500) |          |
| F-600J          | 1/2"     | 2 (1.500 kcmil) | 2 (1.500 kcmil) | 2 (1.500) |          |
| F-600K          | 1/2"     | 2 (1.500 kcmil) | 2 (1.500 kcmil) | 2 (1.500) |          |
| F-600L          | 1/2"     | 2 (1.500 kcmil) | 2 (1.500 kcmil) | 2 (1.500) |          |
| F-600M          | 1/2"     | 2 (1.500 kcmil) | 2 (1.500 kcmil) | 2 (1.500) |          |
| F-600N          | 1/2"     | 2 (1.500 kcmil) | 2 (1.500 kcmil) | 2 (1.500) |          |
| F-600O          | 1/2"     | 2 (1.500 kcmil) | 2 (1.500 kcmil) | 2 (1.500) |          |
| F-600P          | 1/2"     | 2 (1.500 kcmil) | 2 (1.500 kcmil) | 2 (1.500) |          |
| F-600Q          | 1/2"     | 2 (1.500 kcmil) | 2 (1.500 kcmil) | 2 (1.500) |          |
| F-600R          | 1/2"     | 2 (1.500 kcmil) | 2 (1.500 kcmil) | 2 (1.500) |          |
| F-600S          | 1/2"     | 2 (1.500 kcmil) | 2 (1.500 kcmil) | 2 (1.500) |          |
| F-600T          | 1/2"     | 2 (1.500 kcmil) | 2 (1.500 kcmil) | 2 (1.500) |          |
| F-600U          | 1/2"     | 2 (1.500 kcmil) | 2 (1.500 kcmil) | 2 (1.500) |          |
| F-600V          | 1/2"     | 2 (1.500 kcmil) | 2 (1.500 kcmil) | 2 (1.500) |          |
| F-600W          | 1/2"     | 2 (1.500 kcmil) | 2 (1.500 kcmil) | 2 (1.500) |          |
| F-600X          | 1/2"     | 2 (1.500 kcmil) | 2 (1.500 kcmil) | 2 (1.500) |          |
| F-600Y          | 1/2"     | 2 (1.500 kcmil) | 2 (1.500 kcmil) | 2 (1.500) |          |
| F-600Z          | 1/2"     | 2 (1.500 kcmil) | 2 (1.500 kcmil) | 2 (1.500) |          |



**SHEET NOTES:**  
 1. FEEDER LESS THAN 10 FEET.  
 2. BY OTHER.  
 3. FEEDER LESS THAN 10 FEET.  
 4. FEEDER LESS THAN 10 FEET.  
 5. FEEDER LESS THAN 10 FEET.  
 6. FEEDER LESS THAN 10 FEET.  
 7. FEEDER LESS THAN 10 FEET.  
 8. FEEDER LESS THAN 10 FEET.  
 9. FEEDER LESS THAN 10 FEET.  
 10. FEEDER LESS THAN 10 FEET.

**SINGLE LINE DIAGRAM**  
 SCALE: NONE