

IDENTIFICATION STAMP  
DIVISION OF THE STATE ARCHITECT  
APPLICATION NUMBER OF XXXXX  
DATE \_\_\_\_\_  
NO. \_\_\_\_\_  
DATE \_\_\_\_\_

DSA SUBMITTAL

**COLLEGE OF SAN MATEO**  
BUILDING 15  
MODERNIZATION  
SMCCCD  
3401 GSM Drive  
San Mateo, CA 94402  
College of San Mateo  
1700 W. Hillside Blvd.  
San Mateo, CA 94402

SHEET TITLE  
**BUILDING 15**  
PLUMBING SCHEDULES,  
LEGEND AND NOTES

REVISIONS table with columns for NO., DATE, and DESCRIPTION.

Table with columns for DATE, DRAWN, CHECKED, SCALE, and N&T JOB NO.

DATE MARCH 9, 2009  
DRAWN RS  
CHECKED DG  
SCALE NONE  
N&T JOB NO.: 2901  
SHEET NUMBER  
**P1.11**

LEGEND AND ABBREVIATIONS

Table mapping SYMBOL, ABBR, and DESCRIPTION. Includes entries for CW (Domestic Cold Water Pipe), HW (Domestic Hot Water Pipe), HMR (Domestic Hot Water Return Pipe), SS/W (Sanitary Sewer/Waste Pipe), SD (Storm Drain), CD (Condensate Drain), V (Vent Pipe), FD (Floor Drain), FOO (Floor Cleanout), POC (Point of Connection), AC (Air Conditioning Unit), HB (Hose Bib), (E) (Existing), GPM (Gallon per Minute), HP (Horsepower), RD (Roof Drain), SMD (See Mechanical Drawings), and VTR (Vent Through Roof).

GENERAL NOTES

- 1. ALL WORK SHALL CONFORM TO 2007 CPC.
- 2. SANITARY WASTE & VENT SYSTEM SHALL BE NO HUB CAST IRON PIPE & FITTINGS WITH SOLDER JOINTS. DWV COPPER PIPE & FITTINGS WITH LEAD FREE SOLDER JOINTS.
- 3. DOMESTIC HOT & COLD WATER SHALL BE TYPE L COPPER WITH WROT FITTINGS AND LEAD FREE SOLDER JOINTS. T-DRIILLED BRAZED JOINTS SHALL BE USED AT CONTRACTOR'S OPTIONS.
- 4. HOT WATER PIPE SHALL BE INSULATED PER TITLE 24.
- 5. FLOOR DRAINS SHALL HAVE TRAP PRIMERS AS REQUIRED BY CODE.
- 6. SEISMIC BRACE PLUMBING AND EQUIPMENT AS REQUIRED BY CODE.

DRAWING LIST

Table listing drawing titles and sheet numbers: P1.11 PLUMBING SCHEDULES, LEGEND AND NOTES; P2.10 PLUMBING DEMOLITION PLAN; P2.11 PLUMBING FLOOR PLAN.

PLUMBING EQUIPMENT SCHEDULE

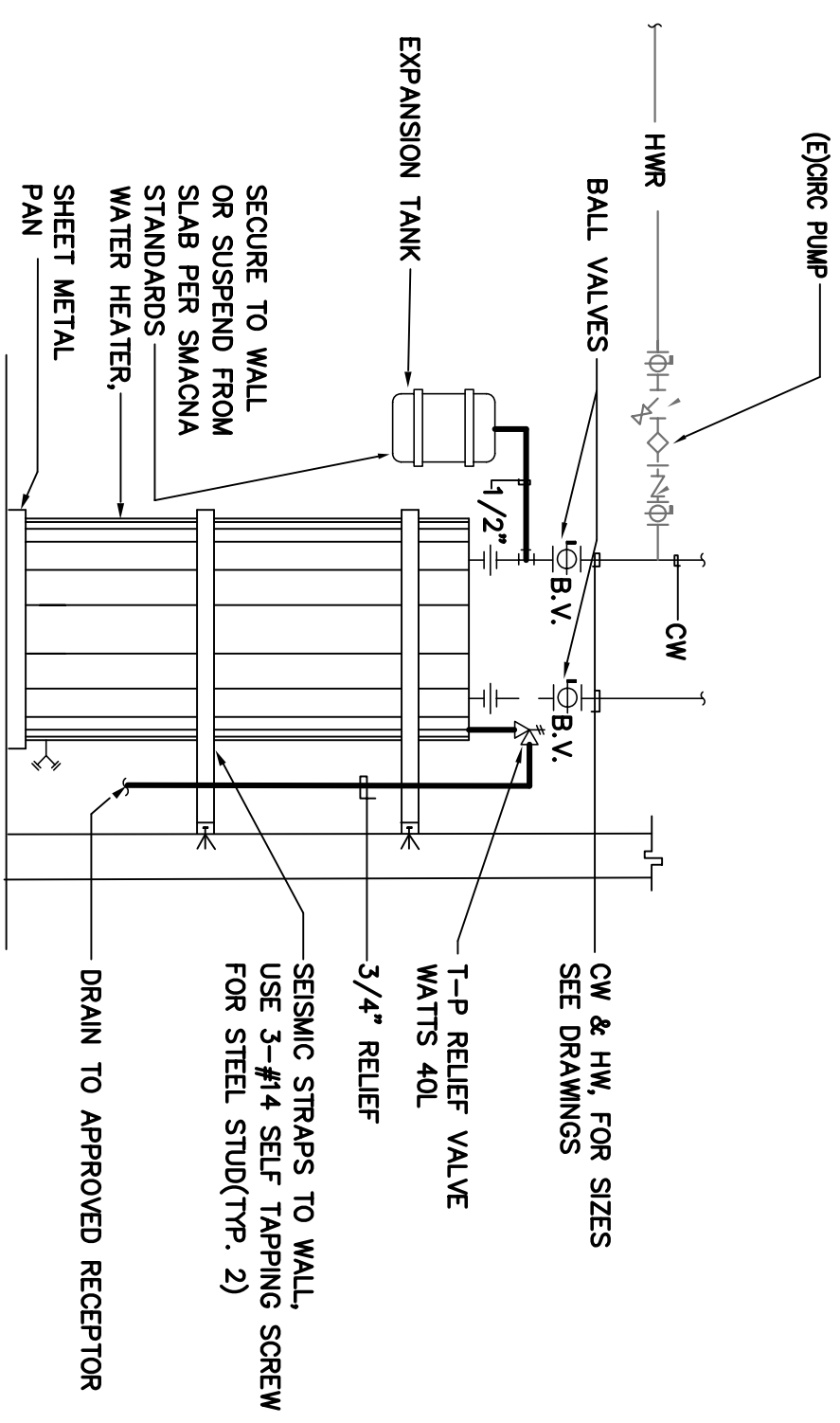
Table with columns for SYMBOL, DESCRIPTION, MANUFACTURER & MODEL NUMBERS, and REMARKS. Lists items like Shock Absorber, Trap Primer, Floor Drain, Floor Cleanout, Wall Cleanout, Water Heater, Expansion Tank, Condensate Pump, and Air Gap.

PLUMBING ROUGH IN-SCHEDULE

Table with columns for SYMBOL, FIXTURE, ROUGH IN SIZE IN INCHES (W, V, HW, CW), and REMARKS. Lists fixtures like Water Closet, Wall Hung MTD H/C, Kitchen Sink, and Water Dispenser.

NOTES:

PROVIDE ALL MISCELLANEOUS APPURTENANCES AS REQUIRED FOR INSTALLATION OF A COMPLETE SYSTEM; INCLUDING BUT NOT LIMITED TO: CARRIERS, BACKING PLATES, STOPS, TRAPS, ETC....  
INSTALL ADA FIXTURES PER THE ADA STANDARDS / T-24 STANDARDS  
PROVIDE TRUEERO LAV-GUARD OR EQUAL PRE-FABRICATED INSULATION ON EXPOSED HOT WATER AND WASTE PIPING TO THE ADA LAVATORY.  
ALL PLUMBING FIXTURES TO CONFORM TO THE CALIFORNIA T-24 WATER CONSERVATION REQUIREMENTS



WATER HEATER DETAIL

SCALE: NONE

