





PARKING

NORTH GATEWAY PACKAGE

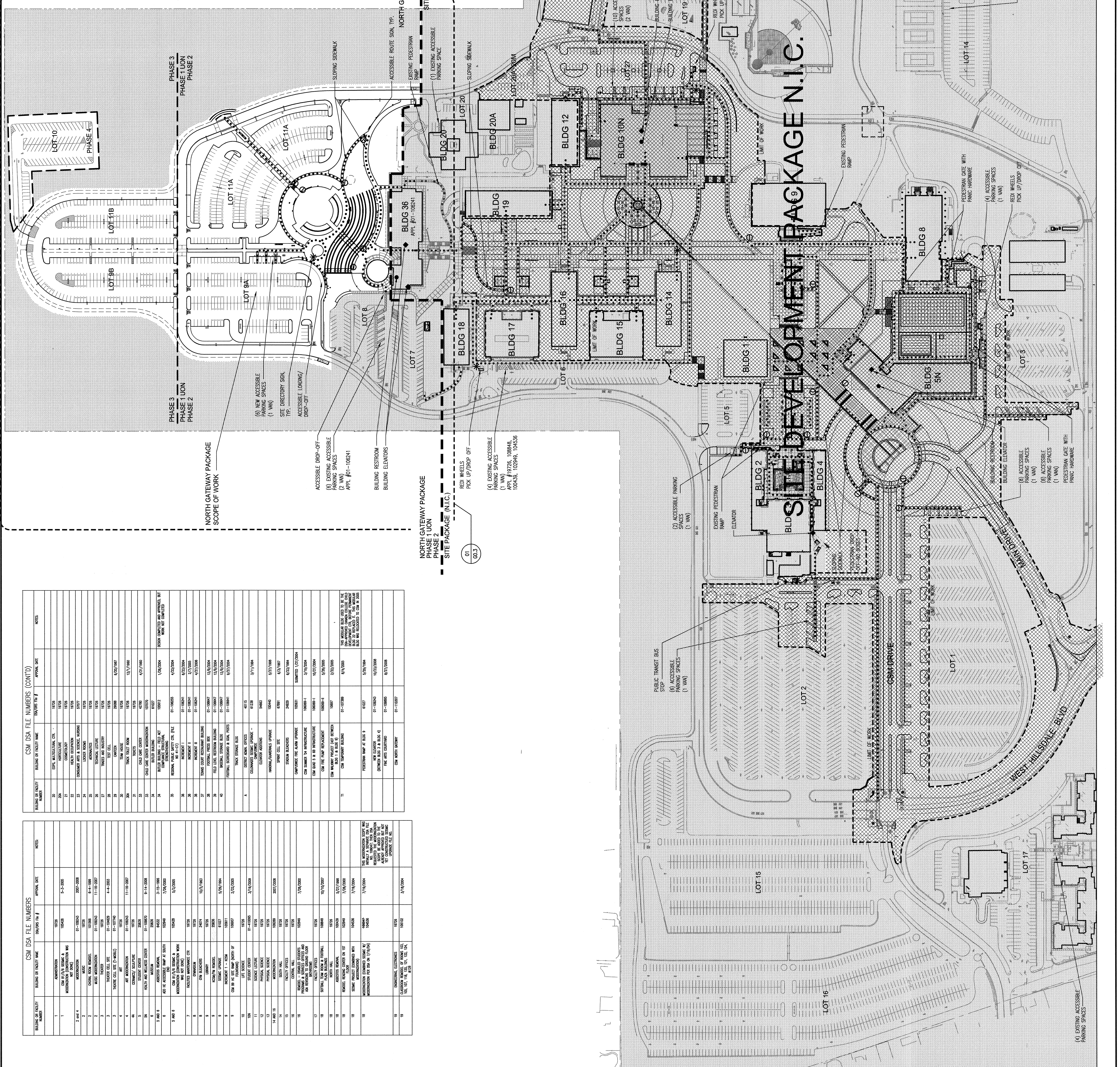
LOT NO.	PROPOSED PARKING SPACES	ACCESSIBLE PARKING SPACES STANDARD	MIN
PHASE 2	202	5	0
11A	228	0	0
PHASE 3	150	0	0
9B	145	0	0
11B	145	0	0
TOTAL	725	5	1

SITE PACKAGE (N.I.C.)

LOT NO.	PROPOSED PARKING SPACES	ACCESSIBLE PARKING SPACES STANDARD	MIN
1	589	5	1
2	687	5	1
3	167	10	2
4	70	3	1
5	71	3	1
6	114	4	2
7&8	12	1	1
9	15	1	1
10	177	4	1
11	556	3	1
12	89	3	1
13	64	3	1
14	27	2	1
15	35	2	1
16	2	1	1
17	2	1	1
18	78	7	2
19	78	7	2
20	78	7	2
21	78	7	2
22	78	7	2
23	78	7	2
24	78	7	2
25	78	7	2
26	78	7	2
27	78	7	2
TOTAL	3,440	51	14

LEGEND

- ACCESSIBLE PATH OF TRAVEL, 5.0% IN DIRECTION OF TRAVEL, AND CROSS SLOPES SHALL NOT EXCEED 2%.
- RAMPS SHALL NOT EXCEED 1:12 SLOPE IN DIRECTION OF TRAVEL.
- BUILDING ELEVATOR. SEE BUILDING PLANS.
- BUILDING RESTROOM. SEE BUILDING PLANS.
- ACCESSIBLE ROUTE SIGN. SEE DETAIL 18 (A.07).
- CAMPUS MAP DIRECTORY (INCLUDES CAMPUS MAP WHICH SHOWS ACCESSIBLE ROUTES)
- OUTSIDE LIMIT OF WORK, N.I.C.
- SITE PACKAGE, N.I.C.



BLDG OR FACILITY NUMBER	BLDG OR FACILITY NAME	DATE	APPROVAL DATE	NOTES
1	ADMINISTRATION	10/28	5-3-2009	
2	CSM (NORTH GATEWAY) N.I.C. (NORTH GATEWAY)	10/28	2007-2009	
3	HEALTH OCCUPATION	10/28	2007-2009	
4	CONSUMER AGEN & SOCIAL WORKERS	10/28	2007-2009	
5	ADAPTATION	10/28	2007-2009	
6	TECHNICAL OFFICE	10/28	2007-2009	
7	PHYSICAL THERAPY	10/28	2007-2009	
8	PHYSICAL THERAPY	10/28	2007-2009	
9	PHYSICAL THERAPY	10/28	2007-2009	
10	PHYSICAL THERAPY	10/28	2007-2009	
11	PHYSICAL THERAPY	10/28	2007-2009	
12	PHYSICAL THERAPY	10/28	2007-2009	
13	PHYSICAL THERAPY	10/28	2007-2009	
14	PHYSICAL THERAPY	10/28	2007-2009	
15	PHYSICAL THERAPY	10/28	2007-2009	
16	PHYSICAL THERAPY	10/28	2007-2009	
17	PHYSICAL THERAPY	10/28	2007-2009	
18	PHYSICAL THERAPY	10/28	2007-2009	
19	PHYSICAL THERAPY	10/28	2007-2009	
20	PHYSICAL THERAPY	10/28	2007-2009	
21	PHYSICAL THERAPY	10/28	2007-2009	
22	PHYSICAL THERAPY	10/28	2007-2009	
23	PHYSICAL THERAPY	10/28	2007-2009	
24	PHYSICAL THERAPY	10/28	2007-2009	
25	PHYSICAL THERAPY	10/28	2007-2009	
26	PHYSICAL THERAPY	10/28	2007-2009	
27	PHYSICAL THERAPY	10/28	2007-2009	
28	PHYSICAL THERAPY	10/28	2007-2009	
29	PHYSICAL THERAPY	10/28	2007-2009	
30	PHYSICAL THERAPY	10/28	2007-2009	
31	PHYSICAL THERAPY	10/28	2007-2009	
32	PHYSICAL THERAPY	10/28	2007-2009	
33	PHYSICAL THERAPY	10/28	2007-2009	
34	PHYSICAL THERAPY	10/28	2007-2009	
35	PHYSICAL THERAPY	10/28	2007-2009	
36	PHYSICAL THERAPY	10/28	2007-2009	