

WORK BY OTHERS

1. HOISTWAY

- 1.1 Legal hoistway sized to the elevator contractor drawings, and plumb within 1" per 100 feet.
 - 1.2 Hoistway ventilation as required by local building code.
 - 1.3 Earthwork if oil line is to be run underground, trenching and back filling from the machine room to the pit. Do not pour floors until elevator contractor has installed the pipeline and conduit.
 - 1.4 Hoistway finished and fireproofed. All seams and nail holes fire taped. Hoistway bevels and ledges may not exceed 2 inches. (No protrusions into the hoistway, including nails, sheet metal, etc.,).
 - 1.5 Hoistway projections, recesses and setbacks exceeding 2 inches must be beveled to 75 degrees, or per elevator code.
 - 1.6 Building support for all elevator equipment loads imposed.
 - 1.7 Non-elevator equipment, such as conduit, wiring, pipes, drain lines, or access doors are prohibited by code.
 - 1.8 Provide full hoistway width support for sills, and supports for other elevator equipment loads imposed and as shown on the elevator drawings.
 - 1.9 The elevator code dictates maximum rail bracket spacing. Provide rail supports acceptable to the elevator contractor at intervals shown on the elevator drawings.
- 1.10 Rough opening in concrete or masonry walls measuring 4" on three sides of elevator entrances.
 - 1.11 For drywall entrances, do not erect the entrance wall until the jambs are installed.
 - 1.12 After the elevator contractor installs the hall sills, other trades shall grout solid all surfaces constituting final finish.
 - 1.13 Insure that floors at entrance sills are flush. Grout from sill to floor if required.
- 1.14 All cutting of walls, floors or partitions, and associated repair, including patching and painting of all finish surfaces.
 - 1.15 OSHA approved removable hoistway guards, barricades, screening, steps and ladders required during construction.
 - 1.16 Adequate access for off-loading equipment dollies upon delivery at site.
 - 1.17 All necessary sleeves and sleeve installation, as required by elevator contractor.
 - 1.18 Building exit graphics at each floor as required by local building code.
 - 1.19 Permanent lighting in elevator lobbies in conformance to code.
 - 1.20 Safety beam 5000 pound capacity centered over rails at top of hoistway. May require removal later for legal overhead.
 - 1.21 Material staging and storage area 20 foot by 20 foot adjacent to hoistway (based on three stop standard elevator) with wheeled dolly access. Coordinate with elevator contractor for increased stops and large capacity. Provide protection from weather and water to keep equipment dry.

2. PITS

- 2.1 Provide a drain or sump pump if required by code. Do not connect directly to sewer. Coordinate provision and location with elevator contractor.
- 2.2 Pit screens required where cars are adjacent. Screens extend 6'-0" above pit floor and run full hoistway depth. If pit ladder is mounted at the screen location, the screen must extend 6 feet above the floor landing level at the ladder location and 2 feet away from the side of ladder.
- 2.3 Seal pit against ground water entry. Pit floor must be smooth and dry.
- 2.4 Blockouts for piping and wiring, pit pockets and jack blockout in pit floor. If required, sealing and reparation of these blockouts. If pit pockets are required they shall be formed in concrete and waterproofed.
- 2.5 Coordinate location of steel pit ladder.
- 2.6 Pit lighting, with guard, to obtain 100 lx (10fc) at the pit floor. Mount approximately 18" above pit floor. Coordinate with elevator contractor.
- 2.7 GFCI duplex 120-volt, 15 amp outlet adjacent to the light switch.

3. SPRINKLERS, HEAT AND SMOKE DETECTORS, AND SHUNT TRIP DEVICES

- 3.1 Sprinkler systems conforming to building and fire codes are permitted in hoistways and machine rooms (2.8.2.3).
- 3.2 Keep risers and returns outside these spaces (sprinklers cannot be run through these areas, but must be terminated in the area). Branch lines may serve only one floor. Provide guards (2.8.2.3.1).
- 3.3 Provide shunt trip device, outside machine room, with manual reset and independent of elevator control, as required by code (2.8.2.3.2).
- 3.4 If battery lowering, provide a normally closed contact to shutoff battery power prior to shunt trip activation.
- 3.5 If sprinklers provided, all electrical equipment located less than 48 inches above pit floor shall have NEMA 4 enclosure and be NFPA 70 compliant.
- 3.6 Sprinklers located within 2'-0" of the pit floor are not required to comply with shunt trip operation (2.8.2.3.1).
- 3.7 Smoke detectors may not be used to activate sprinklers or disconnect the main line power (2.8.2.3.3).
- 3.8 Arrange to service heat and smoke detectors without entering the hoistway (2.8.2.1.3)
- 3.9 Locate heat and smoke detectors within 2'-0" of sprinkler head if shunt trip device is used to shut down power prior to sprinkler (NFPA 3-9.4.2).

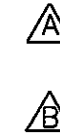
4. ELECTRICAL

- 4.1 Flexible conduit to elevator equipment is prohibited by code. Provide hard piped with rigid conduit or EMT.
- 4.2.3 pole lockable fused main line disconnect switch for each elevator.
- 4.2.1 Power supply feeders, including ground wire, from the disconnect switch to each elevator controller.
- 4.2.2 If standby power, provide one normally open contact that closes and one normally closed contact that opens, on activation by the automatic transfer switch. Wire to elevator controller.
- 4.2.3 If battery lowering specified, provide auxiliary disconnect switch contacts that allow termination of battery power at same time as mainline power.
- 4.3 Separate 110V-10-20 amp circuit with lockable disconnect to elevator controller for elevator lighting.
- 4.4 Temporary power of 220v, 30a, minimum required for construction tools.
- 4.5 Lights, light switches, and GFCI convenience outlets in pit and machine room.

5. MACHINE ROOM

- 5.1 Properly sized machine room with legal access and code legal equipment working clearances. Machine room to have no less than 7'-00" clear in location below all equipment/piping as required by code.
- 5.2 Minimum 3'-0"(3'-6" Preferred) by 6'-8" self-closing, self-locking machine room door. Do not install door until pump unit has been placed in the machine room.
- 5.3 Sign mounted in the machine room indicating strength of the machine room floor per code. (2.1.3.3)
- 5.4 Machine room lights, with guards, to obtain 200 lx (19fc), at the machine room floor.
- 5.5 Light switch adjacent to strike side of machine room door.
- 5.6 GFCI duplex 120-volt, 15 amp outlet adjacent to the light switch.
- 5.7 **Temperature and Humidity.** Machinery spaces, machine rooms, control spaces, and control rooms shall be provided with natural or mechanical means to keep the ambient air temperature between 20° Celsius (68° Fahrenheit) and 35° Celsius (95° Fahrenheit) and non-condensing humidity up to 95%. The temperature and humidity range shall be permanently posted in the machinery space.
- 5.8 Dedicated hot phone line in elevator machine room with 24-hour emergency service to answer calls from the elevator cab.
- 5.9 Fire life safety speaker circuit, if required by code.
- 5.10 Fire phone Jack circuit if required by code.
- 5.11 Only Elevator related equipment is allowed in the machine room including piping and drains. Z

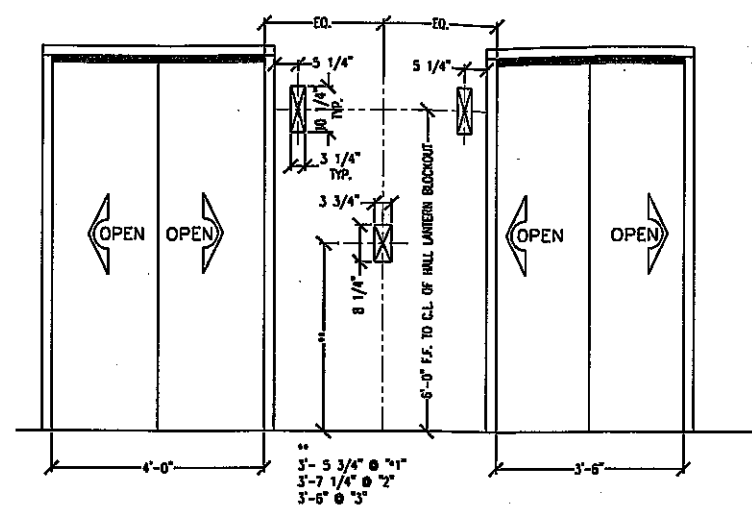
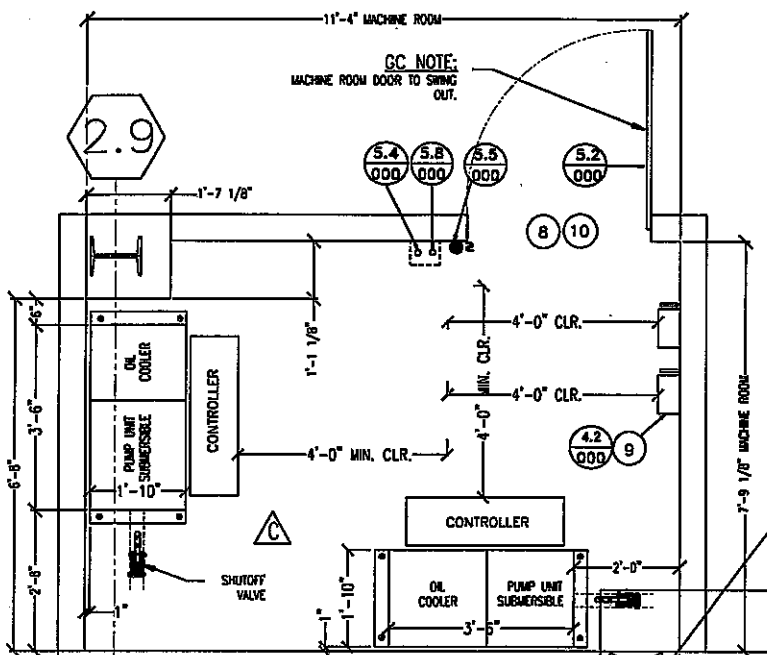
NOTE: (0.0.0.0) : ASME A17.1



VERIFIED							
POWER SUPPLY: 480 V/3 PHASE/ 60 HZ, 50HP FULL LOAD AMPS: 62 FOR ELE.#1							
POWER SUPPLY: 480 V/3 PHASE/ 60 HZ, 40HP FULL LOAD AMPS: 51 FOR ELE.#2, #3							
CAB INTERIOR PANELS FINISH: <u>ST. STL. SWL</u>							
CAB INTERIOR FLOOR (BY OTHERS) RECESS: <u>3/4"</u>							
FLR	ELEV.	WALL			FINISH		
		TYPE	THICKNESS	SILL	DOOR	FRAME	PAINT COLOR
	*1	DRY WALL	24"	NICKEL SILVER		ST. STL. #4	N/A
	2	DRY WALL	24"	NICKEL SILVER		ST. STL. #4	N/A
	3	DRY WALL	24"	NICKEL SILVER		ST. STL. #4	N/A
	*1	DRY WALL	14"	NICKEL SILVER		ST. STL. #4	N/A
	2	DRY WALL	14"	NICKEL SILVER		ST. STL. #4	N/A
VERIFY FLOOR DESIGNATION, IF DIFFERENT THAN ABOVE:							
MAIN FIRE RECALL FLOOR: <u>"1"</u>							
ALTERNATE FIRE RECALL FLOOR (IF REQ'D): <u>"2"</u>							

REV.	DATE	BY	DESCRIPTION
C			
B	04/02/09	CRC	CORRECTED WALL PANELS FINISH
A	2/19/09	MC	DWG REV. FINAL.
FINAL DRAWING			
WHEN THE EQUIPMENT HAS BEEN RELEASED FOR FABRICATION, ANY CHANGES MADE AFTER APPROVAL WILL RESULT IN ADDITIONAL COST AND COMPLETION TIME.			<input type="checkbox"/> FOR APPROVAL <input type="checkbox"/> REVISED FOR APPROVAL <input checked="" type="checkbox"/> FINAL DISTRIBUTION <input type="checkbox"/> REVISED FINAL DISTRIBUTION
PROJECT NAME	COLLEGE OF SAN MATEO		
ADDRESS	1700 W. HILLSDALE BLVD. SAN MATEO, CA 94402		
CONTRACTOR:	MC CARTHY SF.		
ARCHITECT	LPA		
DRAWN	MC	DATE	05/15/08
CHECK	JC	DATE	
DWG TITLE	RELATED WORK AND CLARIFICATION		
LOCATION NO.	12212SH	ELE#	ALL
IDESA NO.			
DWG. NO.	12212SH-000	DO NOT SCALE	



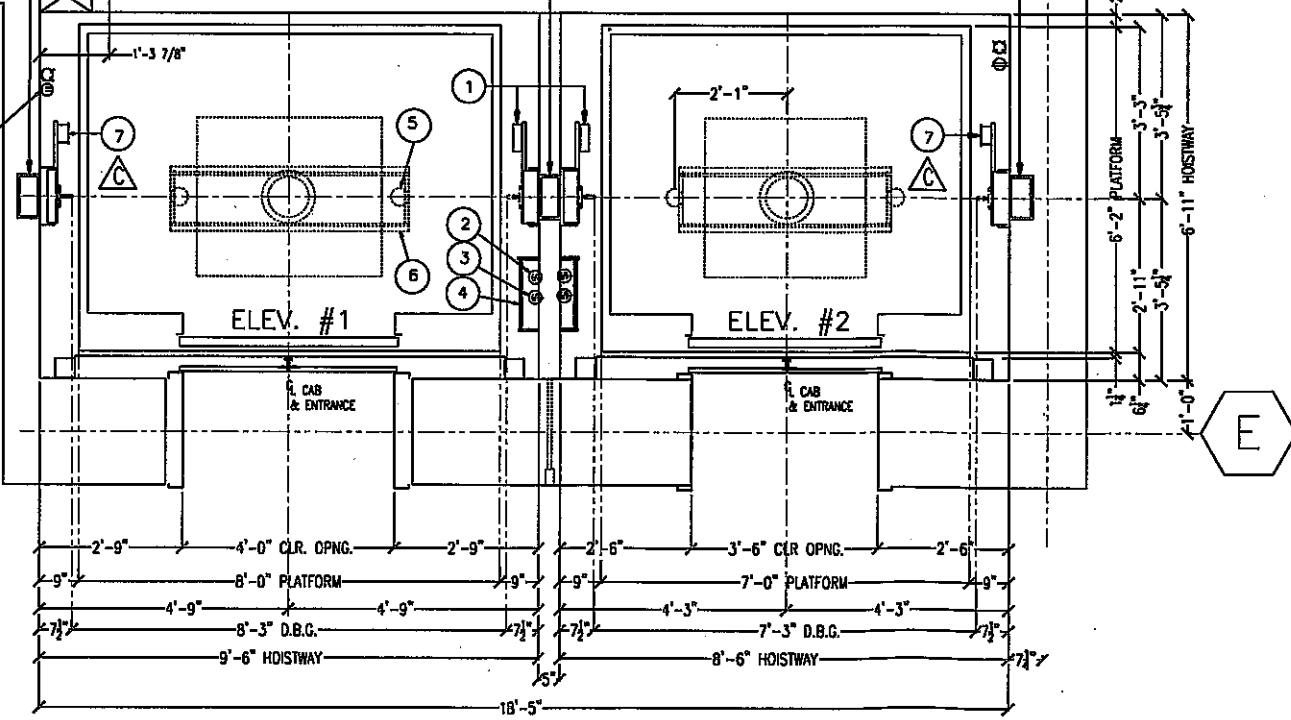


MACHINE ROOM LAYOUT

- LOCATION: ADJACENT @ FLR #1
- Ⓢ MACHINE ROOM FLOOR TO BE 3,000 P.S.I. CONCRETE. LIGHT SWITCH, LIGHT & CONV. OUTLET. (BY OTHERS)
 - Ⓢ DISCONNECT & FUSING FOR 50HP(ELEV.#1) 40HP(ELEV.#2) MOTOR. (BY OTHERS)
 - Ⓢ DO NOT USE ALUMINUM WIRE FOR INTERCONNECT FROM DISCONNECT SWITCH TO ELEVATOR CONTROLLER.
 - NOTE: MACHINE ROOM TO HAVE 7'-0" MIN. CLR. OVERHEAD.
 - NOTE: ONLY ELEVATOR RELATED EQUIPMENT ALLOWED IN THE HOISTWAY AND MACHINE ROOM, INCLUDING PIPES AND DUCTS.

HOISTWAY PLAN VIEW

- ① GUTTER & LIMIT SWITCHES
- ② LIGHT SWITCH-18" ABOVE LOWEST LANDING (BY OTHERS)
- ③ PIT STOP SWITCH
- ④ PIT LADDER
- ⑤ SPRING BUFFERS LOCATED ON PIT FLOOR
- ⑥ 3'-0" SQ. BLOCKOUT IN PIT FLOOR FOR JACK UNIT.
- ⑦ TAPE SELECTOR



#1 SPECIFICATION & DATA		#2 SPECIFICATION & DATA	
<input checked="" type="checkbox"/> DSA <input type="checkbox"/> OSHPD <input type="checkbox"/> CALCULATION <input type="checkbox"/> CITY OF LA		<input checked="" type="checkbox"/> DSA <input type="checkbox"/> OSHPD <input type="checkbox"/> CALCULATION <input type="checkbox"/> CITY OF LA	
GENERAL	SERIES: IDH-C-H1 SERVICE: PASSENGER CONTROL TYPE: DUPLEX CAPACITY (LBS.): 4000 SPEED (FPM): 125 TRAVEL: 28'-0" CAB TYPE: CUSTOM OPENINGS: 3FOR DOOR OPERATOR: GAL MOVFR PLATFORM THICKNESS: 5 5/8" CAB FLOOR THICKNESS: 3/4"	GENERAL	SERIES: IDH-C-H1 SERVICE: PASSENGER CONTROL TYPE: DUPLEX CAPACITY (LBS.): 3500 SPEED (FPM): 125 TRAVEL: 28'-0" CAB TYPE: CUSTOM OPENINGS: 3FOR DOOR OPERATOR: GAL MOVFR PLATFORM THICKNESS: 5 5/8" CAB FLOOR THICKNESS: 3/4"
WEIGHTS (LBS.)	HWY. DOOR: 245 CAB DOOR: 209 PISTON: 653 CAR WEIGHT: 3500 GROSS WEIGHT: 7500 WEIGHT ALLOWANCE: --- VER. LOAD IMPOSED ON BLDG.: 11330	WEIGHTS (LBS.)	HWY. DOOR: 226 CAB DOOR: 192 PISTON: 498 CAR WEIGHT: 3100 GROSS WEIGHT: 6600 WEIGHT ALLOWANCE: --- VER. LOAD IMPOSED ON BLDG.: 10139
JACK	PISTON: LENGTH 29'-11 5/8" AREA (sq. in.): 23.22 O.D.: 5.4375" WALL THK.: 0.312" NUMBER OF SECTIONS: 2 CYLINDER: LENGTH 29'-1 7/8" O.D.: 8.625" WALL THK.: 0.322" TOP OVER TRAVEL: 6" BOTTOM OVER TRAVEL: 11"	JACK	PISTON: LENGTH 29'-11 5/8" AREA (sq. in.): 19.635 O.D.: 5" WALL THK.: 0.303" NUMBER OF SECTIONS: 2 CYLINDER: LENGTH 29'-1 7/8" O.D.: 8.625" WALL THK.: 0.322" TOP OVER TRAVEL: 6" BOTTOM OVER TRAVEL: 11"
HYDRO EQUIPMENT	POWER SUPPLY: 480/3/60 MOTOR STARTER: SOLID STATE PUMP: A4PIC-236 G.P.M.: 154 MOTOR HP: 50 M.R. HEAT RELEASE (BTU/HR): 19100 VALVE TYPE: UC4(M)-STD FEED PIPE DIA. (SCH.80): 2.00" MIN. PRESSURE (PSI): 165 WORKING PRESSURE (PSI): 386	HYDRO EQUIPMENT	POWER SUPPLY: 480/3/60 MOTOR STARTER: SOLID STATE PUMP: A4PIC-217 G.P.M.: 127.5 MOTOR HP: 40 M.R. HEAT RELEASE (BTU/HR): 15280 VALVE TYPE: UC4(M)-F2 FEED PIPE DIA. (SCH.80): 2.00" MIN. PRESSURE (PSI): 171 WORKING PRESSURE (PSI): 398
BUFFER	TYPE: SPRING STROKE: 4" RATING: 12000 REACTION (LBF.): 9016	BUFFER	TYPE: SPRING STROKE: 4" RATING: 8000 REACTION (LBF.): 7934
RAIL	CAR GUIDE RAILS: 15# CAR GUIDE SHOES: 815RG NON-SEISMIC: R1, R2 SEISMIC: R1 1806 LBF, R2 903 LBF MAX. RAIL BRKT SPAN: 9'-00"	RAIL	CAR GUIDE RAILS: 15# CAR GUIDE SHOES: 815RG NON-SEISMIC: R1, R2 SEISMIC: R1 1596 LBF, R2 798 LBF MAX. RAIL BRKT SPAN: 9'-00"



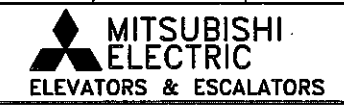
REV.	DATE	BY	DESCRIPTION
C	04/02/09	CRC	CORRECTED FEED PIA DIA.
B	3/5/09	MC	PISTON SECTION CHANGED.
A	2/19/09	MC	FINAL.

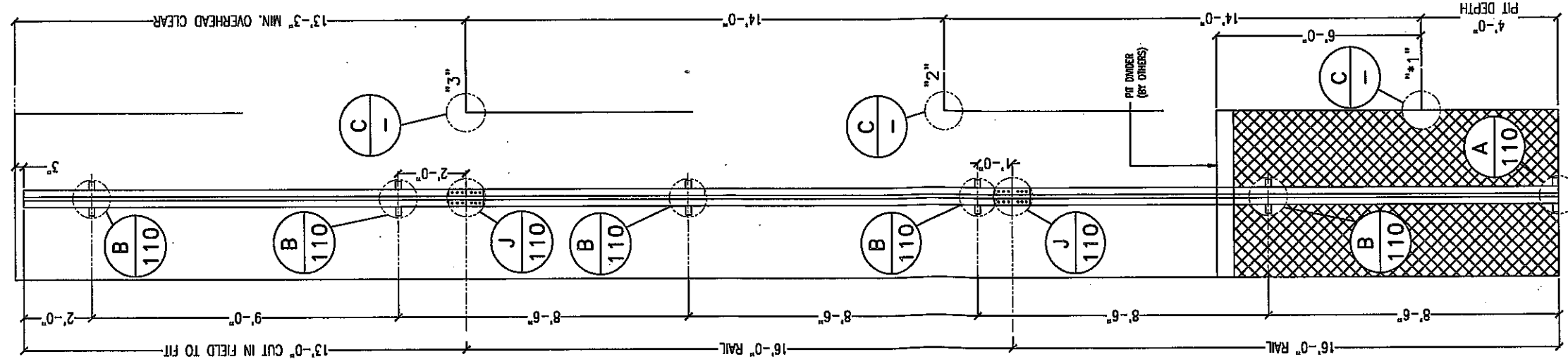
FINAL DRAWING

WHEN THE EQUIPMENT HAS BEEN RELEASED FOR FABRICATION, ANY CHANGES MADE AFTER APPROVAL WILL RESULT IN ADDITIONAL COST AND COMPLETION TIME.

FOR APPROVAL
 REVISED FOR APPROVAL
 FINAL DISTRIBUTION
 REVISED FINAL DISTRIBUTION

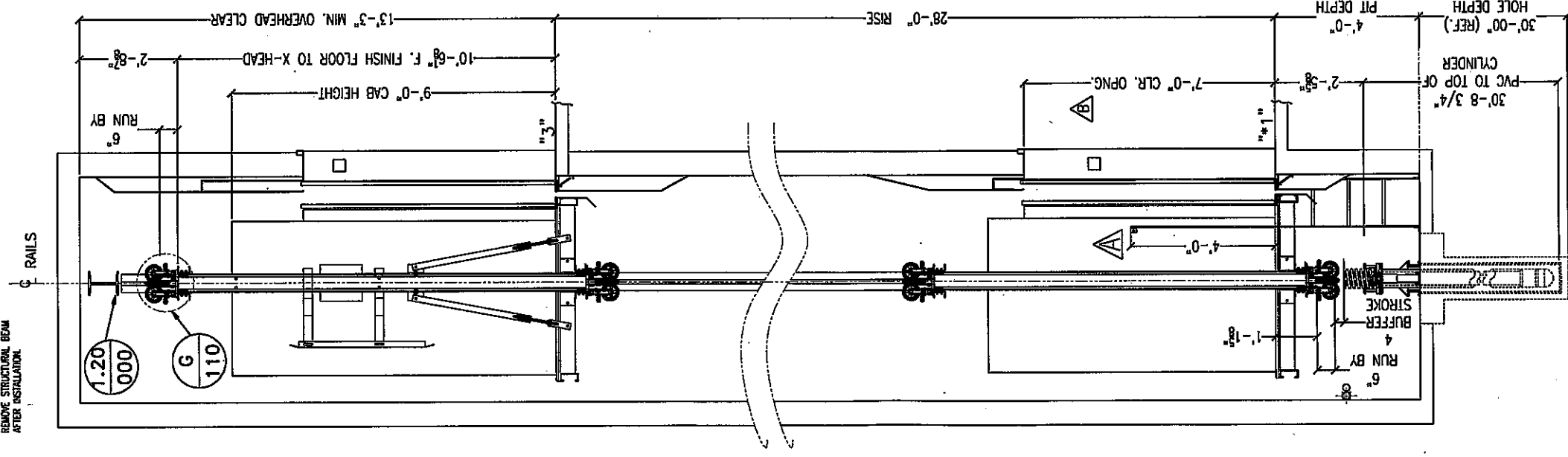
PROJECT NAME	COLLEGE OF SAN MATEO		
ADDRESS	1700 W. HILLSDALE BLVD. SAN MATEO, CA 94402		
CONTRACTOR:	MC CARTHY SF.		
ARCHITECT	LPA		
DRAWN	MC	DATE	05/15/08
CHECK	JC	DATE	
DWG TITLE	HOISTWAY LAYOUT		
LOCATION NO.	12212SH	ELEV#	#1, #2
IDESA NO.			
DWG. NO.	12212SH-101	DO NOT SCALE	





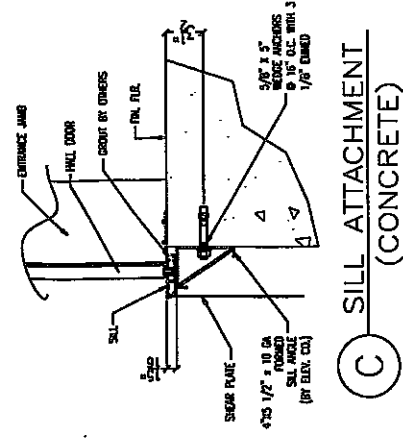
RAIL SCHEDULE

NOTE: REMOVE STRUCTURAL BEAM AFTER INSTALLATION.



HOISTWAY SECTION

NOTE: SAFE CLEARANCE BETWEEN BOTTOM OF PLUNGER & BOTTOM OF CYLINDER = 1"



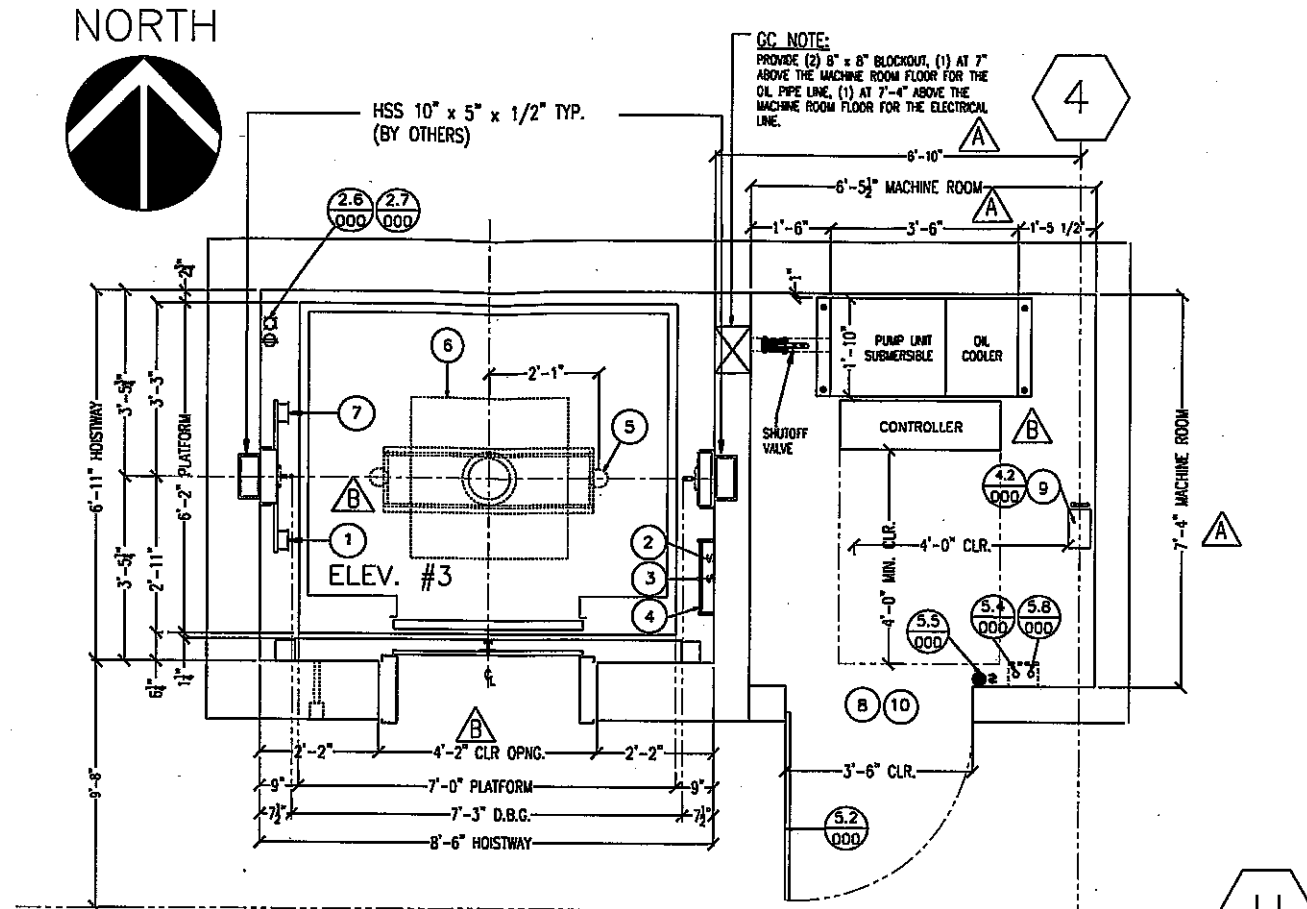
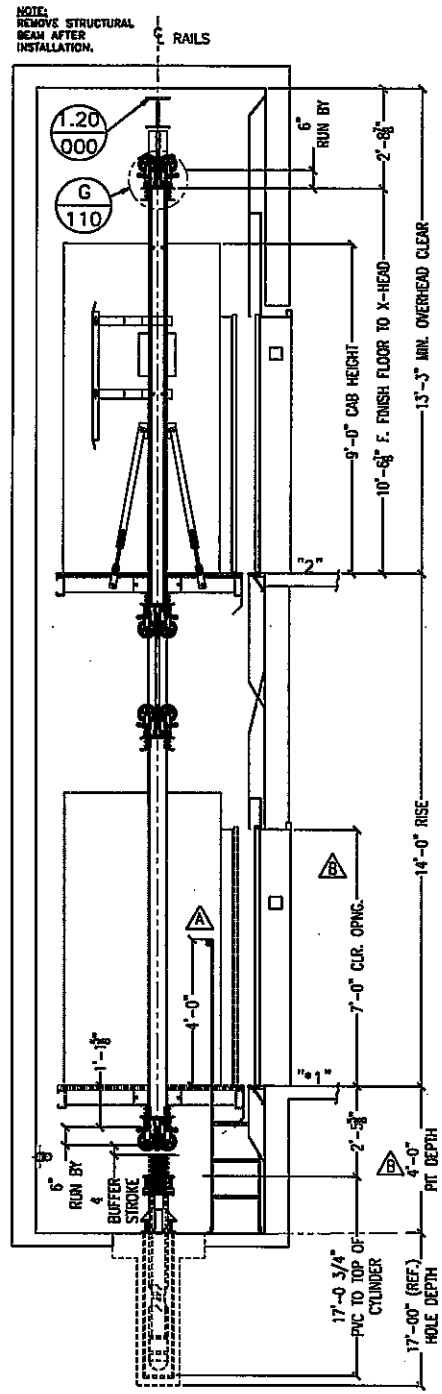
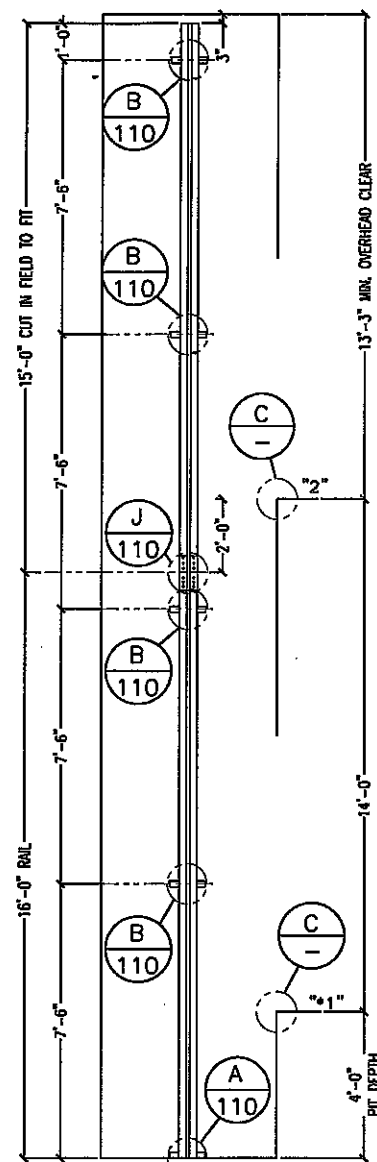
(C) SILL ATTACHMENT (CONCRETE)

REV.	DATE	BY	DESCRIPTION
C			
B	02/04/09	CRC	DELETED ROUGH OPNG.
A	2/19/09	MC	FINAL

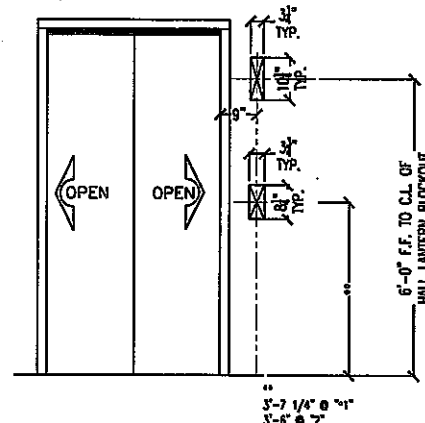
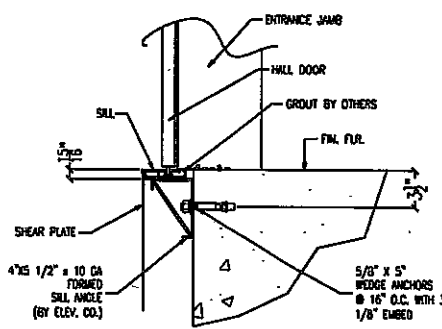
FINAL DRAWING		DATE	
DATE	BY	DATE	BY
05/15/08	MC	05/15/08	JC

PROJECT NAME		COLLEGE OF SAN MATEO	
ADDRESS	1700 W. HILLSDALE BLVD.	SAN MATEO, CA 94402	
CONTRACTOR:	MC CARTHY SF.		
ARCHITECT	LPA		
DRAWN	MC	DATE	05/15/08
CHECK	JC	DATE	
DWG TITLE	HOISTWAY SECTION		
LOCATION NO.	12212SH	ELEM	#1.#2
DESA NO.			
DWG. NO.	12212SH-102	DO NOT SCALE	

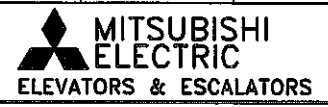
MITSUBISHI ELECTRIC	
ELEVATORS & ESCALATORS	

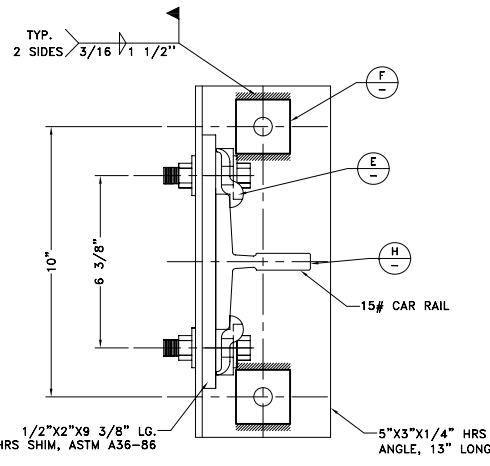


- HOISTWAY PLAN VIEW**
- ① GUTTER & LIMIT SWITCHES
 - ② LIGHT SWITCH-18" ABOVE LOWEST LANDING (BY OTHERS)
 - ③ PIT STOP SWITCH
 - ④ PIT LADDER
 - ⑤ SPRING BUFFERS LOCATED ON PIT FLOOR
 - ⑥ 3'-0" SO. BLOCKOUT IN PIT FLOOR FOR JACK UNIT.
 - ⑦ TAPE SELECTOR
- MACHINE ROOM LAYOUT**
- ⓐ MACHINE ROOM FLOOR TO BE 3,000 P.S.I. CONCRETE. LIGHT SWITCH, LIGHT & CONV. OUTLET. (BY OTHERS)
 - ⓑ DISCONNECT & FUSING FOR 40HP MOTOR. (BY OTHERS)
 - ⓓ DO NOT USE ALUMINUM WIRE FOR INTERCONNECT FROM DISCONNECT SWITCH TO ELEVATOR CONTROLLER.
- NOTE: MACHINE ROOM TO HAVE 7'-0" MIN. CLR. OVERHEAD.
- NOTE: ONLY ELEVATOR RELATED EQUIPMENT ALLOWED IN THE HOISTWAY AND MACHINE ROOM, INCLUDING PIPES AND DUCTS.

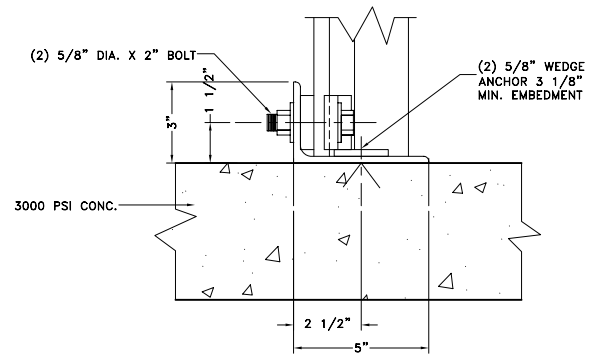


SPECIFICATION & DATA			
<input checked="" type="checkbox"/> DSA <input type="checkbox"/> OSHPD <input type="checkbox"/> CALCULATION <input type="checkbox"/> CITY OF LA			
GENERAL	SERIES: IDH-C-H1 SERVICE: PASSENGER CONTROL TYPE: SIMPLEX CAPACITY (LBS.): 3500 SPEED (FPM): 125 TRAVEL: 14'-0" CAB TYPE: 500 OPENINGS: 2FOR DOOR OPERATOR: GAL MOVFR PLATFORM THICKNESS: 5 5/8" CAB FLOOR THICKNESS: 3/4"		
WEIGHTS (LBS.)	HWY. DOOR: 226 CAB DOOR: 192 PISTON: 205 CAR WEIGHT: 3100 GROSS WEIGHT: 6600 WEIGHT ALLOWANCE: --- VER. LOAD IMPOSED ON BLDG.: 12360		
JACK	PISTON: LENGTH 16'-1 1/2", AREA (sq. in.) 23.76, O.D. 5", WALL THK. 0.25" NUMBER OF SECTIONS: 1 CYLINDER: LENGTH 15'-8 7/8", O.D. 8.625", WALL THK. 0.322" TOP OVER TRAVEL: 6" BOTTOM OVER TRAVEL: 11"		
HYDRO EQUIPMENT	POWER SUPPLY: 480/3/60 MOTOR STARTER: SOLID STATE PUMP: A4PIC-217 G.P.M.: 127.5 MOTOR HP: 40 M.R. HEAT RELEASE (BTU/HR): 15280 VALVE TYPE: UC4(M)-E2 FEED PIPE DIA. (SCH.80): 2" MIN. PRESSURE (PSI): 168 WORKING PRESSURE (PSI): 385		
BUFFER	TYPE: SPRING STROKE: 4" RATING: 8000 REACTION (LBF.): 7934		
RAIL	CAR GUIDE RAILS: 15# CAR GUIDE SHOES: 815RG RAIL: NON-SEISMIC R1, SEISMIC R1 1552 LBF, R2 776 LBF MAX. RAIL BRKT SPAN: 8'-00"		
<small>OIL HEATER, OIL COOLER, LOW OIL SW, SAFE OIL, ISOLATION PMS, 3 SWITCHES PMS, PIT SHUTOFF VALVES, RUPTURE VALVE, BATTERY LOWERING, DOOR MUXING OPERATION, SECURITY OPERATION.</small>			
REV.	DATE BY DESCRIPTION		
C			
B	04/02/09	CRC	ADDED NOTES
A	2/19/09	MC	DWG REV. FINAL.
FINAL DRAWING		<input type="checkbox"/> FOR APPROVAL <input checked="" type="checkbox"/> REVISED FOR APPROVAL	
<small>WHEN THE EQUIPMENT HAS BEEN RELEASED FOR FABRICATION, ANY CHANGES MADE AFTER APPROVAL WILL RESULT IN ADDITIONAL COST AND COMPLETION TIME.</small>		<input type="checkbox"/> FINAL DISTRIBUTION <input checked="" type="checkbox"/> REVISED FINAL DISTRIBUTION	
PROJECT NAME	COLLEGE OF SAN MATEO		
ADDRESS	1700 W. HILLSDALE BLVD. SAN MATEO, CA 94402		
CONTRACTOR:	MC CARTHY SF.		
ARCHITECT:	LPA		
DRAWN:	MC	DATE:	05/15/08
CHECK:	JC	DATE:	
DWG TITLE:	HOISTWAY LAYOUT AND SECTION		
LOCATION NO.:	12212SH	ELE#:	#3
IDESA NO.:			
DWG. NO.:	12212SH-103	DO NOT SCALE	

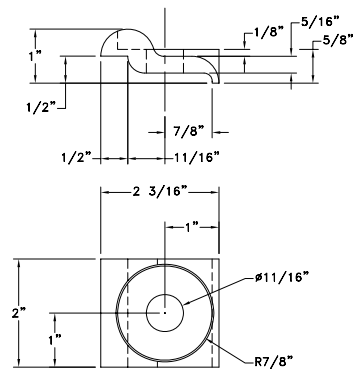




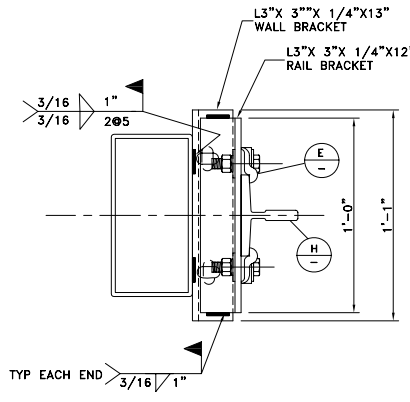
A RAIL BRACKET AT PIT FLOOR



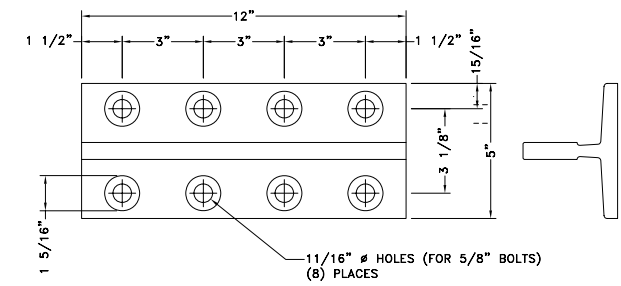
E RAIL CLIP-15# FORGED STEEL-ASTM A668 CLASS D (NO SPRINGS UTILIZED)



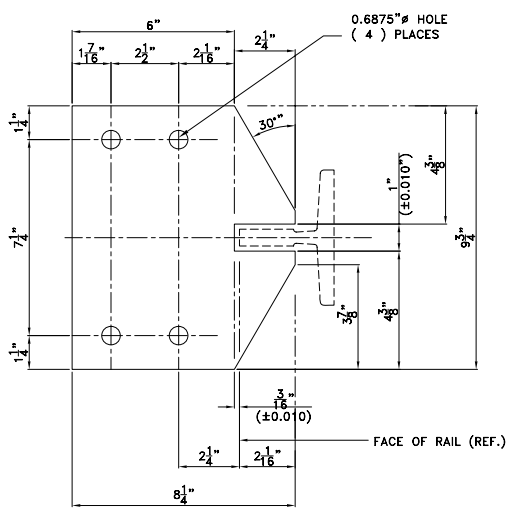
B CAR RAIL BRACKET (TUBE STEELS)



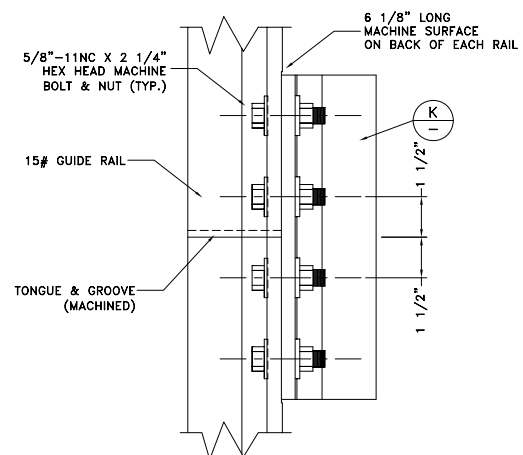
N PUMP ANCHORAGE DETAIL (SUBMERSIBLE)



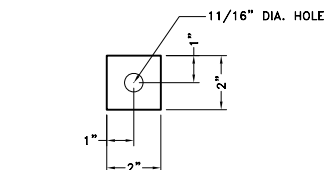
K SPLICE PLATE-15# RAIL "T" SECTION - 15 LBS RAIL



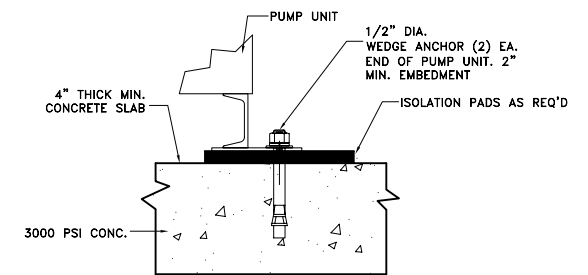
G RAIL RETAINER PLATE FOR GUIDE SHOE 815RG
MAT'L: 3/8" THICK H.R.S. ASTM A36-86 (SEE NOTE 4)



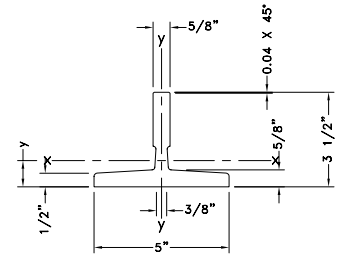
J RAIL SPLICE CONNECTION DETAIL



F WELD WASHER 1/4" H.R.S. A.S.T.M. A36-86



P PUMP ATTACHMENT AT PIT FLOOR



H 15# RAIL PROPERTIES

RAIL TYPE	AREA	AXIS X-X				AXIS Y-Y			
		DISTANCE TO BACK OF FLANGE	MOMENT OF INERTIA	SECTION MODULUS	RADIUS OF GYRATION	MOMENT OF INERTIA	SECTION MODULUS	RADIUS OF GYRATION	TORSIONAL STRENGTH
T-160	4.41 ²	.97	4.78 ⁴	1.89 ³	1.04	5.51 ⁴	2.21 ³	1.12	.67

NOTE:

1. WEDGE ANCHORS IN CONCRETE WILL BE HILTI KWIK BOLT TZ INSTALLED PER ICC ESR-1917 EXCEPT AS OTHERWISE SPECIFIED.
2. WELDER QUALIFICATION REQUIREMENTS, WELDING PROCEDURES, AND WELDING ELECTRODES ARE TO CONFORM TO THE 2001 C.B.C. SECTION 2205A.10, AND ALL WELDS SHALL BE INSPECTED IN ACCORDANCE WITH APPLICABLE REQUIREMENTS OF THE 2001 C.B.C. CHAPTER 22A, SECTION 2231A.5.
3. NO SLOTTED HOLES ARE ALLOWED IN THE FINAL POSITION AFTER INSTALLATION IS COMPLETE.
4. THE RETAINER PLATE (SEE DETAIL G) IS BOLTED AT TOP AND BOTTOM OF THE STILES, EACH SIDE OF CAR, BETWEEN THE GUIDE SHOES & THE GUIDE SHOE MTG. CHANNEL. THIS IS TO PREVENT THE CAR FROM DISENGAGING FROM THE GUIDE RAILS DURING A SEISMIC EVENT, SHOULD THE GUIDE SHOES FAIL.

DRAWING INDEX

1. 12212 SH-101: HOISTWAY LAYOUT (ELE#1, #2)
2. 12212 SH-102: HOISTWAY SECTION (ELE#1, #2)
3. 12212 SH-103: HOISTWAY LAYOUT & SECTION (ELE#3)
4. 12212 SH-110: RAIL BRACKETS AND STRUCTURAL DETAILS

MATERIAL SPECIFICATIONS

GUIDE RAILS:	ASTM A36-86
BOLTS:	ASTM A307
RAIL CLIPS:	ASTM A668, CLASS D
STEEL:	ASTM A36-86

ALL CONCRETE ANCHOR BOLTS OF THE EXPANSION TYPE (LOADED IN EITHER PULLOUT OR SHEAR), SHALL HAVE 50% OF THE BOLTS (ALTERNATE BOLTS IN ANY GROUP ARRANGEMENT) PROOF TESTED IN TENSION AS SHOWN IN THE FOLLOWING TABLE. IF THERE ARE ANY FAILURES, THE IMMEDIATELY ADJACENT BOLTS MUST THEN ALSO BE TESTED.

TYPE OF MATERIALS	TYPE OF TEST PERFORMED	1/2" BOLT DIA.	5/8" BOLT DIA.	3/4" BOLT DIA.
HARD ROCK CONCRETE	DIRECT PULL-TENSION, LBS.	2000	2800	3700
HARD ROCK CONCRETE	TORQUE WRENCH-TORQUE, FT. LBS.	40	60	110

IT IS UNDERSTOOD THAT THE SIGNATURES OF THE ARCHITECT AND ENGINEERS OF RECORD FOR THIS PROJECT ARE AFFIXED TO THIS DRAWING AND/OR CALCULATIONS TO INDICATE THAT THE DRAWING AND/OR CALCULATIONS HAVE BEEN REVIEWED AND APPROVED ONLY FOR ANCHORAGES OF EQUIPMENT, GUIDE RAILS AND THEIR SUPPORTS TO SATISFY SEISMIC CONSIDERATIONS.

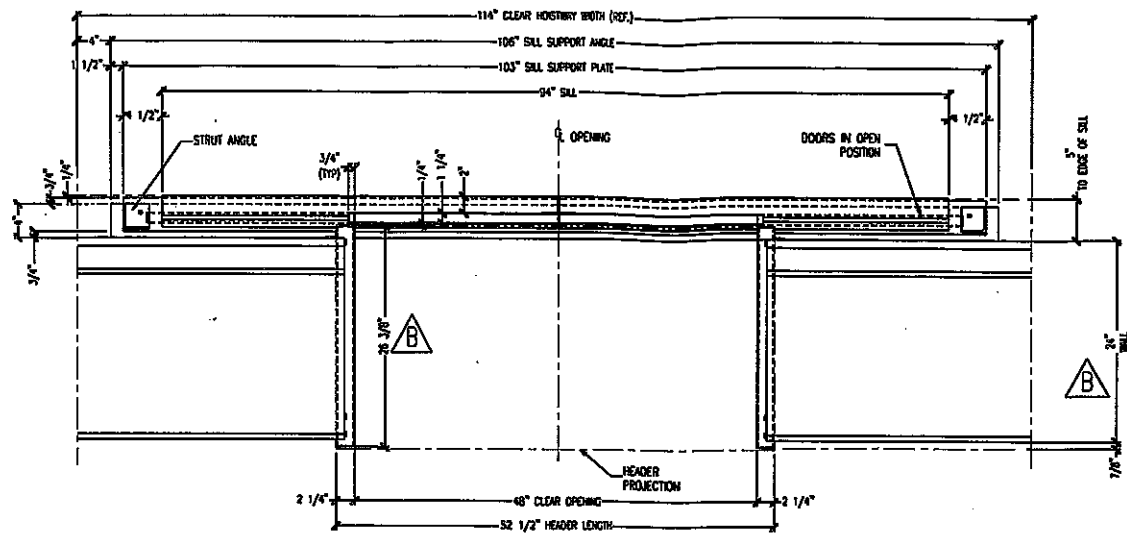
ARCHITECT _____ DATE _____
SIGNATURE _____
STRUCTURAL ENGINEER _____ DATE _____
SIGNATURE _____

REV.	DATE	BY	DESCRIPTION
C			
B			
A			

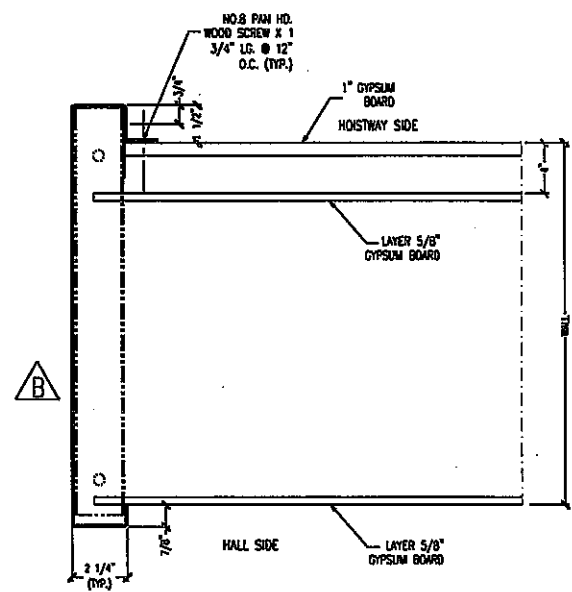
FINAL DRAWING
WHEN THE EQUIPMENT HAS BEEN RELEASED FOR FABRICATION, ANY CHANGES MADE AFTER APPROVAL WILL RESULT IN ADDITIONAL COST AND COMPLETION TIME.
 FOR APPROVAL
 REVISED FOR APPROVAL
 FINAL DISTRIBUTION
 REVISED FINAL DISTRIBUTION

PROJECT NAME	COLLEGE OF SAN MATEO		
ADDRESS	1700 W. HILLSDALE BLVD. SAN MATEO, CA 94402		
CONTRACTOR:	MC CARTHY SF.		
ARCHITECT	LPA		
DRAWN	JC	DATE	5/26/08
CHECK	DL	DATE	
DWG TITLE	RAIL BRKTS & STRUCTRL. DETAIL		
LOCATION NO.	12212 SH	ELE#	1,2,3
IDESA NO.			
DWG. NO.	12212 SH-110	DO NOT SCALE	

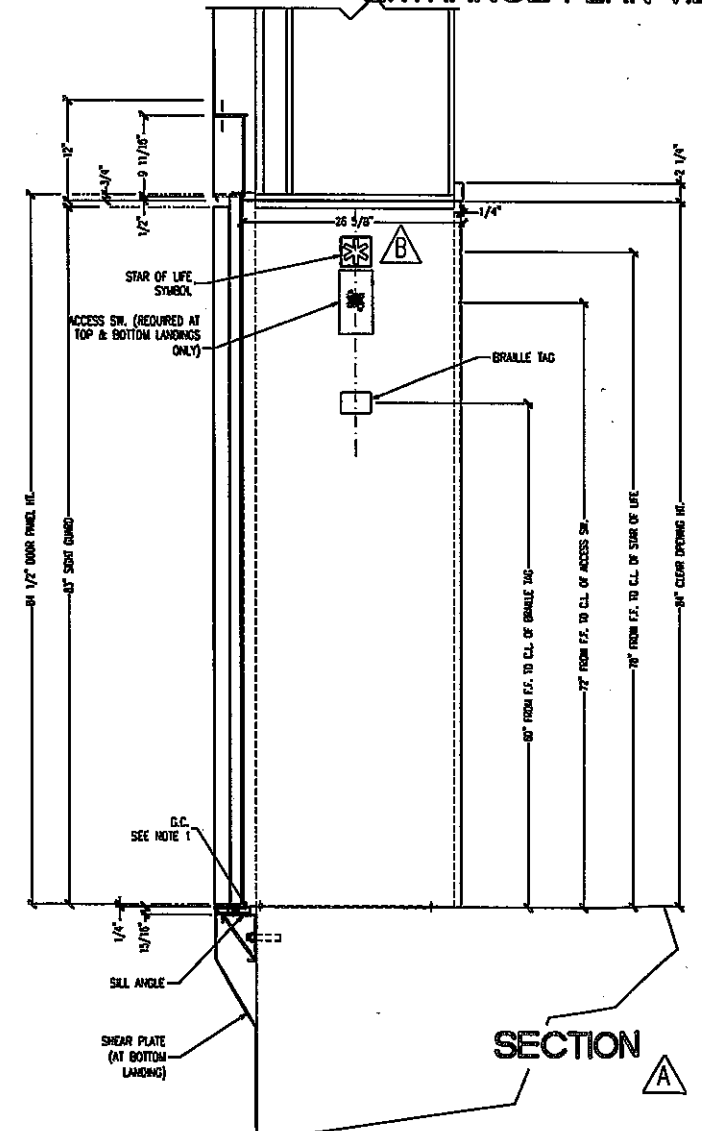




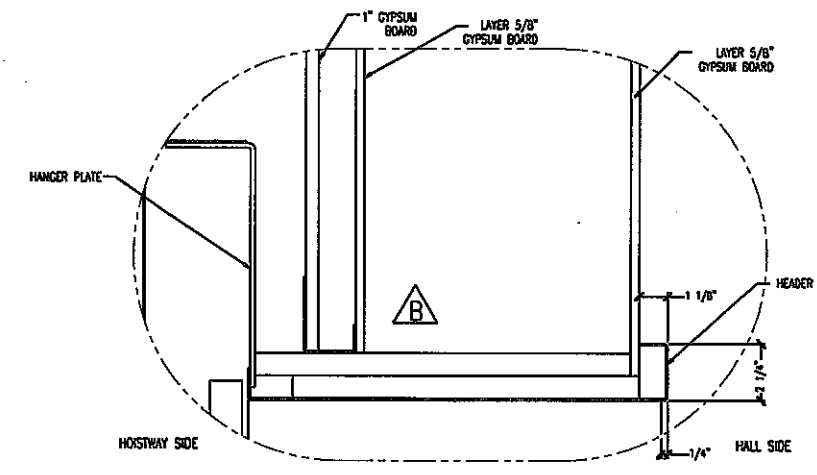
ENTRANCE PLAN VIEW



JAMB DETAIL



SECTION



HEADER DETAIL

- NOTES:
 1.-GROUTING AS REQUIRED BY OTHERS.
 2.-DOOR OPERATOR: GAL MOVFR
 3.- (3) ASSEMBLIES REQUIRED TOTAL.

REV.	DATE	BY	DESCRIPTION
C			
B	04/02/09	CRC	MADE FINAL
A	2/19/09	MC	DWG REV PER MRKUP

FINAL DRAWING

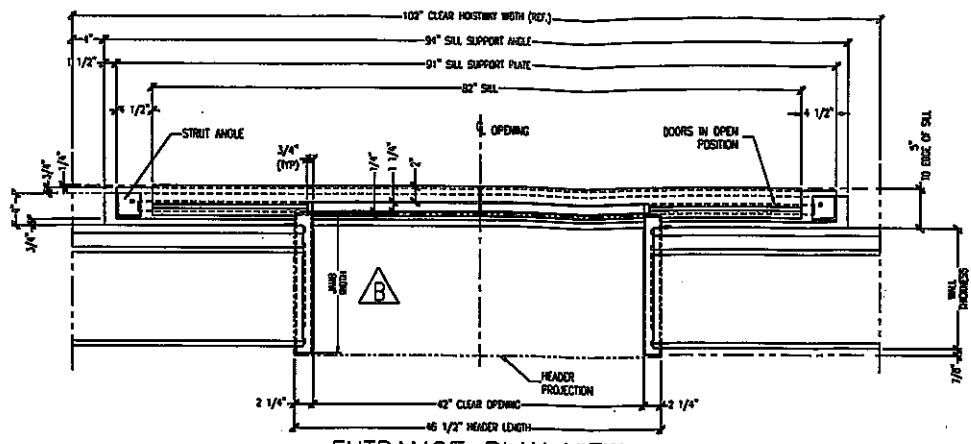
WHEN THE EQUIPMENT HAS BEEN RELEASED FOR FABRICATION, ANY CHANGES MADE AFTER APPROVAL WILL RESULT IN ADDITIONAL COST AND COMPLETION TIME.

FOR APPROVAL
 CHECKED FOR APPROVAL
 FINAL DISTRIBUTION
 CHECKED FINAL DISTRIBUTION

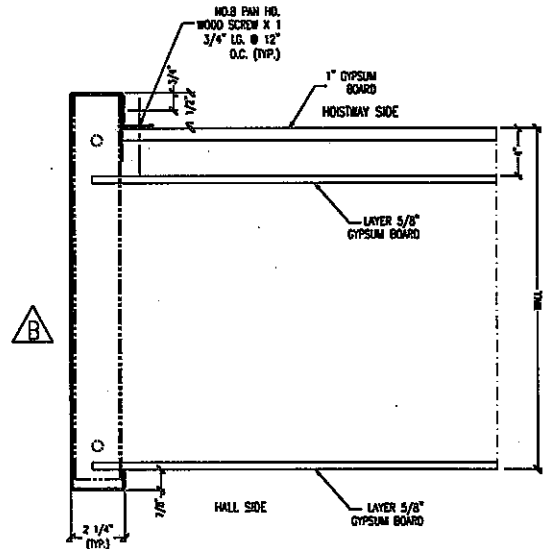
PROJECT NAME	COLLEGE OF SAN MATEO		
ADDRESS	1700 W. HILLSDALE BLVD. SAN MATEO, CA 94402		
CONTRACTOR:	MC CARTHY SF.		
ARCHITECT	LPA		
DRAWN	MC	DATE	05/15/08
CHECK	JC	DATE	
DWG TITLE	ENTRANCE		
LOCATION NO.	12212SH	ELE#	1
IDESA NO.			
DWG. NO.	12212SH-201	DO NOT SCALE	

FLR	WALL TYPE	WALL THKNESS	MATERIAL			QTY.	FRAME STRUCTURE
			SILL	DOOR	FRAME		
*1		24"				1	
2	DRY WALL	24"	NICKEL SILVER	ST. STL #4		1	BOLTED
3		24"				1	

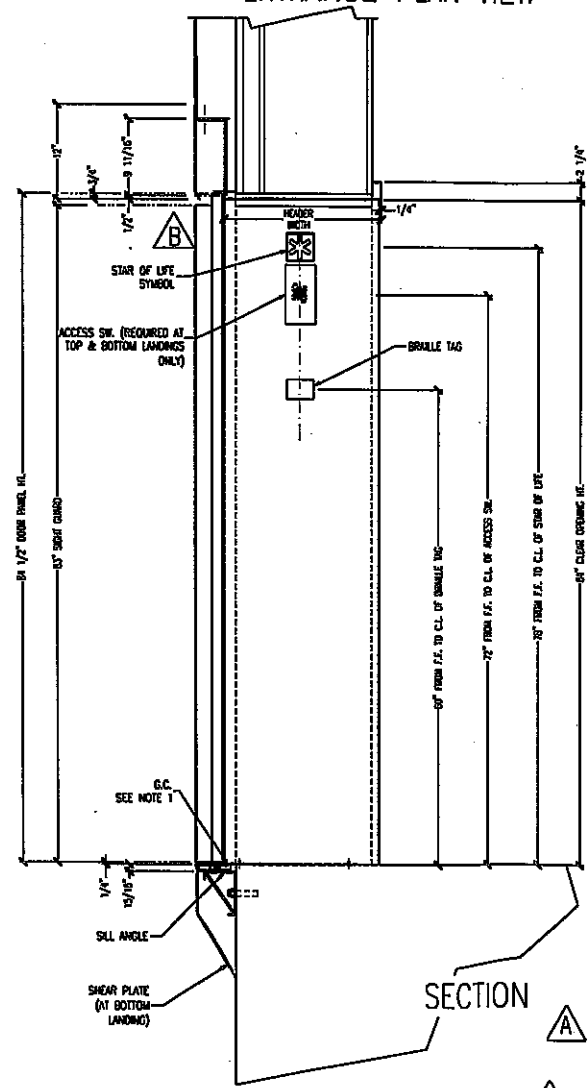




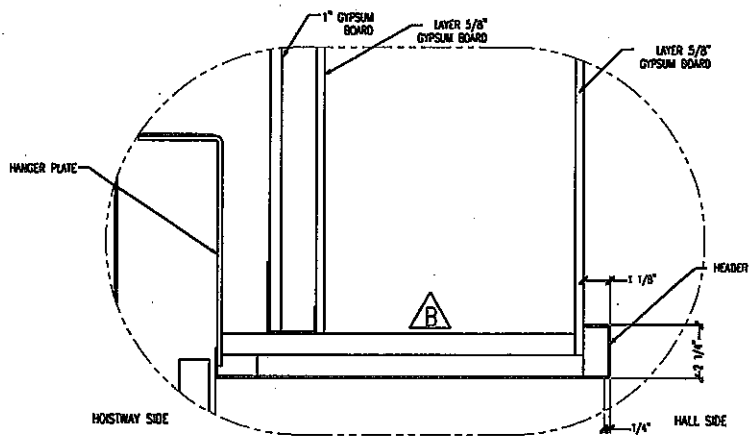
ENTRANCE PLAN VIEW



JAMB DETAIL



SECTION



HEADER DETAIL

ELEV.	FLR	WALL TYPE	WALL THKNSS	JAMB WIDTH	HEADER WIDTH	MATERIAL			QTY.	FRAME STRUCTURE
						SILL	DOOR	FRAME		
2	*1	DRY WALL	24"	26 3/8"	26 5/8"	NICKEL SILVER	ST. SIL. #4	1	BOLTED	
	2		24"	26 3/8"	26 5/8"					
	3		24"	26 3/8"	26 5/8"					
3	*1	DRY WALL	14"	16 3/8"	16 5/8"	NICKEL SILVER	ST. SIL. #4	1	BOLTED	
	2		14"	16 3/8"	16 5/8"					

NOTES:

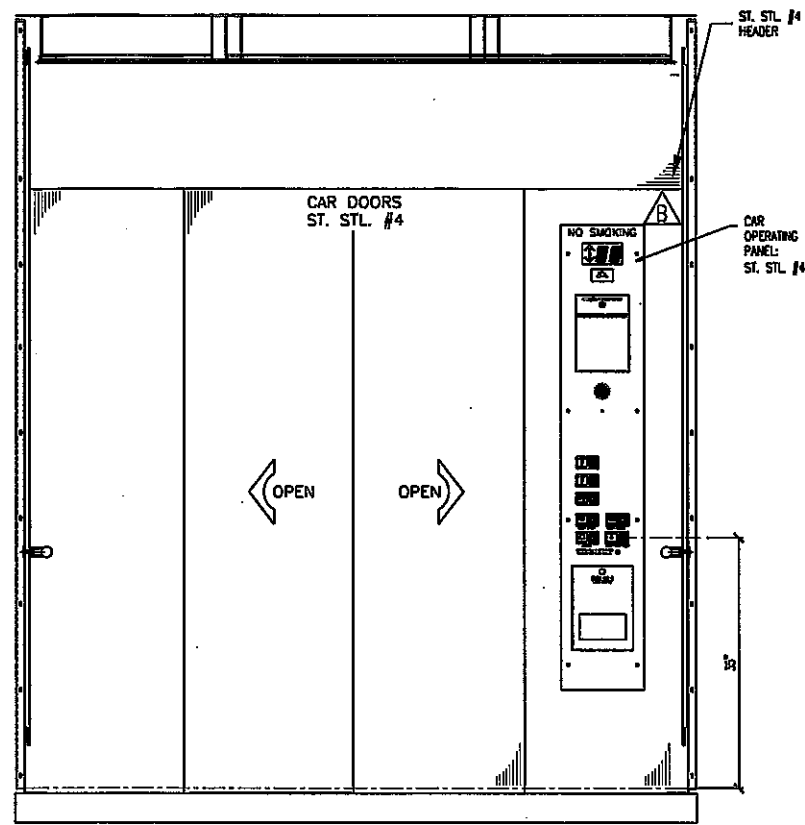
- 1.-GROUTING AS REQUIRED BY OTHERS.
- 2.-DOOR OPERATOR: GAL MOVR
- 3.- (5) ASSEMBLIES REQUIRED TOTAL.

REV.	DATE	BY	DESCRIPTION
C			
B	04/02/09	CRC	MADE FINAL
A	2/19/09	MC	DWG REV. FINAL.

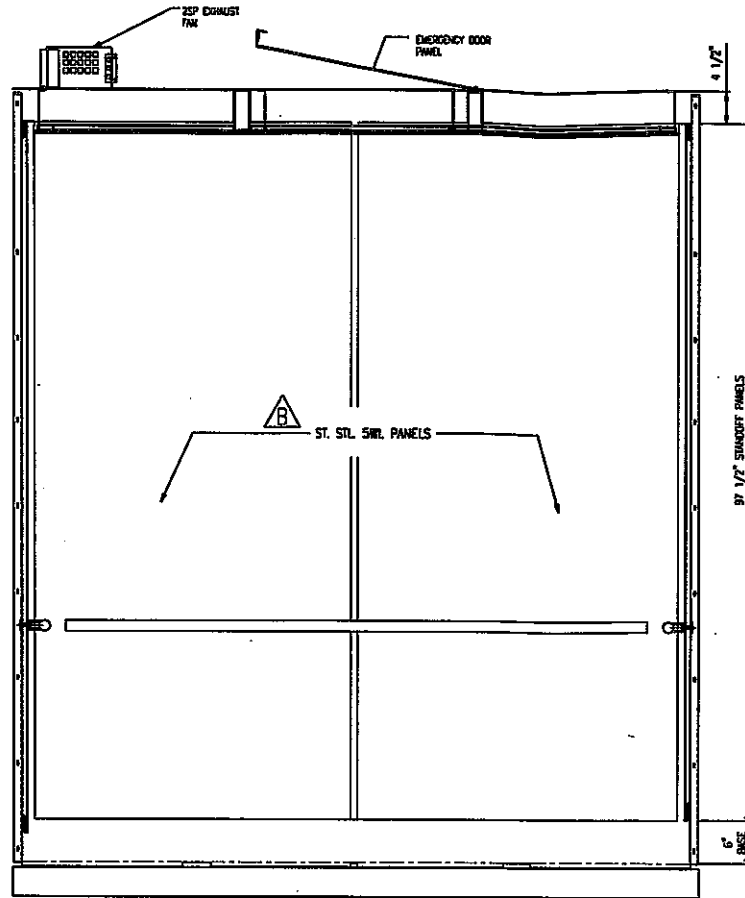
FINAL DRAWING		FOR APPROVAL	
WHEN THE COMPANY HAS BEEN RELEASED FOR FABRICATION, ANY CHANGES MADE AFTER APPROVAL WILL RESULT IN ADDITIONAL COST AND COMPLETION TIME.		FOR APPROVAL	FOR APPROVAL
		REVISIONS FOR APPROVAL	REVISIONS FOR APPROVAL
		FINAL DISTRIBUTION	FINAL DISTRIBUTION
		CRREVISED FINAL DISTRIBUTION	CRREVISED FINAL DISTRIBUTION

PROJECT NAME	COLLEGE OF SAN MATEO		
ADDRESS	1700 W. HILLSDALE BLVD. SAN MATEO, CA 94402		
CONTRACTOR:	MC CARTHY SF.		
ARCHITECT	LPA		
DRAWN	MC	DATE	05/15/08
CHECK	JC	DATE	
DWG TITLE	ENTRANCE		
LOCATION NO.	12212SH	ELE#	2,3
IDESA NO.			
DWG. NO.	12212SH-202	DO NOT SCALE	

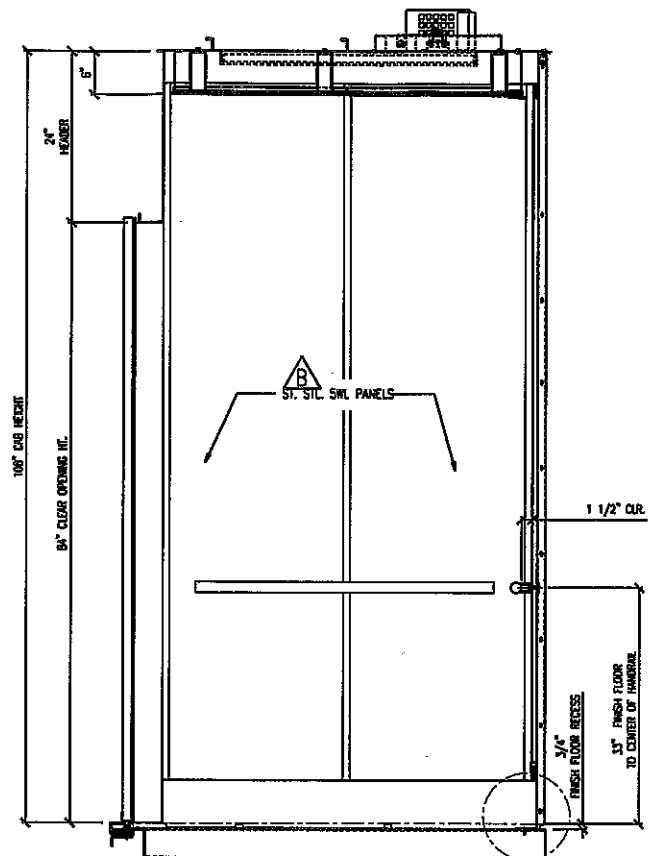




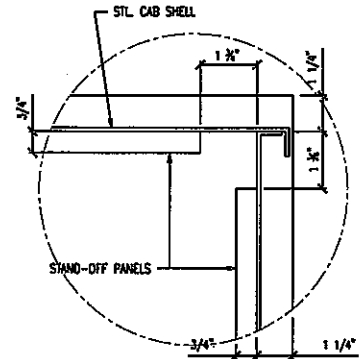
FRONT
 A



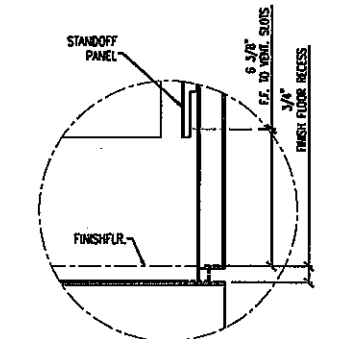
REAR
 A



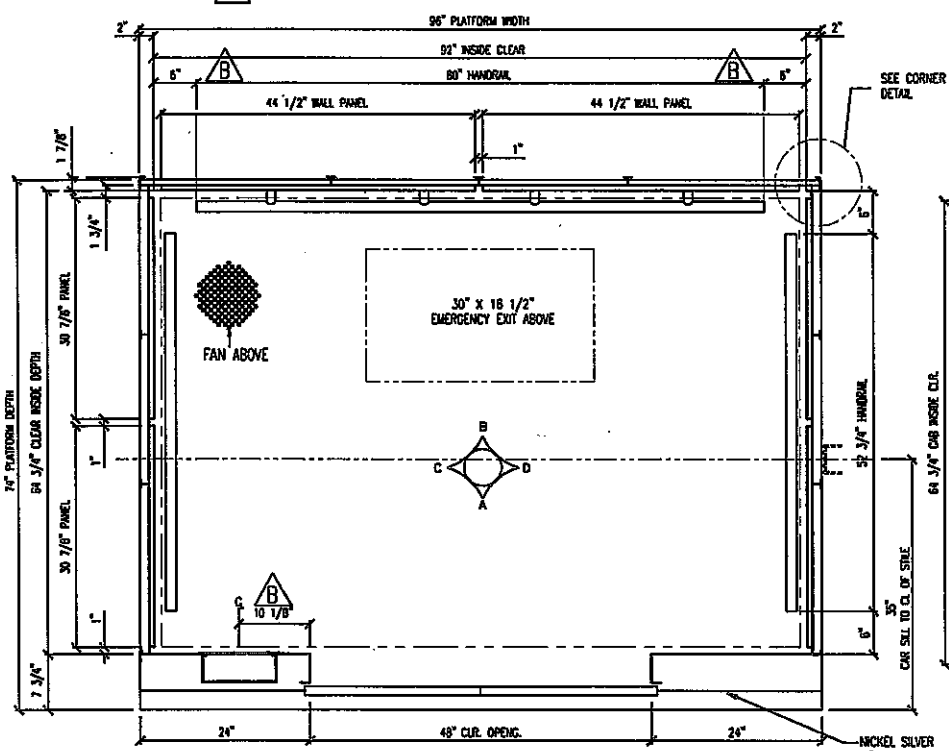
SHOWN SIMILAR
 D
 C



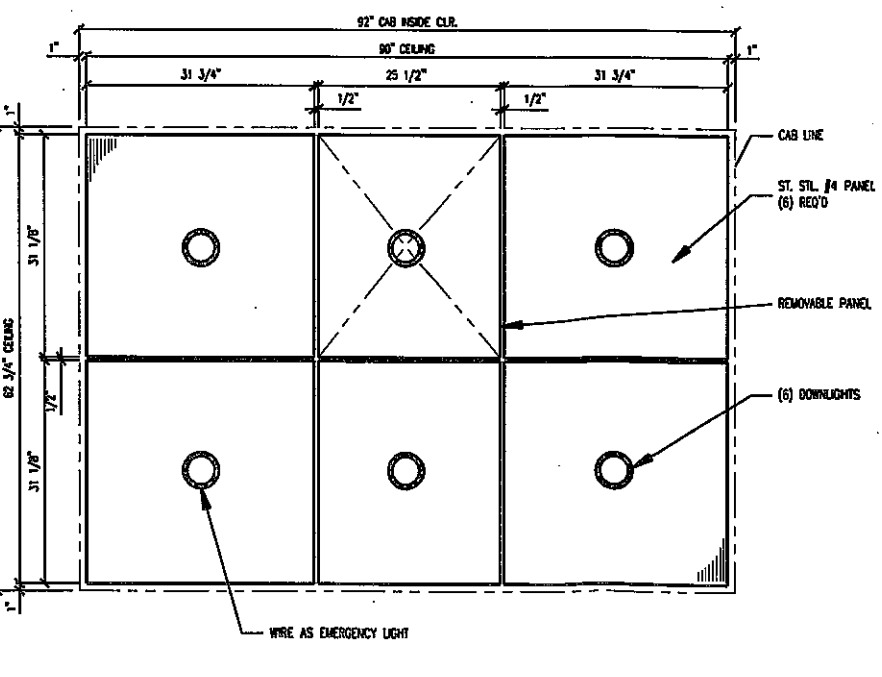
A CORNER DETAIL



A VENT. DETAIL
 VENTILATION AS REQ'D PER ASME A17.1



PLAN VIEW
 (1) CAB ASSEMBLIES REQUIRED TOTAL



A REFLECTED CEILING

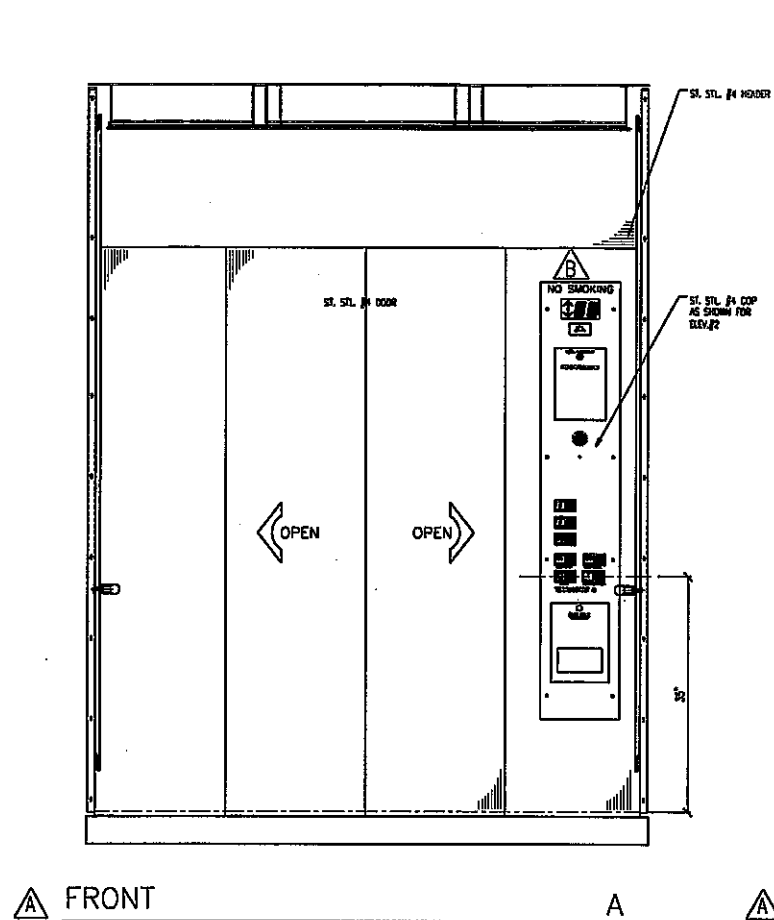
NOTES:
 CAB INTERIOR FINISHES COMPLY WITH ANSI A17.1 2004 SECTION 204

A CAB INTERIOR FINISHES	
WALL PANELS	ST. STL. SWL
HANDRAIL	ST. STL. #4
BASE	ST. STL. #4
CEILING FRAME	N/A
CEILING PANELS	ST. STL. #4
FRONT RETURN	ST. STL. #4
HEADER	ST. STL. #4
CAR DOORS	ST. STL. #4
ACCESSORIES	TYPE
CAR OPER. PANEL	ST. STL. #4
CAR POSITION INDICATOR	ON COP
CAR DIRECTION INDICATOR	NO
PHONE CABINET () GRILLE ()	ON COP
SERVICE CABINET	ON COP
PAD HOOKS	INCLUDED
DOOR PROTECTION	INFRARED DETECTOR
FAN	FAN (2 SPD.)
EST. CAB WEIGHT	

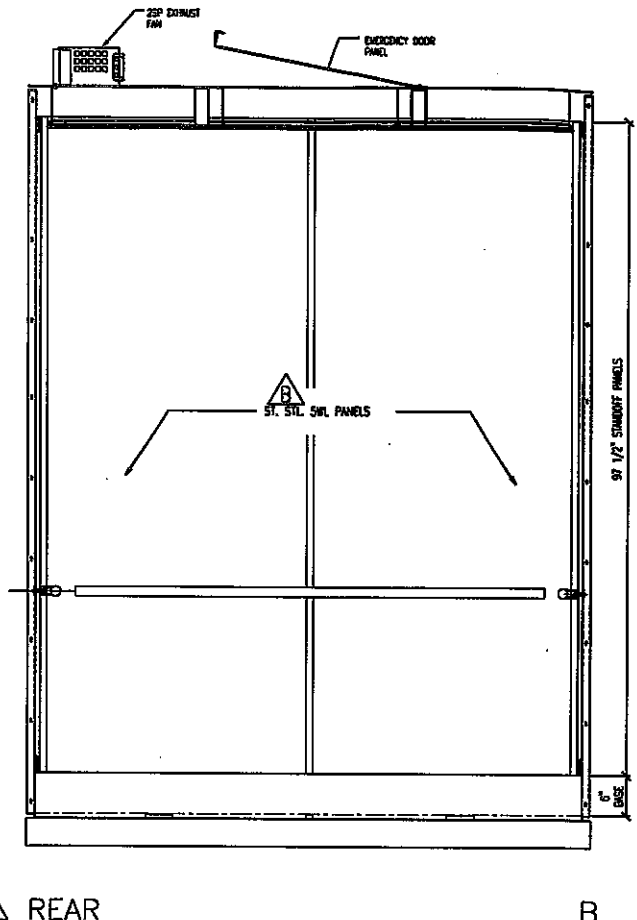
REV.	DATE	BY	DESCRIPTION
C			
B	04/02/09	CRC	CORRECTED WALL PANEL FINISH
A	2/19/09	MC	DWG REV.

FINAL DRAWING		FOR APPROVAL	
WHEN THE EQUIPMENT HAS BEEN RELEASED FOR FABRICATION, ANY CHANGES MADE AFTER APPROVAL WILL RESULT IN ADDITIONAL COST AND COMPLETION TIME.		CHECKED FOR APPROVAL	
		IN FINAL DISTRIBUTION	
		REVISED FINAL DISTRIBUTION	
PROJECT NAME	COLLEGE OF SAN MATEO		
ADDRESS	1700 W. HILLSDALE BLVD. SAN MATEO, CA 94402		
CONTRACTOR:	MC CARTHY SF.		
ARCHITECT	LPA		
DRAWN	MC	DATE	05/15/08
CHECK	JC	DATE	
DWG TITLE	CAB DETAIL		
LOCATION NO.	12212SH	FILE#	#1
IDESA NO.			
DWG. NO.	12212SH-301	DO NOT SCALE	

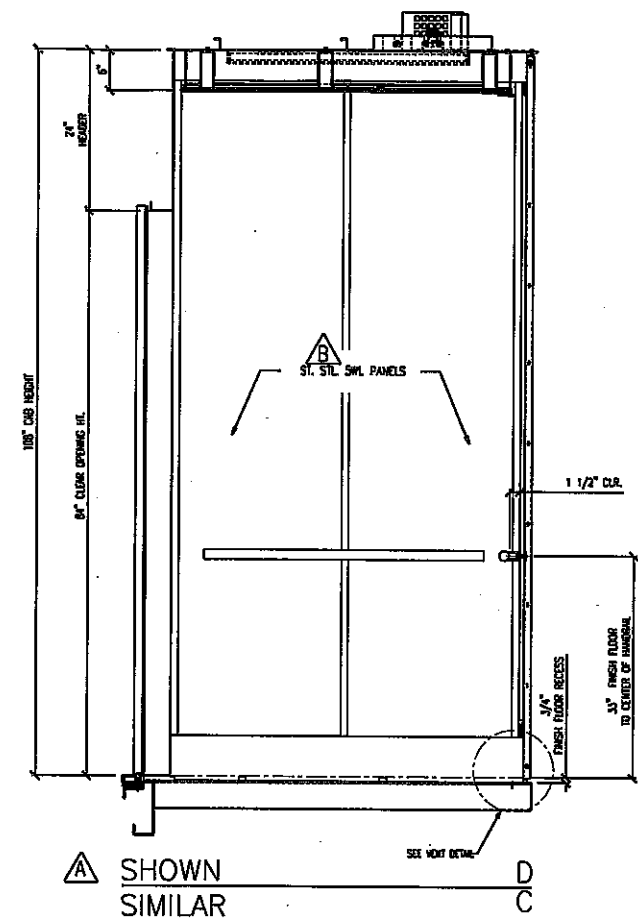




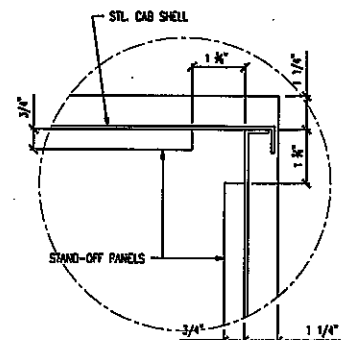
△ FRONT



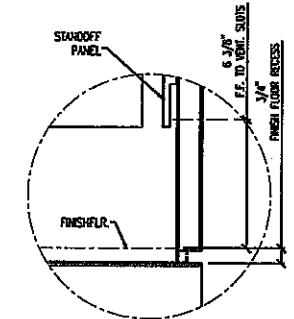
△ REAR



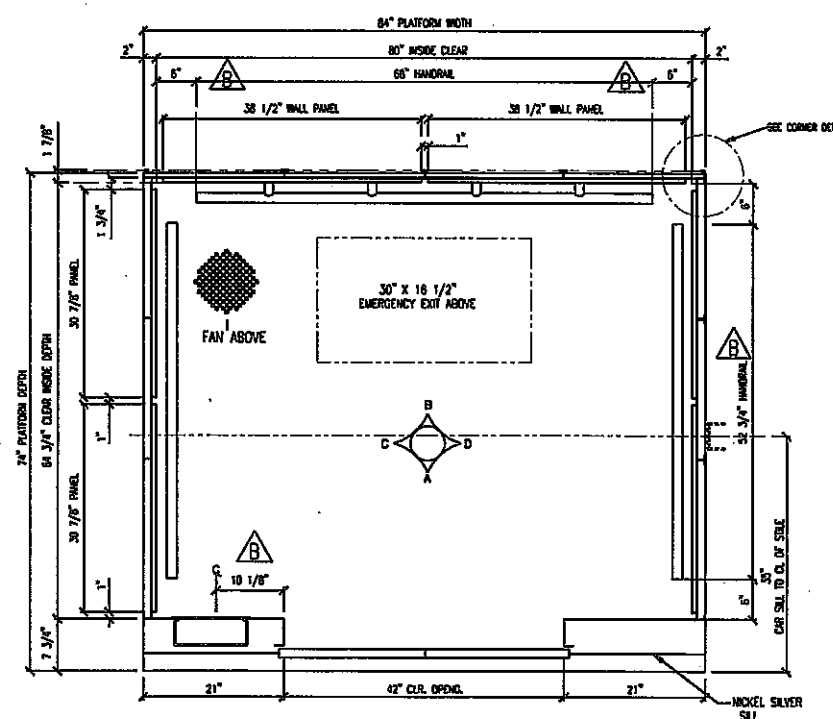
△ SHOWN SIMILAR



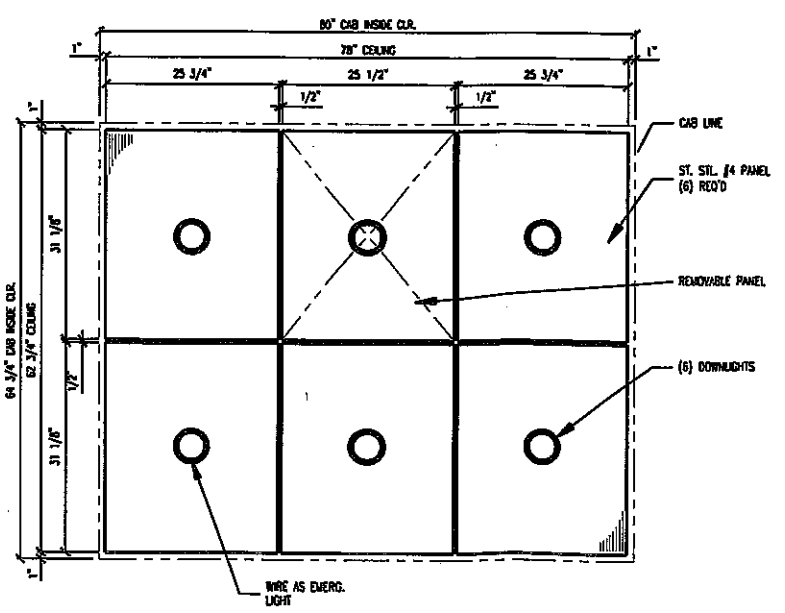
△ CORNER DETAIL



△ VENT. DETAIL
VENTILATION AS REQ'D PER ASME A17.1



△ PLAN VIEW
(2) CAB ASSEMBLIES REQUIRED TOTAL



△ REFLECTED CEILING

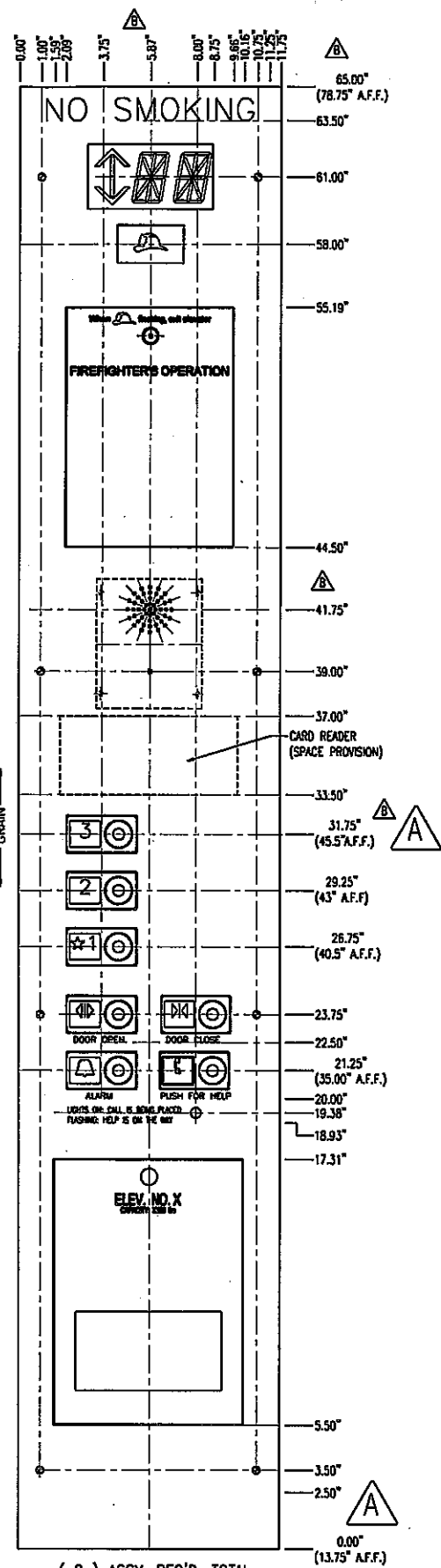
NOTES:
CAB INTERIOR FINISHES COMPLY WITH ANSI A17.1 2004 SECTION 204

△ CAB INTERIOR FINISHES	
ACCESSORIES	TYPE
WALL PANELS	ST. STL. SWL
HANDRAIL	ST. STL. #4
BASE	ST. STL. #4
CEILING FRAME	N/A
CEILING PANELS	ST. STL. #4
FRONT RETURN	ST. STL. #4
HEADER	ST. STL. #4
CAR DOORS	ST. STL. #4
CAR OPER. PANEL	ST. STL. #4
CAR POSITION INDICATOR	ON COP
CAR DIRECTION INDICATOR	NO
PHONE CABINET () GRILLE ()	ON COP
SERVICE CABINET	ON COP
PAD HOOKS	INCLUDED
DOOR PROTECTION	INFRARED DETECTOR
FAN	FAN (2 SPD.)
EST. CAB WEIGHT	

REV.	DATE	BY	DESCRIPTION
C			
B	04/02/09	CRC	CORRECTED WALL PANELS FINISH
A	2/19/09	MC	DWG REV.

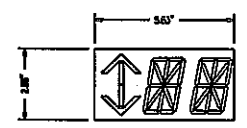
FINAL DRAWING		FOR APPROVAL	
WHEN THE EQUIPMENT HAS BEEN RELEASED FOR FABRICATION, ANY CHANGES MADE AFTER APPROVAL WILL RESULT IN ADDITIONAL COST AND COMPLETION TIME.		CHECKED FOR APPROVAL	
		FINAL DISTRIBUTION	
		REVISED FINAL DISTRIBUTION	
PROJECT NAME	COLLEGE OF SAN MATEO		
ADDRESS	1700 W. HILLSDALE BLVD. SAN MATEO, CA 94402		
CONTRACTOR:	MC CARTHY SF.		
ARCHITECT	LPA		
DRAWN	MC	DATE	05/15/08
CHECK	JC	DATE	
DWG TITLE	CAB DETAIL		
LOCATION NO.	12212SH	ELEV#	#2, #3
IDESA NO.			
DWG. NO.	12212SH-302		DO NOT SCALE



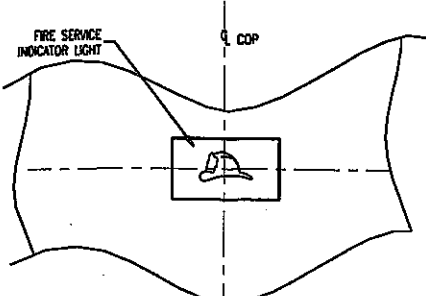


(2) ASSY. REQ'D. TOTAL

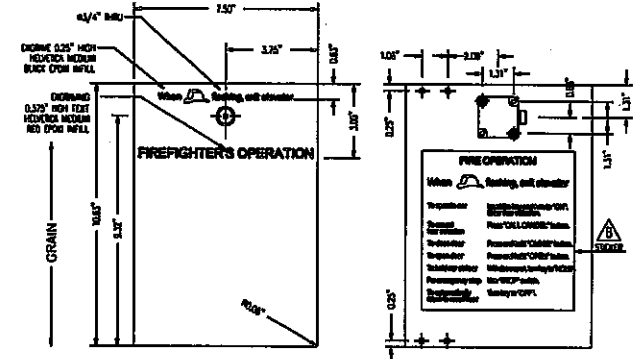
NO SMOKING



DIGITAL POSITION INDICATOR CUTOUT & STUDS LOCATION DETAIL

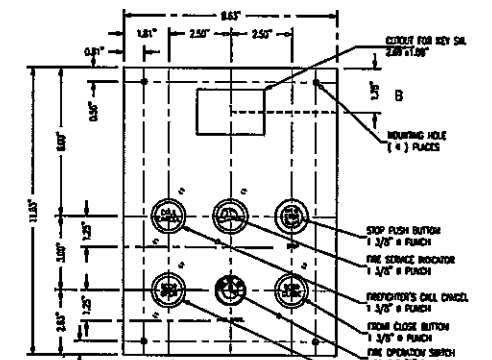


FIRE SERVICE INDICATOR DETAIL & FIREMAN'S PHONE JACK

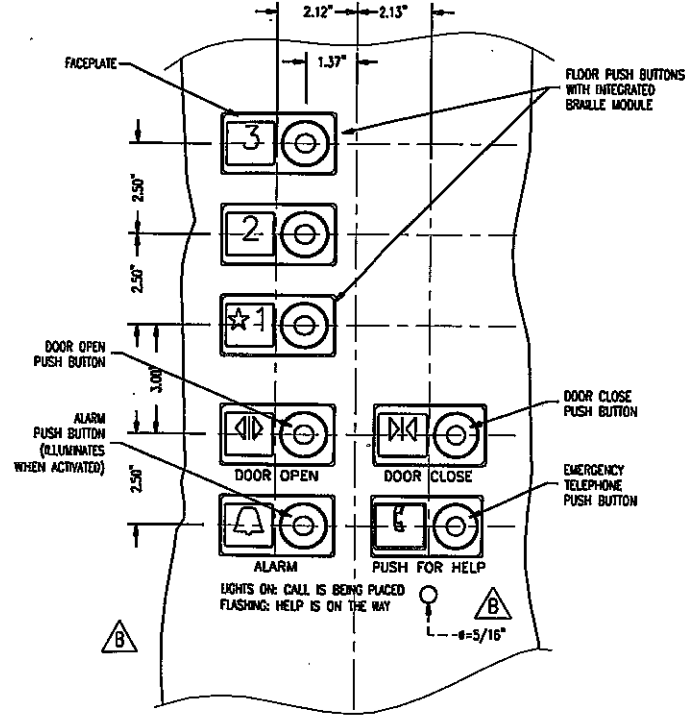


FIRE SERVICE CABINET DOOR DETAIL (1) REQ'D. PER CAR OPERATING PANEL MATERIAL: 11 GA. ST. STL. FINISH: SATIN (#4)

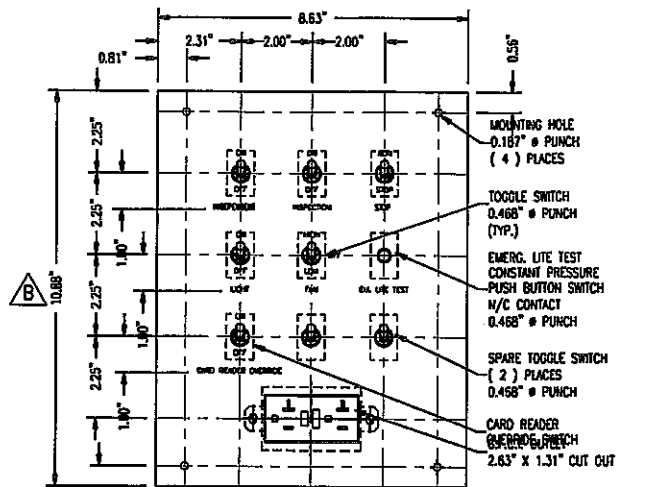
ASME A17.1 (05) PHASE II FIRE INSTRUCTIONS DETAIL



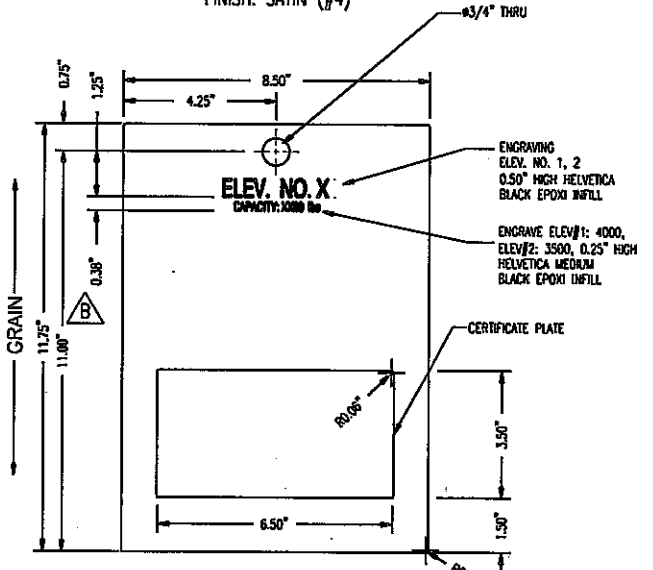
FIRE SERVICE PLATE DETAIL (1) REQ'D. PER COP MATERIAL: 16 GA. ST. STL. FINISH: SATIN (#4)



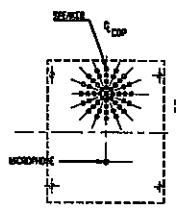
LOWER SECTION BUTTONS ARRANGEMENT DETAIL



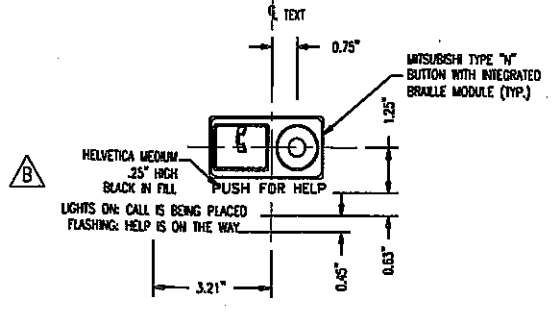
SERVICE PLATE DETAIL (1) REQ'D. PER SERVICE CABINET MATERIAL: 16 GA. ST. STL. FINISH: SATIN (#4)



SERVICE CABINET DOOR DETAIL (1) REQ'D. PER CAR OPERATING PANEL MATERIAL: 14 GA. ST. STL. FINISH: SATIN (#4)



SPEAKER PATTERN DETAIL WURTEC 11-933 EMERGENCY PHONE

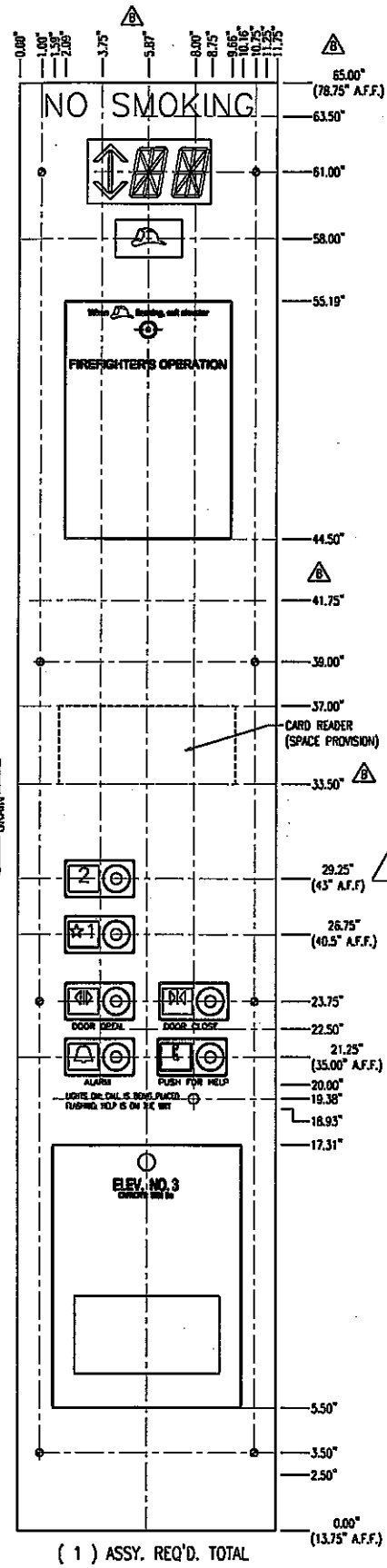


BUTTON PUNCH PATTERN (TYP.) AND PHONE BUTTON ENGRAVING DETAIL

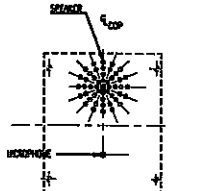
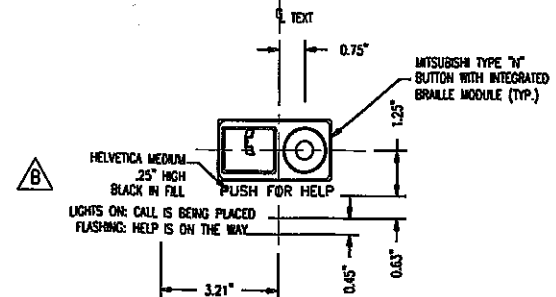
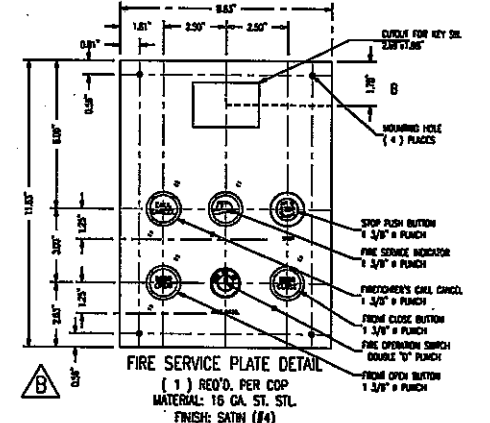
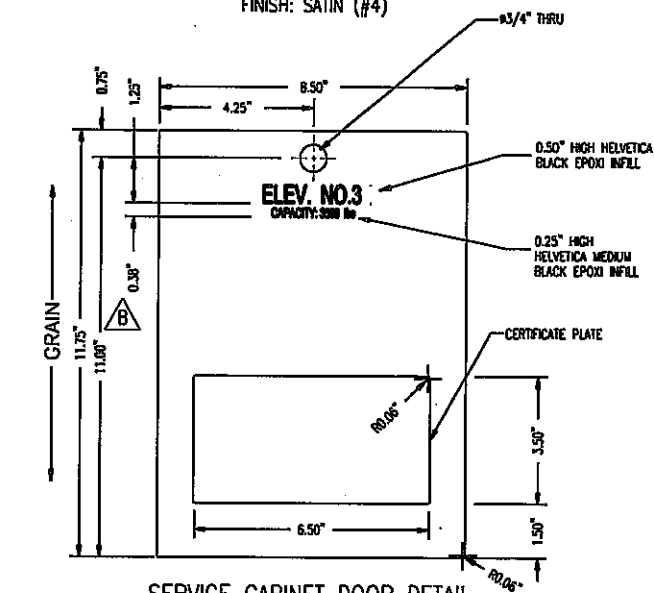
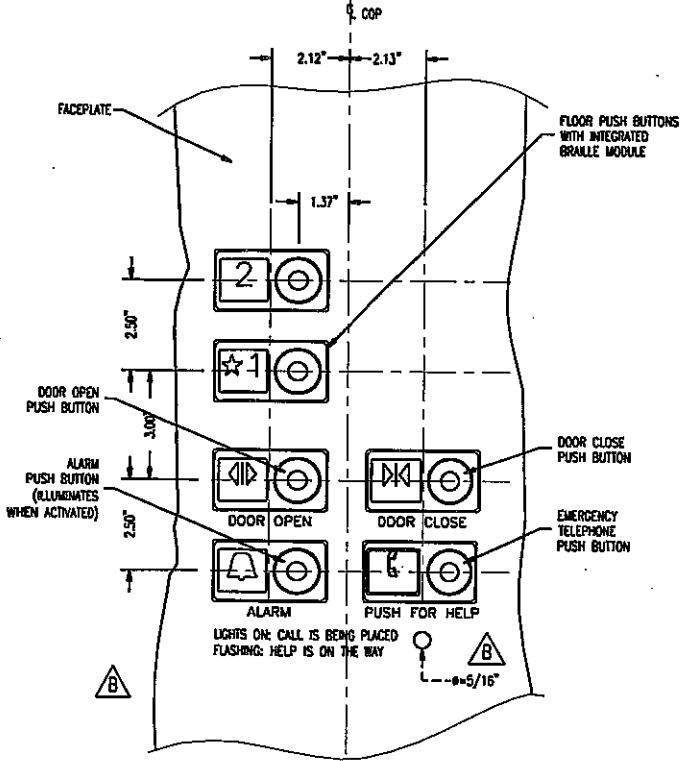
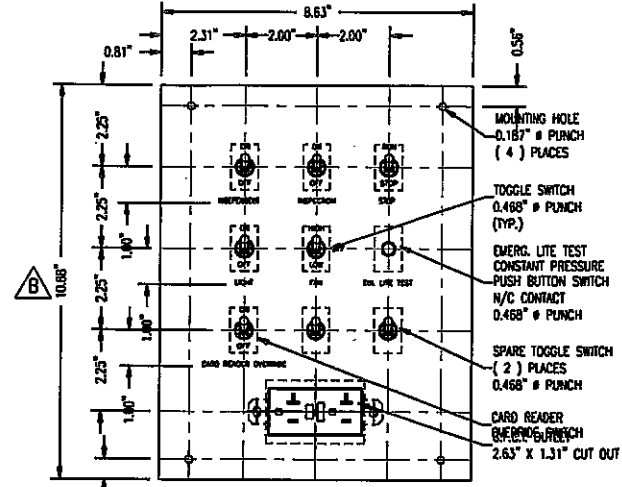
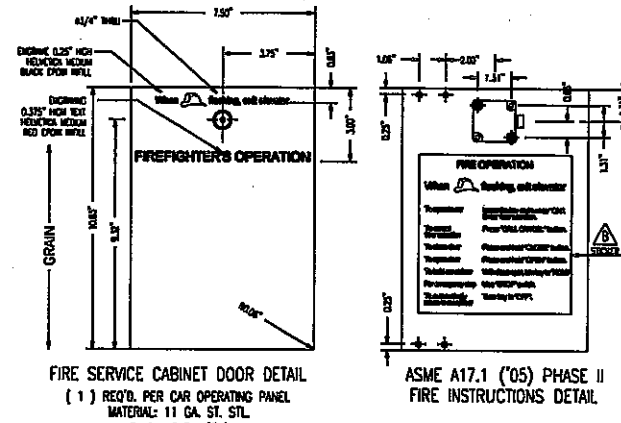
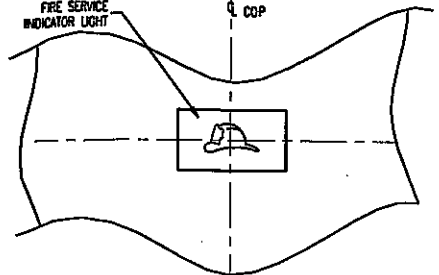
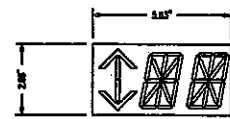
BUTTONS TYPE: MITSUBISHI TYPE "N"
FACEPLATE MATERIAL: 11 GA. ST. STL. #4
BUTTONS ILLUMINATION: 120 VOLTS LED'S
CONTROLLER WIRING TYPE: MCE

REV.	DATE	BY	DESCRIPTION
C			
B	04/02/08	CRC	ADDED DIMENSIONS
A	2/19/08	MC	DWG REV. FINAL
FINAL DRAWING			
WHEN THE EQUIPMENT HAS BEEN RELEASED FOR FABRICATION, ANY CHANGES MADE AFTER APPROVAL WILL RESULT IN ADDITIONAL COST AND COMPLETION TIME.			DATE APPROVAL: [] DESIGNED FOR APPROVAL: [] FINAL DISTRIBUTION: [] CHECKED FINAL DISTRIBUTION: []
PROJECT NAME	COLLEGE OF SAN MATEO		
ADDRESS	1700 W. HILLSDALE BLVD. SAN MATEO, CA 94402		
CONTRACTOR:	MC CARTHY SF.		
ARCHITECT	LPA		
DRAWN	MC	DATE	05/15/08
CHECK	JC	DATE	
DWG TITLE	CAR OPERATING PANEL		
LOCATION NO.	12212SH	ELEV#	#1, #2
IDESA NO.			
DWG. NO.	12212SH-451	DO NOT SCALE	





NO SMOKING



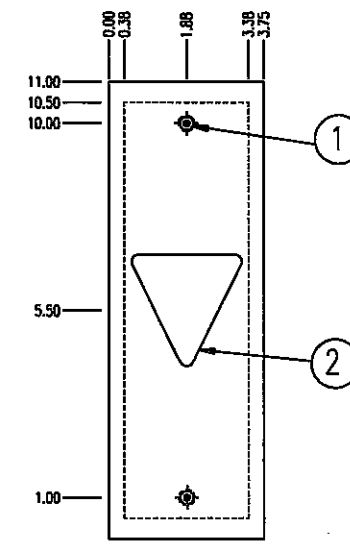
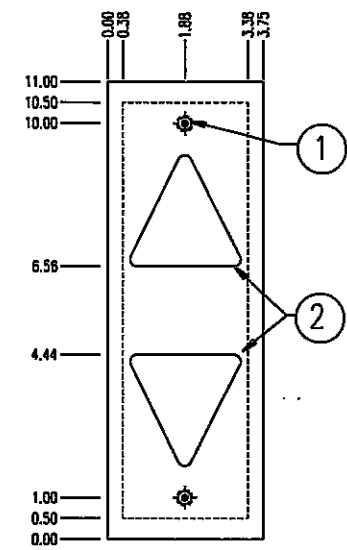
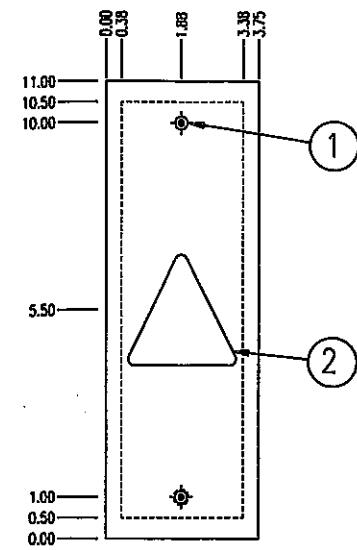
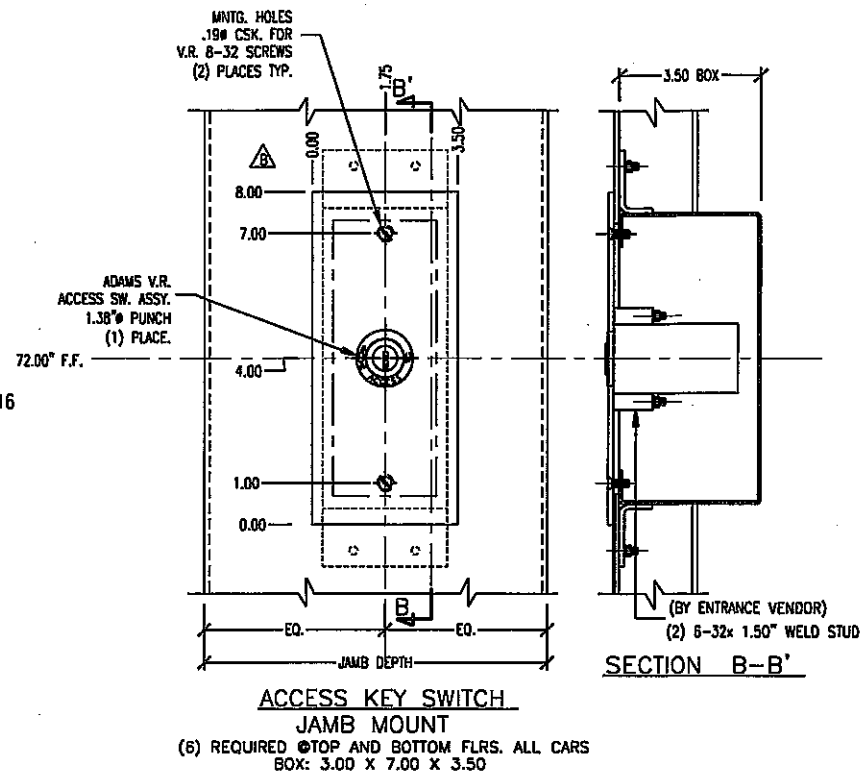
BUTTONS TYPE: MITSUBISHI TYPE "N"
FACEPLATE MATERIAL: 11 GA. ST. STL. #4
BUTTONS ILLUMINATION: 120 VOLTS LED'S
CONTROLLER WIRING TYPE: MCE

REV.	DATE	BY	DESCRIPTION
C			
B	04/02/09	CRC	ADDED DIMENSIONS
A	2/19/09	MC	DWG REV. FINAL.
FINAL DRAWING			COPY FOR APPROVAL
WHEN THE EQUIPMENT HAS BEEN RELEASED FOR FABRICATION, ANY CHANGES MADE AFTER APPROVAL WILL RESULT IN ADDITIONAL COST AND COMPLETION TIME.			CHECKED FOR APPROVAL
			FINAL DISTRIBUTION
PROJECT NAME			COLLEGE OF SAN MATEO
ADDRESS			1700 W. HILLSDALE BLVD. SAN MATEO, CA 94402
CONTRACTOR:			MC CARTHY SF.
ARCHITECT			LPA
DRAWN	MC	DATE	05/15/08
CHECK	JC	DATE	
DWG TITLE			CAR OPERATING PANEL
LOCATION NO.			12212SH ELEV #3
IDESA NO.			
DWG. NO.			12212SH-452 DO NOT SCALE

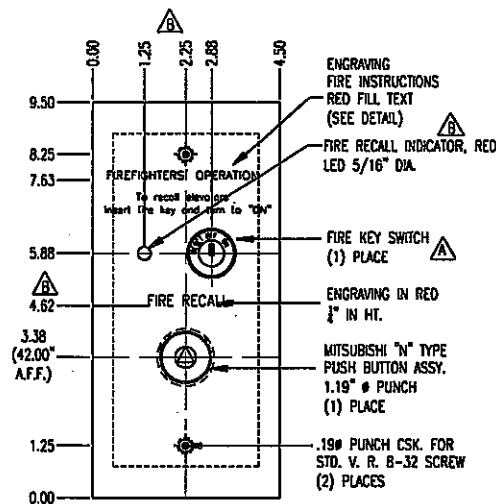


0.00 — FIREFIGHTERS' OPERATION
 0.50 — To recall elevators
 Insert fire key and turn to "ON"
 0.81

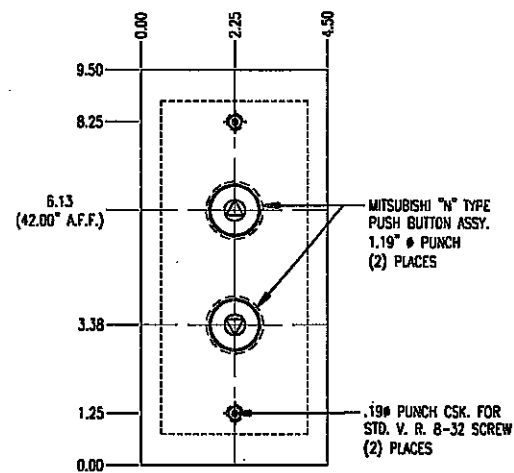
ANSI ('04) PHASE I FIRE INSTRUCTIONS
 ENGRAVE HELVETICA MEDIUM
 RED PAINT INFILL



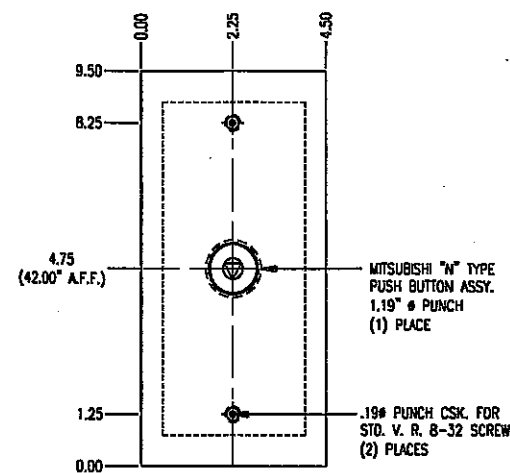
NOTE:
 1.—MNTG. HOLES .19\"/>
 2.—WHITE LEXAN ARROW VACUUM FORMED, PROTRUDES 0.50\"/>



HALL STATION @ FLOOR "1"
 (2) REQ'D TOTAL
 (1) FOR ELEV. #1, #2
 (1) FOR ELEV. #3
 BOX: 3.50\"/>



HALL STATION @ FLOOR "2"
 (1) REQ'D TOTAL FOR ELEV. #1, #2
 BOX: 3.50\"/>



HALL STATION @ FLOOR "2" FOR ELEV. #3
FLOOR "3" FOR ELEV. #1, #2
 (2) REQ'D TOTAL
 (1) FOR ELEV. #1, #2
 (1) FOR ELEV. #3
 BOX: 3.50\"/>

NOTE:
 FACEPLATE MATERIAL:
 HALL STATION AND LANTERNS:
 11 GA. ST. STL. #4
 SHEAR ALL EDGES DOWN
 ACCESS PLATE 14GA. ST. STL. #4

REV.	DATE	BY	DESCRIPTION
C			
B	04/03/09	CRC	ADDED DIMENSIONS
A	2/19/09	MC	DWG REV. FINAL.

FINAL DRAWING

WHEN THE EQUIPMENT HAS BEEN RELEASED FOR FABRICATION, ANY CHANGES MADE AFTER APPROVAL WILL RESULT IN ADDITIONAL COST AND COMPLETION TIME.

FOR APPROVAL
 REVISED FOR APPROVAL
 FINAL DISTRIBUTION
 REVISED FINAL DISTRIBUTION

PROJECT NAME	COLLEGE OF SAN MATEO		
ADDRESS	1700 W. HILLSDALE BLVD. SAN MATEO, CA 94402		
CONTRACTOR:	MC CATHY SF.		
ARCHITECT	LPA		
DRAWN	MC	DATE	05/15/08
CHECK	JC	DATE	
DWG TITLE	FIXTURE		
LOCATION NO.	12212SH	ELE#	ALL
IDEA NO.			
DWG. NO.	12212SH-453	DO NOT SCALE	

**MITSUBISHI
 ELECTRIC**
 ELEVATORS & ESCALATORS