

College of San Mateo

Conformed Set

North Gateway Load Center & Site Wall San Mateo County Community College District

architects and planners
noll & tam
729 Heinz Avenue
Berkeley, CA 94710
510.649.8295
fax 510.649.3008

PROJECT TEAM

Architects
Noll & Tam Architects
729 Heinz Avenue, Suite 7
Berkeley, California 94710
Tel: 510.649.8295
FAX: 510.649.3008

Structural Engineers
KPW
337 17th Street #216
Oakland, CA 94612
Tel: 510.208.3300
FAX:

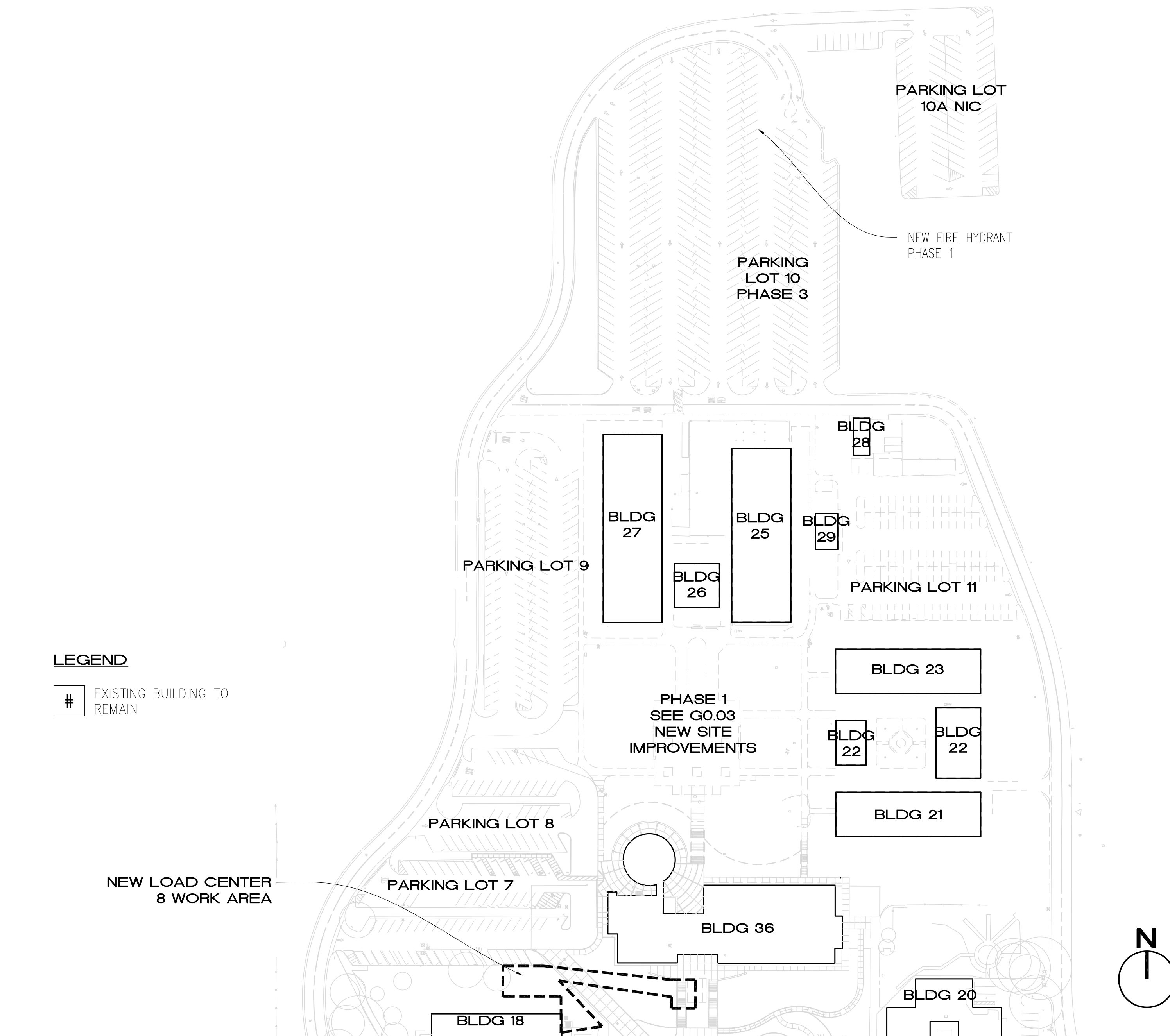
Civil Engineers
BKF
4670 Willow Road, Suite 250
Pleasanton, CA 94588
Tel: 650.482.6300
FAX:

Electrical Engineers
Jeff Sultan
2081 Camino de los Robles
Menlo Park, CA 94025
Tel: 650.854.7585
FAX: 415.837.0800

Landscape Architects
LPA
1548 Eureka Road, Suite 101
Roseville, CA 95661
Tel: 916.772.4300

PARTIAL GENERAL SITE PLAN - EXISTING

SCALE: 1" = 120'-0"



CODE COMPLIANCE

PARTIAL LIST OF APPLICABLE CODES

2007 California Building Standards Administrative Code Part 1, Title 24, C.C.R.
2007 California Building Code (CBC), Part 2, Title 24, C.C.R. (Based on 2006 International Building Code with 2007 California Amendments)
2007 California Electrical Code (CEC), Part 3, Title 24, C.C.R. (Based on 2005 National Electrical Code with 2007 California Amendments)
2007 California Mechanical Code (CMC), Part 4, Title 24, C.C.R. (Based on 2006 Uniform Mechanical Code with 2007 California Amendments)
2007 California Plumbing Code (CPC), Part 5, Title 24, C.C.R. (Based on 2006 Uniform Plumbing Code with 2007 California Amendments)
2007 California Energy Code, Part 6, Title 24, C.C.R.
2007 California Fire Code (CFC), Part 9, Title 24, C.C.R. (Based on 2006 International Fire Code with 2007 California Amendments)
2007 California Referenced Standards Code, Part 12, Title 24, C.C.R.
Title 19, C.C.R. Public Safety, State Fire Marshal Regulations

PARTIAL LIST OF APPLICABLE STANDARDS

ADA Standards for Accessible Design: ADA Accessibility Guidelines for Building and Facilities (ADAAG) (28 CFR Part 36, Appendix A)
NFPA 13, Installation of Sprinkler System, 2002 Edition
NFPA 14, Installation of Standpipe and Hose Systems, 2003 Edition
NFPA 17A, Wet Chemical Extinguishing Systems, 2002 Edition
NFPA 24, Installation of Private Fire Service Mains, and Their Appurtenances, 2002 Edition
NFPA 72, National Fire Alarm Code, as amended by SFM, 2002 Edition

CHAPTER 4 PART 1, TITLE 24 C.C.R. ADMINISTRATIVE REQUIREMENTS (PARTIAL LISTING ONLY)

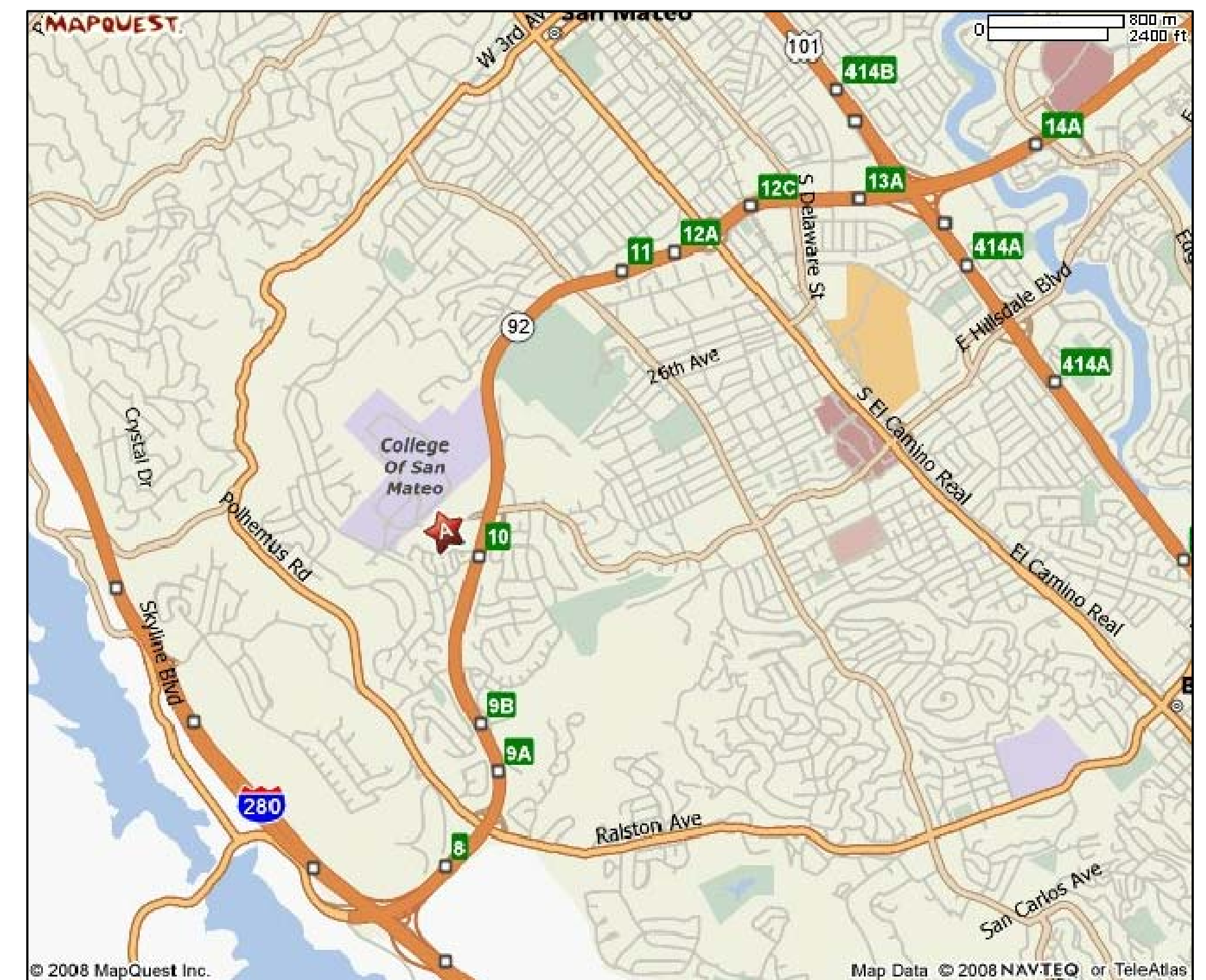
1. A copy of Parts 1 and 2, Title 24, C.C.R. shall be kept on the job site at all times.
2. All change orders and addend to be signed by the Architect and the Owner and approved by DSA. Change orders are not valid until approved by DSA Section 4-338, Part 1, Title 24.
3. All tests to conform to the requirements of Section 4-335, Part 1, Title 24, and approved T & L sheet.
4. Tests of materials and testing laboratory shall be in accordance with Section 4-335 of Part 1, Title 24 and the District shall employ and pay the laboratory. Costs of re-test may be back charged to the Contractor.
5. DSA shall be notified at the start of construction and prior to the placement of concrete per Section 4-331, Part 1, Title 24.
6. Inspector shall be approved by DSA. Inspector shall be in accordance with Section 4-333(b). The duty of the Inspector shall be in accordance with Section 4-342, Part 1, Title 24.
7. Supervision of Construction by DSA shall be in accordance with section 4-334, Part 1, Title 24.
8. Contractor, Inspector, Architect, and Engineers shall submit verified reports (Form SSS-6) in accordance with Section 4-336 and 4-343, Part 1, Title 24.
9. The Architect and the Structural Engineer shall perform their duties in accordance with Section 4-33(a) and 4-341, Part 1, Title 24.
10. The Contractor shall perform his duties in accordance with Section 4-343, Part 1, Title 24.
11. The intent of the drawings and specifications is to construct the school building in accordance with Title 24, C.C.R. Should any conditions develop not covered by the contract documents wherein the finished work will not comply with Title 24, C.C.R., a change order detailing and specify the required work shall be submitted to and approved by the Office of Regulation Services before proceeding with the work.

DIVISION OF THE STATE ARCHITECT REQUIREMENTS

1. Addenda and Changes as per Section 4-338.
2. Inspector approved by DSA.
3. Inspector and Continuous inspection of work per Section 4-333(b) and 4-342.
4. Tests and testing laboratory per Section 4-335 (Owner shall pay the testing laboratory).
5. Special inspection per Section 4-333(c).
6. Contractor shall submit verified report per section 4-336 & 4-343 (c).
7. Administration of Construction per Part 1, Title 24, C.C.R.
8. Duties of Architect, Structural Engineer, or Professional Engineer per Section 4-333(a) and 4-341.
9. Duties of contractor per Section 4-343.
10. Verified Reports per Section 4-336.
11. A copy of Part 1 & 2 of Title 24, shall be kept and available in field during Construction.
12. DSA shall be notified on start of construction per Section 4-331.
13. Supervision by DSA per Section 4-343.
14. DSA is not subject to Arbitration.

VICINITY MAP

NOT TO SCALE



NORTH GATEWAY LOAD CENTER + SITE WALL

SCOPE OF WORK:

DECOMMISSIONING AND DEMOLITION OF LOAD CENTER #4 ADJACENT TO CSM BUILDING 36 AND EXISTING TRANSFORMER AND SWITCH GEAR AT THE EAST ENTRANCE TO BUILDING 18.

CONSTRUCTION OF NEW LOAD CENTER #8 NORTH OF BUILDING 18

FURNISHING AND INSTALLATION OF NEW EQUIPMENT, DUCTBANKS AND FEEDERS

IRRIGATION AND LANDSCAPING IN THE WORK LOAD CENTER 8 WORK AREA

TREE TRIMMING AND REMOVAL.

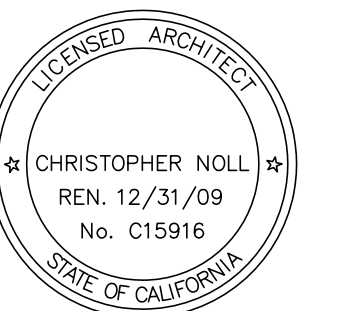
CALIFORNIA STATE FIRE MARSHAL
APPROVED

APPROVAL OF THIS PLAN DOES NOT AUTHORIZE OR APPROVE ANY
OBSERVATION OR DEVIATION FROM APPLICABLE REGULATIONS. FINAL
APPROVAL IS SUBJECT TO REGISTRATION. ONE SET OF APPROVED
PLANS SHALL BE AVAILABLE ON THE PROJECT SITE AT ALL TIMES.

REVIEWED BY: _____ DATE: _____

CSM
NORTH
GATEWAY
LOAD CENTER
& SITE WALL

1700
West Hillsdale Blvd
San Mateo, CA
94402



PROJECT
RECORD
DOCUMENT

SHEET TITLE
Cover Sheet

REVISIONS		
NO.	DATE	DESCRIPTION

DATE: FEBRUARY 24, 2012

DRAWN
CHECKED
SCALE: NA
JOB NO.: 2805

SHEET NUMBER
COVER

LOCAL FIRE AUTHORITY REVIEW
SEE SHEET G0.1