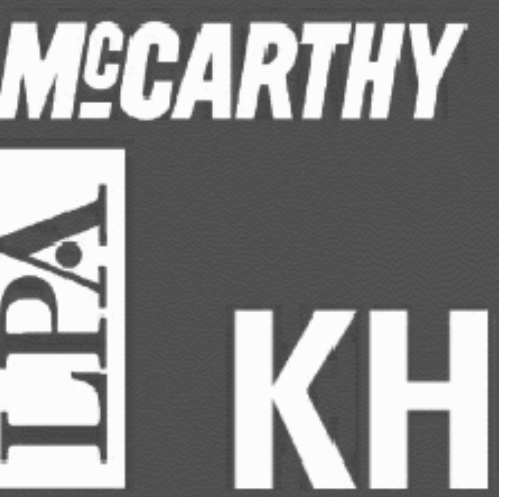
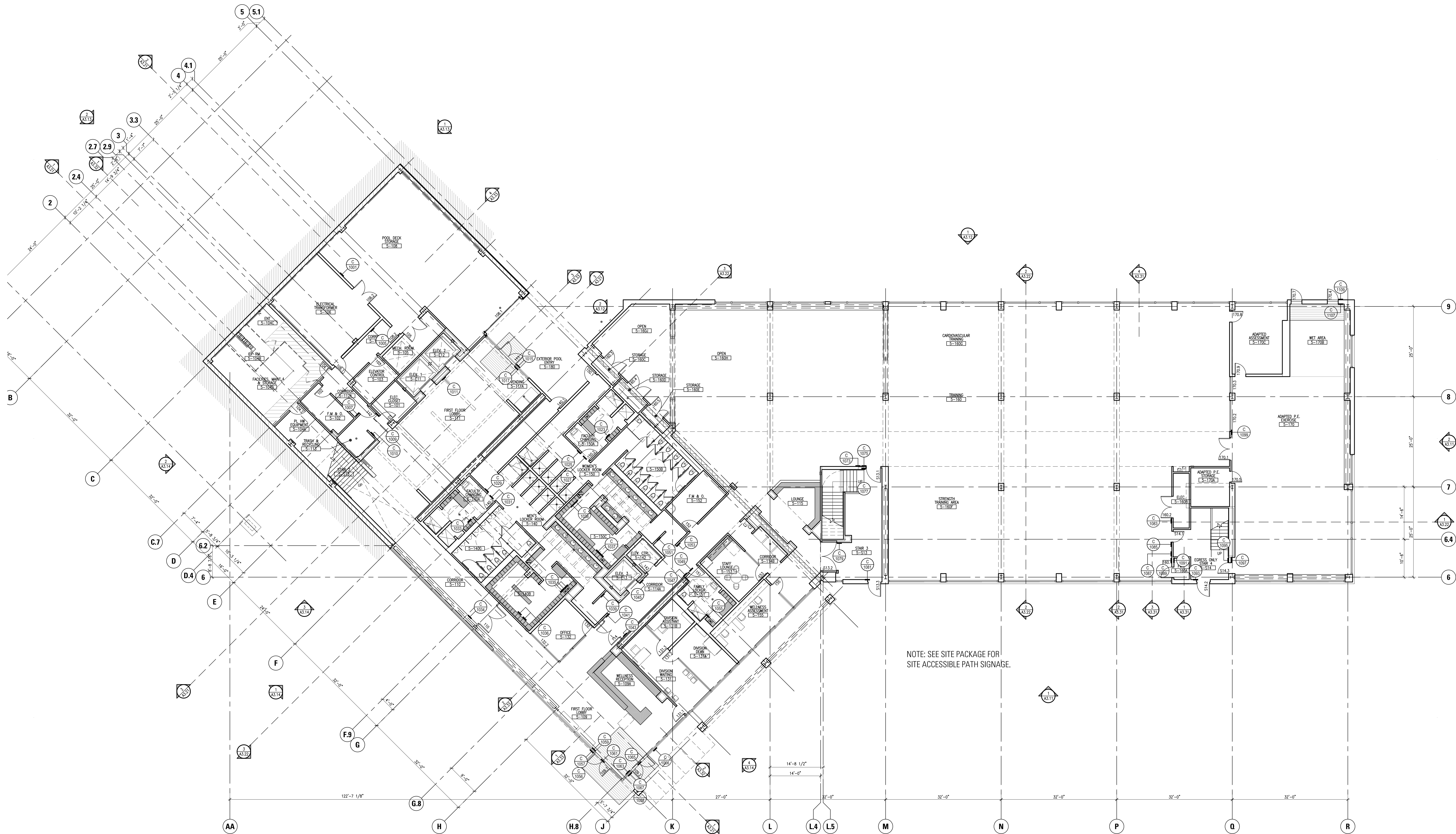


FOR REFERENCE ONLY REFER TO  
CPD's LAYOUT FOR LOCATIONS



Kwan Henmi Architecture / Planning  
456 Montgomery St., Suite 300  
San Francisco, California 94104  
P 415 777-4770  
F 415 777-5102  
W www.kwanhenmi.com



NOTE: SEE SITE PACKAGE FOR  
SITE ACCESSIBLE PATH SIGNAGE.

This and all other project documents are of them, and are not to be used for any purpose other than that intended. Kwan Henmi Architecture / Planning Inc. (Kwan Henmi) and cannot be held liable for any project or purpose except as described in the contract documents between Kwan Henmi and the Client. Kwan Henmi hereby gives notice that the project documents are for informational purposes only and are not intended to constitute a contract. Kwan Henmi and Kwan Henmi's Consultants make no representation or warranty concerning the accuracy, completeness, or timeliness of the information contained in these documents and shall not be held liable for any errors, omissions, or delays in providing information or services from project documents. Project documents describe design intent of work and are not a representation of the final or existing conditions. Kwan Henmi and Kwan Henmi's Consultants make no representation concerning the accuracy of documents and are not responsible for any discrepancies between project documents and the existing conditions. © Copyright 2008

College of San Mateo  
Building 5N  
As Built Drawings  
San Mateo, CA  
Developed for  
San Mateo County Community College District

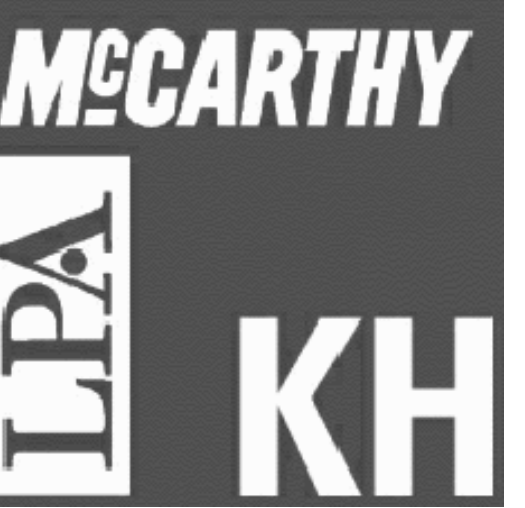
Revision	Description	Date

Revision	Description	Date

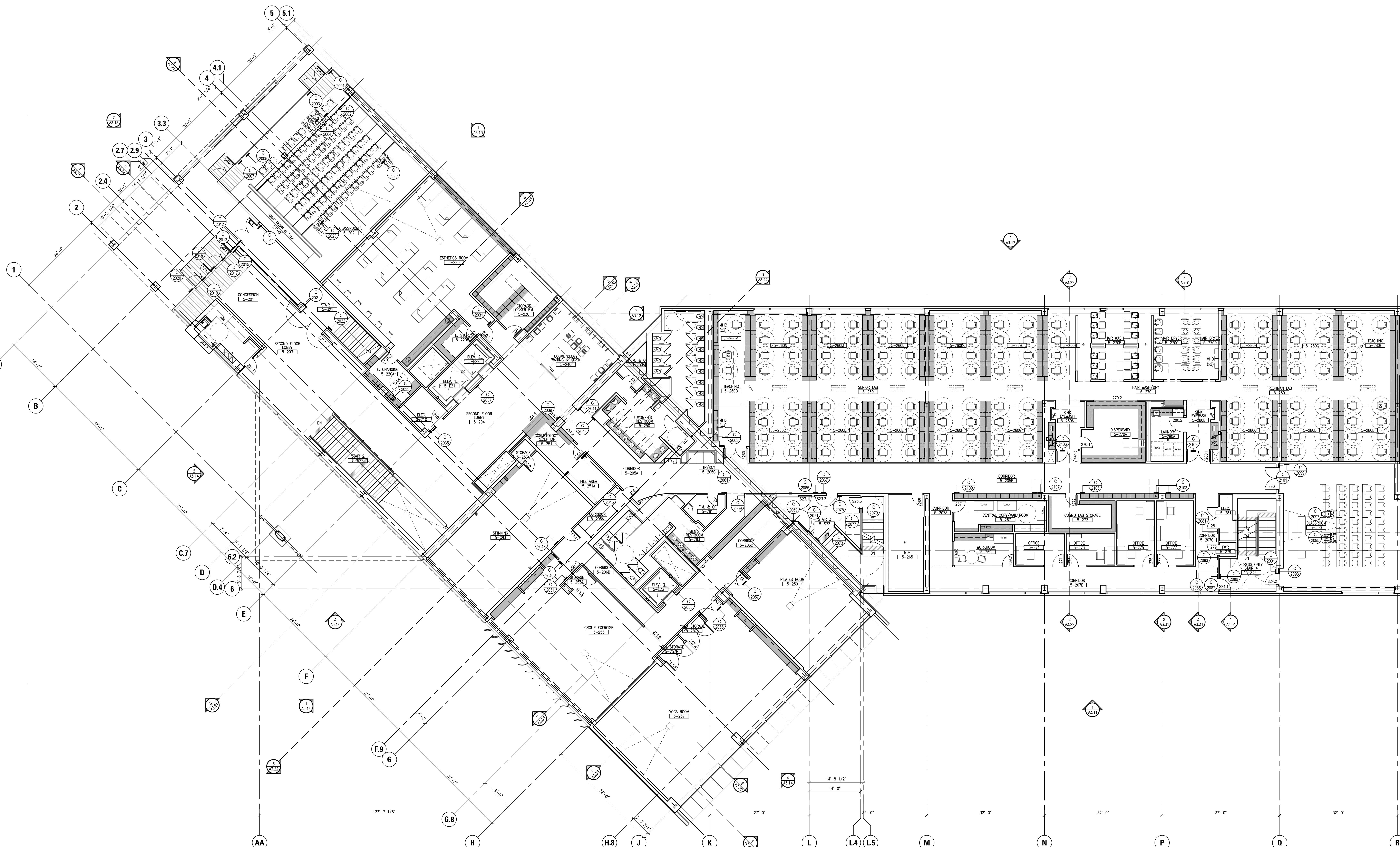
Job No. 0719.00  
Date 4/29/2010  
Scale

FIRST FLOOR  
SIGN LOCATION  
PLAN  
G2.01

FOR REFERENCE ONLY REFER TO  
CPD's LAYOUT FOR LOCATIONS



Kwan Henmi Architecture / Planning  
456 Montgomery St., Suite 300  
San Francisco, California 94104  
P 415 777-4770  
F 415 777-5102  
W www.kwanhenmi.com



This and all other project documents and all sheets, specifications and design incorporated herein are instruments of service. All project documents are the registered property of Kwan Henmi Architecture / Planning, Inc. (Kwan Henmi) and cannot be lawfully used in whole or in part for any project or purpose except as described in the project documents. The reproduction or modification (insertion, deletion or otherwise) of any part of these project documents without the written consent of Kwan Henmi is strictly prohibited. Kwan Henmi and Kwan Henmi's Consultants make no representation concerning the accuracy of documents and are not responsible for any discrepancies between project documents and the existing conditions.

Copyright 2008

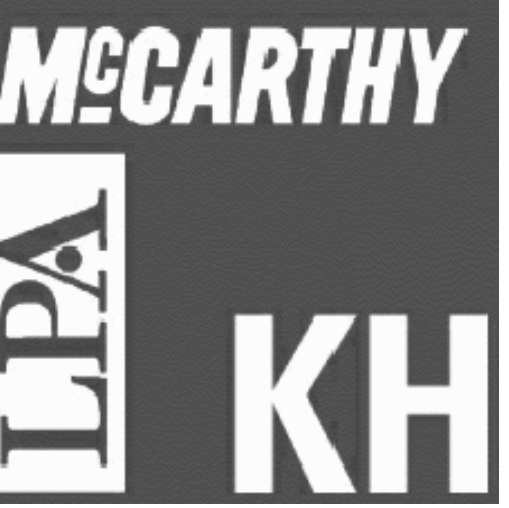
College of San Mateo  
Building 5N  
As Built Drawings  
San Mateo, CA  
Developed for  
San Mateo County Community College District

Revision	Description	Date

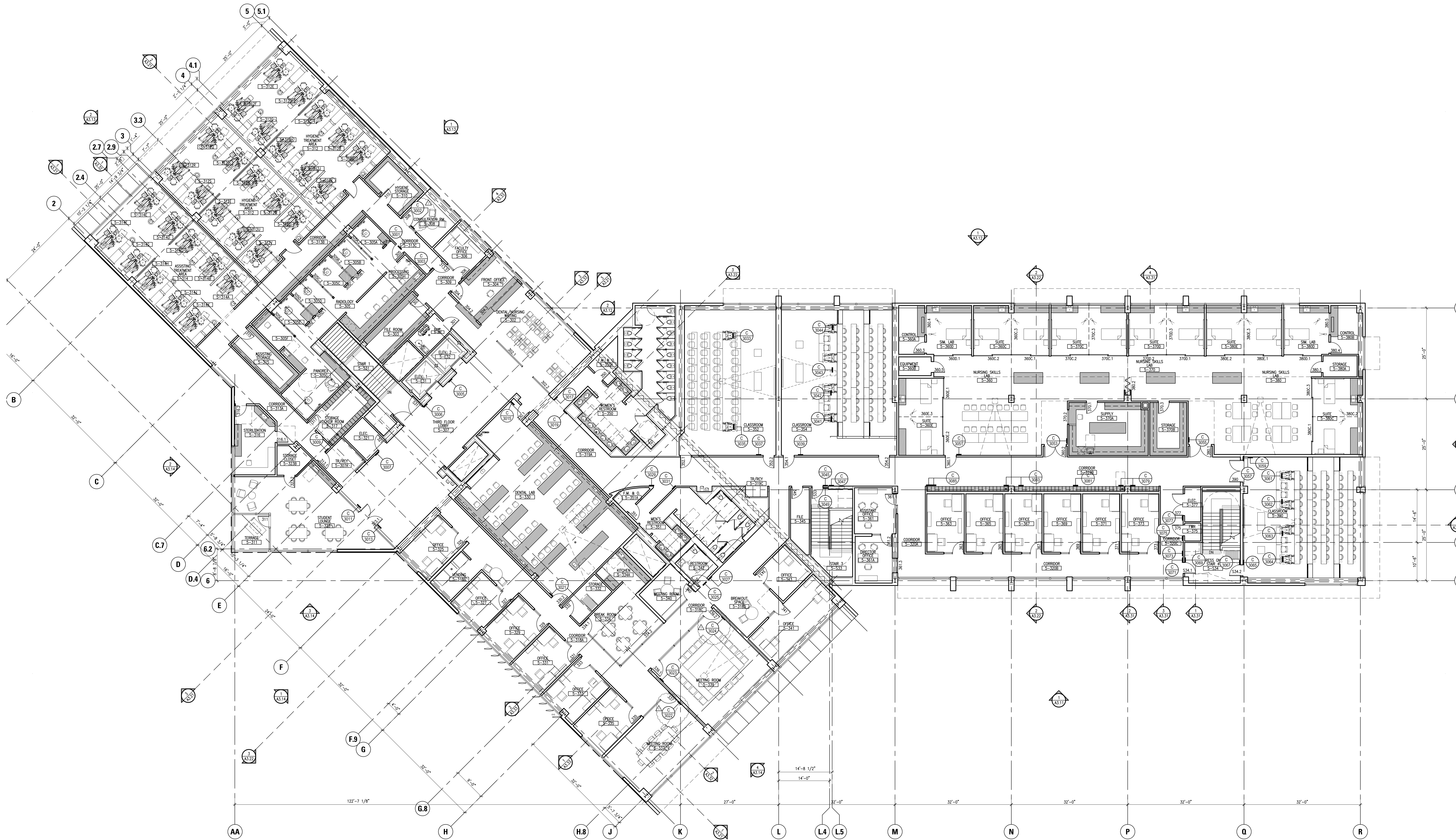
Job No.	0715.00
Date	4/28/2010
Scale	
<b>SECOND FLOOR SIGN LOCATION PLAN</b>	
<b>G2.02</b>	



FOR REFERENCE ONLY REFER TO  
CPD's LAYOUT FOR LOCATIONS



Kwan Henmi Architecture / Planning  
456 Montgomery St., Suite 300  
San Francisco, California 94104  
P 415 777-4770  
F 415 777-5102  
W www.kwanhenmi.com



This and all other project documents are the intellectual property of Kwan Henmi Architecture/Planning Inc. (Kwan Henmi) and cannot be used or copied in whole or in part for any project or purpose except as described in the project documents and specifications (Contract). It is the property of Kwan Henmi Architecture/Planning Inc. and is not to be used, copied, or reproduced in any form without the prior written consent of Kwan Henmi Architecture/Planning Inc. Project documents describe design intent of work and are not a representation of the final or installed conditions. Kwan Henmi and Kwan Henmi's Consultants make no representation concerning the accuracy of documents and are not responsible for any discrepancies between project documents and the existing conditions.  
© Copyright 2008

College of San Mateo  
Building 5N  
As Built Drawings  
San Mateo, CA  
Developed for  
San Mateo County Community College District

Revision	Description	Date

Job No. 0715.00  
Date 4.29.2010  
Scale

THIRD FLOOR  
SIGN LOCATION  
PLAN  
G2.03



FOR REFERENCE ONLY REFER TO  
CPD's LAYOUT FOR LOCATIONS

College of San Mateo - Building 5N San Mateo, CA							
DSA Back Check 1							
Sign Schedule							
Issue Date: 10/09/08							
Sheet No.	Sign No.	Sign Type	Qty.	Arrow	Message	Remarks	Level
<b>FLOOR 1 - CODE SIGNAGE</b>							
G2.01	1000					NOTE: All code-required signs listed in this Sign Schedule are located on the Sign Location plans with a four-digit number in a bubble. All room identification signs are listed in this Sign Schedule and tied to an architectural room number (SXXX). They are not bubbled on the Sign Location Plans.	Back Check 1
G2.01	1001	ID.10	1		5-108 ELECTRICAL TRANSFORMER		
G2.01	1005	ID.10	1		5-108 ELECTRICAL TRANSFORMER		
G2.01	1007	CD.4	1		EXIT ROUTE		
G2.01	1008	CD.4	1		EXIT ROUTE		
G2.01	1009	ID.10	1		5-101 ELECTRICAL ROOM		
G2.01	1010	ID.10	1		5-113 TRASH RECYCLING		
G2.01	1011	CD.1	1		(evacuation map)		
G2.01	1015	CD.9	1		(isa)	Align Sign 1015 with Sign 1017.	
G2.01	1017	CD.4	1		EXIT	Align Sign 1017 with Sign 1015.	
G2.01	1023	CD.9	4		(isa)	On lower locker.	
G2.01	1025	ID.11	1		5-150A (female symbol) FACULTY LOCKER		
G2.01	1027	CD.5	1		(isa/female)		
G2.01	1029	ID.11	1		5-140A (male symbol) FACULTY LOCKER		
G2.01	1031	CD.6	1		(isa/male)		
G2.01	1033	CD.9	1		(isa)	On lower locker.	
G2.01	1034	CD.4	1		EXIT ROUTE		
G2.01	1035	CD.9	4		(isa)	On lower locker.	

College of San Mateo - Building 5N San Mateo, CA							
DSA Back Check 1							
Sign Schedule							
Issue Date: 10/09/08							
Sheet No.	Sign No.	Sign Type	Qty.	Arrow	Message	Remarks	Level
G2.01	1065	CD.8	1		THIS DOOR TO REMAIN UNLOCKED WHEN BUILDING IS OCCUPIED.		
G2.01	1066	CD.10	1		(Proposition 65 hazardous chemicals notice)		
G2.01	1067	CD.9	1		(isa)	Align Sign 1067 with Sign 1063.	
G2.01	1069	CD.4	0		EXIT ROUTE		
G2.01	1073	CD.1	1		(evacuation map)		
G2.01	1075	CD.4	1		EXIT ROUTE		
G2.01	1077	CD.4	1		FLOOR 1 NOT AN EXIT		
G2.01	1079	CD.4	1		NOT AN EXIT		
G2.01	1081	CD.4	1		(star)EXIT	Sign panel to be red.	
G2.01	1083	ID.10	1		5-106B ELECTRICAL ROOM		
G2.01	1085	ID.10	1		5-160A FIRE WATER RISER		
G2.01	1087	CD.1	1		(evacuation map)		
G2.01	1089	CD.4	1		EXIT ROUTE		
G2.01	1091	CD.4	1		NOT AN EXIT FLOOR 1		
G2.01	1093	CD.4	1		(star)EXIT	Sign panel to be red.	
G2.01	1095	CD.4	1		EMERGENCY EXIT ONLY. ALARM WILL SOUND.		
G2.01	1097	CD.4	1		NOT AN EXIT FLOOR 1		
G2.01	1097	CD.4	1		EXIT ROUTE		
G2.01	1099	CD.4	1		EXIT ROUTE		
G2.01	1101	CD.9	1		(isa)	On lower locker.	

College of San Mateo - Building 5N San Mateo, CA							
DSA Back Check 1							
Sign Schedule							
Issue Date: 10/09/08							
Sheet No.	Sign No.	Sign Type	Qty.	Arrow	Message	Remarks	Level
G2.01	5-155	ID.10	1		5-155 WELLNESS ASSESSMENT		
G2.01	5-160	ID.10	1		5-160 TRAINING		
G2.01	5-160C	ID.10	1		5-160C STORAGE		
G2.01	5-160D	ID.10	1		5-160D STORAGE		
G2.01	5-160E	ID.10	1		5-160E STORAGE		
G2.01	5-170	ID.10	3		5-170 ADAPTED PE EXERCISE ROOM		
G2.01	5-170A	ID.10	1		5-170A STORAGE		
G2.01	5-170C	ID.10	1		5-170C ADAPTED ASSESSMENT		
<b>FLOOR 2 - CODE SIGNAGE</b>							
G2.02	2001	CD.4	1		EXIT	On glass with backer.	
G2.02	2002	CD.9	1		(isa)	On floor.	
G2.02	2003	CD.3	1		Assistive listening devices available at the Floor 2 Reception Desk.	Location subject to review.	
G2.02	2004	CD.9	1		(isa)	On floor.	
G2.02	2005	CD.3	1		Assistive listening devices available at the Floor 2 Reception Desk.	Location subject to review.	
G2.02	2007	CD.4	1		EXIT	On glass with backer.	
G2.02	2011	CD.4	1		(star) EXIT		
G2.02	2012	CD.4	1		STAIR 1		
G2.02	2013	CD.9	1		(isa)		
G2.02	2015	CD.4	1		EXIT		
G2.02	2017	CD.8	1		THIS DOOR TO REMAIN UNLOCKED WHEN BUILDING IS OCCUPIED.		

College of San Mateo - Building 5N San Mateo, CA							
DSA Back Check 1							
Sign Schedule							
Issue Date: 10/09/08							
Sheet No.	Sign No.	Sign Type	Qty.	Arrow	Message	Remarks	Level
G2.02	2053	CD.1	1		(evacuation map)		
G2.02	2055	CD.2	1		MAXIMUM OCCUPANCY CAPACITY XXX PERSONS	On fascia above door. Occupancy number to follow.	
G2.02	2066	CD.4	0		EXIT ROUTE		
G2.02	2057	CD.2	1		MAXIMUM OCCUPANCY CAPACITY XXX PERSONS	On fascia above door. Occupancy number to follow.	
G2.02	2068	CD.4	0		EXIT ROUTE		
G2.02	2059	CD.6	1		(isa/male)		
G2.02	2061	ID.11	1		5-263 (male symbol) MEN		
G2.02	2063	CD.4	1		EXIT ROUTE		
G2.02	2065	CD.1	1		(evacuation map)		
G2.02	2067	CD.4	1		EXIT STAIR DOWN		
G2.02	2069	CD.4	1		EXIT ROUTE		
G2.02	2071	CD.4	1		NOT AN EXIT FLOOR 2		
G2.02	2073	CD.4	1		EXIT STAIR DOWN		
G2.02	2075	CD.4	1		NOT AN EXIT FLOOR 2		
G2.02	2077	CD.4	1		NOT AN EXIT		
G2.02	2079	CD.4	1		FLOOR 2		
G2.02	2081	ID.10	1		5-281 ELECTRICAL ROOM		
G2.02	2083	ID.10	1		5-278 FIRE WATER RISER		

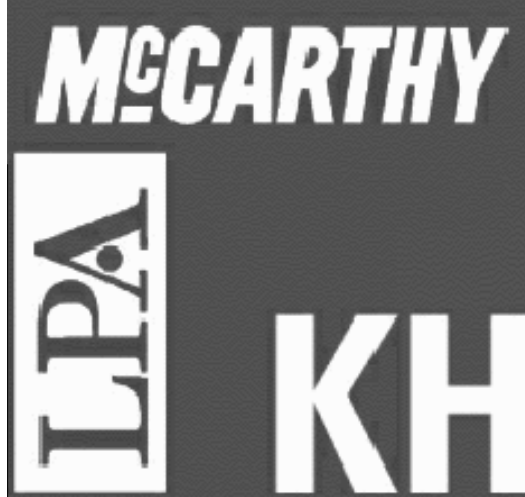
College of San Mateo - Building 5N San Mateo, CA							
DSA Back Check 1							
Sign Schedule							
Issue Date: 10/09/08							
Sheet No.	Sign No.	Sign Type	Qty.	Arrow	Message	Remarks	Level
G2.01	1036	CD.9	2		(isa)	On lower locker.	
G2.01	1037	CD.9	2		(isa)	On lower locker.	
G2.01	1038	CD.9	2		(isa)	On lower locker.	
G2.01	1039	CD.6	1		(isa/male)		
G2.01	1041	ID.11	1		5-140 (male symbol) MEN'S LOCKER ROOM		
G2.01	1043	CD.4	1		EXIT ROUTE		
G2.01	1045	CD.1	1		(evacuation map)		
G2.01	1047	ID.11	1		5-151 (unisex symbol) FAMILY LOCKER ROOM		
G2.01	1049	CD.7	1		(isa/unisex)		
G2.01	1051	CD.5	1		(isa/female)		
G2.01	1053	ID.11	1		5-150 (female symbol) WOMEN'S LOCKER ROOM		
G2.01	1055	CD.9	1		(isa)	On lower locker.	
G2.01	1056	(tbd)	1		(isa) Use building elevators for disabled access to lower and upper campus levels.		
G2.01	1057	CD.9	1		(isa)	Align Sign 1057 with Sign 1059.	
G2.01	1058	(tbd)	1		(isa) Use building elevators for disabled access to lower and upper campus levels.		
G2.01	1059	CD.4	1		EXIT	Align Sign 1057 with Sign 1059.	
G2.01	1061	CD.8	1		THIS DOOR TO REMAIN UNLOCKED WHEN BUILDING IS OCCUPIED.		
G2.01	1063	CD.4	1		EXIT	Align Sign 1063 with Sign 1067.	

College of San Mateo - Building 5N San Mateo, CA							
DSA Back Check 1							
Sign Schedule							
Issue Date: 10/09/08							
Sheet No.	Sign No.	Sign Type	Qty.	Arrow	Message	Remarks	Level
G2.01	1103	ID.11	1		5-170B (unisex symbol) LOCKER ROOM		
G2.01	1105	CD.7	1		(isa/unisex)		
G2.01	1107	CD.4	1		EXIT		
G2.01	1109	CD.8	1		(isa)	On wall.	
<b>FLOOR 1 - ROOM IDENTIFICATION</b>							
G2.01	5-102	ID.10	1		5-102 MAINTENANCE		
G2.01	5-103	ID.10	1		5-103 ELEVATOR CONTROL		
G2.01	5-104	ID.10	1		5-104 FACILITIES MAINTENANCE		
G2.01	5-105	ID.10	1		5-105 MECHANICAL ROOM		
G2.01	5-108	ID.10	1		5-108 POOL DECK STORAGE		
G2.01	5-130	ID.10	1		5-130 FILE STORAGE		
G2.01	5-131	ID.10	1		5-131 WAITING ROOM		
G2.01	5-131A	ID.12	1		(staff name to follow) 5-131A DIVISION DEAN		
G2.01	5-131B	ID.12	1		(staff name to follow) 5-131B DIVISION ASSISTANT		
G2.01	5-132	ID.12	1		(staff name to follow) 5-132		
G2.01	5-152	ID.10	1		5-152 MAINTENANCE		
G2.01	5-153	ID.10	1		5-153 STAFF LOUNGE		

College of San Mateo - Building 5N San Mateo, CA							
DSA Back Check 1							
Sign Schedule							
Issue Date: 10/09/08							
Sheet No.	Sign No.	Sign Type	Qty.	Arrow	Message	Remarks	Level
G2.02	2018	(tbd)	1		(isa) Use building elevators for disabled access to lower and upper campus levels.		
G2.02	2019	CD.8	1		THIS DOOR TO REMAIN UNLOCKED WHEN BUILDING IS OCCUPIED.		
G2.02	2020	CD.10	1		(Proposition 65 hazardous chemicals notice)		
G2.02	2021	CD.4	1		TO EXIT		
G2.02	2022	CD.9.1	1		(isa) Use elevators to your left for access to Floor 3.		
G2.02	2023	CD.9	1		(isa)	On floor.	
G2.02	2029	CD.9	1		(isa)	On floor.	
G2.02	2031	CD.4	1		EXIT ROUTE		
G2.02	2033	CD.9	1		(isa)	On locker.	
G2.02	2035	ID.10	1		5-210 ELECTRICAL ROOM		
G2.02	2037	CD.1	1		(evacuation map)		
G2.02	2039	CD.3	1		(als symbol) Assistive listening devices available here.		
G2.02	2041	CD.5	1		(isa/female)		
G2.02	2043	ID.11	1		5-250 (female symbol) WOMEN		
G2.02	2045	CD.4	1		EXIT ROUTE		
G2.02	2048	CD.2	1		MAXIMUM OCCUPANCY CAPACITY XXX PERSONS	Occupancy number to follow.	
G2.02	2049	CD.4	1		EXIT ROUTE		
G2.02	2051	CD.2	1		MAXIMUM OCCUPANCY CAPACITY XXX PERSONS	Occupancy number to follow.	

College of San Mateo - Building 5N San Mateo, CA							
DSA Back Check 1							
Sign Schedule							
Issue Date: 10/09/08							
Sheet No.	Sign No.	Sign Type	Qty.	Arrow	Message	Remarks	Level
G2.02	2085	CD.1	1		(evacuation map)		
G2.02	2087	CD.4	1		EXIT STAIR DOWN		
G2.02	2089	CD.4	1		AREA OF REFUGE		
G2.02	2091	CD.4	1		NOT AN EXIT FLOOR 2		
G2.02	2093	CD.4	1		EXIT STAIR DOWN		
G2.02	2095	CD.9	1		(isa)	On floor.	
G2.02	2097	CD.9	1		(isa)	On floor.	
G2.02	2099	CD.3	1		(als symbol) Assistive listening devices available at the Floor 2 Reception Desk.		
G2.02	2101	CD.4	1		EXIT ROUTE		
G2.02	2102	CD.4	1		EXIT ROUTE		
G2.02	2103	CD.9	2		(isa)	On middle locker.	
G2.02	2105	CD.9	1		(isa)	On middle locker.	
G2.02	2106	CD.4	1		EXIT ROUTE		
G2.02	2107	CD.9	2		(isa)	On middle locker.	
G2.02	2109	CD.9	2		(is)	On middle locker.	
<b>FLOOR 2 - ROOM IDENTIFICATION</b>							
G2.02	5-201	ID.					





FOR REFERENCE ONLY REFER TO CPD's LAYOUT FOR LOCATIONS

Kwan Henmi Architecture / Planning
456 Montgomery St., Suite 300
San Francisco, California 94104
P 415 777-4770
F 415 777-5102
W www.kwanhenmi.com

Table with columns: Sheet No., Sign No., Sign Type, Qty., Arrow, Message, Remarks, Level. Includes signs for storage, maintenance, reception, and exercise.

Table with columns: Sheet No., Sign No., Sign Type, Qty., Arrow, Message, Remarks, Level. Includes signs for female, women, exit routes, and occupancy.

Table with columns: Sheet No., Sign No., Sign Type, Qty., Arrow, Message, Remarks, Level. Includes signs for equipment, file room, radio, and hygiene.

Table with columns: Sheet No., Sign No., Sign Type, Qty., Arrow, Message, Remarks, Level. Includes signs for control room, equipment, simulation, and assistant.

Table with columns: Sheet No., Sign No., Sign Type, Qty., Arrow, Message, Remarks, Level. Includes signs for senior lab, maintenance, mail room, and workroom.

Table with columns: Sheet No., Sign No., Sign Type, Qty., Arrow, Message, Remarks, Level. Includes signs for evacuation, exit routes, and refuge areas.

Table with columns: Sheet No., Sign No., Sign Type, Qty., Arrow, Message, Remarks, Level. Includes signs for staff names, dental lab, meeting rooms, and classrooms.

Table with columns: Sheet No., Sign No., Sign Type, Qty., Arrow, Message, Remarks, Level. Includes signs for simulation lab, classroom, and nursing skills lab.

This and all other project documents are the intellectual property of Kwan Henmi Architecture / Planning Inc. (Kwan Henmi) and cannot be used, copied, or reproduced in any form or by any means without the prior written consent of Kwan Henmi.

College of San Mateo Building 5N As Built Drawings
San Mateo, CA
Developed for San Mateo County Community College District

Table with columns: Revision, Description, Date. Includes revision history for the drawing.

Job No. 0715.00
Date 4/29/2010
Scale
SIGN SCHEDULE
G8.02



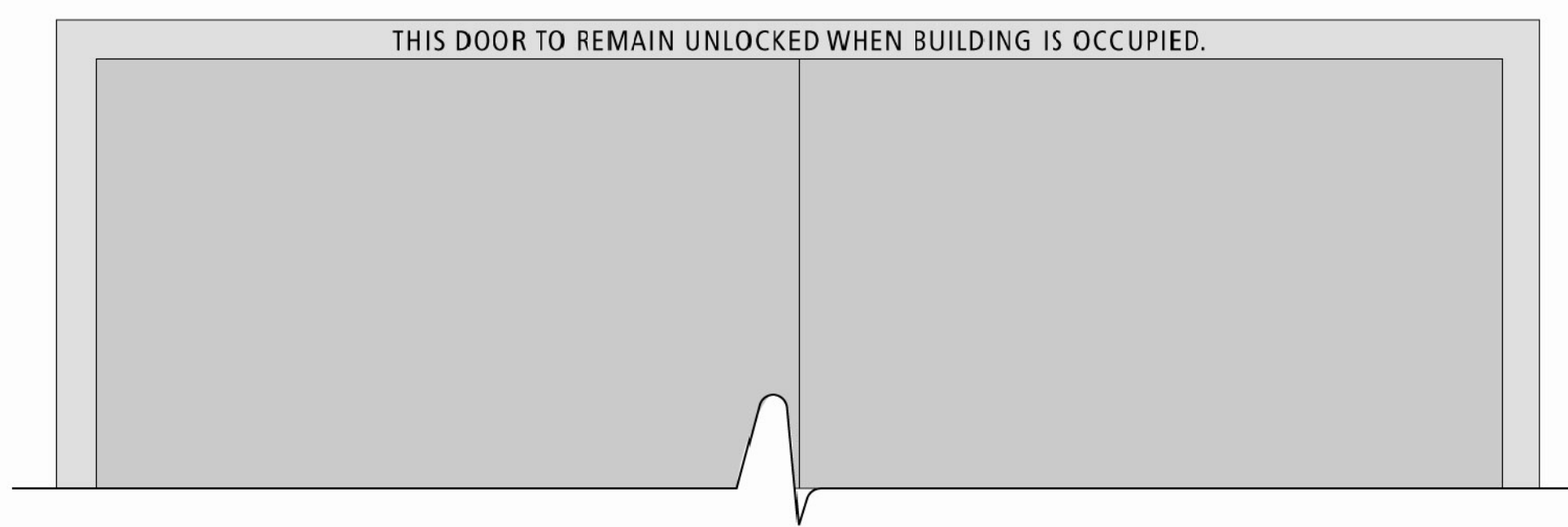


**1 Sign Type CD.1 Emergency Evacuation Map**

Scale: Half Size

17" x 17" plaque with insert window. Screen printed title and address with paper insert map per Title 19 specifications. Mounted on wall 4'-0" AFF to bottom of sign.

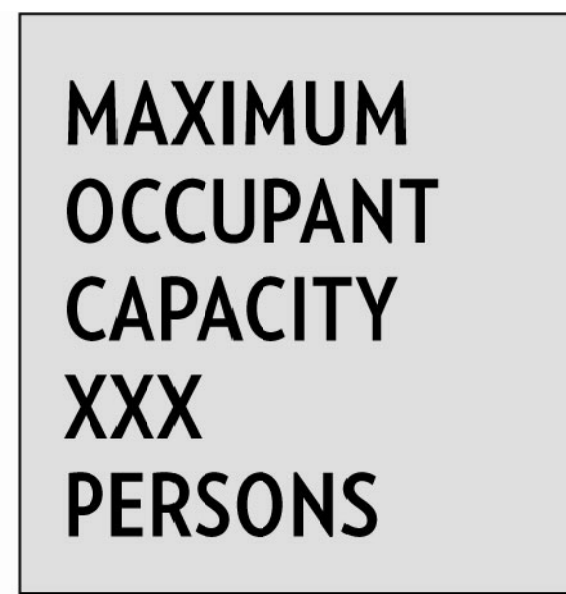
Note: Provide specific artwork for each location/orientation.



**8 Elevation: Sign Type CD.8 Notice above Door**

Scale: 1 1/2"=1'

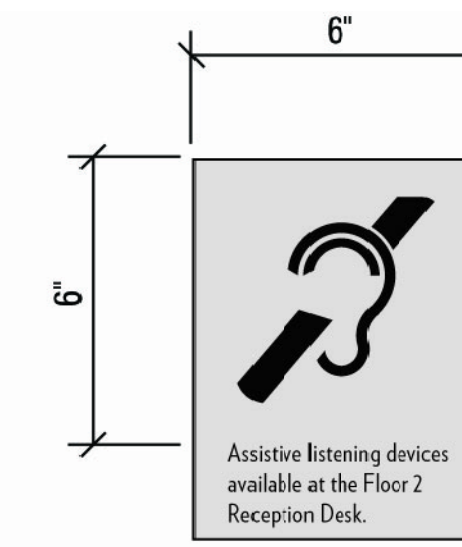
Vinyl copy on door frame.



**2 Sign Type CD.2 Maximum Occupancy**

Scale: 3"=1'

Wall plaque with screen printed 1 1/4" copy.



**3 Sign Type CD.3 Assistive Listening System**

Scale: 3"=1'

Wall plaque with screen printed graphics.



**4 Sign Type CD.4 Tactile Exit Sign**

Scale: 3"=1'

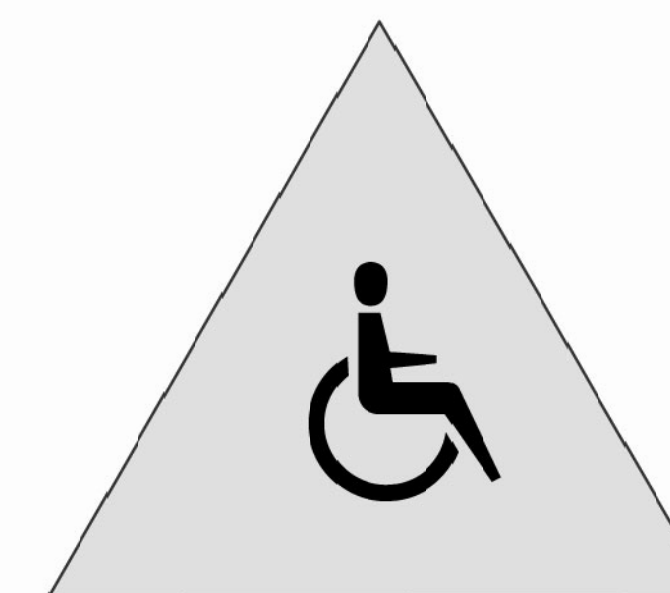
Wall plaque with 5/8" tactile copy, raised 1/32", and California Grade 2 Braille. Mounted 5'-0" on center AFF at latch or right side of designated exit doors.



**5 Sign Type CD.5 Women's Restroom Door**

Scale: 3"=1'

1/4" acrylic plaque, 12" diameter. Plaque is contrasting color from door. Mounted 5'-0" on center AFF.



**6 Sign Type CD.6 Men's Restroom Door**

Scale: 3"=1'

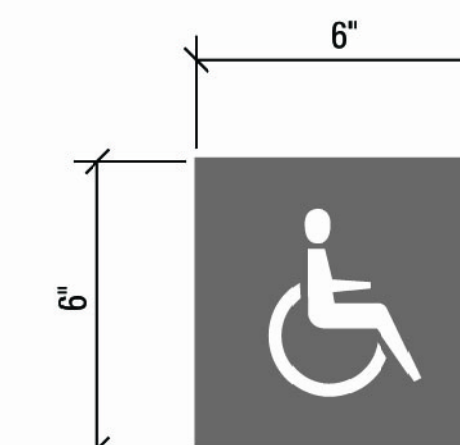
1/4" acrylic plaque, straight side is 12". Plaque is contrasting color from door. Mounted 5'-0" on center AFF.



**7 Sign Type CD.7 Unisex Restroom Door**

Scale: 3"=1'

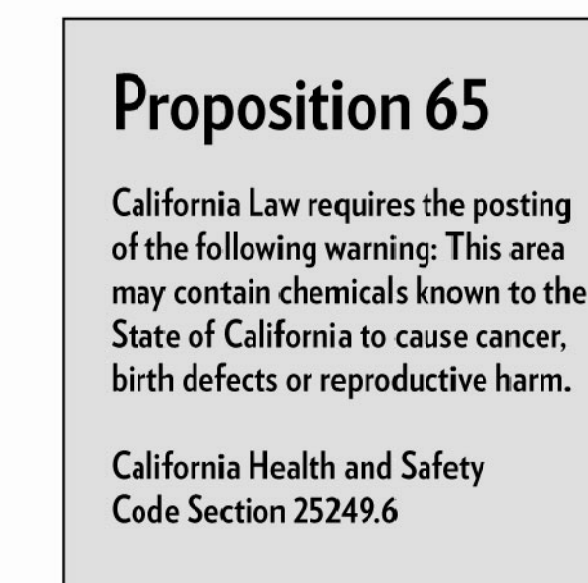
1/4" acrylic plaque, 12" tall. Plaque is contrasting color from door. Triangle is contrasting color from circle. Mounted 5'-0" on center AFF.



**9 Sign Type CD.9 ISA Building Entrance**

Scale: Half Size

Blue plaque with International Symbol of Accessibility. Size varies with use (public building entrances, assigned wheelchair positions and accessible lockers.)



**10 Sign Type CD.10 Prop 65**

Scale: 3"=1'

Wall plaque with screen printed graphics.



**11 Sign Type CD.11 Radiation Notice**

Scale: 3"=1'

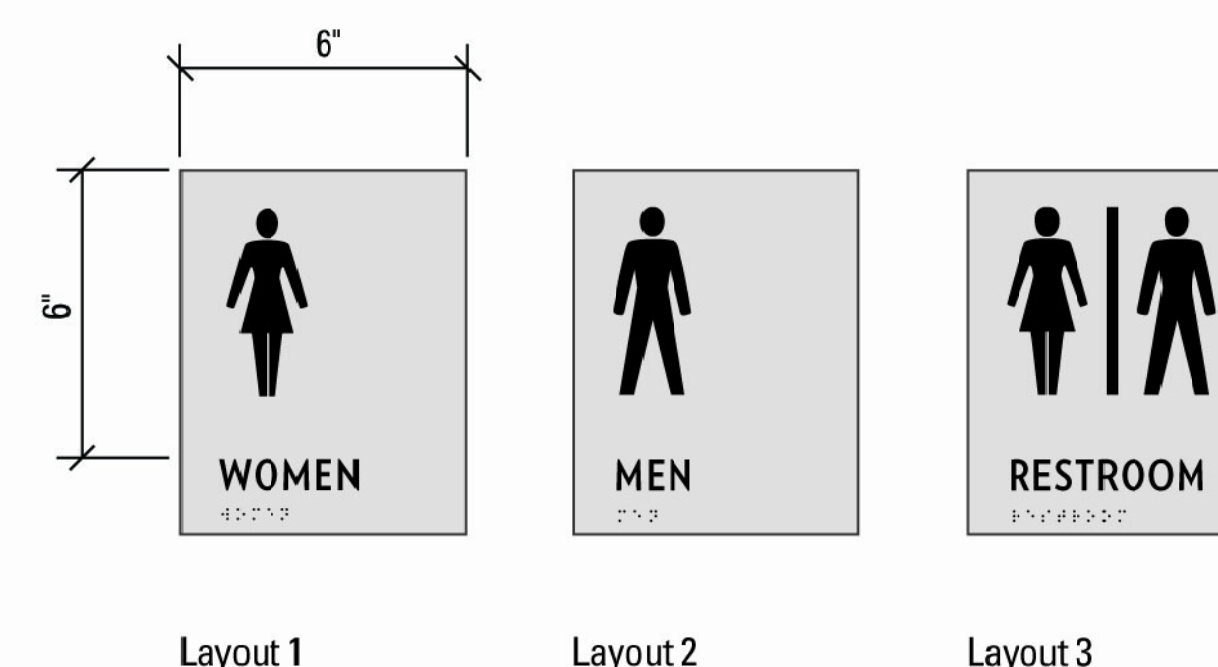
Screenprinted sign panel with standard radiation hazard colors. Mount to door.



**12 Sign Type ID.10 Room Identification**

Scale: 3"=1'

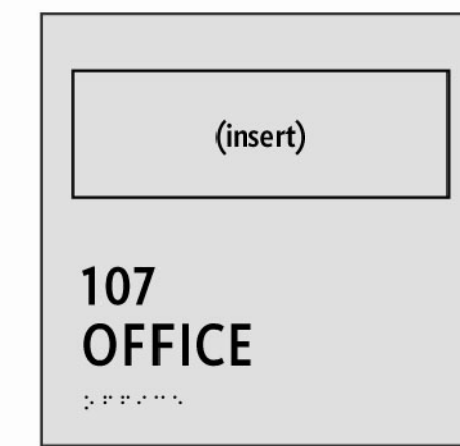
Wall plaque with 5/8" tactile copy, raised 1/32", and California Grade 2 Braille. Mounted on latch side of door, 6" away from frame and 5'-0" on center AFF.



**13 Sign Type ID.11 Restroom Identification**

Scale: 3"=1'

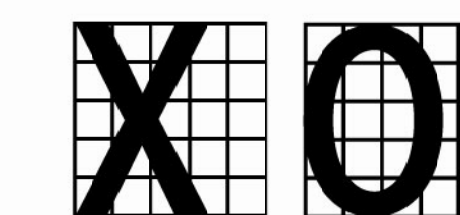
Wall plaque with 5/8" tactile copy, raised 1/32", and California Grade 2 Braille. Mounted on latch side of door, 6" away from frame and 5'-0" on center AFF.



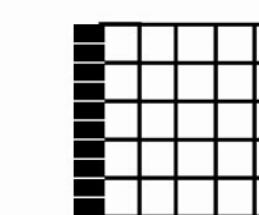
**14 Sign Type ID.12 Office Identification**

Scale: 3"=1'

Wall plaque with 5/8" tactile copy, raised 1/32", and California Grade 2 Braille. Mounted on latch side of door, 6" away from frame and 5'-0" on center AFF.



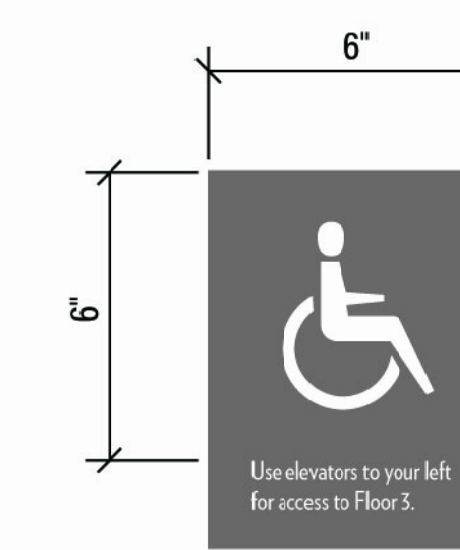
Width to height ratio: must be between 3:5 and 1:1. Complies: "X" and "O" are not wider than 1 inch square, nor narrower than 3:5 rectangle.



Between 1:5 and 1:10. Complies: "I" is not wider than 1:5 rectangle, nor narrower than 1:10 rectangle.

**15 Typeface Proportions**

No Scale



**16 Sign Type CD.9.1 Accessible Path of Travel Directional**

Scale: Half Size

Blue plaque with International Symbol of Accessibility and directional information.

This and all other project documents and all ideas, specifications and designs incorporated herein are instruments of service. All project documents are the registered property of Kwan Henmi Architecture Planning Inc. (Kwan Henmi) and cannot be lawfully used in whole or in part for any project or purpose except as described in the contractual agreement between Kwan Henmi and the Client. Kwan Henmi hereby gives formal notice that any such project documents are, reproduction or modification (without) is strictly prohibited. Kwan Henmi's consent is not required with release to fully identify and defend Kwan Henmi and Kwan Henmi's consent is the necessary legal advice against all known, demands, claims or liabilities arising directly or indirectly from project document release.

Project documents describe design intent of work and are not a representation of the final or installed conditions. Kwan Henmi and Kwan Henmi's consent is not required with release to fully identify and defend Kwan Henmi and Kwan Henmi's consent is the necessary legal advice against all known, demands, claims or liabilities arising directly or indirectly from project document release.

© Copyright 2008

Date	Revision	Description

Date	Revision	Description

Job No.	011500
Date	4.29.2010
Scale	